

TRACT 45540 - Portion of Blocks 23, and 24, Breton Sound Area, Plaquemines Parish, Louisiana

The beds and bottoms of all water bodies belonging to the State of Louisiana located in Blocks 23, and 24, Breton Sound Area, together with any present lands formed by accretion to the shoreline or islands formed therein, located in Plaquemines Parish, Louisiana, owned by and not presently under mineral lease as of July 13, 2022, from the State of Louisiana, the geographical area of which is more fully described as follows: Beginning at a point having Coordinates of X = 2,753,350.00 and Y = 351,830.00, said point being the Northeast corner of Block 24, Breton Sound Area; thence South 7,255.00 feet along the East line of said Block 24 to a point having Coordinates of X = 2,753,350.00 and Y = 344,575.00; thence South 89 degrees 59 minutes 02 seconds West 12,620.00 feet to a point having Coordinates of X = 2,740,730.00 and Y = 344,571.46 said point being common to Blocks 23 and 24; thence South 89 degrees 59 minutes 02 seconds West 5,130.64 feet to a point having Coordinates of X = 2,735,599.36 and Y = 344,570.03, said point on the Louisiana Coastline, as decreed by the Supreme Court of the United States, as determined by a Special Master appointed therein, in litigation styled *United States v. State of Louisiana et al No. 9 Original*, in 1975; thence along said Coastline the following courses: Northeasterly to a point having Coordinates of X = 2,738,600.00 and Y = 348,516.07, said point being on the line common to Blocks 23 and 24, Breton Sound Area and Northwesterly to a point having Coordinates of X = 2,741,119.96 and Y = 351,830.00; thence East 12,230.04 feet along the North line of said Block 24, Breton Sound Area, to the point of beginning, containing approximately **2,497.37 acres**, all as more particularly outlined on a plat on file in the Office of Mineral Resources, Department of Natural Resources. All bearings, distances and coordinates are based on Louisiana Coordinate System of 1927, (North or South Zone).

NOTE: The above description of the Tract nominated for lease has been provided and corrected, where required, exclusively by the nomination party. Any mineral lease selected from this Tract and awarded by the Louisiana State Mineral and Energy Board shall be without warranty of any kind, either express, implied, or statutory, including, but not limited to, the implied warranties of merchantability and fitness for a particular purpose. Should the mineral lease awarded by the Louisiana State Mineral and Energy Board be subsequently modified, cancelled or abrogated due to the existence of conflicting leases, operating agreements, private claims or other future obligations or conditions which may affect all or any portion of the leased Tract, it shall not relieve the Lessee of the obligation to pay any bonus due thereon to the Louisiana State Mineral and Energy Board, nor shall the Louisiana State Mineral and Energy Board be obligated to refund any consideration paid by the Lessor prior to such modification, cancellation, or abrogation, including, but not limited to, bonuses, rentals and royalties.

NOTE: The State of Louisiana does hereby reserve, and this lease shall be subject to, the imprescriptible right of surface use in the nature of a servitude in favor of the Department of Natural Resources, including its

Offices and Commissions, for the sole purpose of implementing, constructing, servicing and maintaining approved coastal zone management and/or restoration projects. Utilization of any and all rights derived under this lease by the mineral lessee, its agents, successors or assigns, shall not interfere with nor hinder the reasonable surface use by the Department of Natural Resources, its Offices or Commissions, as herein above reserved.

Applicant: CYPRESS ENERGY CORPORATION

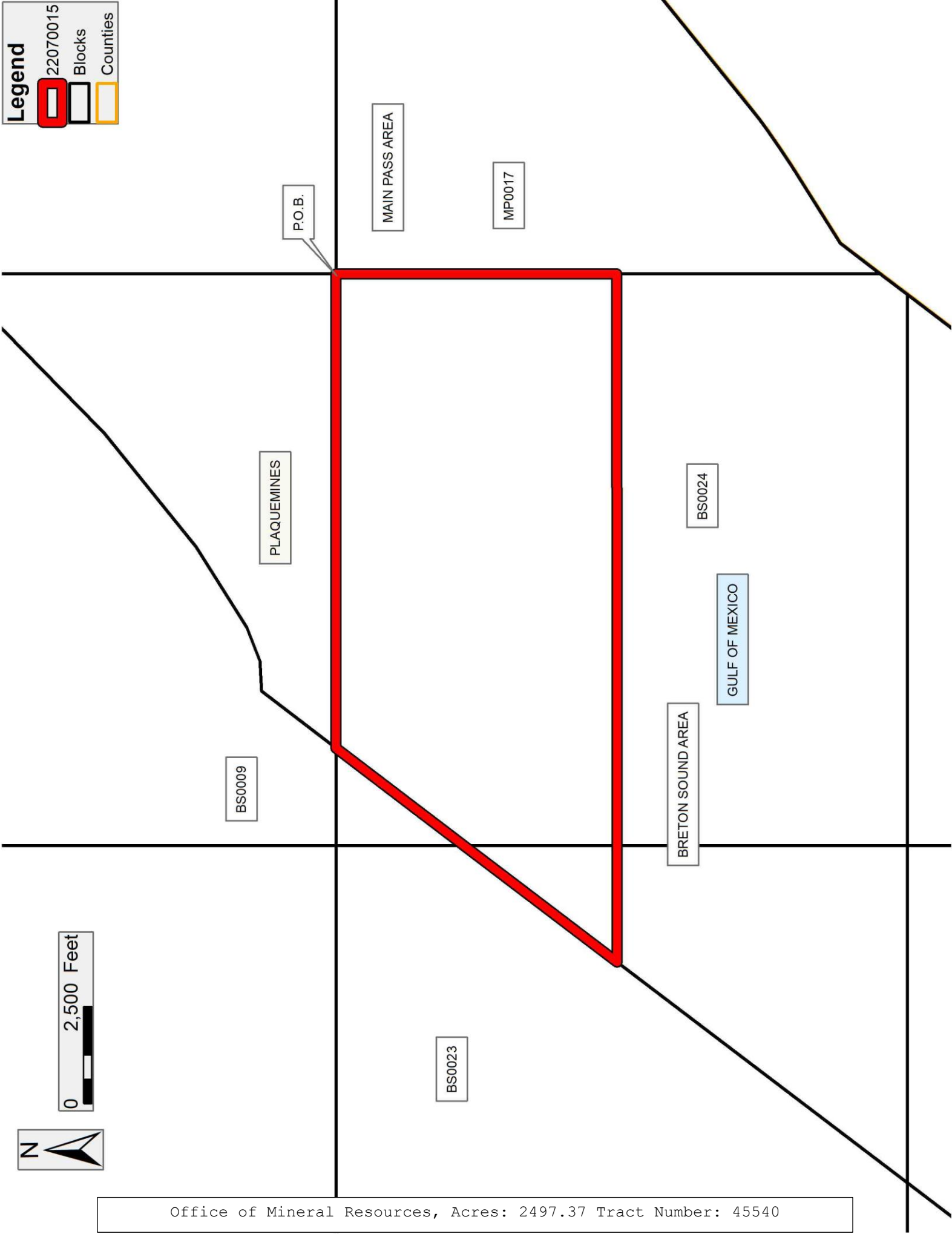
Bidder	Cash Payment	Price/ Acre	Rental	Oil	Gas	Other

Legend

22070015

Blocks

Counties



TRACT 45541 - Portion of Block 17, Main Pass Area, Revised, Plaquemines Parish, Louisiana

The beds and bottoms of all water bodies belonging to the State of Louisiana located in Block 17, Main Pass Area, Revised, together with any present lands formed by accretion to the shoreline or islands formed therein, located in Plaquemines Parish, Louisiana, owned by and not presently under mineral lease as of July 13, 2022, from the State of Louisiana, the geographical area of which is more fully described as follows: Beginning at a point having Coordinates of X = 2,764,850.00 and Y = 351,830.00, said point being on the north line of Block 17, Main Pass Area, Revised; thence South 4,253.72 feet to a point having Coordinates of X = 2,764,850.00 and Y = 347,576.28, said point on the Three Mile Line, as decreed by the Supreme Court of the United States, as determined by a Special Master appointed therein, in litigation styled *United States v. State of Louisiana et al No. 9 Original*, in 1975; thence on and along said Three Mile Line the following courses: Southwesterly to a point having Coordinates of X = 2,761,994 and Y = 344,775; Southwesterly on an arc having a radius of 18,240.60 feet and a center at X = 2,749,221 and Y = 357,797 to a point having Coordinates of X = 2,760,703 and Y = 343,624; Southwesterly to a point having Coordinates of X = 2,757,791 and Y = 341,265; Southwesterly on an arc having a radius of 18,240.60 feet and a center at X = 2,746,309 and Y = 355,438 to a point having Coordinates of X = 2,756,022 and Y = 339,999; Southwesterly to a point having Coordinates of X = 2,754,136 and Y = 338,812; and Southwesterly to a point having Coordinates of X = 2,753,350.00 and Y = 337,778.30, said point being on the West line of said Block 17, Main Pass Area; thence North 14,051.70 feet along said West line of said Block 17, Main Pass Area, to point having Coordinates of X = 2,753,350.00 and Y = 351,830.00; thence East 11,500.00 feet to the point of beginning, containing approximately **2,461.76 acres, LESS AND EXCEPT** that portion thereof, if any, lying seaward of the line three nautical miles from the coast line of Louisiana, as said three mile line has been decreed by the Supreme Court of the United States, as determined by a Special Master appointed therein, in litigation styled **United States v. State of Louisiana et al No. 9 Original**, in 1975, all as more particularly outlined on a plat in the Office of Mineral Resources, Department of Natural Resources. All bearings, distances and coordinates are based on the Louisiana Coordinate System of 1927, (South Zone).

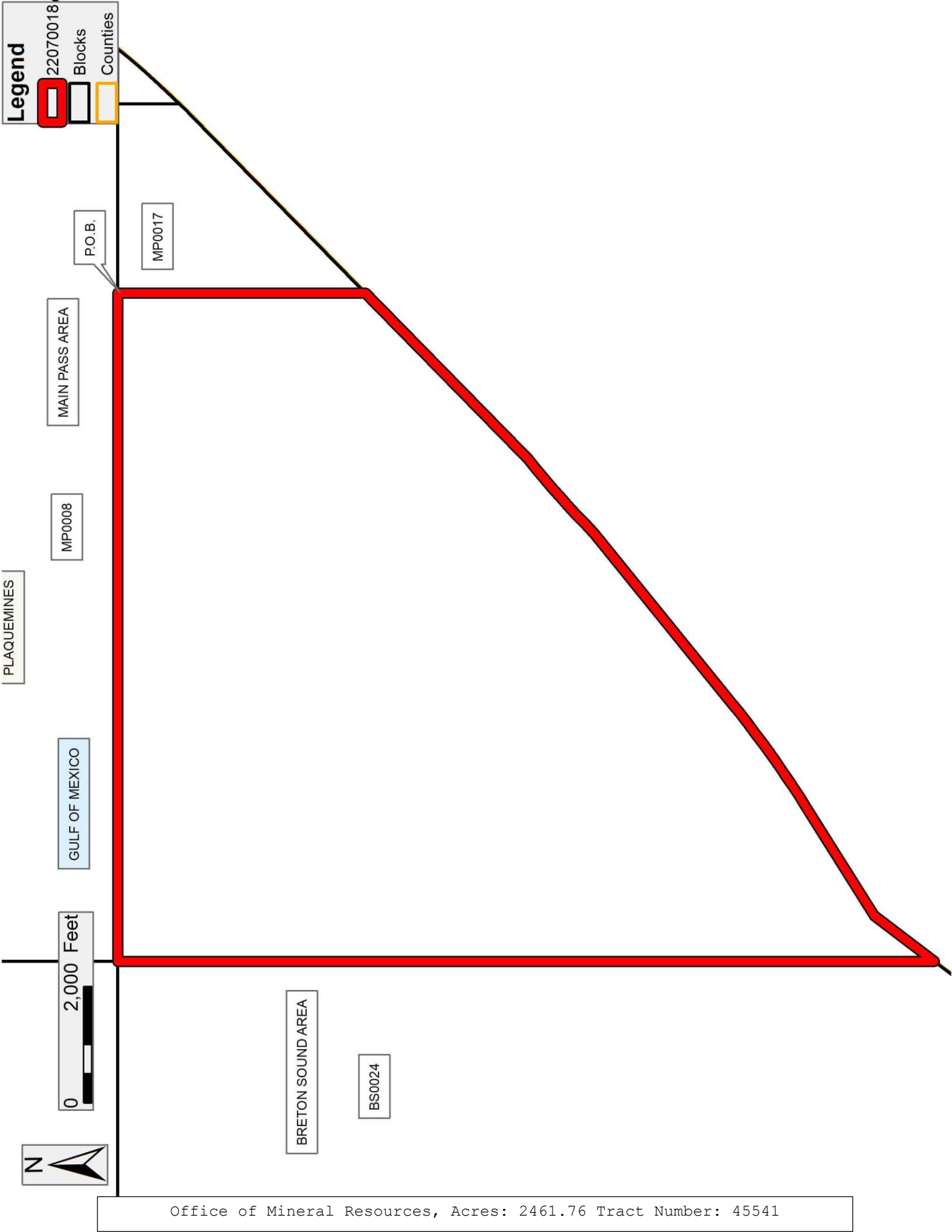
NOTE: The above description of the Tract nominated for lease has been provided and corrected, where required, exclusively by the nomination party. Any mineral lease selected from this Tract and awarded by the Louisiana State Mineral and Energy Board shall be without warranty of any kind, either express, implied, or statutory, including, but not limited to, the implied warranties of merchantability and fitness for a particular purpose. Should the mineral lease awarded by the Louisiana State Mineral and Energy Board be subsequently modified, cancelled or abrogated due to the existence of conflicting leases, operating agreements, private claims or other future obligations or conditions which may affect all or any portion of the leased Tract, it shall not relieve the Lessee of the obligation to pay any bonus due thereon to the Louisiana State Mineral and Energy Board, nor shall the

Louisiana State Mineral and Energy Board be obligated to refund any consideration paid by the Lessor prior to such modification, cancellation, or abrogation, including, but not limited to, bonuses, rentals and royalties.

NOTE: The State of Louisiana does hereby reserve, and this lease shall be subject to, the imprescriptible right of surface use in the nature of a servitude in favor of the Department of Natural Resources, including its Offices and Commissions, for the sole purpose of implementing, constructing, servicing and maintaining approved coastal zone management and/or restoration projects. Utilization of any and all rights derived under this lease by the mineral lessee, its agents, successors or assigns, shall not interfere with nor hinder the reasonable surface use by the Department of Natural Resources, its Offices or Commissions, as herein above reserved.

Applicant: CYPRESS ENERGY CORPORATION

Bidder	Cash Payment	Price/ Acre	Rental	Oil	Gas	Other



TRACT 45542 - Portion of Blocks 23, 24, 25, and 26, Breton Sound Area, Plaquemines Parish, Louisiana

The beds and bottoms of all water bodies belonging to the State of Louisiana located in Blocks 23, 24, 25, and 26, Breton Sound Area, together with any present lands formed by accretion to the shoreline or islands formed therein, located in Plaquemines Parish, Louisiana, owned by and not presently under mineral lease as of July 13, 2022, from the State of Louisiana, the geographical area of which is more fully described as follows: Beginning at a point having Coordinates of X = 2,740,730.00 and Y = 344,571.46, said point being in Block 24, Breton Sound Area; thence South 11,468.46 feet a point having Coordinates of X = 2,740,730.00 and Y = 333,103.00, said point in Block 25, Breton Sound Area; thence West 13,878.00 feet to a point having Coordinates of X = 2,726,852 and Y = 333,103, said point on the Louisiana Coastline, as decreed by the Supreme Court of the United States, as determined by a Special Master appointed therein, in litigation styled *United States v. State of Louisiana et al No. 9 Original*, in 1975, said point in Block 26, Breton Sound Area; thence along said Coastline the following courses: Northeasterly to a point having Coordinates of X = 2,727,653 and Y = 334,120, Northeasterly to a point having Coordinates of X = 2,729,903.83 and Y = 337,080.00, said point being on the line common to Blocks 23 and 26, Breton Sound Area and Northeasterly to a point having Coordinates of X = 2,735,599.36 and Y = 334,570.03, said point in Block 23, Breton Sound Area; thence North 89 degrees 59 minutes 02 seconds East 5,130.64 feet to the point of beginning, containing approximately **2,498.75 acres**, all as more particularly outlined on a plat on file in the Office of Mineral Resources, Department of Natural Resources. All bearings, distances and coordinates are based on Louisiana Coordinate System of 1927, (North or South Zone).

NOTE: The above description of the Tract nominated for lease has been provided and corrected, where required, exclusively by the nomination party. Any mineral lease selected from this Tract and awarded by the Louisiana State Mineral and Energy Board shall be without warranty of any kind, either express, implied, or statutory, including, but not limited to, the implied warranties of merchantability and fitness for a particular purpose. Should the mineral lease awarded by the Louisiana State Mineral and Energy Board be subsequently modified, cancelled or abrogated due to the existence of conflicting leases, operating agreements, private claims or other future obligations or conditions which may affect all or any portion of the leased Tract, it shall not relieve the Lessee of the obligation to pay any bonus due thereon to the Louisiana State Mineral and Energy Board, nor shall the Louisiana State Mineral and Energy Board be obligated to refund any consideration paid by the Lessor prior to such modification, cancellation, or abrogation, including, but not limited to, bonuses, rentals and royalties.

NOTE: The State of Louisiana does hereby reserve, and this lease shall be subject to, the imprescriptible right of surface use in the nature of a servitude in favor of the Department of Natural Resources, including its Offices and Commissions, for the sole purpose of implementing, constructing,

servicing and maintaining approved coastal zone management and/or restoration projects. Utilization of any and all rights derived under this lease by the mineral lessee, its agents, successors or assigns, shall not interfere with nor hinder the reasonable surface use by the Department of Natural Resources, its Offices or Commissions, as herein above reserved.

Applicant: CYPRESS ENERGY CORPORATION

Bidder	Cash Payment	Price/ Acre	Rental	Oil	Gas	Other

TRACT 45543 - Portion of Blocks 24, and 25, Breton Sound Area, Plaquemines Parish, Louisiana

The beds and bottoms of all water bodies belonging to the State of Louisiana located in Blocks 24, and 25, Breton Sound Area, together with any present lands formed by accretion to the shoreline or islands formed therein, located in Plaquemines Parish, Louisiana, owned by and not presently under mineral lease as of July 13, 2022, from the State of Louisiana, the geographical area of which is more fully described as follows: Beginning at a point having Coordinates of X = 2,753,350.00 and Y = 344,575.00, said point on the East line of Block 24, Breton Sound Area; thence South 6,796.70 feet a point having Coordinates of X = 2,753,350.00 and Y = 337,778.30, said point on the Three Mile Line, as decreed by the Supreme Court of the United States, as determined by a Special Master appointed therein, in litigation styled *United States v. State of Louisiana et al No. 9 Original*, in 1975; thence along said Three Mile Line Southwesterly to a point having Coordinates of X = 2,751,906.58 and Y = 335,880.01, said point in Block 25, Breton Sound Area; thence West 11,176.58 feet to a point having Coordinates of X = 2,740,730.00 and Y = 335,880.01; thence North 8,691.47 feet to a point having Coordinates of X = 2,740,730.00 and Y = 344,571.46, said point in Block 24, Breton Sound Area; thence North 89 degrees 59 minutes 02 seconds East 12,620.00 feet to the point of beginning, containing approximately **2,487.11 acres, LESS AND EXCEPT** that portion thereof, if any, lying seaward of the line three nautical miles from the coast line of Louisiana, as said three mile line has been decreed by the Supreme Court of the United States, as determined by a Special Master appointed therein, in litigation styled **United States v. State of Louisiana et al No. 9 Original**, in 1975, all as more particularly outlined on a plat in the Office of Mineral Resources, Department of Natural Resources. All bearings, distances and coordinates are based on the Louisiana Coordinate System of 1927, (South Zone).

NOTE: The above description of the Tract nominated for lease has been provided and corrected, where required, exclusively by the nomination party. Any mineral lease selected from this Tract and awarded by the Louisiana State Mineral and Energy Board shall be without warranty of any kind, either express, implied, or statutory, including, but not limited to, the implied warranties of merchantability and fitness for a particular purpose. Should the mineral lease awarded by the Louisiana State Mineral and Energy Board be subsequently modified, cancelled or abrogated due to the existence of conflicting leases, operating agreements, private claims or other future obligations or conditions which may affect all or any portion of the leased Tract, it shall not relieve the Lessee of the obligation to pay any bonus due thereon to the Louisiana State Mineral and Energy Board, nor shall the Louisiana State Mineral and Energy Board be obligated to refund any consideration paid by the Lessor prior to such modification, cancellation, or abrogation, including, but not limited to, bonuses, rentals and royalties.

NOTE: The State of Louisiana does hereby reserve, and this lease shall be subject to, the imprescriptible right of surface use in the nature of a servitude in favor of the Department of Natural Resources, including its

Offices and Commissions, for the sole purpose of implementing, constructing, servicing and maintaining approved coastal zone management and/or restoration projects. Utilization of any and all rights derived under this lease by the mineral lessee, its agents, successors or assigns, shall not interfere with nor hinder the reasonable surface use by the Department of Natural Resources, its Offices or Commissions, as herein above reserved.

Applicant: CYPRESS ENERGY CORPORATION

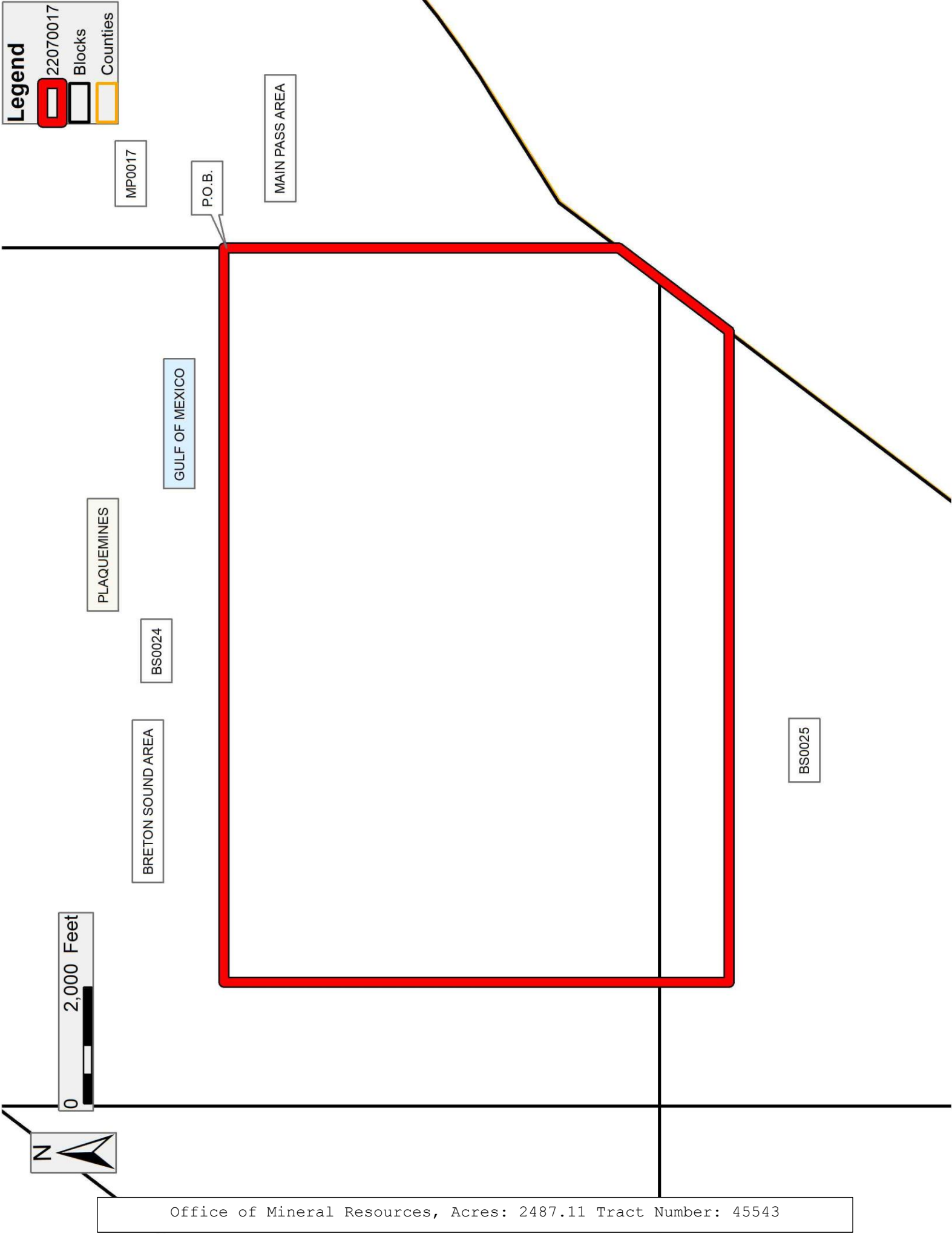
Bidder	Cash Payment	Price/ Acre	Rental	Oil	Gas	Other

Legend

 22070017

 Blocks

 Counties



Office of Mineral Resources, Acres: 2487.11 Tract Number: 45543

TRACT 45544 - Portion of Blocks 25, and 26, Breton Sound Area, Plaquemines Parish, Louisiana

The beds and bottoms of all water bodies belonging to the State of Louisiana located in Blocks 25, and 26, Breton Sound Area, together with any present lands formed by accretion to the shoreline or islands formed therein, located in Plaquemines Parish, Louisiana, owned by and not presently under mineral lease as of July 13, 2022, from the State of Louisiana, the geographical area of which is more fully described as follows: Beginning at a point having Coordinates of X = 2,737,600.00 and Y = 333,103.00, said point in Block 26, Breton Sound Area; thence East 3,130.00 feet into Block 25, Breton Sound Area, having Coordinates of X = 2,740,730.00 and Y = 333,103.00; thence North 2,777.01 feet to a point having Coordinates of X = 2,740,730.00 and Y = 335,880.01; thence East 11,176.58 feet to a point having Coordinates of X = 2,751,906.58 and Y = 335,880.01, said point on the Three Mile Line, as decreed by the Supreme Court of the United States, as determined by a Special Master appointed therein, in litigation styled *United States v. State of Louisiana et al No. 9 Original*, in 1975; thence along said Three Mile Line Southwesterly to a point having Coordinates of X = 2,745,527.12 and Y = 327,490.15, said point being the Northeast corner of State Lease No. 19718, as amended; thence along the boundaries of said State Lease No. 19718 the following courses: North 83 degrees 47 minutes 58 seconds West 1,609.54 feet to a point having Coordinates of X = 2,743,927.00 and Y = 327,664.00, South 52 degrees 31 minutes 16 seconds West 1,129.06 feet to a point having Coordinates of X = 2,743,031.00 and Y = 326,977.00, South 42 degrees 09 minutes 19 seconds West 911.88 feet to a point having Coordinates of X = 2,742,419.00 and Y = 326,301.00, South 30 degrees 24 minutes 58 seconds West 1,058.71 feet to a point having Coordinates of X = 2,741,883.00 and Y = 325,388.00, South 14 degrees 39 minutes 00 seconds West 498.20 feet to a point having Coordinates of X = 2,741,757.00 and Y = 324,906.00, South 17 degrees 56 minutes 58 seconds East 373.16 feet to a point having Coordinates of X = 2,741,872.00 and Y = 324,551.00, South 42 degrees 57 minutes 17 seconds East 356.61 feet to a point having Coordinates of X = 2,742,115.00 and Y = 324,290.00, South 37 degrees 29 minutes 30 seconds East 681.84 feet to a point having Coordinates of X = 2,742,530.00 and Y = 323,749.00 and South 60 degrees 24 minutes 29 seconds East 122.45 feet to a point on said Three Mile Line having Coordinates of X = 2,742,636.48 and Y = 323,688.53; thence along the said Three Mile Line the following courses: Southwesterly to a point having Coordinates of X = 2,742,173 and Y = 323,079, Southwesterly to a point having Coordinates of X = 2,741,983 and Y = 322,834 and Southwesterly to a point having Coordinates of X = 2,741,586.04 and Y = 322,330.00, said point being on the south line of said Block 25; thence West 3,986.04 feet along the south lines of Block 25 and Block 26 to a point having Coordinates of X = 2,737,600.00 and Y = 322,330.00; thence North 10,773.00 feet to the point of beginning, containing approximately **2,494.58 acres, LESS AND EXCEPT** that portion thereof, if any, lying seaward of the line three nautical miles from the coast line of Louisiana, as said three mile line has been decreed by the Supreme Court of the United States, as determined by a Special Master appointed therein, in litigation styled **United States v. State of Louisiana et al No. 9 Original**, in 1975, all as more

particularly outlined on a plat in the Office of Mineral Resources, Department of Natural Resources. All bearings, distances and coordinates are based on the Louisiana Coordinate System of 1927, (South Zone).

NOTE: The above description of the Tract nominated for lease has been provided and corrected, where required, exclusively by the nomination party. Any mineral lease selected from this Tract and awarded by the Louisiana State Mineral and Energy Board shall be without warranty of any kind, either express, implied, or statutory, including, but not limited to, the implied warranties of merchantability and fitness for a particular purpose. Should the mineral lease awarded by the Louisiana State Mineral and Energy Board be subsequently modified, cancelled or abrogated due to the existence of conflicting leases, operating agreements, private claims or other future obligations or conditions which may affect all or any portion of the leased Tract, it shall not relieve the Lessee of the obligation to pay any bonus due thereon to the Louisiana State Mineral and Energy Board, nor shall the Louisiana State Mineral and Energy Board be obligated to refund any consideration paid by the Lessor prior to such modification, cancellation, or abrogation, including, but not limited to, bonuses, rentals and royalties.

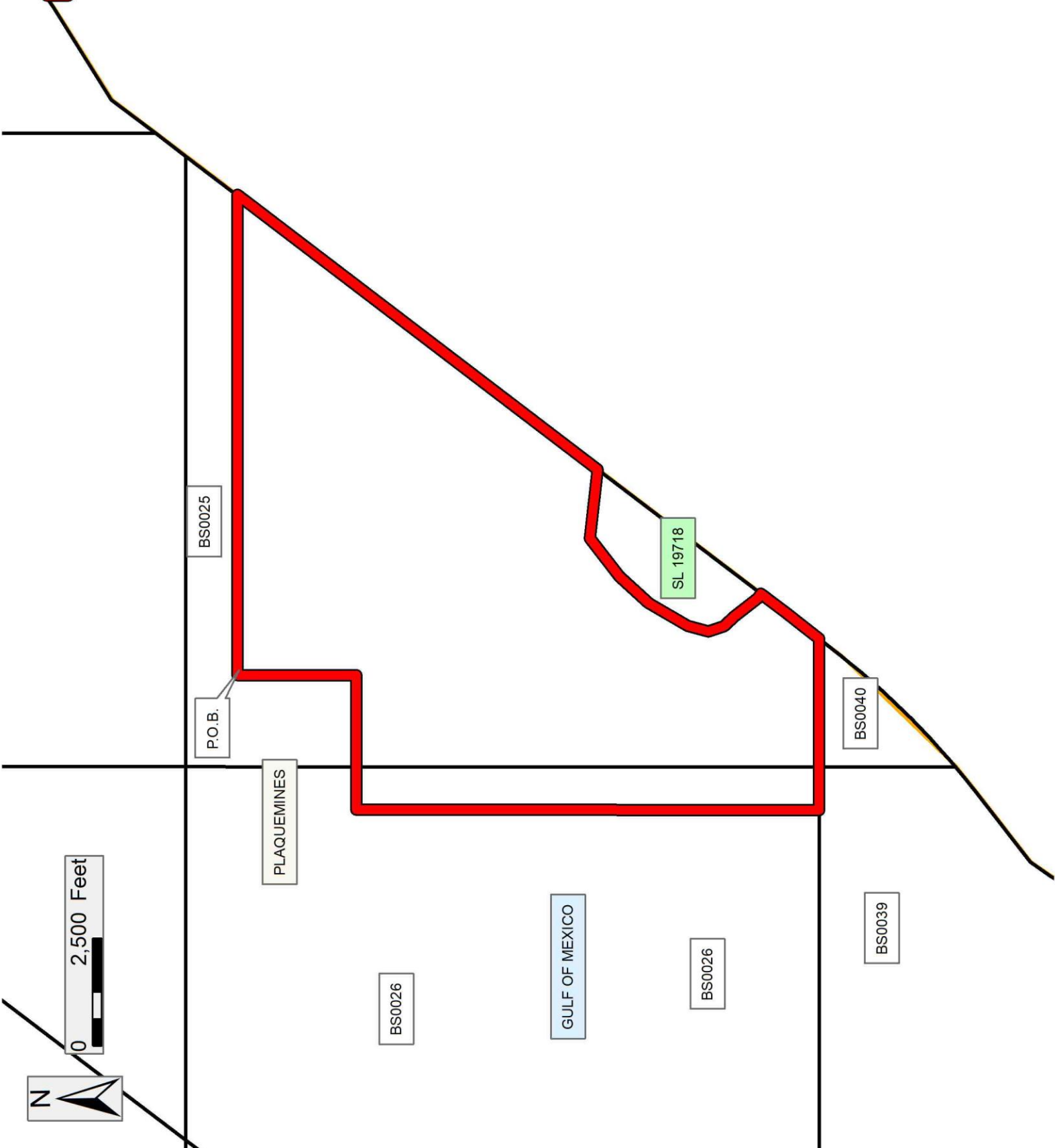
NOTE: The State of Louisiana does hereby reserve, and this lease shall be subject to, the imprescriptible right of surface use in the nature of a servitude in favor of the Department of Natural Resources, including its Offices and Commissions, for the sole purpose of implementing, constructing, servicing and maintaining approved coastal zone management and/or restoration projects. Utilization of any and all rights derived under this lease by the mineral lessee, its agents, successors or assigns, shall not interfere with nor hinder the reasonable surface use by the Department of Natural Resources, its Offices or Commissions, as herein above reserved.

Applicant: CYPRESS ENERGY CORPORATION

Bidder	Cash Payment	Price/ Acre	Rental	Oil	Gas	Other

Legend

- 22070020
- Blocks
- Active_Leases
- Counties



Office of Mineral Resources, Acres: 2494.58 Tract Number: 45544

TRACT 45545 - Portion of Block 26, Breton Sound Area, Plaquemines Parish, Louisiana

The beds and bottoms of all water bodies belonging to the State of Louisiana located in Block 26, Breton Sound Area, together with any present lands formed by accretion to the shoreline or islands formed therein, located in Plaquemines Parish, Louisiana, owned by and not presently under mineral lease as of July 13, 2022, from the State of Louisiana, the geographical area of which is more fully described as follows: Beginning at a point having Coordinates of X = 2,737,600.00 and Y = 333,103.00, said point being on the east line of Block 26, Breton Sound Area; thence South 10,129.00 feet along the east line of said Block 26, Breton Sound Area, to a point having Coordinates of X = 2,737,600.00 and Y = 322,974.00; thence West 10,748.00 feet to a point having Coordinates of X = 2,726,852.00 and Y = 322,974.00; thence North 10,129.00 feet to a point having Coordinates of X = 2,726,852 and Y = 333,103, said point on the Louisiana Coastline, as decreed by the Supreme Court of the United States, as determined by a Special Master appointed therein, in litigation styled *United States v. State of Louisiana et al No. 9 Original*, in 1975; thence East 10,748.00 feet to the point of beginning, containing approximately **2,499.23 acres**, all as more particularly outlined on a plat on file in the Office of Mineral Resources, Department of Natural Resources. All bearings, distances and coordinates are based on Louisiana Coordinate System of 1927, (North or South Zone).

NOTE: The above description of the Tract nominated for lease has been provided and corrected, where required, exclusively by the nomination party. Any mineral lease selected from this Tract and awarded by the Louisiana State Mineral and Energy Board shall be without warranty of any kind, either express, implied, or statutory, including, but not limited to, the implied warranties of merchantability and fitness for a particular purpose. Should the mineral lease awarded by the Louisiana State Mineral and Energy Board be subsequently modified, cancelled or abrogated due to the existence of conflicting leases, operating agreements, private claims or other future obligations or conditions which may affect all or any portion of the leased Tract, it shall not relieve the Lessee of the obligation to pay any bonus due thereon to the Louisiana State Mineral and Energy Board, nor shall the Louisiana State Mineral and Energy Board be obligated to refund any consideration paid by the Lessor prior to such modification, cancellation, or abrogation, including, but not limited to, bonuses, rentals and royalties.

NOTE: The State of Louisiana does hereby reserve, and this lease shall be subject to, the imprescriptible right of surface use in the nature of a servitude in favor of the Department of Natural Resources, including its Offices and Commissions, for the sole purpose of implementing, constructing, servicing and maintaining approved coastal zone management and/or restoration projects. Utilization of any and all rights derived under this lease by the mineral lessee, its agents, successors or assigns, shall not interfere with nor hinder the reasonable surface use by the Department of Natural Resources, its Offices or Commissions, as herein above reserved.

Applicant: CYPRESS ENERGY CORPORATION

Bidder	Cash Payment	Price/ Acre	Rental	Oil	Gas	Other

Legend

22070019

Blocks

Counties

