

#### **TRACT 45617 - Red River Parish, Louisiana**

All of the lands now or formerly constituting the beds and bottoms of all water bodies of every nature and description as to which title is vested in the State of Louisiana, together with all islands arising therein and other lands formed by accretion or by reliction, where allowed by law, excepting tax adjudicated lands, and not presently under mineral lease on February 8, 2023, situated in Red River Parish, Louisiana, and more particularly described as follows: Beginning at a point on the boundary of State Lease No. 22053 having Coordinates of X = 1,740,168.18 and Y = 476,267.70; thence South 88 degrees 57 minutes 20 seconds East 4,492.03 feet to a point having Coordinates of X = 1,744,659.46 and Y = 476,185.83; thence South 00 degrees 37 minutes 22 seconds West 4,362.55 feet to a point having Coordinates X = 1,744,612.05 and Y = 471,823.54; thence South 89 degrees 24 minutes 32 seconds West 4,444.10 feet to a point being the Southeast corner of said State Lease No. 22053 having Coordinates of X = 1,740,168.18 and Y = 471,777.68; thence North 4,490.02 feet to the point of beginning, containing approximately **110 acres**, all as more particularly outlined on a plat on file in the Office of Mineral Resources, Department of Natural Resources. All bearings, distances and coordinates are based on Louisiana Coordinate System of 1927, (North or South Zone), where applicable.

NOTE: The above description of the Tract nominated for lease has been provided and corrected, where required, exclusively by the nomination party. Any mineral lease selected from this Tract and awarded by the Louisiana State Mineral and Energy Board shall be without warranty of any kind, either express, implied, or statutory, including, but not limited to, the implied warranties of merchantability and fitness for a particular purpose. Should the mineral lease awarded by the Louisiana State Mineral and Energy Board be subsequently modified, cancelled or abrogated due to the existence of conflicting leases, operating agreements, private claims or other future obligations or conditions which may affect all or any portion of the leased Tract, it shall not relieve the Lessee of the obligation to pay any bonus due thereon to the Louisiana State Mineral and Energy Board, nor shall the Louisiana State Mineral and Energy Board be obligated to refund any consideration paid by the Lessor prior to such modification, cancellation, or abrogation, including, but not limited to, bonuses, rentals and royalties.

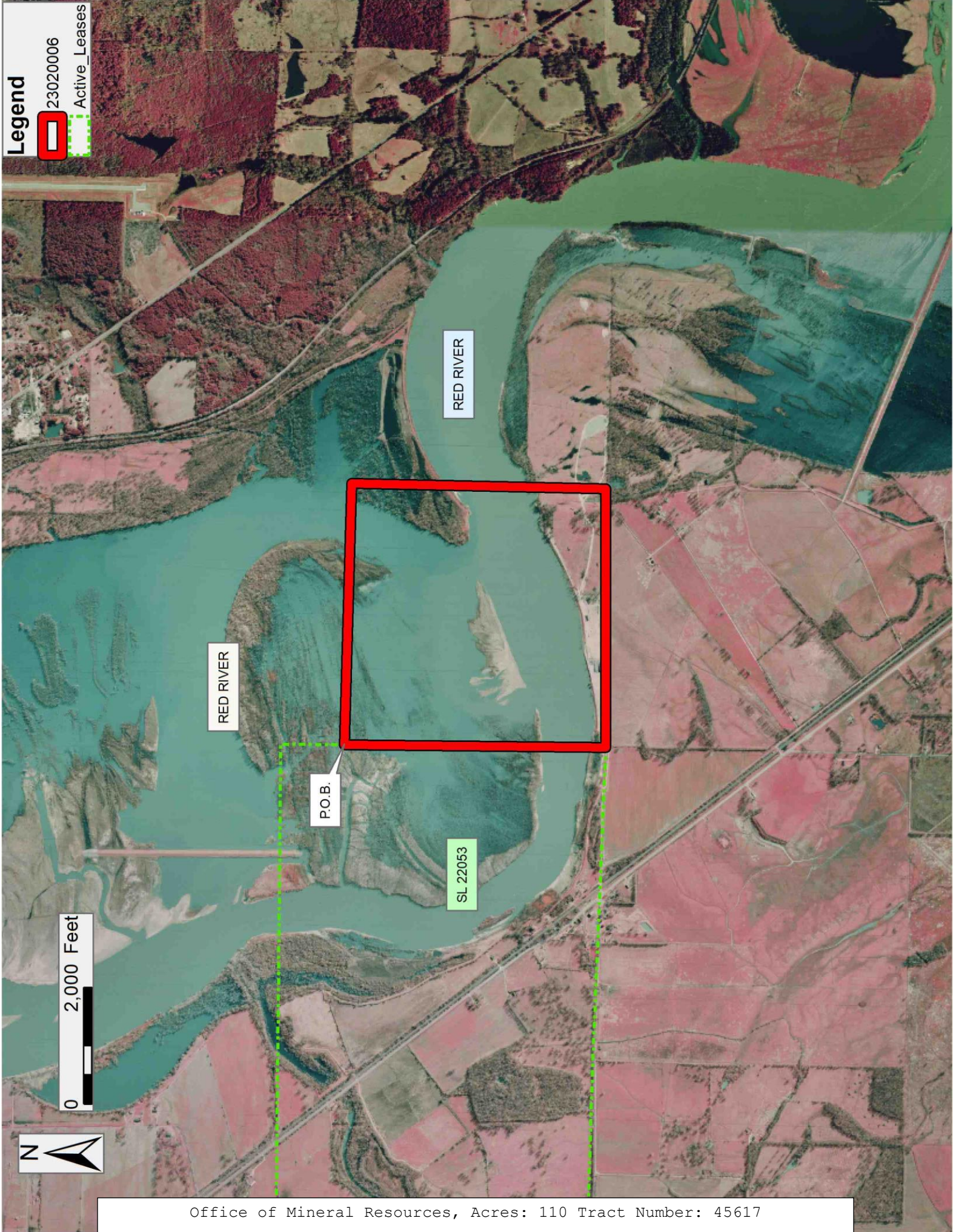


Applicant: SLS SERVICES

Bidder	Cash Payment	Price/ Acre	Rental	Oil	Gas	Other



**Legend**  
23020006  
Active\_Leases





**TRACT 45618 - Acadia and Lafayette Parishes, Louisiana**

All of the lands now or formerly constituting the beds and bottoms of all water bodies of every nature and description as to which title is vested in the State of Louisiana, together with all islands arising therein and other lands formed by accretion or by reliction, where allowed by law, excepting tax adjudicated lands, and not presently under mineral lease on February 8, 2023, situated in Acadia and Lafayette Parishes, Louisiana, and more particularly described as follows: Beginning at a point having Coordinates of X = 1,706,400.00 and Y = 550,200.00; thence North 18,480.00 feet to a point having Coordinates of X = 1,706,400.00 and Y = 568,680.00; thence East 18,480.00 feet to a point having Coordinate of X = 1,724,880.00 and Y = 568,680.00; thence South 18,480.00 feet to a point having Coordinates of X = 1,724,880.00 and Y = 550,200.00; thence West 18,480.00 feet to the point of beginning, **LESS AND EXCEPT** any right, title, and interest in lands owned by and not under lease from the State of Louisiana, on behalf of the Acadia Parish and Lafayette Parish School Boards, situated in Section 16, Township 10 South, Range 2 East, Acadia Parish and Lafayette Parish, Louisiana, contained within the above described tract, containing approximately **30 acres**, all as more particularly outlined on a plat on file in the Office of Mineral Resources, Department of Natural Resources. All bearings, distances and coordinates are based on Louisiana Coordinate System of 1927, (North or South Zone), where applicable.

NOTE: The above description of the Tract nominated for lease has been provided and corrected, where required, exclusively by the nomination party. Any mineral lease selected from this Tract and awarded by the Louisiana State Mineral and Energy Board shall be without warranty of any kind, either express, implied, or statutory, including, but not limited to, the implied warranties of merchantability and fitness for a particular purpose. Should the mineral lease awarded by the Louisiana State Mineral and Energy Board be subsequently modified, cancelled or abrogated due to the existence of conflicting leases, operating agreements, private claims or other future obligations or conditions which may affect all or any portion of the leased Tract, it shall not relieve the Lessee of the obligation to pay any bonus due thereon to the Louisiana State Mineral and Energy Board, nor shall the Louisiana State Mineral and Energy Board be obligated to refund any consideration paid by the Lessor prior to such modification, cancellation, or abrogation, including, but not limited to, bonuses, rentals and royalties.



Applicant: CARTER OIL & GAS

Bidder	Cash Payment	Price/ Acre	Rental	Oil	Gas	Other



Legend

23020004

Counties



LAFAYETTE

ACADIA

BAYOU QUEUE DE TORTUE

P.O.B.

0 4,000 Feet





**TRACT 45619 - Acadia Lafayette and Vermilion Parishes, Louisiana**

All of the lands now or formerly constituting the beds and bottoms of all water bodies of every nature and description as to which title is vested in the State of Louisiana, together with all islands arising therein and other lands formed by accretion or by reliction, where allowed by law, excepting tax adjudicated lands, and not presently under mineral lease on February 8, 2023, situated in Acadia Lafayette and Vermilion Parishes, Louisiana, and more particularly described as follows: Beginning at a point having Coordinates of X = 1,696,600.00 and Y = 531,720.00; thence North 18,480.00 feet to a point having Coordinates of X = 1,696,600.00 and Y = 550,200.00; thence East 18,480.00 feet to a point having Coordinates of X = 1,715,080.00 and Y = 550,200.00; thence South 18,480.00 feet to a point having Coordinates of X = 1,715,080.00 and Y = 531,720.00; thence West 18,480.00 feet to the point of beginning, **LESS AND EXCEPT** any right, title, and interest in lands owned by and not under lease from the State of Louisiana, on behalf of the Acadia Parish, Lafayette Parish, and Vermilion Parish School Boards, situated in Section 16, Township 10 South, Range 2 East, Acadia Parish, Lafayette Parish, and Vermilion Parish, Louisiana, contained within the above described tract, containing approximately **50 acres**, all as more particularly outlined on a plat on file in the Office of Mineral Resources, Department of Natural Resources. All bearings, distances and coordinates are based on Louisiana Coordinate System of 1927, (North or South Zone), where applicable.

NOTE: The above description of the Tract nominated for lease has been provided and corrected, where required, exclusively by the nomination party. Any mineral lease selected from this Tract and awarded by the Louisiana State Mineral and Energy Board shall be without warranty of any kind, either express, implied, or statutory, including, but not limited to, the implied warranties of merchantability and fitness for a particular purpose. Should the mineral lease awarded by the Louisiana State Mineral and Energy Board be subsequently modified, cancelled or abrogated due to the existence of conflicting leases, operating agreements, private claims or other future obligations or conditions which may affect all or any portion of the leased Tract, it shall not relieve the Lessee of the obligation to pay any bonus due thereon to the Louisiana State Mineral and Energy Board, nor shall the Louisiana State Mineral and Energy Board be obligated to refund any consideration paid by the Lessor prior to such modification, cancellation, or abrogation, including, but not limited to, bonuses, rentals and royalties.



Applicant: CARTER OIL & GAS

Bidder	Cash Payment	Price/ Acre	Rental	Oil	Gas	Other



**Legend**

23020005

Counties

LAFAYETTE

BAYOU QUEUE DE TORTUE

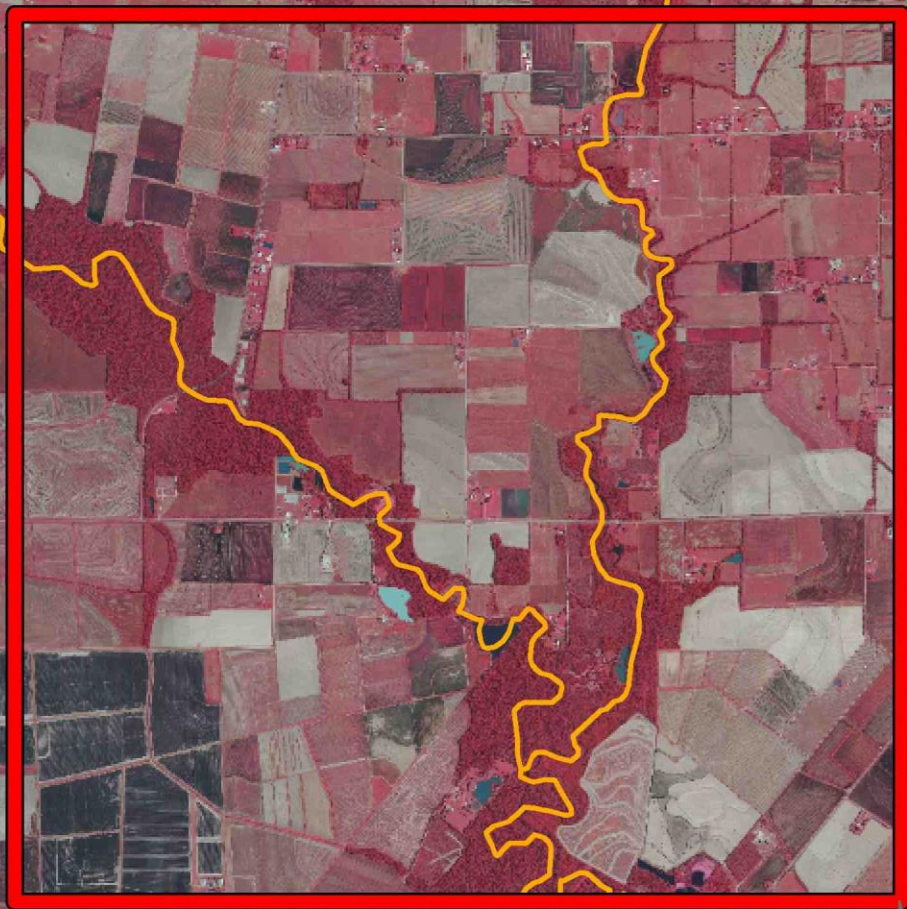
INDIAN BAYOU

ACADIA

VERMILION

P.O.B.

0 4,000 Feet





**TRACT 45620 - Jefferson and Plaquemines Parishes, Louisiana**

All of the lands now or formerly constituting the beds and bottoms of all water bodies of every nature and description as to which title is vested in the State of Louisiana, together with all islands arising therein and other lands formed by accretion or by reliction, where allowed by law, excepting tax adjudicated lands, and not presently under mineral lease on February 8, 2023, situated in Jefferson and Plaquemines Parishes, Louisiana, and more particularly described as follows: Beginning at a point having Coordinates of X = 2,432,400.00 and Y = 301,300.30; thence West 5,323.30 feet to the Southeast corner of Tract 2 of Operating Agreement No. A0321 having Coordinates of X = 2,427,076.70 and Y = 301,300.30; thence North 01 degrees 02 minutes 35 seconds West 1,428.94 feet along the East line of said Tract 2 of Operating Agreement No. A0321 to its Northeast corner having Coordinates of X = 2,427,050.69 and Y = 302,729.00; thence North 01 degrees 00 minutes 09 seconds West 1,695.72 feet to the Southwest corner of State Lease No. 19949, as amended, having Coordinate of X = 2,427,021.02 and Y = 304,424.46; thence along the boundary of said State Lease No. 19949, as amended, the following courses: North 88 degrees 59 minutes 23 seconds East 1,269.18 feet to its Southeast corner having Coordinates of X = 2,428,290.00 and Y = 304,446.84, North 2,155.09 feet to its Northeast corner having Coordinates of X = 2,428,290.00 and Y = 306,601.93, and South 88 degrees 58 minutes 43 seconds West 1,303.67 feet to its Northwest corner, said corner being a point on the East line of State Lease No. 20512, as amended, having Coordinates of X = 2,426,986.54 and Y = 306,578.69; thence along the East line of said State Lease No. 20512, as amended, the following courses: North 00 degrees 54 minutes 59 seconds West 321.35 feet to a point having Coordinates of X = 2,426,981.40 and Y = 306,900.00 and North 01 degrees 33 minutes 49 seconds West 626.73 feet to its Northeast corner having Coordinates of X = 2,426,964.30 and Y = 307,526.50; thence North 1,573.50 feet to a point having Coordinates of X = 2,426,964.30 and Y = 309,100.00; thence East 5,435.70 feet to a point having Coordinates of X = 2,432,400.00 and Y = 309,100.00; thence South 7,799.70 feet to the point of beginning, (This tract includes only waterbottoms claimed and owned by the state and specifically excludes any land which the state may claim or own and to which the mineral rights are vested in the state), containing approximately **485 acres**, all as more particularly outlined on a plat on file in the Office of Mineral Resources, Department of Natural Resources. All bearings, distances and coordinates are based on Louisiana Coordinate System of 1927, (North or South Zone), where applicable.

NOTE: The above description of the Tract nominated for lease has been provided and corrected, where required, exclusively by the nomination party. Any mineral lease selected from this Tract and awarded by the Louisiana State Mineral and Energy Board shall be without warranty of any kind, either express, implied, or statutory, including, but not limited to, the implied warranties of merchantability and fitness for a particular purpose. Should the mineral lease awarded by the Louisiana State Mineral and Energy Board be subsequently modified, cancelled or abrogated due to the existence of conflicting leases, operating agreements, private claims or other future



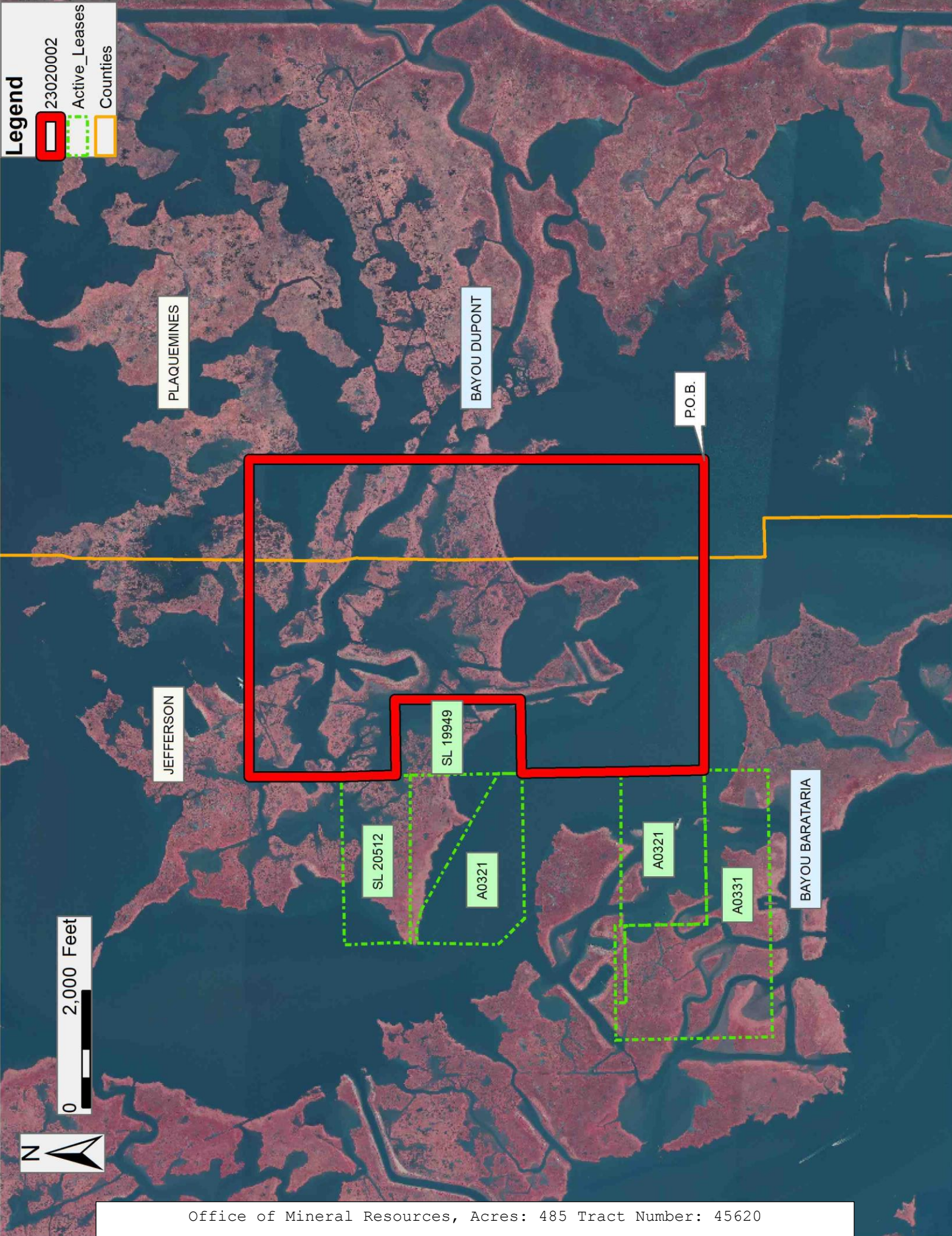
obligations or conditions which may affect all or any portion of the leased Tract, it shall not relieve the Lessee of the obligation to pay any bonus due thereon to the Louisiana State Mineral and Energy Board, nor shall the Louisiana State Mineral and Energy Board be obligated to refund any consideration paid by the Lessor prior to such modification, cancellation, or abrogation, including, but not limited to, bonuses, rentals and royalties.

NOTE: The State of Louisiana does hereby reserve, and this lease shall be subject to, the imprescriptible right of surface use in the nature of a servitude in favor of the Department of Natural Resources, including its Offices and Commissions, for the sole purpose of implementing, constructing, servicing and maintaining approved coastal zone management and/or restoration projects. Utilization of any and all rights derived under this lease by the mineral lessee, its agents, successors or assigns, shall not interfere with nor hinder the reasonable surface use by the Department of Natural Resources, its Offices or Commissions, as herein above reserved.

Applicant: PT ENERGY PRODUCERS

Bidder	Cash Payment	Price/ Acre	Rental	Oil	Gas	Other





Legend

23020002

Active\_Leases

Counties

PLAQUEMINES

BAYOU DUPONT

P.O.B.

JEFFERSON

SL 19949

SL 20512

A0321

A0321

A0331

BAYOU BARATARIA

0 2,000 Feet



Office of Mineral Resources, Acres: 485 Tract Number: 45620



**TRACT 45621 - Jefferson and Plaquemines Parishes, Louisiana**

All of the lands now or formerly constituting the beds and bottoms of all water bodies of every nature and description as to which title is vested in the State of Louisiana, together with all islands arising therein and other lands formed by accretion or by reliction, where allowed by law, excepting tax adjudicated lands, and not presently under mineral lease on February 8, 2023, situated in Jefferson and Plaquemines Parishes, Louisiana, and more particularly described as follows: Beginning at a point having Coordinates of X = 2,432,400.00 and Y = 301,300.30; thence South 6,800.30 feet to a point having Coordinates of X = 2,432,400.00 and Y = 294,500.00; thence West 4,783.45 feet to a point on the East line of State Lease No. 21651 having Coordinates of X = 2,427,616.55 and Y = 294,500.00; thence North 963.97 feet along the East line of said State Lease No. 21651 to the Southwest corner of State Lease No. 22048 having Coordinates of X = 2,427,616.55 and Y = 295,463.97; thence along the boundary of said State Lease No. 22048 the following courses: North 89 degrees 48 minutes 28 seconds East 903.46 feet to its Southeast corner having Coordinates of X = 2,428,520.00 and Y = 295,467.00, and North 00 degrees 20 minutes 51 seconds East 1,927.93 feet to a point on the boundary of State Lease No. 22049 having Coordinates X = 2,428,531.69 and Y = 297,394.90; thence along the boundary of said State Lease No. 22049 the following courses: South 57 degrees 43 minutes 03 seconds East 1,263.64 feet to a point having Coordinates of X = 2,429,600.00 and Y = 296,720.00; North 53 degrees 21 minutes 40 seconds East 2,528.62 feet to a point having Coordinates of X = 2,431,629.00 and Y = 298,229.00; North 59 degrees 47 minutes 03 seconds West 2,036.72 feet to a point having Coordinates of X = 2,429,869.00 and Y = 299,254.00; and South 50 degrees 39 minutes 37 seconds West 146.43 feet to a point on the Eastern boundary of State Lease No. 21345 having Coordinates of X = 2,429,755.75 and Y = 299,161.18; thence along the boundary of said State Lease No. 21345 the following courses: North 01 degrees 02 minutes 04 seconds West 1,089.59 feet to its Northeast corner having Coordinates of X = 2,429,736.08 and Y = 300,250.59, and South 89 degrees 06 minutes 56 seconds West 2,659.70 feet to the Southeast corner of Operating Agreement No. A0331 having Coordinates of X = 2,427,076.70 and Y = 300,209.54; thence North 1,090.76 feet along the East line of said Operating Agreement No. A0331 to its most Easterly Northeast corner having Coordinates of X = 2,427,076.70 and Y = 301,300.30; thence East 5,323.30 feet to the point of beginning, (This tract includes only waterbottoms claimed and owned by the state and specifically excludes any land which the state may claim or own and to which the mineral rights are vested in the state), containing approximately **416 acres**, all as more particularly outlined on a plat on file in the Office of Mineral Resources, Department of Natural Resources. All bearings, distances and coordinates are based on Louisiana Coordinate System of 1927, (North or South Zone), where applicable.

NOTE: The above description of the Tract nominated for lease has been provided and corrected, where required, exclusively by the nomination party. Any mineral lease selected from this Tract and awarded by the Louisiana State Mineral and Energy Board shall be without warranty of any kind, either



express, implied, or statutory, including, but not limited to, the implied warranties of merchantability and fitness for a particular purpose. Should the mineral lease awarded by the Louisiana State Mineral and Energy Board be subsequently modified, cancelled or abrogated due to the existence of conflicting leases, operating agreements, private claims or other future obligations or conditions which may affect all or any portion of the leased Tract, it shall not relieve the Lessee of the obligation to pay any bonus due thereon to the Louisiana State Mineral and Energy Board, nor shall the Louisiana State Mineral and Energy Board be obligated to refund any consideration paid by the Lessor prior to such modification, cancellation, or abrogation, including, but not limited to, bonuses, rentals and royalties.

NOTE: The State of Louisiana does hereby reserve, and this lease shall be subject to, the imprescriptible right of surface use in the nature of a servitude in favor of the Department of Natural Resources, including its Offices and Commissions, for the sole purpose of implementing, constructing, servicing and maintaining approved coastal zone management and/or restoration projects. Utilization of any and all rights derived under this lease by the mineral lessee, its agents, successors or assigns, shall not interfere with nor hinder the reasonable surface use by the Department of Natural Resources, its Offices or Commissions, as herein above reserved.

Applicant: PT ENERGY PRODUCERS

Bidder	Cash Payment	Price/ Acre	Rental	Oil	Gas	Other

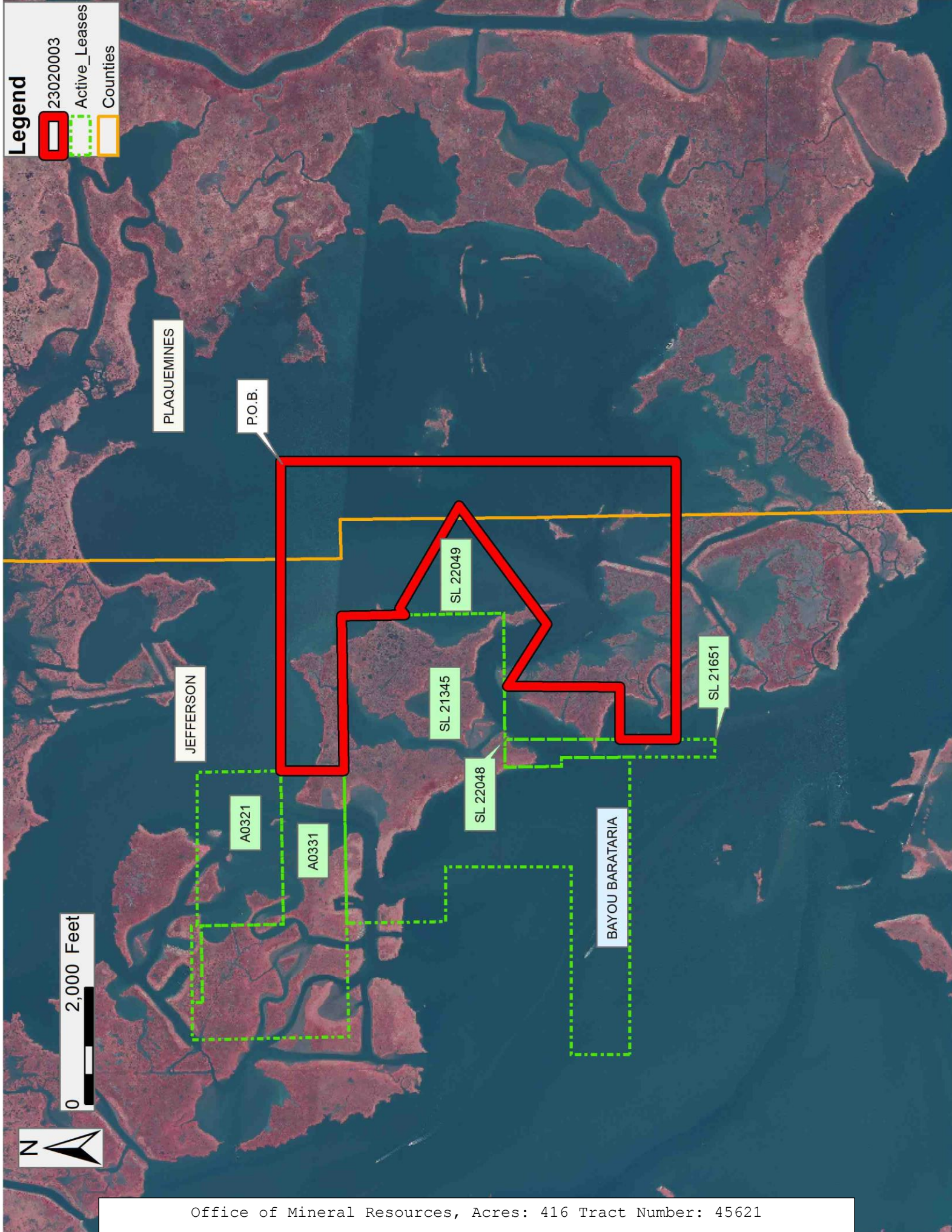


**Legend**

23020003

Active\_Leases

Counties





**TRACT 45622 - Portion of Blocks 116, and 117, South Timbalier Area, Revised, Terrebonne Parish, Louisiana**

All of the lands now or formerly constituting the beds and bottoms of all water bodies of every nature and description as to which title is vested in the State of Louisiana, together with all islands arising therein and other lands formed by accretion or by reliction, where allowed by law, excepting tax adjudicated lands, and not presently under mineral lease on February 8, 2023, situated in Terrebonne Parish, Louisiana, and more particularly described as follows: Beginning at a point on the North line of Block 117, South Timbalier Area, Revised, having Coordinates of X = 2,243,834.97 and Y = 179,372.07; thence East 18,243.68 feet to a point having Coordinates of X = 2,262,078.65 and Y = 179,372.07; thence South 3,053.34 feet to the Northeast corner of State Lease No. 1247, as amended, having Coordinates of X = 2,262,078.65 and Y = 176,318.73; thence along the boundary of said State Lease No. 1247 the following courses: West 470.61 feet to a point having Coordinates of X = 2,261,608.04 and Y = 176,318.73, South 1,223.25 feet to a point having Coordinates of X = 2,261,608.04 and Y = 175,095.48, West 3,400.00 feet to a point having Coordinates of X = 2,258,208.04 and Y = 175,095.48, South 200.00 feet to a point having Coordinates of X = 2,258,208.04 and Y = 174,895.48, West 4,050.00 feet to a point having Coordinates of X = 2,254,158.04 and Y = 174,895.48, South 2,650.00 feet to a point having Coordinates of X = 2,254,158.04 and Y = 172,245.48, and West 350.00 feet to a point having Coordinates of X = 2,253,808.04 and Y = 172,245.48; thence West 9,973.07 feet to a point having Coordinates of X = 2,243,834.97 and Y = 172,245.48; thence North 7,126.59 feet to the point of beginning, containing approximately **2,471.90 acres**, all as more particularly outlined on a plat on file in the Office of Mineral Resources, Department of Natural Resources. All bearings, distances and coordinates are based on Louisiana Coordinate System of 1927, (North or South Zone), where applicable.

NOTE: The above description of the Tract nominated for lease has been provided and corrected, where required, exclusively by the nomination party. Any mineral lease selected from this Tract and awarded by the Louisiana State Mineral and Energy Board shall be without warranty of any kind, either express, implied, or statutory, including, but not limited to, the implied warranties of merchantability and fitness for a particular purpose. Should the mineral lease awarded by the Louisiana State Mineral and Energy Board be subsequently modified, cancelled or abrogated due to the existence of conflicting leases, operating agreements, private claims or other future obligations or conditions which may affect all or any portion of the leased Tract, it shall not relieve the Lessee of the obligation to pay any bonus due thereon to the Louisiana State Mineral and Energy Board, nor shall the Louisiana State Mineral and Energy Board be obligated to refund any consideration paid by the Lessor prior to such modification, cancellation, or abrogation, including, but not limited to, bonuses, rentals and royalties.

NOTE: The State of Louisiana does hereby reserve, and this lease shall be subject to, the imprescriptible right of surface use in the nature of a servitude in favor of the Department of Natural Resources, including its



Offices and Commissions, for the sole purpose of implementing, constructing, servicing and maintaining approved coastal zone management and/or restoration projects. Utilization of any and all rights derived under this lease by the mineral lessee, its agents, successors or assigns, shall not interfere with nor hinder the reasonable surface use by the Department of Natural Resources, its Offices or Commissions, as herein above reserved.

Applicant: LOUISIANA BAYOU OIL & GAS CO.

Bidder	Cash Payment	Price/ Acre	Rental	Oil	Gas	Other

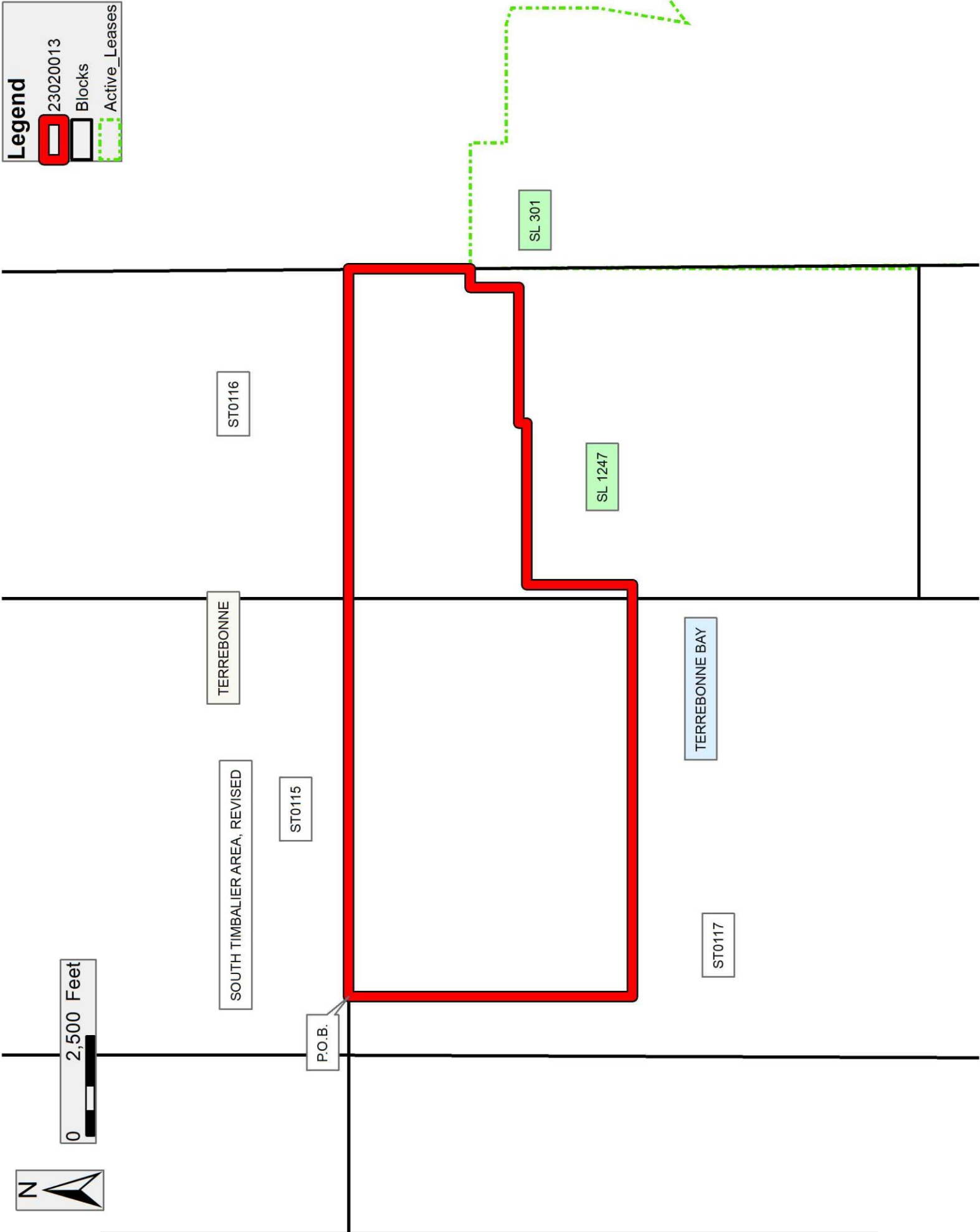


Legend

23020013

Blocks

Active\_Leases





**TRACT 45623 - Terrebonne Parish, Louisiana**

All of the lands now or formerly constituting the beds and bottoms of all water bodies of every nature and description as to which title is vested in the State of Louisiana, together with all islands arising therein and other lands formed by accretion or by reliction, where allowed by law, excepting tax adjudicated lands, and not presently under mineral lease on February 8, 2023, situated in Terrebonne Parish, Louisiana, and more particularly described as follows: Beginning at a point having Coordinates of X = 2,262,078.65 and Y = 179,372.07; thence East 12,198.96 feet to a point having Coordinates of X = 2,274,277.61 and Y = 179,372.07; thence South 4,306.43 feet to a point on the Northern boundary of a portion of State Lease No. 188, as amended, having Coordinates of X = 2,274,277.61 and Y = 175,065.64; thence along the boundary of said portion of said State Lease No. 188 the following courses: South 2,079.29 feet to a point having Coordinates of X = 2,274,277.61 and Y = 172,986.36, South 45 degrees 00 minutes 00 seconds West 360.00 feet to a point having Coordinates of X = 2,274,023.05 and Y = 172,731.80 and West 2,140.41 feet to its Westernmost Northwest corner, also being a Northeast corner of State Lease No. 301, as amended, having Coordinates of X = 2,271,882.65 and Y = 172,731.80; thence along the boundary of said State Lease No. 301 the following courses: West 1,159.59 feet to a point having Coordinates of X = 2,270,723.05 and Y = 172,731.80 and South 53 degrees 30 minutes 00 seconds West 1,760.84 feet to the Southeast corner of State Lease No. 21848, as amended, having Coordinates of X = 2,269,307.59 and Y = 171,684.41; thence along the boundary of said State Lease No. 21848 the following courses: North 15 degrees 49 minutes 18 seconds West 130.54 feet to a point having Coordinates of X = 2,269,272.00 and Y = 171,810.00, North 13 degrees 40 minutes 32 seconds West 693.67 feet to a point having Coordinates of X = 2,269,108.00 and Y = 172,484.01, North 07 degrees 41 minutes 46 seconds West 224.02 feet to a point having Coordinates X = 2,269,078.00 and Y = 172,706.01, North 00 degrees 34 minutes 43 seconds West 198.01 feet to a point having Coordinates X = 2,269,076.00 and Y = 172,904.01, North 06 degrees 36 minutes 50 seconds East 138.92 feet to a point having Coordinates of X = 2,269,092.00 and Y = 173,042.00, North 13 degrees 20 minutes 55 seconds East 242.55 feet to a point having Coordinates of X = 2,269,148.00 and Y = 173,278.00, North 12 degrees 58 minutes 11 seconds East 409.65 feet to a point having Coordinates of X = 2,269,239.94 and Y = 173,677.20 and South 88 degrees 20 minutes 34 seconds West 629.71 feet to the Northwest corner of said State Lease No. 21848 also being a point on the boundary of said State Lease No. 301 having Coordinates of X = 2,268,610.49 and Y = 173,658.99; thence along the boundary of said State Lease No. 301 the following courses: North 1,619.21 feet to a point having Coordinates of X = 2,268,610.49 and Y = 175,278.20, North 71 degrees 10 minutes 13 seconds West 435.40 feet to a point having Coordinates of X = 2,268,198.39 and Y = 175,418.73, West 2,969.74 feet to a point having Coordinates of X = 2,265,228.65 and Y = 175,418.73, North 900.00 feet to a point having Coordinates of X = 2,265,228.65 and Y = 176,318.73 and West 3,149.99 feet to the Northwest corner of said State Lease No. 301, also being the Northeast corner of State Lease No. 1247, as amended, having Coordinates of X = 2,262,078.66 and Y = 176,318.73; thence North 3,053.34 feet to the point of



beginning, containing approximately **1,400.33 acres**, all as more particularly outlined on a plat on file in the Office of Mineral Resources, Department of Natural Resources. All bearings, distances and coordinates are based on Louisiana Coordinate System of 1927, (North or South Zone), where applicable.

NOTE: The above description of the Tract nominated for lease has been provided and corrected, where required, exclusively by the nomination party. Any mineral lease selected from this Tract and awarded by the Louisiana State Mineral and Energy Board shall be without warranty of any kind, either express, implied, or statutory, including, but not limited to, the implied warranties of merchantability and fitness for a particular purpose. Should the mineral lease awarded by the Louisiana State Mineral and Energy Board be subsequently modified, cancelled or abrogated due to the existence of conflicting leases, operating agreements, private claims or other future obligations or conditions which may affect all or any portion of the leased Tract, it shall not relieve the Lessee of the obligation to pay any bonus due thereon to the Louisiana State Mineral and Energy Board, nor shall the Louisiana State Mineral and Energy Board be obligated to refund any consideration paid by the Lessor prior to such modification, cancellation, or abrogation, including, but not limited to, bonuses, rentals and royalties.

NOTE: The State of Louisiana does hereby reserve, and this lease shall be subject to, the imprescriptible right of surface use in the nature of a servitude in favor of the Department of Natural Resources, including its Offices and Commissions, for the sole purpose of implementing, constructing, servicing and maintaining approved coastal zone management and/or restoration projects. Utilization of any and all rights derived under this lease by the mineral lessee, its agents, successors or assigns, shall not interfere with nor hinder the reasonable surface use by the Department of Natural Resources, its Offices or Commissions, as herein above reserved.

Applicant: LOUISIANA BAYOU OIL & GAS CO.

Bidder	Cash Payment	Price/ Acre	Rental	Oil	Gas	Other

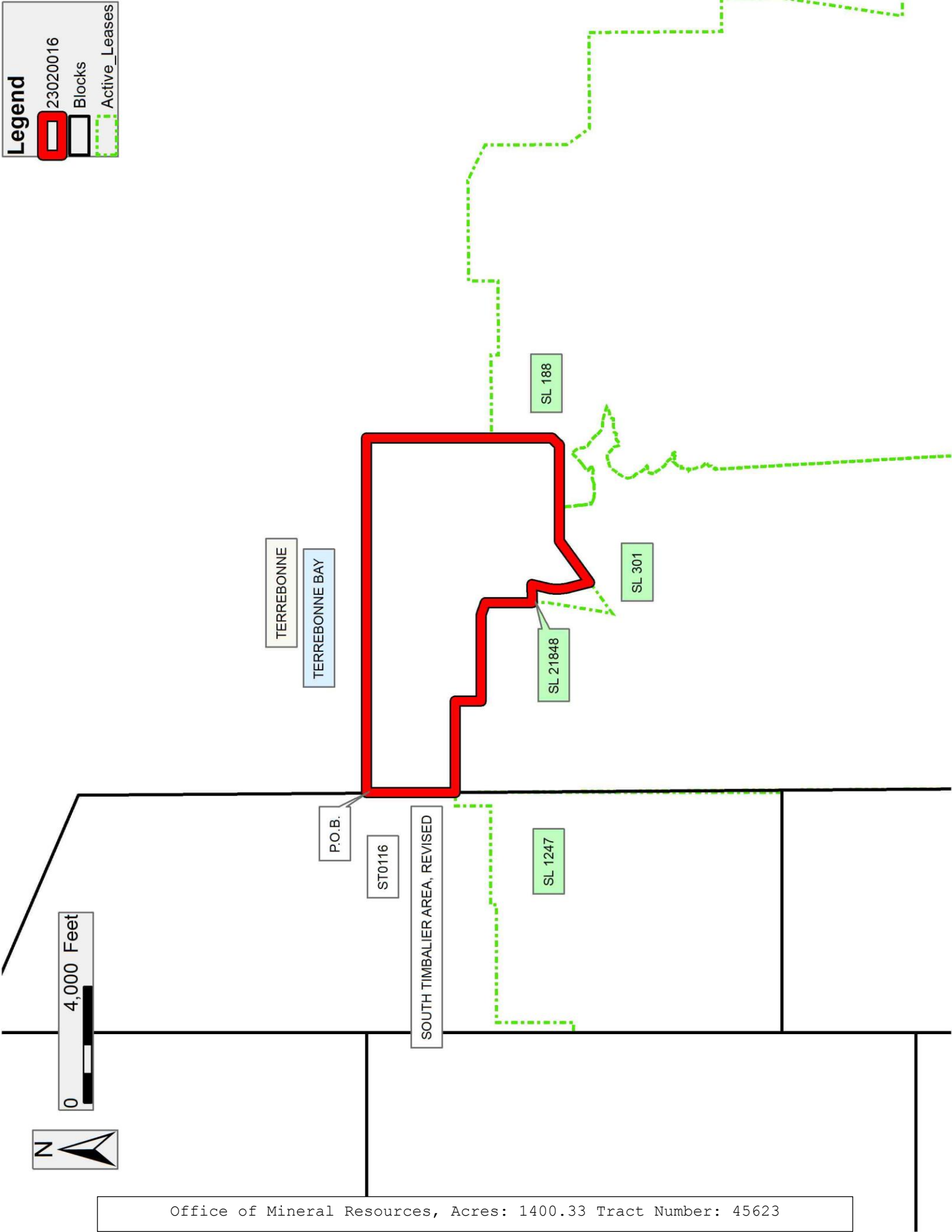


**Legend**

23020016

Blocks

Active\_Leases





**TRACT 45624 - Portion of Blocks 117, and 118, South Timbalier Area, Revised, Terrebonne Parish, Louisiana**

All of the lands now or formerly constituting the beds and bottoms of all water bodies of every nature and description as to which title is vested in the State of Louisiana, together with all islands arising therein and other lands formed by accretion or by reliction, where allowed by law, excepting tax adjudicated lands, and not presently under mineral lease on February 8, 2023, situated in Terrebonne Parish, Louisiana, and more particularly described as follows: Beginning at a point on the West line of Block 117, South Timbalier Area, Revised, having Coordinates of X = 2,242,289.88 and Y = 172,245.48; thence East 11,518.16 feet to a corner on the Western boundary of State Lease No. 1247, as amended, having Coordinates of X = 2,253,808.04 and Y = 172,245.48; thence South 2,167.79 feet along the boundary of said State Lease No. 1247 to the Northeast corner of State Lease No. 2856, as amended, having Coordinates of X = 2,253,808.04 and Y = 170,077.69; thence along the boundary of said State Lease No. 2856 the following courses: West 2,249.00 feet to a point having Coordinates of X = 2,251,559.04 and Y = 170,077.69, and South 1,939.53 feet to the Northernmost corner of State Lease No. 21849, as amended, having Coordinates of X = 2,251,559.04 and Y = 168,138.16; thence along the boundary of said State Lease No. 21849 the following courses: South 45 degrees 28 minutes 13 seconds West 245.52 feet to a point having Coordinates of X = 2,251,384.01 and Y = 167,965.98, South 47 degrees 49 minutes 48 seconds West 372.38 feet to a point having Coordinates of X = 2,251,108.02 and Y = 167,715.99, South 51 degrees 11 minutes 47 seconds West 248.94 feet to a point having Coordinates of X = 2,250,914.02 and Y = 167,559.99, South 54 degrees 46 minutes 57 seconds West 124.85 feet to a point having Coordinates of X = 2,250,812.02 and Y = 167,487.99, South 58 degrees 17 minutes 19 seconds West 289.17 feet to a point having Coordinates of X = 2,250,566.02 and Y = 167,335.99, South 59 degrees 49 minutes 35 seconds West 198.96 feet to a point having Coordinates of X = 2,250,394.02 and Y = 167,235.99, South 60 degrees 32 minutes 47 seconds West 195.23 feet to a point having Coordinates of X = 2,250,224.02 and Y = 167,139.99, and South 64 degrees 46 minutes 44 seconds West 263.54 feet to the Southwest corner of said State Lease No. 21849, also being a point on the boundary of said State Lease No. 2856 having Coordinates of X = 2,249,985.60 and Y = 167,027.69; thence along the boundary of said State Lease No. 2856 the following courses: West 676.56 feet to a point having Coordinates of X = 2,249,309.04 and Y = 167,027.69, and South 320.29 feet to the Northernmost corner of State Lease No. 21850, as amended, having Coordinates of X = 2,249,309.04 and Y = 166,707.40; thence along the boundary of said State Lease No. 21850 the following courses: South 59 degrees 09 minutes 43 seconds West 154.91 feet to a point having Coordinates of X = 2,249,176.03 and Y = 166,627.99, South 56 degrees 05 minutes 37 seconds West 147.00 feet to a point having Coordinates of X = 2,249,054.03 and Y = 166,545.99, South 54 degrees 22 minutes 53 seconds West 164.84 feet to a point having Coordinates of X = 2,248,920.03 and Y = 166,449.99, South 50 degrees 03 minutes 49 seconds West 112.16 feet to a point having Coordinates of X = 2,248,834.03 and Y = 166,377.99, South 43 degrees 18 minutes 55 seconds West 96.21 feet to a point having Coordinates of X = 2,248,768.03



and Y = 166,307.99, South 36 degrees 13 minutes 30 seconds West 213.21 feet to a point having Coordinates of X = 2,248,642.03 and Y = 166,135.99, South 34 degrees 07 minutes 00 seconds West 149.77 feet to a point having Coordinates of X = 2,248,558.03 and Y = 166,012.00, South 30 degrees 01 minutes 06 seconds West 103.94 feet to a point having Coordinates of X = 2,248,506.03 and Y = 165,922.00, South 26 degrees 11 minutes 10 seconds West 135.97 feet to a point having Coordinates of X = 2,248,446.03 and Y = 165,799.99, South 23 degrees 41 minutes 02 seconds West 124.47 feet to a point having Coordinates of X = 2,248,396.03 and Y = 165,686.00, South 18 degrees 41 minutes 56 seconds West 411.73 feet to a point having Coordinates of X = 2,248,264.03 and Y = 165,296.00, South 63 degrees 43 minutes 33 seconds East 176.20 feet to a point having Coordinates of X = 2,248,422.03 and Y = 165,218.00, South 63 degrees 19 minutes 07 seconds East 440.95 feet to a point having Coordinates of X = 2,248,816.03 and Y = 165,020.00, and South 62 degrees 51 minutes 20 seconds East 554.03 feet to the Southernmost corner of said State Lease No. 21850 also being a point on the boundary of said State Lease No. 2856 having Coordinates of X = 2,249,309.04 and Y = 164,767.23; thence South 1,489.54 feet along the boundary of said State Lease No. 2856 to a corner having Coordinates of X = 2,249,309.04 and Y = 163,277.69; thence West 7,019.16 feet to a point on the West line of said Block 117 having Coordinates of X = 2,242,289.88 and Y = 163,277.69; thence North 8,967.79 feet along the West line of said Block 117 to the point of beginning, containing approximately **1,780.76 acres**, all as more particularly outlined on a plat on file in the Office of Mineral Resources, Department of Natural Resources. All bearings, distances and coordinates are based on Louisiana Coordinate System of 1927, (North or South Zone), where applicable.

NOTE: The above description of the Tract nominated for lease has been provided and corrected, where required, exclusively by the nomination party. Any mineral lease selected from this Tract and awarded by the Louisiana State Mineral and Energy Board shall be without warranty of any kind, either express, implied, or statutory, including, but not limited to, the implied warranties of merchantability and fitness for a particular purpose. Should the mineral lease awarded by the Louisiana State Mineral and Energy Board be subsequently modified, cancelled or abrogated due to the existence of conflicting leases, operating agreements, private claims or other future obligations or conditions which may affect all or any portion of the leased Tract, it shall not relieve the Lessee of the obligation to pay any bonus due thereon to the Louisiana State Mineral and Energy Board, nor shall the Louisiana State Mineral and Energy Board be obligated to refund any consideration paid by the Lessor prior to such modification, cancellation, or abrogation, including, but not limited to, bonuses, rentals and royalties.

NOTE: The State of Louisiana does hereby reserve, and this lease shall be subject to, the imprescriptible right of surface use in the nature of a servitude in favor of the Department of Natural Resources, including its Offices and Commissions, for the sole purpose of implementing, constructing, servicing and maintaining approved coastal zone management and/or restoration projects. Utilization of any and all rights derived under this



lease by the mineral lessee, its agents, successors or assigns, shall not interfere with nor hinder the reasonable surface use by the Department of Natural Resources, its Offices or Commissions, as herein above reserved.

NOTE: It appears, according to our records, that a portion of this Tract is located within the restrictive safety fairway area as set out by the Corps of Engineers, U.S. Army and/or the restrictive anchorage area as set out by the U.S. Coast Guard.

Applicant: LOUISIANA BAYOU OIL & GAS CO.

Bidder	Cash Payment	Price/ Acre	Rental	Oil	Gas	Other





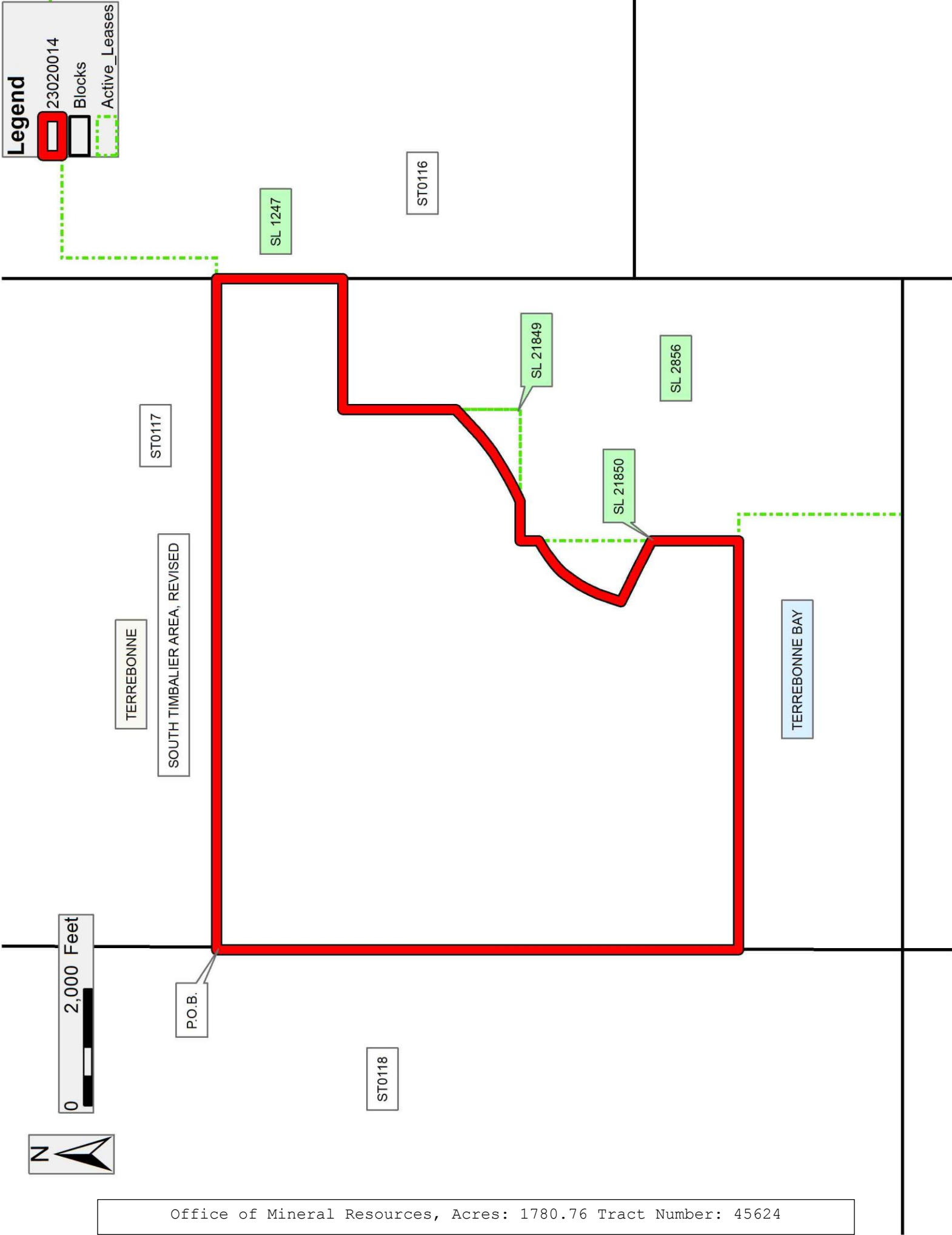
0 2,000 Feet

Legend

23020014

Blocks

Active\_Leases





**TRACT 45625 - Portion of Blocks 117, 118, 121, and 122, South Timbalier Area, Revised, Terrebonne Parish, Louisiana**

All of the lands now or formerly constituting the beds and bottoms of all water bodies of every nature and description as to which title is vested in the State of Louisiana, together with all islands arising therein and other lands formed by accretion or by reliction, where allowed by law, excepting tax adjudicated lands, and not presently under mineral lease on February 8, 2023, situated in Terrebonne Parish, Louisiana, and more particularly described as follows: Beginning at a point on the West line of Block 117, South Timbalier Area, Revised, having Coordinates of X = 2,242,289.88 and Y = 163,277.69; thence East 7,019.16 feet to a corner on the Western boundary of State Lease No. 2856, as amended, having Coordinates of X = 2,249,309.04 and Y = 163,277.69; thence along the boundary of said State Lease No. 2856 the following courses: East 450.00 feet to a point having Coordinates of X = 2,249,759.04 and Y = 163,277.69, South 2,814.89 feet to a point having Coordinates of X = 2,249,759.04 and Y = 160,462.80, and East 80.61 feet to the Northwest corner of State Lease No. 21991 having Coordinates of X = 2,249,839.65 and Y = 160,462.80; thence along the boundary of said State Lease No. 21991 the following courses: South 3,148.11 feet to a point having Coordinates of X = 2,249,839.65 and Y = 157,314.69, and North 65 degrees 47 minutes 22 seconds East 4,351.10 feet to the Southeast corner of said State Lease No. 21991 also being a point on the Western boundary of State Lease No. 1249, as amended, having Coordinates of X = 2,253,808.04 and Y = 159,099.04; thence along the boundary of said State Lease No. 1249 the following courses: South 5,060.62 feet to a point having Coordinates of X = 2,253,808.04 and Y = 154,038.42, East 20.42 feet to a point having Coordinates of X = 2,253,828.46 and Y = 154,038.42, and South 09 degrees 41 minutes 16 seconds East 810.35 feet to a point on the Louisiana Coastline, as decreed by the Supreme Court of the United States, as determined by a Special Master appointed therein, in litigation styled *United States v. State of Louisiana et al No. 9 Original*, in 1975, having Coordinates of X = 2,253,964.83 and Y = 153,239.62; thence along said Coastline the following: Northwesterly on a straight line to a point having Coordinates of X = 2,253,306.00 and Y = 154,102.00 and Southwesterly on a straight line to a point on the West line of Block 121, South Timbalier Area, Revised, having Coordinates of X = 2,242,289.88 and Y = 151,413.40; thence North 11,864.29 feet to the point of beginning, containing approximately **2,304.08 acres**, all as more particularly outlined on a plat on file in the Office of Mineral Resources, Department of Natural Resources. All bearings, distances and coordinates are based on Louisiana Coordinate System of 1927, (North or South Zone), where applicable.

NOTE: The above description of the Tract nominated for lease has been provided and corrected, where required, exclusively by the nomination party. Any mineral lease selected from this Tract and awarded by the Louisiana State Mineral and Energy Board shall be without warranty of any kind, either express, implied, or statutory, including, but not limited to, the implied warranties of merchantability and fitness for a particular purpose. Should the mineral lease awarded by the Louisiana State Mineral and Energy Board be



subsequently modified, cancelled or abrogated due to the existence of conflicting leases, operating agreements, private claims or other future obligations or conditions which may affect all or any portion of the leased Tract, it shall not relieve the Lessee of the obligation to pay any bonus due thereon to the Louisiana State Mineral and Energy Board, nor shall the Louisiana State Mineral and Energy Board be obligated to refund any consideration paid by the Lessor prior to such modification, cancellation, or abrogation, including, but not limited to, bonuses, rentals and royalties.

NOTE: The State of Louisiana does hereby reserve, and this lease shall be subject to, the imprescriptible right of surface use in the nature of a servitude in favor of the Department of Natural Resources, including its Offices and Commissions, for the sole purpose of implementing, constructing, servicing and maintaining approved coastal zone management and/or restoration projects. Utilization of any and all rights derived under this lease by the mineral lessee, its agents, successors or assigns, shall not interfere with nor hinder the reasonable surface use by the Department of Natural Resources, its Offices or Commissions, as herein above reserved.

NOTE: It appears, according to our records, that a portion of this Tract is located within the restrictive safety fairway area as set out by the Corps of Engineers, U.S. Army and/or the restrictive anchorage area as set out by the U.S. Coast Guard.

Applicant: LOUISIANA BAYOU OIL & GAS CO.

Bidder	Cash Payment	Price/ Acre	Rental	Oil	Gas	Other

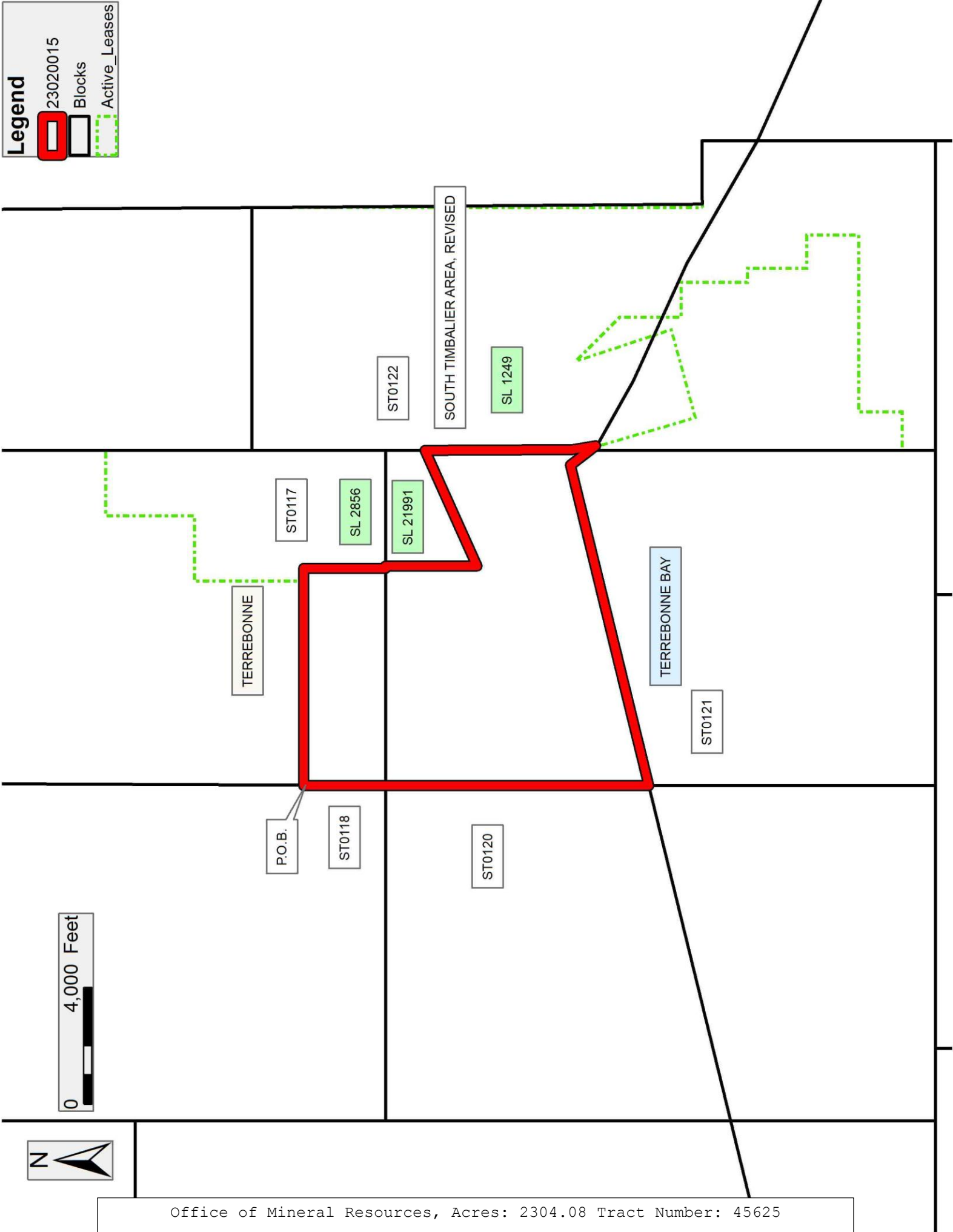


**Legend**

23020015

Blocks

Active\_Leases



Office of Mineral Resources, Acres: 2304.08 Tract Number: 45625