

TRACT 45632 - Red River Parish, Louisiana

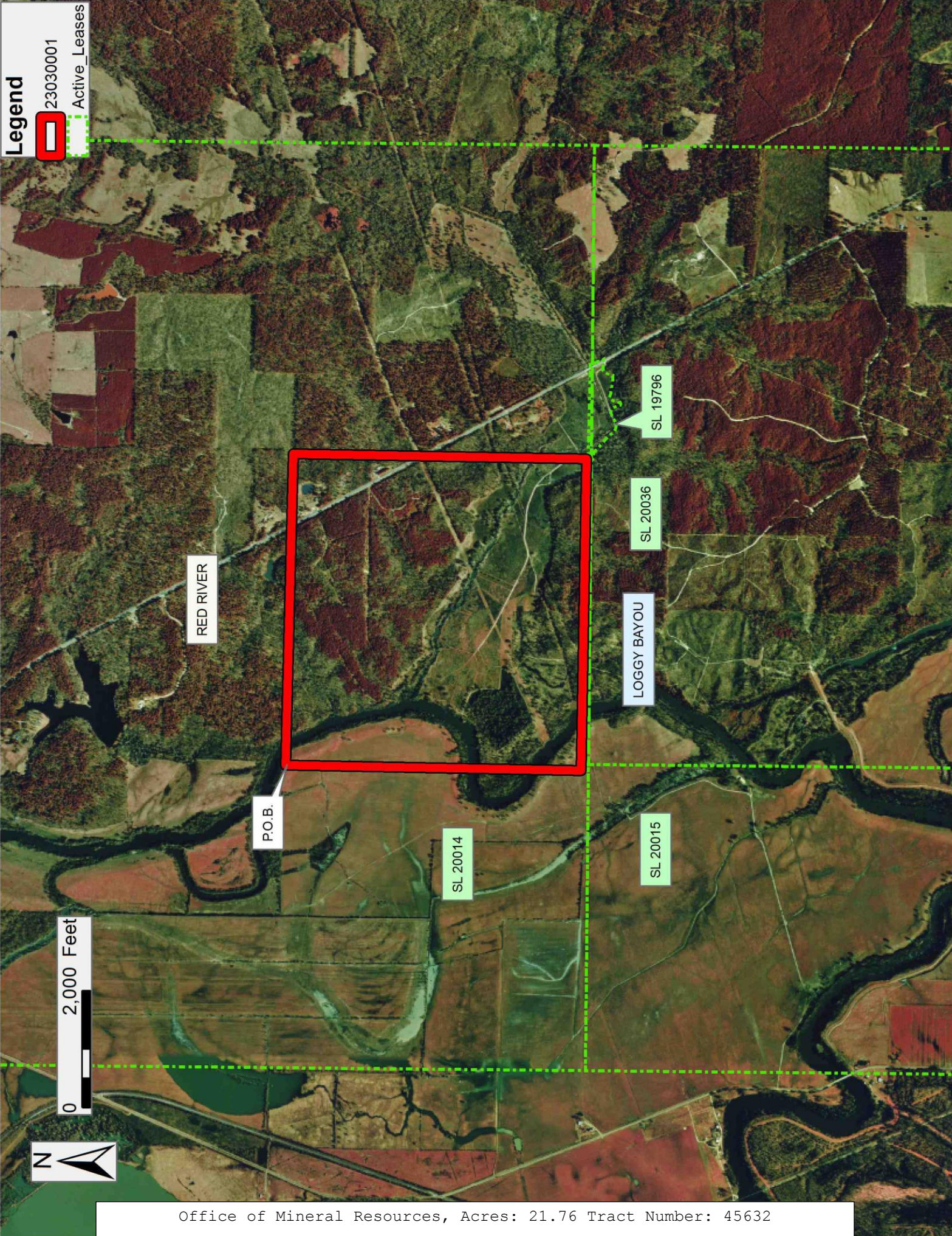
All of the lands now or formerly constituting the beds and bottoms of all water bodies of every nature and description as to which title is vested in the State of Louisiana, together with all islands arising therein and other lands formed by accretion or by reliction, where allowed by law, excepting tax adjudicated lands, and not presently under mineral lease on March 8, 2023, situated in Red River Parish, Louisiana, and more particularly described as follows: Beginning at a point on the interior boundary of State Lease No. 20014, as amended having Coordinates of X = 1,714,139.00 and Y = 566,488.00; thence along the interior boundaries of said State Lease No. 20014 the following courses as follows: South 89 degrees 01 minutes 59 seconds East 2,687.51 feet to a point having Coordinates of X = 1,716,826.13 and Y = 566,442.65, South 89 degrees 08 minutes 09 seconds East 2,643.98 feet to a point having Coordinates of X = 1,719,469.81 and Y = 566,402.77, South 00 degrees 27 minutes 32 seconds West 5,020.92 feet to a point having Coordinates of X = 1,719,429.59 and Y = 561,382.01, North 89 degrees 32 minutes 29 seconds West 5,335.06 feet a point having Coordinates of X = 1,714,094.70 and Y = 561,424.71 and North 00 degrees 30 minutes 04 seconds East 5,063.48 feet to the point of beginning, containing approximately **21.76 acres**, all as more particularly outlined on a plat on file in the Office of Mineral Resources, Department of Natural Resources. All bearings, distances and coordinates are based on Louisiana Coordinate System of 1927, (North or South Zone), where applicable.

NOTE: The above description of the Tract nominated for lease has been provided and corrected, where required, exclusively by the nomination party. Any mineral lease selected from this Tract and awarded by the Louisiana State Mineral and Energy Board shall be without warranty of any kind, either express, implied, or statutory, including, but not limited to, the implied warranties of merchantability and fitness for a particular purpose. Should the mineral lease awarded by the Louisiana State Mineral and Energy Board be subsequently modified, cancelled or abrogated due to the existence of conflicting leases, operating agreements, private claims or other future obligations or conditions which may affect all or any portion of the leased Tract, it shall not relieve the Lessee of the obligation to pay any bonus due thereon to the Louisiana State Mineral and Energy Board, nor shall the Louisiana State Mineral and Energy Board be obligated to refund any consideration paid by the Lessor prior to such modification, cancellation, or abrogation, including, but not limited to, bonuses, rentals and royalties.

Applicant: CYPRESS ENERGY CORPORATION

Bidder	Cash Payment	Price/ Acre	Rental	Oil	Gas	Other

Legend
23030001
Active_Leases



TRACT 45633 - Calcasieu Parish, Louisiana

All of the lands now or formerly constituting the beds and bottoms of all water bodies of every nature and description as to which title is vested in the State of Louisiana, together with all islands arising therein and other lands formed by accretion or by reliction, where allowed by law, excepting tax adjudicated lands, and not presently under mineral lease on March 8, 2023, situated in Calcasieu Parish, Louisiana, and more particularly described as follows: Beginning at a point having Coordinates of X = 1,433,000.00 and Y = 609,200.00; thence East 10,000.00 feet to a point having Coordinates of X = 1,443,000.00 and Y = 609,200.00; thence South 11,763.19 feet to a point having Coordinates of X = 1,443,000.00 and Y = 597,436.81; thence North 89 degrees 11 minutes 44 seconds West 7,405.02 feet to a point being the Southeast corner of State Lease No. 15691, as amended, having Coordinates of X = 1,435,595.71 and Y = 597,540.79; thence along the boundary of said State Lease No. 15691, as amended, the following courses: North 00 degrees 48 minutes 16 seconds East 2,400.00 feet to a point having Coordinates of X = 1,435,629.41 and Y = 599,940.55; thence North 89 degrees 11 minutes 44 seconds West 1,450.00 feet to a point having Coordinates of X = 1,434,179.55 and Y = 599,960.91; thence South 00 degrees 48 minutes 16 Seconds West 2,400.00 feet to a point being the Southwest corner of said State Lease No. 15691, as amended, having Coordinates of X = 1,434,145.85 and Y = 597,561.15; thence North 89 degrees 11 minutes 43 seconds West 1,145.97 feet to a point having Coordinates of X = 1,433,000.00 and Y = 597,577.24; thence North 11,622.76 feet to the point of beginning, **LESS AND EXCEPT** all that portion of State Lease No. 22120 which lies entirely within the above described tract, being more fully described as follows: Commencing at a point being the point of beginning of the above described nominated tract having coordinates of X = 1,433,000.00 and Y = 609,200.00; thence South 22 degrees 25 minutes 05 seconds East 7,953.18 feet to a point being a point of beginning of said State Lease No. 22120; thence South 88 degrees 38 minutes 29 seconds East 3,200.00 feet to a point having Coordinates of X = 1,439,232.14 and Y = 601,772.01; thence South 00 degrees 50 minutes 59 seconds West 1,336.72 feet to a point having Coordinates of X = 1,439,212.32 and Y = 600,435.44; thence North 88degrees 55 minutes 00 seconds West 3,199.97 feet to a point having Coordinates of X = 1,436,012.92 and Y = 600,495.95; thence North 00 degrees 51 minutes 10 seconds East 1,352.08 feet to a point of beginning, the nominated tract containing approximately **170 acres**, all as more particularly outlined on a plat on file in the Office of Mineral Resources, Department of Natural Resources. All bearings, distances and coordinates are based on Louisiana Coordinate System of 1927, (North or South Zone), where applicable.

NOTE: The above description of the Tract nominated for lease has been provided and corrected, where required, exclusively by the nomination party. Any mineral lease selected from this Tract and awarded by the Louisiana State Mineral and Energy Board shall be without warranty of any kind, either express, implied, or statutory, including, but not limited to, the implied warranties of merchantability and fitness for a particular purpose. Should the mineral lease awarded by the Louisiana State Mineral and Energy Board be

subsequently modified, cancelled or abrogated due to the existence of conflicting leases, operating agreements, private claims or other future obligations or conditions which may affect all or any portion of the leased Tract, it shall not relieve the Lessee of the obligation to pay any bonus due thereon to the Louisiana State Mineral and Energy Board, nor shall the Louisiana State Mineral and Energy Board be obligated to refund any consideration paid by the Lessor prior to such modification, cancellation, or abrogation, including, but not limited to, bonuses, rentals and royalties.

NOTE: A portion of this tract is located on or adjacent to a Louisiana designated Natural and Scenic River. The applicant must obtain authorization from the Louisiana Department of Wildlife and Fisheries, Scenic Rivers Program prior to initiating any activities within or adjacent to the river, including, but not limited to, crossings by roads and pipelines, well sites, production facilities and water withdrawals.

Applicant: STAFF OFFICE OF MINERAL RESOURCES

Bidder	Cash Payment	Price/ Acre	Rental	Oil	Gas	Other

Legend

23030002

Active_Leases

