

TRACT 45634 - Portion of Blocks 23, and 26, Breton Sound Area, Plaquemines Parish, Louisiana

The beds and bottoms of all water bodies belonging to the State of Louisiana located in Blocks 23, and 26, Breton Sound Area, together with any present lands formed by accretion to the shoreline or islands formed therein, located in Plaquemines Parish, Louisiana, owned by and not presently under mineral lease as of April 12, 2023, from the State of Louisiana, the geographical area of which is more fully described as follows: Beginning at a point on being on the Southern boundary Block 26 and the Northern boundary of Block 39, Breton Sound Area, having Coordinates of X = 2,729,509.92 and Y = 322,330.00; thence North 14,231.98 feet to a point having Coordinates X = 2,729,509.92 and Y = 336,561.98; said point being on the Louisiana Coastline, as decreed by the Supreme Court of the United States, as determined by a Special Master appointed therein, in litigation styled *United States v. State of Louisiana et al No. 9 Original*, in 1975; thence Northeasterly along said coastline to the Southeast corner of State Lease No. 22079 having Coordinates X = 2,730,974.22 and Y = 338,487.63; thence South 75 degrees 05 minutes 12 seconds East 4787.03 feet along the boundary of said State Lease No. 22079 to a point having Coordinates X = 2,735,600.00 and Y = 337,255.65; thence South 14,925.65 feet to a point on the Southwestern boundary of Block 26, Breton Sound Area, having Coordinates X = 2,735,600.00 and Y = 322,330.00; thence West 6,090.08 feet along the southern boundary of said Block 26, Breton Sound Area, to the point of beginning, containing approximately **2,161.20 acres**, all as more particularly outlined on a plat on file in the Office of Mineral Resources, Department of Natural Resources. All bearings, distances and coordinates are based on Louisiana Coordinate System of 1927, (North or South Zone).

NOTE: The above description of the Tract nominated for lease has been provided and corrected, where required, exclusively by the nomination party. Any mineral lease selected from this Tract and awarded by the Louisiana State Mineral and Energy Board shall be without warranty of any kind, either express, implied, or statutory, including, but not limited to, the implied warranties of merchantability and fitness for a particular purpose. Should the mineral lease awarded by the Louisiana State Mineral and Energy Board be subsequently modified, cancelled or abrogated due to the existence of conflicting leases, operating agreements, private claims or other future obligations or conditions which may affect all or any portion of the leased Tract, it shall not relieve the Lessee of the obligation to pay any bonus due thereon to the Louisiana State Mineral and Energy Board, nor shall the Louisiana State Mineral and Energy Board be obligated to refund any consideration paid by the Lessor prior to such modification, cancellation, or abrogation, including, but not limited to, bonuses, rentals and royalties.

NOTE: The State of Louisiana does hereby reserve, and this lease shall be subject to, the imprescriptible right of surface use in the nature of a servitude in favor of the Department of Natural Resources, including its Offices and Commissions, for the sole purpose of implementing, constructing, servicing and maintaining approved coastal zone management and/or

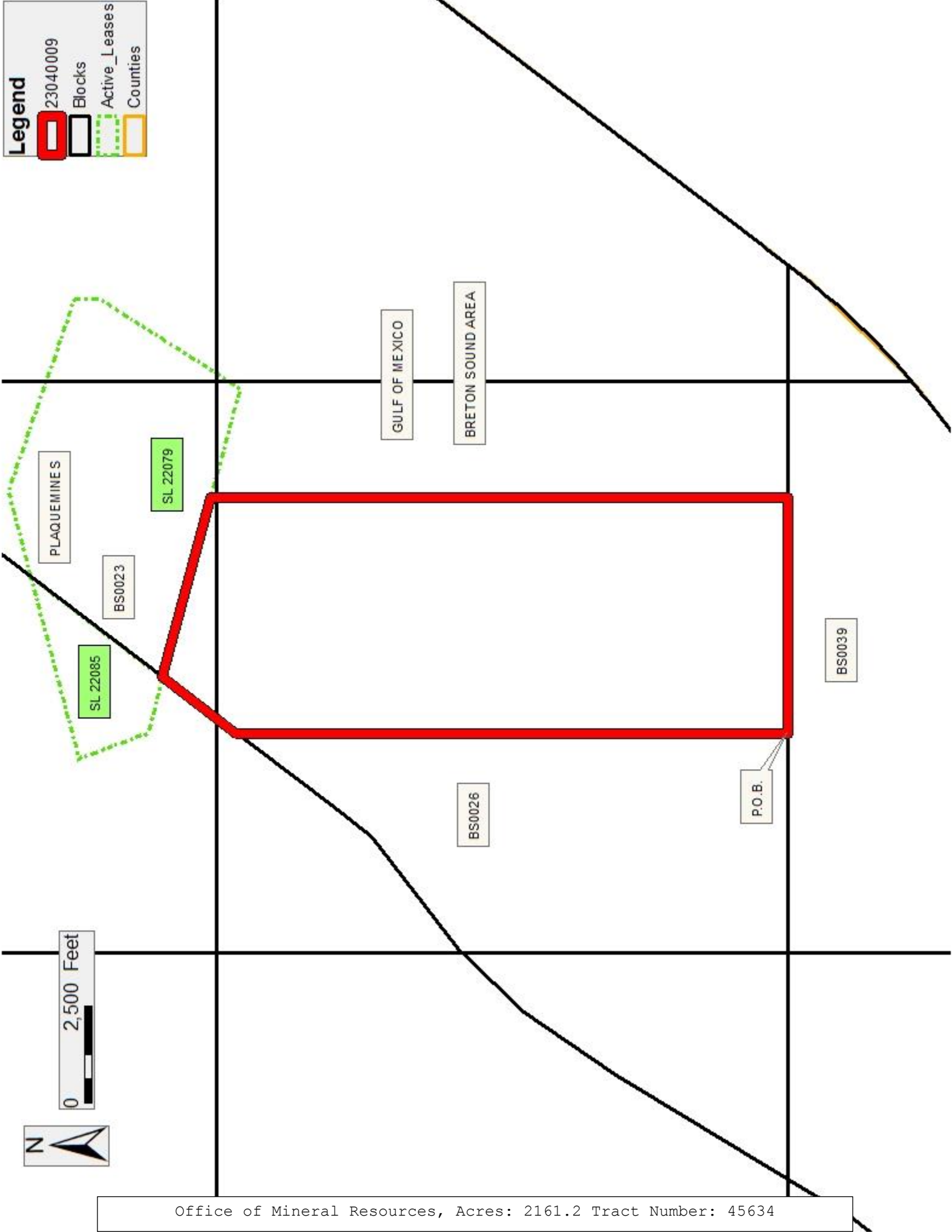
restoration projects. Utilization of any and all rights derived under this lease by the mineral lessee, its agents, successors or assigns, shall not interfere with nor hinder the reasonable surface use by the Department of Natural Resources, its Offices or Commissions, as herein above reserved.

Applicant: CYPRESS ENERGY PARTNERS, LLC

Bidder	Cash Payment	Price/ Acre	Rental	Oil	Gas	Other

Legend

- 23040009
- Blocks
- Active_Leases
- Countries



TRACT 45635 - Portion of Blocks 25, and 26, Breton Sound Area, Plaquemines Parish, Louisiana

The beds and bottoms of all water bodies belonging to the State of Louisiana located in Blocks 25, and 26, Breton Sound Area, together with any present lands formed by accretion to the shoreline or islands formed therein, located in Plaquemines Parish, Louisiana, owned by and not presently under mineral lease as of April 12, 2023, from the State of Louisiana, the geographical area of which is more fully described as follows: Beginning at the Southernmost tip of State Lease No. 22079 having Coordinates of X = 2,738,418.79 and Y = 336,504.92; thence North 32 degrees 33 minutes 46 seconds East 682.13 feet along the Southeastern boundary of said State Lease No. 22079 to a point having Coordinates X = 2,738,785.93 and Y = 337,079.82, said point is also on the Southern boundary of Block 24 and the Northern boundary of Block 25, Breton Sound Area; thence East 2,971.07 feet along the Northern boundary line of Block 25, Breton Sound Area, to a point having Coordinates X = 2,741,757.00 and Y = 337,079.82; thence South 12,173.82 feet to a point being the Westernmost corner of State Lease No. 19718, as amended, and having Coordinates X = 2,741,757.00 and Y = 324,906.00; thence South 2,358.94 feet to a point having Coordinates X = 2,741,757.00 and Y = 322,547.06, being a point on the Three Mile Line, as decreed by the Supreme Court of the United States, as determined by a Special Master appointed therein, in litigation styled *United States v. State of Louisiana et al No. 9 Original*, in 1975; thence Southwesterly along the Three Mile Line in a straight line to a point having Coordinates X = 2,741,586.04 and Y = 322,330.00, said point also being on the Southern boundary of Block 25, Breton Sound Area; thence West 5,986.04 feet along the Southern boundary of Block 25 and Block 26, Breton Sound Area, to a point having Coordinates X = 2,735,600.00 and Y = 322,330.00; thence North 14,925.65 feet to a point on the Southern boundary of said State Lease No. 22079 having Coordinates X = 2,735,600.00 and Y = 337,255.65; thence South 75 degrees 05 minutes 12 seconds East 2917.05 feet along the boundary of said State Lease No. 22079, to the point of beginning, containing approximately **2,069.06 acres, LESS AND EXCEPT** that portion thereof, if any, lying seaward of the line three nautical miles from the coast line of Louisiana, as said three mile line has been decreed by the Supreme Court of the United States, as determined by a Special Master appointed therein, in litigation styled **United States v. State of Louisiana et al No. 9 Original**, in 1975, all as more particularly outlined on a plat in the Office of Mineral Resources, Department of Natural Resources. All bearings, distances and coordinates are based on the Louisiana Coordinate System of 1927, (South Zone).

NOTE: The above description of the Tract nominated for lease has been provided and corrected, where required, exclusively by the nomination party. Any mineral lease selected from this Tract and awarded by the Louisiana State Mineral and Energy Board shall be without warranty of any kind, either express, implied, or statutory, including, but not limited to, the implied warranties of merchantability and fitness for a particular purpose. Should the mineral lease awarded by the Louisiana State Mineral and Energy Board be subsequently modified, cancelled or abrogated due to the existence of

conflicting leases, operating agreements, private claims or other future obligations or conditions which may affect all or any portion of the leased Tract, it shall not relieve the Lessee of the obligation to pay any bonus due thereon to the Louisiana State Mineral and Energy Board, nor shall the Louisiana State Mineral and Energy Board be obligated to refund any consideration paid by the Lessor prior to such modification, cancellation, or abrogation, including, but not limited to, bonuses, rentals and royalties.

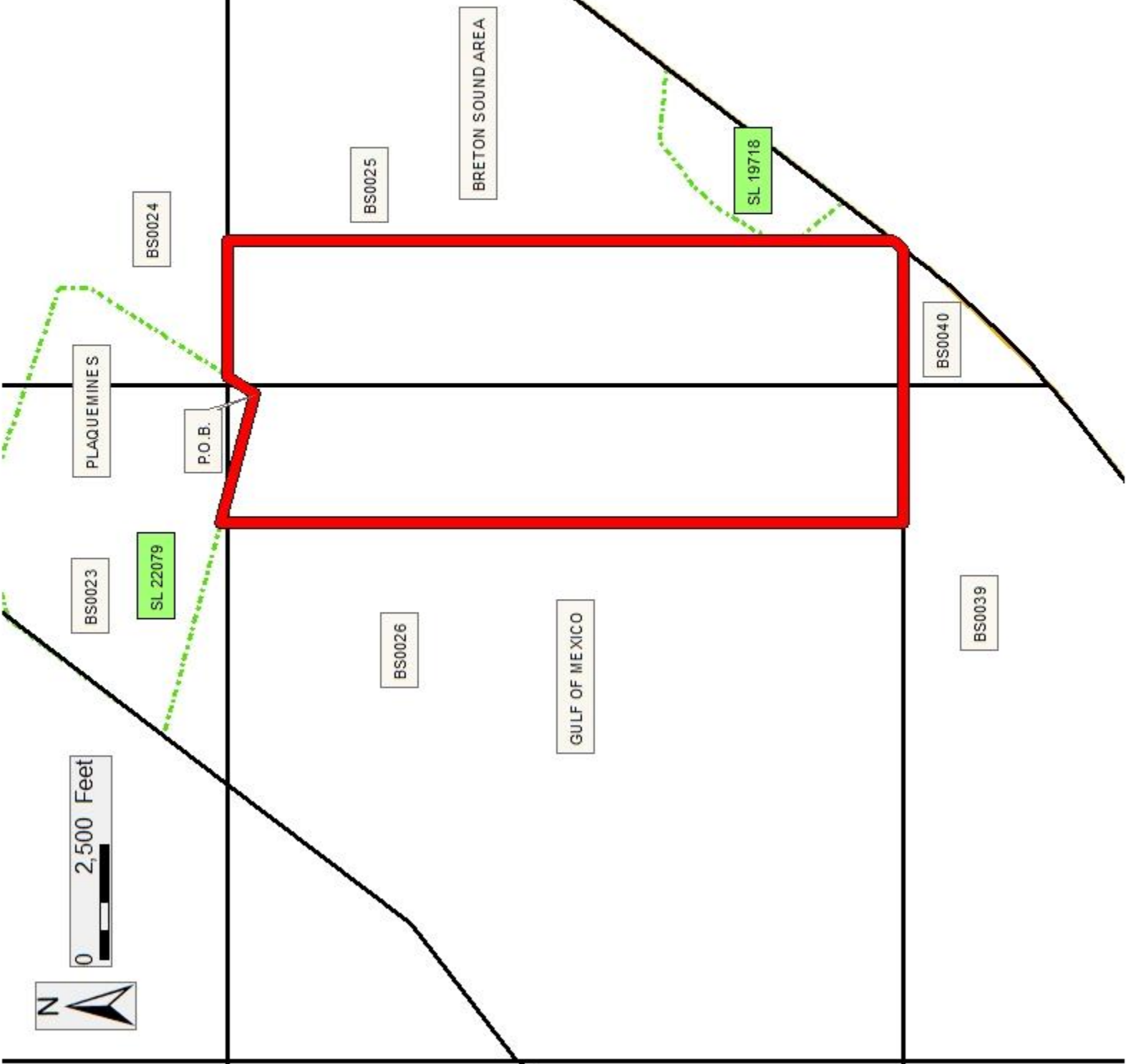
NOTE: The State of Louisiana does hereby reserve, and this lease shall be subject to, the imprescriptible right of surface use in the nature of a servitude in favor of the Department of Natural Resources, including its Offices and Commissions, for the sole purpose of implementing, constructing, servicing and maintaining approved coastal zone management and/or restoration projects. Utilization of any and all rights derived under this lease by the mineral lessee, its agents, successors or assigns, shall not interfere with nor hinder the reasonable surface use by the Department of Natural Resources, its Offices or Commissions, as herein above reserved.

Applicant: CYPRESS ENERGY PARTNERS, LLC

Bidder	Cash Payment	Price/ Acre	Rental	Oil	Gas	Other

Legend

- 23040010
- Blocks
- Active_Leases
- Counties



TRACT 45636 - Portion of Blocks 26, and 27, Breton Sound Area, Plaquemines Parish, Louisiana

The beds and bottoms of all water bodies belonging to the State of Louisiana located in Blocks 26, and 27, Breton Sound Area, together with any present lands formed by accretion to the shoreline or islands formed therein, located in Plaquemines Parish, Louisiana, owned by and not presently under mineral lease as of April 12, 2023, from the State of Louisiana, the geographical area of which is more fully described as follows: Beginning at a point having Coordinates of X = 2,723,850.00 and Y = 322,330.00 being the same as the common corner of Block 26, Block 27, Block 38, and Block 39, Breton Sound Area; thence West 5,840.00 feet along the South line of Block 27, Breton Sound Area, to a point having Coordinates of X = 2,718,010.00 and Y = 322,330.00, being on the Louisiana Coastline as decreed by the Supreme Court of the United States, as determined by a Special Master appointed therein, in litigation styled United States v. State of Louisiana et al No. 9 Original, in 1975; thence along said Coastline the following courses: Northeasterly in a straight line to a point having Coordinates of X = 2,720,696.00 and Y = 326,779.00; Northeasterly in a straight line to a point having Coordinates of X = 2,721,206.00 and Y = 327,530.00; Northeasterly in a straight line to a point having Coordinates of X = 2,722,231.00 and Y = 329,172.00; Northeasterly in a straight line to a point on the common block line between Block 26 and Block 27, Breton Sound Area, having Coordinates of X = 2,723,975.00 and Y = 330,868.00; Northeasterly in a straight line to a point having Coordinates of X = 2,726,852.00 and Y = 333,103.00; Northeasterly in a straight line to a point having Coordinates of X = 2,727,653.00 and Y = 334,120.00; Northeasterly in a straight line to a point having Coordinates of X = 2,729,509.92 and Y = 336,561.98; thence South 14,231.98 feet to a point having Coordinates of X = 2,729,509.92 and Y = 322,330.00; thence West 5,659.92 to the point of beginning, containing approximately **2,039.58 acres**, all as more particularly outlined on a plat on file in the Office of Mineral Resources, Department of Natural Resources. All bearings, distances and coordinates are based on Louisiana Coordinate System of 1927, (North or South Zone).

NOTE: The above description of the Tract nominated for lease has been provided and corrected, where required, exclusively by the nomination party. Any mineral lease selected from this Tract and awarded by the Louisiana State Mineral and Energy Board shall be without warranty of any kind, either express, implied, or statutory, including, but not limited to, the implied warranties of merchantability and fitness for a particular purpose. Should the mineral lease awarded by the Louisiana State Mineral and Energy Board be subsequently modified, cancelled or abrogated due to the existence of conflicting leases, operating agreements, private claims or other future obligations or conditions which may affect all or any portion of the leased Tract, it shall not relieve the Lessee of the obligation to pay any bonus due thereon to the Louisiana State Mineral and Energy Board, nor shall the Louisiana State Mineral and Energy Board be obligated to refund any consideration paid by the Lessor prior to such modification, cancellation, or abrogation, including, but not limited to, bonuses, rentals and royalties.

NOTE: The State of Louisiana does hereby reserve, and this lease shall be subject to, the imprescriptible right of surface use in the nature of a servitude in favor of the Department of Natural Resources, including its Offices and Commissions, for the sole purpose of implementing, constructing, servicing and maintaining approved coastal zone management and/or restoration projects. Utilization of any and all rights derived under this lease by the mineral lessee, its agents, successors or assigns, shall not interfere with nor hinder the reasonable surface use by the Department of Natural Resources, its Offices or Commissions, as herein above reserved.

Applicant: CYPRESS ENERGY PARTNERS, LLC

Bidder	Cash Payment	Price/ Acre	Rental	Oil	Gas	Other

Legend


23040005


Blocks


Counties



TRACT 45637 - Portion of Block 38, Breton Sound Area, Plaquemines Parish, Louisiana

The beds and bottoms of all water bodies belonging to the State of Louisiana located in Block 38, Breton Sound Area, together with any present lands formed by accretion to the shoreline or islands formed therein, located in Plaquemines Parish, Louisiana, owned by and not presently under mineral lease as of April 12, 2023, from the State of Louisiana, the geographical area of which is more fully described as follows: Beginning at a point having Coordinates of X = 2,723,850.00 and Y = 307,580.00, and being the same as the common corner of Block 38, Block 39, Block 42, and Block 43, Breton Sound Area; thence along the Southern boundary of Block 38, Breton Sound Area, West 7,335.10 feet to a point having Coordinates X = 2,716,514.90 and Y = 307,580.00; thence North 12,457.15 feet to a point having Coordinates of X = 2,716,514.90 and Y = 320,037.15, said point being on the Louisiana Coastline, as decreed by the Supreme Court of the United States, as determined by a Special Master appointed therein, in litigation styled *United States v. State of Louisiana et al No. 9 Original*, in 1975; thence along said Coastline the following courses: Northeasterly in a straight line to a point having Coordinates X = 2,717,012 and Y = 320,677; Northeasterly in a straight line to a point having Coordinates X = 2,718,010.00 and Y = 322,330.00; thence East 5,840.00 feet to a point having Coordinates of X = 2,723,850.00 and Y = 322,330.00; thence South 14,750.00 feet to the point of beginning, containing approximately **2,442.31 acres**, all as more particularly outlined on a plat on file in the Office of Mineral Resources, Department of Natural Resources. All bearings, distances and coordinates are based on Louisiana Coordinate System of 1927, (North or South Zone).

NOTE: The above description of the Tract nominated for lease has been provided and corrected, where required, exclusively by the nomination party. Any mineral lease selected from this Tract and awarded by the Louisiana State Mineral and Energy Board shall be without warranty of any kind, either express, implied, or statutory, including, but not limited to, the implied warranties of merchantability and fitness for a particular purpose. Should the mineral lease awarded by the Louisiana State Mineral and Energy Board be subsequently modified, cancelled or abrogated due to the existence of conflicting leases, operating agreements, private claims or other future obligations or conditions which may affect all or any portion of the leased Tract, it shall not relieve the Lessee of the obligation to pay any bonus due thereon to the Louisiana State Mineral and Energy Board, nor shall the Louisiana State Mineral and Energy Board be obligated to refund any consideration paid by the Lessor prior to such modification, cancellation, or abrogation, including, but not limited to, bonuses, rentals and royalties.

NOTE: The State of Louisiana does hereby reserve, and this lease shall be subject to, the imprescriptible right of surface use in the nature of a servitude in favor of the Department of Natural Resources, including its Offices and Commissions, for the sole purpose of implementing, constructing, servicing and maintaining approved coastal zone management and/or restoration projects. Utilization of any and all rights derived under this

lease by the mineral lessee, its agents, successors or assigns, shall not interfere with nor hinder the reasonable surface use by the Department of Natural Resources, its Offices or Commissions, as herein above reserved.

Applicant: CYPRESS ENERGY PARTNERS, LLC

Bidder	Cash Payment	Price/ Acre	Rental	Oil	Gas	Other

Legend

 23040007

 Blocks

 Counties



TRACT 45638 - Portion of Block 39, Breton Sound Area, Plaquemines Parish, Louisiana

The beds and bottoms of all water bodies belonging to the State of Louisiana located in Block 39, Breton Sound Area, together with any present lands formed by accretion to the shoreline or islands formed therein, located in Plaquemines Parish, Louisiana, owned by and not presently under mineral lease as of April 12, 2023, from the State of Louisiana, the geographical area of which is more fully described as follows: Beginning at a point having Coordinates of X = 2,723,850.00 and Y = 307,580.00, and being the same as the common corner of Block 38, Block 39, Block 42, and Block 43, Breton Sound Area; thence North 14,750.00 feet to a point having Coordinates X = 2,723,850.00 and Y = 322,330.00 and being the same as the common corner of Block 26, Block 27, Block 38, and Block 39, Breton Sound Area; thence East 5,659.92 feet to a point having Coordinates X = 2,729,509.92 and Y = 322,330.00; thence South 14,750.00 feet to a point having Coordinates X = 2,729,509.92 and Y = 307,580.00; thence West 5,659.92 feet to the point of beginning, containing approximately **1,916.52 acres**, all as more particularly outlined on a plat on file in the Office of Mineral Resources, Department of Natural Resources. All bearings, distances and coordinates are based on Louisiana Coordinate System of 1927, (North or South Zone).

NOTE: The above description of the Tract nominated for lease has been provided and corrected, where required, exclusively by the nomination party. Any mineral lease selected from this Tract and awarded by the Louisiana State Mineral and Energy Board shall be without warranty of any kind, either express, implied, or statutory, including, but not limited to, the implied warranties of merchantability and fitness for a particular purpose. Should the mineral lease awarded by the Louisiana State Mineral and Energy Board be subsequently modified, cancelled or abrogated due to the existence of conflicting leases, operating agreements, private claims or other future obligations or conditions which may affect all or any portion of the leased Tract, it shall not relieve the Lessee of the obligation to pay any bonus due thereon to the Louisiana State Mineral and Energy Board, nor shall the Louisiana State Mineral and Energy Board be obligated to refund any consideration paid by the Lessor prior to such modification, cancellation, or abrogation, including, but not limited to, bonuses, rentals and royalties.

NOTE: The State of Louisiana does hereby reserve, and this lease shall be subject to, the imprescriptible right of surface use in the nature of a servitude in favor of the Department of Natural Resources, including its Offices and Commissions, for the sole purpose of implementing, constructing, servicing and maintaining approved coastal zone management and/or restoration projects. Utilization of any and all rights derived under this lease by the mineral lessee, its agents, successors or assigns, shall not interfere with nor hinder the reasonable surface use by the Department of Natural Resources, its Offices or Commissions, as herein above reserved.

Applicant: CYPRESS ENERGY PARTNERS, LLC

Bidder	Cash Payment	Price/ Acre	Rental	Oil	Gas	Other

Legend

 23040006

 Blocks

 Counties



TRACT 45639 - Portion of Block 38, Breton Sound Area, Plaquemines Parish, Louisiana

The beds and bottoms of all water bodies belonging to the State of Louisiana located in Block 38, Breton Sound Area, together with any present lands formed by accretion to the shoreline or islands formed therein, located in Plaquemines Parish, Louisiana, owned by and not presently under mineral lease as of April 12, 2023, from the State of Louisiana, the geographical area of which is more fully described as follows: Beginning at a point having Coordinates of X = 2,709,100.00 and Y = 307,580.00 being the same as the common corner of Block 37, Block 38, Block 43, and Block 44, Breton Sound Area; thence North 7,975.59 feet along the Western boundary of Block 38, Breton Sound Area, to a point having Coordinates X = 2,709,100.00 and Y = 315,555.59, said point being on the Louisiana Coastline, as decreed by the Supreme Court of the United States, as determined by a Special Master appointed therein, in litigation styled *United States v. State of Louisiana et al No. 9 Original*, in 1975; thence along said Coastline the following courses: Northeasterly on a straight line to a point having Coordinates of X = 2,710,380 and Y = 315,995; Northeasterly on a straight line to a point having Coordinates of X = 2,711,772 and Y = 316,107; Northeasterly on a straight line to a point having Coordinates of X = 2,713,324 and Y = 316,801; Northeasterly on a straight line to a point having Coordinates of X = 2,714,633 and Y = 317,731; Northeasterly on a straight line to a point having Coordinates of X = 2,715,236 and Y = 318,391; Northeasterly on a straight line to a point having Coordinates of X = 2,716,514.90 and Y = 320,037.15; thence South 12,457.15 feet to a point having Coordinates of X = 2,716,514.90 and Y = 307,580.00; thence West 7,414.90 feet along the Southern boundary of Block 38, to the Point of Beginning, containing approximately **1,605.42 acres**, all as more particularly outlined on a plat on file in the Office of Mineral Resources, Department of Natural Resources. All bearings, distances and coordinates are based on Louisiana Coordinate System of 1927, (North or South Zone).

NOTE: The above description of the Tract nominated for lease has been provided and corrected, where required, exclusively by the nomination party. Any mineral lease selected from this Tract and awarded by the Louisiana State Mineral and Energy Board shall be without warranty of any kind, either express, implied, or statutory, including, but not limited to, the implied warranties of merchantability and fitness for a particular purpose. Should the mineral lease awarded by the Louisiana State Mineral and Energy Board be subsequently modified, cancelled or abrogated due to the existence of conflicting leases, operating agreements, private claims or other future obligations or conditions which may affect all or any portion of the leased Tract, it shall not relieve the Lessee of the obligation to pay any bonus due thereon to the Louisiana State Mineral and Energy Board, nor shall the Louisiana State Mineral and Energy Board be obligated to refund any consideration paid by the Lessor prior to such modification, cancellation, or abrogation, including, but not limited to, bonuses, rentals and royalties.

NOTE: The State of Louisiana does hereby reserve, and this lease shall be subject to, the imprescriptible right of surface use in the nature of a servitude in favor of the Department of Natural Resources, including its Offices and Commissions, for the sole purpose of implementing, constructing, servicing and maintaining approved coastal zone management and/or restoration projects. Utilization of any and all rights derived under this lease by the mineral lessee, its agents, successors or assigns, shall not interfere with nor hinder the reasonable surface use by the Department of Natural Resources, its Offices or Commissions, as herein above reserved.

NOTE: It appears, according to our records, that a portion of this Tract is located within the restrictive safety fairway area as set out by the Corps of Engineers, U.S. Army and/or the restrictive anchorage area as set out by the U.S. Coast Guard.

Applicant: CYPRESS ENERGY PARTNERS, LLC

Bidder	Cash Payment	Price/ Acre	Rental	Oil	Gas	Other

Legend

23040008

Blocks

Counties

