

TRACT 45666 - De Soto Parish, Louisiana

All of the lands now or formerly constituting the beds and bottoms of all water bodies of every nature and description as to which title is vested in the State of Louisiana, together with all islands arising therein and other lands formed by accretion or by reliction, where allowed by law, excepting tax adjudicated lands, and not presently under mineral lease on September 13, 2023, situated in De Soto Parish, Louisiana, and more particularly described as follows: Beginning at a point on the Southernmost Southwestern corner of State Lease No. 21922, as amended, having Coordinates of X = 1,710,500.00 and Y = 477,494.31; thence South 89 degrees 22 minutes 00 seconds East 3,222.93 feet to a point on the Western boundary of State Lease No. 20156, as amended, having Coordinates of X = 1,713,722.73 and Y = 477,458.68; thence South 00 degrees 23 minutes 47 seconds West 93.67 feet to a point being the Southernmost Southwest Corner of State Lease No. 20156, as amended, said point also being the Northwest corner of State Lease No. 21923, having Coordinates of X = 1,713,722.08 and Y = 477,365.00; thence South 00 degrees 23 minutes 47 seconds West 5,186.44 feet along the Western boundary of State Lease No. 21923 to a point being its Southwestern corner having Coordinates of X = 1,713,686.19 and Y = 472,178.68; thence South 00 degrees 23 minutes 47 seconds West 7.56 feet to a point on the boundary of State Lease No. 21780, having Coordinates of X = 1,713,686.14 and Y = 472,171.12; thence North 89 degrees 23 minutes 27 seconds West 3,186.32 feet to a point on the Eastern boundary of State Lease No. 15500, as amended, having Coordinates X = 1,710,500.00 and Y = 472,205.00; thence North 5,289.31 feet along the Eastern boundary of State Lease No. 15500, as amended, to the point of beginning, containing approximately **7 acres**, all as more particularly outlined on a plat on file in the Office of Mineral Resources, Department of Natural Resources. All bearings, distances and coordinates are based on Louisiana Coordinate System of 1927, (North or South Zone), where applicable.

NOTE: The above description of the Tract nominated for lease has been provided and corrected, where required, exclusively by the nomination party. Any mineral lease selected from this Tract and awarded by the Louisiana State Mineral and Energy Board shall be without warranty of any kind, either express, implied, or statutory, including, but not limited to, the implied warranties of merchantability and fitness for a particular purpose. Should the mineral lease awarded by the Louisiana State Mineral and Energy Board be subsequently modified, cancelled or abrogated due to the existence of conflicting leases, operating agreements, private claims or other future obligations or conditions which may affect all or any portion of the leased Tract, it shall not relieve the Lessee of the obligation to pay any bonus due thereon to the Louisiana State Mineral and Energy Board, nor shall the Louisiana State Mineral and Energy Board be obligated to refund any consideration paid by the Lessor prior to such modification, cancellation, or abrogation, including, but not limited to, bonuses, rentals and royalties.

Applicant: CYPRESS ENERGY PARTNERS, LLC

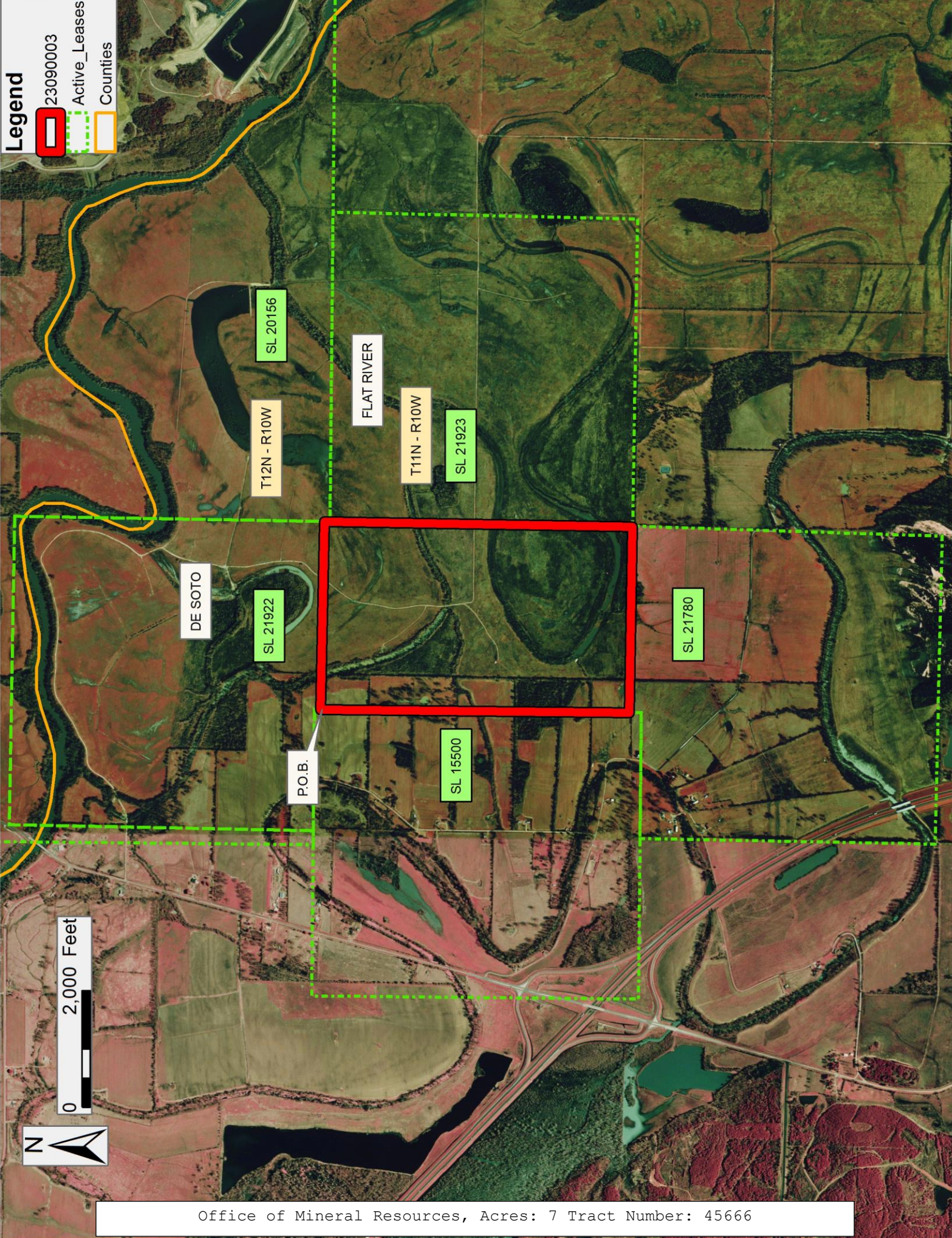
Bidder	Cash Payment	Price/ Acre	Rental	Oil	Gas	Other

Legend

23090003

Active_Leases

Counties



0 2,000 Feet



TRACT 45667 - Red River Parish, Louisiana

All of the lands now or formerly constituting the beds and bottoms of all water bodies of every nature and description as to which title is vested in the State of Louisiana, together with all islands arising therein and other lands formed by accretion or by reliction, where allowed by law, excepting tax adjudicated lands, and not presently under mineral lease on September 13, 2023, situated in Red River Parish, Louisiana, and more particularly described as follows: Beginning at a point having Coordinates of X = 1,745,353.58 and Y = 470,679.75; thence South 89 degrees 09 minutes 16 seconds East approximately 3,768 feet to a point on the West boundary of State Lease No. 9600; thence along the boundaries of said State Lease No. 9600 the following courses: Southerly to its Southwest corner, Easterly to its Southeast corner and Northerly to point South 89 degrees 28 minutes 26 seconds West approximately 116 feet from a point having Coordinates of X = 1,754,633.00 and Y = 470,669.00; thence North 89 degrees 28 minutes 26 seconds East approximately 116 feet to a point having Coordinates of X = 1,754,633.00 and Y = 470,669.00; thence South 00 degrees 12 minutes 45 seconds East 5,368.59 feet to Northeast corner of State Lease No. 21954 having Coordinates of X = 1,754,652.91 and Y = 465,300.45; thence along the boundaries of said State Lease No. 21954 the following courses: North 89 degrees 36 minutes 21 seconds West 4,085.02 feet to a point having Coordinates of X = 1,750,567.99 and Y = 465,328.55 and South 00 degrees 08 minutes 24 seconds West 4,113.11 feet to a point having Coordinates of X = 1,750,557.94 and Y = 461,215.44; thence North 89 degrees 29 minutes 00 seconds West 5,246.47 feet to a point having Coordinates of X = 1,745,311.68 and Y = 461,262.75; thence North 00 degrees 15 minutes 18 seconds East 9,417.09 feet to the point of beginning, **LESS AND EXCEPT** and lands owned by Red River School Board situated in Section 16, Township 11 North, Range 9 West, Red River Parish, Louisiana, containing approximately **189 acres**, all as more particularly outlined on a plat on file in the Office of Mineral Resources, Department of Natural Resources. All bearings, distances and coordinates are based on Louisiana Coordinate System of 1927, (North or South Zone), where applicable.

NOTE: The above description of the Tract nominated for lease has been provided and corrected, where required, exclusively by the nomination party. Any mineral lease selected from this Tract and awarded by the Louisiana State Mineral and Energy Board shall be without warranty of any kind, either express, implied, or statutory, including, but not limited to, the implied warranties of merchantability and fitness for a particular purpose. Should the mineral lease awarded by the Louisiana State Mineral and Energy Board be subsequently modified, cancelled or abrogated due to the existence of conflicting leases, operating agreements, private claims or other future obligations or conditions which may affect all or any portion of the leased Tract, it shall not relieve the Lessee of the obligation to pay any bonus due thereon to the Louisiana State Mineral and Energy Board, nor shall the Louisiana State Mineral and Energy Board be obligated to refund any consideration paid by the Lessor prior to such modification, cancellation, or abrogation, including, but not limited to, bonuses, rentals and royalties.

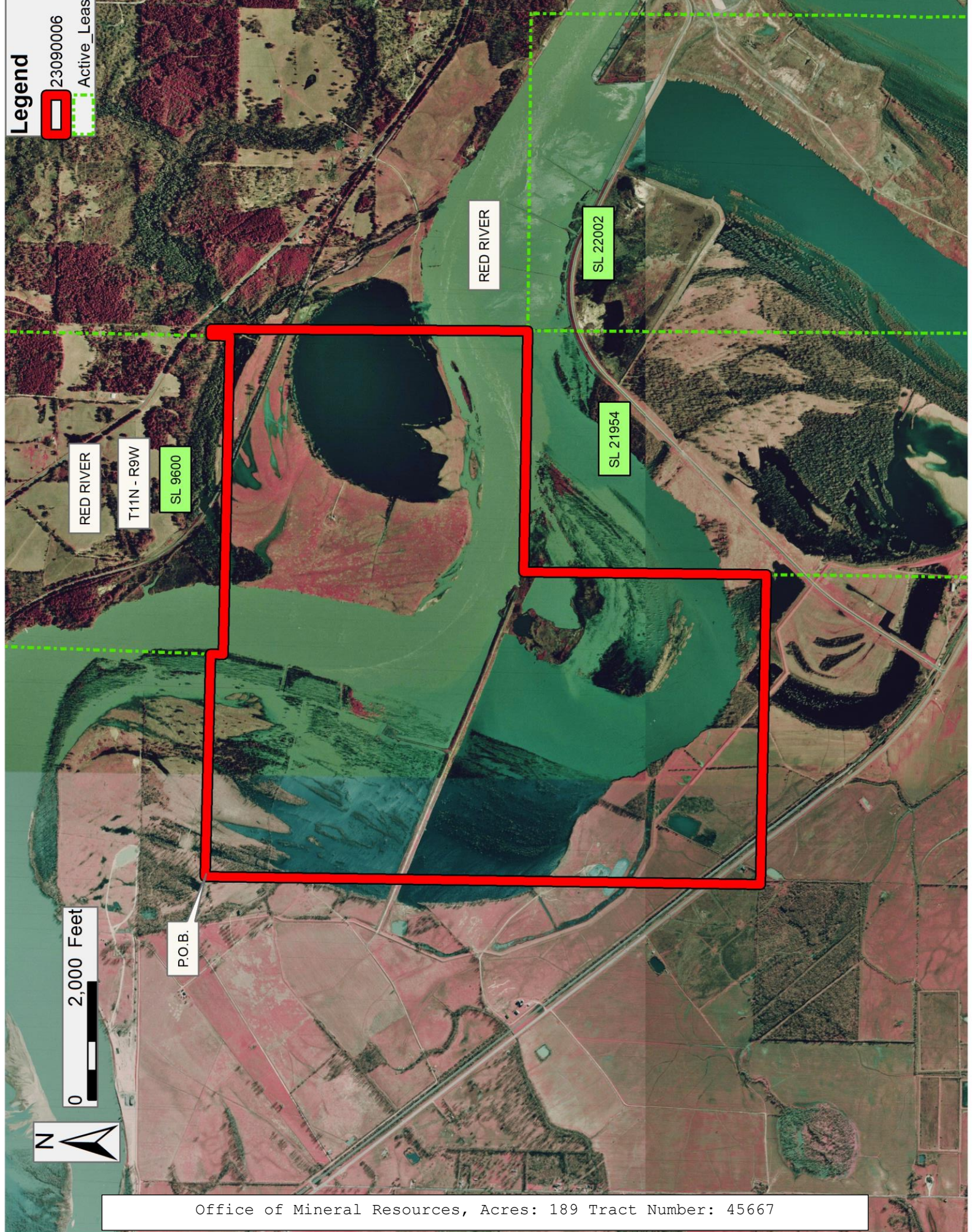
Applicant: SUN RIVER RESOURCES

Bidder	Cash Payment	Price/ Acre	Rental	Oil	Gas	Other

Legend

 23090006

 Active Leases



TRACT 45668 - Plaquemines Parish, Louisiana

All of the lands now or formerly constituting the beds and bottoms of all water bodies of every nature and description as to which title is vested in the State of Louisiana, together with all islands arising therein and other lands formed by accretion or by reliction, where allowed by law, excepting tax adjudicated lands, and not presently under mineral lease on September 13, 2023, situated in Plaquemines Parish, Louisiana, and more particularly described as follows: Beginning at a point having Coordinates of X = 2,641,624.66 and Y = 198,840.71; thence North 88 degrees 24 minutes 31 seconds East 7,901.24 feet to a point having Coordinates of X = 2,649,522.86 and Y = 199,060.13; thence South 01 degrees 29 minutes 57 seconds East 9,632.16 feet to a point having Coordinates of X = 2,649,774.85 and Y = 189,431.26; thence South 88 degrees 29 minutes 50 seconds West 7,862.91 feet to a point having Coordinates of X = 2,641,914.65 and Y = 189,225.05; thence North 01 degrees 31 minutes 52 seconds West 2,283.03 feet to a point having Coordinates of X = 2,641,853.65 and Y = 191,507.27; thence North 01 degrees 47 minutes 19 seconds West 7,337.01 feet to the point of beginning, **LESS AND EXCEPT** any portion of Oil, Gas and Mineral Lease dated June 4, 1946 granted by Tambour Corporation, et al to L.G. Welsh, recorded in Book 125, Page 296, Oil, Gas and Mineral Lease dated June 4, 1946 granted by Walter F. Marous, et al to L.G. Welsh, recorded in Book 125, Page 349, Oil, Gas and Mineral Lease dated June 4, 1952 granted by Rudolph J. Schulze, Jr., et al to Union Producing Company, recorded in Book 163, Page 526, Oil, Gas and Mineral Lease dated June 4, 1952 granted by Mrs. Katherine Richardson Upton to Union Producing Company, recorded in Book 165, Page 285, all of the Conveyance Records of the Plaquemines Parish Clerk of Court, being held by production, which may lie within the above described tract, containing approximately **1,740.96 acres**, all as more particularly outlined on a plat on file in the Office of Mineral Resources, Department of Natural Resources. All bearings, distances and coordinates are based on Louisiana Coordinate System of 1927, (North or South Zone), where applicable.

NOTE: The above description of the Tract nominated for lease has been provided and corrected, where required, exclusively by the nomination party. Any mineral lease selected from this Tract and awarded by the Louisiana State Mineral and Energy Board shall be without warranty of any kind, either express, implied, or statutory, including, but not limited to, the implied warranties of merchantability and fitness for a particular purpose. Should the mineral lease awarded by the Louisiana State Mineral and Energy Board be subsequently modified, cancelled or abrogated due to the existence of conflicting leases, operating agreements, private claims or other future obligations or conditions which may affect all or any portion of the leased Tract, it shall not relieve the Lessee of the obligation to pay any bonus due thereon to the Louisiana State Mineral and Energy Board, nor shall the Louisiana State Mineral and Energy Board be obligated to refund any consideration paid by the Lessor prior to such modification, cancellation, or abrogation, including, but not limited to, bonuses, rentals and royalties.

NOTE: The State of Louisiana does hereby reserve, and this lease shall be subject to, the imprescriptible right of surface use in the nature of a servitude in favor of the Department of Natural Resources, including its Offices and Commissions, for the sole purpose of implementing, constructing, servicing and maintaining approved coastal zone management and/or restoration projects. Utilization of any and all rights derived under this lease by the mineral lessee, its agents, successors or assigns, shall not interfere with nor hinder the reasonable surface use by the Department of Natural Resources, its Offices or Commissions, as herein above reserved.

Applicant: MARK A. O'NEAL & ASSOCIATES, INC.

Bidder	Cash Payment	Price/ Acre	Rental	Oil	Gas	Other

Legend



23090010

PLAQUEMINES

T22S - R31E

GULF OF MEXICO

P.O.B.

0 2,000 Feet



Office of Mineral Resources, Acres: 1740.96 Tract Number: 45668

TRACT 45669 - Plaquemines Parish, Louisiana

All of the lands now or formerly constituting the beds and bottoms of all water bodies of every nature and description as to which title is vested in the State of Louisiana, together with all islands arising therein and other lands formed by accretion or by reliction, where allowed by law, excepting tax adjudicated lands, and not presently under mineral lease on September 13, 2023, situated in Plaquemines Parish, Louisiana, and more particularly described as follows: Beginning at a point having Coordinates of X = 2,628,611.03 and Y = 198,515.97; thence North 88 degrees 34 minutes 14 seconds East 13,017.68 feet to a point having Coordinates of X = 2,641,624.66 and Y = 198,840.71; thence South 01 degrees 47 minutes 19 seconds East 7,337.01 feet to a point having Coordinates of X = 2,641,853.65 and Y = 191,507.27; thence South 88 degrees 35 minutes 02 seconds West 13,061.33 feet to a point having Coordinates of X = 2,628,796.31 and Y = 191,184.50; thence North 01 degrees 26 minutes 52 seconds West 7,333.81 feet to the point of beginning, **LESS AND EXCEPT** any portion of Oil, Gas and Mineral Lease dated June 4, 1946 granted by Tambour Corporation, et al to L.G. Welsh, recorded in Book 125, Page 296, Oil, Gas and Mineral Lease dated June 4, 1946 granted by Walter F. Marous, et al to L.G. Welsh, recorded in Book 125, Page 349, Oil, Gas and Mineral Lease dated June 4, 1952 granted by Rudolph J. Schulze, Jr., et al to Union Producing Company, recorded in Book 163, Page 526, Oil, Gas and Mineral Lease dated June 4, 1952 granted by Mrs. Katherine Richardson Upton to Union Producing Company, recorded in Book 165, Page 285, all of the Conveyance Records of the Plaquemines Parish Clerk of Court, being held by production, which may lie within the above described tract, **AND LESS AND EXCEPT** any right, title, and interest in lands owned by and not under lease from the State of Louisiana, on behalf of the Plaquemines Parish School Board, situated in Section 16, Township 22 South, Range 31 East, Plaquemines Parish, Louisiana, contained within the above described tract, containing approximately **2,038 acres**, all as more particularly outlined on a plat on file in the Office of Mineral Resources, Department of Natural Resources. All bearings, distances and coordinates are based on Louisiana Coordinate System of 1927, (North or South Zone), where applicable.

NOTE: The above description of the Tract nominated for lease has been provided and corrected, where required, exclusively by the nomination party. Any mineral lease selected from this Tract and awarded by the Louisiana State Mineral and Energy Board shall be without warranty of any kind, either express, implied, or statutory, including, but not limited to, the implied warranties of merchantability and fitness for a particular purpose. Should the mineral lease awarded by the Louisiana State Mineral and Energy Board be subsequently modified, cancelled or abrogated due to the existence of conflicting leases, operating agreements, private claims or other future obligations or conditions which may affect all or any portion of the leased Tract, it shall not relieve the Lessee of the obligation to pay any bonus due thereon to the Louisiana State Mineral and Energy Board, nor shall the Louisiana State Mineral and Energy Board be obligated to refund any consideration paid by the Lessor prior to such modification, cancellation, or abrogation, including, but not limited to, bonuses, rentals and royalties.

NOTE: The State of Louisiana does hereby reserve, and this lease shall be subject to, the imprescriptible right of surface use in the nature of a servitude in favor of the Department of Natural Resources, including its Offices and Commissions, for the sole purpose of implementing, constructing, servicing and maintaining approved coastal zone management and/or restoration projects. Utilization of any and all rights derived under this lease by the mineral lessee, its agents, successors or assigns, shall not interfere with nor hinder the reasonable surface use by the Department of Natural Resources, its Offices or Commissions, as herein above reserved.

Applicant: MARK A. O'NEAL & ASSOCIATES, INC.

Bidder	Cash Payment	Price/ Acre	Rental	Oil	Gas	Other



PLAQUEMINES

GRAND PASS

GULF OF MEXICO

T22S - R31E

CADDO

2,000 Feet

0



TRACT 45670 - Plaquemines Parish, Louisiana

All of the lands now or formerly constituting the beds and bottoms of all water bodies of every nature and description as to which title is vested in the State of Louisiana, together with all islands arising therein and other lands formed by accretion or by reliction, where allowed by law, excepting tax adjudicated lands, and not presently under mineral lease on September 13, 2023, situated in Plaquemines Parish, Louisiana, and more particularly described as follows: Beginning at a point having Coordinates of X = 2,628,611.03 and Y = 198,515.97; thence South 01 degrees 26 minutes 52 seconds East 7,333.81 feet to a point having Coordinates of X = 2,628,796.31 and Y = 191,184.50; thence Southerly approximately 5,012 feet to a point of intersection with the Southernmost Northeast corner of State Lease No. 2203, as amended; thence along the boundary of said State Lease No. 2203, as amended, the following: Westerly approximately 2,778 feet; Northerly approximately 2,640 feet; Westerly approximately 2,640 feet; Northerly approximately 2,640 feet; Westerly approximately 2,640 feet; Northerly approximately 2,640 feet and Westerly approximately 5,248 feet along the North line of said State Lease No. 2203, as amended, to a point on its North boundary also being the Southeast corner of Operating Agreement AO 0021; thence Northerly approximately 4,492 feet along the East boundary of said Operating Agreement AO 0021 to a point; thence Easterly approximately 13,356 feet to the point of beginning, **LESS AND EXCEPT** that portion, if any, of State Lease No. 2203, as amended, and Operating Agreement AO 0021 which may lie within the above described tract, containing approximately **2,241 acres**, all as more particularly outlined on a plat on file in the Office of Mineral Resources, Department of Natural Resources. All bearings, distances and coordinates are based on Louisiana Coordinate System of 1927, (North or South Zone), where applicable.

NOTE: The above description of the Tract nominated for lease has been provided and corrected, where required, exclusively by the nomination party. Any mineral lease selected from this Tract and awarded by the Louisiana State Mineral and Energy Board shall be without warranty of any kind, either express, implied, or statutory, including, but not limited to, the implied warranties of merchantability and fitness for a particular purpose. Should the mineral lease awarded by the Louisiana State Mineral and Energy Board be subsequently modified, cancelled or abrogated due to the existence of conflicting leases, operating agreements, private claims or other future obligations or conditions which may affect all or any portion of the leased Tract, it shall not relieve the Lessee of the obligation to pay any bonus due thereon to the Louisiana State Mineral and Energy Board, nor shall the Louisiana State Mineral and Energy Board be obligated to refund any consideration paid by the Lessor prior to such modification, cancellation, or abrogation, including, but not limited to, bonuses, rentals and royalties.

NOTE: The State of Louisiana does hereby reserve, and this lease shall be subject to, the imprescriptible right of surface use in the nature of a servitude in favor of the Department of Natural Resources, including its Offices and Commissions, for the sole purpose of implementing, constructing,

servicing and maintaining approved coastal zone management and/or restoration projects. Utilization of any and all rights derived under this lease by the mineral lessee, its agents, successors or assigns, shall not interfere with nor hinder the reasonable surface use by the Department of Natural Resources, its Offices or Commissions, as herein above reserved.

Applicant: MARK A. O'NEAL & ASSOCIATES, INC.

Bidder	Cash Payment	Price/ Acre	Rental	Oil	Gas	Other

Legend



23090007

Active_Leases



0 2,500 Feet

PLAQUEMINES

T22S - R30E

T22S - R31E

P.O.B.

A0021

GULF OF MEXICO

SL 2203

TRACT 45671 - Plaquemines Parish, Louisiana

All of the lands now or formerly constituting the beds and bottoms of all water bodies of every nature and description as to which title is vested in the State of Louisiana, together with all islands arising therein and other lands formed by accretion or by reliction, where allowed by law, excepting tax adjudicated lands, and not presently under mineral lease on September 13, 2023, situated in Plaquemines Parish, Louisiana, and more particularly described as follows: Beginning at a point having Coordinates of X = 2,628,796.31 and Y = 191,184.50; thence North 88 degrees 35 minutes 02 seconds East 13,061.33 feet to a point having Coordinates of X = 2,641,853.65 and Y = 191,507.27; thence South 01 degrees 31 minutes 52 seconds East 2,283.04 feet to a point having Coordinates of X = 2,641,914.65 and Y = 189,225.05; thence South 01 degrees 44 minutes 02 seconds East approximately 5,584 feet to a point on the North boundary of State Lease No. 451; thence Westerly approximately 13,051 feet along the North line of said State Lease No. 451 to a point of intersection with the Southeast corner of State Lease No. 2203, as amended; thence Northerly approximately 2,752 feet along the East boundary of said State Lease No. 2203, as amended, to a point being its Southernmost Northeastern corner; thence Northerly approximately 5,012 feet to the point of beginning, **LESS AND EXCEPT** that portion, if any, of State Lease No. 451 and State Lease No. 2203, as amended, and any portion of Oil, Gas and Mineral Lease dated June 4, 1946 granted by Tambour Corporation, et al to L.G. Welsh, recorded in Book 125, Page 296, Oil, Gas and Mineral Lease dated June 4, 1946 granted by Walter F. Marous, et al to L.G. Welsh, recorded in Book 125, Page 349, Oil, Gas and Mineral Lease dated June 4, 1952 granted by Rudolph J. Schulze, Jr., et al to Union Producing Company, recorded in Book 163, Page 526, Oil, Gas and Mineral Lease dated June 4, 1952 granted by Mrs. Katherine Richardson Upton to Union Producing Company, recorded in Book 165, Page 285, all of the Conveyance Records of the Plaquemines Parish Clerk of Court, being held by production, which may lie within the above described tract, **AND LESS AND EXCEPT** any right, title, and interest in lands owned by and not under lease from the State of Louisiana, on behalf of the Plaquemines Parish School Board, situated in Section 16, Township 22 South, Range 31 East, Plaquemines Parish, Louisiana, contained within the above described tract, containing approximately **2,314 acres**, all as more particularly outlined on a plat on file in the Office of Mineral Resources, Department of Natural Resources. All bearings, distances and coordinates are based on Louisiana Coordinate System of 1927, (North or South Zone), where applicable.

NOTE: The above description of the Tract nominated for lease has been provided and corrected, where required, exclusively by the nomination party. Any mineral lease selected from this Tract and awarded by the Louisiana State Mineral and Energy Board shall be without warranty of any kind, either express, implied, or statutory, including, but not limited to, the implied warranties of merchantability and fitness for a particular purpose. Should the mineral lease awarded by the Louisiana State Mineral and Energy Board be subsequently modified, cancelled or abrogated due to the existence of conflicting leases, operating agreements, private claims or other future obligations or conditions which may affect all or any portion of the leased

Tract, it shall not relieve the Lessee of the obligation to pay any bonus due thereon to the Louisiana State Mineral and Energy Board, nor shall the Louisiana State Mineral and Energy Board be obligated to refund any consideration paid by the Lessor prior to such modification, cancellation, or abrogation, including, but not limited to, bonuses, rentals and royalties.

Applicant: MARK A. O'NEAL & ASSOCIATES, INC.

Bidder	Cash Payment	Price/ Acre	Rental	Oil	Gas	Other

Legend



23090009

Active_Leases



0 2,000 Feet

PLAQUEMINES

T22S - R31E

P.O.B.

SL 2203

GULF OF MEXICO

GRAND PASS

SL 451

TRACT 45672 - Plaquemines Parish, Louisiana

All of the lands now or formerly constituting the beds and bottoms of all water bodies of every nature and description as to which title is vested in the State of Louisiana, together with all islands arising therein and other lands formed by accretion or by reliction, where allowed by law, excepting tax adjudicated lands, and not presently under mineral lease on September 13, 2023, situated in Plaquemines Parish, Louisiana, and more particularly described as follows: Beginning at a point having Coordinates of X = 2,641,914.65 and Y = 189,225.05; thence North 88 degrees 29 minutes 50 seconds East 7,862.91 feet to a point having Coordinates of X = 2,649,774.85 and Y = 189,431.26; thence Southerly approximately 10,564 feet to the Northeast corner of Operating Agreement AO 0304; thence Westerly approximately 2,566 feet along the North boundary of said Operating Agreement No. 0304 to its Northwest corner, also being the Northeast corner of the Eastern portion of Operating Agreement 0006; thence Westerly approximately 2,598 feet along the North boundary of said Operating Agreement No. 0006 to its Northwest corner, also being the Northeast corner of the Western portion of Operating Agreement No. 0005; thence Westerly approximately 1,795 feet along the North boundary of said Operating Agreement No. 0005 to its Northwest corner, also being a point on the Eastern Boundary of State Lease No. 451; thence Northerly approximately 4,933 feet along the Eastern boundary of said State Lease No. 451 to its Northeast corner; thence Westerly approximately 910 feet along the Northern boundary of State Lease No. 451; thence Northerly approximately 5,584 feet to the point of beginning, **LESS AND EXCEPT** that portion, if any, of State Lease No. 451, Operating Agreement AO 005, Operating Agreement AO 006 and Operating Agreement AO 0304, **AND LESS AND EXCEPT** any portion of Oil, Gas and Mineral Lease dated June 4, 1946 granted by Tambour Corporation, et al to L.G. Welsh, recorded in Book 125, Page 296, Oil, Gas and Mineral Lease dated June 4, 1946 granted by Walter F. Marous, et al to L.G. Welsh, recorded in Book 125, Page 349, Oil, Gas and Mineral Lease dated June 4, 1952 granted by Rudolph J. Schulze, Jr., et al to Union Producing Company, recorded in Book 163, Page 526, Oil, Gas and Mineral Lease dated June 4, 1952 granted by Mrs. Katherine Richardson Upton to Union Producing Company, recorded in Book 165, Page 285, all of the Conveyance Records of the Plaquemines Parish Clerk of Court, being held by production, which may lie within the above described tract, containing approximately **1,800 acres**, all as more particularly outlined on a plat on file in the Office of Mineral Resources, Department of Natural Resources. All bearings, distances and coordinates are based on Louisiana Coordinate System of 1927, (North or South Zone), where applicable.

NOTE: The above description of the Tract nominated for lease has been provided and corrected, where required, exclusively by the nomination party. Any mineral lease selected from this Tract and awarded by the Louisiana State Mineral and Energy Board shall be without warranty of any kind, either express, implied, or statutory, including, but not limited to, the implied warranties of merchantability and fitness for a particular purpose. Should the mineral lease awarded by the Louisiana State Mineral and Energy Board be subsequently modified, cancelled or abrogated due to the existence of

conflicting leases, operating agreements, private claims or other future obligations or conditions which may affect all or any portion of the leased Tract, it shall not relieve the Lessee of the obligation to pay any bonus due thereon to the Louisiana State Mineral and Energy Board, nor shall the Louisiana State Mineral and Energy Board be obligated to refund any consideration paid by the Lessor prior to such modification, cancellation, or abrogation, including, but not limited to, bonuses, rentals and royalties.

NOTE: The State of Louisiana does hereby reserve, and this lease shall be subject to, the imprescriptible right of surface use in the nature of a servitude in favor of the Department of Natural Resources, including its Offices and Commissions, for the sole purpose of implementing, constructing, servicing and maintaining approved coastal zone management and/or restoration projects. Utilization of any and all rights derived under this lease by the mineral lessee, its agents, successors or assigns, shall not interfere with nor hinder the reasonable surface use by the Department of Natural Resources, its Offices or Commissions, as herein above reserved.

Applicant: MARK A. O'NEAL & ASSOCIATES, INC.

Bidder	Cash Payment	Price/ Acre	Rental	Oil	Gas	Other

Legend



23090011

Active_Leases



0 2,000 Feet



PLAQUEMINES

T22S - R31E

GULF OF MEXICO

P.O.B.

SL 451

A0304

A0006

A0005