

TRACT 45681 - Caddo and De Soto Parishes, Louisiana

All of the lands now or formerly constituting the beds and bottoms of all water bodies of every nature and description as to which title is vested in the State of Louisiana, together with all islands arising therein and other lands formed by accretion or by reliction, where allowed by law, excepting tax adjudicated lands, and not presently under mineral lease on November 8, 2023, situated in Caddo and De Soto Parishes, Louisiana, and more particularly described as follows: Beginning at a point having Coordinates of X = 1,609,799.71 and Y = 610,962.63; thence South 89 degrees 35 minutes 13 seconds East 5,384.49 feet to a point having Coordinates of X = 1,615,184.06 and Y = 610,923.83, said point being on the West line of State Lease No. 20356; thence South 01 degrees 24 minutes 55 seconds West 5,431.39 feet along the West line said State Lease No. 20356 to a point having Coordinates of X = 1,615,049.92 and Y = 605,494.10, said point being on the Northern boundary of State Lease No. 21983; thence North 88 degrees 56 minutes 54 seconds West 76.27 feet along the boundary of said State Lease No. 21983 to a point having Coordinates of X = 1,614,973.66 and Y = 605,495.50, said point being on the East boundary of State Lease No. 19459, as amended; thence North 00 degrees 11 minutes 40 seconds East 11.78 feet to a point being the Northeast corner of said State Lease No. 19459, as amended, having Coordinates of X = 1,614,973.70 and Y = 605,507.28; thence North 89 degrees 12 minutes 12 seconds West 5,275.38 feet along the North boundary of said State Lease No. 19459, as amended, to a point having Coordinates of X = 1,609,698.83 and Y = 605,580.63; thence North 01 degrees 04 minutes 26 seconds East 5,382.95 feet to the point of beginning, (This nomination is intended to cover only those State owned water bottoms contained within the boundaries of Section 36, T16N - R14W), containing approximately **214.271 acres**, all as more particularly outlined on a plat on file in the Office of Mineral Resources, Department of Natural Resources. All bearings, distances and coordinates are based on Louisiana Coordinate System of 1927, (North or South Zone), where applicable.

NOTE: The above description of the Tract nominated for lease has been provided and corrected, where required, exclusively by the nomination party. Any mineral lease selected from this Tract and awarded by the Louisiana State Mineral and Energy Board shall be without warranty of any kind, either express, implied, or statutory, including, but not limited to, the implied warranties of merchantability and fitness for a particular purpose. Should the mineral lease awarded by the Louisiana State Mineral and Energy Board be subsequently modified, cancelled or abrogated due to the existence of conflicting leases, operating agreements, private claims or other future obligations or conditions which may affect all or any portion of the leased Tract, it shall not relieve the Lessee of the obligation to pay any bonus due thereon to the Louisiana State Mineral and Energy Board, nor shall the Louisiana State Mineral and Energy Board be obligated to refund any consideration paid by the Lessor prior to such modification, cancellation, or abrogation, including, but not limited to, bonuses, rentals and royalties.

Applicant: PARAMOUNT ENERGY, L.L.C.

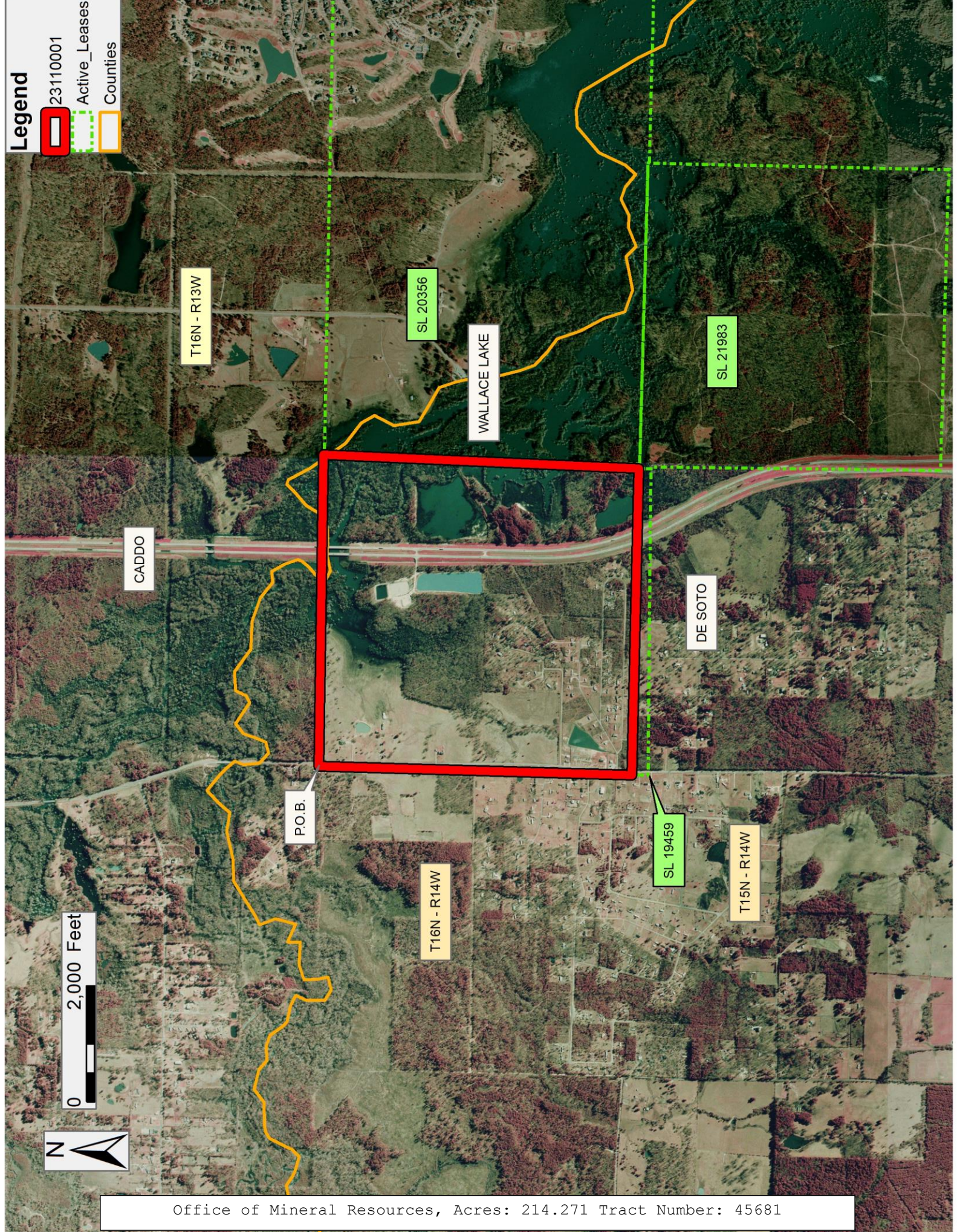
Bidder	Cash Payment	Price/ Acre	Rental	Oil	Gas	Other

Legend

23110001

Active_Leases

Counties



TRACT 45682 - St. Martin Parish, Louisiana

All of the lands now or formerly constituting the beds and bottoms of all water bodies of every nature and description as to which title is vested in the State of Louisiana, together with all islands arising therein and other lands formed by accretion or by reliction, where allowed by law, excepting tax adjudicated lands, and not presently under mineral lease on November 8, 2023, situated in St. Martin Parish, Louisiana, and more particularly described as follows: Beginning at the Southwest corner of State Lease No. 22115, having Coordinates of X = 1,910,107.40 and Y = 580,824.34; thence East 6,439.67 feet along the Southern boundary of said State Lease No. 22115 to its Southeast corner, having Coordinates of X = 1,916,547.07 and Y = 580,824.34; thence South 3,019.11 feet to a point having Coordinates of X = 1,916,547.07 and Y = 577,805.23; thence West 6,439.67 feet to a point having Coordinates of X = 1,910,107.40 and Y = 577,805.23; thence North 3,019.11 feet to the point of beginning, containing approximately **42 acres**, all as more particularly outlined on a plat on file in the Office of Mineral Resources, Department of Natural Resources. All bearings, distances and coordinates are based on Louisiana Coordinate System of 1927, (North or South Zone), where applicable.

NOTE: The above description of the Tract nominated for lease has been provided and corrected, where required, exclusively by the nomination party. Any mineral lease selected from this Tract and awarded by the Louisiana State Mineral and Energy Board shall be without warranty of any kind, either express, implied, or statutory, including, but not limited to, the implied warranties of merchantability and fitness for a particular purpose. Should the mineral lease awarded by the Louisiana State Mineral and Energy Board be subsequently modified, cancelled or abrogated due to the existence of conflicting leases, operating agreements, private claims or other future obligations or conditions which may affect all or any portion of the leased Tract, it shall not relieve the Lessee of the obligation to pay any bonus due thereon to the Louisiana State Mineral and Energy Board, nor shall the Louisiana State Mineral and Energy Board be obligated to refund any consideration paid by the Lessor prior to such modification, cancellation, or abrogation, including, but not limited to, bonuses, rentals and royalties.

NOTE: This acreage is entirely within the boundary of the Atchafalaya Basin Legal Area.

Applicant: THEOPHILUS OIL, GAS & LAND SERVICES, LLC

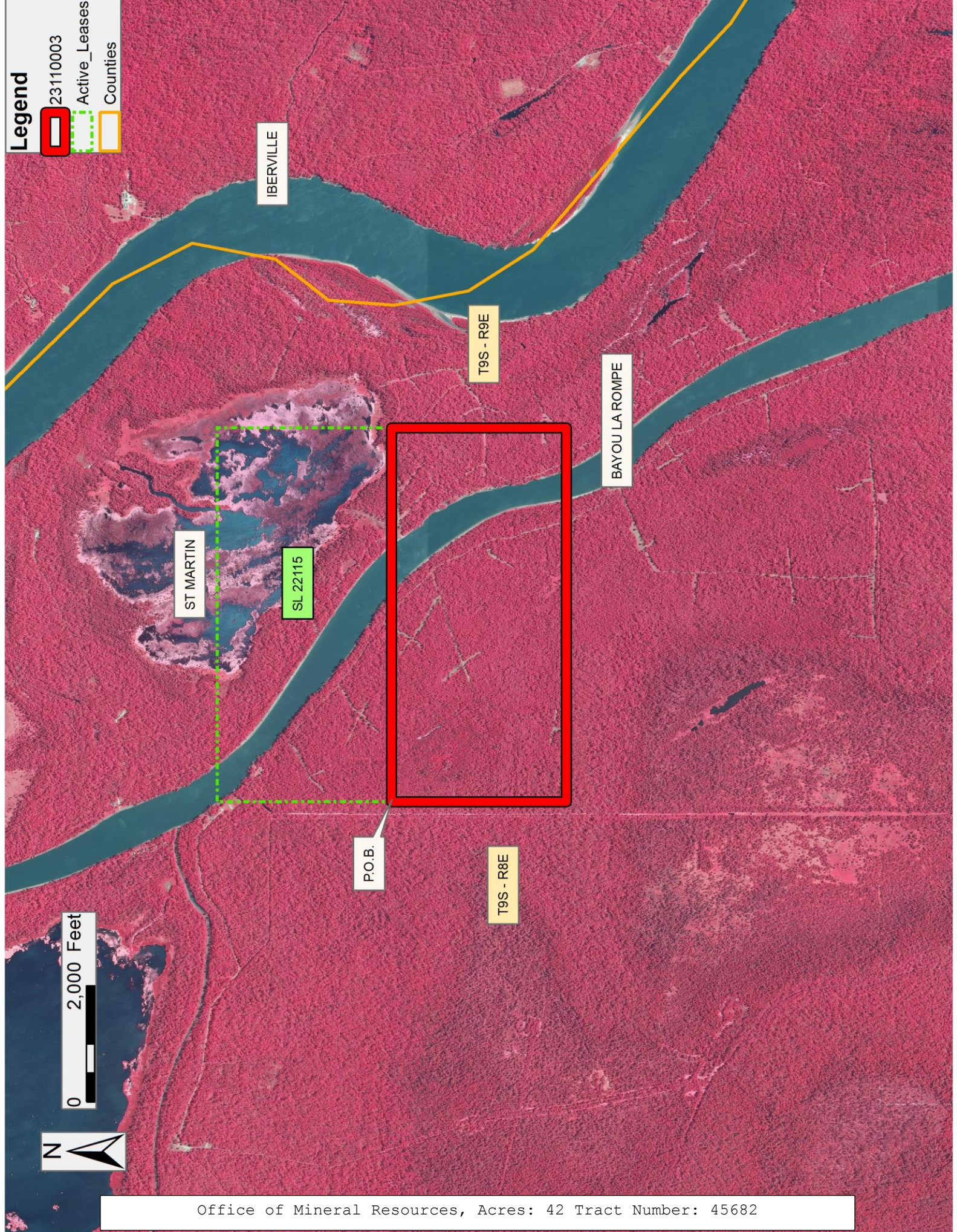
Bidder	Cash Payment	Price/ Acre	Rental	Oil	Gas	Other

Legend

23110003

Active_Leases

Counties



0 2,000 Feet



TRACT 45683 - Iberville and St. Martin Parishes, Louisiana

All of the lands now or formerly constituting the beds and bottoms of all water bodies of every nature and description as to which title is vested in the State of Louisiana, together with all islands arising therein and other lands formed by accretion or by reliction, where allowed by law, excepting tax adjudicated lands, and not presently under mineral lease on November 8, 2023, situated in Iberville and St. Martin Parishes, Louisiana, and more particularly described as follows: Beginning at a point having Coordinates of X = 1,910,107.40 and Y = 577,805.23; thence East 11,545.59 feet to a point having Coordinates of X = 1,921,652.99 and Y = 577,805.23; thence South 5,388.57 feet to a point having Coordinates of X = 1,921,652.99 and Y = 572,416.66; thence West 11,545.59 feet to a point having Coordinates of X = 1,910,107.40 and Y = 572,416.66; thence North 5,388.57 feet to the point of beginning, containing approximately **171 acres**, all as more particularly outlined on a plat on file in the Office of Mineral Resources, Department of Natural Resources. All bearings, distances and coordinates are based on Louisiana Coordinate System of 1927, (North or South Zone), where applicable.

NOTE: The above description of the Tract nominated for lease has been provided and corrected, where required, exclusively by the nomination party. Any mineral lease selected from this Tract and awarded by the Louisiana State Mineral and Energy Board shall be without warranty of any kind, either express, implied, or statutory, including, but not limited to, the implied warranties of merchantability and fitness for a particular purpose. Should the mineral lease awarded by the Louisiana State Mineral and Energy Board be subsequently modified, cancelled or abrogated due to the existence of conflicting leases, operating agreements, private claims or other future obligations or conditions which may affect all or any portion of the leased Tract, it shall not relieve the Lessee of the obligation to pay any bonus due thereon to the Louisiana State Mineral and Energy Board, nor shall the Louisiana State Mineral and Energy Board be obligated to refund any consideration paid by the Lessor prior to such modification, cancellation, or abrogation, including, but not limited to, bonuses, rentals and royalties.

NOTE: This acreage is entirely within the boundary of the Atchafalaya Basin Legal Area.

Applicant: THEOPHILUS OIL, GAS & LAND SERVICES, LLC

Bidder	Cash Payment	Price/ Acre	Rental	Oil	Gas	Other

IBERVILLE

UPPER GRAND RIVER

T9S - R9E

ST MARTIN

BAYOU LA ROMPE

T9S - R8E

P.O.B.

0 2,000 Feet

