

TRACT 45686 - Caddo Parish, Louisiana

All of the lands now or formerly constituting the beds and bottoms of all water bodies of every nature and description as to which title is vested in the State of Louisiana, together with all islands arising therein and other lands formed by accretion or by reliction, where allowed by law, excepting tax adjudicated lands, and not presently under mineral lease on December 13, 2023, situated in Caddo Parish, Louisiana, and more particularly described as follows: All of that portion of Cross Lake lying below the 172 foot contour line, being water bottoms claimed by the State, within the following described property: Beginning at a point having Coordinates of X = 1,600,043.93 and Y = 675,915.26; thence South 01 degrees 01 minutes 56 seconds East 1,464.18 feet to a point having Coordinates of X = 1,600,070.31 and Y = 674,451.32; thence South 00 degrees 39 minutes 36 seconds East 5,244.43 feet to a point having Coordinates of X = 1,600,130.73 and Y = 669,207.24; thence North 89 degrees 32 minutes 24 seconds West 4,354.09 feet to a point on the east boundary of State Lease No. 22091 having Coordinates of X = 1,595,776.78 and Y = 669,242.19; thence Northerly approximately 1,968 feet along the east boundary of said State Lease No. 22091 to its Northeast corner and the Southeast corner of A0275; thence continue Northerly along the east boundary of said A0275 to a point of intersection with a line having a bearing of North 88 degrees 05 minutes 20 seconds West; thence South 88 degrees 05 minutes 20 seconds East approximately 4,253 feet to the point of beginning, containing approximately **519 acres**, all as more particularly outlined on a plat on file in the Office of Mineral Resources, Department of Natural Resources. All bearings, distances and coordinates are based on Louisiana Coordinate System of 1927, (North or South Zone), where applicable.

NOTE: The above description of the Tract nominated for lease has been provided and corrected, where required, exclusively by the nomination party. Any mineral lease selected from this Tract and awarded by the Louisiana State Mineral and Energy Board shall be without warranty of any kind, either express, implied, or statutory, including, but not limited to, the implied warranties of merchantability and fitness for a particular purpose. Should the mineral lease awarded by the Louisiana State Mineral and Energy Board be subsequently modified, cancelled or abrogated due to the existence of conflicting leases, operating agreements, private claims or other future obligations or conditions which may affect all or any portion of the leased Tract, it shall not relieve the Lessee of the obligation to pay any bonus due thereon to the Louisiana State Mineral and Energy Board, nor shall the Louisiana State Mineral and Energy Board be obligated to refund any consideration paid by the Lessor prior to such modification, cancellation, or abrogation, including, but not limited to, bonuses, rentals and royalties.

NOTE: Lessee agrees not to erect any derrick, tank, warehouse or other equipment or structure on the leased premises nor shall lessee interfere in any manner, with lessor's use of the property. Lessee shall have, however, the complete right to drill for, produce, extract and recover the minerals in and beneath said land by drilling or other operations conducted from the

surface of other lands or by the pooling or unitization of the leased premises with other land, lease or leases in the area.

Applicant: CYPRESS ENERGY PARTNERS, LLC

Bidder	Cash Payment	Price/ Acre	Rental	Oil	Gas	Other

Legend

23120006

Active_Leases

0 2,000 Feet



P.O.B.

CADDO

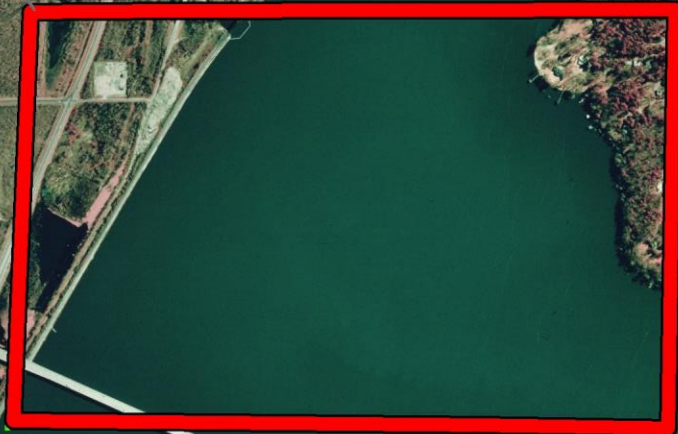
T18N - R14W

T17N - R14W

A0275

CROSS LAKE

SL 22091



TRACT 45687 - Caddo Parish, Louisiana

The mineral rights only on and under all lands now or formerly constituting the beds and bottoms of all water bodies of every nature and description, and under all other lands owned by and not presently under mineral lease as of December 13, 2023, from the State of Louisiana situated in Caddo Parish, Louisiana, and being more fully described as follows: Beginning at a point having Coordinates of X = 1,600,043.93 and Y = 675,915.26; thence South 01 degrees 01 minutes 56 seconds East 1,464.18 feet to a point having Coordinates of X = 1,600,070.31 and Y = 674,451.32; thence South 00 degrees 39 minutes 36 seconds East 5,244.43 feet to a point having Coordinates of X = 1,600,130.73 and Y = 669,207.24; thence North 89 degrees 32 minutes 24 seconds West 4,354.09 feet to a point on the east boundary of State Lease No. 22091 having Coordinates of X = 1,595,776.78 and Y = 669,242.19; thence Northerly approximately 1,968 feet along the east boundary of said State Lease No. 22091 to its Northeast corner and the Southeast corner of A0275; thence continue Northerly along the east boundary of said A0275 to a point of intersection with a line having a bearing of North 88 degrees 05 minutes 20 seconds West; thence South 88 degrees 05 minutes 20 seconds East approximately 4,253 feet to the point of beginning, containing approximately **88 acres**, all as more particularly outlined on a plat on file in the Office of Mineral Resources, Department of Natural Resources. All bearings, distances and coordinates are based on Louisiana Coordinate System of 1927, (North or South Zone), where applicable.

NOTE: The above description of the Tract nominated for lease has been provided and corrected, where required, exclusively by the nomination party. Any mineral lease selected from this Tract and awarded by the Louisiana State Mineral and Energy Board shall be without warranty of any kind, either express, implied, or statutory, including, but not limited to, the implied warranties of merchantability and fitness for a particular purpose. Should the mineral lease awarded by the Louisiana State Mineral and Energy Board be subsequently modified, cancelled or abrogated due to the existence of conflicting leases, operating agreements, private claims or other future obligations or conditions which may affect all or any portion of the leased Tract, it shall not relieve the Lessee of the obligation to pay any bonus due thereon to the Louisiana State Mineral and Energy Board, nor shall the Louisiana State Mineral and Energy Board be obligated to refund any consideration paid by the Lessor prior to such modification, cancellation, or abrogation, including, but not limited to, bonuses, rentals and royalties.

NOTE: Lessee agrees not to erect any derrick, tank, warehouse or other equipment or structure on the leased premises nor shall lessee interfere in any manner, with lessor's use of the property. Lessee shall have, however, the complete right to drill for, produce, extract and recover the minerals in and beneath said land by drilling or other operations conducted from the surface of other lands or by the pooling or unitization of the leased premises with other land, lease or leases in the area.

Applicant: CYPRESS ENERGY PARTNERS, LLC

Bidder	Cash Payment	Price/ Acre	Rental	Oil	Gas	Other

Legend



23120007



Active_Leases



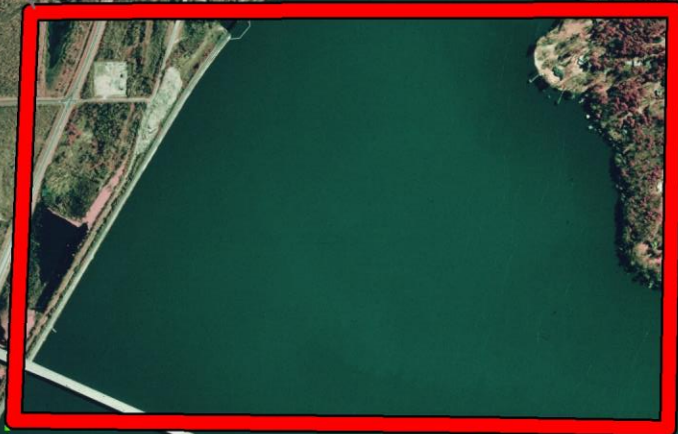
0 2,000 Feet

P.O.B.

CADDO

T18N - R14W

T17N - R14W



A0275

CROSS LAKE

SL 22091

TRACT 45688 - Red River Parish, Louisiana

All of the lands now or formerly constituting the beds and bottoms of all water bodies of every nature and description as to which title is vested in the State of Louisiana, together with all islands arising therein and other lands formed by accretion or by reliction, where allowed by law, excepting tax adjudicated lands, and not presently under mineral lease on December 13, 2023, situated in Red River Parish, Louisiana, and more particularly described as follows: Beginning at the Northwest corner of State Lease No. 20153, also being a point on the Southern boundary of State Lease No. 20038, having Coordinates of X = 1,719,190.00 and Y = 529,555.00; thence South 4,245.00 feet along the Western boundary of said State Lease No. 20153 to its Southwest corner, also being the Northwest corner of State Lease No. 20039, as amended, having Coordinates of X = 1,719,190.00 and Y = 525,310.00; thence South 6,537.50 feet along the Western boundary of said State Lease No. 20039 to its Southwest corner, having Coordinates of X = 1,719,190.00 and Y = 518,772.50; thence South 89 degrees 36 minutes 13 seconds West 187.84 feet to the Northeast corner of State Lease No. 19999, having Coordinates of X = 1,719,002.16 and Y = 518,771.20; thence South 89 degrees 41 minutes 00 seconds West 2,905.85 feet along the North line of said State Lease No. 19999, to a point on the most Eastern boundary of State Lease No. 18503, having Coordinates of X = 1,716,096.35 and Y = 518,755.14; thence North 1,220.00 feet along said Eastern boundary of said State Lease No. 18503 to its Northeast corner, having Coordinates of X = 1,716,096.35 and Y = 519,975.14; thence North 6,967.86 feet to a point having Coordinates of X = 1,716,096.35 and Y = 526,943.00; thence West 3,406.35 feet to a point having Coordinates of X = 1,712,690.00 and Y = 526,943.00; thence Northerly approximately 2,612 feet to a point on said Southern boundary of said State Lease No. 20038; thence Northeasterly and Southeasterly along said Southern boundary of said State Lease No. 20038 to the point of beginning, **LESS AND EXCEPT** all that portion, if any, of State Lease No. 20038 that may lie within the above described tract, containing approximately **41 acres**, all as more particularly outlined on a plat on file in the Office of Mineral Resources, Department of Natural Resources. All bearings, distances and coordinates are based on Louisiana Coordinate System of 1927, (North or South Zone), where applicable.

NOTE: The above description of the Tract nominated for lease has been provided and corrected, where required, exclusively by the nomination party. Any mineral lease selected from this Tract and awarded by the Louisiana State Mineral and Energy Board shall be without warranty of any kind, either express, implied, or statutory, including, but not limited to, the implied warranties of merchantability and fitness for a particular purpose. Should the mineral lease awarded by the Louisiana State Mineral and Energy Board be subsequently modified, cancelled or abrogated due to the existence of conflicting leases, operating agreements, private claims or other future obligations or conditions which may affect all or any portion of the leased Tract, it shall not relieve the Lessee of the obligation to pay any bonus due thereon to the Louisiana State Mineral and Energy Board, nor shall the Louisiana State Mineral and Energy Board be obligated to refund any

consideration paid by the Lessor prior to such modification, cancellation, or abrogation, including, but not limited to, bonuses, rentals and royalties.

Applicant: THEOPHILUS OIL, GAS & LAND SERVICES, LLC

Bidder	Cash Payment	Price/ Acre	Rental	Oil	Gas	Other

Legend



23120008

Active Leases

0 2,000 Feet



RED RIVER

WILLOW BAY BAYOU

P.O.B.

SL 20038

SL 20153

SL 20039

COUSHATTA BAYOU

SL 19999

T13N - R10W

SL 18503

TRACT 45689 - Red River Parish, Louisiana

All of the lands now or formerly constituting the beds and bottoms of all water bodies of every nature and description as to which title is vested in the State of Louisiana, together with all islands arising therein and other lands formed by accretion or by reliction, where allowed by law, excepting tax adjudicated lands, and not presently under mineral lease on December 13, 2023, situated in Red River Parish, Louisiana, and more particularly described as follows: Beginning at the Southeast corner of State Lease No. 22010, also being a point on the Western boundary of State Lease No. 19836, as amended, having Coordinates of X = 1,745,402.05 and Y = 513,261.12; thence South 79 degrees 02 minutes 01 seconds East 5.89 feet along the boundary of said State Lease No. 19836 to a point having Coordinates of X = 1,745,407.83 and Y = 513,260.00; thence South 01 degrees 39 minutes 10 seconds West 2,639.98 feet along said Western boundary of said State Lease No. 19836 to a point having Coordinates of X = 1,745,331.69 and Y = 510,621.12; thence West 2,569.64.00 feet to a point having Coordinates of X = 1,742,762.05 and Y = 510,621.12; thence North 2,672.26 feet to a point on the Southern boundary of said State Lease No. 22010, having Coordinates of X = 1,742,762.05 and Y = 513,293.38; thence South 89 degrees 18 minutes 00 seconds East 2,640.20 feet along said Southern boundary of said State Lease No. 22010 to the point of beginning, containing approximately **0.888 acres**, all as more particularly outlined on a plat on file in the Office of Mineral Resources, Department of Natural Resources. All bearings, distances and coordinates are based on Louisiana Coordinate System of 1927, (North or South Zone), where applicable.

NOTE: The above description of the Tract nominated for lease has been provided and corrected, where required, exclusively by the nomination party. Any mineral lease selected from this Tract and awarded by the Louisiana State Mineral and Energy Board shall be without warranty of any kind, either express, implied, or statutory, including, but not limited to, the implied warranties of merchantability and fitness for a particular purpose. Should the mineral lease awarded by the Louisiana State Mineral and Energy Board be subsequently modified, cancelled or abrogated due to the existence of conflicting leases, operating agreements, private claims or other future obligations or conditions which may affect all or any portion of the leased Tract, it shall not relieve the Lessee of the obligation to pay any bonus due thereon to the Louisiana State Mineral and Energy Board, nor shall the Louisiana State Mineral and Energy Board be obligated to refund any consideration paid by the Lessor prior to such modification, cancellation, or abrogation, including, but not limited to, bonuses, rentals and royalties.

Applicant: THEOPHILUS OIL, GAS & LAND SERVICES, LLC

Bidder	Cash Payment	Price/ Acre	Rental	Oil	Gas	Other

Legend



23120009

Active_Leases

0 1,000 Feet



RED RIVER

T13N - R9W

SL 22010

P.O.B.

SL 19836

GRAND BAYOU

TRACT 45690 - Red River Parish, Louisiana

All of the lands now or formerly constituting the beds and bottoms of all water bodies of every nature and description as to which title is vested in the State of Louisiana, together with all islands arising therein and other lands formed by accretion or by reliction, where allowed by law, excepting tax adjudicated lands, and not presently under mineral lease on December 13, 2023, situated in Red River Parish, Louisiana, and more particularly described as follows: Beginning at a point being the Northernmost Southwest corner of State Lease No. 20114, as amended, having Coordinates of X = 1,729,632.76 and Y = 482,698.89; thence South 89 degrees 28 minutes 08 seconds East 9,381.19 feet along the boundary of said State Lease No. 20114, as amended, to a point being its Southeast corner having Coordinates of X = 1,739,013.55 and Y = 482,611.93; thence East 1,154.63 feet to a point having Coordinates of X = 1,740,168.18 and Y = 482,611.93; thence South 5,246.93 feet to a point being the Northeast corner of State Lease No. 22053 having Coordinates of X = 1,740,168.18 and Y = 477,365.00; thence West 10,516.18 feet along the Northern boundary of said State Lease No. 22053 to a point having Coordinates of X = 1,729,652.00 and Y = 477,365.00; thence North 00 degrees 12 minutes 24 seconds West 5,333.92 feet to the point of beginning, containing approximately **174 acres**, all as more particularly outlined on a plat on file in the Office of Mineral Resources, Department of Natural Resources. All bearings, distances and coordinates are based on Louisiana Coordinate System of 1927, (North or South Zone), where applicable.

NOTE: The above description of the Tract nominated for lease has been provided and corrected, where required, exclusively by the nomination party. Any mineral lease selected from this Tract and awarded by the Louisiana State Mineral and Energy Board shall be without warranty of any kind, either express, implied, or statutory, including, but not limited to, the implied warranties of merchantability and fitness for a particular purpose. Should the mineral lease awarded by the Louisiana State Mineral and Energy Board be subsequently modified, cancelled or abrogated due to the existence of conflicting leases, operating agreements, private claims or other future obligations or conditions which may affect all or any portion of the leased Tract, it shall not relieve the Lessee of the obligation to pay any bonus due thereon to the Louisiana State Mineral and Energy Board, nor shall the Louisiana State Mineral and Energy Board be obligated to refund any consideration paid by the Lessor prior to such modification, cancellation, or abrogation, including, but not limited to, bonuses, rentals and royalties.

NOTE: The Office of Mineral Resources will require a minimum bonus of \$2500 per acre and a minimum royalty of 25%.

Applicant: STAFF OFFICE OF MINERAL RESOURCES

Bidder	Cash Payment	Price/ Acre	Rental	Oil	Gas	Other

Legend



23120019

Active_Leases



Counties

0 2,000 Feet



T12N - R9W

T12N - R10W

RED RIVER

RED RIVER

SL 20114

P.O.B.

T11N - R9W

T11N - R10W

SL 22053

BAYOU WINSEY

SL 20702

TRACT 45691 - De Soto and Red River Parishes, Louisiana

All of the lands now or formerly constituting the beds and bottoms of all water bodies of every nature and description as to which title is vested in the State of Louisiana, together with all islands arising therein and other lands formed by accretion or by reliction, where allowed by law, excepting tax adjudicated lands, and not presently under mineral lease on December 13, 2023, situated in De Soto and Red River Parishes, Louisiana, and more particularly described as follows: Beginning at a point on the South boundary of State Lease No. 20156, as amended, having Coordinates of X = 1,719,021.02 and Y = 477,365.00; thence East 5,043.98 feet along a Southern boundary of said State Lease No. 20156, as amended, to a point being its Southeast corner, said point also being the Northwest corner of State Lease No. 20702 having Coordinates of X = 1,724,065.00 and Y = 477,365.00; thence South 5,445.00 feet along the West boundary of said State Lease No. 20702 to a point being its Southwest corner having Coordinates of X = 1,724,065.00 and Y = 471,920.00; thence North 87 degrees 28 minutes 41 seconds West 5,113.40 feet to a point being the Southeast corner of State Lease No. 21923 having Coordinates of X = 1,718,956.55 and Y = 472,145.00; thence North 00 degrees 42 minutes 27 seconds East 5,220.40 feet along the Eastern boundary of said State Lease No. 21923 to the point of beginning, containing approximately **9 acres**, all as more particularly outlined on a plat on file in the Office of Mineral Resources, Department of Natural Resources. All bearings, distances and coordinates are based on Louisiana Coordinate System of 1927, (North or South Zone), where applicable.

NOTE: The above description of the Tract nominated for lease has been provided and corrected, where required, exclusively by the nomination party. Any mineral lease selected from this Tract and awarded by the Louisiana State Mineral and Energy Board shall be without warranty of any kind, either express, implied, or statutory, including, but not limited to, the implied warranties of merchantability and fitness for a particular purpose. Should the mineral lease awarded by the Louisiana State Mineral and Energy Board be subsequently modified, cancelled or abrogated due to the existence of conflicting leases, operating agreements, private claims or other future obligations or conditions which may affect all or any portion of the leased Tract, it shall not relieve the Lessee of the obligation to pay any bonus due thereon to the Louisiana State Mineral and Energy Board, nor shall the Louisiana State Mineral and Energy Board be obligated to refund any consideration paid by the Lessor prior to such modification, cancellation, or abrogation, including, but not limited to, bonuses, rentals and royalties.

NOTE: The Office of Mineral Resources will require a minimum bonus of \$2500 per acre and a minimum royalty of 25%.

Applicant: STAFF OFFICE OF MINERAL RESOURCES

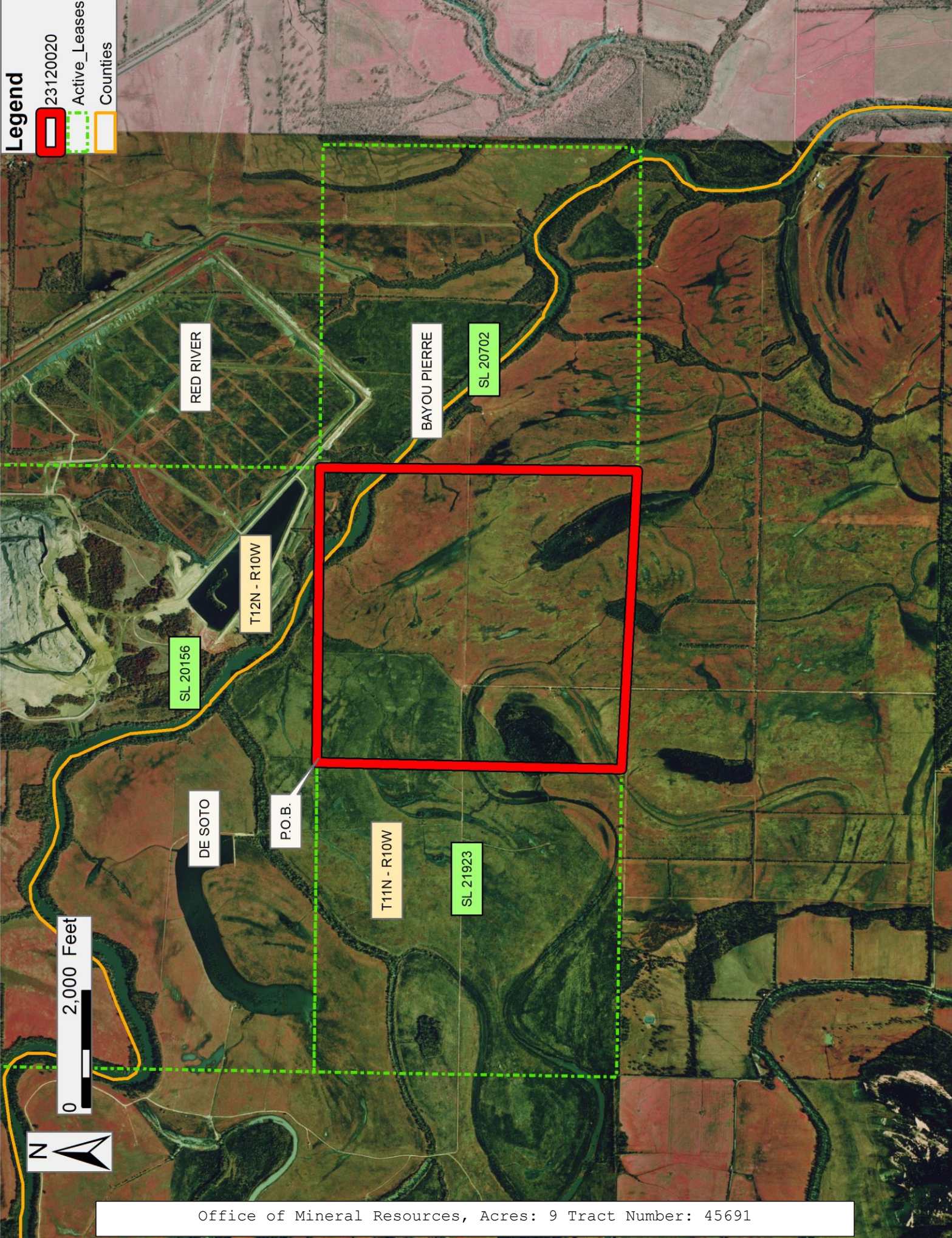
Bidder	Cash Payment	Price/ Acre	Rental	Oil	Gas	Other

Legend

23120020

Active_Leases

Counties



TRACT 45692 - De Soto and Natchitoches Parishes, Louisiana

All of the lands now or formerly constituting the beds and bottoms of all water bodies of every nature and description as to which title is vested in the State of Louisiana, together with all islands arising therein and other lands formed by accretion or by reliction, where allowed by law, excepting tax adjudicated lands, and not presently under mineral lease on December 13, 2023, situated in De Soto and Natchitoches Parishes, Louisiana, and more particularly described as follows: Beginning at a point being the Southeast corner of State Lease No. 21780, also being the Northeast corner of retained area B of State Lease No. 20721, as amended, having Coordinates of X = 1,713,574.37 and Y = 466,872.23; thence South 89 degrees 21 minutes 47 seconds East 10,613.56 feet to a point having Coordinates of X = 1,724,187.27 and Y = 466,754.27; thence South 01 degrees 24 minutes 01 seconds West 5,054.13 feet to the Northernmost Northwest corner of State Lease No. 21981 having Coordinates of X = 1,724,063.77 and Y = 461,701.65; thence along the west boundary of said State Lease No. 21981 the following courses: South 00 degrees 07 minutes 20 seconds East 5,471.09 feet to a point having Coordinates of X = 1,724,075.44 and Y = 456,230.57, North 89 degrees 07 minutes 46 seconds West 5,383.03 feet to a point having Coordinates of X = 1,718,693.03 and Y = 456,312.36 and South 01 degrees 05 minutes 04 seconds East 5,540.80 feet to its Southernmost Southwest corner having Coordinates of X = 1,718,797.89 and Y = 450,772.55; thence North 88 degrees 42 minutes 47 seconds West 10,702.45 feet to the Southeast corner of State Lease No. 21781 having Coordinates of X = 1,708,098.14 and Y = 451,012.92; thence North 01 degrees 11 minutes 30 seconds East 5,343.37 feet along the East boundary of said State Lease No. 21781 to its Northeast corner having Coordinates of X = 1,708,209.27 and Y = 456,355.14; thence North 00 degrees 12 minutes 28 seconds West 5,314.90 feet to the Southeast corner of State Lease No. 20159, also being the Southwest corner of said retained area B of State Lease No. 20721 having Coordinates of X = 1,708,190.00 and Y = 461,670.00; thence along the boundary of said State Lease No. 20721 the following courses: East 5,193.13 feet to a point having Coordinates of X = 1,713,383.13 and Y = 461,670.00, North 00 degrees 19 minutes 35 seconds East 83.16 feet to a point having Coordinates of X = 1,713,383.60 and Y = 461,753.16 and North 02 degrees 08 minutes 03 seconds East 5,122.62 feet to the point of beginning, **LESS AND EXCEPT** any right, title, and interest in lands owned by and not under lease from the State of Louisiana, on behalf of the DeSoto Parish School Board, situated in Section 16, Township 10 North, Range 10 West, DeSoto Parish, Louisiana, contained within the above described tract, containing approximately **39 acres**, all as more particularly outlined on a plat on file in the Office of Mineral Resources, Department of Natural Resources. All bearings, distances and coordinates are based on Louisiana Coordinate System of 1927, (North or South Zone), where applicable.

NOTE: The above description of the Tract nominated for lease has been provided and corrected, where required, exclusively by the nomination party. Any mineral lease selected from this Tract and awarded by the Louisiana State Mineral and Energy Board shall be without warranty of any kind, either express, implied, or statutory, including, but not limited to, the implied

warranties of merchantability and fitness for a particular purpose. Should the mineral lease awarded by the Louisiana State Mineral and Energy Board be subsequently modified, cancelled or abrogated due to the existence of conflicting leases, operating agreements, private claims or other future obligations or conditions which may affect all or any portion of the leased Tract, it shall not relieve the Lessee of the obligation to pay any bonus due thereon to the Louisiana State Mineral and Energy Board, nor shall the Louisiana State Mineral and Energy Board be obligated to refund any consideration paid by the Lessor prior to such modification, cancellation, or abrogation, including, but not limited to, bonuses, rentals and royalties.

NOTE: The Office of Mineral Resources will require a minimum bonus of \$2500 per acre and a minimum royalty of 25%.

Applicant: STAFF OFFICE OF MINERAL RESOURCES

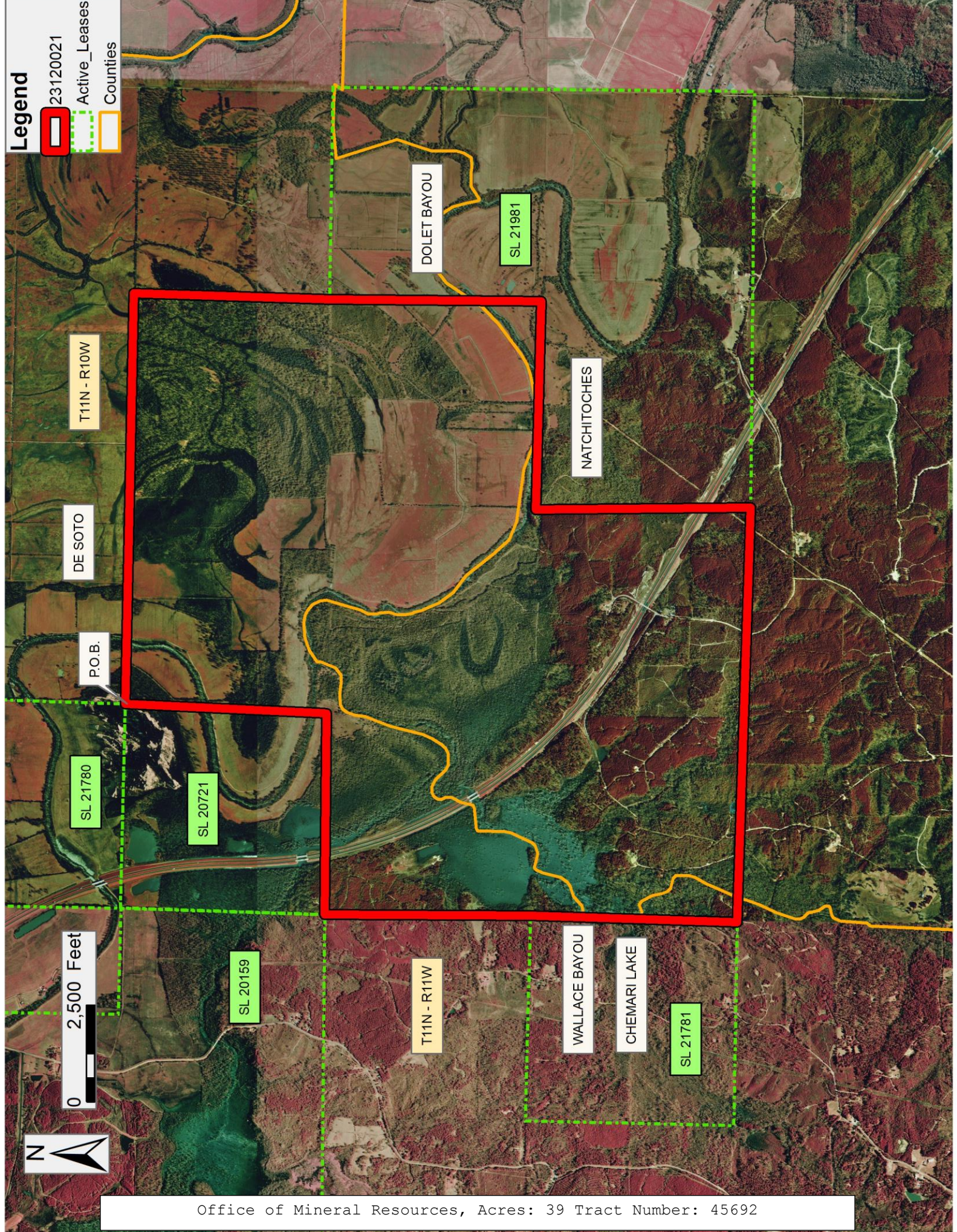
Bidder	Cash Payment	Price/ Acre	Rental	Oil	Gas	Other

Legend

23120021

Active_Leases

Counties



TRACT 45693 - Sabine Parish, Louisiana

All of the mineral rights only under land adjudicated to and acquired by the State of Louisiana in and through a proper tax sale, and subsequently alienated by the State which retained the mineral rights thereto, and which is not under valid mineral lease from the State of Louisiana on December 13, 2023, situated in Sabine Parish, Louisiana, and being more fully described as follows: All of the mineral rights only reserved by the State of Louisiana from land sale, being further described as Lot 3 of Section 12, Township 8 North, Range 12 West, Sabine Parish, Louisiana, being the same lands sold to Joe Rains on October 29, 1952 by the State of Louisiana under Patent #17435, containing approximately **14.22 acres**, all as more particularly outlined on a plat on file in the Office of Mineral Resources, Department of Natural Resources. All bearings, distances and coordinates are based on Louisiana Coordinate System of 1927, (North or South Zone), where applicable.

NOTE: The above description of the Tract nominated for lease has been provided and corrected, where required, exclusively by the nomination party. Any mineral lease selected from this Tract and awarded by the Louisiana State Mineral and Energy Board shall be without warranty of any kind, either express, implied, or statutory, including, but not limited to, the implied warranties of merchantability and fitness for a particular purpose. Should the mineral lease awarded by the Louisiana State Mineral and Energy Board be subsequently modified, cancelled or abrogated due to the existence of conflicting leases, operating agreements, private claims or other future obligations or conditions which may affect all or any portion of the leased Tract, it shall not relieve the Lessee of the obligation to pay any bonus due thereon to the Louisiana State Mineral and Energy Board, nor shall the Louisiana State Mineral and Energy Board be obligated to refund any consideration paid by the Lessor prior to such modification, cancellation, or abrogation, including, but not limited to, bonuses, rentals and royalties.

NOTE: Well to be excluded from the above description and any leases awarded out of the above description is as follows: 1) HA RA SUW; Olympia Min 12 #1 (Serial #243851)

NOTE: The Office of Mineral Resources will require a minimum bonus of \$2000 per acre and a minimum royalty of 25%.

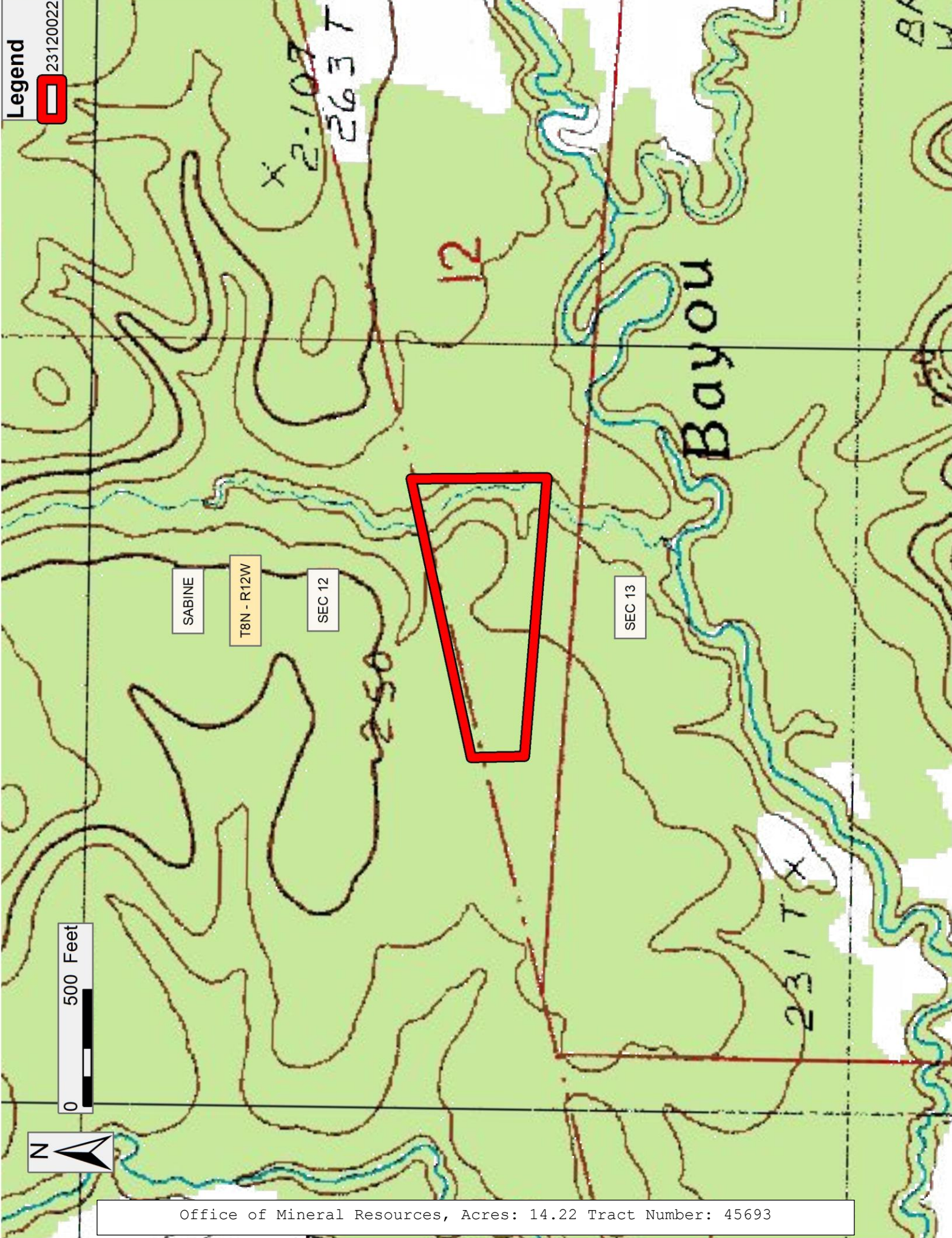
NOTE: No surface activity on this tract undertaken in conjunction with any operations under any mineral lease given on this tract will be allowed without prior approval of the surface owner and further, no such right of surface use shall be deemed to have been given as part of any mineral lease by the State of Louisiana on this tract.

Applicant: STAFF OFFICE OF MINERAL RESOURCES

Bidder	Cash Payment	Price/ Acre	Rental	Oil	Gas	Other



0 500 Feet



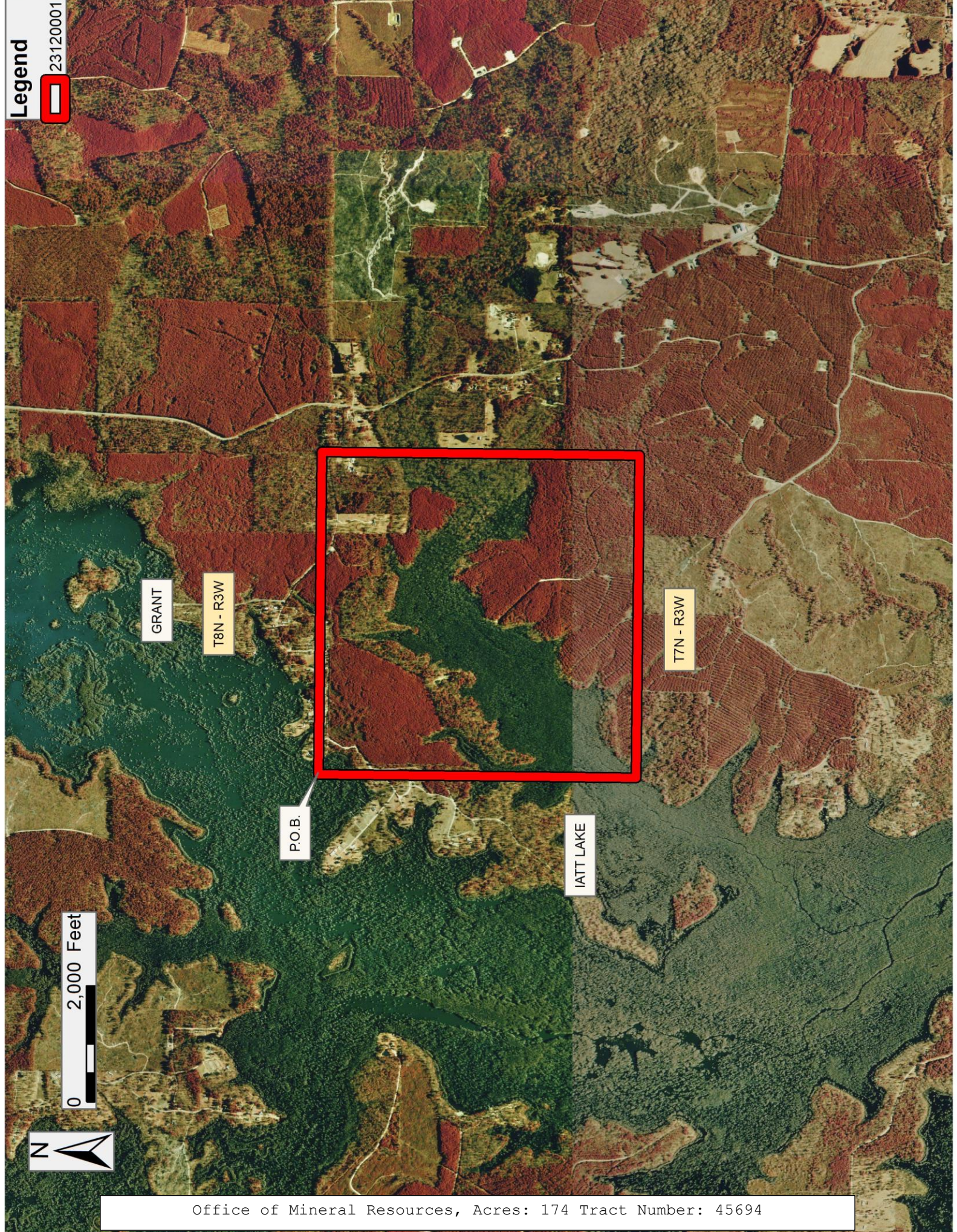
TRACT 45694 - Grant Parish, Louisiana

All of the lands now or formerly constituting the beds and bottoms of all water bodies of every nature and description as to which title is vested in the State of Louisiana, together with all islands arising therein and other lands formed by accretion or by reliction, where allowed by law, excepting tax adjudicated lands, and not presently under mineral lease on December 13, 2023, situated in Grant Parish, Louisiana, and more particularly described as follows: Beginning at a point having Coordinates of X = 1,952,000.00 and Y = 352,670.00; thence East 5,550.00 feet to a point having Coordinates of X = 1,957,550.00 and Y = 352,670.00; thence South 5,470.00 feet to a point having Coordinates of X = 1,957,550.00 and Y = 347,200.00; thence West 5,550.00 feet to a point having Coordinates of X = 1,952,000.00 and Y = 347,200.00; thence North 5,470.00 feet to the Point of Beginning, containing approximately **174 acres**, all as more particularly outlined on a plat on file in the Office of Mineral Resources, Department of Natural Resources. All bearings, distances and coordinates are based on Louisiana Coordinate System of 1927, (North or South Zone), where applicable.

NOTE: The above description of the Tract nominated for lease has been provided and corrected, where required, exclusively by the nomination party. Any mineral lease selected from this Tract and awarded by the Louisiana State Mineral and Energy Board shall be without warranty of any kind, either express, implied, or statutory, including, but not limited to, the implied warranties of merchantability and fitness for a particular purpose. Should the mineral lease awarded by the Louisiana State Mineral and Energy Board be subsequently modified, cancelled or abrogated due to the existence of conflicting leases, operating agreements, private claims or other future obligations or conditions which may affect all or any portion of the leased Tract, it shall not relieve the Lessee of the obligation to pay any bonus due thereon to the Louisiana State Mineral and Energy Board, nor shall the Louisiana State Mineral and Energy Board be obligated to refund any consideration paid by the Lessor prior to such modification, cancellation, or abrogation, including, but not limited to, bonuses, rentals and royalties.

Applicant: PES LLC

Bidder	Cash Payment	Price/ Acre	Rental	Oil	Gas	Other



TRACT 45695 - Iberia Parish, Louisiana

All of the lands now or formerly constituting the beds and bottoms of all water bodies of every nature and description as to which title is vested in the State of Louisiana, together with all islands arising therein and other lands formed by accretion or by reliction, where allowed by law, excepting tax adjudicated lands, and not presently under mineral lease on December 13, 2023, situated in Iberia Parish, Louisiana, and more particularly described as follows: Beginning at a point having Coordinates of X = 1,877,160.00 and Y = 482,010.00; thence South 10,000.00 feet to a point having Coordinates of X = 1,877,160.00 and Y = 472,010.00; thence West 18,480.00 feet to a point having Coordinates of X = 1,858,680.00 and Y = 472,010.00; thence North 10,000.00 feet to a point having Coordinates of X = 1,858,680.00 and Y = 482,010.00; thence East 18,480.00 feet to the point of beginning, containing approximately **65 acres**, all as more particularly outlined on a plat on file in the Office of Mineral Resources, Department of Natural Resources. All bearings, distances and coordinates are based on Louisiana Coordinate System of 1927, (North or South Zone), where applicable.

NOTE: The above description of the Tract nominated for lease has been provided and corrected, where required, exclusively by the nomination party. Any mineral lease selected from this Tract and awarded by the Louisiana State Mineral and Energy Board shall be without warranty of any kind, either express, implied, or statutory, including, but not limited to, the implied warranties of merchantability and fitness for a particular purpose. Should the mineral lease awarded by the Louisiana State Mineral and Energy Board be subsequently modified, cancelled or abrogated due to the existence of conflicting leases, operating agreements, private claims or other future obligations or conditions which may affect all or any portion of the leased Tract, it shall not relieve the Lessee of the obligation to pay any bonus due thereon to the Louisiana State Mineral and Energy Board, nor shall the Louisiana State Mineral and Energy Board be obligated to refund any consideration paid by the Lessor prior to such modification, cancellation, or abrogation, including, but not limited to, bonuses, rentals and royalties.

Applicant: PEPPER PETROLEUM

Bidder	Cash Payment	Price/ Acre	Rental	Oil	Gas	Other



IBERIA

T12S - R7E

P.O.B.

BAYOU TECHE

