

#### **TRACT 45696 - Iberia Parish, Louisiana**

All of the lands now or formerly constituting the beds and bottoms of all water bodies of every nature and description as to which title is vested in the State of Louisiana, together with all islands arising therein and other lands formed by accretion or by reliction, where allowed by law, excepting tax adjudicated lands, and not presently under mineral lease on December 13, 2023, situated in Iberia Parish, Louisiana, and more particularly described as follows: Beginning at a point having Coordinates of X = 1,872,160.00 and Y = 472,010.00; thence East 18,480.00 feet to a point having Coordinates of X = 1,890,640.00 and Y = 472,010.00; thence South 10,000.00 feet to a point having Coordinates of X = 1,890,640.00 and Y = 462,010.00; thence West 18,480.00 feet to a point having Coordinates of X = 1,872,160.00 and Y = 462,010.00; thence North 10,000.00 feet to the point of beginning, (This lease includes only waterbottoms claimed and owned by the state and specifically excludes any land which the state may claim or own and to which the mineral rights are vested in the state), containing approximately **58 acres**, all as more particularly outlined on a plat on file in the Office of Mineral Resources, Department of Natural Resources. All bearings, distances and coordinates are based on Louisiana Coordinate System of 1927, (North or South Zone), where applicable.

NOTE: The above description of the Tract nominated for lease has been provided and corrected, where required, exclusively by the nomination party. Any mineral lease selected from this Tract and awarded by the Louisiana State Mineral and Energy Board shall be without warranty of any kind, either express, implied, or statutory, including, but not limited to, the implied warranties of merchantability and fitness for a particular purpose. Should the mineral lease awarded by the Louisiana State Mineral and Energy Board be subsequently modified, cancelled or abrogated due to the existence of conflicting leases, operating agreements, private claims or other future obligations or conditions which may affect all or any portion of the leased Tract, it shall not relieve the Lessee of the obligation to pay any bonus due thereon to the Louisiana State Mineral and Energy Board, nor shall the Louisiana State Mineral and Energy Board be obligated to refund any consideration paid by the Lessor prior to such modification, cancellation, or abrogation, including, but not limited to, bonuses, rentals and royalties.

Applicant: PEPPER PETROLEUM

Bidder	Cash Payment	Price/ Acre	Rental	Oil	Gas	Other

Legend



23120003

0 2,500 Feet



IBERIA

T12S - R8E

T12S - R7E

P.O.B.

T13S - R8E

T13S - R7E

BAYOU TECHE

**TRACT 45697 - Portion of Block 32, Main Pass Area, Revised, Plaquemines Parish, Louisiana**

All of the lands now or formerly constituting the beds and bottoms of all water bodies of every nature and description as to which title is vested in the State of Louisiana, together with all islands arising therein and other lands formed by accretion or by reliction, where allowed by law, excepting tax adjudicated lands, and not presently under mineral lease on December 13, 2023, situated in Plaquemines Parish, Louisiana, and more particularly described as follows: Beginning at a point within Block 32, Main Pass Area, Revised, said point being on the north line of State Lease No. 1958, as amended, having Coordinates of X = 2,607,566.00 and Y = 297,280.00; thence North 9,246.00 feet to a point having Coordinates of X = 2,607,566.00 and Y = 306,526.00; thence East 11,989.00 feet to a point having Coordinates of X = 2,619,555.00 and Y = 306,526.00; thence South 7,350.17 feet to a point having Coordinates of X = 2,619,555.00 and Y = 299,175.83; thence West 1,029.00 feet to a point having Coordinates of X = 2,618,526.00 and Y = 299,175.83; thence South 1,895.83 feet to a point having Coordinates of X = 2,618,526.00 and Y = 297,280.00, said point being on said north line of said State Lease No. 1958, as amended; thence West along on said North line of said State Lease No. 1958, as amended, 10,960.00 feet to the point of beginning, containing approximately **2,500 acres**, all as more particularly outlined on a plat on file in the Office of Mineral Resources, Department of Natural Resources. All bearings, distances and coordinates are based on Louisiana Coordinate System of 1927, (North or South Zone), where applicable.

NOTE: The above description of the Tract nominated for lease has been provided and corrected, where required, exclusively by the nomination party. Any mineral lease selected from this Tract and awarded by the Louisiana State Mineral and Energy Board shall be without warranty of any kind, either express, implied, or statutory, including, but not limited to, the implied warranties of merchantability and fitness for a particular purpose. Should the mineral lease awarded by the Louisiana State Mineral and Energy Board be subsequently modified, cancelled or abrogated due to the existence of conflicting leases, operating agreements, private claims or other future obligations or conditions which may affect all or any portion of the leased Tract, it shall not relieve the Lessee of the obligation to pay any bonus due thereon to the Louisiana State Mineral and Energy Board, nor shall the Louisiana State Mineral and Energy Board be obligated to refund any consideration paid by the Lessor prior to such modification, cancellation, or abrogation, including, but not limited to, bonuses, rentals and royalties.

NOTE: The State of Louisiana does hereby reserve, and this lease shall be subject to, the imprescriptible right of surface use in the nature of a servitude in favor of the Department of Natural Resources, including its Offices and Commissions, for the sole purpose of implementing, constructing, servicing and maintaining approved coastal zone management and/or restoration projects. Utilization of any and all rights derived under this lease by the mineral lessee, its agents, successors or assigns, shall not

interfere with nor hinder the reasonable surface use by the Department of Natural Resources, its Offices or Commissions, as herein above reserved.

NOTE: This tract is located in an area designated by the Louisiana Legislature or the Wildlife and Fisheries Commission as a Public Oyster Seed Ground, Reservation, or area of Calcasieu or Sabine Lake. Proposed projects occurring in these areas will be evaluated on a case by case basis by Louisiana Department of Wildlife & Fisheries. Modifications to proposed project features including, but not limited to, access routes, well sites, flowlines, and appurtenant structures maybe required by the Louisiana Department of Wildlife and Fisheries. In addition, compensatory mitigation will be required to offset unavoidable habitat impacts.

Applicant: ROBERT A. SCHROEDER, INC.

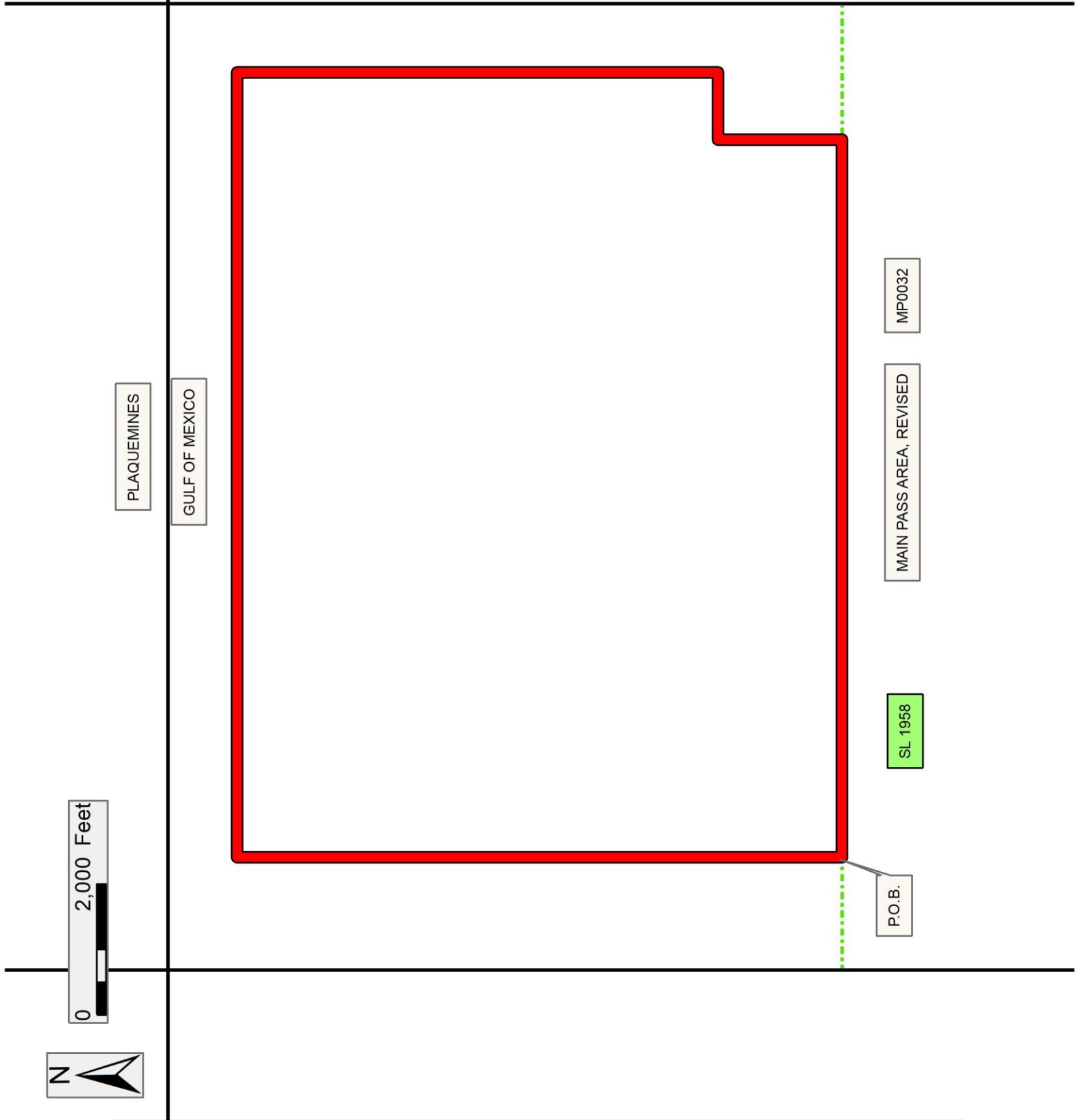
Bidder	Cash Payment	Price/ Acre	Rental	Oil	Gas	Other

Legend

23120018

Blocks

Active\_Leases



**TRACT 45698 - Portion of Block 3, West Delta Area, Plaquemines Parish, Louisiana**

All of the lands now or formerly constituting the beds and bottoms of all water bodies of every nature and description as to which title is vested in the State of Louisiana, together with all islands arising therein and other lands formed by accretion or by reliction, where allowed by law, excepting tax adjudicated lands, and not presently under mineral lease on December 13, 2023, situated in Plaquemines Parish, Louisiana, and more particularly described as follows: Beginning at a point having Coordinates of X = 2,518,415.20 and Y = 248,650.66; thence East 8,000.00 feet to a point having Coordinates of X = 2,526,415.20 and Y = 248,650.66; thence South 18,000.00 feet to a point having Coordinates of X = 2,526,415.20 and Y = 230,650.66; thence West 8,003.51 feet to a point having Coordinates of X = 2,518,411.69 and Y = 230,650.66; thence North 14,349.34 feet to a point having Coordinates of X = 2,518,411.69 and Y = 245,000.00; thence North 00 degrees 03 minutes 18 seconds East 3,650.66 feet to the point of beginning, containing approximately **2,200 acres**, all as more particularly outlined on a plat on file in the Office of Mineral Resources, Department of Natural Resources. All bearings, distances and coordinates are based on Louisiana Coordinate System of 1927, (North or South Zone), where applicable.

NOTE: The above description of the Tract nominated for lease has been provided and corrected, where required, exclusively by the nomination party. Any mineral lease selected from this Tract and awarded by the Louisiana State Mineral and Energy Board shall be without warranty of any kind, either express, implied, or statutory, including, but not limited to, the implied warranties of merchantability and fitness for a particular purpose. Should the mineral lease awarded by the Louisiana State Mineral and Energy Board be subsequently modified, cancelled or abrogated due to the existence of conflicting leases, operating agreements, private claims or other future obligations or conditions which may affect all or any portion of the leased Tract, it shall not relieve the Lessee of the obligation to pay any bonus due thereon to the Louisiana State Mineral and Energy Board, nor shall the Louisiana State Mineral and Energy Board be obligated to refund any consideration paid by the Lessor prior to such modification, cancellation, or abrogation, including, but not limited to, bonuses, rentals and royalties.

NOTE: The State of Louisiana does hereby reserve, and this lease shall be subject to, the imprescriptible right of surface use in the nature of a servitude in favor of the Department of Natural Resources, including its Offices and Commissions, for the sole purpose of implementing, constructing, servicing and maintaining approved coastal zone management and/or restoration projects. Utilization of any and all rights derived under this lease by the mineral lessee, its agents, successors or assigns, shall not interfere with nor hinder the reasonable surface use by the Department of Natural Resources, its Offices or Commissions, as herein above reserved.

NOTE: It appears, according to our records, that a portion of this Tract is located within the restrictive safety fairway area as set out by the Corps

of Engineers, U.S. Army and/or the restrictive anchorage area as set out by the U.S. Coast Guard.

Applicant: OIL LAND SERVICES, INC.

Bidder	Cash Payment	Price/ Acre	Rental	Oil	Gas	Other

**Legend**

23120015

Blocks



0 4,000 Feet

PLAQUEMINES

P.O.B.

BASTIAN BAY

GULF OF MEXICO

WD0003

WEST DELTA AREA

**TRACT 45699 - Portion of Block 2, West Delta Area, Plaquemines Parish, Louisiana**

All of the lands now or formerly constituting the beds and bottoms of all water bodies of every nature and description as to which title is vested in the State of Louisiana, together with all islands arising therein and other lands formed by accretion or by reliction, where allowed by law, excepting tax adjudicated lands, and not presently under mineral lease on December 13, 2023, situated in Plaquemines Parish, Louisiana, and more particularly described as follows: Beginning at a point having Coordinates of X = 2,510,150.00 and Y = 248,354.05; thence South approximately 10,566 feet to a point on the boundary of the northern portion of Special Section 16, Township 21 South, Range 27 East created under Senate Act 971 in the 2010 Regular Session; thence along the boundary of said Special Section 16 the following: Southwesterly, Southerly, and Northeasterly approximately 2,566 feet to a point; thence South approximately 1,656 feet to a point of intersection with the southern portion of said Special Section 16, Township 21 South, Range 27 East; thence along the boundary of said Special Section 16 the following: Southwesterly, Westerly, Southerly, and Easterly to a point of intersection with a line that bears North and commences at a point having Coordinates of X = 2,510,150.00 and Y = 230,650.66; thence West 7,923.27 feet to a point having Coordinates of X = 2,502,226.73 and Y = 230,650.66; thence North 5,631.66 feet to the Southeast corner of State Lease No. 1753, as amended, having Coordinates of X = 2,502,226.73 and Y = 236,282.32; thence on and along the boundary of said State Lease No. 1753, as amended, the following courses: North 00 degrees 04 minutes 59 seconds West 1,226.80 feet to a point having Coordinates of X = 2,502,224.95 and Y = 237,509.12, North 00 degrees 05 minutes 11 seconds West 3,060.88 feet to a point having Coordinates of X = 2,502,220.33 and Y = 240,570.00, North 89 degrees 15 minutes 00 seconds East 4,396.44 feet to a point having Coordinates of X = 2,506,616.39 and Y = 240,627.54, North 00 degrees 02 minutes 12 seconds West 5,045.87 feet to the Northeast corner of said State Lease No. 1753, as amended, having Coordinates of X = 2,506,613.16 and Y = 245,673.41; thence North 2,680.64 feet to a point having Coordinates of X = 2,506,613.16 and Y = 248,354.05; thence East 3,536.84 feet to the point of beginning, **LESS AND EXCEPT** all that portion of State Lease No. 10854, as amended, that lies within the above described tract. The above described tract contains approximately **1,496 acres**, all as more particularly outlined on a plat on file in the Office of Mineral Resources, Department of Natural Resources. All bearings, distances and coordinates are based on Louisiana Coordinate System of 1927, (North or South Zone), where applicable.

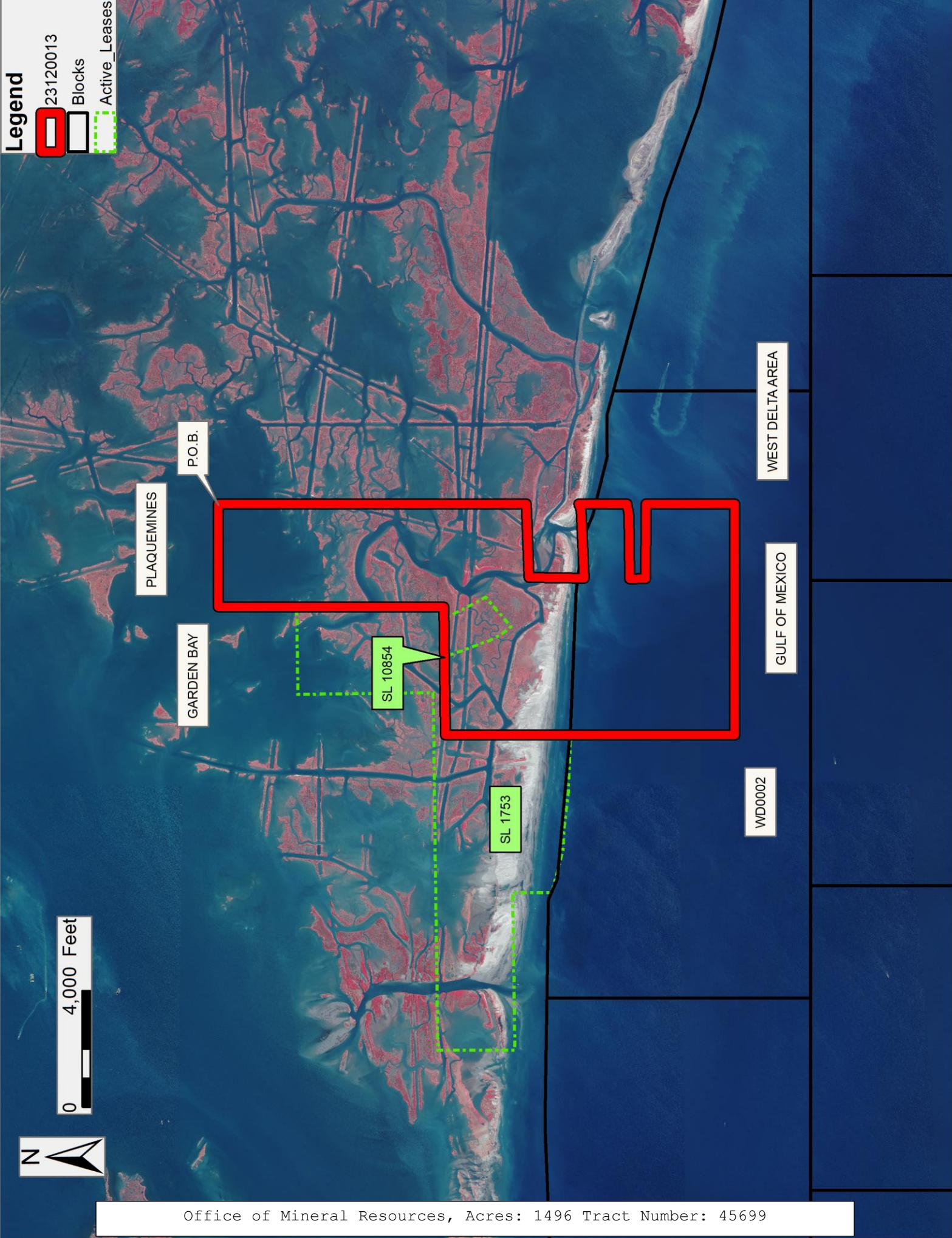
NOTE: The above description of the Tract nominated for lease has been provided and corrected, where required, exclusively by the nomination party. Any mineral lease selected from this Tract and awarded by the Louisiana State Mineral and Energy Board shall be without warranty of any kind, either express, implied, or statutory, including, but not limited to, the implied warranties of merchantability and fitness for a particular purpose. Should the mineral lease awarded by the Louisiana State Mineral and Energy Board be subsequently modified, cancelled or abrogated due to the existence of

conflicting leases, operating agreements, private claims or other future obligations or conditions which may affect all or any portion of the leased Tract, it shall not relieve the Lessee of the obligation to pay any bonus due thereon to the Louisiana State Mineral and Energy Board, nor shall the Louisiana State Mineral and Energy Board be obligated to refund any consideration paid by the Lessor prior to such modification, cancellation, or abrogation, including, but not limited to, bonuses, rentals and royalties.

NOTE: The State of Louisiana does hereby reserve, and this lease shall be subject to, the imprescriptible right of surface use in the nature of a servitude in favor of the Department of Natural Resources, including its Offices and Commissions, for the sole purpose of implementing, constructing, servicing and maintaining approved coastal zone management and/or restoration projects. Utilization of any and all rights derived under this lease by the mineral lessee, its agents, successors or assigns, shall not interfere with nor hinder the reasonable surface use by the Department of Natural Resources, its Offices or Commissions, as herein above reserved.

Applicant: OIL LAND SERVICES, INC.

Bidder	Cash Payment	Price/ Acre	Rental	Oil	Gas	Other



Legend

- 23120013
- Blocks
- Active\_Leases

0 4,000 Feet



**TRACT 45700 - Portion of Blocks 2, and 3, West Delta Area, Plaquemines Parish, Louisiana**

All of the lands now or formerly constituting the beds and bottoms of all water bodies of every nature and description as to which title is vested in the State of Louisiana, together with all islands arising therein and other lands formed by accretion or by reliction, where allowed by law, excepting tax adjudicated lands, and not presently under mineral lease on December 13, 2023, situated in Plaquemines Parish, Louisiana, and more particularly described as follows: Beginning at a point being having Coordinates of X = 2,518,411.69 and Y = 245,000.00; thence South 14,349.34 feet to a point having Coordinates of X = 2,518,411.69 and Y = 230,650.66; thence West 8,261.69 feet to a point having Coordinates of X = 2,510,150.00 and Y = 230,650.66; thence North approximately 3,035 feet to a point of intersection with the southern portion of Special Section 16, Township 21 South, Range 27 East created under Senate Act 971 in the 2010 Regular Session; thence around the boundary of said Special Section 16 the following: Easterly, Northeasterly, Northwesterly, and Southwesterly approximately 1,438 feet to a point; thence North approximately 1,656 feet to a point of intersection with the northern portion of said Special Section 16, Township 21 South, Range 27 East; thence around the boundary of said Special Section 16 the following: Northeasterly, Northerly, and Southwesterly to a point of intersection with a line that bears South and commences at a point having Coordinates of X = 2,510,150.00 and Y = 245,000.00; thence North approximately 7,206 feet to a point having Coordinates of X = 2,510,150.00 and Y = 245,000.00; thence East 8,261.69 feet to the point of beginning, containing approximately **1,443 acres**, all as more particularly outlined on a plat on file in the Office of Mineral Resources, Department of Natural Resources. All bearings, distances and coordinates are based on Louisiana Coordinate System of 1927, (North or South Zone), where applicable.

NOTE: The above description of the Tract nominated for lease has been provided and corrected, where required, exclusively by the nomination party. Any mineral lease selected from this Tract and awarded by the Louisiana State Mineral and Energy Board shall be without warranty of any kind, either express, implied, or statutory, including, but not limited to, the implied warranties of merchantability and fitness for a particular purpose. Should the mineral lease awarded by the Louisiana State Mineral and Energy Board be subsequently modified, cancelled or abrogated due to the existence of conflicting leases, operating agreements, private claims or other future obligations or conditions which may affect all or any portion of the leased Tract, it shall not relieve the Lessee of the obligation to pay any bonus due thereon to the Louisiana State Mineral and Energy Board, nor shall the Louisiana State Mineral and Energy Board be obligated to refund any consideration paid by the Lessor prior to such modification, cancellation, or abrogation, including, but not limited to, bonuses, rentals and royalties.

NOTE: The State of Louisiana does hereby reserve, and this lease shall be subject to, the imprescriptible right of surface use in the nature of a servitude in favor of the Department of Natural Resources, including its

Offices and Commissions, for the sole purpose of implementing, constructing, servicing and maintaining approved coastal zone management and/or restoration projects. Utilization of any and all rights derived under this lease by the mineral lessee, its agents, successors or assigns, shall not interfere with nor hinder the reasonable surface use by the Department of Natural Resources, its Offices or Commissions, as herein above reserved.

NOTE: It appears, according to our records, that a portion of this Tract is located within the restrictive safety fairway area as set out by the Corps of Engineers, U.S. Army and/or the restrictive anchorage area as set out by the U.S. Coast Guard.

Applicant: OIL LAND SERVICES, INC.

Bidder	Cash Payment	Price/ Acre	Rental	Oil	Gas	Other

PLAQUEMINES

P.O.B.

BAYOU HUERTES

BAY JOE WISE

WD0003

GULF OF MEXICO

WEST DELTA AREA

WD0002

0 2,500 Feet

