

**TRACT 45701 - Caddo Parish, Louisiana**

A certain Tract of land, excluding the beds and bottoms of all navigable waters, belonging to and not presently under mineral lease from Caddo Parish Commission on December 13, 2023, being more fully described as follows: Those certain road dedications located in Section 31, Township 19 North, Range 15 West, known as Quiet acres Road, Peaceful Lane, Calm Street, and other multiple unnamed or unbuilt roads, all located in Caddo Parish Louisiana containing 18.061 acre, more or less, and that certain adjudicated property described as the North 60 ft. of Lot 1, Quiet Country Subdivision, Unit 4, containing .345 acres, more or less, within Section 31, Township 19 north, Range 15 West, containing a total of **18.41 acres**, all as more particularly outlined on a plat on file in the Office of Mineral Resources, Department of Natural Resources. The description is based on information provided by the State Agency regarding location and ownership of surface and mineral rights. All bearings, distances and coordinates, if applicable, are based on Louisiana Coordinate System of 1927, (North or South Zone).

NOTE: The above description of the Tract nominated for lease has been provided and corrected, where required, exclusively by the nomination party. Any mineral lease selected from this Tract and awarded by the Louisiana State Mineral and Energy Board shall be without warranty of any kind, either express, implied, or statutory, including, but not limited to, the implied warranties of merchantability and fitness for a particular purpose. Should the mineral lease awarded by the Louisiana State Mineral and Energy Board be subsequently modified, cancelled or abrogated due to the existence of conflicting leases, operating agreements, private claims or other future obligations or conditions which may affect all or any portion of the leased Tract, it shall not relieve the Lessee of the obligation to pay any bonus due thereon to the Louisiana State Mineral and Energy Board, nor shall the Louisiana State Mineral and Energy Board be obligated to refund any consideration paid by the Lessor prior to such modification, cancellation, or abrogation, including, but not limited to, bonuses, rentals and royalties.

NOTE: Lessee, it's successors or assigns, may produce oil, gas and other minerals from the leased premises by drilling from a surface location on other lands, but notwithstanding any other provision of this lease, Lessee, it's successors or assigns, shall not use the surface of the Lessor's property for drilling or any other operations without prior written permission of Lessor, which permission may be withheld at Lessor's discretion.

NOTE: Notwithstanding anything to the contrary herein contained, at the end of the primary term or any extension thereof by operations, if the Commission of Conservation of the State of Louisiana establishes a drilling unit which included a part of the land herein leased, the production of oil, gas and other minerals from such unit shall maintain this lease in full force and effect only as to such portions of the leased land embraced in said pooled unit; and this lease shall expire as to that part of the land herein leased not included in such unit; and lessee, its successors and assigns agrees to

relinquish by formal instrument any portion of the leased land not included in a unit created by the Commission of Conservation while this lease is in effect.

NOTE: Upon the expiration of the primary term hereof or any extension thereof by operations, this lease shall automatically terminate and be of no further force or effect except as to all that part of the leased premises then included within the geographical boundaries of a producing unit duly established by governmental agency or authority having jurisdiction, from the surface of the earth to a depth of 100 feet below the deepest depth from which any well commenced during the primary term hereof on the leased premises or on lands pooled therewith is completed and from which there is production in paying quantities, such depth determination to be made on a unit by unit basis. In the absence of units so established, this lease shall terminate except as to 40 acres around each producing oil well and 160 acres around each producing or shut-in gas well located on the leased premises, in as near the form of a square as is practicable, from the surface of the earth down to a depth of 100 feet below the deepest depth from which said well or wells are completed and from which there is production in paying quantities, such depth determination to be made on a well by well basis.

NOTE: The Caddo Parish Commission will require a minimum bonus of \$3,000.00 per acre and a minimum royalty of not less than 1/4th or 25%.

Applicant: CYPRESS ENERGY PARTNERS, LLC to Agency and by Resolution from the Caddo Parish Commission authorizing the Mineral Board to act in its behalf

Bidder	Cash Payment	Price/ Acre	Rental	Oil	Gas	Other





CADDO

T19N - R15W

SEC 30

SEC 32

T18N - R15W

SEC 6

T19N - R16W

SEC 36

T18N - R16W

0 2,000 Feet





**TRACT 45702 - Caddo Parish, Louisiana**

A certain Tract of land, excluding the beds and bottoms of all navigable waters, belonging to and not presently under mineral lease from Caddo Parish Commission on December 13, 2023, being more fully described as follows: Those certain adjudicated properties located in Section 9, Township 18 North, Range 14 West, described as the East 200 ft. of West 1303.86 ft. of Gov't Lot 16, less that part in Griffin Park, Geo. #181409-000-0066, Lot 1, Narcissus Park subdivision and 11.93 acres being the West 591.96 ft. of Gov't Lot 16 less the South 420 ft. thereof and less that part in Narcissus Park subdivision, Geo. #181409-002-0001, said property containing a total of 14.11 gross acres and 7.05 net acres all situated within Section 9, Township 18 North, Range 14 West, Caddo Parish, Louisiana.

Those certain adjudicated properties located in Section 16, Township 18 North, Range 14 West, described as the West 150 ft. of North 150 ft. of SW/4 of SW/4 of SW/4 of Section 16 less ROW, Geo. #181416-000-0022, the North 258.58 ft. of West 77.25 ft. of East 314.36 ft. of SW/4 of SW/4 of SW/4 of Section 16, Geo. #181416-000-0044, 1.403 acres in the SW/4 of SW/4 of SW/4 of Section 16, Geo. #181416-000-0051, the North 1.17 acres of Lot 52, Jones-Mabry subdivision, Geo. #181416-001-0152, the North 103.71 ft. of South 207.42 ft. of Lot 52, Jones-Mabry subdivision, Geo. #181416-001-0160, the South 1 acre of Lot 46, Jones-Mabry subdivision, Geo. #181416-001-0186, the South 1 acre of Lot 45, Jones-Mabry subdivision, Geo. #181416-001-0204, the North .85 acre of South 1.85 acre of Lot 45, Jones-Mabry subdivision, Geo. #181416-004-0205, the Northeasterly 50 ft. of Southwesterly 200 ft. of Lot 14 less road and Northeasterly 50 ft. of Southwesterly 200 ft. of Northwesterly 15 ft. of Lot 25, Jones-Mabry subdivision, Geo. #181416-001-0209, the Northwesterly 50 ft. of Southeasterly 315 ft. of Southwesterly 150 ft. of Northeasterly 180 ft. of Lot 25, Jones-Mabry subdivision, Geo. #181416-001-0214, the rear 40 ft. of Lot 8, Jones-Mabry subdivision, Geo. #181416-001-0252, the East 65 ft. of South 1250 ft. of East 2.11 acres of West 3061 acres of Lot 42, Jones-Mabry subdivision, Geo. #181416-001-0260, the North 45 ft. of South 247.4 ft. of East 150 ft. of Lot 45, Jones-Mabry subdivision, Geo. #181416-001-0288, , the Southwesterly 60 ft. of Northeasterly 165 ft. of Lot 15, Jones-Mabry subdivision, Geo. #181416-001-0314, the North 50 ft. of East 130 ft. of Lot 45, Jones-Mabry subdivision, Geo. #181416-001-0331, the South 50 ft. of North 217.8 ft. of East 130 ft. of Lot 45, Jones-Mabry subdivision, Geo. #181416-001-0333, , the West 200 ft. of North 54.45 ft. of South 311.3 ft. of Lot 45, Jones-Mabry subdivision, Geo. #181416-001-0359, the North 108.9 ft. of South 311.3 ft. of Lot 45 less South 45 ft. of East 150 ft. and the North 54.45 ft. of West 200 ft. thereof, Jones-Mabry subdivision, Geo. #181416-001-0360, , a tract of land in Lot 48, Jones-Mabry subdivision, Geo. #181416-001-0369, , Lot 14, Schoolside subdivision, 181416-002-0014, Lot B, Cameron Park subdivision, 181416-006-0004 Lot D, Montana Park subdivision, 181416-007-0027, Lot A, Montana Park subdivision, 181416-007-0035, Lot A, Thomas J. Hawkins subdivision, 181416-008-0001, the South half of Lot 211 & 212, Jones-Mabry subdivision, Unit #3, Geo. #181416-009-0241, the South 125 ft. of Lot 233, Jones-Mabry subdivision, Unit #3, Geo. #181416-009-0244, Lot 229, less the North 220 ft. of East 139

ft., Jones-Mabry subdivision, Unit #3, Geo. #181416-009-0247, the North 80 ft. of West 112.21 ft. of Lot 232, Jones-Mabry subdivision, Unit #3, Geo. #181416-009-0250, the South 80 ft. of West 112.21 ft. of Lot 232, Jones-Mabry subdivision, Unit #3, Geo. #181416-009-0251, the South 148.02 ft. of North 228.02 ft. of West 112.21 ft. of Lot 232, Jones-Mabry subdivision, Unit #3, Geo. #181416-009-0254, Lot A, Reese Park subdivision, Unit A, 181416-011-0001, Lot B, Reese Park subdivision, Unit A, 181416-011-0002, Lot C, Reese Park subdivision, Unit A, 181416-011-0003, Lot D, Reese Park subdivision, Unit A, 181416-011-0004, Geo. # 181416012023400, The N. 132.40 Ft Of Lots 221 & 222 Jones-Mabry Sub., unit 3, Geo. # 181416012025600, The N. 35.99 Ft Of S. 195.99 Ft Of W. 120 Ft Of Lot 222, Jones-Mabry Subn., Unit 3, Geo # 181416012029100, A Tract Of Land In Lot 221, Jones-Mabry Subn., unit No. 3, Geo # 181416014023800, Lot 238 Of Jones-Mabry Sub., Unit #3, Geo # 181416014026500, The E. 67.5 Ft Of W. 95 Ft Of N. 125 Ft Of Lot 251, jones Mabry Sub., Unit #3, Geo # 181416014026600, The E. 90 Ft Of W. 185 Ft Of N. 125 Ft Of Lot 251, Jones-Mabry Sub., Unit 3, Geo # 181416014026700, The W. 45 Ft Of E. 79 Ft Of N. 125 Ft Of Lot 251, jones-Mabry Subn., Unit 3, Geo # 181416014026900, The N. 125 Ft Of W. 27.5 Ft Of Lot 251 & N. 125 Ft of E. 62.5 Ft Of Lot 252, Jones-Mabry Sub.,unit 3, Geo # 181416014027700, The W. 54.8 Ft Of N. 125 Ft Of Lot 252 & E. 40.2 Ft of N. 125 Ft Of Lot 253, Jones-Mabry Sub., Geo # 181416014028000, The E. 55 Ft Of S. 160 Ft Of Lot 252, Jones-Mabry sub., Unit 3, Geo # 181416014028200, The North 171.31 Ft. Of South 189.31 Ft. Of East 40.46 Ft. Of Lot 253 & North 171.31 Ft. Of South 189.31 Ft. Of West 66.54 Ft. Of Lot 252, jones-Mabry Sub., Unit 3, Geo # 181416014029000, The East 44 Ft Of West 132 Ft Of Lot 250, Less north 155 Ft Thereof, Jones-Mabry Sub, Unit #3, Geo # 181416014029200, The W. 88 Ft Of Lot 250, Less N. 155 Ft., jones-Mabry Sub., Unit #3, Geo # 181416014029300, The East 44 Ft Of Lot 250, Less The North 155 Ft thereof, Jones-Mabry Subn., Unit 3, Geo # 181416014029700, The South 29.37 Ft. Of North 154.37 Ft. Of West 230 ft. Of Lot 251, Jones-Mabry Sub, Unit 3, Geo # 181416014030000, The W. 60 Ft Of E. 175 Ft Of S. 160 Ft Of Lot 252, jones-Mabry Subn., Unit #3, Geo # 181416014030100, The South 18 Ft Of East 40.46 Ft Of Lot 253, Lot 252, Less North 125 Ft Thereof & Less North 171.31 Ft Of South 189.31 Ft Of West 66.54 ft. Thereof & Less South 160 Ft Of East 175 ft. Thereof, Jones-Mabry Subn Unit 3, Geo # 181416014032200 The S. 140 Ft. Of The W. 65 Ft. Of Lot 247, Jones-Mabry Sub., Unit #3, Geo # 181416014032300, The Lot 247, Less The S. 140 Ft. Of The W. 65 Ft. Jones-Mabry Sub., Unit #3, Geo # 181416014033200, Lot 244 & W. .90 Acre Of Lot 245 jones-Mabry Subn., Unit #3, Less R/W, Geo # 181416016000100, Lot A, Taylors Two Lot Sub, Geo # 181416017030800, The E. 50 Ft Of S. 165 Ft Of Lot 277, Jones-Mabry sub Unit 3, Geo # 181416017031200, The W. 38 Ft Of N/2 Of Lot 269 Jones-Mabry Sub, 3, Geo # 181416017031300, The E. 38 Ft Of W. 76 Ft Of N/2 Of Lot 269, Jones-mabry Subn., Unit 3, Geo # 181416017031400, The E. 38 Ft. Of W. 114 Ft. Of N/2 Of Lot 269, jones Mabry Subn., Unit #3, Geo # 181416017031800, The W. 38 Ft Of E. 150 Ft Of N/2 Of Lot 269, jones-Mabry Sub, Unit 3, Geo # 181416017032300, The W. 44 Ft Of E. 88 Ft Of S. 115 Ft Of Lot 258 jones-Mabry Subn., Unit 3, Geo # 181416017032400, The W. 44 Ft Of E. 132 Ft Of S. 115 Ft Of Lot 258 jones-Mabry Subn., Unit 3, Geo # 181416017032600, The W. 44 Ft Of E. 220 Ft Of S. 165 Ft Of Lot 258, Jones-

Mabry Sub., Unit #3, Geo # 181416017033100, The East 100 Ft. Of Lot 290, Jones-Mabry Subn., Unit #3, Geo # 181416017033200, The W. 76 Ft. Of E. 176 Ft. Of Lot 290, Jones-Mabry subn., Unit #3, Geo # 181416017034000, The North 100 Ft Of E. 70 Ft Of Lot 254 jones-Mabry Sub., Unit #3, Geo # 181416017035200, The W. 120 Ft. Of Lot 270, Jones mabry Subn., Unit #3, Geo # 181416018000400, Lot 4, Miller-Bradford Sub, Geo # 181416018001000, Lot 10, Miller-Bradford Sub., Geo # 181416018001600, The W 8.5 Ft. Of Lot 6, Miller-Bradford subd., Geo # 181416019000200, Lot 2, Millen & Dodson Sub, Geo # 181416019000400, Lot 4, Millen & Dodson Sub, Geo # 181416019001200, Lot 12, Millen & Dodson Sub, Geo # 181416019001400, Lot 14, Millen & Dodson Sub, Geo # 181416019001500, Lot 15, Millen & Dodson Sub, Geo # 181416023000200, Lot 2-A, Steven Israel Subn., Unit 2, Geo # 181416024026400, Lot 264, Jones-Mabry Sub, Unit 3, Geo # 181416024029000, The East 0.89 Acre Of Lot 259, Jones-Mabry sub Unit 3, Geo # 181416024031300, The E/2 Of Lot 287, Jones-Mabry Sub., Geo # 181416024031800, The S. 230 Ft Of Lot 288, Less W. 112 Ft Thereof, jones-Mabry Sub., Unit #3, Geo # 181416024032200, The W/2 Of Lot 284, Less The N. 165 Ft. Of the E. 100 Ft., Thereof, Geo # 181416025000300, Lot 3, Re-Subn. Of Lot 281, Jones-Mabry Subn., unit 3, Geo # 181416028000100, Lot A, Avery Park, Geo # 181416029035500, The W 42.43 Ft Of Lot 322, Jones-Mabry Sub 3, Geo # 181416029035700, The W/2 Of E/2 Of Lot 297, Jones-Mabry Sub 3, Geo # 181416029035800, The S. 50 Ft Of N. 100 Ft Of W. 135 Ft Of lot 294, Jones-Mabry Subn., Unit #3, Less R/W, Geo # 181416029036500, The South 55 Ft Of North 220 Ft & South 55 Ft Of north 165 Ft Of E/2 Of Lot 298, Jones-Mabry sub., Unit #3, Geo # 181416029037400, The S. 20 Ft Of N. 147.25 Ft Of W. 53 Ft Of Lot 325, jones-Mabry Subn., Unit 3, Geo # 181416029039100, The North 55 Ft. Of E/2 Of Lot 298, Jones-Mabry subn., Unit 3, Geo # 181416029039600, The S. 135 Ft. Of E. 50 Ft. Of Lot 294, Jones-Mabry subn., Unit #3, Geo # 181416029039700, The W/2 Of S. 135 Ft. Of E. 109 Ft. Of Lot 294, jones-Mabry Subn., Unit #3, Geo # 181416030001200, Lot 12, Cooper Hills Sub, Geo # 181416031000100, Lot 1, Phillips Park, Geo # 181416035034100, The S. 152 Ft Of Lots 314 & 315, Jones-Mabry Subn. unit 3, Geo # 181416035034400, The West 78.35 Ft. Of East 156.70 Ft. Of Lot 327, jones-Mabry Sub., Unit 3 Geo # 181416035036300, The East 214 Ft. Of North 150 Ft. Lot 312, jones-Mabry Sub., Unit 3. Geo # 181416035036400, The South 180 Ft. Of Lot 312, Jones-Mabry Sub, unit #3, Geo # 181416035036900, The E/2 Of Lot 311, Less W. 26 Ft Of N. 26 Ft, thereof, Jones-Mabry Subn, Unit #3, Geo # 181416038000800, Lot 8, Resub Of Lots A, B, C, & D Rhodessa Sims Lot, Geo # 181416039000400, Lot D, Jonas Nichols Sub, Geo # 181416039000600, Lot F, Jonas Nichols Sub, Geo # 181416041000100, Lot 1, Fox Subn, Geo # 181416045036300, The North 130 Ft Of West 135 Ft Of Lot 307, jones-Mabry Sub., Unit #3, Geo # 181416045037100, The South 100 Ft Of North 230 Ft Of West 135 Ft of Lot 307, Jones-Mabry Sub 3. Geo # 181416045038000, The E/2 Of E/2 Of Lot 308, Jones-Mabry Sub., Unit #3, Geo # 181416045038100, The W/2 Of E/2 Of Lot 308, Jones-Mabry Subn., Unit #3, Geo # 181416046001300, Lot 13, Bunche Sub., Unit #1, Geo # 181416046001400, Lot 14, Bunche Sub., Unit #1, Geo # 181416046001500, Lot 15, Bunche Subn., Unit 1, Geo # 181416046002900, Lot 25 & E/2 Of Lot 24, Bunche Subn., unit #1, Geo # 181416047003500, Lot 35, Bunche Sub., Unit 2, Geo # 181416047003700, Lot 37, Bunche Sub Unit 2, Geo # 181416047003800, Lots 32 & 33, Bunch Sub., Unit #2, Geo #

181416050000600, The W. 50 Ft. Of Lot B, Washington Partn. Of Lot 310 Jones-Mabry Sub, Unit 3, Geo # 181416050000800, Lot C, Washington Partn Of Lot 310, Jones-Mabry sub, Unit 3, Geo # 181416056003100, Lot 31, Mc Cain Creek Estates, Unit #1, Geo # 181416057004800, Lot 48, Mc Cain Creek Estates, Unit #2, Geo # 181416057005900, Lot 59, Mc Cain Creek Estates, Unit 2, Geo # 181416057006000, Lot 60, Mc Cain Creek Estates, Unit 2, Geo # 181416057006400, Lot 64, Mc Cain Creek Estates, Unit #2, Geo # 181416057006500, Lot 65, Mc Cain Creek Estates, Unit #2, Geo # 181416057006800, Lot 68, Mc Cain Creek Estates, Unit #2, Geo # 181416059000300, Lots 1 & 2, Rosie F. Griffin Park, Geo # 181416061000200, Lot 2, Crawford Park, Geo # 181416061000700, Lot 7, Crawford Park, Geo # 181416061001000, Lot 10, Crawford Park, Geo # 181416061001200, Lot 12, Crawford Park, Geo # 181416061001300, Lot 13, Crawford Park, Geo # 181416061001400, Lot 14, Crawford Park, Geo # 181416061001800, The N. 75.84 Ft. Of Lot 4, Crawford Park, Geo # 181416061002000, Geo # 181421001005800, Lot 58, Jones-Mabry Subn., Unit no. 2, Less R/W, Geo # 181421001019400, The Sw/2 Of Lot 56, Jones-Mabry sub., Unit #2, Geo # 181421001023400, A Parcel Of Land In Lot 57, Jones-Mabry sub 2., above described property containing a total of 53.90 gross acres and 26.95 net acres all situated within Section 16, Township 18 North, Range 14 West, Caddo Parish, Louisiana.

Those certain adjudicated properties located in Section 21, Township 18 North, Range 14 West, described as the East half of Lot 128, Jones-Mabry Subdivision, Unit 2, Geo. #181421-001-0138, the North 120 ft. of East 40 of Lot 95, Jones-Mabry Subdivision, Unit 2, Geo. #18121-001-0211, the North 55 ft. of South 110 ft. of West Half of Lot 64, Jones-Mabry Subdivision, Unit 2, less Westerly portion thereof, Geo. #18121-001-0251, the North 55 ft. of South 165 ft. of West Half of Lot 64, Jones-Mabry Subdivision, Unit 2, Geo. #18121-001-0253, the North 50 ft. of South 70 ft. of West Half of Lot 69, Jones-Mabry Subdivision, Unit 2, Geo. #18121-001-0254, the South 50 ft. of North 80 ft. of West Half of Lot 78, Jones-Mabry Subdivision, Unit 2, Geo. #18121-001-0255, the West 50 ft. of East 100 ft. of South 100 ft. of Lot 108, Jones-Mabry Subdivision, Unit 2, Geo. #181421-001-0284 the North 45 ft. of South 95 ft. of East 19 ft. of Lot 113 and the North 45 ft. of South 95 ft. of Lot 114, Jones-Mabry Subdivision, Unit 2, Geo. #181421-001-0293, the South 40 ft. of North 228 ft. of West 133 ft. of Lot 108, Jones-Mabry Subdivision, Unit 2, Geo. #181421-001-0294, the West 50 ft. of South 125 ft. of Lot 85, Jones-Mabry Subdivision, Unit 2, Geo. #18121-001-0308, the East 73 ft. of West 132 ft. of North 177 ft. of Lot 69, Jones-Mabry Subdivision, Unit 2, Geo. #181421-001-0349, the North 125 ft. of East 100 ft. of West Half of Lot 70, Jones-Mabry Subdivision, Unit 2, Geo. #181421-001-0383, a tract measuring 10.45 ft. on North and 10.61 ft. on the South of the South 45 ft. of North 183 ft. of West 186.98 ft. of Lot 115, Jones-Mabry Subdivision, Unit 2, Geo. #181421-001-0388, Lot 126, Jones-Mabry Subdivision, Unit 2, Geo. #181421-001-0405 Lot 1, Cooper Heights Subdivision, Geo. #181421-002-0001, Lot 2, Hicks-Baker Subdivision, Geo. #181421-003-0002, Lot 5, Cooper Heights Subdivision, Unit 5, Geo. #181421-005-0005, Lot 6, Cooper Heights Subdivision, Unit 5, Geo. #181421-005-0006, a tract in the East side of Lot 136, Jones-Mabry Subdivision, Unit 2, Geo. #181421-011-

0210, a tract in Lot 136, Jones-Mabry Subdivision, Unit 2, Geo. #181421-011-0211, the West 57.56 ft. of East 177.27 ft. of Lot 178, Jones-Mabry Subdivision, Unit 2, Geo. #181421-011-0217, the West 77.53 ft. of Lot 180 and the East 56.77 ft. of Lot 181, Jones-Mabry Subdivision, Unit 2, Geo. #181421-011-0222, the West 150.55 ft. as measured on the South line of Lot 181, Jones-Mabry Subdivision, Unit 2, Geo. #181421-011-0224, the East 53.3 ft. as measured on street of Lot 136, Jones-Mabry Subdivision, Unit 2, less tract off East side, Geo. #181421-011-0232, Lot 3, Whittaker Park Subdivision, Geo. #181421-012-0003, Lot 4, Whittaker Park Subdivision, Geo. #181421-012-0004, Lot 5, Whittaker Park Subdivision, Geo. #181421-012-0005, Lot 4, White Hills Acres Subdivision, Geo. #181421-015-0004, Lot 5, White Hills Acres Subdivision, Geo. #181421-015-0005, Lot 7, White Hills Acres Subdivision, Geo. #181421-015-0007, Lot 8, White Hills Acres Subdivision, Geo. #181421-015-0008, Lot 22-A, Cynthia Dale Park Subdivision, Geo. #181421-017-0022, the South 40 ft. of North 85 ft. of Lot 141, Jones-Mabry Subdivision, Unit 2, Geo. #181421-018-0222, a tract in Lot 146, Jones-Mabry Subdivision, Unit 2, Geo. #181421-018-0226, the West 40 ft. of North 125 ft. of Lot 153, Jones-Mabry Subdivision, Unit 2, Geo. #181421-018-0228, the East 132 ft. of North 45 ft. of Lot 141, Jones-Mabry Subdivision, Unit 2, Geo. #181421-018-0237, a tract in Lot 146, Jones-Mabry Subdivision, Unit 2, Geo. #181421-018-0244, the East 117 ft. of South 180 ft. of Lot 143, Jones-Mabry Subdivision, Unit 2, Geo. #181421-018-0265, the West 50 ft. of East 100 ft. of North 150 ft. of Lot 143, Jones-Mabry Subdivision, Unit 2, Geo. #181421-018-0267, the East 50 ft. of West 235 ft. of North 150 ft. of South 175 ft. of Lot 164, Jones-Mabry Subdivision, Unit 2, Geo. #181421-018-0273, the West 49 ft. of South 162 ft. of North 180 ft. of Lot 174 and the East 1 ft. of South 162 ft. of North 180 ft. of Lot 175, Jones-Mabry Subdivision, Unit 2, Geo. #181421-018-0277, the North 165 ft. of West 139 ft. of Lot 166, Jones-Mabry Subdivision, Unit 2, Geo. #181421-018-0297, the East 46.33 ft. of West 92.66 ft. of South 165 ft. of Lot 166, Jones-Mabry Subdivision, Unit 2, Geo. #181421-018-0299, the South 100 ft. of North 255 ft. of West 300 ft. of East 493.6 of Lot 190, Jones-Mabry Subdivision, Unit 2, Geo. #181421-018-0305, the East 132 ft. of North 255 ft. and the East 29 ft. of South 175 of Lot 164, Jones-Mabry Subdivision, Unit 2, Geo. #181421-018-0324, Lot 153, Jones-Mabry Subdivision, Unit 2, less the West 40 ft. of North 125 ft. and less the West 200 ft. of South 125 thereof, Geo. #181421-018-0335, Lot 2, J. R. Russell Subdivision, Unit 1, Geo. #181421-019-0002, Lot 3, J. R. Russell Subdivision, Unit 1, Geo. #181421-019-0003, Lot 8, J. R. Russell Subdivision, Unit 1, Geo. #181421-019-0008, Lot 9, , Lot 10, J. R. Russell Subdivision, Unit 1, Geo. #181421-019-0010, Lot 26, J. R. Russell Subdivision, Unit 1, Geo. #181421-019-0026, Lot 28, J. R. Russell Subdivision, Unit 1, Geo. #181421-019-0028, the East 25.3 ft. of Lot 6, J. R. Russell Subdivision, Unit 1, Geo. #181421-019-0052, Lot 7 and West 25 ft. of Lot 6, J. R. Russell Subdivision, Unit 1, Geo. #181421-019-0058, Lot 25, J. R. Russell Subdivision, Unit 1, Geo. #181421-019-0090, Lot 23, J. R. Russell Subdivision, Unit 1, Geo. #181421-019-0092, Lot 46, J. R. Russell Subdivision, Unit 1, Geo. #181421-019-0096, Lot 24, J. R. Russell Subdivision, Unit 1, Geo. #181421-019-0100, Lot 22, J. R. Russell Subdivision, Unit 1, Geo. #181421-019-0102, Lot 53, J. R. Russell



Subdivision, Unit 1, Geo. #181421-020-0053, the South 10 ft. of West 10 ft. of Lot 6, Cutliff Subdivision, Geo. #181421-021-0022, the West 20 ft. of Lot 11 and the East 24 ft. of Lot 12, Cutliff Subdivision, Geo. #181421-021-0024, the East 44 ft. of Lot 20, Cutliff Subdivision, Geo. #181421-021-0029, Lot 119, J. R. Russell Subdivision, Unit 2, Geo. #181421-022-0119, Lot 134, J. R. Russell Subdivision, Unit 2, Geo. #181421-022-0134, Lot 135, J. R. Russell Subdivision, Unit 2, Geo. #181421-022-0135, Lot 136, J. R. Russell Subdivision, Unit 2, Geo. #181421-022-0136, that part of Lot 138 lying Northwest of I-220, J. R. Russell Subdivision, Unit 2, Geo. #181421-022-0145, that part of Lots 111, 112 and 113 lying Northwesterly of I-220, J. R. Russell Subdivision, Unit 2, Geo. #181421-022-0146, Lot 1, Tiner Subdivision, Geo. #181421-023-0001, Lot 3, Tiner Subdivision, Geo. #181421-023-0001, Lot 4, Tiner Subdivision, Geo. #181421-023-0004, Lot 5, Tiner Subdivision, Geo. #181421-023-0005, Lot 6, Tiner Subdivision, Geo. #181421-023-0006, Lot 1, J. R. Russell Subdivision, Unit 3, Geo. #181421-025-0001, Lot 2, J. R. Russell Subdivision, Unit 3, Geo. #181421-025-0002, Lot 3, J. R. Russell Subdivision, Unit 3, Geo. #181421-025-0003, Lot 4, J. R. Russell Subdivision, Unit 3, Geo. #181421-025-0004, Lot 5, J. R. Russell Subdivision, Unit 3, Geo. #181421-025-0005, that part of Lots 6, 7 and 8 lying Northwesterly of I-220, J. R. Russell Subdivision, Unit 3, Geo. #181421-025-0023, that part of Lots 18 and 19 lying Northwesterly of I-220, J. R. Russell Subdivision, Unit 3, Geo. #181421-025-0024, Lots 20 and 21, J. R. Russell Subdivision, Unit 3, Geo. #181421-025-0025, Lots 33 and 34, Lincoln Memorial Subdivision, Geo. #181421-032-0033, , Lot 87, Lincoln Memorial Subdivision, Geo. #181421-032-0087Lot 93, Lincoln Memorial Subdivision, Geo. #181421-032-0093, Lot 102, Lincoln Memorial Subdivision, Geo. #181421-032-0102, Lot 103, Lincoln Memorial Subdivision, Geo. #181421-032-0103, Lot 105 Lincoln Memorial Subdivision, Geo. #181421-032-0105, Lot 108, Lincoln Memorial Subdivision, Geo. #181421-032-0108, Lot 109 Lot 110, Lincoln Memorial Subdivision, Geo. #181421-032-0110, Lot 128, Lincoln Memorial Subdivision, Geo. #181421-032-0128, Lot 129, Lincoln Memorial Subdivision, Geo. #181421-032-0129, Lot 130, Lincoln Memorial Subdivision, Geo. #181421-032-0130Lot 134 and 135, Lincoln Memorial Subdivision, Geo. #181421-032-0134, Lot 148, Lincoln Memorial Subdivision, Geo. #181421-032-0148, Lot 149, Lincoln Memorial Subdivision, Geo. #181421-032-0149, Lot 152, Lincoln Memorial Subdivision, Geo. #181421-032-0152, Lot 160, Lincoln Memorial Subdivision, Geo. #181421-032-0160, Lot 161, Lincoln Memorial Subdivision, Geo. #181421-032-0161, Lot 168, Lincoln Memorial Subdivision, Geo. #181421-032-0168, Lot 169, Lincoln Memorial Subdivision, Geo. #181421-032-0169, Lot 172, Lincoln Memorial Subdivision, Geo. #181421-032-0172, Lot 179, Lincoln Memorial Subdivision, Geo. #181421-032-0179, Lot 181, Lincoln Memorial Subdivision, Geo. #181421-032-0181, Lot 192, Lincoln Memorial Subdivision, Geo. #181421-032-0192, the North 40 ft. of Lot 56, Lincoln Memorial Subdivision, Geo. #181421-032-0215, South 40 ft. of Lot 96, Lincoln Memorial Subdivision, Geo. #181421-032-0226, the North 40 ft. of Lot 123, Lincoln Memorial Subdivision, Geo. #181421-032-0229, the South 45 ft. of Lot 43, Lincoln Memorial Subdivision, Geo. #181421-032-0236, Lots 106 and 107, Lincoln Memorial Subdivision, Geo. #181421-032-0241, Lots 24 and 25, Lincoln Memorial Subdivision, Geo. #181421-032-0242, Lots 31 and 32, Lincoln Memorial Subdivision, Geo. #181421-032-0245, Lots 141 and 142,

Lincoln Memorial Subdivision, Geo. #181421-032-0249, Lot 68, Carver Heights Subdivision, Unit #2, Geo. #181421-033-0068, Lot 69, Carver Heights Subdivision, Unit #2, Geo. #181421-033-0069, Lot 70, Carver Heights Subdivision, Unit #2, Geo. #181421-033-0070, Lot 71, Carver Heights Subdivision, Unit #2, Geo. #181421-033-0071, Lot 81, Carver Heights Subdivision, Unit #2, Geo. #181421-033-0081, Lot 96, Carver Heights Subdivision, Unit #2, Geo. #181421-033-0096, Lot 126, Carver Heights Subdivision, Unit #2, Geo. #181421-033-0126, Lot 209, Carver Heights Subdivision, Unit #2, Geo. #181421-033-0209, , Lot 223, Carver Heights Subdivision, Unit #2, Geo. #181421-033-0223, the South 10 ft. of Lot 77, Carver Heights Subdivision, Unit #2, Geo. #181421-033-0229, Lot 26, Carver Heights Subdivision, Unit #2, Geo. #181421-034-0026, Lot 32, Carver Heights Subdivision, Unit #2, Geo. #181421-034-0032, Lot 109, Carver Heights Subdivision, Unit #2, Geo. #181421-034-0109, Lot 199, Carver Heights Subdivision, Unit #2, Geo. #181421-034-0199, the North 40 ft. of Lot 103, Carver Heights Subdivision, Unit #2, Geo. #181421-034-0205, the South 20 ft. of Lot 103 and the North 20 ft. of Lot 104, Carver Heights Subdivision, Unit #2, Geo. #181421-034-0206, the Easterly 20 ft. of Lot 191 and Westerly 20 ft. of Lot 192, Carver Heights Subdivision, Unit #2, Geo. #181421-034-0209, the Easterly 40 ft. of Lot 192, Carver Heights Subdivision, Unit #2, Geo. #181421-034-0210, the South 40 ft. of Lot 171, Carver Heights Subdivision, Unit #2, Geo. #181421-034-0215, Lot 7, Good Friend Subdivision, Geo. #181421-035-0007, Lot 15, Good Friend Subdivision, Geo. #181421-035-0015, Lot 17, Good Friend Subdivision, Geo. #181421-035-0017, Lot 28, Good Friend Subdivision, Geo. #181421-035-0028, Lot 29, Good Friend Subdivision, Geo. #181421-035-0029, Lot 30, Good Friend Subdivision, Geo. #181421-035-0030, Lot 32, Good Friend Subdivision, Geo. #181421-035-0032, Lots 49 and 50, Good Friend Subdivision, Geo. #181421-035-0049, Lot 51, Good Friend Subdivision, Geo. #181421-035-0051, Lot 54, Good Friend Subdivision, Geo. #181421-035-0054, Lot 55, Good Friend Subdivision, Geo. #181421-035-0055, Lot 57, Good Friend Subdivision, Geo. #181421-035-0057, Lot 68, Good Friend Subdivision, Geo. #181421-035-0068, Lot 72, Good Friend Subdivision, Geo. #181421-035-0072, Lot 76, Good Friend Subdivision, Geo. #181421-035-0076, Lot 79, Good Friend Subdivision, Geo. #181421-035-0079, Lot 80, Good Friend Subdivision, Geo. #181421-035-0080, Lot 32, Land of Nod Subdivision, Geo. #181421-038-0032, Lot 112, Land of Nod Subdivision, Geo. #181421-038-0112, Lot 11, Land of Nod Subdivision, Geo. #181421-039-0011, Lot 12, Land of Nod Subdivision, Geo. #181421-039-0012, Lot 13, Land of Nod Subdivision, Geo. #181421-039-0013, Lot 15, Land of Nod Subdivision, Geo. #181421-039-0015, Lot 29, Land of Nod Subdivision, Geo. #181421-039-0029, Lot 30, Land of Nod Subdivision, Geo. #181421-039-0030, Lot 111, Land of Nod Subdivision, Geo. #181421-039-0111, Lots 174 and 175, Carver Heights Subdivision, Unit #2, Geo. #181421-034-0219, above described property containing a total of 38.32 gross acres and 19.16 net acres all situated within Section 16, Township 18 North, Range 14 West, Caddo Parish, Louisiana.

The total acreage of the above described properties is **106.33 gross** acres and **53.16 net acres**, all as more particularly outlined on a plat on file in the Office of Mineral Resources, Department of Natural Resources. The

description is based on information provided by the State Agency regarding location and ownership of surface and mineral rights. All bearings, distances and coordinates, if applicable, are based on Louisiana Coordinate System of 1927, (North or South Zone).

NOTE: The above description of the Tract nominated for lease has been provided and corrected, where required, exclusively by the nomination party. Any mineral lease selected from this Tract and awarded by the Louisiana State Mineral and Energy Board shall be without warranty of any kind, either express, implied, or statutory, including, but not limited to, the implied warranties of merchantability and fitness for a particular purpose. Should the mineral lease awarded by the Louisiana State Mineral and Energy Board be subsequently modified, cancelled or abrogated due to the existence of conflicting leases, operating agreements, private claims or other future obligations or conditions which may affect all or any portion of the leased Tract, it shall not relieve the Lessee of the obligation to pay any bonus due thereon to the Louisiana State Mineral and Energy Board, nor shall the Louisiana State Mineral and Energy Board be obligated to refund any consideration paid by the Lessor prior to such modification, cancellation, or abrogation, including, but not limited to, bonuses, rentals and royalties.

NOTE: Lessee, it's successors or assigns, may produce oil, gas and other minerals from the leased premises by drilling from a surface location on other lands, but notwithstanding any other provision of this lease, Lessee, it's successors or assigns, shall not use the surface of the Lessor's property for drilling or any other operations without prior written permission of Lessor, which permission may be withheld at Lessor's discretion.

NOTE: Notwithstanding anything to the contrary herein contained, at the end of the primary term or any extension thereof by operations, if the Commission of Conservation of the State of Louisiana establishes a drilling unit which included a part of the land herein leased, the production of oil, gas and other minerals from such unit shall maintain this lease in full force and effect only as to such portions of the leased land embraced in said pooled unit; and this lease shall expire as to that part of the land herein leased not included in such unit; and lessee, its successors and assigns agrees to relinquish by formal instrument any portion of the leased land not included in a unit created by the Commission of Conservation while this lease is in effect.

NOTE: Upon the expiration of the primary term hereof or any extension thereof by operations, this lease shall automatically terminate and be of no further force or effect except as to all that part of the leased premises then included within the geographical boundaries of a producing unit duly established by governmental agency or authority having jurisdiction, from the surface of the earth to a depth of 100 feet below the deepest depth from which any well commenced during the primary term hereof on the leased premises or on lands pooled therewith is completed and from which there is

production in paying quantities, such depth determination to be made on a unit by unit basis. In the absence of units so established, this lease shall terminate except as to 40 acres around each producing oil well and 160 acres around each producing or shut-in gas well located on the leased premises, in as near the form of a square as is practicable, from the surface of the earth down to a depth of 100 feet below the deepest depth from which said well or wells are completed and from which there is production in paying quantities, such depth determination to be made on a well by well basis.

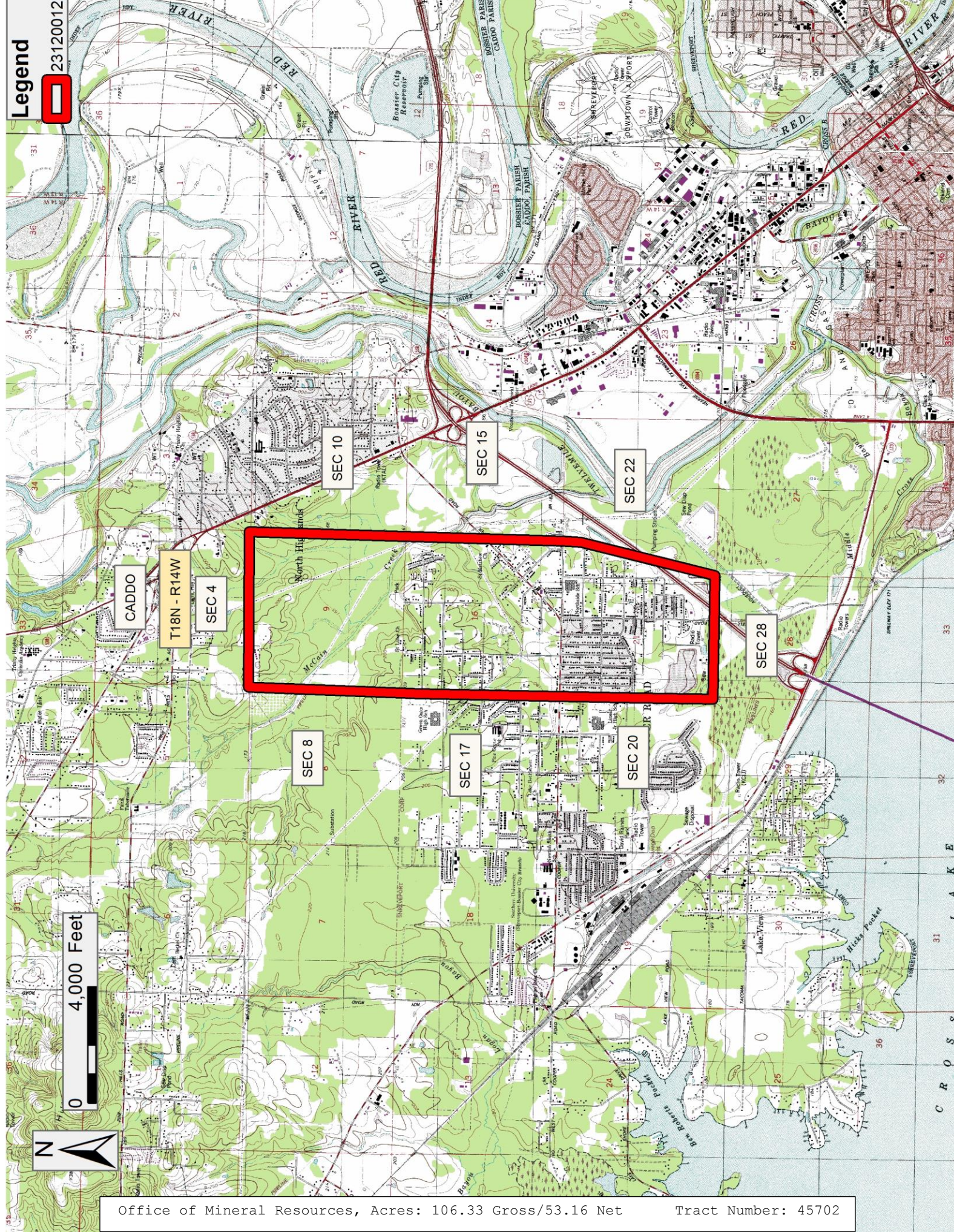
NOTE: The Caddo Parish Commission will require a minimum bonus of \$3,000.00 per acre and a minimum royalty of not less than 1/4th or 25%.

NOTE: The Caddo Parish Commission maintains fifty percent (50%) ownership of mineral rights only.

Applicant: CYPRESS ENERGY PARTNERS, LLC to Agency and by Resolution from the Caddo Parish Commission authorizing the Mineral Board to act in its behalf

Bidder	Cash Payment	Price/ Acre	Rental	Oil	Gas	Other







**TRACT 45703 - Caddo Parish, Louisiana**

A certain Tract of land, excluding the beds and bottoms of all navigable waters, belonging to and not presently under mineral lease from Caddo Parish Commission on December 13, 2023, being more fully described as follows: Those certain adjudicated properties located in Section 9, Township 18 North, Range 14 West, described as the North 208.71 ft. of East 417.42 ft. of West 861 ft. of Lot 4, Geo. #18109 000 0067, said adjudicated property total acreage being 2.04 acres, more or less, and that certain property owned by the Parish of Caddo described as 5.565 acres, more or less, a tract of land in Gov't. Lot 16, Section 9 18 14, Geo. #181409 000 0044, containing 5.71 acres, said Parish of Caddo owned property being a total of 5.71 acres, with Section 9, T18N, R14W containing a total of 7.75 acres, more or less, all in Caddo Parish, Louisiana.

Those certain adjudicated properties located in Section 16, Township 18 North, Range 14 West, described as the the Southeasterly 90 ft. of Northeasterly 110 ft. of Lot 12, Jones Mabry subdivision less ROW, Geo. #181416 001 0193, a tract in Lot 50, Jones Mabry subdivision, Geo. #181416 001 0198 the Southeasterly 100 ft. of Southwesterly 150 ft. of Northeasterly 180 ft. of Lot 25, Jones Mabry subdivision, Geo. #181416 001 0230, Northwesterly 55.83 ft. of Northeasterly 114.63 ft. of Lot 6, Jones Mabry subdivision, Geo. #181416 001 0270, the Southeasterly 60 ft. of Northwesterly 105 ft. of Southwesterly 150 ft. of Lot 25, Jones Mabry subdivision, Geo. #181416 001 0302, the Southeasterly 50 ft. of Northwesterly 190 ft. of Southwesterly 110 ft. of Lot 16, Jones Mabry subdivision, Geo. #181416 001 0341 a tract of land in Lots 39 AND 40, Jones Mabry subdivision, Geo. #181416 001 0364, a tract in Lot 4, Jones Mabry subdivision, Geo. #181416 001 0381, the Northeasterly 50 ft. of Southwesterly 110 ft. of Southeasterly 120 ft. of Northwesterly 140 ft. of Lot 16, Jones Mabry subdivision, Geo. #181416 001 0431, the Easterly 50 ft. of Lot 16, Jones Mabry subdivision, less 20 ft. off front for road, Geo. #181416 001 0433, a tract of land in Lot 4, Jones Mabry subdivision, Geo. #181416 001 0452, the East 28 ft. of South 60 ft. of West 1 acre of Lot 39, Jones Mabry subdivision, Geo. #181416 001 0473, Lot 13, Schoolside subdivision, 181416 002 0013, Lot G, Montana Park subdivision, 181416 007 0023, Lot F, Jarman subdivision, 181416 010 0006, Geo # 181416012026700 , The N. 40 Ft Of S. 160 Ft Of W. 120.0 Ft Lot 222 jones Mabry Subn., Unit 3, Geo # 181416012027500, The W/2 Of Lot 224, Jones Mabry Subn., Unit #3, Geo # 181416014028700, The E. 56.7 Ft Of W. 111.5 Ft Of N. 125 Ft Of Lot 252, Jones Mabry Sub, Unit 3. Geo # 181416014028800, The West 45 Ft. Of E. 107.5 Ft. Of North 125 Ft. Of lot 252 Jones Mabry Sub. Unit 3, Geo # 181416014031200, The W. 124 Ft Of N/2 Of Lot 248, Jones Mabry sub 3, Geo # 181416017032700, The W. 44 Ft Of S. 165 Ft Of Lot 258 Jones Mabry Sub unit 3, Geo # 181416017033000, The West 88 Ft Of Lot 290, Jones Mabry Sub unit #3 Geo # 181416019000600, Lot 6, Millen And Dodson Subn. Geo #, Geo # 181416019001300, Lot 13, Millen AND Dodson Sub, Geo # 181416021000100, Lot A, Moss Park Sub., Geo # 181416023000100, Lot 1 A, Steven Israel Sub., Unit #2, Geo # 181416024029800, The W/2 Of Lot 285, Jones Mabry Sub Unit 3, Unit 3, Geo # 181416029034100, The E/2 Of W/2 Of Lot 317, Jones Mabry Sub 3, Geo # 181416029035300, The East 12 Ft Of West 84.86 Ft Of

South 97 ft Of Lot 322, Jones Mabry Sub 3, Geo # 181416029035600, The E/2 Of E/2 Of Lot 297, Jones Mabry Sub, Unit 3, Geo # 181416029036200, The West 44 Ft. Of East 88 Ft. Of North 160 Ft. Of lot 317, Jones Mabry Sub., Unit #, Geo # 181416029039000, The S. 55 Ft. Of N. 110 Ft. Of E/2 Of Lot 298 jones Mabry Sub., Unit #3, Geo # 181416030000300, Lot 3, Cooper Hills Subn,. Geo # 181416035037100, The E/2 Of Lot 302, Less E. 77.5 Ft Of S. 120 Ft, thereof, Jones Mabry Sub, Unit 3 Geo # 181416035037900, The S. 160 Ft Of N. 165 Ft Of W. 57.84 Ft Of E. 60, ft Of Lot 299, Jones Mabry Sub., Unit #3, Geo # 181416046001200, Lot 12, Bunche Sub., Unit #1, Geo # 181416046001600, Geo # 181416047002900, Lots 29, 30 AND 31, Bunche Subn. Unit 2, Geo # 181416053000500, Lot 5, Longline Sub, Geo # 181416056001000, Lot 10, Mc Cain Creek Estates, Unit #1, Geo # 181416061000600, Lot 6, Crawford Park, Geo # 181416061001500, Lot 15, Crawford Park, The S. 151.64 Ft. Of Lot 4, Crawford Park, Geo # 181416061002100, The S. 151.64 Ft. Of Lot 5, Crawford Park. Geo # 181416 001 0334, N. 217.8 ft. of Lot 45 less N. 50 ft. of E. 130 ft. AND less S. 50 ft. of E. 130 ft., Jones Mabry Sub., Geo # 181416 001 0334, Lot C, Griffin Oaks Sub., Unit 2, 181416 43 3. Said adjudicated property total acreage being 14.90 acres, more or less, and that certain property owned by the Parish of Caddo described as Lot B, Thelma Subdivision Replat less the North 5 ft. of the West 12.3 ft. and less the North 5 ft. of the East 74.7 ft. thereof and less triangular tract in Southwest Corner for ROW, Section 16 18 14, Geo. #181416 055 0005, containing .74 acres, and Lot C, Thelma Subdivision Replat less the North 5 ft. thereof, Section 16 18 14, Geo. #181416 055 0006, containing .88 acres, said Parish of Caddo owned property being a total of 1.62 acres, with Section 16, T18N, R14W containing a total of 16.52 acres, more or less, all in Caddo Parish, Louisiana.

Those certain adjudicated properties located in Section 21, Township 18 North, Range 14 West, described as the, the North 40 ft. of West Half of Lot 83, Jones Mabry Subdivision, Unit 2, Geo. #18121 001 0186, the North 120 ft. of West 40 ft. of East 80 ft. of Lot 95, Jones Mabry Subdivision, Unit 2, Geo. #181421 001 0210, the South 80 ft. of East 165 ft. of Lot 119, Jones Mabry Subdivision, Unit 2, Geo. #18121 001 0241, the South 50 ft. of Lot 114 and the South 50 ft. of East 99 of of Lot 113, Jones Mabry Subdivision, Unit 2, Geo. #18121 001 0282, the South 135 ft. of North 280 ft. of East 40 ft. of West 73 of Lot 113, Jones Mabry Subdivision, Unit 2, Geo. #181421 001 0289, the North 27 ft. of South 127 ft. of West 50 ft. of East 100 of Lot 108, Jones Mabry Subdivision, Unit 2, Geo. #181421 001 0295, the North 10 ft. of Lot 133 and the North 10 ft. of East 99 ft. of Lot 134, Jones Mabry Subdivision, Unit 2, Geo. #181421 001 0305, , the South 60 ft. of East 120 ft. of West Half of Lot 118, Jones Mabry Subdivision, Unit 2, Geo. #18121 001 0320, the West Half of Lot 118, Less the East 120 ft. of North 150 ft. and Less the South 60 ft. of East 120 ft. Jones Mabry Subdivision, Unit 2, Geo. #18121 001 0321, the East 120 ft. of North 50 ft. of South 130 ft. of Lot 119, Jones Mabry Subdivision, Unit 2, Geo. #181421 001 0322, the East 77 ft. of North 130 ft. of Lot 114, Jones Mabry Subdivision, Unit 2, Geo. #181421 001 0360, the Easterly 50 ft. of Westerly 100 ft. of Southerly 200 ft. of the East 236 ft. of Lot 116, Jones Mabry Subdivision, Unit 2, Geo. #181421 001 0366, the East Half of Lot 69 and West Half of Lot 70, Less the

North 125 ft. of East 100 ft. of the West Half of Lot 70, Jones Mabry Subdivision, Unit 2, Geo. #181421 001 0378, the East 40 ft. of West 132 ft. of North 120 ft. of Lot 121, Jones Mabry Subdivision, Unit 2, Geo. #181421 001 0409, Lot 184 and West Half of Lot 185, Jones Mabry Subdivision, Unit 2, Geo. #181421 011 0184, the East 65.22 ft. of South 250 ft. of Lot 178 and West 10.75 ft. of South 250 ft. of Lot 177, Jones Mabry Subdivision, Unit 2, Geo. #181421 011 0215, the East 2 ft. of West 12.75 ft. of West 86.72 ft. of South 250 ft. of Lot 177, Jones Mabry Subdivision, Unit 2, Geo. #181421 011 0246, Lot 7, Whittaker Park Subdivision, Geo. #181421 012 0007, Lot 3 A, Cynthia Dale Park Subdivision, Geo. #181421 017 0003, , the West Half of Lot 142, Jones Mabry Subdivision, Unit 2, Geo. #181421 018 0203, the West 100 ft. of East 125 ft. of Lot 166, Jones Mabry Subdivision, Unit 2, Geo. #181421 018 0241, the East 50 ft. of North 150 ft. of Lot 143, Jones Mabry Subdivision, Unit 2, Geo. #181421 018 0254, the East 132 ft. of West 147 ft. of South 45 ft. of Lot 143, Jones Mabry Subdivision, Unit 2, Geo. #181421 018 0270, the South 180 ft. of Lot 147 and all of Lot 148 less the North 150 ft. of West 98 ft. thereof, Jones Mabry Subdivision, Unit 2, Geo. #181421 018 0282, the South 119 ft. of West Half of Lot 176, Jones Mabry Subdivision, Unit 2, Geo. #181421 018 0314, that part of Lot 190 lying Northwesterly of I 220 and South of J. R. Russell Subdivision, Unit 3, Geo. #181421 018 0326, Lot 9, J. R. Russell Subdivision, Unit 1, Geo. #181421 019 0009, Lots 12 and 13, J. R. Russell Subdivision, Unit 1, Geo. #181421 019 0012, Lot 27, J. R. Russell Subdivision, Unit 1, Geo. #181421 019 0027, Lot 29, J. R. Russell Subdivision, Unit 1, Geo. #181421 019 0029, Lot 30, J. R. Russell Subdivision, Unit 1, Geo. #181421 019 0030, Lot 36, J. R. Russell Subdivision, Unit 1, Geo. #181421 019 0036, Lot 32, J. R. Russell Subdivision, Unit 1, Geo. #181421 019 0077, Lot 33, J. R. Russell Subdivision, Unit 1, Geo. #181421 019 0081, Lot 22, Lincoln Memorial Subdivision, Geo. #181421 032 0022, Lot 26, Lincoln Memorial Subdivision, Geo. #181421 032 0026, Lot 69, Lincoln Memorial Subdivision, Geo. #181421 032 0069, Lot 89, Lincoln Memorial Subdivision, Geo. #181421 032 0089, Lot 109, Lincoln Memorial Subdivision, Geo. #181421 032 0109, Lot 124, Lincoln Memorial Subdivision, Geo. #181421 032 0124, Lot 132, Lincoln Memorial Subdivision, Geo. #181421 032 0132, Lot 133, Lincoln Memorial Subdivision, Geo. #181421 032 0133 Lot 160, Lincoln Memorial Subdivision, Geo. #181421 032 0160, Lot 176, Lincoln Memorial Subdivision, Geo. #181421 032 0176 , South 40 ft. of Lot 47, Lincoln Memorial Subdivision, Geo. #181421 032 0231, North 40 ft. of Lot 113, Lincoln Memorial Subdivision, Geo. #181421 032 0234, Lots 36 and 37, Lincoln Memorial Subdivision, Geo. #181421 032 0246, Lots 194 and 195, Lincoln Memorial Subdivision, Geo. #181421 032 0248, Lot 90, Carver Heights Subdivision, Unit #2, Geo. #181421 033 0090, Lot 127, Carver Heights Subdivision, Unit #2, Geo. #181421 033 0127, Lot 130, Carver Heights Subdivision, Unit #2, Geo. #181421 033 0130, Lot 132, Carver Heights Subdivision, Unit #2, Geo. #181421 033 0132, Lot 162, Carver Heights Subdivision, Unit #2, Geo. #181421 033 0162, Lot 208, Carver Heights Subdivision, Unit #2, Geo. #181421 033 0208, 218, Carver Heights Subdivision, Unit #2, Geo. #181421 033 0218, Lot 219, Carver Heights Subdivision, Unit #2, Geo. #181421 033 0219, Lot 105, Carver Heights Subdivision, Unit #2, Geo. #181421 034 0105, Lots 185 and 186, Carver Heights Subdivision, Unit



#2, Geo. #181421 034 0185, Lot 200, Carver Heights Subdivision, Unit #2, Geo. #181421 034 0200, the Lot 16, Good Friend Subdivision, Geo. #181421 035 0016, Lot 31, Good Friend Subdivision, Geo. #181421 035 0031, Lot 33, Good Friend Subdivision, Geo. #181421 035 0033, Lot 42, Good Friend Subdivision, Geo. #181421 035 0042, Lot 43, Good Friend Subdivision, Geo. #181421 035 0043, Lot 48, Good Friend Subdivision, Geo. #181421 035 0048, , Lot 56, Good Friend Subdivision, Geo. #181421 035 0056, said adjudicated property total acreage being 23.12 acres, more or less, with Section 21, T18N, R14W, all in Caddo Parish, Louisiana The total acreage of the above described properties is **47.39 acres**, all as more particularly outlined on a plat on file in the Office of Mineral Resources, Department of Natural Resources. The description is based on information provided by the State Agency regarding location and ownership of surface and mineral rights. All bearings, distances and coordinates, if applicable, are based on Louisiana Coordinate System of 1927, (North or South Zone).

NOTE: The above description of the Tract nominated for lease has been provided and corrected, where required, exclusively by the nomination party. Any mineral lease selected from this Tract and awarded by the Louisiana State Mineral and Energy Board shall be without warranty of any kind, either express, implied, or statutory, including, but not limited to, the implied warranties of merchantability and fitness for a particular purpose. Should the mineral lease awarded by the Louisiana State Mineral and Energy Board be subsequently modified, cancelled or abrogated due to the existence of conflicting leases, operating agreements, private claims or other future obligations or conditions which may affect all or any portion of the leased Tract, it shall not relieve the Lessee of the obligation to pay any bonus due thereon to the Louisiana State Mineral and Energy Board, nor shall the Louisiana State Mineral and Energy Board be obligated to refund any consideration paid by the Lessor prior to such modification, cancellation, or abrogation, including, but not limited to, bonuses, rentals and royalties.

NOTE: Lessee, it's successors or assigns, may produce oil, gas and other minerals from the leased premises by drilling from a surface location on other lands, but notwithstanding any other provision of this lease, Lessee, it's successors or assigns, shall not use the surface of the Lessor's property for drilling or any other operations without prior written permission of Lessor, which permission may be withheld at Lessor's discretion.

NOTE: Notwithstanding anything to the contrary herein contained, at the end of the primary term or any extension thereof by operations, if the Commission of Conservation of the State of Louisiana establishes a drilling unit which included a part of the land herein leased, the production of oil, gas and other minerals from such unit shall maintain this lease in full force and effect only as to such portions of the leased land embraced in said pooled unit; and this lease shall expire as to that part of the land herein leased not included in such unit; and lessee, its successors and assigns agrees to relinquish by formal instrument any portion of the leased land not included

in a unit created by the Commission of Conservation while this lease is in effect.

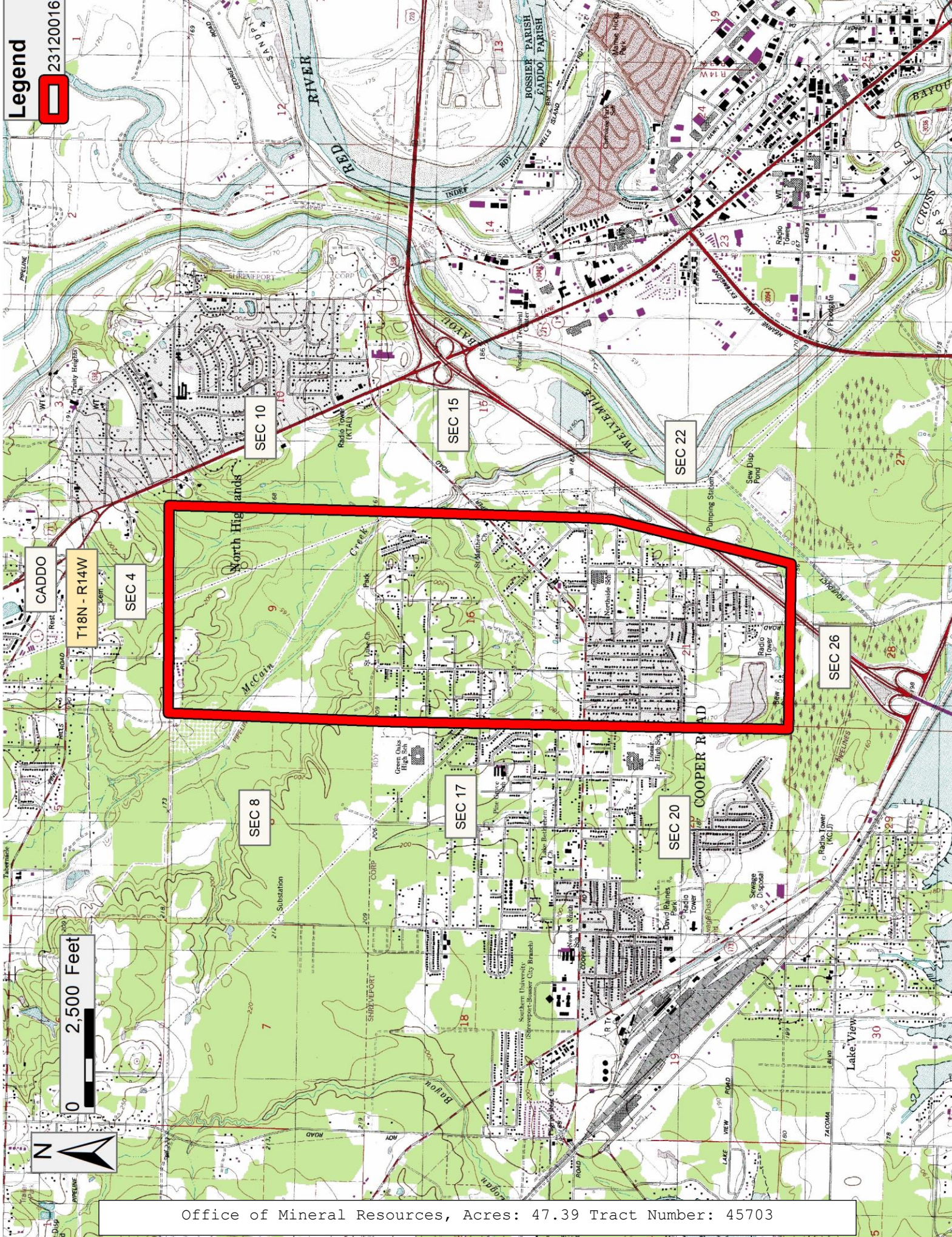
NOTE: Upon the expiration of the primary term hereof or any extension thereof by operations, this lease shall automatically terminate and be of no further force or effect except as to all that part of the leased premises then included within the geographical boundaries of a producing unit duly established by governmental agency or authority having jurisdiction, from the surface of the earth to a depth of 100 feet below the deepest depth from which any well commenced during the primary term hereof on the leased premises or on lands pooled therewith is completed and from which there is production in paying quantities, such depth determination to be made on a unit by unit basis. In the absence of units so established, this lease shall terminate except as to 40 acres around each producing oil well and 160 acres around each producing or shut-in gas well located on the leased premises, in as near the form of a square as is practicable, from the surface of the earth down to a depth of 100 feet below the deepest depth from which said well or wells are completed and from which there is production in paying quantities, such depth determination to be made on a well by well basis.

NOTE: The Caddo Parish Commission will require a minimum bonus of \$3,000.00 per acre and a minimum royalty of not less than 1/4th or 25%.

Applicant: CYPRESS ENERGY PARTNERS, LLC to Agency and by Resolution from the Caddo Parish Commission authorizing the Mineral Board to act in its behalf

Bidder	Cash Payment	Price/ Acre	Rental	Oil	Gas	Other







**TRACT 45704 - Caddo Parish, Louisiana**

A certain Tract of land, excluding the beds and bottoms of all navigable waters, belonging to and not presently under mineral lease from City Of Shreveport on December 13, 2023, being more fully described as follows: CITY ONLY ADJUDICATED TRACTS Sections 16,17,18 AND 21 T18N R14W Those certain City only adjudicated tracts, situated in Sections 16,17,18, AND 21, Township 18 North, Range 14 West, being described as GEO # 181416024031400, W/2 OF LOT 287, JONES MABRY SUBN., UNIT 3; GEO # 181416017030400, West 1/2 OF LOT 276, JONES MABRY SUB., UNIT 3; GEO # 181416035039000, W. 66 FT. OF W/2 OF LOT 313, JONES MABRY SUBN., UNIT #3; GEO # 181416029034300 1/2 ACRE IN THE FORM OF A SQUARE IN NE CORNER OF LOT 325, JONES MABRY SUB. 3; GEO # 181416046002800, LOT 23 W/2 OF LOT 24, BUNCHE SUBN.; GEO # 181416047003400 LOT 34, BUNCHE SUB., UNIT 2; GEO # 181416019000700, LOT 7, MILLEN AND DODSON SUB.; GEO # 181416019000500, LOT 5, MILLEN AND DODSON SUBN.; Geo # 181416017029400, 2.00 acres LOT 272, JONES MABRY SUB., UNIT 3; geo # 181416041000900, LOT 9, FOX SUBN.; GEO # 181416041000800, LOT 8, FOX SUB.; GEO # 181416039000100, LOT A, JONAS NICHOLS SUBN.; GEO # 181416039000500, LOT E, JONAS NICHOLS SUB; GEO # 181416025000200, LOT 2, RE SUBN OF LOT 281, JONES MABRY SUBN., UNIT #3; GEO # 181416052000100, LOT A, ELBERT BELL PARK; GEO # 181416056002000, LOT 20, MC CAIN CREEK ESTATES, UNIT #1; GEO # 181416056002800, LOT 28, MC CAIN CREEK ESTATES, UNIT 1; GEO # 181416022000200, E. 25 FT. OF LOT G, STEVEN ISRAEL SUB.; GEO # 181416008000300, LOT C, THOMAS J. HAWKINS SUB.; GEO # 181416017034600, LOT 273, LESS TRACT DES. IN CB 1320 281, JONES MABRY SUB. UNIT 3; LESS W. 10 FT. THEREOF FOR R/W AND LESS E. 25 FT. OF N. 10 FT. OF E. 244.59 FT. THEREOF TO THE CITY FOR DRAINAGE; GEO # 181416035038100, THE N. 115 FT. OF LOT 299, JONES MABRY SUBN., UNIT #3 LESS THE S. 110 FT. OF N. 115 FT. OF E. 60 FT. OF N. 115 FT. OF LOT 299, JONES MABRY SUBN., UNIT #3 LESS THE S. 110 FT. OF N. 115 FT. OF E. 60 FT. AND LESS THE E. 2.2 FT. OF N. 5 FT. THEREOF. GEO # 181416 35 383 AND S. 5 FT. OF N. 165 FT. OF W. 147.8 FT. OF LOT 300 AND S. 5 FT. OF E. 2.2 FT. OF LOT 299, JONES MABRY SUB., UNIT #3; GEO # 181417055004300, LOT 43, AUDREY PARK SUB. 1/2 ABDN. DRAIN R/W; 181417054001900, LOT 19, AUDREY PARK SUBN.; GEO # 181417029066400, 1 AC. W/2 OF LOT 643, JONES MABRY SUB 10, LESS S. 5 FT FOR ST; GEO # 181417018000600, LOTS C AND D, RE SUB. OF LOTS 425, JONES MABRY SUB., UNIT #7; GEO # 181417013056800, W. 90.09 FT. OF LOT 430, JONES MABRY SUB. UNIT 7; GEO # 181417030066900, W/2 OF LOT 649, LESS DRAINAGE DITCH, JONES MABRY SUBN., UNIT 10; GEO # 181417061000300, LOT 3, BALLARD PARK SUBN., LESS DITCH; GEO # 181417044000400, LOT 4, REESE SUB. 184; GEO # 181417044000200, LOT 2, REESE SUB; GEO # 181417000005200, S. 125 FT. OF W. 6 2/3 acres OF NE/4 OF SE/4, SEC. 17(18 14), LESS W. 111.45 FT. THEREOF, LESS E. 5 FT. FOR R/W; 181417047002400, LOT 24, LEGARDY HILLS SUB., UNIT #1; GEO # 181417003000500, LOT 5, JOSEPH REDD SUBN; GEO # 181417028060200, 1.97 acres LOT 602, JONES MABRY SUB., UNIT 10; GEO # 181417053016300, LOT 163, COOPERVILLE SUBN., UNIT 2; GEO # 181417002000300, LOT 3, JAMES MILES SUBN.; GEO # 181417002000200, LOT 2, JAMES MILES SUBN.; GEO # 181417047004300, LOT 43, LEGARDY HILLS SUB, UNIT 1; GEO # 181417042000400, LOT 4, HERIATAGE SUB.; GEO # 181417013052600, S. 52 FT OF N. 309.46 FT OF LOT 456, JONES MABRY SUB, UNIT 7; GEO # 181417052002600, LOT 26, COOPERVILLE SUBN., UNIT 2; GEO # 181417001036200,



1.456 ACS. M/L S. 132.29 FT. OF THE N. 209.86 FT. OF E. 561.6 FT. OF LOT 349, JONES MABRY SUBN. UNIT #4, LESS R/W; GEO # 181417026001800, LOT 18 A, ALEX LEE PARK, UNIT #1 A; GEO # 181417053009700, LOT 97, COOPERVILLE SUBN., UNIT 2; GEO # 181417050012700, LOT 127, LEGARDY HILLS SUB., UNIT 2; GEO # 181417020000700, LOT 7, NORTON SUB.; GEO # 181418011002600, LOT 26, PRINCE HALL VILLAGE SUB.; GEO # 181418011001200, LOT 12, PRINCE HALL VILLAGE SUBN.; GEO # 181421022007500, LOT 75, J. R. RUSSELL SUB., UNIT #2; GEO # 181421018026300, N. 92 FT. OF W/2 OF LOT 176, JONES MABRY SUBN., UNIT #2, LESS R/W; GEO # 181421035001500, LOT 15, GOOD FRIEND SUBN.; GEO # 181421032017000, LOT 170, LINCOLN MEMORIAL SUB.; GEO # 181421034018400, LOT 184, CARVER HEIGHTS SUBN., UNIT 2; GEO # 181421035006100, LOT 61, GOOD FRIEND SUB.; GEO # 181421032013900, LOTS 139 140, LINCOLN MEMORIAL SUB. 4 IMPS; GEO # 181421032016200, LOT 162, LINCOLN MEMORIAL SUB. W.D.4 S.D.5; GEO # 181421033022200, LOT 222, CARVER HTS. SUB. 2; GEO # 181421032004600, LOT 46, LINCOLN MEMORIAL SUB.; GEO # 181421033020500, LOT 205, CARVER HTS. SUBN., UNIT 2; GEO # 181421032002300, LOT 23, LINCOLN MEMORIAL SUB.; GEO # 181421001023000, 1.00 ACRE E/2 OF LOT 92, JONES MABRY SUB., UNIT 2; GEO # 181421034020300, LOT 203, CARVER HEIGHTS SUBN., UNIT 2; GEO # 181421023000200, LOT 2, TINER SUBN.; GEO # 181421001016700, 1.00 ACRE E/2 OF LOT 96, JONES MABRY SUB., 2; GEO # 181421005000800, LOT 8, COOPER HTS SUB., UNIT #5; GEO # 181421005000700, LOT 7, COOPER HEIGHTS SUB., UNIT #5; GEO # 181421005000100, LOT 1, COOPER HEIGHTS SUB., UNIT #5; GEO # 181421001029100, S. 45 FT. OF N. 190 FT. OF E. 19 FT. OF LOT 113 AND S. 45 FT. OF N. 190 FT. OF LOT 114, JONES MABRY SUB., UNIT 2; GEO # 181421032022400, North 40 FT. OF LOT 95, LINCOLN MEMORIAL SUB.; GEO # 181421034020700, S. 40 FT OF LOT 104, CARVER HTS SUB UNIT 2; GEO # 181421032023200, S. 20 FT. OF LOT 48, AND N. 20 FT. OF LOT 47, LINCOLN MEMORIAL SUB.; GEO # 181421011020300, E/2 OF LOT 185, JONES MABRY SUB, UNIT #2; GEO # 181421018027400, E. 50 FT. OF W. 185 FT. OF N. 150 FT. OF S. 175 FT. OF LOT 164 JONES MABRY SUB., UNIT #2; GEO # 181421019000800, LOT 8, J. R. RUSSELL SUB., UNIT 1; GEO # 181421018031100, S. 162 FT OF THE N. 180 FT OF THE W. 40 FT OF THE E. 65 FT OF LOT 174, JONES MABRY SUB UNIT #2; GEO # 181421018030000, W. 46.33 FT South 165 FT LOT 166 JONES MABRY SUBN., UNIT #2; GEO # 181421019005900, LOTS 14 15, J. R. RUSSELL SUBDIVISION, UNIT NO. 1; GEO # 181416029040000, E. 80 FT. OF S. 80 FT. OF E/2 OF LOT 296, JONES MABRY SUBN., UNIT #3; GEO # 181416061000800, LOT 8, CRAWFORD PARK; GEO # 181416061000900, LOT 9, CRAWFORD PARK; GEO # 181416009025500, 2.72 ACS. M/L LOT 210 AND E. 0.86 acres OF LOT 209, JONES MABRY SUBN., UNIT #3; GEO # 181416024032200, .63 acres W/2 OF LOT 284, LESS THE N. 165 FT. OF THE E. 100 FT., THEREOF; GEO # 181416001014800, S. 0.81 AC OF N. 1.81 ACS LOT 47, JONES MABRY SUB.; GEO # 181417013048400, E. 139.51 FT OF W. 209.51 FT OF LOT 440, JONES MABRY SUB, UNIT 7; GEO # 181421019007300, 0.115 AC. M/L LOT 37, J. R. RUSSELL SUBDIVISION, UNIT NO. 1, LESS I 49 R/W AS DESC. IN INST. #2430285; GEO # 181421029000700, LOT 7, ALINE CIRCLE SUBN.; GEO # 181421039001400, LOT 14, LAND OF NOD SUBN.; GEO # 181421034011900, LOT 119, CARVER HTS SUB, UNIT 2; GEO # 181421038003100, LOT 31, LAND OF NOD SUB; GEO # 181421018019800, E/2 OF LOT 146, JONES MABRY SUB 2. The above described tracts containing 35.6830 Gross acres and 35.6830 Net acres more or less, situated in Sections 16,17,18 AND 21, Township 18 North, Range 14 West, Caddo Parish, Louisiana. ASSESSED TO THE CITY OF SHREVEPORT Sections 16,17,18 AND

21 T18N R14W Those certain tracts assessed to the City of Shreveport, situated in Sections 16,17,18, AND 21, Township 18 North, Range 14 West, being described as GEO # 181416000004600, BEGIN AT THE NW CORNER OF THELMA SUBN., IN SW/4 OF SW/4 OF SW/4 AND RUN N. 95 FT., THENCE E. 322.4 FT., THENCE S. 95 FT. AND THENCE W. 322.4 FT. TO PT. OF BEGIN. IN SEC. 16 (18 14); being the same tract or parcel of land described in Deed #1334932, recorded in the Conveyance Records of the Clerk of Courts office, Caddo Parish, Louisiana. GEO # 181416055000300, N. 5 FT. OF THE W. 12.3 FT. OF LOT B, THELMA SUBN., REPLAT; being the same tract or parcel of land described in Deed #1336776, recorded in the Conveyance Records of the Clerk of Courts office, Caddo Parish, Louisiana. GEO # 181416055000400, N. 5 FT. OF THE E. 74.7 FT. OF LOT B AND THE N. 5 FT. OF LOT C, THELMA SUBN., REPLAT; being the same tract or parcel of land described in Deed #1336776, recorded in the Conveyance Records of the Clerk of Courts office, Caddo Parish, Louisiana. GEO # 181417002000100, LOT 1, JAMES MILES SUBN; being the same tract or parcel of land described in Deed #1334528, recorded in the Conveyance Records of the Clerk of Courts office, Caddo Parish, Louisiana. GEO # 181417013055700, N. 177.28 FT OF S. 302.28 FT OF LOT 461, JONES MABRY SUBN., UNIT 7; being the same tract or parcel of land described in Deed #904660, recorded in the Conveyance Records of the Clerk of Courts office, Caddo Parish, Louisiana. GEO # 181417016000100, LOTS 1, 2, 3, 4, 10, 11, 12, 13, 14, 15, N. 45.2 FT OF LOT 7, S. 31.7 FT OF LOT 8, N. 14.3 FT OF LOT 9, MARY JOE PLACE SUBN.; being the same tract or parcel of land described in Deed #1344775, recorded in the Conveyance Records of the Clerk of Courts office, Caddo Parish, Louisiana. GEO # 181417016001000, LOT 10 MARY JOE PLACE SUBN.; being the same tract or parcel of land described in Deed #2816 653, recorded in the Conveyance Records of the Clerk of Courts office, Caddo Parish, Louisiana. GEO # 181417016001100, NA; being the same tract or parcel of land described in Deed #2816 653 recorded in the Conveyance Records of the Clerk of Courts office, Caddo Parish, Louisiana. GEO # 181417016002200, NA; being the same tract or parcel of land described in Deed #2816 653, recorded in the Conveyance Records of the Clerk of Courts office, Caddo Parish, Louisiana. GEO # 181417028069700, E. 50 FT. OF W. 126.41 FT. OF S. 160 FT. OF LOT 619, JONES MABRY SUBN. UNIT #10; being the same tract or parcel of land described in Deed #1388050, recorded in the Conveyance Records of the Clerk of Courts office, Caddo Parish, Louisiana. GEO # 181417028070000, FROM THE N/E COR. OF LOT 618, RUN S. ALONG W. R/W LINE OF AUDREY LANE 90 FT., RUN THENCE W. 50 FT. TO P.O.B.; THENCE W. 84 FT., THENCE 70 FT., THENCE S. 50 DEG. 11 MIN. 39.9 SEC. E. 109.34 FT. TO P.O.B. JONES MABRY SUBN. UNIT #10; being the same tract or parcel of land described in Deed #1378201, recorded in the Conveyance Records of the Clerk of Courts office, Caddo Parish, Louisiana. GEO # 181417028070200, FROM THE S/E COR. OF LOT 618, RUN N. ALONG W. R/W LINE OF AUDREY LANE A DISTANCE OF 140 FT. TO P.O.B., THENCE N. ALONG W. R/W LINE OF SAID STREET A DISTANCE OF 15.0 FT., THENCE W. 20 FT., THENCE SE'LY TO P.O.B. JONES MABRY SUBN. UNIT #10; being the same tract or parcel of land described in Deed #1379522, recorded in the Conveyance Records of the Clerk of Courts office, Caddo Parish, Louisiana. GEO # 181417051001600, LOT 16, COOPERVILLE SUB., UNIT 1; being the same tract or parcel of land described in Deed #2579380, recorded in the Conveyance Records of the Clerk of Courts

office, Caddo Parish, Louisiana. GEO # 181417051001700, LOT 17, COOPERVILLE SUB., UNIT 1; being the same tract or parcel of land described in Deed #2579381, recorded in the Conveyance Records of the Clerk of Courts office, Caddo Parish, Louisiana. GEO # 181417053012800, LOT 128, COOPERVILLE SUB., UNIT #2; being the same tract or parcel of land described in Deed #4891 167, recorded in the Conveyance Records of the Clerk of Courts office, Caddo Parish, Louisiana. GEO # 181417053013000, LOT 130, COOPERVILLE SUBN., UNIT 2; being the same tract or parcel of land described in Deed #2579382, recorded in the Conveyance Records of the Clerk of Courts office, Caddo Parish, Louisiana. GEO # 181417053013100, LOT 131, COOPERVILLE SUBN., UNIT 2; being the same tract or parcel of land described in Deed #2579383, recorded in the Conveyance Records of the Clerk of Courts office, Caddo Parish, Louisiana. GEO # 181417053013200, LOT 132, COOPERVILLE SUBN., UNIT 2; being the same tract or parcel of land described in Deed #2579384, recorded in the Conveyance Records of the Clerk of Courts office, Caddo Parish, Louisiana. GEO # 181417053014000, LOT 140, COOPERVILLE SUBN., UNIT 2; being the same tract or parcel of land described in Deed #2579385, recorded in the Conveyance Records of the Clerk of Courts office, Caddo Parish, Louisiana. GEO # 181417053014100, LOT 141, COOPERVILLE SUBN., UNIT 2; being the same tract or parcel of land described in Deed #2579387, recorded in the Conveyance Records of the Clerk of Courts office, Caddo Parish, Louisiana. GEO # 181417053014200, LOT 142, COOPERVILLE SUBN., UNIT 2; being the same tract or parcel of land described in Deed #2579338, recorded in the Conveyance Records of the Clerk of Courts office, Caddo Parish, Louisiana. GEO # 181417053014300, LOT 143, COOPERVILLE SUBN., UNIT 2; being the same tract or parcel of land described in Deed #2579390, recorded in the Conveyance Records of the Clerk of Courts office, Caddo Parish, Louisiana. GEO # 181417053014400, LOT 144, COOPERVILLE SUBN., UNIT 2; being the same tract or parcel of land described in Deed #2579392, recorded in the Conveyance Records of the Clerk of Courts office, Caddo Parish, Louisiana. GEO # 181417053014500, LOT 145, COOPERVILLE SUBN., UNIT 2; being the same tract or parcel of land described in Deed #2579393, recorded in the Conveyance Records of the Clerk of Courts office, Caddo Parish, Louisiana. GEO # 181417053014600, LOT 146, COOPERVILLE SUBN., UNIT 2; being the same tract or parcel of land described in Deed #2579394, recorded in the Conveyance Records of the Clerk of Courts office, Caddo Parish, Louisiana. GEO # 181417053014700, LOT 147, COOPERVILLE SUBN., UNIT 2; being the same tract or parcel of land described in Deed #2579396, recorded in the Conveyance Records of the Clerk of Courts office, Caddo Parish, Louisiana. GEO # 181417053014800, LOT 148, COOPERVILLE SUBN., UNIT 2; being the same tract or parcel of land described in Deed #2579397, recorded in the Conveyance Records of the Clerk of Courts office, Caddo Parish, Louisiana. GEO # 181417053014900, LOT 149, COOPERVILLE SUBN., UNIT 2; being the same tract or parcel of land described in Deed #2579399, recorded in the Conveyance Records of the Clerk of Courts office, Caddo Parish, Louisiana. GEO # 181417053015000, LOT 150, COOPERVILLE SUBN., UNIT 2; being the same tract or parcel of land described in Deed #2579400, recorded in the Conveyance Records of the Clerk of Courts office, Caddo Parish, Louisiana. GEO # 181417053015100, LOT 151, COOPERVILLE SUBN., UNIT 2; being the same

tract or parcel of land described in Deed #2579401, recorded in the Conveyance Records of the Clerk of Courts office, Caddo Parish, Louisiana. GEO # 181417053015600, LOT 156, COOPERVILLE SUBN., UNIT 2; being the same tract or parcel of land described in Deed #2579402, recorded in the Conveyance Records of the Clerk of Courts office, Caddo Parish, Louisiana. GEO # 181417053015700, LOT 157, COOPERVILLE SUB. UNIT #2; being the same tract or parcel of land described in Deed #2579403, recorded in the Conveyance Records of the Clerk of Courts office, Caddo Parish, Louisiana. GEO # 181418000007700, THE E. 40 FT. OF THE S. 208.71 FT. OF THE NE/4 OF SE/4 OF SEC. 18(18 14); being the same tract or parcel of land described in Deed #1334529, recorded in the Conveyance Records of the Clerk of Courts office, Caddo Parish, Louisiana. GEO # 181418000007900, W. 200 FT. OF E. 250 FT. OF N. 60 FT. OF S. 730.56 FT. OF SEC. 18(18 14), being the same tract or parcel of land described in Deed #1369096, recorded in the Conveyance Records of the Clerk of Courts office, Caddo Parish, Louisiana. GEO # 181418002015500, LOT 155, East Z LIVING SUB.; being the same tract or parcel of land described in Deed #1537627, recorded in the Conveyance Records of the Clerk of Courts office, Caddo Parish, Louisiana. GEO # 181417071010100, LOT 101, SHEPHERD PLACE; being the same tract or parcel of land described in Deed #, recorded in the Conveyance Records of the Clerk of Courts office, Caddo Parish, Louisiana. GEO # 181417000006200, 0.372 AC. M/L FROM SE. COR. OF SW/4 OF SW/4 OF NE/4 OF SEC. 17 (18 14) RUN W. 398.82 FT. TO POINT OF BEGINNING, THENCE N. 52 DEG. 22 MIN. 55.5 SEC. W. 338.70 FT. TO A PT. ON E. R/W LINE OF AUDREY LANE, THENCE S. ALONG SAID E. R/W 63.74 FT., THENCE S. 52 DEG. 22 MIN. 55.5 SEC. E. 115.08 FT., THENCE S. 32 DEG. 00 MIN. E. 85.79 FT., THENCE E. 131.67 FT. TO POINT OF BEGINNING; being the same tract or parcel of land described in Deed #1396243, recorded in the Conveyance Records of the Clerk of Courts office, Caddo Parish, Louisiana. GEO # 181417028065000, South 80 FT OF North 170 FT OF East 1 AC OF LOT 618, JONES MABRY SUB., UNIT #10; being the same tract or parcel of land described in Deed #1392369, recorded in the Conveyance Records of the Clerk of Courts office, Caddo Parish, Louisiana. GEO # 181417028069400, E. 50 FT. OF W. 126.41 FT. OF N. 165.0 FT. OF LOT 619, JONES MABRY SUBN. UNIT #10; being the same tract or parcel of land described in Deed #1396241, recorded in the Conveyance Records of the Clerk of Courts office, Caddo Parish, Louisiana. GEO # 181417028070400, FROM THE SE COR. OF LOT 618, JONES MABRY SUB., UNIT NO. 10, RUN W. 134 FT. TO THE POINT OF BEGINNING; THENCE W. 53.59 FT., THENCE S. 45.34 FT., THENCE S. 50 DEG. 11 MIN. 39.9 SEC. E. 69.76 FT., THENCE N. 90 FT. TO THE POINT OF BEGINNING, JONES MABRY SUB., UNIT NO. 10; being the same tract or parcel of land described in Deed # 1392369, recorded in the Conveyance Records of the Clerk of Courts office, Caddo Parish, Louisiana. GEO # 181417030067100, 1.00 ACRE E/2 OF LOT 650, JONES MABRY SUBN., UNIT 10; being the same tract or parcel of land described in Deed # 2120831, recorded in the Conveyance Records of the Clerk of Courts office, Caddo Parish, Louisiana. GEO # 181417038000300, LOT C, DANIEL PARK SUB, UNIT 2; being the same tract or parcel of land described in Deed #2717005, recorded in the Conveyance Records of the Clerk of Courts office, Caddo Parish, Louisiana. GEO # 181417038000400, LOT D, DANIEL PARK SUB., UNIT #2; being the same tract or parcel of land described in Deed #2781232, recorded in the Conveyance



Records of the Clerk of Courts office, Caddo Parish, Louisiana. GEO # 181417054011800, LOTS 61 TO 76, AUDREY PARK SUBN. AND 1/2 ABDN. DRAIN R/W; being the same tract or parcel of land described in Deed #1381864, recorded in the Conveyance Records of the Clerk of Courts office, Caddo Parish, Louisiana. GEO # 181417055010400, LOTS 50 TO 60 , AUDREY PARK SUBN. AND 1/2 ABDN. DRAIN R/W; being the same tract or parcel of land described in Deed #1381864, recorded in the Conveyance Records of the Clerk of Courts office, Caddo Parish, Louisiana. GEO # 181421019000400 LOT 4, J. R. RUSSELL SUBN., UNIT #1; being the same tract or parcel of land described in Deed #2671054, recorded in the Conveyance Records of the Clerk of Courts office, Caddo Parish, Louisiana. GEO # 181421019001100, LOT 11, J. R. RUSSELL SUB., UNIT 1; being the same tract or parcel of land described in Deed #2714659, recorded in the Conveyance Records of the Clerk of Courts office, Caddo Parish, Louisiana. GEO # 181421019003100, LOT 31, J. R. RUSSELL SUB., UNIT 1; being the same tract or parcel of land described in Deed #2766431, recorded in the Conveyance Records of the Clerk of Courts office, Caddo Parish, Louisiana. GEO # 181421032014700, LOT 147, LINCOLN MEMORIAL SUBN.; being the same tract or parcel of land described in Deed #1950974, recorded in the Conveyance Records of the Clerk of Courts office, Caddo Parish, Louisiana. GEO # 181421033014900, LOT 149, CARVER HTS SUB., UNIT #2; being the same tract or parcel of land described in Deed #2822326, recorded in the Conveyance Records of the Clerk of Courts office, Caddo Parish, Louisiana. GEO # 181417005040300, S. 100 FT. OF N. 150 FT. OF LOT 382, JONES MABRY SUBN., UNIT #6; being the same tract or parcel of land described in Deed #1090962, recorded in the Conveyance Records of the Clerk of Courts office, Caddo Parish, Louisiana. GEO # 181417030073200, 0.145 acres M/L N. 134.76 FT. OF THE E. 47.06 FT. OF THE S. 289.52 FT. OF LOT 664, JONES MABRY SUBN., UNIT #10; being the same tract or parcel of land described in Deed #1076008, recorded in the Conveyance Records of the Clerk of Courts office, Caddo Parish, Louisiana. GEO # 181417030073400, W. 97.07 FT. OF THE N. 134.76 FT. OF THE S. 289.52 FT. OF LOT 664, LESS THE S. 5.24 FT. OF THE W. 50 FT., THEREOF, JONES MABRY SUBN., UNIT NO. 10; being the same tract or parcel of land described in Deed #1124457, recorded in the Conveyance Records of the Clerk of Courts office, Caddo Parish, Louisiana. GEO # 181417030073600, N. 5.24 FT. OF THE W. 50 FT. OF THE S. 160 FT. OF LOT 664, JONES MABRY SUBN., UNIT NO. 10; being the same tract or parcel of land described in Deed #1124456, recorded in the Conveyance Records of the Clerk of Courts office, Caddo Parish, Louisiana. GEO # 181417030071100, North 150 FT OF THE E/2 OF LOT 661, JONES MABRY SUB., UNIT #10; being the same tract or parcel of land described in Deed #1225082, recorded in the Conveyance Records of the Clerk of Courts office, Caddo Parish, Louisiana. GEO # 181417071010000, LOT 100, SHEPHERD PLACE. being the same tract or parcel of land described in Deed #1999874, recorded in the Conveyance Records of the Clerk of Courts office, Caddo Parish, Louisiana. The above described tracts containing 8.688 Gross acres and 8.688 Net acres more or less, situated in Sections 16,17,18 AND 21, Township 18 North, Range 14 West, Caddo Parish, Louisiana. MINERALS RESERVED IN SALE BY CITY Sections 16,17,18 AND 21 T18N R14W Those minerals reserved in sale by City of Shreveport tracts, situated in Sections 16,17,18, AND 21, Township 18 North, Range 14 West, being described as GEO #

181416001027800, SELY. 58.25 FT. OF SWLY. 93.47 FT. OF LOT 13 JONES MABRY SUB.; GEO # 181416001027900, NWLY 58.25 FT OF SELY 116.5 FT OF SWLY 93.47 FT OF LOT 13, JONES MABRY SUB; GEO # 181416005000700, LOT G, SCHOOLSIDE SUB #2; GEO # 181416014028500, PT LOT 248 JONES MABRY SUB #3; GEO # 181416014030500, PT LOT 250 JONES MABRY SUB #3; GEO # 181416014031300, PT LOTS 249,250 JONES MABRY SUB #3; GEO # 181416022000300, LOT A, STEVEN ISRAEL SUB; GEO # 181416030000100, LOT 1 COOPER HILLS SUB; GEO # 181416056000700, LOT 7 MCCAIN CREEK ESTATES #1; GEO # 181416056002000, LOT 22 MCCAIN CREEK ESTATES #1; GEO # 181417005040200, E/70.643 feet LOT 377 JONES MABRY SUB #6; GEO # 181417010003300, W/2 LOT 419 JONES MABRY SUB; GEO # 181417013046800, N/2 LOT 457 JONES MABRY SUB #7; GEO # 181417013052800, S/52 feet OF N/413.46 feet LOT 456 JONES MABRY SUB #7; GEO # 181417030067900, PT LOT 646 JONES MABRY SUB #10; GEO # 181417043004200, PT LOT 8 W. W. JONES SUB; GEO # 181417047000700, LOT 7 LEGARDY HILLS SUB #1; GEO # 181417047005400, LOT 54 LEGARDY HILLS SUB #1; GEO # 181417047005600, LOT 56 LEGARDY HILLS SUB #1; GEO # 181417047005900, LOT 59 LEGARDY HILLS SUB #1; GEO # 181417047008000, LOT 80, LEGARDY HILLS SUB., UNIT 1; GEO # 181417050009200, LOT 92, LEGARDY HILLS SUBN., UNIT 2; GEO # 181417050009700, LOT 97, LEGARDY HILLS SUB UNIT 2; GEO # 181417052002200, LOT 22 COOPERVILLE SUB #2; GEO # 181417052002500, LOT 25 COOPERVILLE SUB #2; GEO # 181418002017300, PT LOTS 64,65 East Z LIVING SUB; GEO # 181418006018400, LOT 184 East Z LIVING SUB #2; GEO # 181418006018500, LOT 185 East Z LIVING SUB #2; GEO # 181418011006000, LOT 60 PRINCE HALL VILLAGE SUB; GEO # 181418022012300, LOT 129 COOPER HEIGHTS SUB #4; GEO # 181421011018600, LOT 186 JONES MABRY SUB #2; GEO # 181421001038200, PT LOT 115 JONES MABRY SUB #2; GEO # 181421032021200, LOT 212 LINCOLN MEMORIAL SUB; GEO # 181421034002500, LOT 25 CARVER HEIGHTS SUB #2; GEO # 181421001011200, 1.261 ACS. LOT 112 W. 0.25 AC. OF LOT 113, JONES MABRY SUB., UNIT #2; GEO # 181421034019000, LOT 190 CARVER HEIGHTS SUB #2; GEO # 181421035002000, LOT 20 GOOD FRIEND SUB; GEO # 181421033016600, LOT 166 CARVER HEIGHTS SUB #2; GEO # 18142103401200, LOT 120 CARVER HEIGHTS SUB #2; GEO # 181421032007000, LOT 70 LINCOLN MEMORIAL SUB; GEO # 181421032019900, LOT 199 LINCOLN MEMORIAL SUB; GEO # 181421032008100, LOT 81 LINCOLN MEMORIAL SUB; GEO # 181421032004100, LOT 41 LINCOLN MEMORIAL SUB; GEO # 181421001027300, PT LOT 84 JONES MABRY SUB #2 LESS R/W; GEO # 181421021002500, W/26 feet LOT 12 AND E/18 feet LOT 13 CUTLIFF SUB; GEO # 181421021003400, W/26 feet LOT 19 AND E/18 feet LOT 18 CUTLIFF SUB; GEO # 181421021003600, W/20 feet LOT 20 AND E/24 feet LOT 19 CUTLIFF SUB; GEO # 181421004000500, LOT 5 BERRY SUB; GEO # 181421032023400, N/40 feet LOT 113 LINCOLN MEMORIAL SUB; GEO # 181421011024100, PT LOT 162 JONES MABRY SUB #2; GEO # 181421028000200, LOT B, MILBURN CLARICE SUB. The above described tracts containing 15.6308 Gross acres and 15.6308 Net acres more or less, situated in Sections 16,17,18 AND 21, Township 18 North, Range 14 West, Caddo Parish, Louisiana. DEDICATED ROADS Sections 16,17,18, 19 AND 21 T18N R14W Those certain Dedicated Roads, situated in Sections 16,17,18, 19 AND 21, Township 18 North, Range 14 West, being described as 5TH ST, 6TH ST, 7TH STREET, ABEL STREET, ACACADO DR., ADDITION AVE, ALADDIN LN, ALDA ST., ALINE AVE, ALINE CIR, ANDERSON ST, AUDREY LN., BOND DR, BOOKER T. WASHINGTON RD., BOYKIN BLVD, CAIN ST. (UNBUILT), CALDWELL ST., CHRISTOPHER GLEN RD, CINDERELLA DR, CLEMENT LANE, COLES ST, CUTLIFF RD, DAKAR ST, DAVID RAINES RD, DOVE ST., DOWNING

STREET, FALCON LOOP, FREDDIE ST, GALAHAD CIRCLE, GEORGE WASHINGTON CARVER, GILLIAM ST., GORDONIA DR., GRETTEL RD, HANNA ST, HANSEL ST, HAVANA ST., HAWKINS ST, HAZEL ST, HERSEY D. WILSON DR., HILL ST, HONORE ST, ICE CREAM ST., IRONWOOD DR, JACKIE ROBINSON DR, JAMISON ST, JENNIE ST, JESSE OWNES ST., JOE LOUIS BLVD, JONES MABRY RD, JONQUIL DR., KELSEY ST, KING ARTHUR CIRCLE, KNOX ST, LAKE BETHLEHEM ST., LANCELOT COURT, LEGARDY ST, LINEAR ST., LUNN ST., MARJORIE ST, MARY PEARL ST, MATTIE ST, MATTIE AVE, MAYHAW CIR., MICHOU D ST, MILLER AVE., MONTANA STREET, NASH ST, NOAH ST, NorthSIDE RD, NORTON ST., OAK FOREST LN., PEACH CIRCLE, PEACH ST, PEARL BAILEY ST., PEARL ST, PHELPS RD, POUNCEY LN, PRINCESS ELIANE ST., RAGSDALE AVE., RALPH STREET, REAR MONTANA , REDSTONE DR., RENTIE LN/FISHER, ROMBY ST., ROSA LEE AVE, RUBY ST., RUSSELL RD **LESS AND EXCEPT** the South 1,533 feet, SAM ST, SAMSON AVE, SAVOY ROAD (UNBUILT), SHEPARD DR., SHIRLEY ST, SIDNEY ST, SIMPKIN DR, SKELLY ST., SNOW WHITE LN, SOLOMON CIRCLE , STAFFORD DR, STANLEY CIR., STEWART ST, SUGAR LN., TERRY ST, THOMAS EDWARD SENIOR DR., TOWER DR., UNNAMED ST. F (UNBUILT ROAD), UNNAMED ST. J (UNBUILT ROAD), WILLER ST./WILSON DR., WILLIE MAYS ST, WILLIS ST, WISE STREET, WOOLBERT ST, YORKTOWN DR. The above described tracts containing 231.7710 Gross acres and 231.7710 Net acres. The aggregate of the above described tracts total **291.7728 acres**, all as more particularly outlined on a plat on file in the Office of Mineral Resources, Department of Natural Resources. The description is based on information provided by the State Agency regarding location and ownership of surface and mineral rights. All bearings, distances and coordinates, if applicable, are based on Louisiana Coordinate System of 1927, (North or South Zone).

NOTE: The above description of the Tract nominated for lease has been provided and corrected, where required, exclusively by the nomination party. Any mineral lease selected from this Tract and awarded by the Louisiana State Mineral and Energy Board shall be without warranty of any kind, either express, implied, or statutory, including, but not limited to, the implied warranties of merchantability and fitness for a particular purpose. Should the mineral lease awarded by the Louisiana State Mineral and Energy Board be subsequently modified, cancelled or abrogated due to the existence of conflicting leases, operating agreements, private claims or other future obligations or conditions which may affect all or any portion of the leased Tract, it shall not relieve the Lessee of the obligation to pay any bonus due thereon to the Louisiana State Mineral and Energy Board, nor shall the Louisiana State Mineral and Energy Board be obligated to refund any consideration paid by the Lessor prior to such modification, cancellation, or abrogation, including, but not limited to, bonuses, rentals and royalties.

NOTE: Lessee, it's successors or assigns, may produce oil, gas and other minerals from the leased premises by drilling from a surface location on other lands, but notwithstanding any other provision of this lease, Lessee, it's successors or assigns, shall not use the surface of the Lessor's property for drilling or any other operations without prior written permission of Lessor, which permission may be withheld at Lessor's discretion.

NOTE: Notwithstanding anything to the contrary herein contained, at the end of the primary term or any extension thereof by operations, if the Commission of Conservation of the State of Louisiana establishes a drilling unit which included a part of the land herein leased, the production of oil, gas and other minerals from such unit shall maintain this lease in full force and effect only as to such portions of the leased land embraced in said pooled unit; and this lease shall expire as to that part of the land herein leased not included in such unit; and lessee, its successors and assigns agrees to relinquish by formal instrument any portion of the leased land not included in a unit created by the Commission of Conservation while this lease is in effect.

NOTE: Upon the expiration of the primary term hereof or any extension thereof by operations, this lease shall automatically terminate and be of no further force or effect except as to all that part of the leased premises then included within the geographical boundaries of a producing unit duly established by governmental agency or authority having jurisdiction, from the surface of the earth to a depth of 100 feet below the deepest depth from which any well commenced during the primary term hereof on the leased premises or on lands pooled therewith is completed and from which there is production in paying quantities, such depth determination to be made on a unit by unit basis. In the absence of units so established, this lease shall terminate except as to 40 acres around each producing oil well and 160 acres around each producing or shut-in gas well located on the leased premises, in as near the form of a square as is practicable, from the surface of the earth down to a depth of 100 feet below the deepest depth from which said well or wells are completed and from which there is production in paying quantities, such depth determination to be made on a well by well basis.

NOTE: There will be a requirement of a minimum bonus of \$3,000 per acre and a minimum royalty of 25%.

Applicant: CYPRESS ENERGY PARTNERS, LLC to Agency and by Resolution from the City Of Shreveport authorizing the Mineral Board to act in its behalf

Bidder	Cash Payment	Price/ Acre	Rental	Oil	Gas	Other



Legend

23120010



0 2,500 Feet



Office of Mineral Resources, Acres: 291.7728 Tract Number: 45704

CADDO

T18N - R14W

SEC 9

SEC 8

SEC 7

T18N - R15W

SEC 13

SEC 15

SEC 20

SEC 24

SEC 22

SEC 28

SEC 30

North Highlands

McCain

Substation

Green Oaks High Sch

St. Martin's Ch

Pin Oak Ch

Take Bldg

Southern University

Interport-Bossier City Branch

Cooper

David Ramey

Radio Tower

Seage Disposal

Radio Tower (KCJ)

Radio Towers

Middle

Bayou

Ben Roberts Pocket

Hicks Pocket

Cooper

Cooper

Cooper

Cooper

Cooper

Cooper

Cooper

Cooper

Cooper

Cooper

Cooper

Cooper

Cooper

Cooper

Cooper

Cooper

Cooper

Cooper

Cooper

Cooper

Cooper

Cooper

Cooper

Bayou

Cooper

Cooper

Cooper

Cooper

Cooper

Cooper

Cooper

Cooper

Cooper

Cooper

Cooper

Cooper

Cooper

Cooper

Cooper

Cooper

Cooper

Cooper

Cooper

Cooper

Cooper

Cooper

Cooper

Cooper

Cooper

Cooper

Cooper

Cooper

Cooper

Cooper

Cooper

Cooper

Cooper

Cooper

Cooper

Cooper

Cooper

Cooper

Cooper

Cooper

Cooper

Cooper

Cooper

Cooper

Cooper

Cooper

Cooper

Cooper

Cooper

Cooper

Cooper

Cooper

Cooper

Cooper

Cooper

Cooper

Cooper

Cooper

Cooper

Cooper

Cooper

Cooper

Cooper

Cooper

Cooper

Cooper

Cooper

Cooper

Cooper

Cooper

Cooper

Cooper

Cooper

Cooper

Cooper

Cooper

Cooper

Cooper

Cooper

Cooper

Cooper

Cooper

Cooper

Cooper

Cooper

Cooper

Cooper

Cooper

Cooper

Cooper

Cooper

Cooper

Cooper

Cooper

Cooper

Cooper

Cooper

Cooper

Cooper

Cooper

Cooper

Cooper

Cooper

Cooper

Cooper

Cooper

Cooper

Cooper

Cooper

Cooper

Cooper

Cooper

Cooper

Cooper

Cooper

Cooper

Cooper

Cooper

Cooper

Cooper

Cooper

Cooper

Cooper

Cooper

Cooper

Cooper

Cooper

Cooper

Cooper

Cooper

Cooper

Cooper

Cooper

Cooper

Cooper

Cooper

Cooper

Cooper

Cooper

Cooper

Cooper

Cooper

Cooper

Cooper

Cooper

Cooper

Cooper

Cooper

Cooper

Cooper

Cooper

Cooper

Cooper

Cooper

Cooper

Cooper

Cooper

Cooper

Cooper

Cooper

Cooper

Cooper

Cooper

Cooper

Cooper

Cooper

Cooper

Cooper

Cooper

Cooper

Cooper

Cooper

Cooper

Cooper

Cooper

Cooper

Cooper

Cooper

Cooper

Cooper

Cooper

Cooper

Cooper

Cooper

Cooper

Cooper

Cooper

Cooper

Cooper

Cooper

Cooper

Cooper

Cooper

Cooper

Cooper

Cooper

Cooper

Cooper

Cooper

Cooper

Cooper

Cooper

Cooper

Cooper

Cooper

Cooper

Cooper

Cooper

Cooper

Cooper

Cooper

Cooper

Cooper

Cooper

Cooper

Cooper

Cooper

Cooper

Cooper

Cooper

Cooper

Cooper

Cooper

Cooper

Cooper

Cooper

Cooper

Cooper

Cooper

Cooper

Cooper

Cooper

Cooper

Cooper

Cooper

Cooper

Cooper

Cooper

Cooper

Cooper

Cooper

Cooper

Cooper

Cooper

Cooper

Cooper

Cooper

Cooper

Cooper

Cooper

Cooper

Cooper

Cooper

Cooper

Cooper

Cooper

Cooper

Cooper

Cooper

Cooper

Cooper

Cooper

Cooper

Cooper

Cooper

Cooper

Cooper

Cooper

Cooper

Cooper

Cooper

Cooper

Cooper

Cooper

Cooper

Cooper

Cooper

Cooper

Cooper

Cooper

Cooper

Cooper

Cooper

Cooper

Cooper

Cooper

Cooper

Cooper

Cooper

Co



**TRACT 45705 - Caddo Parish, Louisiana**

A certain Tract of land, excluding the beds and bottoms of all navigable waters, belonging to and not presently under mineral lease from City Of Shreveport on December 13, 2023, being more fully described as follows: Those certain Dual Claim adjudicated tracts, situated in Sections 16,17,18, AND 21, Township 18 North, Range 14 West, being described as GEO # 181416018001600, THE West 8.5 FT. OF LOT 6, MILLER BRADFORD SUBD.; GEO # 181416029037400, S. 20 FT OF N. 147.25 FT OF W. 53 FT OF LOT 325, JONES MABRY SUBN., UNIT 3; GEO # 181416061001800, N. 75.84 FT. OF LOT 4, CRAWFORD PARK; GEO # 181416012025600, N. 35.99 FT OF S. 195.99 FT OF W. 120 FT OF LOT 222, JONES MABRY SUBN., UNIT 3; Geo # 181416011000100, LOT A, REESE PARK, UNIT A, LESS THAT PART IN DRAINAGE DITCH; GEO # 181416007003500, 0.116 ACS. M/L LOT A, MONTANA PARK SUB., LESS THAT PART TAKEN FOR STATE PROJ. H.011105 ON INST. #2518474; GEO # 181416002001400, LOT 14, SCHOOLSIDE SUB; GEO # 181416014026700, W. 45 FT OF E. 79 FT OF N. 125 FT OF LOT 251, JONES MABRY SUBN., UNIT 3; GEO # 181416019000400, LOT 4, MILLEN AND DODSON SUB; GEO # 181416019000200, LOT 2, MILLEN AND DODSON SUB; GEO # 181416006000400, LOT B, CAMERON PARK SUB; GEO # 181416056003100, LOT 31, MC CAIN CREEK ESTATES, UNIT #1; GEO # 181416017031300, E. 38 FT OF W. 76 FT OF N/2 OF LOT 269, JONES MABRY SUBN., UNIT 3; GEO # 181416011000200, LOT B, REESE PARK, UNIT A, LESS THAT PART IN DRAINAGE DITCH; GEO # 181416014029700, South 29.37 FT. OF North 154.37 FT. OF West 230 FT. OF LOT 251, JONES MABRY SUB, UNIT 3; GEO # 181416017031800, W. 38 FT OF E. 150 FT OF N/2 OF LOT 269, JONES MABRY SUB, UNIT 3; GEO # 181416030001200, LOT 12, COOPER HILLS SUB.; GEO # 181416019001500, LOT 15, MILLEN AND DODSON SUB.; GEO # 181416029035800, S. 50 FT OF N. 100 FT OF W. 135 FT OF LOT 294, JONES MABRY SUBN., UNIT #3, LESS R/W; GEO # 181416012029100, A TRACT OF LAND IN LOT 221, JONES MABRY SUBN., UNIT NO. 3, PER ASSESSOR'S. CITY PLAT; GEO # 181416019001400, LOT 14, MILLEN AND DODSON SUB.; GEO # 181416014029000, East 44 FT OF West 132 FT OF LOT 250, LESS North 155 FT THEREOF, JONES MABRY SUB, UNIT #3; GEO # 181416017031200, W. 38 FT OF N/2 OF LOT 269 JONES MABRY SUB, 3; GEO # 181416017031400, E. 38 FT. OF W. 114 FT. OF N/2 OF LOT 269, JONES MABRY SUBN., UNIT #3; GEO # 181416011000400, LOT D, REESE PARK, UNIT A; GEO # 181416011000300, LOT C, REESE PARK, UNIT A; GEO # 181416057006800, LOT 68, MC CAIN CREEK ESTATES, UNIT #2; GEO # 181416029039600, S. 135 FT. OF E. 50 FT. OF LOT 294, JONES MABRY SUBN., UNIT #3; GEO # 181416029039700, W/2 OF S. 135 FT. OF E. 109 FT. OF LOT 294, JONES MABRY SUBN., UNIT #3; GEO # 181416001028800, North 45 FT. OF South 247.4 FT. OF East 150 FT. OF LOT 45, JONES MABRY SUB.; GEO # 181416001033100, N. 50 FT OF E. 130 FT OF LOT 45, JONES MABRY SUB.; GEO # 181416001033300, S. 50 FT OF N. 217.8 FT OF E. 130 FT OF LOT 45, JONES MABRY SUB.; GEO # 181416016000100, LOT A, TAYLORS TWO LOT SUB.; GEO # 181416017034000, North 100 FT OF E. 70 FT OF LOT 254, JONES MABRY SUB., UNIT #3; GEO # 181416057006500, LOT 65, MC CAIN CREEK ESTATES, UNIT #2; GEO # 181416017032600, W. 44 FT OF E. 220 FT OF S. 165 FT OF LOT 258, JONES MABRY SUB., UNIT #3; GEO # 181416029039100, North 55 FT. OF E/2 OF LOT 298, JONES MABRY SUBN., UNIT 3; GEO # 181416047003700, LOT 37, BUNCHE SUB UNIT 2; GEO # 181416025000300, LOT 3, RE SUBN. OF LOT 281, JONES MABRY SUBN., UNIT 3; GEO # 181416050000600, W. 50 FT. OF LOT B, WASHINGTON PARTN. OF LOT 310 JONES MABRY SUB, UNIT 3; GEO # 181416028000100, LOT A, AVERY PARK;

GEO # 181416039000400, LOT D, JONAS NICHOLS SUB.; GEO # 181416018001000, LOT 10, MILLER BRADFORD SUB.; GEO # 181416061002000, S. 151.64 FT. OF LOT 4, CRAWFORD PARK; GEO # 181416001026000, E. 65 FT OF S. 120 FT OF E. 2.11 acres OF W. 3.61 acres OF LOT 42 JONES MABRY SUBN; GEO # 181416046001300, LOT 13, BUNCHE SUB., UNIT #1; GEO # 181416014026500, E. 67.5 FT OF W. 95 FT OF N. 125 FT OF LOT 251, JONES MABRY SUB., UNIT #3; GEO # 181416031000100, LOT 1, PHILLIPS PARK; GEO # 181416046001400, LOT 14, BUNCHE SUB., UNIT #1; GEO # 181416041000100, LOT 1, FOX SUBN. WD4 SD5; GEO # 181416014028000, E. 55 FT OF S. 160 FT OF LOT 252, JONES MABRY SUB., UNIT 3; GEO # 181416009025100, 0.20 ACS M/L South 80 FT OF West 112.21 FT OF LOT 232, JONES MABRY SUB., UNIT #3; GEO # 181416038000800, LOT 8, RESUB OF LOTS A, B, C, D RHODESSA SIMS LOT; GEO # 181416061000200, LOT 2, CRAWFORD PARK; GEO # 181416009025000, 0.20 AC. M/L North 80 FT. OF West 112.21 FT OF LOT 232 OF JONES MABRY SUBN., UNIT NO. 3; GEO # 181416014030000, W. 60 FT OF E. 175 FT OF S. 160 FT OF LOT 252, JONES MABRY SUBN., UNIT #3; GEO # 181416046001500, LOT 15, BUNCHE SUBN., UNIT 1; GEO # 181416047003500, LOT 35, BUNCHE SUB., UNIT 2; GEO # 181416001035900, THE West 200 FT. OF North 54.45 FT. OF South 311.3 FT. OF LOT 45, JONES MABRY SUBN., UNIT NO. 1; GEO # 181416014030100, South 18 FT OF East 40.46 FT OF LOT 253, LOT 252, LESS North 125 FT THEREOF AND LESS North 171.31 FT OF South 189.31 FT OF West 66.54 FT. THEREOF AND LESS South 160 FT OF East 175 FT. THEREOF, JONES MABRY SUBN UNIT 3; GEO # 181416014026900, N. 125 FT OF W. 27.5 FT OF LOT 251 AND N. 125 FT OF E. 62.5 FT OF LOT 252, JONES MABRY SUB., UNIT 3; GEO # 181416046002900, LOT 25 E/2 OF LOT 24, BUNCHE SUBN., UNIT #1; GEO # 181416014026600, E. 90 FT OF W. 185 FT OF N. 125 FT OF LOT 251, JONES MABRY SUB., UNIT 3; GEO # 181416061001400, LOT 14, CRAWFORD PARK; GEO # 181416061001200, LOT 12, CRAWFORD PARK; GEO # 181416061001300, LOT 13, CRAWFORD PARK; GEO # 181416061001000, LOT 10, CRAWFORD PARK; GEO # 181416061000700, LOT 7, CRAWFORD PARK; GEO # 181416014027700, W. 54.8 FT OF N. 125 FT OF LOT 252 AND E. 40.2 FT OF N. 125 FT OF LOT 253, JONES MABRY SUB., UNIT 3; GEO # 181416045037100, South 100 FT OF North 230 FT OF West 135 FT OF LOT 307, JONES MABRY SUB 3; GEO # 181416014029200, W. 88 FT OF LOT 250, LESS N. 155 FT., JONES MABRY SUB., UNIT #3; GEO # 181416029036500, South 55 FT OF North 220 FT South 55 FT OF North 165 FT OF E/2 OF LOT 298, JONES MABRY SUB., UNIT #3; GEO # 181416050000800, LOT C, WASHINGTON PARTN OF LOT 310, JONES MABRY SUB, UNIT 3; GEO # 181416039000600, LOT F, JONAS NICHOLS SUB. 181416 39 6. GEO # 181416009025400, 0.38 AC. M/L THE S. 148.02 FT. OF THE N. 228.02 FT. OF THE W. 112.21 FT. OF LOT 232. JONES MABRY SUBN., UNIT NO. 3; GEO # 181416045036300, North 130 FT OF West 135 FT OF LOT 307, JONES MABRY SUB., UNIT #3; GEO # 181416000002200, W. 150 FT OF N. 150 FT OF SW/4 OF SW/4 OF SW/4 SEC. 16 18 14, LESS R/W; GEO # 181416001031400, SWLY 115 FT OF NELY 165 FT OF SELY 160 FT OF LOT 15, JONES MABRY SUB.; GEO # 181416000004400, N. 258.58 FT. OF THE W. 77.25 FT. OF THE E. 314.36 FT. OF THE SW/4 OF SW/4 OF SW/4, SEC. 16 (18 14); GEO # 181416045038100, W/2 OF E/2 OF LOT 308, JONES MABRY SUBN., UNIT #3; GEO # 181416029035700, W/2 OF E/2 OF LOT 297, JONES MABRY SUB 3 181416 29 357. GEO # 181416045038000, E/2 OF E/2 OF LOT 308, JONES MABRY SUB., UNIT #3; GEO # 181416029035500, West 42.43 FT OF LOT 322, JONES MABRY SUB 3; GEO # 181416047003800, LOTS 32 AND 33, BUNCH SUB., UNIT #2; GEO # 181416017033200, W. 76 FT. OF E. 176 FT. OF LOT 290, JONES MABRY SUBN., UNIT #3; GEO # 181416009024700, LOT 229, LESS N. 220 FT.

OF E. 139 FT. AND LESS THAT PART IN DRAINAGE DITCH, JONES MABRY SUBN., UNIT NO. 3; GEO # 181416009024400, S. 125 FT OF LOT 233 JONES MABRY SUBN., UNIT 3 LESS R/W; GEO # 181416035036300, East 214 FT. OF North 150 FT. LOT 312, JONES MABRY SUB., UNIT 3; GEO # 181416024031800, S. 230 FT OF LOT 288, LESS W. 112 FT THEREOF, JONES MABRY SUB., UNIT #3; GEO # 181416017033100, East 100 FT. OF LOT 290, JONES MABRY SUBN., UNIT #3; GEO # 181416035036900, E/2 OF LOT 311, LESS W. 26 FT OF N. 26 FT THEREOF, JONES MABRY SUBN, UNIT #3; GEO # 181416059000300, LOTS 1 AND 2, ROSIE F. GRIFFIN PARK; GEO # 181416001020500, N. .85 OF AN ACRE OF S. 1.85 ACRE OF LOT 45, JONES MABRY SUBN.; GEO # 181416001018600, 1.00 ACRE S. 1 ACRE OF LOT 46, JONES MABRY SUB 3 IMPS; GEO # 181416024031300, E/2 OF LOT 287, JONES MABRY SUB., UNIT 3; GEO # 181416035034400, West 78.35 FT. OF East 156.70 FT. OF LOT 327, JONES MABRY SUB., UNIT 3; GEO # 181416001036900, 1.35 AC. M/L A TRACT OF LAND IN LOT 48, JONES MABRY SUBN., IN SEC. 16 (18 14) PER ASSRS CITY PLAT; GEO # 181416001020400, 1.00 ACRE S. 1 ACRE OF LOT 45, JONES MABRY SUB.; GEO # 181416035036400, South 180 FT. OF LOT 312, JONES MABRY SUB. UNIT #3; GEO # 181416001015200, 1.17 ACS N. 1.17 ACS OF LOT 52, JONES MABRY SUB.; GEO # 181416009024100, 1.86 ACS. M/L S/2 OF LOTS 211 AND 212, LESS DRAINAGE DITCH R/W IN S/2 OF LOT 211; GEO # 181416035034100, S. 152 FT OF LOTS 314 315, JONES MABRY SUBN. UNIT 3; GEO # 181416014023800, 1.90 ACS LOT 238 OF JONES MABRY SUB., UNIT #3; GEO # 181416014033200, 2.55 ACS. M/L LOT 244 AND W. .90 ACRE OF LOT 245 JONES MABRY SUBN., UNIT #3, LESS R/W; 181417013054500, W. 10 FT. OF E. 40 FT. OF N. 10 FT. OF S. 140 FT OF LOT 456, JONES MABRY SUBN. UNIT #7; GEO # 181417019001200, N. 6 FT OF E. 15 FT OF LOT 1, KNOX SUB; GEO # 181417024000400, North 20.75 FT. OF East 15.4 FT. OF LOT A, ALEX LEE PARK; GEO # 181417013058400, S. 17.27 FT. OF N. 117.27 FT. OF W. 119.285 FT. OF LOT 439, JONES MABRY SUBN., UNIT NO. 7; GEO # 181417010000900, W/2 OF LOT 422, JONES MABRY SUB, UNIT #7; GEO # 181417013058100, 0.09 AC M/L S. 35 FT. OF THE N. 80 FT. OF THE E. 119.285 FT. OF LOT 439, JONES MABRY SUBN., UNIT #7; GEO # 181417013058800, N. 37 FT. OF S. 79 FT. OF E. 119.285 FT. OF LOT 439, JONES MABRY SUBN., UNIT NO. 7; GEO 181417016002100, N. 37.6 FT OF S. 46.3 FT OF LOT 9, MARY JOE PLACE; GEO # 181417017002500, West 35.23 FT. OF North 140.75 FT. OF LOT 12, VAN SUB.; GEO # 181417013057400, S. 40 FT OF N. 120 FT OF E. 119.285 FT OF LOT 439, JONES MABRY SUB, UNIT 7; GEO # 181417013058900, N. 41 FT. OF S. 192.78 FT. OF E. 119.285 FT. OF LOT 439, JONES MABRY SUBN., UNIT NO. 7; GEO # 181417040000700, LOT 7, PEACH TREE SUBN.; GEO # 181417052007200, LOT 72, COOPERVILLE SUBN., UNIT #2; GEO # 181417010008700, W. 66 FT. OF E. 132 FT. OF N. 80 FT. OF LOT 412, JONES MABRY SUBN., UNIT #7; GEO # 181417001037900, W. 70 FT OF E. 220 FT OF N. 77.57 FT OF LOT 349, JONES MABRY SUB., UNIT 4; GEO # 181417046000300, LOT C, LEGARDY OAKS, UNIT #2; GEO # 181417033000100, LOT 1, MARY PEARL SUBN.; GEO # 181417053015800, LOT 158, LESS R/W, COOPERVILLE SUB., UNIT 2; GEO # 181417054000100, LOT 1, AUDREY PARK SUB.; GEO # 181417026000600, LOT 6 A, ALEX LEE PARK, UNIT #1 A; GEO # 181417013051500, North 44 FT. OF South 263 FT. OF West 1/2 OF LOT 442, JONES MABRY SUB. 7; GEO # 181417005039300, W. 50 FT OF E. 115 FT OF N. 120 FT OF LOT 375, JONES MABRY SUB UNIT 6; GEO # 181417033001000, LOT 10, MARY PEARL SUBN.; GEO # 181417053017100, LOT 171, COOPERVILLE SUB., UNIT #2; GEO # 181417057001000, LOT 10, LEGARDY VILLAGE; GEO # 181417013053200, S/2 OF W. 40 FT. OF E/2 OF LOT 429, JONES MABRY SUB.,



UNIT #7; GEO # 181417019001000, LOT 10, KNOX SUB.; GEO # 181417033000200, LOT 2, MARY PEARL SUBN.; GEO # 181417033000900, LOT 9, MARY PEARL SUBN.; GEO # 181417047002500, LOT 25, LEGARDY HILLS SUB, UNIT 1; GEO # 181417053017600, LOT 176, COOPERVILLE SUBN., UNIT 2; GEO # 181417053017700, LOT 177, COOPERVILLE SUBN., UNIT 2; GEO # 181417026000100, LOT 1 A, ALEX LEE PARK, UNIT #1 A; GEO # 181417026000900, LOT 9 A, ALEX LEE PARK SUB, UNIT #1 A; GEO # 181417026001000, LOT 10 A, ALEX LEE PARK, UNIT #1 A; GEO # 181417026001100, LOT 11 A, ALEX LEE PARK, UNIT #1 A; GEO # 181417029064800, S. 50 FT OF N. 250 FT OF LOT 624, JONES MABRY SUB., UNIT 10; GEO # 181417029065800, N. 50 FT OF S. 106.9 FT OF LOT 624, JONES MABRY SUB., UNIT 10; GEO # 181417051000100, LOT 1, COOPERVILLE SUBN., UNIT 1; GEO # 181417052010900, LOT 109, COOPERVILLE SUBN., UNIT 2; GEO # 181417052011400, LOT 114, COOPERVILLE SUBN., UNIT 2; GEO # 181417053009500, LOT 95, COOPERVILLE SUBN., UNIT 2; GEO # 181417053009600, LOT 96, COOPERVILLE SUBN., UNIT 2; GEO # 181417053015900, LOT 159, LESS R/W, COOPERVILLE SUB., UNIT 2; GEO # 181417053016200, LOT 162, COOPERVILLE SUBN., UNIT 2; GEO # 181417026000800, LOT 8 A, ALEX LEE PARK SUB, UNIT #1 A; GEO # 181417026000300, LOT 3 A, ALEX LEE PARK, UNIT #1 A; GEO # 181417026000400, LOT 4 A, ALEX LEE PARK, UNIT #1 A; GEO # 181417026000500, LOT 5 A, ALEX LEE PARK, UNIT #1 A; GEO # 181417026001600, LOT 16 A, ALEX LEE PARK, UNIT #1 A; GEO # 181417026001700, LOT 17 A, ALEX LEE PARK, UNIT #1 A; GEO # 181417047008700, LOT 87, LEGARDY HILLS SUB., UNIT 1; GEO # 181417048000200, LOT B, LEGARDY HILLS PARK; GEO # 181417052002800, LOT 28, COOPERVILLE SUBN. UNIT #2; GEO # 181417052002900, LOT 29, COOPERVILLE SUBN., UNIT 2; GEO # 181417052003000, LOT 30, COOPERVILLE SUBN., UNIT 2; GEO # 181417053003900, LOT 39, COOPERVILLE SUBN., UNIT 2; GEO # 181417053016700, LOT 167, COOPERVILLE SUBN., UNIT 2; GEO # 181417030071900, E. 72.15 FT. OF N. 151.19 FT. OF S. 302.38 FT. OF LOT 660, JONES MABRY SUB., UNIT 10, LESS DRAIN EAS.; GEO # 181417047008500, LOT 85, LEGARDY HILLS SUBN., UNIT 1; GEO # 181417052006700, LOT 67, COOPERVILLE SUBN., UNIT 2; GEO # 181417052011800, LOT 118, COOPERVILLE SUBN., UNIT 2; GEO # 181417042000100, LOT 1, HERIATAGE SUB; GEO # 181417030072200, E. 72.15 FT. OF N. 151.20 FT. OF S. 453.58 FT. OF LOT 660, JONES MABRY SUB., UNIT #10; GEO # 181417052011500, LOT 115, COOPERVILLE SUBN., UNIT 2; GEO # 181417053003400, LOT 34, COOPERVILLE SUBN., UNIT 2; GEO # 181417010001400 N. 65 FT OF S. 135 FT OF LOT 398, JONES MABRY SUBN., UNIT #7, LESS R/W; GEO # 181417013059000, N. 72.78 FT. OF S. 151.78 FT. OF E. 119.285 FT. OF LOT 439, JONES MABRY SUBN., UNIT NO. 7; GEO # 181417050010200, LOT 102, LEGARDY HILLS SUBN., UNIT 2; GEO # 181417050011200, LOT 112, LEGARDY HILLS SUBN., UNIT #2 181417 50 112; GEO # 181417047006100, LOT 61, LEGARDY HILLS SUB., UNIT 1; GEO # 181417050010100, LOT 101, LEGARDY HILLS SUBN., UNIT 2; GEO # 181417052011900, LOT 119, COOPERVILLE SUBN., UNIT 2; GEO # 181417053003800, LOT 38, COOPERVILLE SUBN., UNIT 2; GEO # 181417053016000, LOT 160, COOPERVILLE SUBN., UNIT 2; GEO # 181417045000600, LOT 6, LEGARDY OAKS SUB., UNIT #1; GEO # 181417053017500, LOT 175, COOPERVILLE SUBN., UNIT 2; GEO # 181417030072000, W. 72.16 FT. OF N. 151.20 FT. OF S. 453.58 FT. OF LOT 660, JONES MABRY SUB., UNIT #10; GEO # 181417010002700, South 45 FT. OF North 135 FT. OF LOT 418, JONES MABRY SUB., UNIT 7, LESS R/W; GEO # 181417053016100, LOT 161, COOPERVILLE SUBN., UNIT #2; GEO # 181417052012000, LOT 120, COOPERVILLE SUBN., UNIT 2; GEO # 181417053016500, LOT 165, COOPERVILLE SUBN., UNIT 2;

GEO # 181417053017200, LOT 172, COOPERVILLE SUB UNIT 2; GEO # 181417052011700, LOT 117, COOPERVILLE SUBN., UNIT 2; GEO # 181417053003700, LOT 37, COOPERVILLE SUBN., UNIT 2; GEO # 181417047002300, LOT 23, LEGARDY HILLS SUB UNIT 1; GEO # 181417047000500, LOT 5, LEGARDY HILLS SUB., UNIT #1; GEO # 181417053009400, LOT 94, COOPERVILLE SUBN., UNIT 2; GEO # 181417052006600, LOT 66, COOPERVILLE SUBN., UNIT 2; GEO # 181417031000100, LOT A, MIMS SUB.; GEO # 181417031000200, LOT B, MIMS SUB.; GEO # 181417031000300, LOT C, MIMS SUB.; GEO # 181417031000400, LOT D, MIMS SUB.; GEO # 181417031000500, LOT E, MIMS SUB.; GEO # 181417052011600, LOT 116, COOPERVILLE SUBN., UNIT 2; GEO # 181417030067400, W/2 OF LOT 661, LESS DRAINAGE DITCH, JONES MABRY SUBN., UNIT 10; GEO # 181417052001800, LOT 18, COOPERVILLE SUBN., UNIT 2; GEO # 181417043004000, North 200.39 FT. OF W/2 OF LOT 7, W. W. JONES SUBN., UNIT NO. 1; GEO # 181417010001100, E/2 OF LOT 390, JONES MABRY SUB UNIT 7; GEO # 181417029065900, S. 56.9 FT. N. 100 FT. OF THE S. 206.9 FT. OF LOT 624, JONES MABRY SUB., UNIT 10; GEO # 181417028064200, E/2 OF LOT 607, JONES MABRY SUB., UNIT #10; GEO # 181417010003600, N. 90 FT OF LOT 418, JONES MABRY SUB UNIT 7 LESS R/W; GEO # 181417033000300, LOTS 3, 4, 5, 6, 7, 8, MARY PEARL SUBN.; GEO # 181417030064700, LOT 647, JONES MABRY SUB., UNIT 10; GEO # 181417028067200, N. 1 ACRE OF LOT 614, JONES MABRY SUB, UNIT 10; GEO # 181417030067800, W/2 OF LOT 646 JONES MABRY SUB., UNIT #10; GEO # 181417028064300, E. 59.65 FT. OF LOT 606 W/2 OF LOT 607, JONES MABRY, SUB., UNIT #10; GEO # 181417013047900, 1.50 acres M/L LOT 432, JONES MABRY SUB. 7, LESS West 70 FT. OF South 310 FT. THEREOF; GEO # 181417010042100, 1.66 acres LOT 421, JONES MABRY SUB., UNIT #7; GEO # 181417029063100, LOT 631 JONES MABRY SUB 10; GEO # 181418009000700, E. 40 FT OF W. 120 FT OF S. 150 FT OF TR C, WASH AND MARY SOLOMON PARTN OF SE/4 OF NE/4, SEC 18 18 14; GEO # 181418009000300, W. 40 FT OF S. 150 FT OF TR. C, WASH AND MARY SOLOMON PARTN. OF SE/4 OF NE/4 SEC 18 18 14; GEO # 181418009000500, E. 40 FT OF W. 80 FT OF S. 150 FT, TR. C, WASH MARY SOLOMAN PARTN. OF SE/4 OF NE/4 SEC 18 18 14; GEO # 181418011003800, LOT 38, PRINCE HALL VILLAGE SUB.; GEO # 181418010001000, LOT 10, PRINCE HALL VILLAGE SUB.; GEO # 181418015004600, LOT 46, FAIRY LAND PARK; GEO # 181418015003100, LOT 31, FAIRY LAND PARK; GEO # 181418015006100, LOT 61, FAIRY LAND PARK; GEO # 181418016007600, LOT 76, FAIRY LAND PARK; GEO # 181418016010600, LOT 106, FAIRY LAND PARK; GEO # 181418013007200, LOT 72, FAIRYLAND PARK; GEO # 181418014011400, LOT 114, FAIRY LAND PARK; GEO # 181418015001600, LOT 16, FAIRY LAND PARK; GEO # 181418015001800, LOT 18, FAIRY LAND PARK; GEO # 181418015001900, LOT 19, FAIRY LAND PARK; GEO # 181418015002000, LOT 20, FAIRY LAND PARK; GEO # 181418015002100, LOT 21, FAIRY LAND PARK; GEO # 181418015002200, LOT 22, FAIRY LAND PARK; GEO # 181418015002300, LOT 23, FAIRY LAND PARK; GEO # 181418015003300, LOT 33, FAIRY LAND PARK; GEO # 181418015003500, LOT 35, FAIRY LAND PARK; GEO # 181418015003800, LOT 38, FAIRY LAND PARK; GEO # 181418015004700, LOT 47, FAIRY LAND PARK; GEO # 181418015004800, LOT 48, FAIRY LAND PARK; GEO # 181418015004900, LOT 49, FAIRY LAND PARK; GEO # 181418015005000, LOT 50, FAIRY LAND PARK; GEO # 181418015005100, LOT 51, FAIRY LAND PARK; GEO # 181418015005200, LOT 52, FAIRY LAND PARK; GEO # 181418015005300, LOT 53, FAIRY LAND PARK; GEO # 181418015006300, LOT 63, FAIRY LAND PARK; GEO # 181418015006500, LOT 65, FAIRY LAND PARK; GEO # 181418015006700, LOT 67, FAIRY LAND PARK; GEO # 181418015006800, LOT 68, FAIRY

LAND PARK; GEO # 181418016007700, LOT 77, FAIRY LAND PARK; GEO # 181418016007800, LOT 78, FAIRY LAND PARK; GEO # 181418016008000, LOT 80, FAIRY LAND PARK; GEO # 181418016008100, LOT 81, FAIRY LAND PARK; GEO # 181418016008300, LOT 83, FAIRY LAND PARK; GEO # 181418016009100, LOT 91, FAIRY LAND PARK; GEO # 181418016009200, LOT 92, FAIRY LAND PARK; GEO # 181418016009300, LOT 93, FAIRY LAND PARK; GEO # 181418016009400, LOT 94, FAIRY LAND PARK; GEO # 181418016009500, LOT 95, FAIRY LAND PARK; GEO # 181418016009600, LOT 96, FAIRY LAND PARK; GEO # 181418016010700, LOT 107, FAIRY LAND PARK; GEO # 181418016011000, LOT 110, FAIRY LAND PARK; GEO # 181418015001700, LOT 17, FAIRY LAND PARK; GEO # 181418015003200, LOT 32, FAIRY LAND PARK; GEO # 181418015003400, LOT 34, FAIRY LAND PARK; GEO # 181418015003600, LOT 36, FAIRY LAND PARK; GEO # 181418015003700, LOT 37, FAIRY LAND PARK; GEO # 181418015006200, LOT 62, FAIRY LAND PARK; GEO # 181418015006400, LOT 64, FAIRY LAND PARK; GEO # 181418015006600, LOT 66, FAIRY LAND PARK; GEO # 181418016007900, LOT 79, FAIRY LAND PARK; GEO # 181418016008200, LOT 82, FAIRY LAND PARK; GEO # 181418016009700, LOT 97, FAIRY LAND PARK; GEO # 181418016010800, LOT 108, FAIRY LAND PARK; GEO # 181418016010900, LOT 109, FAIRY LAND PARK; GEO # 181418016011100, LOT 111, FAIRY LAND PARK; 181418016011200, LOT 112, FAIRY LAND PARK; GEO # 181418016011300, LOT 113, FAIRY LAND PARK; GEO # 181418016009000, LOT 90, FAIRY LAND PARK; GEO # 181418015003000, LOT 30, FAIRY LAND PARK; GEO # 181418015004500, LOT 45, FAIRY LAND PARK; GEO # 181418015006000, LOT 60, FAIRY LAND PARK; GEO # 181418016007500, LOT 75, FAIRY LAND PARK; GEO # 181418016009800, LOT 98, FAIRY LAND PARK; GEO # 181418016010500, LOT 105, FAIRY LAND PARK; GEO # 181418015001500, LOT 15, FAIRY LAND PARK; GEO # 181418009001000, West 120 FT. OF North 181.5 FT. OF South 331.5 FT. OF LOT C, WASH MARY SOLOMON PARTN. OF SE/4 OF NE/4 SEC 18 18 14; GEO # 181421021002200, S. 10 FT OF W. 10 FT OF LOT 6, CUTLIFF SUB.; GEO # 181421001038800, A TR. OF LAND MEAS. 10.45 FT. ON N. AND 10.61 FT. ON S. OF THE S. 45 FT. OF N. 183 FT. OF W. 186.98 FT. OF LOT 115, JONES MABRY SUBN.; GEO # 181421033022900, South 10 FT. OF LOT 77, CARVER HEIGHTS., UNIT 2; GEO # 181421019010200, 0.028 ACS. M/L LOT 22, J.R. RUSSELL SUB. UNIT 1, LESS THAT PART TAKEN FOR I 49 AS DESC. ON INST. #2430056, ALSO LESS THAT PART TAKEN FOR STATE PROJ. H.011105 ON INST. #2515895; GEO # 181421019009600, 0.033 ACS. M/L LOT 46, J.R. RUSSELL SUB. UNIT 1, LESS I 49 R/W AS DESC. IN INST. #2430058, ALSO LESS THAT PART TAKEN FOR STATE PROJ. H.011105 IN INST. #2518153; GEO # 181421011021100, A TRACT OF LAND IN LOT 136, JONES MABRY SUB., UNIT #2, PER ASSRS CITY PLAT; 181421019005200, East 25.3 FT. OF LOT 6, J. R. RUSSELL SUBN., UNIT 1; GEO # 181421011023200, E. 53.3 FT MEASURED ALONG STREET OF LOT 136, JONES MABRY SUB., UNIT 2, LESS TRACT OFF E. SIDE WHICH MEASURES 40 FT ON BOTH STREET REAR LINE; GEO # 181421019009200, 0.108 ACS. M/L LOT 23, J.R. RUSSELL SUB., UNIT NO. 1, LESS I 49 R/W AS DESC. IN INST. #2430283, ALSO LESS THAT PART TAKEN FOR STATE PROJ. H.011105 IN INST. #2508180; GEO # 181421001021100, 0.11 acres M/L N. 120 FT OF E. 40 FT OF LOT 95, JONES MABRY SUB., UNIT 2; GEO # 181421001029400, S. 40 FT OF N. 228 FT OF W. 133 FT OF LOT 108, JONES MABRY SUB., UNIT 2, LESS R/W; GEO # 181421018021300, East 40 FT. OF West 160 FT. OF South 125 FT. OF LOT 153, JONES MABRY SUB, UNIT 2; GEO # 181421001028400, West 50 FT OF East 100 FT OF South 100 FT OF LOT 108, JONES MABRY SUB., UNIT #2; GEO # 181421032016100,

LOT 161, LINCOLN MEMORIAL SUBN., LESS R/W; GEO # 181421001028900, S. 135 FT OF N. 280 FT OF E. 40 FT OF W. 73 FT OF LOT 113, JONES MABRY SUB., UNIT #2; GEO # 181421034020500, N. 40 FT. OF LOT 103, CARVER HTS. SUB., UNIT 2; GEO # 181421034021500, S. 40 FT OF LOT 171, CARVER HTS SUB UNIT 2; GEO # 181421018024400, A TRACT OF LAND IN LOT 146, JONES MABRY SUB. UNIT #2. PER ASSRS CITY PLAT; GEO # 181421018023700, East 132 FT. OF North 45 FT. OF LOT 141, JONES MABRY SUB., UNIT 2; 181421032021500, N. 40 FT OF LOT 56, LINCOLN MEMORIAL SUB.; GEO # 181421032022900, N. 40 FT OF LOT 123, LINCOLN MEMORIAL SUBN.; GEO # 181421032023600, South 45 FT OF LOT 43, LINCOLN MEMORIAL SUB.; GEO # 181421039002900, LOT 29, LAND OF NOD SUBN; GEO # 181421001030800, West 50 FT OF South 125 FT OF LOT 85, JONES MABRY SUB. UNIT #2; GEO # 181421019008100, 0.778 ACS. M/L LOT 33, J.R. RUSSELL SUB., UNIT NO. 1, LESS THAT PART TAKEN FOR STATE PROJ. H.011105 ON INST. #2502493; GEO # 181421021002400, W. 20 FT OF LOT 11 AND E. 24 FT OF LOT 12, CUTLIFF SUB.; GEO # 181421019010000, 0.159 ACS. M/L LOT 24, J.R. RUSSELL SUB. UNIT 1, LESS THAT PART TAKEN FOR STATE PROJ. H.011105 ON INST. #2515895; GEO # 181421038003200, LOT 32, LAND OF NOD SUB.; GEO # 181421001029300, N. 45 FT. OF S. 95 FT. OF E. 19 FT. OF LOT 113 AND N. 45 FT. OF S. 95 FT. OF LOT 114, JONES MABRY SUBN., UNIT #2; GEO # 181421001025100, N. 55 FT OF S. 110 FT OF W. 1/2 OF LOT 64, JONES MABRY SUB., UNIT #2, LESS W'LY PORTION THEREOF, MEAS. 5.85 FT. ALONG N. LINE 6.05 FT. ALONG S. LINE; GEO # 181421023000600, LOT 6, TINER SUBN.; GEO # 181421003000200, LOT 2, HICKS BAKER SUBN., LESS R/W; GEO # 181421019009000, 0.175 ACS. M/ L LOT 25, J.R. RUSSELL SUB., UNIT NO. 1, LESS THAT PART TAKEN FOR STATE PROJ. H.011105 ON INST. #2503918; GEO # 181421018026700, W. 50 FT OF E. 100 FT OF N. 150 FT OF LOT 143, JONES MABRY SUBN., UNIT 2; 181421023000400, LOT 4, TINER SUBN.; GEO # 181421023000500, LOT 5, TINER SUBN.; GEO # 181421019000200, LOT 2, J. R. RUSSELL SUBN., UNIT 1; GEO # 181421019000300, LOT 3, J. R. RUSSELL SUBN., UNIT #1; GEO # 181421019002600, LOT 26, J. R. RUSSELL SUBN., UNIT 1; GEO # 181421019002800, LOT 28, J. R. RUSSELL SUBN., UNIT 1; GEO # 181421020005300, LOT 53, J. R. RUSSELL SUB, UNIT 1; GEO # 181421039001100, LOT 11, LAND OF NOD SUBN.; GEO # 181421018029900, E. 46.33 FT OF W. 92.66 FT OF THE S. 165 FT OF LOT 166, JONES MABRY SUBN., UNIT #2; GEO # 181421039001500, LOT 15, LAND OF NOD SUB.; GEO # 181421023000300, LOT 3, TINER SUBN.; GEO # 181421039001200, LOT 12, LAND OF NOD SUBN.; GEO # 181421039011100, LOT 111, LAND OF NOD SUBN; GEO # 181421018027700, W. 49FT. OF S. 162 FT. OF N. 180 FT. OF LOT 174 E. 1 FT. OF S. 162 FT. OF N. 180 FT. OF LOT 175, JONES MABRY SUBN., UNIT 2; GEO # 181421034019900, LOT 199, CARVER HEIGHTS SUBN., UNIT #2; GEO # 181421033020900, LOT 209, CARVER HEIGHTS SUB, UNIT 2; GEO # 181421011021000, A TRACT OF LAND IN E. SIDE OF LOT 136, JONES MABRY SUB., UNIT #2 PER ASSRS CITY PLAT; GEO # 181421032010500, LOT 105, LINCOLN MEMORIAL SUBN.; GEO # 181421019001000, LOT 10, J. R. RUSSELL SUB 1; GEO # 181421033009600, LOT 96, CARVER HEIGHTS SUB, UNIT #2; GEO # 181421032010300, LOT 103, LINCOLN MEMORIAL SUB; GEO # 181421033022300, LOT 223, CARVER HTS. SUB., UNIT #2; GEO # 181421032011000, LOT 110, LINCOLN MEMORIAL SUB.; GEO # 181421032010800, LOT 108, LINCOLN MEMORIAL SUBN.; GEO # 181421032012800, LOT 128, LINCOLN MEMORIAL SUB.; GEO # 181421034010900, LOT 109, CARVER HEIGHTS SUB, UNIT 2; GEO # 181421032017900, LOT 179, LINCOLN MEMORIAL SUB; GEO # 181421032018100, LOT 181, LINCOLN MEMORIAL SUB.; GEO # 181421032014800, LOT 148, LINCOLN MEMORIAL



SUB.; GEO # 181421032014900, LOT 149, LINCOLN MEMORIAL SUB.; GEO # 181421032016800, LOT 168, LINCOLN MEMORIAL SUBN.; GEO # 181421032013000, LOT 130, LINCOLN MEMORIAL SUB.; GEO # 181421035003000, LOT 30, GOOD FRIEND SUBN.; GEO # 181421032017200, LOT 172, LINCOLN MEMORIAL SUB.; GEO # 181421035005700, LOT 57, GOOD FRIEND SUBN.; GEO # 181421035002900, LOT 29, GOOD FRIEND SUB.; GEO # 181421032012900, LOT 129, LINCOLN MEMORIAL SUBN.; GEO # 181421035002800, LOT 28, GOOD FRIEND SUBD.; GEO # 181421035001700, LOT 17, GOOD FRIEND SUB.; GEO # 181421035000700, LOT 7, GOOD FRIEND SUBN.; GEO # 181421035006800, LOT 68, GOOD FRIEND SUBN.; GEO # 181421035005500, LOT 55, GOOD FRIEND SUBN.; GEO # 181421035005400, LOT 54, GOOD FRIEND SUBD.; GEO # 181421035008000, LOT 80, GOOD FRIEND SUB.; GEO # 181421033006900, LOT 69, CARVER HEIGHTS SUB., UNIT #2; GEO # 181421032019200, LOT 192, LINCOLN MEMORIAL SUBN.; GEO # 181421035007600, LOT 76, GOOD FRIEND SUBN.; GEO # 181421035007200, LOT 72, GOOD FRIEND SUB.; GEO # 181421035007900, LOT 79, GOOD FRIEND SUB.; GEO # 181421034002600, LOT 26, CARVER HEIGHTS SUBN., UNIT 2; GEO # 181421033007000, LOT 70, CARVER HTS. SUB. UNIT 2; GEO # 181421034003200 LOT 32, CARVER HEIGHTS SUB UNIT 2; 181421033006800 LOT 68, CARVER HEIGHTS SUB 2; GEO # 181421033007100, LOT 71, CARVER HTS. SUB., UNIT #2; GEO # 181421039003000, LOT 30, LAND OF NOD SUBN; GEO # 181421018022200, S. 40 FT. OF N. 85 FT. OF LOT 141, JONES MABRY SUB UNIT 2; GEO # 181421001038300, N. 125 FT. OF E. 100 FT. OF W/2 OF LOT 70, JONES MABRY SUBD., UNIT #2; GEO # 181421001034900, E. 73 FT OF W. 132 FT OF N. 177 FT OF LOT 69, JONES MABRY SUB, UNIT 2; GEO # 181421023000100, LOT 1, TINER SUBN.; GEO # 181421012000500, LOT, 5 WHITTAKER PARK, LESS R/W; GEO # 181421012000400, LOT 4, WHITTAKER PARK, LESS R/W; GEO # 181421012000300 LOT 3, WHITTAKER PARK, LESS R/W; GEO # 181421032003300, LOTS 33 AND 34, LINCOLN MEMORIAL SUB.; GEO # 181421032024200, LOTS 24 AND 25, LINCOLN MEMORIAL SUBN.; GEO # 181421032024500, LOTS 31 AND 32, LINCOLN MEMORIAL SUB.; GEO # 181421032024100, LOTS 106 AND 107, LINCOLN MEMORIAL SUBN.; GEO # 181421032013400, LOTS 134 AND 135, LINCOLN MEMORIAL SUB.; GEO # 181421035004900, LOTS 49 50, GOOD FRIEND SUB.; GEO # 181421011021700, West 57.56 FT. OF East 177.27 FT. OF LOT 178, JONES MABRY SUB., UNIT 2; GEO # 181421018029700, N. 165 FT OF W. 139 FT OF LOT 166, JONES MABRY SUB, UNIT 2; GEO # 181421018032400, E. 132 FT. OF N. 255 FT. E. 29 FT. OF S. 175 FT. OF LOT 164, JONES MABRY SUBN., UNIT #2. LESS S. 25 FT. R/W; GEO # 181421018030500, South 100 FT OF North 255 FT OF West 300 FT OF East 493.6 FT OF LOT 190, JONES MABRY SUB., UNIT #2; GEO # 181421001040500, 0.675 AC. M/L LOT 126, JONES MABRY SUBDIVISION, UNIT 2, LESS THAT PART TAKEN FOR I 49 R/W AS DESC. IN INST. #2474962; GEO # 181421001013800, 1.00 ACRE E/2 OF LOT 128, JONES MABRY SUB., UNIT 2; GEO # 181421011022200, W. 77.53 FT OF LOT 180 E. 56.77 FT OF LOT 181, JONES MABRY SUB., UNIT #2; GEO # 181421011022400, W. 150.55 FT, MEASURED ON S. LINE, OF LOT 181, JONES MABRY SUB UNIT 2; GEO # 181421018026500, E. 117 FT OF S. 180 FT OF LOT 143, JONES MABRY SUB., UNIT 2; GEO # 181421018033500, LOT 153, JONES MABRY SUBN. #2, LESS W. 40 FT. OF N. 125 FT. LESS W. 200 FT. OF S. 125 FT. THEREOF; GEO # 181417029066700, THE N. 89.57 FT. OF S. 179.14 FT. OF LOT 641, JONES MABRY SUBN., UNIT #10. The above described tracts containing 119.0604 Gross acres and 59.5302 Net acres more or less, situated in Sections 16,17,18 AND 21, Township 18 North, Range 14 West, Caddo Parish, Louisiana.

Those certain minerals reserved in sale by City and Parish tracts, situated in Sections 16,17,18, AND 21, Township 18 North, Range 14 West, being described as GEO # 181416001012500, PT LOTS 50,51 JONES MABRY SUB; GEO # 181416001016400, PT LOT 51 JONES MABRY SUB; GEO # 181416001017500, PT LOT 42 JONES MABRY SUB; GEO # 181416001017600, W/100 AC LOT 42 JONES MABRY SUB; GEO # 181416001025000, PT LOT 43 JONES MABRY SUB; GEO # 181416008000400, LOT D, THOMAS J. HAWKINS SUB; GEO # 181416012022800, 1.78 ACS LOT 228 JONES MABRY SUB #3; GEO # 181416012027300, PT LOT 217 JONES MABRY SUB #3; GEO # 181416014033200, PT LOTS 244,245 JONES MABRY SUB #3; GEO # 181416017032200, PT LOT 258 JONES MABRY SUB #3; GEO # 181416024030100, N/45 feet LOT 279 JONES MABRY SUB #3; GEO # 181416024030700 PT LOT 279 JONES MABRY SUB #3; GEO # 181416024031600, N/100 feet LOT 288 JONES MABRY SUB #3; GEO # 181416026000100, LOT A, VINSON PARK SUB; GEO # 181416029037100, PT LOT 297 JONES MABRY SUB #3; GEO # 181416029039800, PT LOTS 323,324 JONES MABRY SUB #3; GEO # 181416029039900, PT LOT 324 JONES MABRY SUB #3; GEO # 181416029040500, PT LOT 321 JONES MABRY SUB #3; GEO # 181416030000200, LOT 2 COOPER HILLS SUB; GEO # 181416030000400, LOT 4 COOPER HILLS SUB; GEO # 181416030001100, LOT 11 COOPER HILLS SUB; GEO # 181416035037700, W/150 feet LOT 330 JONES MABRY SUB #3; GEO # 181416045033500, W/2 LOT 304 JONES MABRY SUB #3; GEO # 181416045035900, PT LOT 332 JONES MABRY SUB #3; GEO # 181416045036000, PT LOT 332 JONES MABRY SUB #3; GEO # 181416045036700, S/2 E/2 LOT 304 JONES MABRY SUB #3; GEO # 181416045037900, PT LOT 331 JONES MABRY SUB #3 LESS R/W; GEO # 181416045038200, LOT A, JONES MABRY SUB #3; GEO # 181416046000800, LOT 8 BUNCHE SUB #1; GEO # 181416046000900, LOT 9 BUNCHE SUB #1; GEO # 181416046001000, LOT 10 BUNCHE SUB #1; GEO # 181416046001900, LOT 19 BUNCHE SUB #1; GEO # 181416046002000, LOT 20 BUNCHE SUB #1; GEO # 181416046002100, LOT 21 BUNCHE SUB #1; GEO # 181416046002200, LOT 22 BUNCHE SUB #1; GEO # 181416056003000, LOT 30 MCCAIN CREEK ESTATES #1; GEO # 181416056003300, LOT 33 MCCAIN CREEK ESTATES #1; GEO # 181416057006400, LOT 64 MCCAIN CREEK ESTATES #2; GEO # 181417003000300, LOT 3, JOSEPH REDD SUBN.; GEO # 181417011000300, LOT C, REED SUBN.; GEO # 181417011000500, LOT E, REED SUBN.; GEO # 181417011000600, LOT F REED SUB; GEO # 181417011000700, LOT G, REED SUBN.; GEO # 181417011000900, LOT I, REED SUBN.; GEO # 181417011001000, LOT J, REED SUBN.; GEO # 181417011001100, LOT K, REED SUBN.; GEO # 181417011001200, LOT L, REED SUBN.; GEO # 181417013046900, S/2 OF LOT 457, JONES MABRY SUBN., UNIT 7, IN SEC 17 18 14; GEO # 181417016000600, LOT 6, MARY JOE PLACE SUBN.; GEO # 181417019000700, LOT 7, KNOX SUBN.; GEO # 181417026000200, LOT 2 A, ALEX LEE PARK #1A; 181417028065100, South 65 FT OF E. 1 AC OF LOT 618, JONES MABRY SUB 10; GEO # 181417028066100, W. 60 FT OF E/2 OF LOT 596, JONES MABRY SUBN., UNIT #10; GEO # 181417028066200, E/2 OF LOT 596, LESS W. 60 FT. THEREOF, JONES MABRY SUBN., UNIT 10; GEO # 181417029064900, N. 200 FT OF LOT 624 N. 150 FT OF S. 356.9 FT OF LOT 624, JONES MABRY SUB., UNIT #10; GEO # 181417030066800, W. 1/2 OF LOT 659, JONES MABRY SUB, UNIT 10; GEO # 181417030067400, W/2 LOT 661 JONES MABRY SUB #10 LESS DITCH; GEO # 181417030068000, South 40 FT. OF North 80 FT. OF E/2 OF LOT 646, JONES MABRY SUB., UNIT #10; GEO # 181417030069100, South 45 FT. OF North 315 FT. OF LOT 664, JONES MABRY SUB., UNIT 10; GEO # 181417030069600, E/2 LOT 648 JONES MABRY SUBN. 10; GEO # 181417030072300, N. 151.19 FT. OF S.

302.38 FT. OF W. 72.16 FT. OF LOT 660, JONES MABRY SUB, UNIT 10; GEO # 181417043000300, .619 ACS. LOT 3, W. W. JONES SUB., UNIT #1, LESS DRAINAGE DITCH; GEO # 181417043002800, W/2 OF LOT 8, W. W. JONES SUB., UNIT #1, LESS DRAINAGE DITCH R/W; GEO # 181417043003100, E. 131.94 FT OF LOT 9, LESS DRAINAGE DITCH R/W, W. W. JONES SUBN., UNIT NO. 1; GEO # 181417043004400, LOT 6, LESS N. 50 FT. THEREOF, W. W. JONES SUBN. UNIT NO. 1, LESS R/W; GEO # 181417046000400, LOT D, LEGARDY OAKS #2; GEO # 181417047000600 LOT 6, LEGARDY HILLS SUB., UNIT #1; GEO # 181417047000400, LOT 4, LEGARDY HILLS SUB. UNIT #1; GEO # 181417047003200, LOT 32 LEGARDY HILLS SUB #1; GEO # 181417047003300, LOT 33, LEGARDY HILLS SUBN., UNIT 1; GEO # 181417047004300 LOT 43 LEGARDY HILLS SUB #1; GEO # 181417047005300, LOT 53, LEGARDY HILLS SUB., UNIT 1; GEO # 181417047005500, LOT 55, LEGARDY HILLS SUBN., UNIT 1; GEO # 181417047005800, LOT 58, LEGARDY HILLS SUB., UNIT 1; GEO # 181417047006700, LOT 67, LEGARDY HILLS SUBN UNIT #1; GEO # 181417047008100, LOT 81, LEGARDY HILLS SUBN., UNIT 1; GEO # 181417050009100, LOT 91, LEGARDY HILLS SUB UNIT 2; GEO # 181417050009300, LOT 93, LEGARDY HILLS SUBN., UNIT 2; GEO # 181417050011800, LOT 118, LEGARDY HILLS SUBN., UNIT 2; GEO # 181417050012300, LOT 123, LEGARDY HILLS SUBN., UNIT 2; GEO # 181417050012400, LOT 124, LEGARDY HILLS SUBN., UNIT 2; GEO # 181417050012900, LOT 129, LEGARDY HILLS SUBN., UNIT 2; GEO # 181417051000200, LOT 2, COOPERVILLE SUBN, UNIT #1; GEO # 181417051001500, LOT 15 COOPERVILLE SUB #1; GEO # 181417052002000, LOT 20 COOPERVILLE SUB #2; GEO # 181417052002100, LOT 21, COOPERVILLE SUBN., UNIT 2; GEO # 181417052005800, LOT 58, COOPERVILLE SUBN., UNIT 2; GEO # 181417052005900, LOT 59, COOPERVILLE SUBN., UNIT 2; GEO # 181417052006400, LOT 64, COOPERVILLE SUBN., UNIT 2; GEO # 181417052006500, LOT 65, COOPERVILLE SUBN., UNIT 2; GEO # 181417052010700, LOT 107 COOPERVILLE SUB #2; GEO # 181417053003600, LOT 36, COOPERVILLE SUB., UNIT #2; GEO # 181417053016600, LOT 166, COOPERVILLE SUBN., UNIT 2; GEO # 181418001009500, LOT 95 East Z LIVING SUB; GEO # 181418001009600, LOT 96 East Z LIVING SUB; GEO # 181418002001600, LOT 16 East Z LIVING SUB; GEO # 181418002001700, LOT 17 East Z LIVING SUB; GEO # 181418002001800, LOT 18, East Z LIVING SUB; GEO # 181418002014800, LOT 148 East Z LIVING SUB; GEO # 181418002015300, LOT 153 East Z LIVING SUB; GEO # 181418002015900, LOT 143 East Z LIVING SUB; GEO # 181418003003700, LOT 37 East Z LIVING SUB; GEO # 181418003013600, LOT 136 East Z LIVING SUB; GEO # 181418004000200, LOT 2 JOHNNIE ROBINSON SUB; GEO # 181418004000300, LOT 3 JOHNNIE ROBINSON SUB; GEO # 181418004000600, LOT 6 JOHNNIE ROBINSON SUB; GEO # 181418004000800, LOT 8 JOHNNIE ROBINSON SUB; GEO # 181418007018700, LOT 187, East Z LIVING SUB #2; GEO # 181418010000700, LOT 7, PRINCE HALL VILLAGE SUBN; GEO # 181418011001800, LOT 18, PRINCE HALL VILLAGE SUBN.; GEO # 181418011003100, LOT 31, PRINCE HALL VILLAGE SUB.; GEO # 181418011006600, LOT 66 PRINCE HALL VILLAGE SUB; GEO # 181418013000600, LOT 6 FAIRYLAND PARK AND LESS R/WAY; GEO # 181418013000700, LOT 7, FAIRYLAND PARK; GEO # 181418014011500, LOT 115, FAIRYLAND PARK SUBN.; GEO # 181418014011800, LOT 118, FAIRYLAND PARK SUB.; GEO # 181418014012100 LOTS 116 AND 117, FAIRY LAND PARK; GEO # 181418021005700, LOT 57 COOPER HEIGHTS SUB #3; GEO # 181418022007800, LOT 78 COOPER HEIGHTS SUB #4; GEO # 181420010071000, PT LOT 478 JONES MABRY SUB #8; GEO # 181421001015600, PT LOT 55 JONES MABRY SUB #2; GEO # 181421001018100, E/2 LOT 130 JONES MABRY SUB #2; GEO # 181421001031500, LOT 106, LESS E/52 feet OF S/125 feet, JONES

MABRY SUB #2; GEO # 181421001035700, S/205 feet LOT 117 JONES MABRY SUB #2; GEO # 181421001036100, W/55 feet N/130 feet LOT 114 AND E/22 feet N/130 feet LOT 113 JONES MABRY SUB #2; GEO # 181421001036200, PT LOT 113 JONES MABRY SUB #2; GEO # 181421001036300, PT LOT 76 JONES MABRY SUB #2; GEO # 181421001036400, S/120.0 feet E/52.8 feet W/158.4 feet LOT 76 JONES MABRY SUB #2; GEO # 181421001036700, S/205 feet E/236 feet LOT 116 JONES MABRY SUB #2; GEO # 181421001038700, PT LOT 108 JONES MABRY SUB #2; GEO # 181421002000100, LOT 1, COOPER HEIGHTS SUB; GEO # 181421003001400, PT LOT 12 HICKS BAKER SUB; GEO # 181421018021600, S/40 feet LOT 141 JONES MABRY SUB; GEO # 181421018028400, PT LOT 174 JONES MABRY SUB #2; GEO # 181421019000500, LOT 5 J.R. RUSSELL SUB #1; GEO # 181421032001900, LOT 19 LINCOLN MEMORIAL SUB; GEO # 181421032007100, LOTS 71,72 LINCOLN MEMORIAL SUB; GEO # 181421032009300, LOT 93 LINCOLN MEMORIAL SUB; GEO # 181421032010200, LOT 102, LINCOLN MEMORIAL SUB; GEO # 181421032011500, LOT 15 LINCOLN MEMORIAL SUB; GEO # 181421032012100, LOT 121 LINCOLN MEMORIAL SUB; GEO # 181421032017400, LOT 174 LINCOLN MEMORIAL SUB; GEO # 181421032020000, LOT 200 LINCOLN MEMORIAL SUB; GEO # 181421032021400, N/20 feet LOT 55 AND S/20 feet LOT 56 LINCOLN MEMORIAL SUB; GEO # 181421032022700, S/40 feet LOT 114 LINCOLN MEMORIAL SUB; GEO # 181421033006100, LOT 61 CARVER HEIGHTS SUB #2; GEO # 181421033012500, LOT 125 CARVER HEIGHTS SUB; GEO # 181421033014800, LOT 148 CARVER HEIGHTS SUB #2; GEO # 181421033021600, LOT 216 CARVER HEIGHTS SUB #2; GEO # 181421033023000, PT LOTS 226,227 CARVER HEIGHTS SUB; GEO # 181421034012100, LOT 121 CARVER HEIGHTS SUB #2; GEO # 181421034018900, LOT 189 CARVER HEIGHTS SUB #2; GEO # 181421034020800, W/40 feet LOT 191 CARVER HEIGHTS SUB #2; GEO # 181421034021400, S/20 feet LOT 170 AND N/20 feet LOT 171 CARVER HEIGHTS SUB #2; GEO # 181421034021900, LOTS 174,175 CARVER HEIGHTS SUB #2; GEO # 181421035001100, LOT 11 GOOD FRIEND SUB; GEO # 181421035001500, LOT 15 GOOD FRIEND SUB; GEO # 181421035001800, LOT 18 GOOD FRIEND SUB; GEO # 181421035004500, LOT 45 GOOD FRIEND SUB; GEO # 181421035004600, LOT 46 GOOD FRIEND SUB; GEO # 181421035007100, LOT 71 GOOD FRIEND SUB; GEO # 181421035007400, LOTS 74,75 GOOD FRIEND SUB; GEO # 181421038000500, LOT 5, LAND OF NOD SUB; GEO # 181421038000700, LOT 7, LAND OF NOD SUB; GEO # 181421048000100, LOT 1 RUSSELL HEIGHTS #2; GEO # 181421034018500, LOTS 185,186 CARVER HEIGHTS SUB #2. The above described tracts containing 61.6344 Gross acres and 30.8172 Net acres more or less, situated in Sections 16,17,18 AND 21, Township 18 North, Range 14 West, Caddo Parish, Louisiana.

The aggregate of the above described tracts is **180.6948 Gross acres** and **90.3474 Net acres**, all as more particularly outlined on a plat on file in the Office of Mineral Resources, Department of Natural Resources. The description is based on information provided by the State Agency regarding location and ownership of surface and mineral rights. All bearings, distances and coordinates, if applicable, are based on Louisiana Coordinate System of 1927, (North or South Zone).

NOTE: The above description of the Tract nominated for lease has been provided and corrected, where required, exclusively by the nomination party. Any mineral lease selected from this Tract and awarded by the Louisiana State Mineral and Energy Board shall be without warranty of any kind, either



express, implied, or statutory, including, but not limited to, the implied warranties of merchantability and fitness for a particular purpose. Should the mineral lease awarded by the Louisiana State Mineral and Energy Board be subsequently modified, cancelled or abrogated due to the existence of conflicting leases, operating agreements, private claims or other future obligations or conditions which may affect all or any portion of the leased Tract, it shall not relieve the Lessee of the obligation to pay any bonus due thereon to the Louisiana State Mineral and Energy Board, nor shall the Louisiana State Mineral and Energy Board be obligated to refund any consideration paid by the Lessor prior to such modification, cancellation, or abrogation, including, but not limited to, bonuses, rentals and royalties.

NOTE: Lessee, it's successors or assigns, may produce oil, gas and other minerals from the leased premises by drilling from a surface location on other lands, but notwithstanding any other provision of this lease, Lessee, it's successors or assigns, shall not use the surface of the Lessor's property for drilling or any other operations without prior written permission of Lessor, which permission may be withheld at Lessor's discretion.

NOTE: Notwithstanding anything to the contrary herein contained, at the end of the primary term or any extension thereof by operations, if the Commission of Conservation of the State of Louisiana establishes a drilling unit which included a part of the land herein leased, the production of oil, gas and other minerals from such unit shall maintain this lease in full force and effect only as to such portions of the leased land embraced in said pooled unit; and this lease shall expire as to that part of the land herein leased not included in such unit; and lessee, its successors and assigns agrees to relinquish by formal instrument any portion of the leased land not included in a unit created by the Commission of Conservation while this lease is in effect.

NOTE: Upon the expiration of the primary term hereof or any extension thereof by operations, this lease shall automatically terminate and be of no further force or effect except as to all that part of the leased premises then included within the geographical boundaries of a producing unit duly established by governmental agency or authority having jurisdiction, from the surface of the earth to a depth of 100 feet below the deepest depth from which any well commenced during the primary term hereof on the leased premises or on lands pooled therewith is completed and from which there is production in paying quantities, such depth determination to be made on a unit by unit basis. In the absence of units so established, this lease shall terminate except as to 40 acres around each producing oil well and 160 acres around each producing or shut-in gas well located on the leased premises, in as near the form of a square as is practicable, from the surface of the earth down to a depth of 100 feet below the deepest depth from which said well or wells are completed and from which there is production in paying quantities, such depth determination to be made on a well by well basis.

NOTE: There will be a requirement of a minimum bonus of \$3,000 per acre and a minimum royalty of 25%.

NOTE: The City of Shreveport maintains fifty percent (50%) ownership of mineral rights only.

Applicant: CYPRESS ENERGY PARTNERS, LLC to Agency and by Resolution from the City Of Shreveport authorizing the Mineral Board to act in its behalf

Bidder	Cash Payment	Price/ Acre	Rental	Oil	Gas	Other



