

TRACT 45786 - Cameron Parish, Louisiana

A portion of all State owned lands, including high and marsh lands and land now or formerly constituting the beds and bottoms of any water body, within the boundaries of the Rockefeller Wildlife Refuge and Game Preserve, not presently under mineral lease by the State of Louisiana on May 8, 2024, situated in Cameron Parish, Louisiana, and described as follows: Beginning at a point lying within the Rockefeller Wildlife Refuge, having Coordinates of X = 1,589,627.91 and Y = 371,127.81; thence South 55 degrees 45 minutes 06 seconds East approximately 2,562 feet to a point on the boundary of said Rockefeller Wildlife Refuge; thence South approximately 11,310 feet along the boundary of said Rockefeller Wildlife Refuge to a point of intersection with a line having a bearing of North 34 degrees 12 minutes 58 seconds East; thence South 34 degrees 12 minutes 58 seconds West approximately 136 feet to a point having Coordinates of X = 1,591,469.57 and Y = 358,262.28; thence North 55 degrees, 53 minutes, 50 seconds West 5,368.59 feet to a point having Coordinates of X = 1,587,025.21 and Y = 361,272.34; thence North 55 degrees, 32 minutes, 42 seconds West 3,398.20 feet to a point having Coordinates of X = 1,584,222.16 and Y = 363,194.90; thence North 34 degrees, 16 minutes, 19 seconds East 9,599.65 feet to the point of beginning, containing approximately **1,259 acres**, all as more particularly outlined on a plat on file in the Office of Mineral Resources, Department of Natural Resources. All bearings, distances and coordinates are based on Louisiana Coordinate System of 1927, (South Zone).

NOTE: The above description of the Tract nominated for lease has been provided and corrected, where required, exclusively by the nomination party. Any mineral lease selected from this Tract and awarded by the Louisiana State Mineral and Energy Board shall be without warranty of any kind, either express, implied, or statutory, including, but not limited to, the implied warranties of merchantability and fitness for a particular purpose. Should the mineral lease awarded by the Louisiana State Mineral and Energy Board be subsequently modified, cancelled or abrogated due to the existence of conflicting leases, operating agreements, private claims or other future obligations or conditions which may affect all or any portion of the leased Tract, it shall not relieve the Lessee of the obligation to pay any bonus due thereon to the Louisiana State Mineral and Energy Board, nor shall the Louisiana State Mineral and Energy Board be obligated to refund any consideration paid by the Lessor prior to such modification, cancellation, or abrogation, including, but not limited to, bonuses, rentals and royalties.

NOTE: This tract is located in the Rockefeller Wildlife Refuge and Game Preserve under the jurisdiction of the Louisiana Department of Wildlife and Fisheries which has promulgated rules and regulations for the protection of game and wildlife on the aforesaid Tract and, therefore, shall be subject to said rules and regulations, a copy of which may be obtained from the Department of Wildlife and Fisheries. In addition to the specific rules and regulations applicable, the following shall apply regarding operations under this mineral lease:

1. Compliance with the Rockefeller mineral regulations shall be required.
2. No surface activities will be allowed in the vicinity of the Headquarters and associated facilities without written authorization from the Department.
3. Board road access will be required when feasible as determined by the Department.
4. In the event that board road access is not feasible, existing canals and waterways will be utilized to access and drill the proposed well location. In the event the well location obstructs navigation, a maximum of 350 feet of new canal dredging will be allowed in an effort to eliminate the navigation obstruction.
5. Compensatory mitigation will be required for unavoidable wetland losses.
6. No discharges will be allowed, a containerized close loop system will be required.
7. Seasonal restrictions may be imposed within specific management units dependent upon wildlife population levels.
8. All spoil materials generated during dredging operations shall be placed at sites determined by the Department, additionally, the Department shall have discretion to require the use of a hydraulic dredge or spray dredge.
9. Prior to submitting application for wetland permits to Federal and State permitting agencies the leaseholder shall coordinate project details with the Department of Wildlife and Fisheries. Contact person for the Department will be Mike Perot at (225) 765-3978.

NOTE: This tract is subject to The Louisiana Department of Wildlife and Fisheries (LDWF) reduced standard mineral lease minimums for 2024 on coastal wildlife management areas and refuges (WMAs). LDWF's mineral lease minimums for coastal WMAs are as follows:

- Minimum Royalty for years 1-3 is 18.5% (reduction will run for 3 years on 1st production)
- After 3 years production, Minimum Royalty increases to 20.5%
- Production must begin within 24 months, otherwise Minimum Royalty will revert to 22.5%
- Royalty reduction will end January 1, 2025

NOTE: The State of Louisiana does hereby reserve, and this lease shall be subject to, the imprescriptible right of surface use in the nature of a servitude in favor of the Department of Natural Resources, including its Offices and Commissions, for the sole purpose of implementing, constructing, servicing and maintaining approved coastal zone management and/or restoration projects. Utilization of any and all rights derived under this lease by the mineral lessee, its agents, successors or assigns, shall not

interfere with nor hinder the reasonable surface use by the Department of Natural Resources, its Offices or Commissions, as herein above reserved.

Applicant: CYPRESS ENERGY PARTNERS, LLC

Bidder	Cash Payment	Price/Acre	Rental	Oil	Gas	Other

Legend

- 24050013
- Wildlife
- Counties

VERMILLION

T15S - R2W

T16S - R2W

CAMERON

T16S - R3W

P.O.B.

Rockefeller Wildlife Refuge

DYSON BAYOU

JOSEPHINE BAYOU

0 2,000 Feet



Office of Mineral Resources, Acres: 1259 Tract Number: 45786

TRACT 45787 - Cameron Parish, Louisiana

A portion of all State owned lands, including high and marsh lands and land now or formerly constituting the beds and bottoms of any water body, within the boundaries of the Rockefeller Wildlife Refuge and Game Preserve, not presently under mineral lease by the State of Louisiana on May 8, 2024, situated in Cameron Parish, Louisiana, and described as follows: Beginning at a point lying within the Rockefeller Wildlife Refuge, having Coordinates of X = 1,579,702.94 and Y = 366,129.04; thence South 57 degrees 00 minutes 22 seconds East 5,388.19 feet to a point having Coordinates of X = 1,584,222.16 and Y = 363,194.90; thence South 55 degrees 32 minutes 42 seconds East 3,398.20 feet to a point having Coordinates of X = 1,587,024.21 and Y = 361,272.34; thence South 34 degrees 07 minutes 37 seconds West 9,569.79 feet to a point having Coordinates of X = 1,581,655.28 and Y = 353,350.51; thence North 55 degrees 52 minutes 10 seconds West 8,806.80 feet to a point having Coordinates of X = 1,574,365.35 and Y = 358,291.82; thence North 34 degrees 15 minutes 26 seconds East 9,482.19 feet to the point of beginning, containing approximately **1,928.93 acres**, all as more particularly outlined on a plat on file in the Office of Mineral Resources, Department of Natural Resources. All bearings, distances and coordinates are based on Louisiana Coordinate System of 1927, (South Zone).

NOTE: The above description of the Tract nominated for lease has been provided and corrected, where required, exclusively by the nomination party. Any mineral lease selected from this Tract and awarded by the Louisiana State Mineral and Energy Board shall be without warranty of any kind, either express, implied, or statutory, including, but not limited to, the implied warranties of merchantability and fitness for a particular purpose. Should the mineral lease awarded by the Louisiana State Mineral and Energy Board be subsequently modified, cancelled or abrogated due to the existence of conflicting leases, operating agreements, private claims or other future obligations or conditions which may affect all or any portion of the leased Tract, it shall not relieve the Lessee of the obligation to pay any bonus due thereon to the Louisiana State Mineral and Energy Board, nor shall the Louisiana State Mineral and Energy Board be obligated to refund any consideration paid by the Lessor prior to such modification, cancellation, or abrogation, including, but not limited to, bonuses, rentals and royalties.

NOTE: This tract is located in the Rockefeller Wildlife Refuge and Game Preserve under the jurisdiction of the Louisiana Department of Wildlife and Fisheries which has promulgated rules and regulations for the protection of game and wildlife on the aforesaid Tract and, therefore, shall be subject to said rules and regulations, a copy of which may be obtained from the Department of Wildlife and Fisheries. In addition to the specific rules and regulations applicable, the following shall apply regarding operations under this mineral lease:

1. Compliance with the Rockefeller mineral regulations shall be required.

2. No surface activities will be allowed in the vicinity of the Headquarters and associated facilities without written authorization from the Department.

3. Board road access will be required when feasible as determined by the Department.

4. In the event that board road access is not feasible, existing canals and waterways will be utilized to access and drill the proposed well location. In the event the well location obstructs navigation, a maximum of 350 feet of new canal dredging will be allowed in an effort to eliminate the navigation obstruction.

5. Compensatory mitigation will be required for unavoidable wetland losses.

6. No discharges will be allowed, a containerized close loop system will be required.

7. Seasonal restrictions may be imposed within specific management units dependent upon wildlife population levels.

8. All spoil materials generated during dredging operations shall be placed at sites determined by the Department, additionally, the Department shall have discretion to require the use of a hydraulic dredge or spray dredge.

9. Prior to submitting application for wetland permits to Federal and State permitting agencies the leaseholder shall coordinate project details with the Department of Wildlife and Fisheries. Contact person for the Department will be Mike Perot at (225) 765-3978.

NOTE: This tract is subject to The Louisiana Department of Wildlife and Fisheries (LDWF) reduced standard mineral lease minimums for 2024 on coastal wildlife management areas and refuges (WMAs). LDWF's mineral lease minimums for coastal WMAs are as follows:

- Minimum Royalty for years 1-3 is 18.5% (reduction will run for 3 years on 1st production)
- After 3 years production, Minimum Royalty increases to 20.5%
- Production must begin within 24 months, otherwise Minimum Royalty will revert to 22.5%
- Royalty reduction will end January 1, 2025

NOTE: The State of Louisiana does hereby reserve, and this lease shall be subject to, the imprescriptible right of surface use in the nature of a servitude in favor of the Department of Natural Resources, including its Offices and Commissions, for the sole purpose of implementing, constructing, servicing and maintaining approved coastal zone management and/or restoration projects. Utilization of any and all rights derived under this lease by the mineral lessee, its agents, successors or assigns, shall not

interfere with nor hinder the reasonable surface use by the Department of Natural Resources, its Offices or Commissions, as herein above reserved.

Applicant: CYPRESS ENERGY PARTNERS, LLC

Bidder	Cash Payment	Price/Acre	Rental	Oil	Gas	Other

Legend

- 24050017
- Wildlife
- Counties



0 2,500 Feet

CAMERON

P.O.B.

Rockefeller Wildlife Refuge

GRASSY BAYOU

DYSON BAYOU

CONSTANCE BAYOU

TRACT 45788 - Cameron and Vermilion Parishes, Louisiana

A portion of all State owned lands, including high and marsh lands and land now or formerly constituting the beds and bottoms of any water body, within the boundaries of the Rockefeller Wildlife Refuge and Game Preserve, not presently under mineral lease by the State of Louisiana on May 8, 2024, situated in Cameron and Vermilion Parishes, Louisiana, and described as follows: Beginning at a point lying within the Rockefeller Wildlife Refuge, having Coordinates of X = 1,587,024.21 and Y = 361,272.34; thence South 55 degrees 53 minutes 50 seconds East 5,368.59 Feet to a point having Coordinates of X = 1,591,469.57 and Y = 358,262.28; thence South 55 degrees 53 minutes 50 seconds East approximately 88 feet to a point on the boundary of said Rockefeller Wildlife Refuge; thence along the boundary of said Rockefeller Wildlife Refuge the following courses: Southerly approximately 451 feet and Easterly approximately 691 feet to a point of intersection with a line having a bearing of North 55 degrees 53 minutes 50 seconds West; thence South 55 degrees 53 minutes 50 seconds East approximately 2,336 feet to a point on the boundary of said Rockefeller Wildlife Refuge; thence along the boundary of said Rockefeller Wildlife Refuge the following courses: Southerly approximately 47 feet and Easterly approximately 76 feet to a point of intersection with a line having a bearing of North 55 degrees 53 minutes 50 seconds West; thence South 55 degrees 53 minutes 50 seconds East approximately 82 feet to a point having Coordinates of X = 1,594,299.27 and Y = 356,346.22; thence South 33 degrees 07 minutes 55 seconds West 9,590.12 feet to a point having Coordinates of X = 1,588,918.24 Y = 348,408.04 thence North 55 degrees 45 minutes 52 seconds West 8,785.15 feet to a point having Coordinates of X = 1,581,655.28 and Y = 353,350.51; thence North 34 degrees 07 minutes 37 seconds East 9,569.79 feet to the point of beginning, containing approximately **1,929 acres**, all as more particularly outlined on a plat on file in the Office of Mineral Resources, Department of Natural Resources. All bearings, distances and coordinates are based on Louisiana Coordinate System of 1927, (South Zone).

NOTE: The above description of the Tract nominated for lease has been provided and corrected, where required, exclusively by the nomination party. Any mineral lease selected from this Tract and awarded by the Louisiana State Mineral and Energy Board shall be without warranty of any kind, either express, implied, or statutory, including, but not limited to, the implied warranties of merchantability and fitness for a particular purpose. Should the mineral lease awarded by the Louisiana State Mineral and Energy Board be subsequently modified, cancelled or abrogated due to the existence of conflicting leases, operating agreements, private claims or other future obligations or conditions which may affect all or any portion of the leased Tract, it shall not relieve the Lessee of the obligation to pay any bonus due thereon to the Louisiana State Mineral and Energy Board, nor shall the Louisiana State Mineral and Energy Board be obligated to refund any consideration paid by the Lessor prior to such modification, cancellation, or abrogation, including, but not limited to, bonuses, rentals and royalties.

NOTE: This tract is located in the Rockefeller Wildlife Refuge and Game Preserve under the jurisdiction of the Louisiana Department of Wildlife and Fisheries which has promulgated rules and regulations for the protection of game and wildlife on the aforesaid Tract and, therefore, shall be subject to said rules and regulations, a copy of which may be obtained from the Department of Wildlife and Fisheries. In addition to the specific rules and regulations applicable, the following shall apply regarding operations under this mineral lease:

1. Compliance with the Rockefeller mineral regulations shall be required.
2. No surface activities will be allowed in the vicinity of the Headquarters and associated facilities without written authorization from the Department.
3. Board road access will be required when feasible as determined by the Department.
4. In the event that board road access is not feasible, existing canals and waterways will be utilized to access and drill the proposed well location. In the event the well location obstructs navigation, a maximum of 350 feet of new canal dredging will be allowed in an effort to eliminate the navigation obstruction.
5. Compensatory mitigation will be required for unavoidable wetland losses.
6. No discharges will be allowed, a containerized close loop system will be required.
7. Seasonal restrictions may be imposed within specific management units dependent upon wildlife population levels.
8. All spoil materials generated during dredging operations shall be placed at sites determined by the Department, additionally, the Department shall have discretion to require the use of a hydraulic dredge or spray dredge.
9. Prior to submitting application for wetland permits to Federal and State permitting agencies the leaseholder shall coordinate project details with the Department of Wildlife and Fisheries. Contact person for the Department will be Mike Perot at (225) 765-3978.

NOTE: This tract is subject to The Louisiana Department of Wildlife and Fisheries (LDWF) reduced standard mineral lease minimums for 2024 on coastal wildlife management areas and refuges (WMAs). LDWF's mineral lease minims for coastal WMAs are as follows:

- Minimum Royalty for years 1-3 is 18.5% (reduction will run for 3 years on 1st production)
- After 3 years production, Minimum Royalty increases to 20.5%
- Production must begin within 24 months, otherwise Minimum Royalty will revert to 22.5%

- Royalty reduction will end January 1, 2025

NOTE: The State of Louisiana does hereby reserve, and this lease shall be subject to, the imprescriptible right of surface use in the nature of a servitude in favor of the Department of Natural Resources, including its Offices and Commissions, for the sole purpose of implementing, constructing, servicing and maintaining approved coastal zone management and/or restoration projects. Utilization of any and all rights derived under this lease by the mineral lessee, its agents, successors or assigns, shall not interfere with nor hinder the reasonable surface use by the Department of Natural Resources, its Offices or Commissions, as herein above reserved.

Applicant: CYPRESS ENERGY PARTNERS, LLC

Bidder	Cash Payment	Price/Acre	Rental	Oil	Gas	Other

Legend

- 24050018
- Wildlife
- Counties

VERMILLION

T16S - R2W

CAMERON

P.O.B.

DYSON BAYOU

T16S - R3W

Rockefeller Wildlife Refuge

0 2,000 Feet



TRACT 45789 - Vermilion Parish, Louisiana

A portion of all State owned lands, including high and marsh lands and land now or formerly constituting the beds and bottoms of any water body, within the boundaries of the Rockefeller Wildlife Refuge and Game Preserve, not presently under mineral lease by the State of Louisiana on May 8, 2024, situated in Vermilion Parish, Louisiana, and described as follows: Beginning at a point lying within the Rockefeller Wildlife Refuge, having Coordinates of X = 1,604,094.06 and Y = 361,286.23; thence South 55 degrees 58 minutes 44 seconds East approximately 4,003 feet to a point on the boundary of said Rockefeller Wildlife Refuge; thence along the boundary of said Rockefeller Wildlife Refuge the following: Southerly approximately 4,152 feet and Easterly approximately 2,957 feet to a point of intersection with a line having a bearing of North 33 degrees 58 minutes 37 seconds East; thence South 33 degrees 58 minutes 37 seconds West approximately 7,749 feet to a point having Coordinates of X = 1,605,956.06 and Y = 348,427.12; thence North 55 degrees 45 minutes 23 seconds West 8,768.58 feet to a point having Coordinates of X = 1,598,707.49 and Y = 353,361.31; thence North 34 degrees 12 minutes 14 seconds East approximately 1,971 feet to a point on the boundary of said Rockefeller Wildlife Refuge; thence along the boundary of said Rockefeller Wildlife Refuge the following: Easterly approximately 2,245 feet, Northerly approximately 2,649 feet, and Westerly approximately 503 feet to a point of intersection with a line having a bearing of South 34 degrees 12 minutes 14 seconds West; thence North 34 degrees 12 minutes 14 seconds East approximately 4,430 feet to the point of beginning, containing approximately **1,602 acres**, all as more particularly outlined on a plat on file in the Office of Mineral Resources, Department of Natural Resources. All bearings, distances and coordinates are based on Louisiana Coordinate System of 1927, (South Zone).

NOTE: The above description of the Tract nominated for lease has been provided and corrected, where required, exclusively by the nomination party. Any mineral lease selected from this Tract and awarded by the Louisiana State Mineral and Energy Board shall be without warranty of any kind, either express, implied, or statutory, including, but not limited to, the implied warranties of merchantability and fitness for a particular purpose. Should the mineral lease awarded by the Louisiana State Mineral and Energy Board be subsequently modified, cancelled or abrogated due to the existence of conflicting leases, operating agreements, private claims or other future obligations or conditions which may affect all or any portion of the leased Tract, it shall not relieve the Lessee of the obligation to pay any bonus due thereon to the Louisiana State Mineral and Energy Board, nor shall the Louisiana State Mineral and Energy Board be obligated to refund any consideration paid by the Lessor prior to such modification, cancellation, or abrogation, including, but not limited to, bonuses, rentals and royalties.

NOTE: This tract is located in the Rockefeller Wildlife Refuge and Game Preserve under the jurisdiction of the Louisiana Department of Wildlife and Fisheries which has promulgated rules and regulations for the protection of game and wildlife on the aforesaid Tract and, therefore, shall be subject to

said rules and regulations, a copy of which may be obtained from the Department of Wildlife and Fisheries. In addition to the specific rules and regulations applicable, the following shall apply regarding operations under this mineral lease:

1. Compliance with the Rockefeller mineral regulations shall be required.
2. No surface activities will be allowed in the vicinity of the Headquarters and associated facilities without written authorization from the Department.
3. Board road access will be required when feasible as determined by the Department.
4. In the event that board road access is not feasible, existing canals and waterways will be utilized to access and drill the proposed well location. In the event the well location obstructs navigation, a maximum of 350 feet of new canal dredging will be allowed in an effort to eliminate the navigation obstruction.
5. Compensatory mitigation will be required for unavoidable wetland losses.
6. No discharges will be allowed, a containerized close loop system will be required.
7. Seasonal restrictions may be imposed within specific management units dependent upon wildlife population levels.
8. All spoil materials generated during dredging operations shall be placed at sites determined by the Department, additionally, the Department shall have discretion to require the use of a hydraulic dredge or spray dredge.
9. Prior to submitting application for wetland permits to Federal and State permitting agencies the leaseholder shall coordinate project details with the Department of Wildlife and Fisheries. Contact person for the Department will be Mike Perot at (225) 765-3978.

NOTE: This tract is subject to The Louisiana Department of Wildlife and Fisheries (LDWF) reduced standard mineral lease minimums for 2024 on coastal wildlife management areas and refuges (WMAs). LDWF's mineral lease minimums for coastal WMAs are as follows:

- Minimum Royalty for years 1-3 is 18.5% (reduction will run for 3 years on 1st production)
- After 3 years production, Minimum Royalty increases to 20.5%
- Production must begin within 24 months, otherwise Minimum Royalty will revert to 22.5%
- Royalty reduction will end January 1, 2025

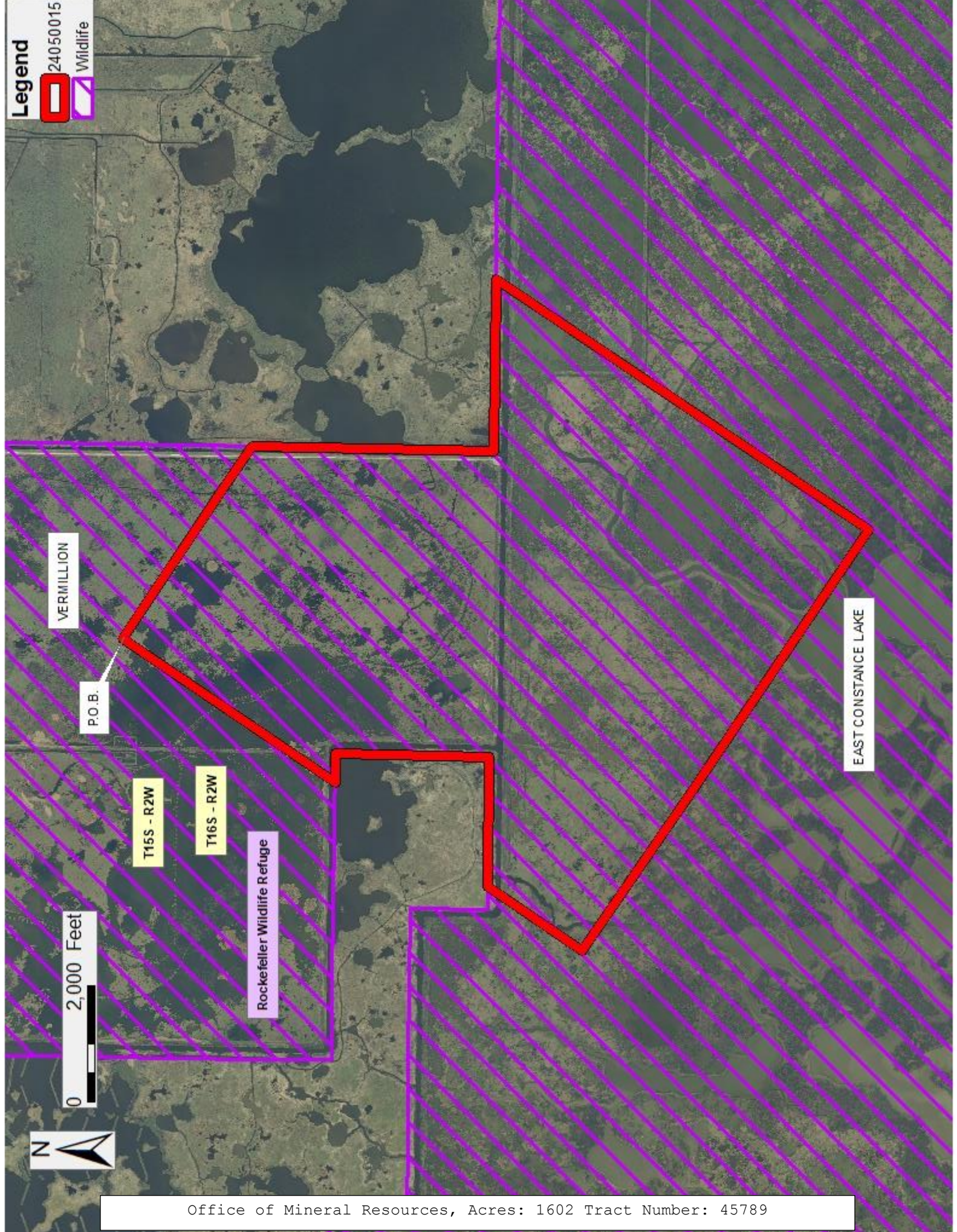
NOTE: The State of Louisiana does hereby reserve, and this lease shall be subject to, the imprescriptible right of surface use in the nature of a

servitude in favor of the Department of Natural Resources, including its Offices and Commissions, for the sole purpose of implementing, constructing, servicing and maintaining approved coastal zone management and/or restoration projects. Utilization of any and all rights derived under this lease by the mineral lessee, its agents, successors or assigns, shall not interfere with nor hinder the reasonable surface use by the Department of Natural Resources, its Offices or Commissions, as herein above reserved.

Applicant: CYPRESS ENERGY PARTNERS, LLC

Bidder	Cash Payment	Price/Acre	Rental	Oil	Gas	Other

Legend
24050015
Wildlife



Office of Mineral Resources, Acres: 1602 Tract Number: 45789

TRACT 45790 - Cameron Parish, Louisiana

A portion of all State owned lands, including high and marsh lands and land now or formerly constituting the beds and bottoms of any water body, within the boundaries of the Rockefeller Wildlife Refuge and Game Preserve, not presently under mineral lease by the State of Louisiana on May 8, 2024, situated in Cameron Parish, Louisiana, and described as follows: Beginning at a point lying within the Rockefeller Wildlife Refuge, having Coordinates of X = 1,574,365.35 and Y = 358,291.81; thence South 55 degrees 52 minutes 10 seconds East 8,806.81 feet to a point having Coordinates of X = 1,581,655.28 and Y = 353,350.50; thence South 34 degrees 27 minutes 54 seconds West 9,505.45 feet to a point having Coordinates of X = 1,576,276.11 and Y = 345,513.55; thence North 56 degrees 09 minutes 07 seconds West 8,812.93 feet to a point having Coordinates of X = 1,568,956.82 and Y = 350,422.29; thence North 34 degrees 29 minutes 59 seconds East 9,548.90 feet to the point of beginning, containing approximately **1,926.77 acres**, all as more particularly outlined on a plat on file in the Office of Mineral Resources, Department of Natural Resources. All bearings, distances and coordinates are based on Louisiana Coordinate System of 1927, (South Zone).

NOTE: The above description of the Tract nominated for lease has been provided and corrected, where required, exclusively by the nomination party. Any mineral lease selected from this Tract and awarded by the Louisiana State Mineral and Energy Board shall be without warranty of any kind, either express, implied, or statutory, including, but not limited to, the implied warranties of merchantability and fitness for a particular purpose. Should the mineral lease awarded by the Louisiana State Mineral and Energy Board be subsequently modified, cancelled or abrogated due to the existence of conflicting leases, operating agreements, private claims or other future obligations or conditions which may affect all or any portion of the leased Tract, it shall not relieve the Lessee of the obligation to pay any bonus due thereon to the Louisiana State Mineral and Energy Board, nor shall the Louisiana State Mineral and Energy Board be obligated to refund any consideration paid by the Lessor prior to such modification, cancellation, or abrogation, including, but not limited to, bonuses, rentals and royalties.

NOTE: This tract is located in the Rockefeller Wildlife Refuge and Game Preserve under the jurisdiction of the Louisiana Department of Wildlife and Fisheries which has promulgated rules and regulations for the protection of game and wildlife on the aforesaid Tract and, therefore, shall be subject to said rules and regulations, a copy of which may be obtained from the Department of Wildlife and Fisheries. In addition to the specific rules and regulations applicable, the following shall apply regarding operations under this mineral lease:

1. Compliance with the Rockefeller mineral regulations shall be required.
2. No surface activities will be allowed in the vicinity of the Headquarters and associated facilities without written authorization from the Department.

3. Board road access will be required when feasible as determined by the Department.

4. In the event that board road access is not feasible, existing canals and waterways will be utilized to access and drill the proposed well location. In the event the well location obstructs navigation, a maximum of 350 feet of new canal dredging will be allowed in an effort to eliminate the navigation obstruction.

5. Compensatory mitigation will be required for unavoidable wetland losses.

6. No discharges will be allowed, a containerized close loop system will be required.

7. Seasonal restrictions may be imposed within specific management units dependent upon wildlife population levels.

8. All spoil materials generated during dredging operations shall be placed at sites determined by the Department, additionally, the Department shall have discretion to require the use of a hydraulic dredge or spray dredge.

9. Prior to submitting application for wetland permits to Federal and State permitting agencies the leaseholder shall coordinate project details with the Department of Wildlife and Fisheries. Contact person for the Department will be Mike Perot at (225) 765-3978.

NOTE: This tract is subject to The Louisiana Department of Wildlife and Fisheries (LDWF) reduced standard mineral lease minimums for 2024 on coastal wildlife management areas and refuges (WMAs). LDWF's mineral lease minimums for coastal WMAs are as follows:

- Minimum Royalty for years 1-3 is 18.5% (reduction will run for 3 years on 1st production)
- After 3 years production, Minimum Royalty increases to 20.5%
- Production must begin within 24 months, otherwise Minimum Royalty will revert to 22.5%
- Royalty reduction will end January 1, 2025

NOTE: The State of Louisiana does hereby reserve, and this lease shall be subject to, the imprescriptible right of surface use in the nature of a servitude in favor of the Department of Natural Resources, including its Offices and Commissions, for the sole purpose of implementing, constructing, servicing and maintaining approved coastal zone management and/or restoration projects. Utilization of any and all rights derived under this lease by the mineral lessee, its agents, successors or assigns, shall not interfere with nor hinder the reasonable surface use by the Department of Natural Resources, its Offices or Commissions, as herein above reserved.

Applicant: CYPRESS ENERGY PARTNERS, LLC

Bidder	Cash Payment	Price/Acre	Rental	Oil	Gas	Other

Legend



CAMERON

P.O.B.

Rockefeller Wildlife Refuge

CONSTANCE BAYOU

LITTLE CONSTANCE LAKE



0 2,500 Feet

Office of Mineral Resources, Acres: 1926.77 Tract Number: 45790

TRACT 45791 - Cameron and Vermilion Parishes, Louisiana

A portion of all State owned lands, including high and marsh lands and land now or formerly constituting the beds and bottoms of any water body, within the boundaries of the Rockefeller Wildlife Refuge and Game Preserve, not presently under mineral lease by the State of Louisiana on May 8, 2024, situated in Cameron and Vermilion Parishes, Louisiana, and described as follows: Beginning at a point lying within the Rockefeller Wildlife Refuge, having Coordinates of X = 1,594,299.27 and Y = 356,346.22; thence South 55 degrees 53 minutes 50 seconds East 5,323.74 feet to a point having Coordinates of X = 1,598,707.49 and Y = 353,361.31; thence South 55 degrees 41 minutes 31 seconds East 3,419.45 feet to a point having Coordinates of X = 1,601,532.02 and Y = 351,433.97; thence South 34 degrees 13 minutes 23 seconds West 9,598.09 feet to a point having Coordinates of X = 1,596,133.89 and Y = 343,497.75; thence North 55 degrees 45 minutes 52 seconds West 8,727.92 feet to a point having Coordinates of X = 1,588,918.24 and Y = 348,408.03; thence North 34 degrees 07 minutes 55 seconds East 9,590.12 feet to the point of beginning, containing approximately **1,924.76 acres**, all as more particularly outlined on a plat on file in the Office of Mineral Resources, Department of Natural Resources. All bearings, distances and coordinates are based on Louisiana Coordinate System of 1927, (South Zone).

NOTE: The above description of the Tract nominated for lease has been provided and corrected, where required, exclusively by the nomination party. Any mineral lease selected from this Tract and awarded by the Louisiana State Mineral and Energy Board shall be without warranty of any kind, either express, implied, or statutory, including, but not limited to, the implied warranties of merchantability and fitness for a particular purpose. Should the mineral lease awarded by the Louisiana State Mineral and Energy Board be subsequently modified, cancelled or abrogated due to the existence of conflicting leases, operating agreements, private claims or other future obligations or conditions which may affect all or any portion of the leased Tract, it shall not relieve the Lessee of the obligation to pay any bonus due thereon to the Louisiana State Mineral and Energy Board, nor shall the Louisiana State Mineral and Energy Board be obligated to refund any consideration paid by the Lessor prior to such modification, cancellation, or abrogation, including, but not limited to, bonuses, rentals and royalties.

NOTE: This tract is located in the Rockefeller Wildlife Refuge and Game Preserve under the jurisdiction of the Louisiana Department of Wildlife and Fisheries which has promulgated rules and regulations for the protection of game and wildlife on the aforesaid Tract and, therefore, shall be subject to said rules and regulations, a copy of which may be obtained from the Department of Wildlife and Fisheries. In addition to the specific rules and regulations applicable, the following shall apply regarding operations under this mineral lease:

1. Compliance with the Rockefeller mineral regulations shall be required.

2. No surface activities will be allowed in the vicinity of the Headquarters and associated facilities without written authorization from the Department.

3. Board road access will be required when feasible as determined by the Department.

4. In the event that board road access is not feasible, existing canals and waterways will be utilized to access and drill the proposed well location. In the event the well location obstructs navigation, a maximum of 350 feet of new canal dredging will be allowed in an effort to eliminate the navigation obstruction.

5. Compensatory mitigation will be required for unavoidable wetland losses.

6. No discharges will be allowed, a containerized close loop system will be required.

7. Seasonal restrictions may be imposed within specific management units dependent upon wildlife population levels.

8. All spoil materials generated during dredging operations shall be placed at sites determined by the Department, additionally, the Department shall have discretion to require the use of a hydraulic dredge or spray dredge.

9. Prior to submitting application for wetland permits to Federal and State permitting agencies the leaseholder shall coordinate project details with the Department of Wildlife and Fisheries. Contact person for the Department will be Mike Perot at (225) 765-3978.

NOTE: This tract is subject to The Louisiana Department of Wildlife and Fisheries (LDWF) reduced standard mineral lease minimums for 2024 on coastal wildlife management areas and refuges (WMAs). LDWF's mineral lease minimums for coastal WMAs are as follows:

- Minimum Royalty for years 1-3 is 18.5% (reduction will run for 3 years on 1st production)
- After 3 years production, Minimum Royalty increases to 20.5%
- Production must begin within 24 months, otherwise Minimum Royalty will revert to 22.5%
- Royalty reduction will end January 1, 2025

NOTE: The State of Louisiana does hereby reserve, and this lease shall be subject to, the imprescriptible right of surface use in the nature of a servitude in favor of the Department of Natural Resources, including its Offices and Commissions, for the sole purpose of implementing, constructing, servicing and maintaining approved coastal zone management and/or restoration projects. Utilization of any and all rights derived under this lease by the mineral lessee, its agents, successors or assigns, shall not

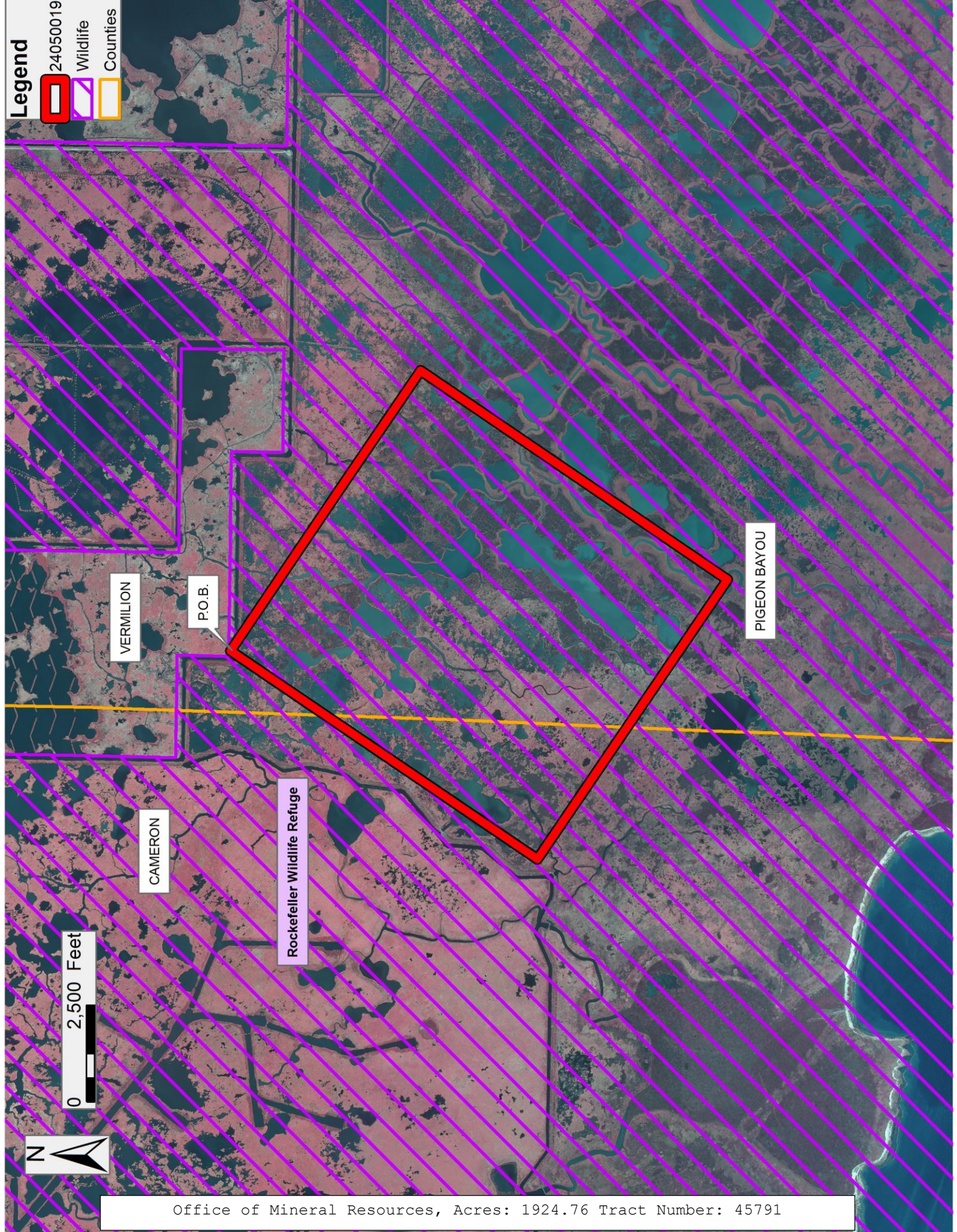
interfere with nor hinder the reasonable surface use by the Department of Natural Resources, its Offices or Commissions, as herein above reserved.

Applicant: CYPRESS ENERGY PARTNERS, LLC

Bidder	Cash Payment	Price/Acre	Rental	Oil	Gas	Other

Legend

- 24050019
- Wildlife
- Counties



Office of Mineral Resources, Acres: 1924.76 Tract Number: 45791

TRACT 45792 - Vermilion Parish, Louisiana

A portion of all State owned lands, including high and marsh lands and land now or formerly constituting the beds and bottoms of any water body, within the boundaries of the Rockefeller Wildlife Refuge and Game Preserve, not presently under mineral lease by the State of Louisiana on May 8, 2024, situated in Vermilion Parish, Louisiana, and described as follows: Beginning at a point lying within the Rockefeller Wildlife Refuge, having Coordinates of X = 1,618,579.39 and Y = 351,452.64; thence South 34 degrees 13 minutes 23 seconds West 9,598.11 Feet to a point having Coordinates of X = 1,613,181.27 and Y = 343,516.42; thence North 55 degrees 47 minutes 51 seconds West 8,736.05 feet to a point having Coordinates of X = 1,605,956.06 and Y = 348,427.12; thence North 33 degrees 58 minutes 37 seconds East approximately 7,749 feet to a point on the boundary of the Rockefeller Wildlife Refuge; thence Southeasterly approximately 3,361 feet along the boundary of said Rockefeller Wildlife Refuge to a point of intersection with a line having a bearing of North 55 degrees 47 minutes 04 seconds West; thence South 55 degrees 47 minutes 04 East approximately 5,964 feet to the point of beginning, containing approximately **1,869 acres**, all as more particularly outlined on a plat on file in the Office of Mineral Resources, Department of Natural Resources. All bearings, distances and coordinates are based on Louisiana Coordinate System of 1927, (South Zone).

NOTE: The above description of the Tract nominated for lease has been provided and corrected, where required, exclusively by the nomination party. Any mineral lease selected from this Tract and awarded by the Louisiana State Mineral and Energy Board shall be without warranty of any kind, either express, implied, or statutory, including, but not limited to, the implied warranties of merchantability and fitness for a particular purpose. Should the mineral lease awarded by the Louisiana State Mineral and Energy Board be subsequently modified, cancelled or abrogated due to the existence of conflicting leases, operating agreements, private claims or other future obligations or conditions which may affect all or any portion of the leased Tract, it shall not relieve the Lessee of the obligation to pay any bonus due thereon to the Louisiana State Mineral and Energy Board, nor shall the Louisiana State Mineral and Energy Board be obligated to refund any consideration paid by the Lessor prior to such modification, cancellation, or abrogation, including, but not limited to, bonuses, rentals and royalties.

NOTE: This tract is located in the Rockefeller Wildlife Refuge and Game Preserve under the jurisdiction of the Louisiana Department of Wildlife and Fisheries which has promulgated rules and regulations for the protection of game and wildlife on the aforesaid Tract and, therefore, shall be subject to said rules and regulations, a copy of which may be obtained from the Department of Wildlife and Fisheries. In addition to the specific rules and regulations applicable, the following shall apply regarding operations under this mineral lease:

1. Compliance with the Rockefeller mineral regulations shall be required.

2. No surface activities will be allowed in the vicinity of the Headquarters and associated facilities without written authorization from the Department.

3. Board road access will be required when feasible as determined by the Department.

4. In the event that board road access is not feasible, existing canals and waterways will be utilized to access and drill the proposed well location. In the event the well location obstructs navigation, a maximum of 350 feet of new canal dredging will be allowed in an effort to eliminate the navigation obstruction.

5. Compensatory mitigation will be required for unavoidable wetland losses.

6. No discharges will be allowed, a containerized close loop system will be required.

7. Seasonal restrictions may be imposed within specific management units dependent upon wildlife population levels.

8. All spoil materials generated during dredging operations shall be placed at sites determined by the Department, additionally, the Department shall have discretion to require the use of a hydraulic dredge or spray dredge.

9. Prior to submitting application for wetland permits to Federal and State permitting agencies the leaseholder shall coordinate project details with the Department of Wildlife and Fisheries. Contact person for the Department will be Mike Perot at (225) 765-3978.

NOTE: This tract is subject to The Louisiana Department of Wildlife and Fisheries (LDWF) reduced standard mineral lease minimums for 2024 on coastal wildlife management areas and refuges (WMAs). LDWF's mineral lease minimums for coastal WMAs are as follows:

- Minimum Royalty for years 1-3 is 18.5% (reduction will run for 3 years on 1st production)
- After 3 years production, Minimum Royalty increases to 20.5%
- Production must begin within 24 months, otherwise Minimum Royalty will revert to 22.5%
- Royalty reduction will end January 1, 2025

NOTE: The State of Louisiana does hereby reserve, and this lease shall be subject to, the imprescriptible right of surface use in the nature of a servitude in favor of the Department of Natural Resources, including its Offices and Commissions, for the sole purpose of implementing, constructing, servicing and maintaining approved coastal zone management and/or restoration projects. Utilization of any and all rights derived under this lease by the mineral lessee, its agents, successors or assigns, shall not

interfere with nor hinder the reasonable surface use by the Department of Natural Resources, its Offices or Commissions, as herein above reserved.

Applicant: CYPRESS ENERGY PARTNERS, LLC

Bidder	Cash Payment	Price/Acre	Rental	Oil	Gas	Other

Legend



T15S - R2W

T16S - R2W

VERMILLION

ROLLOVER LAKE

P.O.B.

Rockefeller Wildlife Refuge

0 2,000 Feet



TRACT 45793 - Cameron Parish, Louisiana

A portion of all State owned lands, including high and marsh lands and land now or formerly constituting the beds and bottoms of any water body, within the boundaries of the Rockefeller Wildlife Refuge and Game Preserve, not presently under mineral lease by the State of Louisiana on May 8, 2024, situated in Cameron Parish, Louisiana, and described as follows: Beginning at a point lying within the Rockefeller Wildlife Refuge, having Coordinates of X = 1,581,655.28 and Y = 353,350.50; thence South 55 degrees 45 minutes 52 seconds East 8,785.15 feet to a point having Coordinates of X = 1,589,918.24 and Y = 348,408.03; thence South 34 degrees 29 minutes 53 seconds West 9,505.48 feet to a point having Coordinates of X = 1,583,534.55 and Y = 340,574.15; thence North 55 degrees 45 minutes 52 seconds West 8,779.68 feet to a point having Coordinates of X = 1,576,276.11 and Y = 345,513.55; thence North 34 degrees 27 minutes 54 seconds East 9,505.45 feet to the point of beginning, containing approximately **1,916.44 acres**, all as more particularly outlined on a plat on file in the Office of Mineral Resources, Department of Natural Resources. All bearings, distances and coordinates are based on Louisiana Coordinate System of 1927, (South Zone).

NOTE: The above description of the Tract nominated for lease has been provided and corrected, where required, exclusively by the nomination party. Any mineral lease selected from this Tract and awarded by the Louisiana State Mineral and Energy Board shall be without warranty of any kind, either express, implied, or statutory, including, but not limited to, the implied warranties of merchantability and fitness for a particular purpose. Should the mineral lease awarded by the Louisiana State Mineral and Energy Board be subsequently modified, cancelled or abrogated due to the existence of conflicting leases, operating agreements, private claims or other future obligations or conditions which may affect all or any portion of the leased Tract, it shall not relieve the Lessee of the obligation to pay any bonus due thereon to the Louisiana State Mineral and Energy Board, nor shall the Louisiana State Mineral and Energy Board be obligated to refund any consideration paid by the Lessor prior to such modification, cancellation, or abrogation, including, but not limited to, bonuses, rentals and royalties.

NOTE: This tract is located in the Rockefeller Wildlife Refuge and Game Preserve under the jurisdiction of the Louisiana Department of Wildlife and Fisheries which has promulgated rules and regulations for the protection of game and wildlife on the aforesaid Tract and, therefore, shall be subject to said rules and regulations, a copy of which may be obtained from the Department of Wildlife and Fisheries. In addition to the specific rules and regulations applicable, the following shall apply regarding operations under this mineral lease:

1. Compliance with the Rockefeller mineral regulations shall be required.
2. No surface activities will be allowed in the vicinity of the Headquarters and associated facilities without written authorization from the Department.

3. Board road access will be required when feasible as determined by the Department.

4. In the event that board road access is not feasible, existing canals and waterways will be utilized to access and drill the proposed well location. In the event the well location obstructs navigation, a maximum of 350 feet of new canal dredging will be allowed in an effort to eliminate the navigation obstruction.

5. Compensatory mitigation will be required for unavoidable wetland losses.

6. No discharges will be allowed, a containerized close loop system will be required.

7. Seasonal restrictions may be imposed within specific management units dependent upon wildlife population levels.

8. All spoil materials generated during dredging operations shall be placed at sites determined by the Department, additionally, the Department shall have discretion to require the use of a hydraulic dredge or spray dredge.

9. Prior to submitting application for wetland permits to Federal and State permitting agencies the leaseholder shall coordinate project details with the Department of Wildlife and Fisheries. Contact person for the Department will be Mike Perot at (225) 765-3978.

NOTE: This tract is subject to The Louisiana Department of Wildlife and Fisheries (LDWF) reduced standard mineral lease minimums for 2024 on coastal wildlife management areas and refuges (WMAs). LDWF's mineral lease minimums for coastal WMAs are as follows:

- Minimum Royalty for years 1-3 is 18.5% (reduction will run for 3 years on 1st production)
- After 3 years production, Minimum Royalty increases to 20.5%
- Production must begin within 24 months, otherwise Minimum Royalty will revert to 22.5%
- Royalty reduction will end January 1, 2025

NOTE: The State of Louisiana does hereby reserve, and this lease shall be subject to, the imprescriptible right of surface use in the nature of a servitude in favor of the Department of Natural Resources, including its Offices and Commissions, for the sole purpose of implementing, constructing, servicing and maintaining approved coastal zone management and/or restoration projects. Utilization of any and all rights derived under this lease by the mineral lessee, its agents, successors or assigns, shall not interfere with nor hinder the reasonable surface use by the Department of Natural Resources, its Offices or Commissions, as herein above reserved.

Applicant: CYPRESS ENERGY PARTNERS, LLC

Bidder	Cash Payment	Price/Acre	Rental	Oil	Gas	Other

Legend

- 24050023
- Wildlife
- Counties

CAMERON

Rockefeller Wildlife Refuge

DYSON BAYOU

P.O.B.

CONSTANCE BAYOU

BIG CONSTANCE LAKE



Office of Mineral Resources, Acres: 1916.44 Tract Number: 45793

TRACT 45794 - Vermilion Parish, Louisiana

A portion of all State owned lands, including high and marsh lands and land now or formerly constituting the beds and bottoms of any water body, within the boundaries of the Rockefeller Wildlife Refuge and Game Preserve, not presently under mineral lease by the State of Louisiana on May 8, 2024, situated in Vermilion Parish, Louisiana, and described as follows: Beginning at a point lying within the Rockefeller Wildlife Refuge, having Coordinates of X = 1,601,532.02 and Y = 351,433.97; thence South 55 degrees 47 minutes 51 seconds East 8,772.43 feet to a point having Coordinates of X = 1,608,787.31 and Y = 346,502.83; thence South 34 degrees 13 minutes 03 seconds West 9,601.26 feet to a point having Coordinates of X = 1,603,388.19 and Y = 338,563.46; thence North 55 degrees 46 minutes 37 seconds West 8,773.37 feet to a point having Coordinates of X = 1,596,133.89 and Y = 343,497.75; thence North 34 degrees 13 minutes 23 seconds East 9,598.09 feet to the point of beginning, containing approximately **1,933.36 acres**, all as more particularly outlined on a plat on file in the Office of Mineral Resources, Department of Natural Resources. All bearings, distances and coordinates are based on Louisiana Coordinate System of 1927, (South Zone).

NOTE: The above description of the Tract nominated for lease has been provided and corrected, where required, exclusively by the nomination party. Any mineral lease selected from this Tract and awarded by the Louisiana State Mineral and Energy Board shall be without warranty of any kind, either express, implied, or statutory, including, but not limited to, the implied warranties of merchantability and fitness for a particular purpose. Should the mineral lease awarded by the Louisiana State Mineral and Energy Board be subsequently modified, cancelled or abrogated due to the existence of conflicting leases, operating agreements, private claims or other future obligations or conditions which may affect all or any portion of the leased Tract, it shall not relieve the Lessee of the obligation to pay any bonus due thereon to the Louisiana State Mineral and Energy Board, nor shall the Louisiana State Mineral and Energy Board be obligated to refund any consideration paid by the Lessor prior to such modification, cancellation, or abrogation, including, but not limited to, bonuses, rentals and royalties.

NOTE: This tract is located in the Rockefeller Wildlife Refuge and Game Preserve under the jurisdiction of the Louisiana Department of Wildlife and Fisheries which has promulgated rules and regulations for the protection of game and wildlife on the aforesaid Tract and, therefore, shall be subject to said rules and regulations, a copy of which may be obtained from the Department of Wildlife and Fisheries. In addition to the specific rules and regulations applicable, the following shall apply regarding operations under this mineral lease:

1. Compliance with the Rockefeller mineral regulations shall be required.
2. No surface activities will be allowed in the vicinity of the Headquarters and associated facilities without written authorization from the Department.

3. Board road access will be required when feasible as determined by the Department.

4. In the event that board road access is not feasible, existing canals and waterways will be utilized to access and drill the proposed well location. In the event the well location obstructs navigation, a maximum of 350 feet of new canal dredging will be allowed in an effort to eliminate the navigation obstruction.

5. Compensatory mitigation will be required for unavoidable wetland losses.

6. No discharges will be allowed, a containerized close loop system will be required.

7. Seasonal restrictions may be imposed within specific management units dependent upon wildlife population levels.

8. All spoil materials generated during dredging operations shall be placed at sites determined by the Department, additionally, the Department shall have discretion to require the use of a hydraulic dredge or spray dredge.

9. Prior to submitting application for wetland permits to Federal and State permitting agencies the leaseholder shall coordinate project details with the Department of Wildlife and Fisheries. Contact person for the Department will be Mike Perot at (225) 765-3978.

NOTE: This tract is subject to The Louisiana Department of Wildlife and Fisheries (LDWF) reduced standard mineral lease minimums for 2024 on coastal wildlife management areas and refuges (WMAs). LDWF's mineral lease minimums for coastal WMAs are as follows:

- Minimum Royalty for years 1-3 is 18.5% (reduction will run for 3 years on 1st production)
- After 3 years production, Minimum Royalty increases to 20.5%
- Production must begin within 24 months, otherwise Minimum Royalty will revert to 22.5%
- Royalty reduction will end January 1, 2025

NOTE: The State of Louisiana does hereby reserve, and this lease shall be subject to, the imprescriptible right of surface use in the nature of a servitude in favor of the Department of Natural Resources, including its Offices and Commissions, for the sole purpose of implementing, constructing, servicing and maintaining approved coastal zone management and/or restoration projects. Utilization of any and all rights derived under this lease by the mineral lessee, its agents, successors or assigns, shall not interfere with nor hinder the reasonable surface use by the Department of Natural Resources, its Offices or Commissions, as herein above reserved.

Applicant: CYPRESS ENERGY PARTNERS, LLC

Bidder	Cash Payment	Price/Acre	Rental	Oil	Gas	Other

Legend

- 24050020
- Wildlife
- Counties



0 2,000 Feet

P.O.B.

Rockefeller Wildlife Refuge

T16S - R2W

PIGEON BAYOU

EAST LITTLE CONSTANCE BAYOU

Office of Mineral Resources, Acres: 1933.36 Tract Number: 45794

TRACT 45795 - Cameron and Vermilion Parishes, Louisiana

A portion of all State owned lands, including high and marsh lands and land now or formerly constituting the beds and bottoms of any water body, within the boundaries of the Rockefeller Wildlife Refuge and Game Preserve, not presently under mineral lease by the State of Louisiana on May 8, 2024, situated in Cameron and Vermilion Parishes, Louisiana, and described as follows: Beginning at a point lying within the Rockefeller Wildlife Refuge, having Coordinates of X = 1,588,918.24 and Y = 348,408.03; thence South 55 degrees 45 minutes 52 seconds East 8,727.92 feet to a point having Coordinates of X = 1,596,133.89 and Y = 343,497.75; thence South 34 degrees 27 minutes 54 seconds West 7,759.76 feet to a point having Coordinates of X = 1,591,742.62 and Y = 337,100.06; thence North 67 degrees 03 minutes 34 seconds West 8,913.01 feet to a point having Coordinates of X = 1,583,534.55 and Y = 340,574.15; thence North 34 degrees 29 minutes 53 seconds East 9,505.45 feet to the point of beginning, containing approximately **1,730.15 acres**, all as more particularly outlined on a plat on file in the Office of Mineral Resources, Department of Natural Resources. All bearings, distances and coordinates are based on Louisiana Coordinate System of 1927, (South Zone).

NOTE: The above description of the Tract nominated for lease has been provided and corrected, where required, exclusively by the nomination party. Any mineral lease selected from this Tract and awarded by the Louisiana State Mineral and Energy Board shall be without warranty of any kind, either express, implied, or statutory, including, but not limited to, the implied warranties of merchantability and fitness for a particular purpose. Should the mineral lease awarded by the Louisiana State Mineral and Energy Board be subsequently modified, cancelled or abrogated due to the existence of conflicting leases, operating agreements, private claims or other future obligations or conditions which may affect all or any portion of the leased Tract, it shall not relieve the Lessee of the obligation to pay any bonus due thereon to the Louisiana State Mineral and Energy Board, nor shall the Louisiana State Mineral and Energy Board be obligated to refund any consideration paid by the Lessor prior to such modification, cancellation, or abrogation, including, but not limited to, bonuses, rentals and royalties.

NOTE: This tract is located in the Rockefeller Wildlife Refuge and Game Preserve under the jurisdiction of the Louisiana Department of Wildlife and Fisheries which has promulgated rules and regulations for the protection of game and wildlife on the aforesaid Tract and, therefore, shall be subject to said rules and regulations, a copy of which may be obtained from the Department of Wildlife and Fisheries. In addition to the specific rules and regulations applicable, the following shall apply regarding operations under this mineral lease:

1. Compliance with the Rockefeller mineral regulations shall be required.
2. No surface activities will be allowed in the vicinity of the Headquarters and associated facilities without written authorization from the Department.

3. Board road access will be required when feasible as determined by the Department.

4. In the event that board road access is not feasible, existing canals and waterways will be utilized to access and drill the proposed well location. In the event the well location obstructs navigation, a maximum of 350 feet of new canal dredging will be allowed in an effort to eliminate the navigation obstruction.

5. Compensatory mitigation will be required for unavoidable wetland losses.

6. No discharges will be allowed, a containerized close loop system will be required.

7. Seasonal restrictions may be imposed within specific management units dependent upon wildlife population levels.

8. All spoil materials generated during dredging operations shall be placed at sites determined by the Department, additionally, the Department shall have discretion to require the use of a hydraulic dredge or spray dredge.

9. Prior to submitting application for wetland permits to Federal and State permitting agencies the leaseholder shall coordinate project details with the Department of Wildlife and Fisheries. Contact person for the Department will be Mike Perot at (225) 765-3978.

NOTE: This tract is subject to The Louisiana Department of Wildlife and Fisheries (LDWF) reduced standard mineral lease minimums for 2024 on coastal wildlife management areas and refuges (WMAs). LDWF's mineral lease minimums for coastal WMAs are as follows:

- Minimum Royalty for years 1-3 is 18.5% (reduction will run for 3 years on 1st production)
- After 3 years production, Minimum Royalty increases to 20.5%
- Production must begin within 24 months, otherwise Minimum Royalty will revert to 22.5%
- Royalty reduction will end January 1, 2025

NOTE: The State of Louisiana does hereby reserve, and this lease shall be subject to, the imprescriptible right of surface use in the nature of a servitude in favor of the Department of Natural Resources, including its Offices and Commissions, for the sole purpose of implementing, constructing, servicing and maintaining approved coastal zone management and/or restoration projects. Utilization of any and all rights derived under this lease by the mineral lessee, its agents, successors or assigns, shall not interfere with nor hinder the reasonable surface use by the Department of Natural Resources, its Offices or Commissions, as herein above reserved.

Applicant: CYPRESS ENERGY PARTNERS, LLC

Bidder	Cash Payment	Price/Acre	Rental	Oil	Gas	Other

Legend

- 24050024
- Wildlife
- Counties

VERMILION

Rockefeller Wildlife Refuge

PIGEON BAYOU

CAMERON

P.O.B.

GULF OF MEXICO

0 2,500 Feet



Office of Mineral Resources, Acres: 1730.15 Tract Number: 45795