

TRACT 45798 - De Soto and Natchitoches Parishes, Louisiana

All of the lands now or formerly constituting the beds and bottoms of all water bodies of every nature and description as to which title is vested in the State of Louisiana, together with all islands arising therein and other lands formed by accretion or by reliction, where allowed by law, excepting tax adjudicated lands, and not presently under mineral lease on June 12, 2024, situated in De Soto and Natchitoches Parishes, Louisiana, and more particularly described as follows: Beginning at the Southeast corner of State Lease No. 20159 and the Southwest corner of the retained Area B of State Lease No. 20721 having Coordinates of X = 1,708,190.00 and Y = 461,670.00; thence along the South boundary of said State Lease No. 20721 East 5,193.13 feet to a point having Coordinates of X = 1,713,383.13 and Y = 461,670.00, a point on the West boundary of State Lease No. 22171; thence along the West boundary of said State Lease No. 22171 South 01 degrees 04 minutes 08 seconds East 5,449.97 feet to the Northeast corner of State Lease No. 22170 having Coordinates of X = 1,713,484.79 and Y = 456,220.97; thence along the North boundary of said State Lease No. 22170 North 88 degrees 32 minutes 36 seconds West 5,277.22 feet to the Northeast corner of State Lease No. 21781 having Coordinates of X = 1,708,209.27 and Y = 456,355.14; thence North 00 degrees 12 minutes 28 seconds West 5,314.90 feet to the point of beginning, containing approximately **12 acres**, all as more particularly outlined on a plat on file in the Office of Mineral Resources, Department of Natural Resources. All bearings, distances and coordinates are based on Louisiana Coordinate System of 1927, (North or South Zone), where applicable.

NOTE: The above description of the Tract nominated for lease has been provided and corrected, where required, exclusively by the nomination party. Any mineral lease selected from this Tract and awarded by the Louisiana State Mineral and Energy Board shall be without warranty of any kind, either express, implied, or statutory, including, but not limited to, the implied warranties of merchantability and fitness for a particular purpose. Should the mineral lease awarded by the Louisiana State Mineral and Energy Board be subsequently modified, cancelled or abrogated due to the existence of conflicting leases, operating agreements, private claims or other future obligations or conditions which may affect all or any portion of the leased Tract, it shall not relieve the Lessee of the obligation to pay any bonus due thereon to the Louisiana State Mineral and Energy Board, nor shall the Louisiana State Mineral and Energy Board be obligated to refund any consideration paid by the Lessor prior to such modification, cancellation, or abrogation, including, but not limited to, bonuses, rentals and royalties.

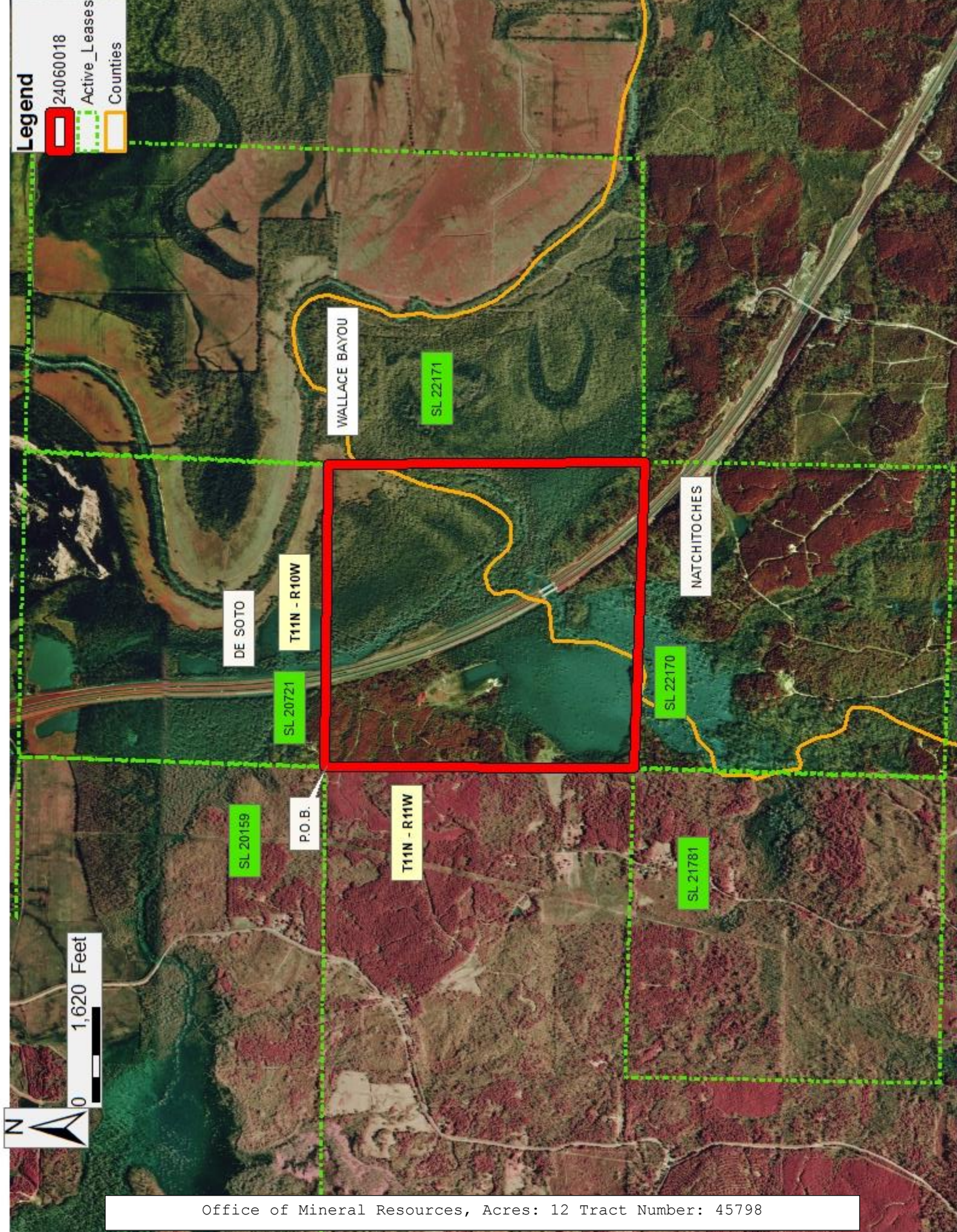
NOTE: Well to be excluded from the above description and any leases awarded out of the above description is as follows:

- 1) HA RA SUJ; Adams 19H #1 (Serial #243497)

NOTE: The Office of Mineral Resources will require a minimum bonus of \$2000 per acre and a minimum royalty of 25%.

Applicant: STAFF OFFICE OF MINERAL RESOURCES

Bidder	Cash Payment	Price/ Acre	Rental	Oil	Gas	Other



TRACT 45799 - Portion of Blocks 1, and 31, West Cameron Area, Revised, Cameron Parish, Louisiana

All of the lands now or formerly constituting the beds and bottoms of all water bodies of every nature and description as to which title is vested in the State of Louisiana, together with all islands arising therein and other lands formed by accretion or by reliction, where allowed by law, excepting tax adjudicated lands, and not presently under mineral lease on June 12, 2024, situated in Cameron Parish, Louisiana, and more particularly described as follows: Beginning at a point having Coordinates of X = 1,434,247.00 and Y = 404,052.00; thence East 10,603.00 feet to a point having Coordinates of X = 1,444,850.00 and Y = 404,052.00; thence South 9,457.00 feet to a point having Coordinates of X = 1,444,850.00 and Y = 394,595.00; thence West 10,603.00 feet to a point having Coordinates of X = 1,434,247.00 and Y = 394,595.00; thence North 9,457.00 feet to the point of beginning, **LESS AND EXCEPT** any portion of the above nomination that extends south of the Louisiana Coastline, as decreed by the Supreme Court of the United States, as determined by a Special Master appointed therein, in litigation styled *United States v. State of Louisiana et al No. 9 Original*, in 1975, containing approximately **463 acres**, all as more particularly outlined on a plat on file in the Office of Mineral Resources, Department of Natural Resources. All bearings, distances and coordinates are based on Louisiana Coordinate System of 1927, (North or South Zone), where applicable.

NOTE: The above description of the Tract nominated for lease has been provided and corrected, where required, exclusively by the nomination party. Any mineral lease selected from this Tract and awarded by the Louisiana State Mineral and Energy Board shall be without warranty of any kind, either express, implied, or statutory, including, but not limited to, the implied warranties of merchantability and fitness for a particular purpose. Should the mineral lease awarded by the Louisiana State Mineral and Energy Board be subsequently modified, cancelled or abrogated due to the existence of conflicting leases, operating agreements, private claims or other future obligations or conditions which may affect all or any portion of the leased Tract, it shall not relieve the Lessee of the obligation to pay any bonus due thereon to the Louisiana State Mineral and Energy Board, nor shall the Louisiana State Mineral and Energy Board be obligated to refund any consideration paid by the Lessor prior to such modification, cancellation, or abrogation, including, but not limited to, bonuses, rentals and royalties.

NOTE: The Office of Mineral Resources will require a minimum bonus of \$150 per acre and a minimum royalty of 18.5%.

NOTE: The State of Louisiana does hereby reserve, and this lease shall be subject to, the imprescriptible right of surface use in the nature of a servitude in favor of the Department of Natural Resources, including its Offices and Commissions, for the sole purpose of implementing, constructing, servicing and maintaining approved coastal zone management and/or restoration projects. Utilization of any and all rights derived under this lease by the mineral lessee, its agents, successors or assigns, shall not

interfere with nor hinder the reasonable surface use by the Department of Natural Resources, its Offices or Commissions, as herein above reserved.

Applicant: STAFF OFFICE OF MINERAL RESOURCES

Bidder	Cash Payment	Price/ Acre	Rental	Oil	Gas	Other

CAMERON

T15S - R7W

P.O.B.

WC0031

WEST CAMERON AREA, REVISED

GULF OF MEXICO

WC0001

0 2,000 Feet



TRACT 45800 - Portion of Blocks 31, and 32, Main Pass Area, Revised, Plaquemines Parish, Louisiana

All of the lands now or formerly constituting the beds and bottoms of all water bodies of every nature and description as to which title is vested in the State of Louisiana, together with all islands arising therein and other lands formed by accretion or by reliction, where allowed by law, excepting tax adjudicated lands, and not presently under mineral lease on June 12, 2024, situated in Plaquemines Parish, Louisiana, and more particularly described as follows: Beginning at the Northwest corner of Block 31, Main Pass Area, Revised, said point having Coordinates of X = 2,620,600.00 and Y = 307,580.00; thence East 6,170.00 feet along the North line of said Block 31, Main Pass Area, Revised, to a point having Coordinates of X = 2,626,770.00 and Y = 307,580.00; thence South 10,730.00 feet to a point having Coordinates of X = 2,626,770.00 and Y = 296,850.00, said point being the Easternmost Northeast corner of State Lease No. 2125, as amended; thence along the northern boundary of said State Lease No. 2125, as amended, the following courses and distances, to-wit: South 83 degrees 19 minutes 25 seconds West 3,010.42 feet to a point having Coordinates of X = 2,623,780.00 and Y = 296,500.00; South 55 degrees 44 minutes 20 seconds West 3,339.46 feet to a point having Coordinates of X = 2,621,020.00 and Y = 294,620.00; and North 63 degrees 26 minutes 06 seconds West 469.57 feet to a point having Coordinates of X = 2,620,600.00 and Y = 294,830.00, said point being the Westernmost Northwestern corner of said State Lease No. 2125, as amended, said point also being on the West line of said Block 31, Main Pass Area, Revised; thence North 2,450.00 feet along said West line of said Block 31, Main Pass Area, Revised, to a point having Coordinates of X = 2,620.600.00 and Y = 297,280.00, said point also being the Northeast corner of State Lease No. 1958, as amended; thence West 9,236.90 feet along the North line of said State Lease No. 1958, as amended, to a point having Coordinates of X = 2,611,363.10 and Y = 297,280.00; thence North 1,895.83 feet to a point having Coordinates of X = 2,611,363.10 and Y = 299,175.83, said point also being the Southwest corner of State Lease No. 22175; thence along the southern, eastern and northern boundaries of said State Lease No. 22175 the following courses and distances, to-wit: East 8,191.90 feet to a point having Coordinates of X = 2,619,555.00 and Y = 299,175.83, said point being the Southeast corner of said State Lease No. 22175; North 7,350.67 feet to a point having Coordinates of X = 2,619,555.00 and Y = 306,526.00 said point being the Northeast corner of said State Lease No. 22175; West 1,508.38 feet to a point having Coordinates of X = 2,618,046.62 and Y = 306,526.00, said point being the Northernmost Northwest corner of said State Lease No. 22175; and South 50 degrees 51 minutes 38 seconds West 8,617.08 feet to a point having Coordinates of X = 2,611,363.10 and Y = 301,087.33, said point being the Southernmost Northwest corner of said State Lease No. 22175; thence North 1,450.00 feet to a point having Coordinates of X = 2,611,363.10 and Y = 302,537.33; thence North 50 degrees 51 minutes 38 seconds East 7,988.89 feet to a point having Coordinates of X = 2,617,559.42 and Y = 307,580.00, said point being on the North line of Block 32, Main Pass Area, Revised; thence East 3,040.58 feet along on said North line of said Block 32, Main Pass Area, Revised, to the Point of Beginning, containing approximately **2,494.44 acres,**

all as more particularly outlined on a plat on file in the Office of Mineral Resources, Department of Natural Resources. All bearings, distances and coordinates are based on Louisiana Coordinate System of 1927, (North or South Zone), where applicable.

NOTE: The above description of the Tract nominated for lease has been provided and corrected, where required, exclusively by the nomination party. Any mineral lease selected from this Tract and awarded by the Louisiana State Mineral and Energy Board shall be without warranty of any kind, either express, implied, or statutory, including, but not limited to, the implied warranties of merchantability and fitness for a particular purpose. Should the mineral lease awarded by the Louisiana State Mineral and Energy Board be subsequently modified, cancelled or abrogated due to the existence of conflicting leases, operating agreements, private claims or other future obligations or conditions which may affect all or any portion of the leased Tract, it shall not relieve the Lessee of the obligation to pay any bonus due thereon to the Louisiana State Mineral and Energy Board, nor shall the Louisiana State Mineral and Energy Board be obligated to refund any consideration paid by the Lessor prior to such modification, cancellation, or abrogation, including, but not limited to, bonuses, rentals and royalties.

NOTE: The State of Louisiana does hereby reserve, and this lease shall be subject to, the imprescriptible right of surface use in the nature of a servitude in favor of the Department of Natural Resources, including its Offices and Commissions, for the sole purpose of implementing, constructing, servicing and maintaining approved coastal zone management and/or restoration projects. Utilization of any and all rights derived under this lease by the mineral lessee, its agents, successors or assigns, shall not interfere with nor hinder the reasonable surface use by the Department of Natural Resources, its Offices or Commissions, as herein above reserved.

NOTE: This tract is located in an area designated by the Louisiana Legislature or the Wildlife and Fisheries Commission as a Public Oyster Seed Ground, Reservation, or area of Calcasieu or Sabine Lake. Proposed projects occurring in these areas will be evaluated on a case by case basis by Louisiana Department of Wildlife & Fisheries. Modifications to proposed project features including, but not limited to, access routes, well sites, flowlines, and appurtenant structures maybe required by the Louisiana Department of Wildlife and Fisheries. In addition, compensatory mitigation will be required to offset unavoidable habitat impacts.

Applicant: ROBERT A. SCHROEDER, INC.

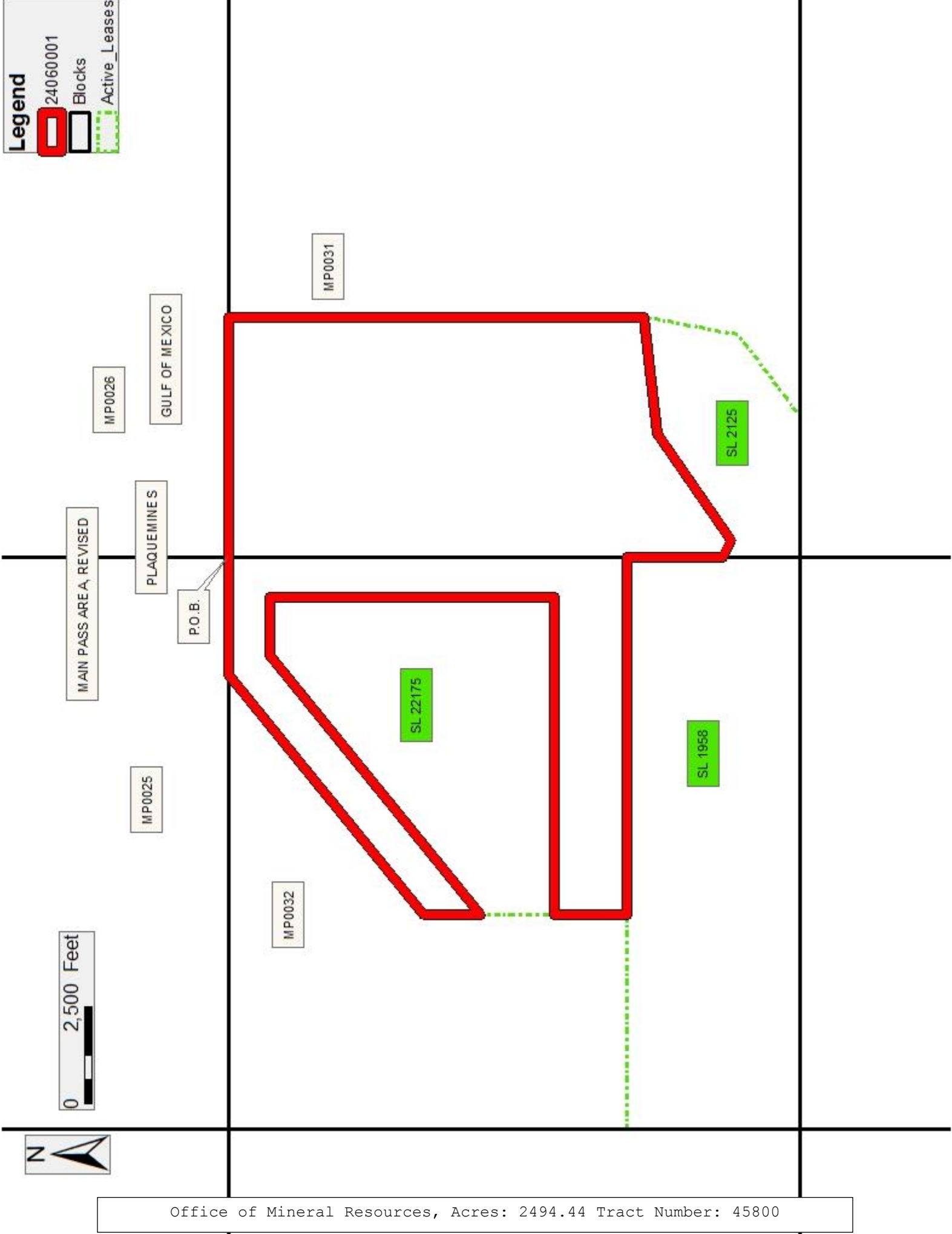
Bidder	Cash Payment	Price/ Acre	Rental	Oil	Gas	Other

Legend

24060001

Blocks

Active_Leases



TRACT 45801 - Plaquemines Parish, Louisiana

All of the lands now or formerly constituting the beds and bottoms of all water bodies of every nature and description as to which title is vested in the State of Louisiana, together with all islands arising therein and other lands formed by accretion or by reliction, where allowed by law, excepting tax adjudicated lands, and not presently under mineral lease on June 12, 2024, situated in Plaquemines Parish, Louisiana, and more particularly described as follows: Beginning at a point having Coordinates of X = 2,620,546.95 and Y = 198,121.88; thence North 88 degrees 23 minutes 53 seconds East 10,618.01 feet to a point having Coordinates of X = 2,631,160.81 and Y = 198,418.71; thence South 01 degrees 09 minutes 45 seconds East 9,520.51 feet to the Northwest corner of State Lease No. 22160 having Coordinates of X = 2,631,353.97 and Y = 188,900.15; thence along the boundaries of said State Lease No. 22160 the following courses: South 01 degrees 50 minutes 48 seconds East 2,661.69 feet to a point having Coordinates of X = 2,631,439.74 and Y = 186,239.85, West 1,300.67 feet to a point having Coordinates of X = 2,630,139.08 and Y = 186,239.85 and South approximately 2,793 feet to its Southwest corner and a point of intersection with the North boundary of State Lease No. 451, as amended; thence Westerly approximately 1,202 feet along the North boundary of said State Lease No. 451 to a point of intersection with the Southeast corner of State Lease No. 2203, as amended; thence along the boundary of said State Lease No. 2203 the following courses: Northerly approximately 2,752 feet, Westerly approximately 2,778 feet, Northerly approximately 2,640 feet, Westerly approximately 2,640 feet, Northerly approximately 2,640 feet, Westerly approximately 2,640 feet and Northerly approximately 2,620 feet to its most Northern Northeast corner; thence North 01 degrees 35 minutes 16 seconds West approximately 4,296 feet to the point of beginning, containing approximately **2,487 acres**, all as more particularly outlined on a plat on file in the Office of Mineral Resources, Department of Natural Resources. All bearings, distances and coordinates are based on Louisiana Coordinate System of 1927, (North or South Zone), where applicable.

NOTE: The above description of the Tract nominated for lease has been provided and corrected, where required, exclusively by the nomination party. Any mineral lease selected from this Tract and awarded by the Louisiana State Mineral and Energy Board shall be without warranty of any kind, either express, implied, or statutory, including, but not limited to, the implied warranties of merchantability and fitness for a particular purpose. Should the mineral lease awarded by the Louisiana State Mineral and Energy Board be subsequently modified, cancelled or abrogated due to the existence of conflicting leases, operating agreements, private claims or other future obligations or conditions which may affect all or any portion of the leased Tract, it shall not relieve the Lessee of the obligation to pay any bonus due thereon to the Louisiana State Mineral and Energy Board, nor shall the Louisiana State Mineral and Energy Board be obligated to refund any consideration paid by the Lessor prior to such modification, cancellation, or abrogation, including, but not limited to, bonuses, rentals and royalties.

NOTE: The State of Louisiana does hereby reserve, and this lease shall be subject to, the imprescriptible right of surface use in the nature of a servitude in favor of the Department of Natural Resources, including its Offices and Commissions, for the sole purpose of implementing, constructing, servicing and maintaining approved coastal zone management and/or restoration projects. Utilization of any and all rights derived under this lease by the mineral lessee, its agents, successors or assigns, shall not interfere with nor hinder the reasonable surface use by the Department of Natural Resources, its Offices or Commissions, as herein above reserved.

Applicant: MARK A. O'NEAL & ASSOCIATES, INC.

Bidder	Cash Payment	Price/ Acre	Rental	Oil	Gas	Other

Legend



24060011



Active_Leases



0 2,500 Feet

PLAQUEMINES

T22S - R30E

T22S - R31E

GULF OF MEXICO

P.O.B.

SL 2203

SL 22160

SL 451

TRACT 45802 - Plaquemines Parish, Louisiana

All of the lands now or formerly constituting the beds and bottoms of all water bodies of every nature and description as to which title is vested in the State of Louisiana, together with all islands arising therein and other lands formed by accretion or by reliction, where allowed by law, excepting tax adjudicated lands, and not presently under mineral lease on June 12, 2024, situated in Plaquemines Parish, Louisiana, and more particularly described as follows: Beginning at a point having Coordinates of X = 2,631,160.81 and Y = 198,418.71; thence North 88 degrees 52 minutes 08 seconds East 10,473.30 feet to a point having Coordinates of X = 2,641,632.07 and Y = 198,625.45; thence South 01 degrees 43 minutes 32 seconds East 6,750.88 feet to a point having Coordinates of X = 2,641,835.36 and Y = 191,877.64; thence South 88 degrees 13 minutes 15 seconds West 10,540.25 feet to a point having Coordinates of X = 2,631,300.19 and Y = 191,550.40; thence North 01 degrees 09 minutes 45 seconds West 6,869.72 feet to the point of beginning, **LESS AND EXCEPT** any right, title, and interest in lands owned by and not under lease from the State of Louisiana, on behalf of the Plaquemines Parish School Board, situated in Section 16, Township 22 South, Range 31 East, Plaquemines Parish, Louisiana, contained within the above described tract, containing approximately **1,505 acres**, all as more particularly outlined on a plat on file in the Office of Mineral Resources, Department of Natural Resources. All bearings, distances and coordinates are based on Louisiana Coordinate System of 1927, (North or South Zone), where applicable.

NOTE: The above description of the Tract nominated for lease has been provided and corrected, where required, exclusively by the nomination party. Any mineral lease selected from this Tract and awarded by the Louisiana State Mineral and Energy Board shall be without warranty of any kind, either express, implied, or statutory, including, but not limited to, the implied warranties of merchantability and fitness for a particular purpose. Should the mineral lease awarded by the Louisiana State Mineral and Energy Board be subsequently modified, cancelled or abrogated due to the existence of conflicting leases, operating agreements, private claims or other future obligations or conditions which may affect all or any portion of the leased Tract, it shall not relieve the Lessee of the obligation to pay any bonus due thereon to the Louisiana State Mineral and Energy Board, nor shall the Louisiana State Mineral and Energy Board be obligated to refund any consideration paid by the Lessor prior to such modification, cancellation, or abrogation, including, but not limited to, bonuses, rentals and royalties.

Applicant: MARK A. O'NEAL & ASSOCIATES, INC.

Bidder	Cash Payment	Price/ Acre	Rental	Oil	Gas	Other

Legend



PLAQUEMINES

T22S - R31E

GRAND PASS

GULF OF MEXICO

P.O.B.

0 2,000 Feet



Office of Mineral Resources, Acres: 1505 Tract Number: 45802

TRACT 45803 - Plaquemines Parish, Louisiana

All of the lands now or formerly constituting the beds and bottoms of all water bodies of every nature and description as to which title is vested in the State of Louisiana, together with all islands arising therein and other lands formed by accretion or by reliction, where allowed by law, excepting tax adjudicated lands, and not presently under mineral lease on June 12, 2024, situated in Plaquemines Parish, Louisiana, and more particularly described as follows: Beginning at a point having Coordinates of X = 2,631,300.19 and Y = 191,550.40; thence North 88 degrees 13 minutes 15 seconds East 10,540.25 feet to a point having Coordinates of X = 2,641,835.36 and Y = 191,877.64; thence South 01 degrees 43 minutes 32 seconds East approximately 8,238 feet to a point on the North boundary of State Lease No. 451, as amended; thence Westerly approximately 8,076 feet along the North boundary of said State Lease No. 451 to a point of intersection with Southeast corner of State Lease No. 22160; thence along the boundaries of said State Lease No. 22160 the following courses: North 14 degrees 10 minutes 21 seconds East approximately 5,712 feet to a point having Coordinates of X = 2,635,407.09 and Y = 189,066.18 and South 87 degrees 39 minutes 15 seconds West 4,056.52 feet to its most Northern Northwest corner having Coordinates of X = 2,631,353.97 and Y = 188,900.15; thence North 01 degrees 09 minutes 45 seconds West 2,650.79 feet to the point of beginning, **LESS AND EXCEPT** any right, title, and interest in lands owned by and not under lease from the State of Louisiana, on behalf of the Plaquemines Parish School Board, situated in Section 16, Township 22 South, Range 31 East, Plaquemines Parish, Louisiana, contained within the above described tract, containing approximately **1,534 acres**, all as more particularly outlined on a plat on file in the Office of Mineral Resources, Department of Natural Resources. All bearings, distances and coordinates are based on Louisiana Coordinate System of 1927, (North or South Zone), where applicable.

NOTE: The above description of the Tract nominated for lease has been provided and corrected, where required, exclusively by the nomination party. Any mineral lease selected from this Tract and awarded by the Louisiana State Mineral and Energy Board shall be without warranty of any kind, either express, implied, or statutory, including, but not limited to, the implied warranties of merchantability and fitness for a particular purpose. Should the mineral lease awarded by the Louisiana State Mineral and Energy Board be subsequently modified, cancelled or abrogated due to the existence of conflicting leases, operating agreements, private claims or other future obligations or conditions which may affect all or any portion of the leased Tract, it shall not relieve the Lessee of the obligation to pay any bonus due thereon to the Louisiana State Mineral and Energy Board, nor shall the Louisiana State Mineral and Energy Board be obligated to refund any consideration paid by the Lessor prior to such modification, cancellation, or abrogation, including, but not limited to, bonuses, rentals and royalties.

NOTE: The State of Louisiana does hereby reserve, and this lease shall be subject to, the imprescriptible right of surface use in the nature of a servitude in favor of the Department of Natural Resources, including its

Offices and Commissions, for the sole purpose of implementing, constructing, servicing and maintaining approved coastal zone management and/or restoration projects. Utilization of any and all rights derived under this lease by the mineral lessee, its agents, successors or assigns, shall not interfere with nor hinder the reasonable surface use by the Department of Natural Resources, its Offices or Commissions, as herein above reserved.

Applicant: MARK A. O'NEAL & ASSOCIATES, INC.

Bidder	Cash Payment	Price/ Acre	Rental	Oil	Gas	Other

Legend



24060013

Active_Leases

0 2,000 Feet



PLAQUEMINES

GRAND PASS

GULF OF MEXICO

T22S - R31E

P.O.B.

SL 22160

SL 451

TRACT 45804 - Plaquemines Parish, Louisiana

All of the lands now or formerly constituting the beds and bottoms of all water bodies of every nature and description as to which title is vested in the State of Louisiana, together with all islands arising therein and other lands formed by accretion or by reliction, where allowed by law, excepting tax adjudicated lands, and not presently under mineral lease on June 12, 2024, situated in Plaquemines Parish, Louisiana, and more particularly described as follows: Beginning at a point having Coordinates of X = 2,641,915.85 and Y = 189,205.99; thence North 88 degrees 19 minutes 20 seconds East 10,565.55 feet to a point having Coordinates of X = 2,652,476.87 and Y = 189,515.35; thence South 01 degrees 37 minutes 25 seconds East 5,584.21 feet to a point having Coordinates of X = 2,652,635.09 and Y = 183,933.39; thence South 88 degrees 21 minutes 43 seconds West approximately 9,646 feet to the Northeast corner of State Lease No. 451, as amended; thence Westerly approximately 910 feet along the North boundary of said State Lease No. 451 to a point of intersection with a line having a bearing South 01 degrees 43 minutes 32 seconds East from a point having Coordinates of X = 2,641,915.85 and Y = 189,205.99; thence North 01 degrees 43 minutes 32 seconds West approximately 5,565 feet to the point of beginning, containing approximately **1,353 acres**, all as more particularly outlined on a plat on file in the Office of Mineral Resources, Department of Natural Resources. All bearings, distances and coordinates are based on Louisiana Coordinate System of 1927, (North or South Zone), where applicable.

NOTE: The above description of the Tract nominated for lease has been provided and corrected, where required, exclusively by the nomination party. Any mineral lease selected from this Tract and awarded by the Louisiana State Mineral and Energy Board shall be without warranty of any kind, either express, implied, or statutory, including, but not limited to, the implied warranties of merchantability and fitness for a particular purpose. Should the mineral lease awarded by the Louisiana State Mineral and Energy Board be subsequently modified, cancelled or abrogated due to the existence of conflicting leases, operating agreements, private claims or other future obligations or conditions which may affect all or any portion of the leased Tract, it shall not relieve the Lessee of the obligation to pay any bonus due thereon to the Louisiana State Mineral and Energy Board, nor shall the Louisiana State Mineral and Energy Board be obligated to refund any consideration paid by the Lessor prior to such modification, cancellation, or abrogation, including, but not limited to, bonuses, rentals and royalties.

NOTE: The State of Louisiana does hereby reserve, and this lease shall be subject to, the imprescriptible right of surface use in the nature of a servitude in favor of the Department of Natural Resources, including its Offices and Commissions, for the sole purpose of implementing, constructing, servicing and maintaining approved coastal zone management and/or restoration projects. Utilization of any and all rights derived under this lease by the mineral lessee, its agents, successors or assigns, shall not interfere with nor hinder the reasonable surface use by the Department of Natural Resources, its Offices or Commissions, as herein above reserved.

Applicant: MARK A. O'NEAL & ASSOCIATES, INC.

Bidder	Cash Payment	Price/ Acre	Rental	Oil	Gas	Other

Legend

24060015

Active_Leases

0 2,000 Feet



PLAQUEMINES

GULF OF MEXICO

T22S - R31E

P.O.B.

SL 451

TRACT 45805 - Terrebonne Parish, Louisiana

All of the lands now or formerly constituting the beds and bottoms of all water bodies of every nature and description as to which title is vested in the State of Louisiana, together with all islands arising therein and other lands formed by accretion or by reliction, where allowed by law, excepting tax adjudicated lands, and not presently under mineral lease on June 12, 2024, situated in Terrebonne Parish, Louisiana, and more particularly described as follows: Beginning at a point having Coordinates of X = 2,269,762.06 and Y = 186,976.45, said point being on the Southern boundary of State Lease No. 199, as amended; thence along the boundary of said State Lease No. 199, as amended, the following: North 89 degrees 34 minutes 50 seconds East 486.00 feet to a point having Coordinates X = 2,270,248.04 and Y = 186,980.01, North 89 degrees 34 minutes 50 seconds East 3,328.43 feet to a point having Coordinates X = 2,273,576.38 and Y = 187,004.38, North 06 degrees 12 minutes 15 seconds West 1,392.69 feet to a point having Coordinates X = 2,273,425.87 and Y = 188,388.91, North 11 degrees 26 minutes 05 seconds West 488.46 feet to a point having Coordinates X = 2,273,329.03 and Y = 188,867.68, North 89 degrees 34 minutes 50 seconds East 1,285.28 feet to a point having Coordinates X = 2,274,614.27 and Y = 188,877.09, South 00 degrees 25 minutes 10 seconds East 1,865.06 feet to a point having Coordinates X = 2,274,627.93, Y = 187,012.08, and North 89 degrees 34 minutes 50 seconds East 1,829.72 feet to a point having Coordinates X = 2,276,457.60, Y = 187,025.47; thence South 03 degrees 12 minutes 43 seconds East 11,957.90 feet to a point having Coordinates X = 2,277,127.61 and Y = 175,086.36, said point being on the Northern boundary of State Lease No. 188, as amended; thence along the boundary of said State Lease No. 188, as amended, the following: South 89 degrees 35 minutes 00 seconds West 2,850.07 feet along the North boundary of State Lease No. 188 to a point having Coordinates X = 2,274,277.61 and Y = 175,065.64, South 2,079.29 feet to a point having Coordinates X = 2,274,277.61 and Y = 172,986.36, South 45 degrees 00 minutes 00 seconds West 360.00 feet to a point having Coordinates 2,274,023.05 and Y = 172,731.80, and West 2,140.40 feet to a point being its Northwesternmost corner having Coordinates X 2,271,882.65 and Y = 172,731.80, said point also being the Northeasternmost corner of State Lease No. 301, as amended; thence along the boundary of said State Lease No. 301, as amended, the following: West 1,159.60 feet to a point having Coordinates of X = 2,270,723.05 and Y = 172,731.80 and South 53 degrees 30 minutes 00 seconds West 1,760.84 feet to a point being the Southeast corner of State Lease No. 21848, as amended, having Coordinates of X = 2,269,307.59 and Y = 171,684.41; thence along the boundary of said State Lease No. 21848, as amended, the following: North 15 degrees 49 minutes 19 seconds West 130.54 feet to a point having Coordinates of X = 2,269,272.00 and Y = 171,810.00, North 13 degrees 40 minutes 32 seconds West 693.67 feet to a point having Coordinates of X = 2,269,108.00 and Y = 172,484.01, North 07 degrees 41 minutes 46 seconds West 224.02 feet to a point having Coordinates X = 2,269,078.00 and Y = 172,706.01, North 00 degrees 34 minutes 43 seconds West 198.01 feet to a point having Coordinates X = 2,269,076.00 and Y = 172,904.01, North 06 degrees 36 minutes 48 seconds East 138.92 feet to a point having Coordinates X = 2,269,092.00 and Y = 173,042.00, North 13 degrees 20 minutes 55 seconds East 242.55 feet to a

point having Coordinates X = 2,269,148.00 and Y = 173,278.00, North 12 degrees 58 minutes 10 seconds East 409.65 feet to a point having Coordinates X = 2,269,239.94 and Y = 173,677.20, and South 88 degrees 20 minutes 33 seconds West 629.71 feet to a point having Coordinates X = 2,268,610.49 and Y = 173,658.99, said point also being a point of the boundary of said State Lease No. 301, as amended; thence North 1,619.21 feet to a point having Coordinates X = 2,268,610.49 and Y = 175,278.20; thence North 05 degrees 37 minutes 19 seconds East 11,754.79 feet to the point of beginning, containing approximately **2,447.27 acres**, all as more particularly outlined on a plat on file in the Office of Mineral Resources, Department of Natural Resources. All bearings, distances and coordinates are based on Louisiana Coordinate System of 1927, (North or South Zone), where applicable.

NOTE: The above description of the Tract nominated for lease has been provided and corrected, where required, exclusively by the nomination party. Any mineral lease selected from this Tract and awarded by the Louisiana State Mineral and Energy Board shall be without warranty of any kind, either express, implied, or statutory, including, but not limited to, the implied warranties of merchantability and fitness for a particular purpose. Should the mineral lease awarded by the Louisiana State Mineral and Energy Board be subsequently modified, cancelled or abrogated due to the existence of conflicting leases, operating agreements, private claims or other future obligations or conditions which may affect all or any portion of the leased Tract, it shall not relieve the Lessee of the obligation to pay any bonus due thereon to the Louisiana State Mineral and Energy Board, nor shall the Louisiana State Mineral and Energy Board be obligated to refund any consideration paid by the Lessor prior to such modification, cancellation, or abrogation, including, but not limited to, bonuses, rentals and royalties.

NOTE: The State of Louisiana does hereby reserve, and this lease shall be subject to, the imprescriptible right of surface use in the nature of a servitude in favor of the Department of Natural Resources, including its Offices and Commissions, for the sole purpose of implementing, constructing, servicing and maintaining approved coastal zone management and/or restoration projects. Utilization of any and all rights derived under this lease by the mineral lessee, its agents, successors or assigns, shall not interfere with nor hinder the reasonable surface use by the Department of Natural Resources, its Offices or Commissions, as herein above reserved.

Applicant: MAGELLAN ENERGY, LLC

Bidder	Cash Payment	Price/ Acre	Rental	Oil	Gas	Other

Legend

24060010

Active_Leases

TIMBALIER BAY

SL 188

TERRE BONNE

SL 199

TERRE BONNE BAY

P.O.B.

SL 301

SL 21848

0 2,500 Feet



TRACT 45806 - Plaquemines Parish, Louisiana

All of the lands now or formerly constituting the beds and bottoms of all water bodies of every nature and description as to which title is vested in the State of Louisiana, together with all islands arising therein and other lands formed by accretion or by reliction, where allowed by law, excepting tax adjudicated lands, and not presently under mineral lease on June 12, 2024, situated in Plaquemines Parish, Louisiana, and more particularly described as follows: Beginning at a point having Coordinates of X = 2,652,635.09 and Y = 183,933.39; thence South 01 degrees 37 minutes 25 seconds East 10,232.32 feet to a point having Coordinates of X = 2,652,925.01 and Y = 173,705.18; thence South 88 degrees 16 minutes 13 seconds West approximately 2,699 feet to the Southeast corner of Operating Agreement 0304; thence along the boundaries of said AO 0304 the following courses: Northerly approximately 5,250 feet and Westerly approximately 2,555 feet to its Northwest corner and the Northeast corner of the Eastern portion of Operating Agreement 0006; thence Westerly approximately 2,611 feet along the north boundary of said AO 0006 to its Northwest corner and the Northeast corner of Western portion of Operating Agreement 0005; thence Westerly approximately 1,787 feet along the north boundary of said AO 0005 to its Northwest corner and a point on the East boundary of State Lease No. 451, as amended; thence Northerly approximately 4,982 feet along the East boundary of said State Lease No. 451 to its Northeast corner; thence North 88 degrees 21 minutes 43 seconds East approximately 9,646 feet to the point of beginning, containing approximately **1,432 acres**, all as more particularly outlined on a plat on file in the Office of Mineral Resources, Department of Natural Resources. All bearings, distances and coordinates are based on Louisiana Coordinate System of 1927, (North or South Zone), where applicable.

NOTE: The above description of the Tract nominated for lease has been provided and corrected, where required, exclusively by the nomination party. Any mineral lease selected from this Tract and awarded by the Louisiana State Mineral and Energy Board shall be without warranty of any kind, either express, implied, or statutory, including, but not limited to, the implied warranties of merchantability and fitness for a particular purpose. Should the mineral lease awarded by the Louisiana State Mineral and Energy Board be subsequently modified, cancelled or abrogated due to the existence of conflicting leases, operating agreements, private claims or other future obligations or conditions which may affect all or any portion of the leased Tract, it shall not relieve the Lessee of the obligation to pay any bonus due thereon to the Louisiana State Mineral and Energy Board, nor shall the Louisiana State Mineral and Energy Board be obligated to refund any consideration paid by the Lessor prior to such modification, cancellation, or abrogation, including, but not limited to, bonuses, rentals and royalties.

NOTE: The State of Louisiana does hereby reserve, and this lease shall be subject to, the imprescriptible right of surface use in the nature of a servitude in favor of the Department of Natural Resources, including its Offices and Commissions, for the sole purpose of implementing, constructing, servicing and maintaining approved coastal zone management and/or

restoration projects. Utilization of any and all rights derived under this lease by the mineral lessee, its agents, successors or assigns, shall not interfere with nor hinder the reasonable surface use by the Department of Natural Resources, its Offices or Commissions, as herein above reserved.

Applicant: MARK A. O'NEAL & ASSOCIATES, INC.

Bidder	Cash Payment	Price/ Acre	Rental	Oil	Gas	Other

Legend



24060014



Active_Leases



0 2,000 Feet

PLAQUEMINES

GULF OF MEXICO

T22S - R31E

T23S - R31E

P.O.B.

SL 451

A0005

A0006

A0304

A0006

A0005