

TRACT 45814 - Lafourche Parish, Louisiana

All of the lands now or formerly constituting the beds and bottoms of all water bodies of every nature and description as to which title is vested in the State of Louisiana, together with all islands arising therein and other lands formed by accretion or by reliction, where allowed by law, excepting tax adjudicated lands, and not presently under mineral lease on July 10, 2024, situated in Lafourche Parish, Louisiana, and more particularly described as follows: Beginning at a point having Coordinates of X = 2,277,292.95 and Y = 330,004.01; thence West 10,435.48 feet to a point having Coordinates of X = 2,266,857.47 and Y = 330,004.01; thence North 10,435.48 feet to a point having Coordinates of X = 2,266,857.47 and Y = 340,439.49; thence East 10,435.48 feet to a point having Coordinates of X = 2,277,292.95 and Y = 340,439.49; thence South 10,435.48 feet to the point of beginning, **LESS AND EXCEPT** any right, title, and interest in lands owned by and not under lease from the State of Louisiana, on behalf of the Lafourche Parish School Board, situated in Section 16, Township 17 South, Range 19 East, Lafourche Parish, Louisiana, contained within the above described tract, containing approximately **82 acres**, all as more particularly outlined on a plat on file in the Office of Mineral Resources, Department of Natural Resources. All bearings, distances and coordinates are based on Louisiana Coordinate System of 1927, (North or South Zone), where applicable.

NOTE: The above description of the Tract nominated for lease has been provided and corrected, where required, exclusively by the nomination party. Any mineral lease selected from this Tract and awarded by the Louisiana State Mineral and Energy Board shall be without warranty of any kind, either express, implied, or statutory, including, but not limited to, the implied warranties of merchantability and fitness for a particular purpose. Should the mineral lease awarded by the Louisiana State Mineral and Energy Board be subsequently modified, cancelled or abrogated due to the existence of conflicting leases, operating agreements, private claims or other future obligations or conditions which may affect all or any portion of the leased Tract, it shall not relieve the Lessee of the obligation to pay any bonus due thereon to the Louisiana State Mineral and Energy Board, nor shall the Louisiana State Mineral and Energy Board be obligated to refund any consideration paid by the Lessor prior to such modification, cancellation, or abrogation, including, but not limited to, bonuses, rentals and royalties.

NOTE: The State of Louisiana does hereby reserve, and this lease shall be subject to, the imprescriptible right of surface use in the nature of a servitude in favor of the Department of Natural Resources, including its Offices and Commissions, for the sole purpose of implementing, constructing, servicing and maintaining approved coastal zone management and/or restoration projects. Utilization of any and all rights derived under this lease by the mineral lessee, its agents, successors or assigns, shall not interfere with nor hinder the reasonable surface use by the Department of Natural Resources, its Offices or Commissions, as herein above reserved.

Applicant: REEL MAGIC, LLC

Bidder	Cash Payment	Price/ Acre	Rental	Oil	Gas	Other



0 2,500 Feet

LAFOURCHE

T17S- R20E

T17S- R19E

BAYOU LAFOURCHE

P.O.B.

BAYOU L'E AU BLEU



TRACT 45815 - Lafourche Parish, Louisiana

All of the lands now or formerly constituting the beds and bottoms of all water bodies of every nature and description as to which title is vested in the State of Louisiana, together with all islands arising therein and other lands formed by accretion or by reliction, where allowed by law, excepting tax adjudicated lands, and not presently under mineral lease on July 10, 2024, situated in Lafourche Parish, Louisiana, and more particularly described as follows: Beginning at a point having Coordinates of X = 2,277,292.95 and Y = 330,004.01; thence North 10,435.48 feet to a point having Coordinates of X = 2,277,292.95 and Y = 340,439.49; thence East 10,435.48 feet to a point having Coordinates of X = 2,287,728.42 and Y = 340,439.49; thence South 10,435.48 feet to a point having Coordinates of X = 2,287,728.42 and Y = 330,004.01; thence West 10,435.48 feet to the point of beginning, containing approximately **62 acres**, all as more particularly outlined on a plat on file in the Office of Mineral Resources, Department of Natural Resources. All bearings, distances and coordinates are based on Louisiana Coordinate System of 1927, (North or South Zone), where applicable.

NOTE: The above description of the Tract nominated for lease has been provided and corrected, where required, exclusively by the nomination party. Any mineral lease selected from this Tract and awarded by the Louisiana State Mineral and Energy Board shall be without warranty of any kind, either express, implied, or statutory, including, but not limited to, the implied warranties of merchantability and fitness for a particular purpose. Should the mineral lease awarded by the Louisiana State Mineral and Energy Board be subsequently modified, cancelled or abrogated due to the existence of conflicting leases, operating agreements, private claims or other future obligations or conditions which may affect all or any portion of the leased Tract, it shall not relieve the Lessee of the obligation to pay any bonus due thereon to the Louisiana State Mineral and Energy Board, nor shall the Louisiana State Mineral and Energy Board be obligated to refund any consideration paid by the Lessor prior to such modification, cancellation, or abrogation, including, but not limited to, bonuses, rentals and royalties.

NOTE: The State of Louisiana does hereby reserve, and this lease shall be subject to, the imprescriptible right of surface use in the nature of a servitude in favor of the Department of Natural Resources, including its Offices and Commissions, for the sole purpose of implementing, constructing, servicing and maintaining approved coastal zone management and/or restoration projects. Utilization of any and all rights derived under this lease by the mineral lessee, its agents, successors or assigns, shall not interfere with nor hinder the reasonable surface use by the Department of Natural Resources, its Offices or Commissions, as herein above reserved.

Applicant: REEL MAGIC, LLC

Bidder	Cash Payment	Price/ Acre	Rental	Oil	Gas	Other



LAFOURCHE

T17S - R20E

BAYOU LAFOURCHE

P.O.B.

0 2,500 Feet



TRACT 45816 - Lafourche Parish, Louisiana

All of the lands now or formerly constituting the beds and bottoms of all water bodies of every nature and description as to which title is vested in the State of Louisiana, together with all islands arising therein and other lands formed by accretion or by reliction, where allowed by law, excepting tax adjudicated lands, and not presently under mineral lease on July 10, 2024, situated in Lafourche Parish, Louisiana, and more particularly described as follows: Beginning at a point having Coordinates of X = 2,266,857.47 and Y = 330,004.01; thence East 17,040.48 feet to a point having Coordinates of X = 2,283,897.93 and Y = 330,004.01; thence South 6,390.00 feet to a point having Coordinates of X = 2,283,897.93 and Y = 323,614.03; thence West 17,040.48 feet to a point having Coordinates of X = 2,266,857.47 and Y = 323,614.03; thence North 6,390.00 to the point of beginning, containing approximately **46 acres**, all as more particularly outlined on a plat on file in the Office of Mineral Resources, Department of Natural Resources. All bearings, distances and coordinates are based on Louisiana Coordinate System of 1927, (North or South Zone), where applicable.

NOTE: The above description of the Tract nominated for lease has been provided and corrected, where required, exclusively by the nomination party. Any mineral lease selected from this Tract and awarded by the Louisiana State Mineral and Energy Board shall be without warranty of any kind, either express, implied, or statutory, including, but not limited to, the implied warranties of merchantability and fitness for a particular purpose. Should the mineral lease awarded by the Louisiana State Mineral and Energy Board be subsequently modified, cancelled or abrogated due to the existence of conflicting leases, operating agreements, private claims or other future obligations or conditions which may affect all or any portion of the leased Tract, it shall not relieve the Lessee of the obligation to pay any bonus due thereon to the Louisiana State Mineral and Energy Board, nor shall the Louisiana State Mineral and Energy Board be obligated to refund any consideration paid by the Lessor prior to such modification, cancellation, or abrogation, including, but not limited to, bonuses, rentals and royalties.

NOTE: The State of Louisiana does hereby reserve, and this lease shall be subject to, the imprescriptible right of surface use in the nature of a servitude in favor of the Department of Natural Resources, including its Offices and Commissions, for the sole purpose of implementing, constructing, servicing and maintaining approved coastal zone management and/or restoration projects. Utilization of any and all rights derived under this lease by the mineral lessee, its agents, successors or assigns, shall not interfere with nor hinder the reasonable surface use by the Department of Natural Resources, its Offices or Commissions, as herein above reserved.

Applicant: REEL MAGIC, LLC

Bidder	Cash Payment	Price/ Acre	Rental	Oil	Gas	Other



0 2,500 Feet

LAFOURCHE

T17S- R20E

T17S- R19E

BAYOU L'EAU BLEU

P.O.B.



TRACT 45817 - Portion of Blocks 32, and 33, Main Pass Area, Revised, Plaquemines Parish, Louisiana

All of the lands now or formerly constituting the beds and bottoms of all water bodies of every nature and description as to which title is vested in the State of Louisiana, together with all islands arising therein and other lands formed by accretion or by reliction, where allowed by law, excepting tax adjudicated lands, and not presently under mineral lease on July 10, 2024, situated in Plaquemines Parish, Louisiana, and more particularly described as follows: Beginning at a point having Coordinates of X = 2,605,850.00 and Y = 307,580.00, said point being the Northwest corner of Block 32, Main Pass Area, Revised; thence East 11,709.42 feet along the North line of said Block 32, Main Pass Area, Revised, to a point having Coordinates of X = 2,617,559.42 and Y = 307,580.00; thence South 50 degrees 51 minutes 38 seconds West 7,988.89 feet to a point having Coordinates of X = 2,611,363.10 and Y = 302,537.33; thence South 1,450.00 feet to a point having Coordinates of X = 2,611,363.10 and Y = 301,087.33, said point being the westernmost Northwest corner of State Lease 22175; thence South 1,911.50 feet along the West line of said State Lease 22175 to a point having Coordinates of X = 2,611,363.10 and Y = 299,175.83, said point being the Southwest corner of said State Lease 22175; thence South 1,895.83 feet to a point having Coordinates of X = 2,611,363.10 and Y = 297,280.00, said point being the North line of State Lease 1958, as amended; thence West 5,513.10 feet along said North line of said State Lease 1958, as amended, to a point having Coordinates of X = 2,605,850.00 and Y = 297,280.00, said point being the Northwest corner of said State Lease 1958, as amended, said point also being on the West line of said Block 32, Main Pass Area, Revised; thence South 4,450.00 feet along said West line of said Block 32, Main Pass Area, Revised, to a point having Coordinates of X = 2,605,850.00 and Y = 292,830.00, said point being the Southwest corner of said Block 32, Main Pass Area, Revised, said point also being the Southeast corner of Block 33, Main Pass Area, Revised; thence West 2,474.00 feet along the South line of said Block 33, Main Pass Area, Revised, to a point having Coordinates of X = 2,603,376.00 and Y = 292,830.00; thence North 14,750.00 feet to a point having Coordinates of X = 2,603,376.00 and Y = 307,580.00, said point being on the North line of said Block 33, Main Pass Area, Revised; thence East 2,474.00 feet along said North line of said Block 33, Main Pass Area, Revised, to the point of beginning, containing approximately **2,500 acres**, all as more particularly outlined on a plat on file in the Office of Mineral Resources, Department of Natural Resources. All bearings, distances and coordinates are based on Louisiana Coordinate System of 1927, (North or South Zone), where applicable.

NOTE: The above description of the Tract nominated for lease has been provided and corrected, where required, exclusively by the nomination party. Any mineral lease selected from this Tract and awarded by the Louisiana State Mineral and Energy Board shall be without warranty of any kind, either express, implied, or statutory, including, but not limited to, the implied warranties of merchantability and fitness for a particular purpose. Should the mineral lease awarded by the Louisiana State Mineral and Energy Board be subsequently modified, cancelled or abrogated due to the existence of

conflicting leases, operating agreements, private claims or other future obligations or conditions which may affect all or any portion of the leased Tract, it shall not relieve the Lessee of the obligation to pay any bonus due thereon to the Louisiana State Mineral and Energy Board, nor shall the Louisiana State Mineral and Energy Board be obligated to refund any consideration paid by the Lessor prior to such modification, cancellation, or abrogation, including, but not limited to, bonuses, rentals and royalties.

NOTE: The State of Louisiana does hereby reserve, and this lease shall be subject to, the imprescriptible right of surface use in the nature of a servitude in favor of the Department of Natural Resources, including its Offices and Commissions, for the sole purpose of implementing, constructing, servicing and maintaining approved coastal zone management and/or restoration projects. Utilization of any and all rights derived under this lease by the mineral lessee, its agents, successors or assigns, shall not interfere with nor hinder the reasonable surface use by the Department of Natural Resources, its Offices or Commissions, as herein above reserved.

NOTE: This tract is located in an area designated by the Louisiana Legislature or the Wildlife and Fisheries Commission as a Public Oyster Seed Ground, Reservation, or area of Calcasieu or Sabine Lake. Proposed projects occurring in these areas will be evaluated on a case by case basis by Louisiana Department of Wildlife & Fisheries. Modifications to proposed project features including, but not limited to, access routes, well sites, flowlines, and appurtenant structures maybe required by the Louisiana Department of Wildlife and Fisheries. In addition, compensatory mitigation will be required to offset unavoidable habitat impacts.

Applicant: ROBERT A. SCHROEDER, INC.

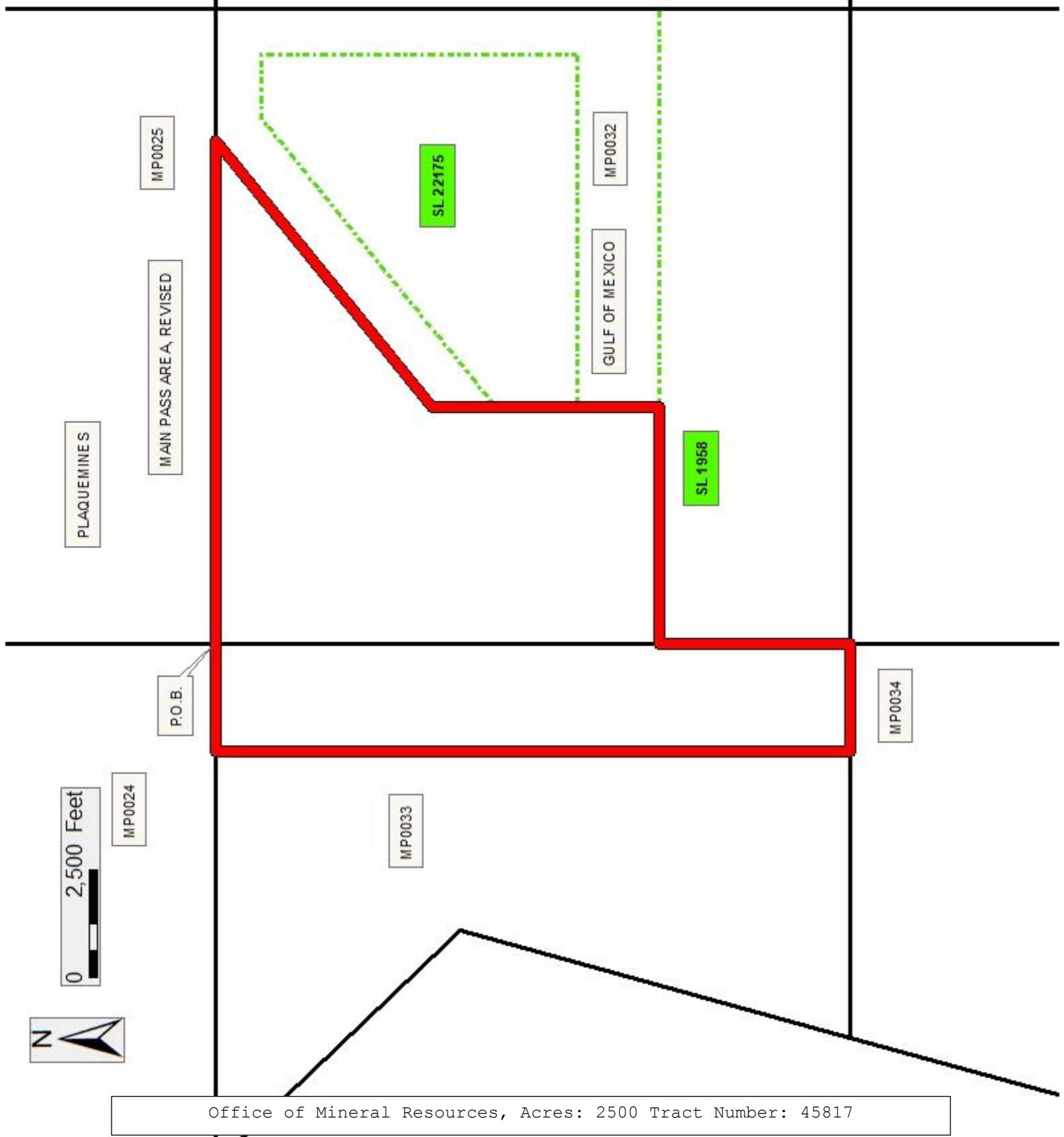
Bidder	Cash Payment	Price/ Acre	Rental	Oil	Gas	Other

Legend


24070012


Blocks


Active_Leases



TRACT 45818 - Lafourche Parish, Louisiana

All of the lands now or formerly constituting the beds and bottoms of all water bodies of every nature and description as to which title is vested in the State of Louisiana, together with all islands arising therein and other lands formed by accretion or by reliction, where allowed by law, excepting tax adjudicated lands, and not presently under mineral lease on July 10, 2024, situated in Lafourche Parish, Louisiana, and more particularly described as follows: Beginning at a point having Coordinates of X = 2,334,336.97 and Y = 210,256.59; thence North 87 degrees 11 minutes 02 seconds East 17,919.66 feet to a point having Coordinates of X = 2,352,234.99 and Y = 211,137.04; thence South 02 degrees 48 minutes 59 seconds East 5,828.33 feet to a point having Coordinates of X = 2,352,521.35 and Y = 205,315.75; thence West 2,296.35 feet to a point having Coordinates of X = 2,350,225.00 and Y = 205,315.75; thence South 00 degrees 07 minutes 15 seconds West 3,638.79 feet to a point having Coordinates of X = 2,350,217.32 and Y = 201,676.97; thence South 88 degrees 32 minutes 02 seconds West 15,443.92 feet to a point having Coordinates of X = 2,334,778.46 and Y = 201,281.82; thence North 02 degrees 48 minutes 59 seconds West 8,985.63 feet to the point of beginning, (This tract includes only waterbottoms claimed and owned by the state and specifically excludes any land which the state may claim or own and to which the mineral rights are vested in the state), containing approximately **2,499 acres**, all as more particularly outlined on a plat on file in the Office of Mineral Resources, Department of Natural Resources. All bearings, distances and coordinates are based on Louisiana Coordinate System of 1927, (North or South Zone), where applicable.

NOTE: The above description of the Tract nominated for lease has been provided and corrected, where required, exclusively by the nomination party. Any mineral lease selected from this Tract and awarded by the Louisiana State Mineral and Energy Board shall be without warranty of any kind, either express, implied, or statutory, including, but not limited to, the implied warranties of merchantability and fitness for a particular purpose. Should the mineral lease awarded by the Louisiana State Mineral and Energy Board be subsequently modified, cancelled or abrogated due to the existence of conflicting leases, operating agreements, private claims or other future obligations or conditions which may affect all or any portion of the leased Tract, it shall not relieve the Lessee of the obligation to pay any bonus due thereon to the Louisiana State Mineral and Energy Board, nor shall the Louisiana State Mineral and Energy Board be obligated to refund any consideration paid by the Lessor prior to such modification, cancellation, or abrogation, including, but not limited to, bonuses, rentals and royalties.

NOTE: The State of Louisiana does hereby reserve, and this lease shall be subject to, the imprescriptible right of surface use in the nature of a servitude in favor of the Department of Natural Resources, including its Offices and Commissions, for the sole purpose of implementing, constructing, servicing and maintaining approved coastal zone management and/or restoration projects. Utilization of any and all rights derived under this lease by the mineral lessee, its agents, successors or assigns, shall not

interfere with nor hinder the reasonable surface use by the Department of Natural Resources, its Offices or Commissions, as herein above reserved.

Applicant: GRAY PRODUCTION COMPANY

Bidder	Cash Payment	Price/ Acre	Rental	Oil	Gas	Other



0 2,500 Feet

LAFOURCHE

LITTLE LAKE

T21S - R22E

P.O.B.

PICKETT BAY

TIMBALIER BAY

TRACT 45819 - Terrebonne Parish, Louisiana

All of the lands now or formerly constituting the beds and bottoms of all water bodies of every nature and description as to which title is vested in the State of Louisiana, together with all islands arising therein and other lands formed by accretion or by reliction, where allowed by law, excepting tax adjudicated lands, and not presently under mineral lease on July 10, 2024, situated in Terrebonne Parish, Louisiana, and more particularly described as follows: Beginning at a point having Coordinates of X = 2,197,433.34 and Y = 167,359.09; thence North 89 degrees 40 minutes 01 seconds East 5,971.22 feet to a point having Coordinates of X = 2,203,404.45, Y = 167,393.79; thence South 00 degrees 23 minutes 38 seconds East 12,804.62 feet to a point having Coordinates of X = 2,203,492.47 and Y = 154,589.47, said point being a Northwest corner of State Lease No. 188, as amended; thence South 00 degrees 20 minutes 05 seconds East 5,280.00 feet along the Western boundary of said State Lease No. 188, as amended, to a point being its Southwest corner having Coordinates of X = 2,203,523.32 and Y = 149,309.56; thence North 89 degrees 27 minutes 27 seconds West 6,004.88 feet to a point having Coordinates of X = 2,197,518.71, Y = 149,366.41; thence North 00 degrees 16 minutes 19 seconds West 17,992.88 feet to the point of beginning, containing approximately **2,451 acres**, all as more particularly outlined on a plat on file in the Office of Mineral Resources, Department of Natural Resources. All bearings, distances and coordinates are based on Louisiana Coordinate System of 1927, (North or South Zone), where applicable.

NOTE: The above description of the Tract nominated for lease has been provided and corrected, where required, exclusively by the nomination party. Any mineral lease selected from this Tract and awarded by the Louisiana State Mineral and Energy Board shall be without warranty of any kind, either express, implied, or statutory, including, but not limited to, the implied warranties of merchantability and fitness for a particular purpose. Should the mineral lease awarded by the Louisiana State Mineral and Energy Board be subsequently modified, cancelled or abrogated due to the existence of conflicting leases, operating agreements, private claims or other future obligations or conditions which may affect all or any portion of the leased Tract, it shall not relieve the Lessee of the obligation to pay any bonus due thereon to the Louisiana State Mineral and Energy Board, nor shall the Louisiana State Mineral and Energy Board be obligated to refund any consideration paid by the Lessor prior to such modification, cancellation, or abrogation, including, but not limited to, bonuses, rentals and royalties.

NOTE: The State of Louisiana does hereby reserve, and this lease shall be subject to, the imprescriptible right of surface use in the nature of a servitude in favor of the Department of Natural Resources, including its Offices and Commissions, for the sole purpose of implementing, constructing, servicing and maintaining approved coastal zone management and/or restoration projects. Utilization of any and all rights derived under this lease by the mineral lessee, its agents, successors or assigns, shall not interfere with nor hinder the reasonable surface use by the Department of Natural Resources, its Offices or Commissions, as herein above reserved.

Applicant: MAGELLAN ENERGY, LLC

Bidder	Cash Payment	Price/ Acre	Rental	Oil	Gas	Other

Legend

24070015

Active_Leases

TERREBONNE

T22S - R17E

BAY BLANC

P.O.B.

LAKE PELTO

SL 188

0 2,500 Feet



TRACT 45820 - Terrebonne Parish, Louisiana

All of the lands now or formerly constituting the beds and bottoms of all water bodies of every nature and description as to which title is vested in the State of Louisiana, together with all islands arising therein and other lands formed by accretion or by reliction, where allowed by law, excepting tax adjudicated lands, and not presently under mineral lease on July 10, 2024, situated in Terrebonne Parish, Louisiana, and more particularly described as follows: Beginning at a point having Coordinates of X = 2,203,394.84 and Y = 168,792.53; thence South 89 degrees 40 minutes 00 seconds East 9,097.34 feet to a point having Coordinates of X = 2,212,492.03 and Y = 168,845.44; thence South 00 degrees 26 minutes 43 seconds East 8,923.18 feet to a point having Coordinates of X = 2,212,561.38 and Y = 159,922.53, said point being on the Northern Boundary of Operating Agreement A0393; thence along the boundary of said Operating Agreement A0393 the following: South 89 degrees 39 minutes 55 seconds West 3,819.92 feet to a point being its Northwest corner having Coordinates of X = 2,208,741.53 and Y = 159,900.12 and South 00 degrees 20 minutes 05 seconds East 309.30 feet along the Western Boundary of Operating Agreement A0393 to a point having Coordinates of X = 2,208,743.34 and Y = 159,590.93, said point also being on the boundary of State Lease No. 188, as amended; thence along the boundary of said State Lease No. 188, as amended, the following: South 00 degrees 20 minutes 05 seconds East 4,970.70 feet to a point having Coordinates of X = 2,208,772.38 and Y = 154,620.31, South 89 degrees 39 minutes 55 seconds West 2,536.90 feet to a point having Coordinates of X = 2,206,235.52 and Y = 154,605.49, and South 89 degrees 39 minutes 55 seconds West 2,743.10 feet to a point being its Southwest corner having Coordinates of X = 2,203,492.47, Y = 154,589.47; thence North 00 degrees 23 minutes 38 seconds West 14,203.40 feet to the point of beginning, containing approximately **2,496 acres**, all as more particularly outlined on a plat on file in the Office of Mineral Resources, Department of Natural Resources. All bearings, distances and coordinates are based on Louisiana Coordinate System of 1927, (North or South Zone), where applicable.

NOTE: The above description of the Tract nominated for lease has been provided and corrected, where required, exclusively by the nomination party. Any mineral lease selected from this Tract and awarded by the Louisiana State Mineral and Energy Board shall be without warranty of any kind, either express, implied, or statutory, including, but not limited to, the implied warranties of merchantability and fitness for a particular purpose. Should the mineral lease awarded by the Louisiana State Mineral and Energy Board be subsequently modified, cancelled or abrogated due to the existence of conflicting leases, operating agreements, private claims or other future obligations or conditions which may affect all or any portion of the leased Tract, it shall not relieve the Lessee of the obligation to pay any bonus due thereon to the Louisiana State Mineral and Energy Board, nor shall the Louisiana State Mineral and Energy Board be obligated to refund any consideration paid by the Lessor prior to such modification, cancellation, or abrogation, including, but not limited to, bonuses, rentals and royalties.

NOTE: The State of Louisiana does hereby reserve, and this lease shall be subject to, the imprescriptible right of surface use in the nature of a servitude in favor of the Department of Natural Resources, including its Offices and Commissions, for the sole purpose of implementing, constructing, servicing and maintaining approved coastal zone management and/or restoration projects. Utilization of any and all rights derived under this lease by the mineral lessee, its agents, successors or assigns, shall not interfere with nor hinder the reasonable surface use by the Department of Natural Resources, its Offices or Commissions, as herein above reserved.

Applicant: MAGELLAN ENERGY, LLC

Bidder	Cash Payment	Price/ Acre	Rental	Oil	Gas	Other

Legend

24070014

Active_Leases

0 2,500 Feet



TERREBONNE

T22S - R18E

T22S - R17E

P.O.B.

BAY BLANC

MISSISSIPPI RIVER

LAKE PELTO

A0393

SL 188