

#### **TRACT 45840 - Webster Parish, Louisiana**

All of the lands now or formerly constituting the beds and bottoms of all water bodies of every nature and description as to which title is vested in the State of Louisiana, together with all islands arising therein and other lands formed by accretion or by reliction, where allowed by law, excepting tax adjudicated lands, and not presently under mineral lease on September 11, 2024, situated in Webster Parish, Louisiana, and more particularly described as follows: Beginning at a point being the Northeast Corner of State Lease No. 19542, as amended, having Coordinates of X = 1,725,518.13 and Y = 645,970.86, said point also being the Southeast corner of State Lease No. 21978; thence North 00 degrees 04 minutes 26 seconds West 5,219.14 feet along the boundary of said State Lease No. 21978 to a point being its Northeast corner having Coordinates of X = 1,725,511.40 and Y = 651,190.00; thence North 00 degrees 04 minutes 26 seconds West 5,310.89 feet to a point having Coordinates of X = 1,725,504.55 and Y = 656,500.90; thence East 15,724.05 feet to a point having Coordinates of X = 1,741,228.60 and Y = 656,500.90; thence South 00 degrees 23 minutes 24 seconds West 10,825.78 feet to a point being the Northeast corner of State Lease No. 21901, having Coordinates of X = 1,741,154.94 and Y = 645,675.37; thence North 89 degrees 01 minutes 55 seconds West 5,441.86 feet along the North line of State Lease No. 21901, to a point being the Northwest corner of State Lease No. 21901, also being the Northeast corner of State Lease No. 21962, having Coordinates of X = 1,735,713.86 feet and Y = 645,767.31; thence North 88 degrees 14 minutes 59 seconds West 5,036.34 feet along the North line of State Lease No. 21962 to a point being the Northwest corner of State Lease No. 21962, having Coordinates of X = 1,730,679.86 and Y = 645,921.14; thence North 89 degrees 26 minutes 53 seconds West 5,161.97 feet to the point of beginning, (This tract includes only waterbottoms claimed and owned by the state and specifically excludes any land which the state may claim or own and to which the mineral rights are vested in the state), containing approximately **1,251 acres**, all as more particularly outlined on a plat on file in the Office of Mineral Resources, Department of Natural Resources. All bearings, distances and coordinates are based on Louisiana Coordinate System of 1927, (North or South Zone), where applicable.

NOTE: The above description of the Tract nominated for lease has been provided and corrected, where required, exclusively by the nomination party. Any mineral lease selected from this Tract and awarded by the Louisiana State Mineral and Energy Board shall be without warranty of any kind, either express, implied, or statutory, including, but not limited to, the implied warranties of merchantability and fitness for a particular purpose. Should the mineral lease awarded by the Louisiana State Mineral and Energy Board be subsequently modified, cancelled or abrogated due to the existence of conflicting leases, operating agreements, private claims or other future obligations or conditions which may affect all or any portion of the leased Tract, it shall not relieve the Lessee of the obligation to pay any bonus due thereon to the Louisiana State Mineral and Energy Board, nor shall the Louisiana State Mineral and Energy Board be obligated to refund any

consideration paid by the Lessor prior to such modification, cancellation, or abrogation, including, but not limited to, bonuses, rentals and royalties.

NOTE: Bidders are hereby advised that certain areas in Lake Bistineau are the subject of dual claims to mineral ownership or mineral rights to certain accreted lands by the federal government and, therefore, title to such accreted lands is in dispute. Any bids accepted by the state mineral board which result in a state mineral lease being given places the successful bidder on notice that the State's title to that acreage, whether the whole or a part of the lease awarded, may be challenged. Accordingly, all leases awarded by the state mineral board are without warranty of any kind, either express, implied, or statutory, including, but not limited to merchantability and fitness for a particular purpose. Should the awarded lease be subsequently modified, cancelled, or abrogated in any way as a result of the above mentioned or any other challenge, or conflicting private claims which affect or may affect all or any portion of the leased tract, the successful bidder/Lessee, their successors, or assigns shall not be relieved of the obligation to pay any monies due prior to the modification, cancellation, or abrogation, including, but not limited to, bonus, rental and royalty, nor shall the State be obligated to refund those monies paid.

Applicant: MCGINTY-DURHAM, INC.

Bidder	Cash Payment	Price/ Acre	Rental	Oil	Gas	Other



**Legend**

24090013



Active Leases



LAKE  
BISTINEAU

T17N - R9W

WEBSTER

T17N - R10W

SL 21901

SL 21962

SL 21978

P.O.B.

SL 19542

0 1,000 2,000 4,000 Feet





**TRACT 45841 - Bienville Bossier and Webster Parishes, Louisiana**

All of the lands now or formerly constituting the beds and bottoms of all water bodies of every nature and description as to which title is vested in the State of Louisiana, together with all islands arising therein and other lands formed by accretion or by reliction, where allowed by law, excepting tax adjudicated lands, and not presently under mineral lease on September 11, 2024, situated in Bienville Bossier and Webster Parishes, Louisiana, and more particularly described as follows: Beginning at a point on the East boundary of State Lease No. 19542, as amended having Coordinates of X = 1,725,506.71 and Y = 643,364.02; thence East 5,112.39 feet to a point on the West boundary of State Lease No. 21962 having Coordinates of X = 1,730,619.09 and Y = 643,364.02; thence along the boundaries of said State Lease No. 21962 the following courses: South 01 degrees 21 minutes 41 seconds West 2,773.69 feet to a point having Coordinates of X = 1,730,553.19 and Y = 640,591.11 and South 00 degrees 27 minutes 40 seconds West 5,345.17 feet to its Southwest corner having Coordinates of X = 1,730,510.17 and Y = 635,246.11, also being a point on the North boundary of State Lease No. 21997, as amended; thence along the boundaries of said State Lease No. 21997 the following courses: North 89 degrees 03 minutes 22 seconds West approximately 5,334 feet to a point and South 00 degrees 21 minutes 11 seconds West approximately 5,423 feet to its Southwest corner and a point on the North boundary of State Lease No. 21979 having Coordinates of X = 1,725,143.18 and Y = 629,910.84; thence North 89 degrees 44 minutes 58 seconds West 5,361.79 feet along the North boundary of said State Lease No. 21979 to the Southeast corner of State Lease No. 18181 having Coordinates of X = 1,719,781.27 and Y = 629,934.28; thence along boundaries of said State Lease No. 18181 the following courses: North 06 degrees 47 minutes 36 seconds East 3,403.33 feet to a point having Coordinates of X = 1,720,183.85 and Y = 633,313.72, North 00 degrees 17 minutes 43 seconds East 2,092.48 feet to a point having Coordinates of X = 1,720,194.63 and Y = 635,406.17 and North 89 degrees 27 minutes 06 seconds West 1,590.68 feet to a point of intersection with the South boundary of State Lease No. 16531 having Coordinates of X = 1,718,604.02 and Y = 635,421.39; thence along the South and East boundaries of said State Lease No. 16531 the following courses: South 89 degrees 41 minutes 11 seconds East 1,508.58 feet to a point having Coordinates of X = 1,720,112.58 and Y = 635,413.13, South 89 degrees 41 minutes 10 seconds East 387.43 feet to a point having Coordinates of X = 1,720,500.00 and Y = 635,411.01, North 4,588.99 feet to a point having Coordinates of X = 1,720,500.00 and Y = 640,000.00 and North 00 degrees 00 minutes 01 seconds East 687.54 feet to the South boundary of said State Lease No. 19542 having Coordinates of X = 1,720,500.00 and Y = 640,687.54; thence along the South and East boundaries of said State Lease No. 19542 the following courses: North 89 degrees 57 minutes 41 seconds East 4,994.99 feet to a point having Coordinates of X = 1,725,494.99 and Y = 640,690.91 and North 00 degrees 15 minutes 04 seconds East 2,673.14 feet to the point of beginning, (This tract includes only waterbottoms claimed and owned by the state and specifically excludes any land which the state may claim or own and to which the mineral rights are vested in the state), containing approximately **372 acres**, all as more particularly outlined on a plat on file in the Office of Mineral Resources,

Department of Natural Resources. All bearings, distances and coordinates are based on Louisiana Coordinate System of 1927, (North or South Zone), where applicable.

NOTE: The above description of the Tract nominated for lease has been provided and corrected, where required, exclusively by the nomination party. Any mineral lease selected from this Tract and awarded by the Louisiana State Mineral and Energy Board shall be without warranty of any kind, either express, implied, or statutory, including, but not limited to, the implied warranties of merchantability and fitness for a particular purpose. Should the mineral lease awarded by the Louisiana State Mineral and Energy Board be subsequently modified, cancelled or abrogated due to the existence of conflicting leases, operating agreements, private claims or other future obligations or conditions which may affect all or any portion of the leased Tract, it shall not relieve the Lessee of the obligation to pay any bonus due thereon to the Louisiana State Mineral and Energy Board, nor shall the Louisiana State Mineral and Energy Board be obligated to refund any consideration paid by the Lessor prior to such modification, cancellation, or abrogation, including, but not limited to, bonuses, rentals and royalties.

NOTE: This tract encompasses an area beneath which is located on the Bistineau Gas Storage Pool in the Sligo formation of the Pettet Porosity. Accordingly, any mineral related activity, including, but not limited to, the exploration and drilling for, and the production and storage of oil, gas and other liquid or gaseous minerals, conducted under a valid mineral lease which may be obtained from the State, shall be subject to any statewide orders issued by the Louisiana Office of Conservation pertinent to conducting such operations in this area and upon this tract, including particularly, but not limited to, the following: Order Nos. 287, 287-A, 287-A-1, 287-B, Supplement to 287-B, 287-B-1, 287-B-2, 287-B-3, and 287-B-4. The successful bidder on this tract shall contact the operator of the Bistineau Gas Storage Pool and the Office of Conservation prior to initiating and conducting any of the aforementioned activity hereon.

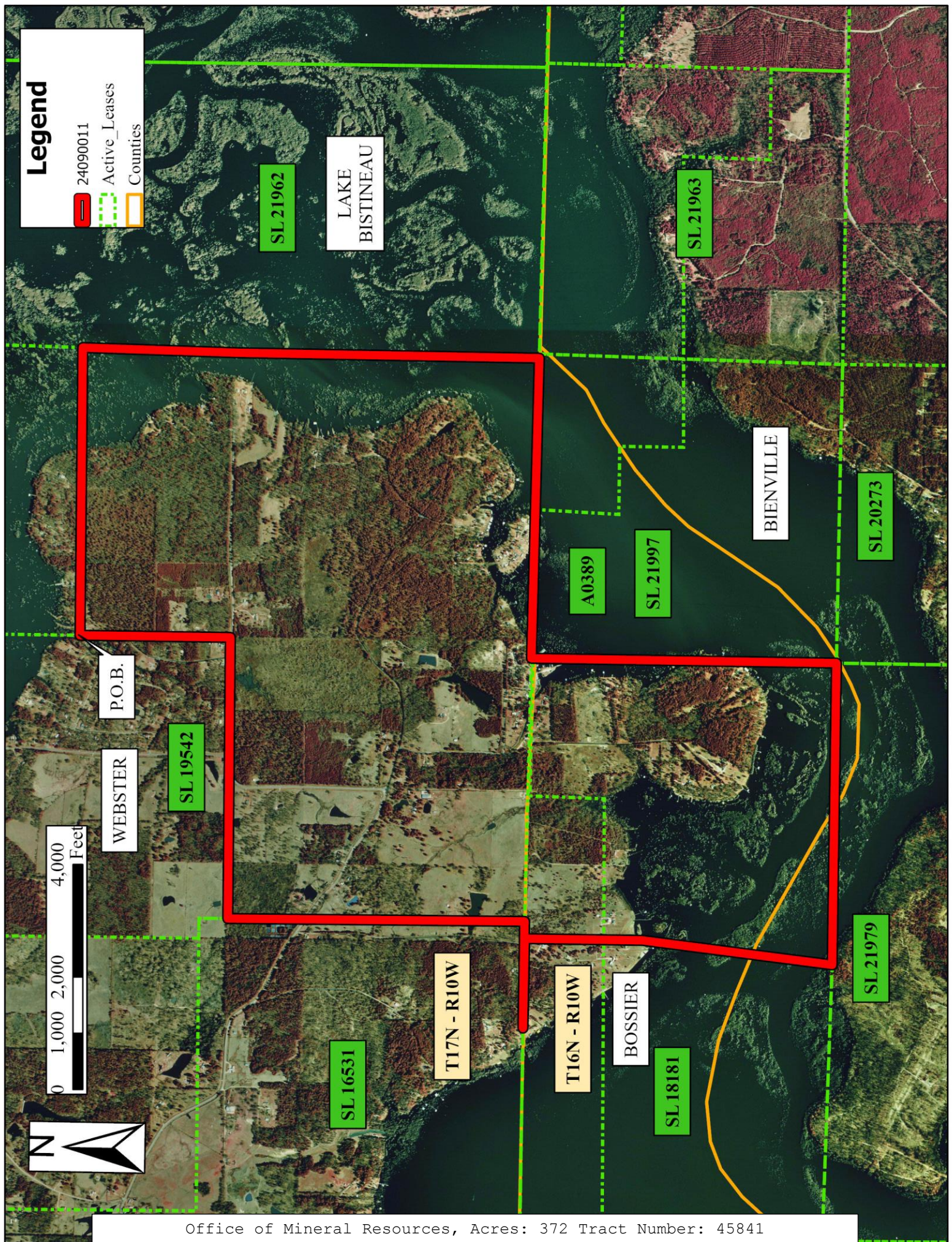
NOTE: Bidders are hereby advised that certain areas in Lake Bistineau are the subject of dual claims to mineral ownership or mineral rights to certain accreted lands by the federal government and, therefore, title to such accreted lands is in dispute. Any bids accepted by the state mineral board which result in a state mineral lease being given places the successful bidder on notice that the State's title to that acreage, whether the whole or a part of the lease awarded, may be challenged. Accordingly, all leases awarded by the state mineral board are without warranty of any kind, either express, implied, or statutory, including, but not limited to merchantability and fitness for a particular purpose. Should the awarded lease be subsequently modified, cancelled, or abrogated in any way as a result of the above mentioned or any other challenge, or conflicting private claims which affect or may affect all or any portion of the leased tract, the successful bidder/Lessee, their successors, or assigns shall not be relieved of the obligation to pay any monies due prior to the modification, cancellation, or

abrogation, including, but not limited to, bonus, rental and royalty, nor shall the State be obligated to refund those monies paid.

Applicant: MARK A. O'NEAL & ASSOCIATES, INC.

Bidder	Cash Payment	Price/ Acre	Rental	Oil	Gas	Other





Office of Mineral Resources, Acres: 372 Tract Number: 45841



**TRACT 45842 - De Soto and Natchitoches Parishes, Louisiana**

All of the lands now or formerly constituting the beds and bottoms of all water bodies of every nature and description as to which title is vested in the State of Louisiana, together with all islands arising therein and other lands formed by accretion or by reliction, where allowed by law, excepting tax adjudicated lands, and not presently under mineral lease on September 11, 2024, situated in De Soto and Natchitoches Parishes, Louisiana, and more particularly described as follows: Beginning at the Southeast corner of State Lease No. 20159, also being the Southwest corner of the retained Area B of State Lease No. 20721, as amended, having Coordinates of X = 1,708,190.00 and Y = 461,670.00; thence along the South boundary of said State Lease No. 20721, as amended, East 5,193.13 feet to a point having Coordinates of X = 1,713,383.13 and Y = 461,670.00, a point on the West boundary of State Lease No. 22171; thence South 01 degrees 04 minutes 08 seconds East 5,449.97 feet along the West boundary of said State Lease No. 22171 to the Northeast corner of State Lease No. 22170 having Coordinates of X = 1,713,484.79 and Y = 456,220.97; thence North 88 degrees 32 minutes 36 seconds West 5,277.22 feet along the North boundary of said State Lease No. 22170 to the Northeast corner of State Lease No. 21781 having Coordinates of X = 1,708,209.27 and Y = 456,355.14; thence North 00 degrees 12 minutes 28 seconds West 5,314.90 feet to the point of beginning, containing approximately **12 acres**, all as more particularly outlined on a plat on file in the Office of Mineral Resources, Department of Natural Resources. All bearings, distances and coordinates are based on Louisiana Coordinate System of 1927, (North or South Zone), where applicable.

NOTE: The above description of the Tract nominated for lease has been provided and corrected, where required, exclusively by the nomination party. Any mineral lease selected from this Tract and awarded by the Louisiana State Mineral and Energy Board shall be without warranty of any kind, either express, implied, or statutory, including, but not limited to, the implied warranties of merchantability and fitness for a particular purpose. Should the mineral lease awarded by the Louisiana State Mineral and Energy Board be subsequently modified, cancelled or abrogated due to the existence of conflicting leases, operating agreements, private claims or other future obligations or conditions which may affect all or any portion of the leased Tract, it shall not relieve the Lessee of the obligation to pay any bonus due thereon to the Louisiana State Mineral and Energy Board, nor shall the Louisiana State Mineral and Energy Board be obligated to refund any consideration paid by the Lessor prior to such modification, cancellation, or abrogation, including, but not limited to, bonuses, rentals and royalties.



Applicant: MARK A O'NEAL & ASSOCIATES, INC.

Bidder	Cash Payment	Price/ Acre	Rental	Oil	Gas	Other



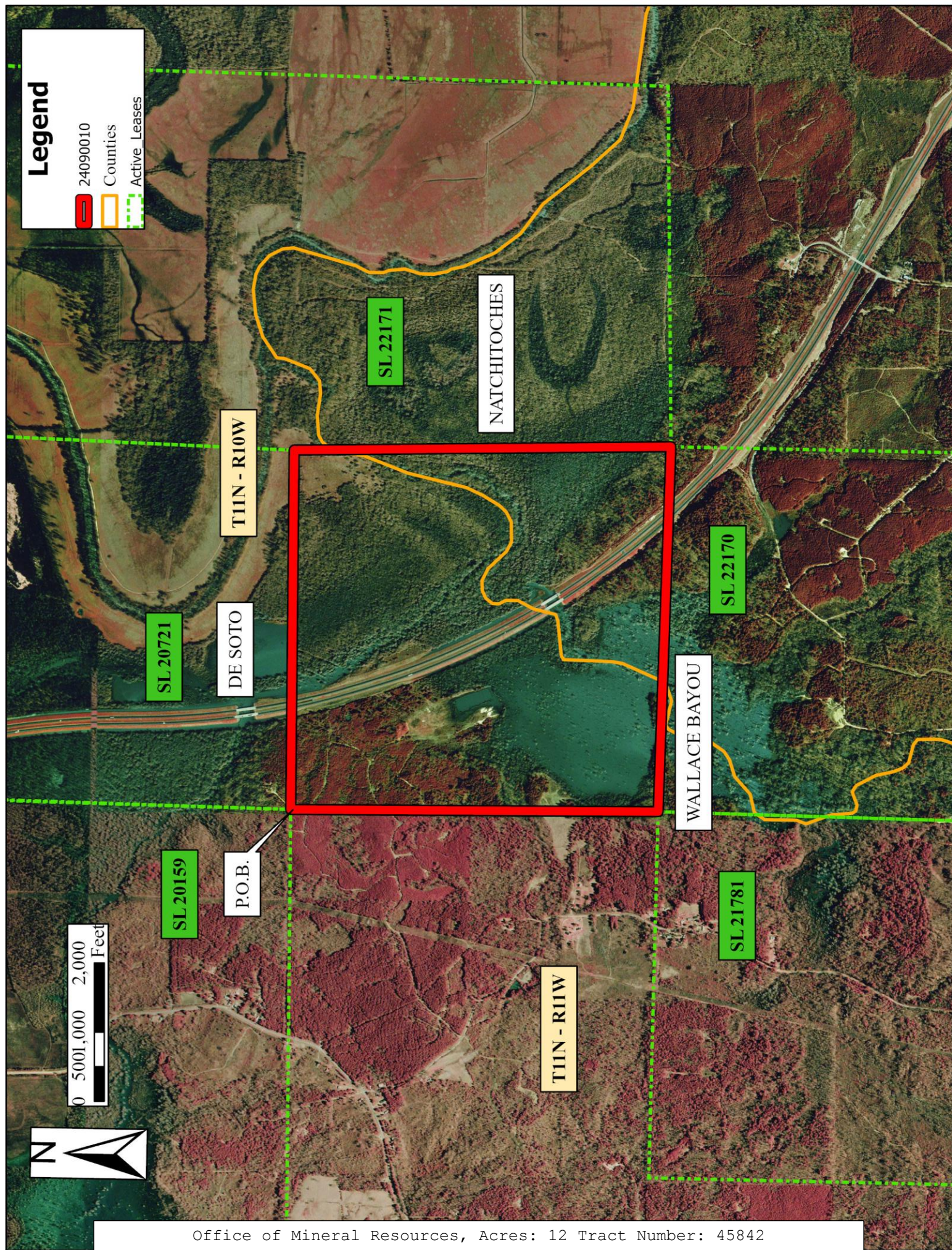
**Legend**

24090010

Countries

Active Leases

0 5001,000 2,000 Feet





**TRACT 45843 - Portion of Blocks 31, and 32, Main Pass Area, Revised, Plaquemines Parish, Louisiana**

All of the lands now or formerly constituting the beds and bottoms of all water bodies of every nature and description as to which title is vested in the State of Louisiana, together with all islands arising therein and other lands formed by accretion or by reliction, where allowed by law, excepting tax adjudicated lands, and not presently under mineral lease on September 11, 2024, situated in Plaquemines Parish, Louisiana, and more particularly described as follows: Beginning at the Northwest corner of Block 31, Main Pass Area, Revised, said point having Coordinates of X = 2,620,600.00 and Y = 307,580.00; thence East 6,170.00 feet along the North line of said Block 31, Main Pass Area, Revised, to a point having Coordinates of X = 2,626,770.00 and Y = 307,580.00; thence South 10,730.00 feet to a point having Coordinates of X = 2,626,770.00 and Y = 296,850.00, said point being the Easternmost Northeast corner of State Lease No. 2125, as amended; thence along the northern boundary of said State Lease No. 2125, as amended, the following courses and distances, to-wit: South 83 degrees 19 minutes 25 seconds West 3,010.42 feet to a point having Coordinates of X = 2,623,780.00 and Y = 296,500.00, South 55 degrees 44 minutes 20 seconds West 3,339.46 feet to a point having Coordinates of X = 2,621,020.00 and Y = 294,620.00, and North 63 degrees 26 minutes 06 seconds West 469.57 feet to a point having Coordinates of X = 2,620,600.00 and Y = 294,830.00, said point being the Westernmost Northwestern corner of said State Lease No. 2125, as amended, said point also being on the West line of said Block 31, Main Pass Area, Revised; thence North 2,450.00 feet along said West line of said Block 31, Main Pass Area, Revised, to a point having Coordinates of X = 2,620.600.00 and Y = 297,280.00, said point also being the Northeast corner of State Lease No. 1958, as amended; thence West 9,236.90 feet along the North line of said State Lease No. 1958, as amended, to a point having Coordinates of X = 2,611,363.10 and Y = 297,280.00; thence North 1,895.83 feet to a point having Coordinates of X = 2,611,363.10 and Y = 299,175.83, said point also being the Southwest corner of State Lease No. 22175; thence along the southern, eastern and northern boundaries of said State Lease No. 22175 the following courses and distances, to-wit: East 8,191.90 feet to a point having Coordinates of X = 2,619,555.00 and Y = 299,175.83, said point being the Southeast corner of said State Lease No. 22175, North 7,350.17 feet to a point having Coordinates of X = 2,619,555.00 and Y = 306,526.00, North 0.50 feet to a point having Coordinates of X = 2,619,555.00 and Y = 306,526.50, said point being the Northeast corner of said State Lease No. 22175, West 1,508.38 feet to a point having Coordinates of X = 2,618,046.62 and Y = 306,526.50, said point being the Northernmost Northwest corner of said State Lease No. 22175, and South 50 degrees 51 minutes 38 seconds West 8,617.05 feet to a point having Coordinates of X = 2,611,363.14 and Y = 301,087.33, said point being the Southernmost Northwest corner of said State Lease No. 22175; thence North 1,450.00 feet to a point having Coordinates of X = 2,611,363.14 and Y = 302,537.33; thence North 50 degrees 51 minutes 38 seconds East 7,988.89 feet to a point having Coordinates of X = 2,617,559.42 and Y = 307,580.00, said point being on the North line of Block 32, Main Pass Area, Revised; thence East 3,040.58 feet along on said North line of

said Block 32, Main Pass Area, Revised, to the point of beginning, containing approximately **2,494.44 acres**, all as more particularly outlined on a plat on file in the Office of Mineral Resources, Department of Natural Resources. All bearings, distances and coordinates are based on Louisiana Coordinate System of 1927, (North or South Zone), where applicable.

NOTE: The above description of the Tract nominated for lease has been provided and corrected, where required, exclusively by the nomination party. Any mineral lease selected from this Tract and awarded by the Louisiana State Mineral and Energy Board shall be without warranty of any kind, either express, implied, or statutory, including, but not limited to, the implied warranties of merchantability and fitness for a particular purpose. Should the mineral lease awarded by the Louisiana State Mineral and Energy Board be subsequently modified, cancelled or abrogated due to the existence of conflicting leases, operating agreements, private claims or other future obligations or conditions which may affect all or any portion of the leased Tract, it shall not relieve the Lessee of the obligation to pay any bonus due thereon to the Louisiana State Mineral and Energy Board, nor shall the Louisiana State Mineral and Energy Board be obligated to refund any consideration paid by the Lessor prior to such modification, cancellation, or abrogation, including, but not limited to, bonuses, rentals and royalties.

NOTE: The State of Louisiana does hereby reserve, and this lease shall be subject to, the imprescriptible right of surface use in the nature of a servitude in favor of the Department of Natural Resources, including its Offices and Commissions, for the sole purpose of implementing, constructing, servicing and maintaining approved coastal zone management and/or restoration projects. Utilization of any and all rights derived under this lease by the mineral lessee, its agents, successors or assigns, shall not interfere with nor hinder the reasonable surface use by the Department of Natural Resources, its Offices or Commissions, as herein above reserved.

NOTE: This tract is located in an area designated by the Louisiana Legislature or the Wildlife and Fisheries Commission as a Public Oyster Seed Ground, Reservation, or area of Calcasieu or Sabine Lake. Proposed projects occurring in these areas will be evaluated on a case by case basis by Louisiana Department of Wildlife & Fisheries. Modifications to proposed project features including, but not limited to, access routes, well sites, flowlines, and appurtenant structures maybe required by the Louisiana Department of Wildlife and Fisheries. In addition, compensatory mitigation will be required to offset unavoidable habitat impacts.

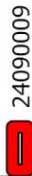


Applicant: ROBERT A. SCHROEDER, INC.

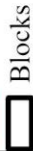
Bidder	Cash Payment	Price/ Acre	Rental	Oil	Gas	Other



**Legend**



24090009



Blocks



Active Leases

PLAQUEMINES

MP00025

MP00026

P.O.B.

GULF OF  
MEXICO

Main Pass  
Area, Revised

MP00031

MP00032

SL 22175

SL 1958

SL 2125



#### **TRACT 45844 - Lafourche Parish, Louisiana**

All of the lands now or formerly constituting the beds and bottoms of all water bodies of every nature and description as to which title is vested in the State of Louisiana, together with all islands arising therein and other lands formed by accretion or by reliction, where allowed by law, excepting tax adjudicated lands, and not presently under mineral lease on September 11, 2024, situated in Lafourche Parish, Louisiana, and more particularly described as follows: Beginning at a point having Coordinates of X = 2,347,677.00 and Y = 212,905.00; thence North 00 degrees 43 minutes 05 seconds East approximately 4,612 feet to a point on the Southern boundary of State Lease No. 1908, as amended; thence along the boundary of said State Lease No. 1908, as amended, the following: Easterly, Northwesterly, and Westerly to a point of intersection with a line having a bearing of South, commencing at a point having Coordinates of X = 2,347,677.00 and Y = 228,323.00; thence North approximately 6,048 feet to a point having Coordinates of X = 2,347,677.00 and Y = 228,323.00; thence East 12,426.00 feet to a point having Coordinates of X = 2,360,103.00 and Y = 228,323.00; thence South 15,418.00 feet to a point having Coordinates of X = 2,360,103.00 and Y = 212,905.00; thence West 12,426.00 feet to the point of beginning, containing approximately **1,188 acres**, all as more particularly outlined on a plat on file in the Office of Mineral Resources, Department of Natural Resources. All bearings, distances and coordinates are based on Louisiana Coordinate System of 1927, (North or South Zone), where applicable.

NOTE: The above description of the Tract nominated for lease has been provided and corrected, where required, exclusively by the nomination party. Any mineral lease selected from this Tract and awarded by the Louisiana State Mineral and Energy Board shall be without warranty of any kind, either express, implied, or statutory, including, but not limited to, the implied warranties of merchantability and fitness for a particular purpose. Should the mineral lease awarded by the Louisiana State Mineral and Energy Board be subsequently modified, cancelled or abrogated due to the existence of conflicting leases, operating agreements, private claims or other future obligations or conditions which may affect all or any portion of the leased Tract, it shall not relieve the Lessee of the obligation to pay any bonus due thereon to the Louisiana State Mineral and Energy Board, nor shall the Louisiana State Mineral and Energy Board be obligated to refund any consideration paid by the Lessor prior to such modification, cancellation, or abrogation, including, but not limited to, bonuses, rentals and royalties.

NOTE: The State of Louisiana does hereby reserve, and this lease shall be subject to, the imprescriptible right of surface use in the nature of a servitude in favor of the Department of Natural Resources, including its Offices and Commissions, for the sole purpose of implementing, constructing, servicing and maintaining approved coastal zone management and/or restoration projects. Utilization of any and all rights derived under this lease by the mineral lessee, its agents, successors or assigns, shall not interfere with nor hinder the reasonable surface use by the Department of Natural Resources, its Offices or Commissions, as herein above reserved.

Applicant: QZ ENERGY, LLC

Bidder	Cash Payment	Price/ Acre	Rental	Oil	Gas	Other



**Legend**

24090002



Active Leases



LAFOURCHE

JUDGMENT AREA

T21S - R22E

BAYOU  
LAFOURCHE

SL 1908

BAYOU  
PIERRE  
ET LEE

P.O.B.

0 1,250 2,500 5,000 Feet





#### **TRACT 45845 - Lafourche Parish, Louisiana**

All of the lands now or formerly constituting the beds and bottoms of all water bodies of every nature and description as to which title is vested in the State of Louisiana, together with all islands arising therein and other lands formed by accretion or by reliction, where allowed by law, excepting tax adjudicated lands, and not presently under mineral lease on September 11, 2024, situated in Lafourche Parish, Louisiana, and more particularly described as follows: Beginning at a point having Coordinates of X = 2,347,677.00 and Y = 212,905.00; thence West 12,426.00 feet to a point having Coordinates of X = 2,335,251.00 and Y = 212,905.00; thence North 15,418.00 feet to a point having Coordinates of X = 2,335,251.00 and Y = 228,323.00; thence East 12,426.00 feet to a point having Coordinates of X = 2,347,677.00 and Y = 228,323.00; thence South approximately 6,048 feet to a point on the Northern boundary of State Lease No. 1908, as amended; thence along the boundary of said State Lease No. 1908, as amended, the following: Westerly, Southeasterly, and Easterly to a point of intersection with a line having a bearing of North 00 degrees 43 minutes 05 seconds East, commencing at a point having Coordinates of X = 2,347,677.00 and Y = 212,905.00; thence South 00 degrees 43 minutes 05 seconds West approximately 4,612 feet to the point of beginning, containing approximately **1,563 acres**, all as more particularly outlined on a plat on file in the Office of Mineral Resources, Department of Natural Resources. All bearings, distances and coordinates are based on Louisiana Coordinate System of 1927, (North or South Zone), where applicable.

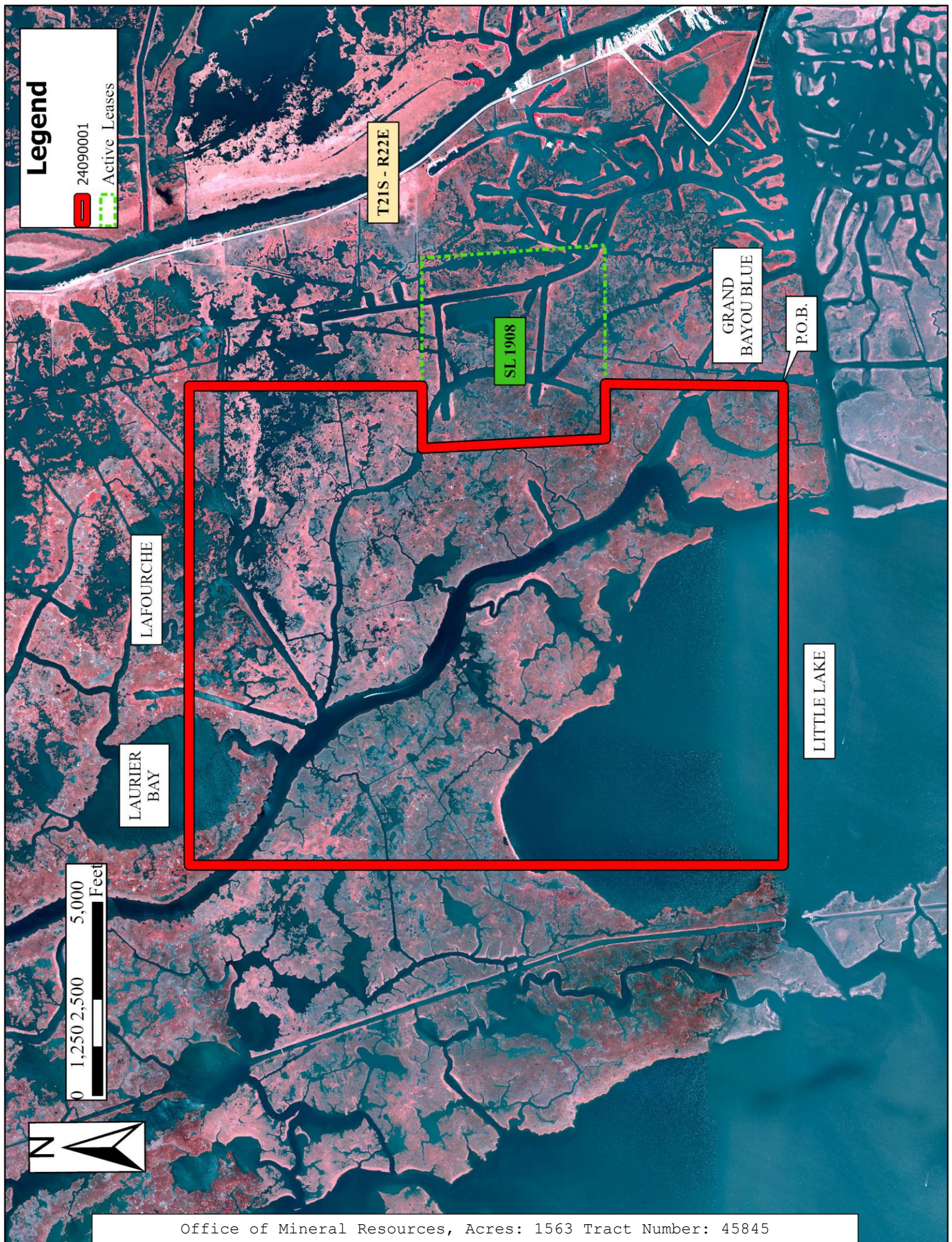
NOTE: The above description of the Tract nominated for lease has been provided and corrected, where required, exclusively by the nomination party. Any mineral lease selected from this Tract and awarded by the Louisiana State Mineral and Energy Board shall be without warranty of any kind, either express, implied, or statutory, including, but not limited to, the implied warranties of merchantability and fitness for a particular purpose. Should the mineral lease awarded by the Louisiana State Mineral and Energy Board be subsequently modified, cancelled or abrogated due to the existence of conflicting leases, operating agreements, private claims or other future obligations or conditions which may affect all or any portion of the leased Tract, it shall not relieve the Lessee of the obligation to pay any bonus due thereon to the Louisiana State Mineral and Energy Board, nor shall the Louisiana State Mineral and Energy Board be obligated to refund any consideration paid by the Lessor prior to such modification, cancellation, or abrogation, including, but not limited to, bonuses, rentals and royalties.

NOTE: The State of Louisiana does hereby reserve, and this lease shall be subject to, the imprescriptible right of surface use in the nature of a servitude in favor of the Department of Natural Resources, including its Offices and Commissions, for the sole purpose of implementing, constructing, servicing and maintaining approved coastal zone management and/or restoration projects. Utilization of any and all rights derived under this lease by the mineral lessee, its agents, successors or assigns, shall not interfere with nor hinder the reasonable surface use by the Department of Natural Resources, its Offices or Commissions, as herein above reserved.

Applicant: QZ ENERGY, LLC

Bidder	Cash Payment	Price/ Acre	Rental	Oil	Gas	Other





**Legend**

24090001

Active Leases

LAURIER  
BAY

LAFOURCHE

T21S - R22E

SL 1908

GRAND  
BAYOU BLUE

P.O.B.

LITTLE LAKE

0 1,250 2,500 5,000 Feet





**TRACT 45846 - Lafourche Parish, Louisiana**

All of the lands now or formerly constituting the beds and bottoms of all water bodies of every nature and description as to which title is vested in the State of Louisiana, together with all islands arising therein and other lands formed by accretion or by reliction, where allowed by law, excepting tax adjudicated lands, and not presently under mineral lease on September 11, 2024, situated in Lafourche Parish, Louisiana, and more particularly described as follows: Beginning at a point having Coordinates of X = 2,347,677.00 and Y = 212,905.00; thence South 7,443.00 feet to a point having Coordinates of X = 2,347,677.00 and Y = 205,462.00; thence West 12,426.00 feet to a point having Coordinates of X = 2,335,251.00 and Y = 205,462.00; thence North 7,443.00 feet to a point having Coordinates of X = 2,335,251.00 and Y = 212,905.00; thence East 12,426.00 feet to the point of beginning, **LESS AND EXCEPT** all that portion of State Lease No. 22221 which lies entirely within the above described tract, being more fully described as follows: Commencing at a point being the point of beginning of the above described nominated tract having coordinates of X = 2,347,677.00 and Y = 212,905.00; thence South 57 degrees 50 minutes 40 seconds West 9,970.48 feet to a point being the point of beginning of said State Lease No. 22221 having Coordinates of X = 2,339,235.93 and Y = 207,598.53; thence North 88 degrees 27 minutes 15 seconds East 5,872.00 feet to a point having Coordinates of X = 2,345,105.79 and Y = 207,756.94; thence South 33 degrees 26 minutes 44 seconds West 2,568.97 feet to a point having Coordinates X = 2,343,689.92 and Y = 205,613.36; thence South 88 degrees 27 minutes 15 seconds West 4,358.00 feet to a point having Coordinates of X = 2,339,333.50 and Y = 205,495.79; thence North 02 degrees 39 minutes 25 seconds West 2,105.00 feet to a point of beginning, (This tract includes only waterbottoms claimed and owned by the state and specifically excludes any land which the state may claim or own and to which the mineral rights are vested in the state). The nominated tract contains approximately **1,553 acres**, all as more particularly outlined on a plat on file in the Office of Mineral Resources, Department of Natural Resources. All bearings, distances and coordinates are based on Louisiana Coordinate System of 1927, (North or South Zone), where applicable.

NOTE: The above description of the Tract nominated for lease has been provided and corrected, where required, exclusively by the nomination party. Any mineral lease selected from this Tract and awarded by the Louisiana State Mineral and Energy Board shall be without warranty of any kind, either express, implied, or statutory, including, but not limited to, the implied warranties of merchantability and fitness for a particular purpose. Should the mineral lease awarded by the Louisiana State Mineral and Energy Board be subsequently modified, cancelled or abrogated due to the existence of conflicting leases, operating agreements, private claims or other future obligations or conditions which may affect all or any portion of the leased Tract, it shall not relieve the Lessee of the obligation to pay any bonus due thereon to the Louisiana State Mineral and Energy Board, nor shall the Louisiana State Mineral and Energy Board be obligated to refund any consideration paid by the Lessor prior to such modification, cancellation, or abrogation, including, but not limited to, bonuses, rentals and royalties.

NOTE: The State of Louisiana does hereby reserve, and this lease shall be subject to, the imprescriptible right of surface use in the nature of a servitude in favor of the Department of Natural Resources, including its Offices and Commissions, for the sole purpose of implementing, constructing, servicing and maintaining approved coastal zone management and/or restoration projects. Utilization of any and all rights derived under this lease by the mineral lessee, its agents, successors or assigns, shall not interfere with nor hinder the reasonable surface use by the Department of Natural Resources, its Offices or Commissions, as herein above reserved.

Applicant: QZ ENERGY, LLC

Bidder	Cash Payment	Price/ Acre	Rental	Oil	Gas	Other





**Legend**

- 24090006
- Active Leases

P.O.B.

LAFOURCHE

LITTLE LAKE

HACKBERRY BAY

SL 22221



**TRACT 45847 - Lafourche Parish, Louisiana**

All of the lands now or formerly constituting the beds and bottoms of all water bodies of every nature and description as to which title is vested in the State of Louisiana, together with all islands arising therein and other lands formed by accretion or by reliction, where allowed by law, excepting tax adjudicated lands, and not presently under mineral lease on September 11, 2024, situated in Lafourche Parish, Louisiana, and more particularly described as follows: Beginning at a point having Coordinates of X = 2,347,677.00 and Y = 212,905.00; thence East 12,426.00 feet to a point having Coordinates of X = 2,360,103.00 and Y = 212,905.00; thence South 14,886.00 feet to a point having Coordinates of X = 2,360,103.00 and Y = 198,019.00; thence West 12,426.00 feet to a point having Coordinates of X = 2,347,677.00 and Y = 198,019.00; thence North 14,886.00 feet to the point of beginning, **LESS AND EXCEPT** all that portion of State Lease No. 22121 which lies entirely within the above described tract, being more fully described as follows: Commencing at a point being the point of beginning of the above described nominated tract having coordinates of X = 2,347,677.00 and Y = 212,905.00; thence South 29 degrees 54 minutes 12 seconds East 11,298.14 feet to a point being the point of beginning of said State Lease No. 22121 having Coordinates of X = 2,353,309.54 and Y = 203,111.00; thence East 3,147.53 feet to a point having Coordinates of X = 2,356,457.07 and Y = 203,111.00; thence South 37 degrees 39 minutes 03 seconds West 6,153.84 feet to a point having Coordinates X = 2,352,698.00 and Y = 198,238.72; thence North 4,113.71 feet to a point having Coordinates of X = 2,352,698.00 and Y = 202,352.43; thence North 38 degrees 52 minutes 29 seconds East 974.37 feet to a point of beginning, (This tract includes only waterbottoms claimed and owned by the state and specifically excludes any land which the state may claim or own and to which the mineral rights are vested in the state). The nominated tract contains approximately **492 acres**, all as more particularly outlined on a plat on file in the Office of Mineral Resources, Department of Natural Resources. All bearings, distances and coordinates are based on Louisiana Coordinate System of 1927, (North or South Zone), where applicable.

NOTE: The above description of the Tract nominated for lease has been provided and corrected, where required, exclusively by the nomination party. Any mineral lease selected from this Tract and awarded by the Louisiana State Mineral and Energy Board shall be without warranty of any kind, either express, implied, or statutory, including, but not limited to, the implied warranties of merchantability and fitness for a particular purpose. Should the mineral lease awarded by the Louisiana State Mineral and Energy Board be subsequently modified, cancelled or abrogated due to the existence of conflicting leases, operating agreements, private claims or other future obligations or conditions which may affect all or any portion of the leased Tract, it shall not relieve the Lessee of the obligation to pay any bonus due thereon to the Louisiana State Mineral and Energy Board, nor shall the Louisiana State Mineral and Energy Board be obligated to refund any consideration paid by the Lessor prior to such modification, cancellation, or abrogation, including, but not limited to, bonuses, rentals and royalties.

NOTE: The State of Louisiana does hereby reserve, and this lease shall be subject to, the imprescriptible right of surface use in the nature of a servitude in favor of the Department of Natural Resources, including its Offices and Commissions, for the sole purpose of implementing, constructing, servicing and maintaining approved coastal zone management and/or restoration projects. Utilization of any and all rights derived under this lease by the mineral lessee, its agents, successors or assigns, shall not interfere with nor hinder the reasonable surface use by the Department of Natural Resources, its Offices or Commissions, as herein above reserved.

Applicant: QZ ENERGY, LLC

Bidder	Cash Payment	Price/ Acre	Rental	Oil	Gas	Other



**Legend**

24090005

Active Leases



LAFOURCHE

T21S - R22E

T22S - R22E

BAYOU MOREAU

BAYOU  
LAFOURCHE

SL 22121

HACKBERRY BAY

P.O.B.

0 1,250 2,500 5,000 Feet





**TRACT 45848 - Lafourche Parish, Louisiana**

All of the lands now or formerly constituting the beds and bottoms of all water bodies of every nature and description as to which title is vested in the State of Louisiana, together with all islands arising therein and other lands formed by accretion or by reliction, where allowed by law, excepting tax adjudicated lands, and not presently under mineral lease on September 11, 2024, situated in Lafourche Parish, Louisiana, and more particularly described as follows: Beginning at a point having Coordinates of X = 2,347,677.00 and Y = 198,019.00; thence West 12,426.00 feet to a point having Coordinates of X = 2,335,251.00 and Y = 198,019.00; thence North 7,443.00 feet to a point having Coordinates of X = 2,335,251.00 and Y = 205,462.00; thence East 12,426.00 feet to a point having Coordinates of X = 2,347,677.00 and Y = 205,462.00; thence South 7,443.00 feet to the point of beginning, (This tract includes only waterbottoms claimed and owned by the state and specifically excludes any land which the state may claim or own and to which the mineral rights are vested in the state), containing approximately **1,537 acres**, all as more particularly outlined on a plat on file in the Office of Mineral Resources, Department of Natural Resources. All bearings, distances and coordinates are based on Louisiana Coordinate System of 1927, (North or South Zone), where applicable.

NOTE: The above description of the Tract nominated for lease has been provided and corrected, where required, exclusively by the nomination party. Any mineral lease selected from this Tract and awarded by the Louisiana State Mineral and Energy Board shall be without warranty of any kind, either express, implied, or statutory, including, but not limited to, the implied warranties of merchantability and fitness for a particular purpose. Should the mineral lease awarded by the Louisiana State Mineral and Energy Board be subsequently modified, cancelled or abrogated due to the existence of conflicting leases, operating agreements, private claims or other future obligations or conditions which may affect all or any portion of the leased Tract, it shall not relieve the Lessee of the obligation to pay any bonus due thereon to the Louisiana State Mineral and Energy Board, nor shall the Louisiana State Mineral and Energy Board be obligated to refund any consideration paid by the Lessor prior to such modification, cancellation, or abrogation, including, but not limited to, bonuses, rentals and royalties.

NOTE: The State of Louisiana does hereby reserve, and this lease shall be subject to, the imprescriptible right of surface use in the nature of a servitude in favor of the Department of Natural Resources, including its Offices and Commissions, for the sole purpose of implementing, constructing, servicing and maintaining approved coastal zone management and/or restoration projects. Utilization of any and all rights derived under this lease by the mineral lessee, its agents, successors or assigns, shall not interfere with nor hinder the reasonable surface use by the Department of Natural Resources, its Offices or Commissions, as herein above reserved.



Applicant: QZ ENERGY, LLC

Bidder	Cash Payment	Price/ Acre	Rental	Oil	Gas	Other



**Legend**

24090007



HACKBERRY BAY

LAFOURCHE

LITTLE LAKE

DEEP BAYOU

TIMBALIER BAY

P.O.B.

