

TRACT 45880 - Portion of Block 119, South Timbalier Area, Revised, Terrebonne Parish, Louisiana

The beds and bottoms of all water bodies belonging to the State of Louisiana located in Block 119, South Timbalier Area, Revised, together with any present lands formed by accretion to the shoreline or islands formed therein, located in Terrebonne Parish, Louisiana, owned by and not presently under mineral lease as of January 8, 2025, from the State of Louisiana, the geographical area of which is more fully described as follows: Beginning at a point on the South line of Block 119, South Timbalier Area, Revised, having Coordinates of X = 2,219,484.95 and Y = 141,553.53; thence North 3,213.45 feet to a point on the Louisiana Coastline, as decreed by the Supreme Court of the United States, as determined by a Special Master appointed therein, in litigation styled *United States v. State of Louisiana et al No. 9 Original*, in 1975, having Coordinates of X = 2,219,484.95 and Y = 144,766.98; thence along said Coastline, the following courses: Northeasterly along a straight line to a point having Coordinates of X = 2,219,935 and Y = 144,971, Northeasterly along a straight line to a point having Coordinates of X = 2,221,937 and Y = 146,004, Northeasterly along a straight line to a point having Coordinates of X = 2,222,957 and Y = 146,695, and Northeasterly along a straight line to a point on the East line of said Block 119 having Coordinates of X = 2,230,771.72 and Y = 148,602.27; thence South 7,048.74 feet along the East line of said Block 119 to its Southeast corner having Coordinates of X = 2,230,771.72 and Y = 141,553.53; thence West 11,286.77 feet along the South line of said Block 119 to the point of beginning, containing approximately **1,420.83 acres**, all as more particularly outlined on a plat on file in the Office of Mineral Resources, Department of Natural Resources. All bearings, distances and coordinates are based on Louisiana Coordinate System of 1927, (North or South Zone).

NOTE: The above description of the Tract nominated for lease has been provided and corrected, where required, exclusively by the nomination party. Any mineral lease selected from this Tract and awarded by the Louisiana State Mineral and Energy Board shall be without warranty of any kind, either express, implied, or statutory, including, but not limited to, the implied warranties of merchantability and fitness for a particular purpose. Should the mineral lease awarded by the Louisiana State Mineral and Energy Board be subsequently modified, cancelled or abrogated due to the existence of conflicting leases, operating agreements, private claims or other future obligations or conditions which may affect all or any portion of the leased Tract, it shall not relieve the Lessee of the obligation to pay any bonus due thereon to the Louisiana State Mineral and Energy Board, nor shall the Louisiana State Mineral and Energy Board be obligated to refund any consideration paid by the Lessor prior to such modification, cancellation, or abrogation, including, but not limited to, bonuses, rentals and royalties.

NOTE: The State of Louisiana does hereby reserve, and this lease shall be subject to, the imprescriptible right of surface use in the nature of a servitude in favor of the Department of Natural Resources, including its Offices and Commissions, for the sole purpose of implementing, constructing,

servicing and maintaining approved coastal zone management and/or restoration projects. Utilization of any and all rights derived under this lease by the mineral lessee, its agents, successors or assigns, shall not interfere with nor hinder the reasonable surface use by the Department of Natural Resources, its Offices or Commissions, as herein above reserved.

Applicant: QZ ENERGY, LLC

Bidder	Cash Payment	Price/ Acre	Rental	Oil	Gas	Other



Legend



ST0119

South Timberlir
Area, Revised

TERREBONNE

LAKE PELTO

GULF OF
MEXICO

ST0120

ST0119

P.O.B.

ST0009

TRACT 45881 - Portion of Blocks 119, and 8, South Timbalier Area, Revised, Terrebonne Parish, Louisiana

The beds and bottoms of all water bodies belonging to the State of Louisiana located in Blocks 119, and 8, South Timbalier Area, Revised, together with any present lands formed by accretion to the shoreline or islands formed therein, located in Terrebonne Parish, Louisiana, owned by and not presently under mineral lease as of January 8, 2025, from the State of Louisiana, the geographical area of which is more fully described as follows: Beginning at a point on the South line of Block 119, South Timbalier Area, Revised, having Coordinates of X = 2,219,484.95 and Y = 141,553.53; thence West 11,286.77 to a point on the Louisiana Coastline, as decreed by the Supreme Court of the United States, as determined by a Special Master appointed therein, in litigation styled *United States v. State of Louisiana et al No. 9 Original*, in 1975, having Coordinates of X = 2,208,198.18 and Y = 141,553.53; thence along said Coastline, the following courses: Northeasterly along a straight line to a point having Coordinates of X = 2,215,009 and Y = 143,380, Northeasterly along a straight line to a point having Coordinates of X = 2,218,146 and Y = 144,160, and Northeasterly along a straight line to a point having Coordinates of X = 2,219,484.95 and Y = 144,766.98; thence South 3,213.45 feet to the point of beginning, containing **391.86 acres**, all as more particularly outlined on a plat on file in the Office of Mineral Resources, Department of Natural Resources. All bearings, distances and coordinates are based on Louisiana Coordinate System of 1927, (North or South Zone).

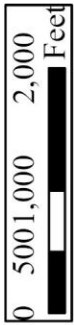
NOTE: The above description of the Tract nominated for lease has been provided and corrected, where required, exclusively by the nomination party. Any mineral lease selected from this Tract and awarded by the Louisiana State Mineral and Energy Board shall be without warranty of any kind, either express, implied, or statutory, including, but not limited to, the implied warranties of merchantability and fitness for a particular purpose. Should the mineral lease awarded by the Louisiana State Mineral and Energy Board be subsequently modified, cancelled or abrogated due to the existence of conflicting leases, operating agreements, private claims or other future obligations or conditions which may affect all or any portion of the leased Tract, it shall not relieve the Lessee of the obligation to pay any bonus due thereon to the Louisiana State Mineral and Energy Board, nor shall the Louisiana State Mineral and Energy Board be obligated to refund any consideration paid by the Lessor prior to such modification, cancellation, or abrogation, including, but not limited to, bonuses, rentals and royalties.

NOTE: The State of Louisiana does hereby reserve, and this lease shall be subject to, the imprescriptible right of surface use in the nature of a servitude in favor of the Department of Natural Resources, including its Offices and Commissions, for the sole purpose of implementing, constructing, servicing and maintaining approved coastal zone management and/or restoration projects. Utilization of any and all rights derived under this lease by the mineral lessee, its agents, successors or assigns, shall not

interfere with nor hinder the reasonable surface use by the Department of Natural Resources, its Offices or Commissions, as herein above reserved.

Applicant: QZ ENERGY, LLC

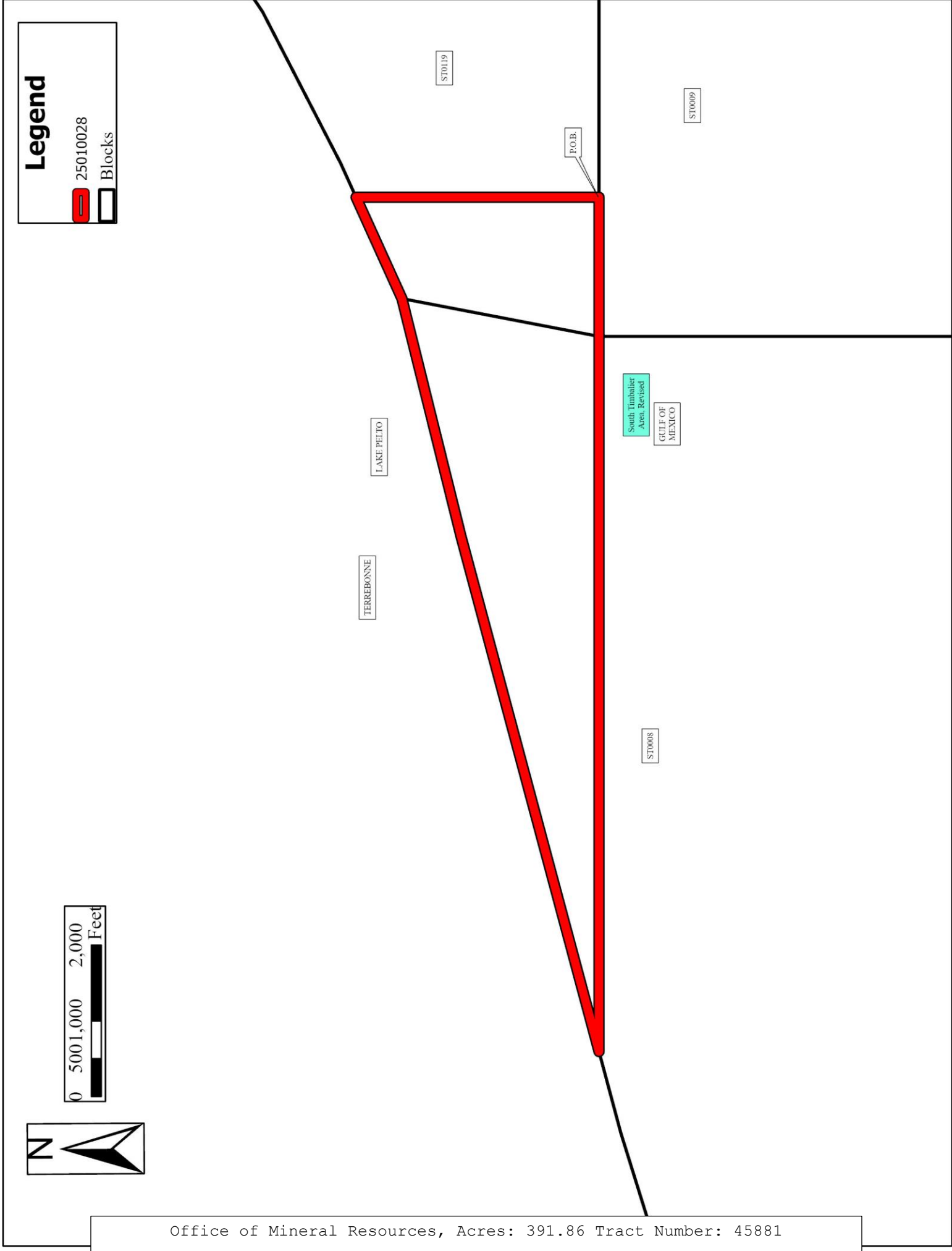
Bidder	Cash Payment	Price/ Acre	Rental	Oil	Gas	Other



Legend

 25010028

 Blocks



TRACT 45882 - Portion of Block 9, South Timbalier Area, Revised, Terrebonne Parish, Louisiana

The beds and bottoms of all water bodies belonging to the State of Louisiana located in Block 9, South Timbalier Area, Revised, together with any present lands formed by accretion to the shoreline or islands formed therein, located in Terrebonne Parish, Louisiana, owned by and not presently under mineral lease as of January 8, 2025, from the State of Louisiana, the geographical area of which is more fully described as follows: Beginning at a point on the North line of Block 9, South Timbalier Area, Revised, having Coordinates of X = 2,225,446.02 and Y = 141,553.53; thence South 13,961.54 feet to a point on the South line of said Block 9 having Coordinates of X = 2,225,446.02 and Y = 127,591.99; thence West 7,800.00 feet along the South line of said Block 9 to its Southwest corner having Coordinates of X = 2,217,646.02 and Y = 127,591.99; thence North 13,961.54 feet along the West line of said Block 9 to its Northwest corner having Coordinates of X = 2,217,646.02 and Y = 141,553.53; thence East 7,800.00 feet along the North line of said Block 9 to the point of beginning, containing **2,500.00 acres**, all as more particularly outlined on a plat on file in the Office of Mineral Resources, Department of Natural Resources. All bearings, distances and coordinates are based on Louisiana Coordinate System of 1927, (North or South Zone).

NOTE: The above description of the Tract nominated for lease has been provided and corrected, where required, exclusively by the nomination party. Any mineral lease selected from this Tract and awarded by the Louisiana State Mineral and Energy Board shall be without warranty of any kind, either express, implied, or statutory, including, but not limited to, the implied warranties of merchantability and fitness for a particular purpose. Should the mineral lease awarded by the Louisiana State Mineral and Energy Board be subsequently modified, cancelled or abrogated due to the existence of conflicting leases, operating agreements, private claims or other future obligations or conditions which may affect all or any portion of the leased Tract, it shall not relieve the Lessee of the obligation to pay any bonus due thereon to the Louisiana State Mineral and Energy Board, nor shall the Louisiana State Mineral and Energy Board be obligated to refund any consideration paid by the Lessor prior to such modification, cancellation, or abrogation, including, but not limited to, bonuses, rentals and royalties.

NOTE: The State of Louisiana does hereby reserve, and this lease shall be subject to, the imprescriptible right of surface use in the nature of a servitude in favor of the Department of Natural Resources, including its Offices and Commissions, for the sole purpose of implementing, constructing, servicing and maintaining approved coastal zone management and/or restoration projects. Utilization of any and all rights derived under this lease by the mineral lessee, its agents, successors or assigns, shall not interfere with nor hinder the reasonable surface use by the Department of Natural Resources, its Offices or Commissions, as herein above reserved.

Applicant: QZ ENERGY, LLC

Bidder	Cash Payment	Price/ Acre	Rental	Oil	Gas	Other



Legend

- 25010030
- Blocks
- Counties

South Timbalier
Area, Revised

TERREBONNE

GULF OF
MEXICO

ST0119

P.O.B.

ST0009

ST0008

South
Pelto
Area

PL0003

TRACT 45883 - Portion of Block 9, South Timbalier Area, Revised, Terrebonne Parish, Louisiana

The beds and bottoms of all water bodies belonging to the State of Louisiana located in Block 9, South Timbalier Area, Revised, together with any present lands formed by accretion to the shoreline or islands formed therein, located in Terrebonne Parish, Louisiana, owned by and not presently under mineral lease as of January 8, 2025, from the State of Louisiana, the geographical area of which is more fully described as follows: Beginning at a point on the North line of Block 9, South Timbalier Area, Revised, having Coordinates of X = 2,225,446.02 and Y = 141,553.53; thence East 7,800.00 feet along the North line of said Block 9 to its Northeast corner having Coordinates of X = 2,233,246.02 and Y = 141,553.53; thence South 11,123.56 feet along the East line of said Block 9 to a point on the Three Mile Line, as decreed by the Supreme Court of the United States, as determined by a Special Master appointed therein, in litigation styled *United States v. State of Louisiana et al No. 9 Original*, in 1975, having Coordinates of X = 2,233,246.02 and Y = 130,429.96; thence along said Three Mile Decree line the following courses: Southwesterly along a straight line to a point having Coordinates of X = 2,229,997 and Y = 129,637, Southwesterly along a straight line to a point having Coordinates of X = 2,228,299 and Y = 128,761, Southwesterly along an arc to the right having a radius of 18,240.60 feet and a center of X = 2,219,935 and Y = 144,971 to a point having Coordinates of X = 2,227,466 and Y = 128,358, and Southwesterly along a straight line to a point on the South line of said Block 9 having Coordinates of X = 2,225,776.24 and Y = 127,591.99; thence West 330.22 feet along the South line of said Block 9 to a point having Coordinates of X = 2,225,446.02 and Y = 127,591.99; thence North 13,961.54 feet to the point of beginning, containing approximately **2,221.98 acres, LESS AND EXCEPT** that portion thereof, if any, lying seaward of the line three nautical miles from the coast line of Louisiana, as said three mile line has been decreed by the Supreme Court of the United States, as determined by a Special Master appointed therein, in litigation styled **United States v. State of Louisiana et al No. 9 Original**, in 1975, all as more particularly outlined on a plat in the Office of Mineral Resources, Department of Energy and Natural Resources. All bearings, distances and coordinates are based on the Louisiana Coordinate System of 1927, (South Zone).

NOTE: The above description of the Tract nominated for lease has been provided and corrected, where required, exclusively by the nomination party. Any mineral lease selected from this Tract and awarded by the Louisiana State Mineral and Energy Board shall be without warranty of any kind, either express, implied, or statutory, including, but not limited to, the implied warranties of merchantability and fitness for a particular purpose. Should the mineral lease awarded by the Louisiana State Mineral and Energy Board be subsequently modified, cancelled or abrogated due to the existence of conflicting leases, operating agreements, private claims or other future obligations or conditions which may affect all or any portion of the leased Tract, it shall not relieve the Lessee of the obligation to pay any bonus due thereon to the Louisiana State Mineral and Energy Board, nor shall the

Louisiana State Mineral and Energy Board be obligated to refund any consideration paid by the Lessor prior to such modification, cancellation, or abrogation, including, but not limited to, bonuses, rentals and royalties.

NOTE: The State of Louisiana does hereby reserve, and this lease shall be subject to, the imprescriptible right of surface use in the nature of a servitude in favor of the Department of Natural Resources, including its Offices and Commissions, for the sole purpose of implementing, constructing, servicing and maintaining approved coastal zone management and/or restoration projects. Utilization of any and all rights derived under this lease by the mineral lessee, its agents, successors or assigns, shall not interfere with nor hinder the reasonable surface use by the Department of Natural Resources, its Offices or Commissions, as herein above reserved.

Applicant: QZ ENERGY, LLC

Bidder	Cash Payment	Price/ Acre	Rental	Oil	Gas	Other



Legend

- 25010029
- Blocks
- Counties

South Timbalier
Area, Revised

TERREBONNE

GULF OF
MEXICO

ST0119

P.O.B.

ST0009

South
Pelto Area

PL0003

ST0010

ST0120

TRACT 45884 - Portion of Block 8, South Timbalier Area, Revised, Terrebonne Parish, Louisiana

The beds and bottoms of all water bodies belonging to the State of Louisiana located in Block 8, South Timbalier Area, Revised, together with any present lands formed by accretion to the shoreline or islands formed therein, located in Terrebonne Parish, Louisiana, owned by and not presently under mineral lease as of January 8, 2025, from the State of Louisiana, the geographical area of which is more fully described as follows: Beginning at a point on the South line of Block 8, South Timbalier Area, Revised, having Coordinates of X = 2,209,846.02 and Y = 127,591.99; thence West 7,800.00 feet along the South line of said Block 8 to its Southwest corner having Coordinates of X = 2,202,046.02 and Y = 127,591.99; thence North 12,091.33 feet along the West line of said Block 8 to a point on the Louisiana Coastline, as decreed by the Supreme Court of the United States, as determined by a Special Master appointed therein, in litigation styled *United States v. State of Louisiana et al No. 9 Original*, in 1975, having Coordinates of X = 2,202,046.02 and Y = 139,683.32; thence along said Coastline, the following courses: Northeasterly along a straight line to a point having Coordinates of X = 2,207,126 and Y = 141,266 and Northeasterly along a straight line to a point having Coordinates of X = 2,208,198.18 and Y = 141,553.53; thence East 1,647.84 feet to a point having Coordinates of X = 2,209,846.02 and Y = 141,553.53; thence South 13,961.54 feet to the point of beginning, containing approximately **2,370.64 acres**, all as more particularly outlined on a plat on file in the Office of Mineral Resources, Department of Natural Resources. All bearings, distances and coordinates are based on Louisiana Coordinate System of 1927, (North or South Zone).

NOTE: The above description of the Tract nominated for lease has been provided and corrected, where required, exclusively by the nomination party. Any mineral lease selected from this Tract and awarded by the Louisiana State Mineral and Energy Board shall be without warranty of any kind, either express, implied, or statutory, including, but not limited to, the implied warranties of merchantability and fitness for a particular purpose. Should the mineral lease awarded by the Louisiana State Mineral and Energy Board be subsequently modified, cancelled or abrogated due to the existence of conflicting leases, operating agreements, private claims or other future obligations or conditions which may affect all or any portion of the leased Tract, it shall not relieve the Lessee of the obligation to pay any bonus due thereon to the Louisiana State Mineral and Energy Board, nor shall the Louisiana State Mineral and Energy Board be obligated to refund any consideration paid by the Lessor prior to such modification, cancellation, or abrogation, including, but not limited to, bonuses, rentals and royalties.

NOTE: The State of Louisiana does hereby reserve, and this lease shall be subject to, the imprescriptible right of surface use in the nature of a servitude in favor of the Department of Natural Resources, including its Offices and Commissions, for the sole purpose of implementing, constructing, servicing and maintaining approved coastal zone management and/or restoration projects. Utilization of any and all rights derived under this

lease by the mineral lessee, its agents, successors or assigns, shall not interfere with nor hinder the reasonable surface use by the Department of Natural Resources, its Offices or Commissions, as herein above reserved.

Applicant: QZ ENERGY, LLC

Bidder	Cash Payment	Price/ Acre	Rental	Oil	Gas	Other



Legend



TERREBONNE

South Timbalier
Area, Revised

ST0008

P.O.B.

PL0002

GULF OF
MEXICO

South
Pelto Area

ST0007

PL0001

TRACT 45885 - Portion of Block 8, South Timbalier Area, Revised, Terrebonne Parish, Louisiana

The beds and bottoms of all water bodies belonging to the State of Louisiana located in Block 8, South Timbalier Area, Revised, together with any present lands formed by accretion to the shoreline or islands formed therein, located in Terrebonne Parish, Louisiana, owned by and not presently under mineral lease as of January 8, 2025, from the State of Louisiana, the geographical area of which is more fully described as follows: Beginning at a point on the South line of Block 8, South Timbalier Area, Revised, having Coordinates of X = 2,209,846.02 and Y = 127,591.99; thence North 13,961.54 feet to a point having Coordinates of X = 2,209,846.02 and Y = 141,553.53; thence East 7,800.00 feet to a point on the East line of said Block 8 having Coordinates of X = 2,217,646.02 and Y = 141,553.53; thence South 13,961.54 feet along the East line of said Block 8 to its Southeast corner having Coordinates of X = 2,217,646.02 and Y = 127,591.99; thence West 7,800.00 feet along the South line of said Block 8 to the point of beginning, containing approximately **2,500.00 acres**, all as more particularly outlined on a plat on file in the Office of Mineral Resources, Department of Natural Resources. All bearings, distances and coordinates are based on Louisiana Coordinate System of 1927, (North or South Zone).

NOTE: The above description of the Tract nominated for lease has been provided and corrected, where required, exclusively by the nomination party. Any mineral lease selected from this Tract and awarded by the Louisiana State Mineral and Energy Board shall be without warranty of any kind, either express, implied, or statutory, including, but not limited to, the implied warranties of merchantability and fitness for a particular purpose. Should the mineral lease awarded by the Louisiana State Mineral and Energy Board be subsequently modified, cancelled or abrogated due to the existence of conflicting leases, operating agreements, private claims or other future obligations or conditions which may affect all or any portion of the leased Tract, it shall not relieve the Lessee of the obligation to pay any bonus due thereon to the Louisiana State Mineral and Energy Board, nor shall the Louisiana State Mineral and Energy Board be obligated to refund any consideration paid by the Lessor prior to such modification, cancellation, or abrogation, including, but not limited to, bonuses, rentals and royalties.

NOTE: The State of Louisiana does hereby reserve, and this lease shall be subject to, the imprescriptible right of surface use in the nature of a servitude in favor of the Department of Natural Resources, including its Offices and Commissions, for the sole purpose of implementing, constructing, servicing and maintaining approved coastal zone management and/or restoration projects. Utilization of any and all rights derived under this lease by the mineral lessee, its agents, successors or assigns, shall not interfere with nor hinder the reasonable surface use by the Department of Natural Resources, its Offices or Commissions, as herein above reserved.

Applicant: QZ ENERGY, LLC

Bidder	Cash Payment	Price/ Acre	Rental	Oil	Gas	Other



Legend



TERREBONNE

South Timbalier
Area, Revised

ST0008

GULF OF
MEXICO

ST0009

P.O.B.

South
Pelto/Area

PL0002

TRACT 45886 - Portion of Block 7, South Timbalier Area, Revised, Terrebonne Parish, Louisiana

The beds and bottoms of all water bodies belonging to the State of Louisiana located in Block 7, South Timbalier Area, Revised, together with any present lands formed by accretion to the shoreline or islands formed therein, located in Terrebonne Parish, Louisiana, owned by and not presently under mineral lease as of January 8, 2025, from the State of Louisiana, the geographical area of which is more fully described as follows: Beginning at a point on the South line of Block 7, South Timbalier Area, Revised, having Coordinates of X = 2,194,254.56 and Y = 128,484.76; thence North 8,966.02 feet to a point on the Louisiana Coastline, as decreed by the Supreme Court of the United States, as determined by a Special Master appointed therein, in litigation styled *United States v. State of Louisiana et al No. 9 Original*, in 1975, having Coordinates of X = 2,194,254.56 and Y = 137,450.78; thence along said Coastline, the following courses: Northeasterly along a straight line to a point having Coordinates of X = 2,198,296.00 and Y = 138,515.00 and Northeasterly along a straight line to a point on the East line of said Block 7 having Coordinates of X = 2,202,046.02 and Y = 139,683.32; thence South 11,198.56 feet along the East line of said Block 7 to its Southeast corner having Coordinates of X = 2,202,046.02 and Y = 128,484.76; thence West 7,791.46 feet along the South line of said Block 7 to the point of beginning, containing approximately **1,795.00 acres**, all as more particularly outlined on a plat on file in the Office of Mineral Resources, Department of Natural Resources. All bearings, distances and coordinates are based on Louisiana Coordinate System of 1927, (North or South Zone).

NOTE: The above description of the Tract nominated for lease has been provided and corrected, where required, exclusively by the nomination party. Any mineral lease selected from this Tract and awarded by the Louisiana State Mineral and Energy Board shall be without warranty of any kind, either express, implied, or statutory, including, but not limited to, the implied warranties of merchantability and fitness for a particular purpose. Should the mineral lease awarded by the Louisiana State Mineral and Energy Board be subsequently modified, cancelled or abrogated due to the existence of conflicting leases, operating agreements, private claims or other future obligations or conditions which may affect all or any portion of the leased Tract, it shall not relieve the Lessee of the obligation to pay any bonus due thereon to the Louisiana State Mineral and Energy Board, nor shall the Louisiana State Mineral and Energy Board be obligated to refund any consideration paid by the Lessor prior to such modification, cancellation, or abrogation, including, but not limited to, bonuses, rentals and royalties.

NOTE: The State of Louisiana does hereby reserve, and this lease shall be subject to, the imprescriptible right of surface use in the nature of a servitude in favor of the Department of Natural Resources, including its Offices and Commissions, for the sole purpose of implementing, constructing, servicing and maintaining approved coastal zone management and/or restoration projects. Utilization of any and all rights derived under this lease by the mineral lessee, its agents, successors or assigns, shall not

interfere with nor hinder the reasonable surface use by the Department of Natural Resources, its Offices or Commissions, as herein above reserved.

Applicant: QZ ENERGY, LLC

Bidder	Cash Payment	Price/ Acre	Rental	Oil	Gas	Other



Legend

 25010017

 Blocks

TERREBONNE

ST0008

South Timbalier
Area, Revised

GULF OF
MEXICO

ST0007

P.O.B.

PL0001

South
Pelto Area

TRACT 45887 - Portion of Block 7, South Timbalier Area, Revised, Terrebonne Parish, Louisiana

The beds and bottoms of all water bodies belonging to the State of Louisiana located in Block 7, South Timbalier Area, Revised, together with any present lands formed by accretion to the shoreline or islands formed therein, located in Terrebonne Parish, Louisiana, owned by and not presently under mineral lease as of January 8, 2025, from the State of Louisiana, the geographical area of which is more fully described as follows: Beginning at a point on the South line of Block 7, South Timbalier Area, Revised, having Coordinates of X = 2,194,254.56 and Y = 128,484.76; thence West 7,791.46 feet along the South line of said Block 7 to its Southwest corner having Coordinates of X = 2,186,463.09 and Y = 128,484.76; thence North 00 degrees 17 minutes 30 seconds West 7,475.84 feet along the West line of said Block 7 to a point on the Louisiana Coastline, as decreed by the Supreme Court of the United States, as determined by a Special Master appointed therein, in litigation styled *United States v. State of Louisiana et al No. 9 Original*, in 1975, having Coordinates of X = 2,186,425.06 and Y = 135,960.51; thence along said Coastline, the following courses: Northeasterly along a straight line to a point having Coordinates of X = 2,186,596 and Y = 135,997, Northeasterly along a straight line to a point having Coordinates of X = 2,192,330 and Y = 136,944, and Northeasterly along a straight line to a point having Coordinates of X = 2,194,254.56 and Y = 137,450.78; thence South 8,966.02 feet to the point of beginning, containing approximately **1,462.29 acres**, all as more particularly outlined on a plat on file in the Office of Mineral Resources, Department of Natural Resources. All bearings, distances and coordinates are based on Louisiana Coordinate System of 1927, (North or South Zone).

NOTE: The above description of the Tract nominated for lease has been provided and corrected, where required, exclusively by the nomination party. Any mineral lease selected from this Tract and awarded by the Louisiana State Mineral and Energy Board shall be without warranty of any kind, either express, implied, or statutory, including, but not limited to, the implied warranties of merchantability and fitness for a particular purpose. Should the mineral lease awarded by the Louisiana State Mineral and Energy Board be subsequently modified, cancelled or abrogated due to the existence of conflicting leases, operating agreements, private claims or other future obligations or conditions which may affect all or any portion of the leased Tract, it shall not relieve the Lessee of the obligation to pay any bonus due thereon to the Louisiana State Mineral and Energy Board, nor shall the Louisiana State Mineral and Energy Board be obligated to refund any consideration paid by the Lessor prior to such modification, cancellation, or abrogation, including, but not limited to, bonuses, rentals and royalties.

NOTE: The State of Louisiana does hereby reserve, and this lease shall be subject to, the imprescriptible right of surface use in the nature of a servitude in favor of the Department of Natural Resources, including its Offices and Commissions, for the sole purpose of implementing, constructing, servicing and maintaining approved coastal zone management and/or

restoration projects. Utilization of any and all rights derived under this lease by the mineral lessee, its agents, successors or assigns, shall not interfere with nor hinder the reasonable surface use by the Department of Natural Resources, its Offices or Commissions, as herein above reserved.

Applicant: QZ ENERGY, LLC

Bidder	Cash Payment	Price/ Acre	Rental	Oil	Gas	Other



TERREBONNE

GULF OF MEXICO

Legend



25010018

Blocks



SS0043

Ship Shoal Area

ST0007

South Timbalier Area Revised

P.O.B.

SS0067

South Pelto Area

PL0001

TRACT 45888 - Portion of Block 1, South Pelto Area, Terrebonne Parish, Louisiana

The beds and bottoms of all water bodies belonging to the State of Louisiana located in Block 1, South Pelto Area, together with any present lands formed by accretion to the shoreline or islands formed therein, located in Terrebonne Parish, Louisiana, owned by and not presently under mineral lease as of January 8, 2025, from the State of Louisiana, the geographical area of which is more fully described as follows: Beginning at a point on the North line of Block 1, South Pelto Area having Coordinates of X = 2,194,254.56 and Y = 128,484.76; thence South 9,710.63 feet to a point on the Three Mile Line, as decreed by the Supreme Court of the United States, as determined by a Special Master appointed therein, in litigation styled *United States v. State of Louisiana et al No. 9 Original*, in 1975, having Coordinates of X = 2,194,254.56 and Y = 118,774.13; thence along said Three Mile Decree line the following courses: Southwesterly along a straight line to a point having Coordinates of X = 2,189,988.00 and Y = 118,070.00, Southwesterly along a straight line to a point having Coordinates of X = 2,188,596 and Y = 117,772, and Southwesterly along an arc to the right having a radius of 18,240.60 feet and a center of X = 2,184,788 and Y = 135,611 to a point on the West line of said Block 1 having Coordinates of X = 2,186,519.27 and Y = 117,452.55; thence North 00 degrees 17 minutes 30 seconds West 11,032.35 feet along the West line of said Block 1 to its Northwest corner having Coordinates of X = 2,186,463.09 and Y = 128,484.76; thence East 7,791.46 feet along the North line of said Block 1 to the point of beginning, containing approximately **1,849.62 acres, LESS AND EXCEPT** that portion thereof, if any, lying seaward of the line three nautical miles from the coast line of Louisiana, as said three mile line has been decreed by the Supreme Court of the United States, as determined by a Special Master appointed therein, in litigation styled **United States v. State of Louisiana et al No. 9 Original**, in 1975, all as more particularly outlined on a plat in the Office of Mineral Resources, Department of Energy and Natural Resources. All bearings, distances and coordinates are based on the Louisiana Coordinate System of 1927, (South Zone).

NOTE: The above description of the Tract nominated for lease has been provided and corrected, where required, exclusively by the nomination party. Any mineral lease selected from this Tract and awarded by the Louisiana State Mineral and Energy Board shall be without warranty of any kind, either express, implied, or statutory, including, but not limited to, the implied warranties of merchantability and fitness for a particular purpose. Should the mineral lease awarded by the Louisiana State Mineral and Energy Board be subsequently modified, cancelled or abrogated due to the existence of conflicting leases, operating agreements, private claims or other future obligations or conditions which may affect all or any portion of the leased Tract, it shall not relieve the Lessee of the obligation to pay any bonus due thereon to the Louisiana State Mineral and Energy Board, nor shall the Louisiana State Mineral and Energy Board be obligated to refund any consideration paid by the Lessor prior to such modification, cancellation, or abrogation, including, but not limited to, bonuses, rentals and royalties.

NOTE: The State of Louisiana does hereby reserve, and this lease shall be subject to, the imprescriptible right of surface use in the nature of a servitude in favor of the Department of Natural Resources, including its Offices and Commissions, for the sole purpose of implementing, constructing, servicing and maintaining approved coastal zone management and/or restoration projects. Utilization of any and all rights derived under this lease by the mineral lessee, its agents, successors or assigns, shall not interfere with nor hinder the reasonable surface use by the Department of Natural Resources, its Offices or Commissions, as herein above reserved.

Applicant: QZ ENERGY, LLC

Bidder	Cash Payment	Price/ Acre	Rental	Oil	Gas	Other



Legend

- 25010019
- Blocks
- Counties

TERREBONNE

GULF OF
MEXICO

ST0007

South Timbalier
Area, Revised

P.O.B.

PL0001

South
Peto Area

Ship
Shoal
Area

SS0067

TRACT 45889 - Portion of Block 1, South Pelto Area, Terrebonne Parish, Louisiana

The beds and bottoms of all water bodies belonging to the State of Louisiana located in Block 1, South Pelto Area, together with any present lands formed by accretion to the shoreline or islands formed therein, located in Terrebonne Parish, Louisiana, owned by and not presently under mineral lease as of January 8, 2025, from the State of Louisiana, the geographical area of which is more fully described as follows: Beginning at a point on the North line of Block 1, South Pelto Area, having Coordinates of X = 2,194,254.56 and Y = 128,484.76; thence East 7,791.46 feet along the North line of said Block 1 to its Northeast corner having Coordinates of X = 2,202,046.02 and Y = 128,484.76; thence South 7,844.43 feet along the East line of said Block 1 to a point on the Three Mile Line, as decreed by the Supreme Court of the United States, as determined by a Special Master appointed therein, in litigation styled *United States v. State of Louisiana et al No. 9 Original*, in 1975, having Coordinates of X = 2,202,046.02 and Y = 120,640.33; thence along said Three Mile Decree line the following courses: Southwesterly along a straight line to a point having Coordinates of X = 2,196,975 and Y = 119,305; Southwesterly along an arc to the right having a radius of 18,240.60 feet and a center of X = 2,192,330 and Y = 136,944 to a point having Coordinates of X = 2,195,302 and Y = 118,947; and Southwesterly along a straight line to a point having Coordinates of X = 2,194,254.56 and Y = 118,774.13; thence North 9,710.63 feet to the point of beginning, containing approximately **1,582.32 acres, LESS AND EXCEPT** that portion thereof, if any, lying seaward of the line three nautical miles from the coast line of Louisiana, as said three mile line has been decreed by the Supreme Court of the United States, as determined by a Special Master appointed therein, in litigation styled **United States v. State of Louisiana et al No. 9 Original**, in 1975, all as more particularly outlined on a plat in the Office of Mineral Resources, Department of Energy and Natural Resources. All bearings, distances and coordinates are based on the Louisiana Coordinate System of 1927, (South Zone).

NOTE: The above description of the Tract nominated for lease has been provided and corrected, where required, exclusively by the nomination party. Any mineral lease selected from this Tract and awarded by the Louisiana State Mineral and Energy Board shall be without warranty of any kind, either express, implied, or statutory, including, but not limited to, the implied warranties of merchantability and fitness for a particular purpose. Should the mineral lease awarded by the Louisiana State Mineral and Energy Board be subsequently modified, cancelled or abrogated due to the existence of conflicting leases, operating agreements, private claims or other future obligations or conditions which may affect all or any portion of the leased Tract, it shall not relieve the Lessee of the obligation to pay any bonus due thereon to the Louisiana State Mineral and Energy Board, nor shall the Louisiana State Mineral and Energy Board be obligated to refund any consideration paid by the Lessor prior to such modification, cancellation, or abrogation, including, but not limited to, bonuses, rentals and royalties.

NOTE: The State of Louisiana does hereby reserve, and this lease shall be subject to, the imprescriptible right of surface use in the nature of a servitude in favor of the Department of Natural Resources, including its Offices and Commissions, for the sole purpose of implementing, constructing, servicing and maintaining approved coastal zone management and/or restoration projects. Utilization of any and all rights derived under this lease by the mineral lessee, its agents, successors or assigns, shall not interfere with nor hinder the reasonable surface use by the Department of Natural Resources, its Offices or Commissions, as herein above reserved.

Applicant: QZ ENERGY, LLC

Bidder	Cash Payment	Price/ Acre	Rental	Oil	Gas	Other



Legend

- 25010020
- Blocks
- Counties

TERREBONNE

GULF OF MEXICO

ST0007

P.O.B.

South
Pelto Area

PL0001

South Timbalier
Area, Revised

ST0008

PL0002