

TRACT 45892 - Avoyelles Parish, Louisiana

All of the lands now or formerly constituting the beds and bottoms of all water bodies of every nature and description as to which title is vested in the State of Louisiana, together with all islands arising therein and other lands formed by accretion or by reliction, where allowed by law, excepting tax adjudicated lands, and not presently under mineral lease on January 8, 2025, situated in Avoyelles Parish, Louisiana, and more particularly described as follows: Beginning at a point having Coordinates of X = 1,844,414.61 and Y = 905,356.99; thence South 89 degrees 16 minutes 00 seconds East 2,653.54 feet to a point having Coordinates of X = 1,847,067.93 and Y = 905,323.03; thence South 89 degrees 48 minutes 47 seconds East 5,227.57 feet to a point having Coordinates of X = 1,852,295.46 and Y = 905,305.99; thence South 00 degrees 04 minutes 40 seconds East 5,235.33 feet to a point having Coordinates of X = 1,852,302.55 and Y = 900,070.67; thence South 89 degrees 49 minutes 33 seconds West 5,276.25 feet to a point having Coordinates of X = 1,847,026.33 and Y = 900,054.63; thence North 89 degrees 05 minutes 35 seconds West 2,623.62 feet to a point having Coordinates of X = 1,844,403.05 and Y = 900,096.16; thence North 00 degrees 07 minutes 33 seconds East 5,260.85 feet to the point of beginning, (This nomination is intended to cover only those State owned water bottoms contained within the boundaries of Section 13, Township 2 North Range 6 East and the East half of Section 14, Township 2 North Range 6 East), containing approximately **16.22 acres**, all as more particularly outlined on a plat on file in the Office of Mineral Resources, Department of Natural Resources. All bearings, distances and coordinates are based on Louisiana Coordinate System of 1927, (North or South Zone), where applicable.

NOTE: The above description of the Tract nominated for lease has been provided and corrected, where required, exclusively by the nomination party. Any mineral lease selected from this Tract and awarded by the Louisiana State Mineral and Energy Board shall be without warranty of any kind, either express, implied, or statutory, including, but not limited to, the implied warranties of merchantability and fitness for a particular purpose. Should the mineral lease awarded by the Louisiana State Mineral and Energy Board be subsequently modified, cancelled or abrogated due to the existence of conflicting leases, operating agreements, private claims or other future obligations or conditions which may affect all or any portion of the leased Tract, it shall not relieve the Lessee of the obligation to pay any bonus due thereon to the Louisiana State Mineral and Energy Board, nor shall the Louisiana State Mineral and Energy Board be obligated to refund any consideration paid by the Lessor prior to such modification, cancellation, or abrogation, including, but not limited to, bonuses, rentals and royalties.

Applicant: CYPRESS ENERGY PARTNERS, LLC

Bidder	Cash Payment	Price/ Acre	Rental	Oil	Gas	Other

Legend

25010031



AVOYELLES

T2N - R6E

T2N - R7E

P.O.B.

BAYOU NATCHITOCHES

0 500 1,000 2,000 Feet



TRACT 45893 - Vernon Parish, Louisiana

All of the lands now or formerly constituting the beds and bottoms of all water bodies of every nature and description as to which title is vested in the State of Louisiana, together with all islands arising therein and other lands formed by accretion or by reliction, where allowed by law, excepting tax adjudicated lands, and not presently under mineral lease on January 8, 2025, situated in Vernon Parish, Louisiana, and more particularly described as follows: Beginning at a point having Coordinates of X = 1,680,694.86 and Y = 117,682.41; thence West 18,479.96 feet to a point having Coordinates of X = 1,662,214.90 and Y = 117,682.41; thence North 10,256.18 feet to a point having Coordinates of X = 1,662,214.90 and Y = 127,938.59; thence East 18,479.96 feet to a point having Coordinates of X = 1,680,694.86 and Y = 127,938.59; thence South 10,256.18 feet to the point of beginning, containing approximately **148 acres, LESS AND EXCEPT** that portion thereof, if any, located West of the boundary line between the States of Texas and Louisiana as determined by the report of the Special Master and adjudicated by the Supreme Court of the United States in litigation styled **Texas v. Louisiana, et al No. 36 Original**, or as otherwise approved by said court, all as more particularly outlined on a plat on file in the Office of Mineral Resources, Department of Energy and Natural Resources. All bearings, distances and coordinates are based on Louisiana Coordinate System of 1927, (North or South Zone), where applicable.

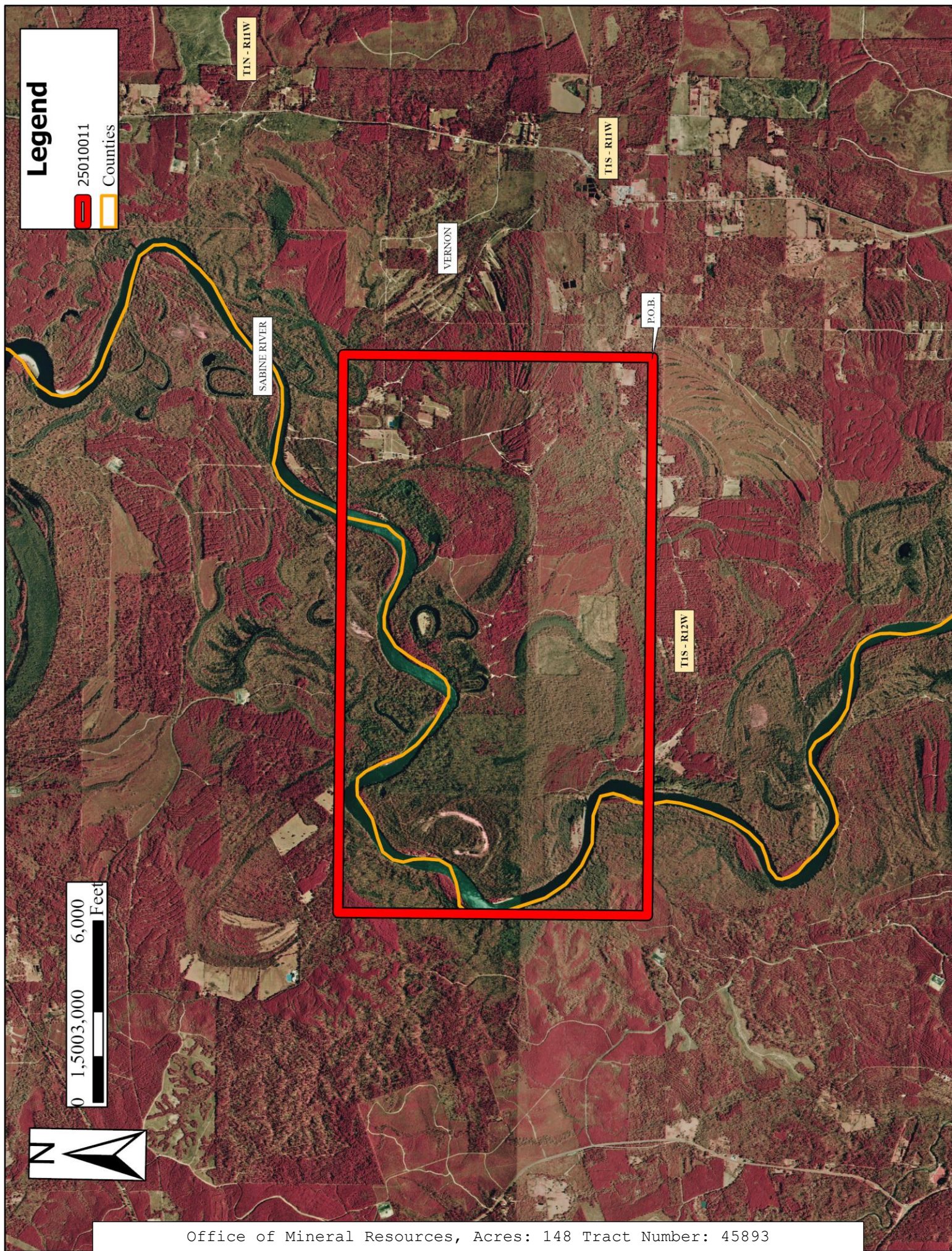
NOTE: The above description of the Tract nominated for lease has been provided and corrected, where required, exclusively by the nomination party. Any mineral lease selected from this Tract and awarded by the Louisiana State Mineral and Energy Board shall be without warranty of any kind, either express, implied, or statutory, including, but not limited to, the implied warranties of merchantability and fitness for a particular purpose. Should the mineral lease awarded by the Louisiana State Mineral and Energy Board be subsequently modified, cancelled or abrogated due to the existence of conflicting leases, operating agreements, private claims or other future obligations or conditions which may affect all or any portion of the leased Tract, it shall not relieve the Lessee of the obligation to pay any bonus due thereon to the Louisiana State Mineral and Energy Board, nor shall the Louisiana State Mineral and Energy Board be obligated to refund any consideration paid by the Lessor prior to such modification, cancellation, or abrogation, including, but not limited to, bonuses, rentals and royalties.

Applicant: FIREBRAND ENERGY

Bidder	Cash Payment	Price/ Acre	Rental	Oil	Gas	Other



Legend



TRACT 45894 - Vernon Parish, Louisiana

All of the lands now or formerly constituting the beds and bottoms of all water bodies of every nature and description as to which title is vested in the State of Louisiana, together with all islands arising therein and other lands formed by accretion or by reliction, where allowed by law, excepting tax adjudicated lands, and not presently under mineral lease on January 8, 2025, situated in Vernon Parish, Louisiana, and more particularly described as follows: Beginning at a point having Coordinates of X = 1,680,694.86 and Y = 117,682.41; thence South 10,917.74 feet to a point having Coordinates of X = 1,680,694.86 and Y = 106,764.67; thence West 18,479.96 feet to a point having Coordinates of X = 1,662,214.90 and Y = 106,764.67; thence North 10,917.74 feet to a point having Coordinates of X = 1,662,214.90 and Y = 117,682.41; thence East 18,479.96 feet to the point of beginning, (This tract includes only waterbottoms claimed and owned by the state and specifically excludes any land which the state or Wildlife and Fisheries may claim or own and to which the mineral rights are vested in them), containing approximately **115 acres, LESS AND EXCEPT** that portion thereof, if any, located West of the boundary line between the States of Texas and Louisiana as determined by the report of the Special Master and adjudicated by the Supreme Court of the United States in litigation styled **Texas v. Louisiana, et al No. 36 Original**, or as otherwise approved by said court, all as more particularly outlined on a plat on file in the Office of Mineral Resources, Department of Energy and Natural Resources. All bearings, distances and coordinates are based on Louisiana Coordinate System of 1927, (North or South Zone), where applicable.

NOTE: The above description of the Tract nominated for lease has been provided and corrected, where required, exclusively by the nomination party. Any mineral lease selected from this Tract and awarded by the Louisiana State Mineral and Energy Board shall be without warranty of any kind, either express, implied, or statutory, including, but not limited to, the implied warranties of merchantability and fitness for a particular purpose. Should the mineral lease awarded by the Louisiana State Mineral and Energy Board be subsequently modified, cancelled or abrogated due to the existence of conflicting leases, operating agreements, private claims or other future obligations or conditions which may affect all or any portion of the leased Tract, it shall not relieve the Lessee of the obligation to pay any bonus due thereon to the Louisiana State Mineral and Energy Board, nor shall the Louisiana State Mineral and Energy Board be obligated to refund any consideration paid by the Lessor prior to such modification, cancellation, or abrogation, including, but not limited to, bonuses, rentals and royalties.

Applicant: FIREBRAND ENERGY

Bidder	Cash Payment	Price/ Acre	Rental	Oil	Gas	Other

Legend

25010010

Counties



TIS - R1W

P.O.B.

VERNON

TIS - R12W

SABINE RIVER

0 1,500 3,000 6,000 Feet



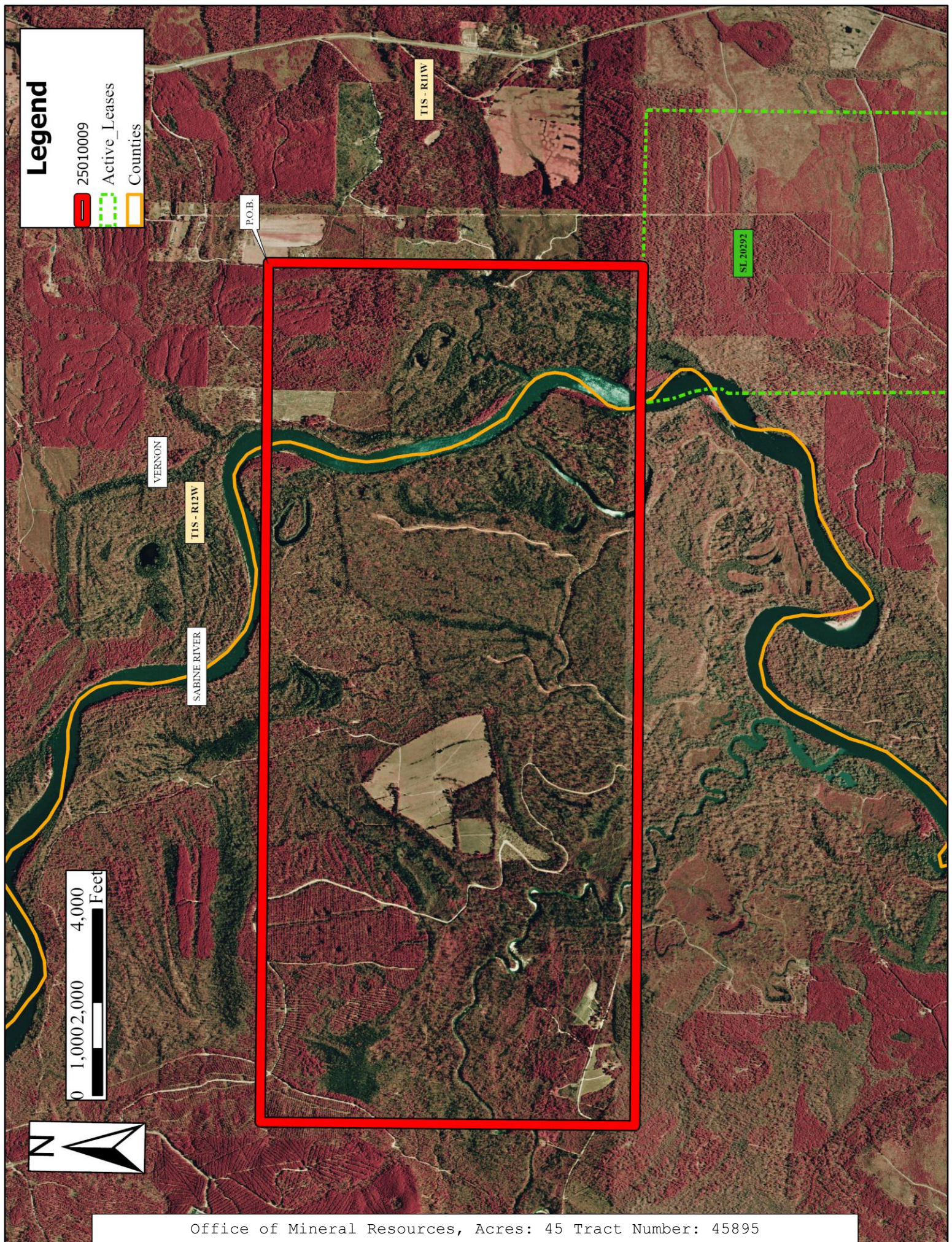
TRACT 45895 - Vernon Parish, Louisiana

All of the lands now or formerly constituting the beds and bottoms of all water bodies of every nature and description as to which title is vested in the State of Louisiana, together with all islands arising therein and other lands formed by accretion or by reliction, where allowed by law, excepting tax adjudicated lands, and not presently under mineral lease on January 8, 2025, situated in Vernon Parish, Louisiana, and more particularly described as follows: Beginning at a point having Coordinates of X = 1,680,694.86 and Y = 106,764.67; thence South 8,064.94 feet to a point having Coordinates of X = 1,680,694.86 and Y = 98,699.73, also being on the Northern boundary of State Lease No. 20292, as amended; thence North 89 degrees 24 minutes 16 seconds West 2,895.59 feet along the Northern boundary of said State Lease No. 20292, as amended, to a point being its Northwest corner having Coordinates of X = 1,677,799.43 and Y = 98,729.83; thence South 89 degrees 53 minutes 22 seconds West 15,584.56 feet to a point having Coordinates of X = 1,662,214.90 and Y = 98,699.75; thence North 8,064.93 feet to a point having Coordinates of X = 1,662,214.90 and Y = 106,764.67; thence East 18,479.96 feet to the point of beginning, containing approximately **45 acres, LESS AND EXCEPT** that portion thereof, if any, located West of the boundary line between the States of Texas and Louisiana as determined by the report of the Special Master and adjudicated by the Supreme Court of the United States in litigation styled **Texas v. Louisiana, et al No. 36 Original**, or as otherwise approved by said court, all as more particularly outlined on a plat on file in the Office of Mineral Resources, Department of Energy and Natural Resources. All bearings, distances and coordinates are based on Louisiana Coordinate System of 1927, (North or South Zone), where applicable.

NOTE: The above description of the Tract nominated for lease has been provided and corrected, where required, exclusively by the nomination party. Any mineral lease selected from this Tract and awarded by the Louisiana State Mineral and Energy Board shall be without warranty of any kind, either express, implied, or statutory, including, but not limited to, the implied warranties of merchantability and fitness for a particular purpose. Should the mineral lease awarded by the Louisiana State Mineral and Energy Board be subsequently modified, cancelled or abrogated due to the existence of conflicting leases, operating agreements, private claims or other future obligations or conditions which may affect all or any portion of the leased Tract, it shall not relieve the Lessee of the obligation to pay any bonus due thereon to the Louisiana State Mineral and Energy Board, nor shall the Louisiana State Mineral and Energy Board be obligated to refund any consideration paid by the Lessor prior to such modification, cancellation, or abrogation, including, but not limited to, bonuses, rentals and royalties.

Applicant: FIREBRAND ENERGY

Bidder	Cash Payment	Price/ Acre	Rental	Oil	Gas	Other



TRACT 45896 - Lafourche Parish, Louisiana

All of the lands now or formerly constituting the beds and bottoms of all water bodies of every nature and description as to which title is vested in the State of Louisiana, together with all islands arising therein and other lands formed by accretion or by reliction, where allowed by law, excepting tax adjudicated lands, and not presently under mineral lease on January 8, 2025, situated in Lafourche Parish, Louisiana, and more particularly described as follows: Beginning at a point having Coordinates of X = 2,266,857.47 and Y = 330,004.01, said point being the Southwest corner of State Lease No. 22220; thence East 10,435.48 feet to a point having Coordinates of X = 2,256,421.99 and Y = 330,004.01; thence North 10,435.48 feet to a point having Coordinates of X = 2,256,421.99 and Y = 340,439.49; thence East 10,435.48 feet to a point being the Northwest corner of said State Lease No. 22220, having Coordinates of X = 2,266,857.47 and Y = 340,439.49; thence South 10,435.48 along the Western boundary of said State Lease No. 22220 to the point of beginning, **LESS AND EXCEPT** any right, title, and interest in lands owned by and not under lease from the State of Louisiana, on behalf of the Lafourche Parish School Board, situated in Section 16, Township 17 South, Range 19 East, Lafourche Parish, Louisiana, contained within the above described tract, containing approximately **44 acres**, all as more particularly outlined on a plat on file in the Office of Mineral Resources, Department of Natural Resources. All bearings, distances and coordinates are based on Louisiana Coordinate System of 1927, (North or South Zone), where applicable.

NOTE: The above description of the Tract nominated for lease has been provided and corrected, where required, exclusively by the nomination party. Any mineral lease selected from this Tract and awarded by the Louisiana State Mineral and Energy Board shall be without warranty of any kind, either express, implied, or statutory, including, but not limited to, the implied warranties of merchantability and fitness for a particular purpose. Should the mineral lease awarded by the Louisiana State Mineral and Energy Board be subsequently modified, cancelled or abrogated due to the existence of conflicting leases, operating agreements, private claims or other future obligations or conditions which may affect all or any portion of the leased Tract, it shall not relieve the Lessee of the obligation to pay any bonus due thereon to the Louisiana State Mineral and Energy Board, nor shall the Louisiana State Mineral and Energy Board be obligated to refund any consideration paid by the Lessor prior to such modification, cancellation, or abrogation, including, but not limited to, bonuses, rentals and royalties.

NOTE: The State of Louisiana does hereby reserve, and this lease shall be subject to, the imprescriptible right of surface use in the nature of a servitude in favor of the Department of Natural Resources, including its Offices and Commissions, for the sole purpose of implementing, constructing, servicing and maintaining approved coastal zone management and/or restoration projects. Utilization of any and all rights derived under this lease by the mineral lessee, its agents, successors or assigns, shall not

interfere with nor hinder the reasonable surface use by the Department of Natural Resources, its Offices or Commissions, as herein above reserved.

Applicant: REEL MAGIC, LLC

Bidder	Cash Payment	Price/ Acre	Rental	Oil	Gas	Other



Legend

25010002



Active Leases



LAFOURCHE

BAYOU
L'EAU BLEU

T17S - R19E

SL222220

P.O.B.

TRACT 45897 - Lafourche Parish, Louisiana

All of the lands now or formerly constituting the beds and bottoms of all water bodies of every nature and description as to which title is vested in the State of Louisiana, together with all islands arising therein and other lands formed by accretion or by reliction, where allowed by law, excepting tax adjudicated lands, and not presently under mineral lease on January 8, 2025, situated in Lafourche Parish, Louisiana, and more particularly described as follows: Beginning at a point having Coordinates of X = 2,277,292.95 and Y = 330,004.01, said point being the Southeast corner of State Lease No. 22220; thence North 10,435.48 feet along the Eastern boundary of said State Lease No. 22220 to a point being its Northeast corner having Coordinates of X = 2,277,292.95 and Y = 340,439.49; thence East 10,435.48 feet to a point having Coordinates of X = 2,287,728.42 and Y = 340,439.49; thence South 10,435.48 feet to a point having Coordinates of X = 2,287,728.42 and Y = 330,004.01; thence West 10,435.48 feet to the point of beginning, containing approximately **62 acres**, all as more particularly outlined on a plat on file in the Office of Mineral Resources, Department of Natural Resources. All bearings, distances and coordinates are based on Louisiana Coordinate System of 1927, (North or South Zone), where applicable.

NOTE: The above description of the Tract nominated for lease has been provided and corrected, where required, exclusively by the nomination party. Any mineral lease selected from this Tract and awarded by the Louisiana State Mineral and Energy Board shall be without warranty of any kind, either express, implied, or statutory, including, but not limited to, the implied warranties of merchantability and fitness for a particular purpose. Should the mineral lease awarded by the Louisiana State Mineral and Energy Board be subsequently modified, cancelled or abrogated due to the existence of conflicting leases, operating agreements, private claims or other future obligations or conditions which may affect all or any portion of the leased Tract, it shall not relieve the Lessee of the obligation to pay any bonus due thereon to the Louisiana State Mineral and Energy Board, nor shall the Louisiana State Mineral and Energy Board be obligated to refund any consideration paid by the Lessor prior to such modification, cancellation, or abrogation, including, but not limited to, bonuses, rentals and royalties.

NOTE: The State of Louisiana does hereby reserve, and this lease shall be subject to, the imprescriptible right of surface use in the nature of a servitude in favor of the Department of Natural Resources, including its Offices and Commissions, for the sole purpose of implementing, constructing, servicing and maintaining approved coastal zone management and/or restoration projects. Utilization of any and all rights derived under this lease by the mineral lessee, its agents, successors or assigns, shall not interfere with nor hinder the reasonable surface use by the Department of Natural Resources, its Offices or Commissions, as herein above reserved.

Applicant: REEL MAGIC, LLC

Bidder	Cash Payment	Price/ Acre	Rental	Oil	Gas	Other

Legend

25010001



Active Leases



0 1,500 3,000 6,000 Feet



LAFOURCHE

T17S -
R20E

BAYOU
LAFOURCHE

T17S -
R19E

SL 22220

P.O.B.

TRACT 45898 - Lafourche Parish, Louisiana

All of the lands now or formerly constituting the beds and bottoms of all water bodies of every nature and description as to which title is vested in the State of Louisiana, together with all islands arising therein and other lands formed by accretion or by reliction, where allowed by law, excepting tax adjudicated lands, and not presently under mineral lease on January 8, 2025, situated in Lafourche Parish, Louisiana, and more particularly described as follows: Beginning at a point having Coordinates of X = 2,266,857.47 and Y = 330,004.01, said point being the Southwest corner of State Lease No. 22220; thence East 10,435.48 feet along the Southern boundary of said State Lease No. 22220 to a point being its Southeast corner having Coordinates of X = 2,277,292.95 and Y = 330,004.01; thence East 6,604.98 feet to a point having Coordinates of X = 2,283,897.93 and Y = 330,004.01; thence South 6,389.99 feet to a point having Coordinates of X = 2,283,897.93 and Y = 323,614.03; thence West 17,040.47 feet to a point having Coordinates of X = 2,266,857.47 and Y = 323,614.03; thence North 6,389.99 feet to the point of beginning, containing approximately **46 acres**, all as more particularly outlined on a plat on file in the Office of Mineral Resources, Department of Natural Resources. All bearings, distances and coordinates are based on Louisiana Coordinate System of 1927, (North or South Zone), where applicable.

NOTE: The above description of the Tract nominated for lease has been provided and corrected, where required, exclusively by the nomination party. Any mineral lease selected from this Tract and awarded by the Louisiana State Mineral and Energy Board shall be without warranty of any kind, either express, implied, or statutory, including, but not limited to, the implied warranties of merchantability and fitness for a particular purpose. Should the mineral lease awarded by the Louisiana State Mineral and Energy Board be subsequently modified, cancelled or abrogated due to the existence of conflicting leases, operating agreements, private claims or other future obligations or conditions which may affect all or any portion of the leased Tract, it shall not relieve the Lessee of the obligation to pay any bonus due thereon to the Louisiana State Mineral and Energy Board, nor shall the Louisiana State Mineral and Energy Board be obligated to refund any consideration paid by the Lessor prior to such modification, cancellation, or abrogation, including, but not limited to, bonuses, rentals and royalties.

NOTE: The State of Louisiana does hereby reserve, and this lease shall be subject to, the imprescriptible right of surface use in the nature of a servitude in favor of the Department of Natural Resources, including its Offices and Commissions, for the sole purpose of implementing, constructing, servicing and maintaining approved coastal zone management and/or restoration projects. Utilization of any and all rights derived under this lease by the mineral lessee, its agents, successors or assigns, shall not interfere with nor hinder the reasonable surface use by the Department of Natural Resources, its Offices or Commissions, as herein above reserved.

Applicant: REEL MAGIC, LLC

Bidder	Cash Payment	Price/ Acre	Rental	Oil	Gas	Other

Legend

25010003

Active Leases



0 1,000 2,000 4,000 Feet



LAFOURCHE

SI 22220

BAYOULEAU BLEU

P.O.B.

T17S - R20E

T17S - R19E

TRACT 45899 - Portion of Block 119, South Timbalier Area, Revised, Terrebonne Parish, Louisiana

All of the lands now or formerly constituting the beds and bottoms of all water bodies of every nature and description as to which title is vested in the State of Louisiana, together with all islands arising therein and other lands formed by accretion or by reliction, where allowed by law, excepting tax adjudicated lands, and not presently under mineral lease on January 8, 2025, situated in Terrebonne Parish, Louisiana, and more particularly described as follows: Beginning at a point on the South line of Tract 1 of State Lease No. 188, as amended, having Coordinates of X = 2,213,400.00 and Y = 149,367.23; thence North 89 degrees 39 minutes 55 seconds East 10,954.12 feet along the South line of said Tract 1 of State Lease No. 188., as amended, to its Southeast corner having Coordinates of X = 2,224,353.93 and Y = 149,431.22; thence North 89 degrees 39 minutes 55 seconds East 6,417.90 feet to a point on the East line of Block 119, South Timbalier Area, Revised, having Coordinates of X = 2,230,771.72 and Y = 149,468.71; thence South 866.45 feet along the East line of said Block 119 to a point on the Louisiana Coastline, as decreed by the Supreme Court of the United States, as determined by a Special Master appointed therein, in litigation styled *United States v. State of Louisiana et al No. 9 Original*, in 1975, having Coordinates of X = 2,230,771.72 and Y = 148,602.27; thence along said Coastline, the following courses: Southwesterly along a straight line to a point having Coordinates of X = 2,222,957 and Y = 146,695, Southwesterly along a straight line to a point having Coordinates of X = 2,221,937 and Y = 146,004, Southwesterly along a straight line to a point having Coordinates of X = 2,219,935 and Y = 144,971, Southwesterly along a straight line to a point having Coordinates of X = 2,218,146 and Y = 144,160, Southwesterly along a straight line to a point having Coordinates of X = 2,215,009 and Y = 143,380, and South 74 degrees 59 minutes 17 seconds West 1,665.85 feet to a point having Coordinates of X = 2,213,400.00 and Y = 142,948.51; thence North 6,418.72 feet to the point of beginning, **LESS AND EXCEPT** any portion of the Isles Dernieres Barrier Islands Refuge which map lie within the above described tract, **ALSO LESS AND EXCPE**T any privately owned land which map lie within the above described tract, containing approximately **1,149 acres**, all as more particularly outlined on a plat on file in the Office of Mineral Resources, Department of Natural Resources. All bearings, distances and coordinates are based on Louisiana Coordinate System of 1927, (North or South Zone), where applicable.

NOTE: The above description of the Tract nominated for lease has been provided and corrected, where required, exclusively by the nomination party. Any mineral lease selected from this Tract and awarded by the Louisiana State Mineral and Energy Board shall be without warranty of any kind, either express, implied, or statutory, including, but not limited to, the implied warranties of merchantability and fitness for a particular purpose. Should the mineral lease awarded by the Louisiana State Mineral and Energy Board be subsequently modified, cancelled or abrogated due to the existence of conflicting leases, operating agreements, private claims or other future obligations or conditions which may affect all or any portion of the leased

Tract, it shall not relieve the Lessee of the obligation to pay any bonus due thereon to the Louisiana State Mineral and Energy Board, nor shall the Louisiana State Mineral and Energy Board be obligated to refund any consideration paid by the Lessor prior to such modification, cancellation, or abrogation, including, but not limited to, bonuses, rentals and royalties.

NOTE: The State of Louisiana does hereby reserve, and this lease shall be subject to, the imprescriptible right of surface use in the nature of a servitude in favor of the Department of Natural Resources, including its Offices and Commissions, for the sole purpose of implementing, constructing, servicing and maintaining approved coastal zone management and/or restoration projects. Utilization of any and all rights derived under this lease by the mineral lessee, its agents, successors or assigns, shall not interfere with nor hinder the reasonable surface use by the Department of Natural Resources, its Offices or Commissions, as herein above reserved.

Applicant: QZ ENERGY, LLC

Bidder	Cash Payment	Price/ Acre	Rental	Oil	Gas	Other



Legend

- 25010026
- Wildlife
- Blocks
- Active Leases

P.O.B.

SL 188

LAKE PELTO

TERREBONNE

South Timbalier
Area, Revised

GULF OF
MEXICO

ST0119

GULF OF
MEXICO

ST0009

Isles Dernieres
Barrier
Islands Refuge

ST0008

TRACT 45900 - Terrebonne Parish, Louisiana

All of the lands now or formerly constituting the beds and bottoms of all water bodies of every nature and description as to which title is vested in the State of Louisiana, together with all islands arising therein and other lands formed by accretion or by reliction, where allowed by law, excepting tax adjudicated lands, and not presently under mineral lease on January 8, 2025, situated in Terrebonne Parish, Louisiana, and more particularly described as follows: Beginning at a point having Coordinates of X = 2,195,372.46 and Y = 149,261.91; thence South 2,813.56 feet to a point on the Northern boundary of State Lease No. 19141 having Coordinates of X = 2,195,372.46 and Y = 146,448.35; thence along the boundary of said State Lease No. 19141, the following courses: South 75 degrees 52 minutes 11 seconds West 1,440.85 feet to a point having Coordinates of X = 2,193,975.20 and Y = 146,096.60; South 15 degrees 42 minutes 04 seconds East 664.39 feet to a point having Coordinates of X = 2,194,155.00 and Y = 145,457.00; South 74 degrees 13 minutes 35 seconds West 2,152.04 feet to a point having Coordinates of X = 2,192,084.00 and Y = 144,872.00; South 14 degrees 12 minutes 07 seconds East 2,433.37 feet to a point having Coordinates of X = 2,192,681.00 and Y = 142,513.00; and North 73 degrees 42 minutes 50 seconds East 2,803.97 feet to a point having Coordinates of X = 2,195,372.46 and Y = 143,299.33; thence South 5,554.17 feet to a point on the Louisiana Coastline, as decreed by the Supreme Court of the United States, as determined by a Special Master appointed therein, in litigation styled *United States v. State of Louisiana et al No. 9 Original*, in 1975, having Coordinates of X = 2,195,372.46 and Y = 137,745.16; thence along said Coastline, the following courses: Southwesterly along a straight line to a point having Coordinates of X = 2,192,330 and Y = 136,944; Southwesterly along a straight line to a point having Coordinates of X = 2,186,596 and Y = 135,997; and Southwesterly along a straight line to a point on the East line of Block 43, Ship Shoal Area, having Coordinates of X = 2,186,425.06 and Y = 135,960.51; thence North 00 degrees 17 minutes 30 seconds West 8,936.40 feet along the East line of said Block 43 to its Northeaster corner, said corner being the Southeast corner of Block 42, Ship Shoal Area, having Coordinates of X = 2,186,379.57 and Y = 144,896.79; thence North 00 degrees 17 minutes 30 seconds West 4,312.51 feet along the East line of said Block 42 to a point having Coordinates of X = 2,186,357.61 and Y = 149,209.24; thence North 89 degrees 39 minutes 55 seconds East 9,015.00 feet to the point of beginning, **LESS AND EXCEPT** any portion of the Isles Dernieres Barrier Islands Refuge which map lie within the above described tract, **ALSO LESS AND EXCPET** any privately owned land which map lie within the above described tract, containing approximately **1,949 acres**, all as more particularly outlined on a plat on file in the Office of Mineral Resources, Department of Natural Resources. All bearings, distances and coordinates are based on Louisiana Coordinate System of 1927, (North or South Zone), where applicable.

NOTE: The above description of the Tract nominated for lease has been provided and corrected, where required, exclusively by the nomination party. Any mineral lease selected from this Tract and awarded by the Louisiana State Mineral and Energy Board shall be without warranty of any kind, either

express, implied, or statutory, including, but not limited to, the implied warranties of merchantability and fitness for a particular purpose. Should the mineral lease awarded by the Louisiana State Mineral and Energy Board be subsequently modified, cancelled or abrogated due to the existence of conflicting leases, operating agreements, private claims or other future obligations or conditions which may affect all or any portion of the leased Tract, it shall not relieve the Lessee of the obligation to pay any bonus due thereon to the Louisiana State Mineral and Energy Board, nor shall the Louisiana State Mineral and Energy Board be obligated to refund any consideration paid by the Lessor prior to such modification, cancellation, or abrogation, including, but not limited to, bonuses, rentals and royalties.

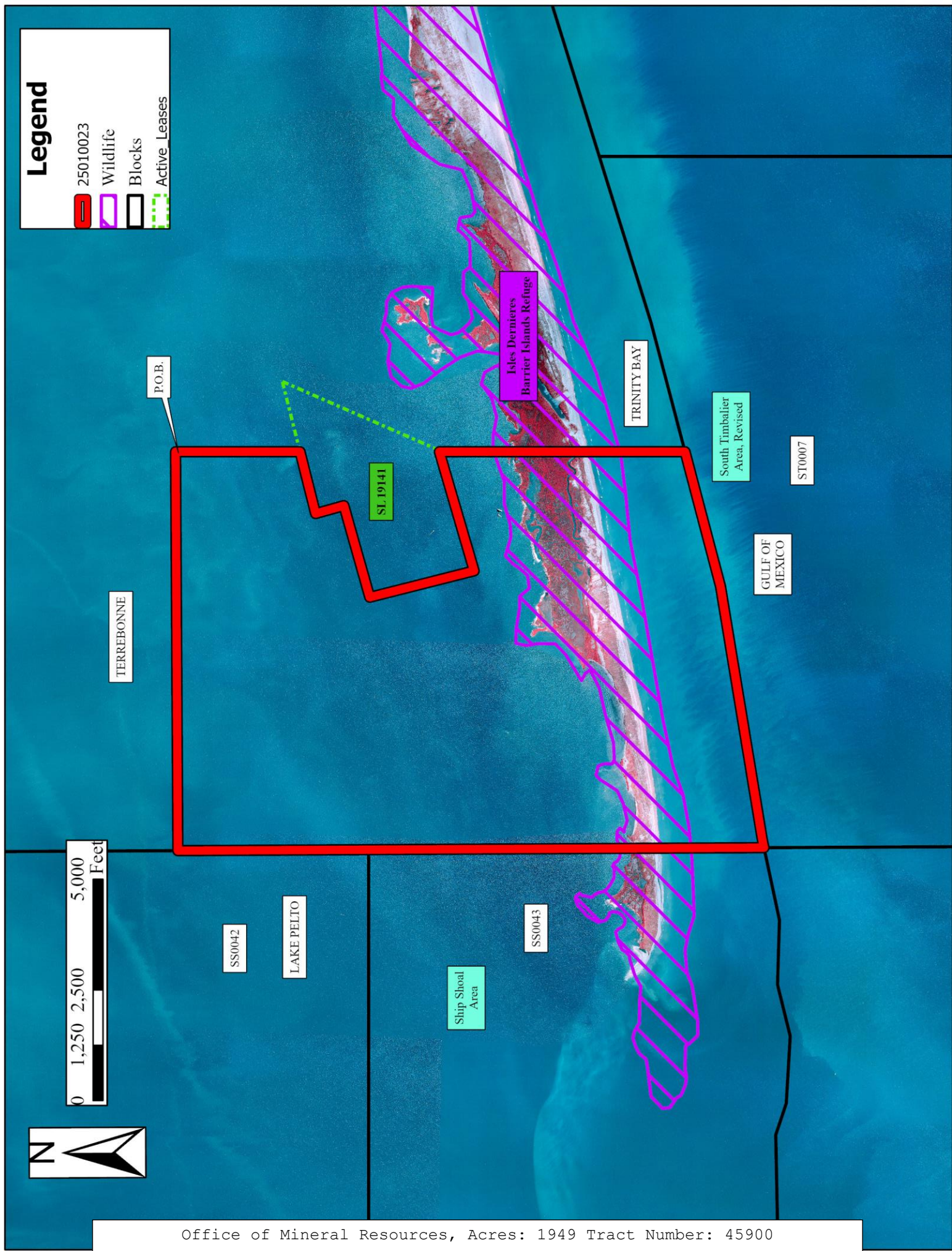
NOTE: The State of Louisiana does hereby reserve, and this lease shall be subject to, the imprescriptible right of surface use in the nature of a servitude in favor of the Department of Natural Resources, including its Offices and Commissions, for the sole purpose of implementing, constructing, servicing and maintaining approved coastal zone management and/or restoration projects. Utilization of any and all rights derived under this lease by the mineral lessee, its agents, successors or assigns, shall not interfere with nor hinder the reasonable surface use by the Department of Natural Resources, its Offices or Commissions, as herein above reserved.

Applicant: QZ ENERGY, LLC

Bidder	Cash Payment	Price/ Acre	Rental	Oil	Gas	Other

Legend

- 25010023
- Wildlife
- Blocks
- Active Leases



TRACT 45901 - Terrebonne Parish, Louisiana

All of the lands now or formerly constituting the beds and bottoms of all water bodies of every nature and description as to which title is vested in the State of Louisiana, together with all islands arising therein and other lands formed by accretion or by reliction, where allowed by law, excepting tax adjudicated lands, and not presently under mineral lease on January 8, 2025, situated in Terrebonne Parish, Louisiana, and more particularly described as follows: Beginning at a point having Coordinates of X = 2,195,372.46 and Y = 149,261.91; thence North 89 degrees 39 minutes 55 seconds East 8,150.96 feet to the Southeast corner of Tract 1 of State Lease No. 188, as amended, having Coordinates of X = 2,203,523.28 and Y = 149,309.53; thence North 89 degrees 39 minutes 55 seconds East 861.89 feet along the South line of said Tract 1 of State Lease No. 188, as amended, to a point having Coordinates of X = 2,204,385.15 and Y = 149,314.56; thence South 8,902.48 feet to a point on the Louisiana Coastline, as decreed by the Supreme Court of the United States, as determined by a Special Master appointed therein, in litigation styled *United States v. State of Louisiana et al No. 9 Original*, in 1975, having Coordinates of X = 2,204,385.15 and Y = 140,412.09; thence along said Coastline, the following courses: Southwesterly along a straight line to a point having Coordinates of X = 2,198,296 and Y = 138,515 and Southwesterly along a straight line to a point having Coordinates of X = 2,195,372.46 and Y = 137,745.16; thence North 5,554.17 feet to a point on the Southern boundary of State Lease No. 19141 having Coordinates of X = 2,195,372.46 and Y = 143,299.33; thence along the boundary of said State Lease No. 19141 the following courses: North 73 degrees 42 minutes 50 seconds East 38.07 feet to a point having Coordinates of X = 2,195,409.00 and Y = 143,310.00; North 23 degrees 39 minutes 54 seconds East 3,862.69 feet to a point having Coordinates of X = 2,196,959.44 and Y = 146,847.87; and South 75 degrees 52 minutes 10 seconds West 1,636.50 feet to a point having Coordinates of X = 2,195,372.46 and Y = 146,448.35; thence North 2,813.56 feet to the point of beginning, **LESS AND EXCEPT** any portion of the Isles Dernieres Barrier Islands Refuge which map lie within the above described tract, **ALSO LESS AND EXCPET** any privately owned land which map lie within the above described tract, containing approximately **1,539 acres**, all as more particularly outlined on a plat on file in the Office of Mineral Resources, Department of Natural Resources. All bearings, distances and coordinates are based on Louisiana Coordinate System of 1927, (North or South Zone), where applicable.

NOTE: The above description of the Tract nominated for lease has been provided and corrected, where required, exclusively by the nomination party. Any mineral lease selected from this Tract and awarded by the Louisiana State Mineral and Energy Board shall be without warranty of any kind, either express, implied, or statutory, including, but not limited to, the implied warranties of merchantability and fitness for a particular purpose. Should the mineral lease awarded by the Louisiana State Mineral and Energy Board be subsequently modified, cancelled or abrogated due to the existence of conflicting leases, operating agreements, private claims or other future obligations or conditions which may affect all or any portion of the leased

Tract, it shall not relieve the Lessee of the obligation to pay any bonus due thereon to the Louisiana State Mineral and Energy Board, nor shall the Louisiana State Mineral and Energy Board be obligated to refund any consideration paid by the Lessor prior to such modification, cancellation, or abrogation, including, but not limited to, bonuses, rentals and royalties.

NOTE: The State of Louisiana does hereby reserve, and this lease shall be subject to, the imprescriptible right of surface use in the nature of a servitude in favor of the Department of Natural Resources, including its Offices and Commissions, for the sole purpose of implementing, constructing, servicing and maintaining approved coastal zone management and/or restoration projects. Utilization of any and all rights derived under this lease by the mineral lessee, its agents, successors or assigns, shall not interfere with nor hinder the reasonable surface use by the Department of Natural Resources, its Offices or Commissions, as herein above reserved.

Applicant: QZ ENERGY, LLC

Bidder	Cash Payment	Price/ Acre	Rental	Oil	Gas	Other



Legend

- 25010024
- Wildlife
- Blocks
- Active Leases

TERREBONNE

P.O.B.

LAKE PELTO

SL 19141

SL 188

Isles Dernieres
Barrier
Islands Refuge

South Timbalier
Area, Revised

ST0008

GULF OF
MEXICO

TRINITY BAY

ST0007