

#### **TRACT 45906 - Vernon Parish, Louisiana**

All of the mineral rights only under land adjudicated to and acquired by the State of Louisiana in and through a proper tax sale, and subsequently alienated by the State which retained the mineral rights thereto, and which is not under valid mineral lease from the State of Louisiana on January 8, 2025, situated in Vernon Parish, Louisiana, and being more fully described as follows: The East half (E/2) of the Northeast quarter (NE/4) of the Southwest quarter (SW/4) of Section 19, Township 1 South, Range 11 West, Vernon Parish, Louisiana, being the same land adjudicated to the State of Louisiana for unpaid taxes for the year 1932, in the name of Copeland Chev. Co. Subsequently, the State of Louisiana granted Patent No. 14234, dated May 13, 1946 to W.M. Craft, containing approximately **20 acres**, all as more particularly outlined on a plat on file in the Office of Mineral Resources, Department of Natural Resources. All bearings, distances and coordinates are based on Louisiana Coordinate System of 1927, (North or South Zone), where applicable.

NOTE: The above description of the Tract nominated for lease has been provided and corrected, where required, exclusively by the nomination party. Any mineral lease selected from this Tract and awarded by the Louisiana State Mineral and Energy Board shall be without warranty of any kind, either express, implied, or statutory, including, but not limited to, the implied warranties of merchantability and fitness for a particular purpose. Should the mineral lease awarded by the Louisiana State Mineral and Energy Board be subsequently modified, cancelled or abrogated due to the existence of conflicting leases, operating agreements, private claims or other future obligations or conditions which may affect all or any portion of the leased Tract, it shall not relieve the Lessee of the obligation to pay any bonus due thereon to the Louisiana State Mineral and Energy Board, nor shall the Louisiana State Mineral and Energy Board be obligated to refund any consideration paid by the Lessor prior to such modification, cancellation, or abrogation, including, but not limited to, bonuses, rentals and royalties.

NOTE: No surface activity on this tract undertaken in conjunction with any operations under any mineral lease given on this tract will be allowed without prior approval of the surface owner and further, no such right of surface use shall be deemed to have been given as part of any mineral lease by the State of Louisiana on this tract.

Applicant: FIREBRAND ENERGY

Bidder	Cash Payment	Price/ Acre	Rental	Oil	Gas	Other

# Legend

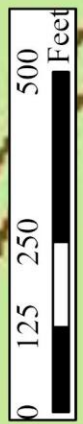
25010006



VERNON

T1S - R11W

19



#### **TRACT 45907 - Vernon Parish, Louisiana**

All of the mineral rights only under land adjudicated to and acquired by the State of Louisiana in and through a proper tax sale, and subsequently alienated by the State which retained the mineral rights thereto, and which is not under valid mineral lease from the State of Louisiana on January 8, 2025, situated in Vernon Parish, Louisiana, and being more fully described as follows: The East half (E/2) of the Northeast quarter (NE/4) of the Northeast quarter (NE/4) of Section 6, Township 1 South, Range 11 West, Vernon Parish, Louisiana, being the same land adjudicated to the State of Louisiana for unpaid taxes for the year 1930, in the name of A.L. Burleson Estate. Subsequently, the State of Louisiana granted Patent No. 13675, dated November 6, 1944 to Mark Jarrell, containing approximately **20 acres**, all as more particularly outlined on a plat on file in the Office of Mineral Resources, Department of Natural Resources. All bearings, distances and coordinates are based on Louisiana Coordinate System of 1927, (North or South Zone), where applicable.

NOTE: The above description of the Tract nominated for lease has been provided and corrected, where required, exclusively by the nomination party. Any mineral lease selected from this Tract and awarded by the Louisiana State Mineral and Energy Board shall be without warranty of any kind, either express, implied, or statutory, including, but not limited to, the implied warranties of merchantability and fitness for a particular purpose. Should the mineral lease awarded by the Louisiana State Mineral and Energy Board be subsequently modified, cancelled or abrogated due to the existence of conflicting leases, operating agreements, private claims or other future obligations or conditions which may affect all or any portion of the leased Tract, it shall not relieve the Lessee of the obligation to pay any bonus due thereon to the Louisiana State Mineral and Energy Board, nor shall the Louisiana State Mineral and Energy Board be obligated to refund any consideration paid by the Lessor prior to such modification, cancellation, or abrogation, including, but not limited to, bonuses, rentals and royalties.

NOTE: No surface activity on this tract undertaken in conjunction with any operations under any mineral lease given on this tract will be allowed without prior approval of the surface owner and further, no such right of surface use shall be deemed to have been given as part of any mineral lease by the State of Louisiana on this tract.

Applicant: FIREBRAND ENERGY

Bidder	Cash Payment	Price/ Acre	Rental	Oil	Gas	Other



**Legend**

25010008



VERNON

TIN - RIW

TIS - RIW

32

5

31

6



**TRACT 45908 - Vernon Parish, Louisiana**

All of the mineral rights only under land adjudicated to and acquired by the State of Louisiana in and through a proper tax sale, and subsequently alienated by the State which retained the mineral rights thereto, and which is not under valid mineral lease from the State of Louisiana on January 8, 2025, situated in Vernon Parish, Louisiana, and being more fully described as follows: The Southeast quarter (SE/4) of the Northeast quarter (NE/4), and the Northeast quarter (NE/4) of the Southeast quarter (SE/4) of Section 7, Township 1 South, Range 11 West, Vernon Parish, Louisiana, being the same land adjudicated to the State of Louisiana for unpaid taxes for the year 1930, in the name of A.L. Burleson Estate. Subsequently, the State of Louisiana granted Patent No. 13570, dated July 5, 1944 to Lamar Evans, containing approximately **80 acres**, all as more particularly outlined on a plat on file in the Office of Mineral Resources, Department of Natural Resources. All bearings, distances and coordinates are based on Louisiana Coordinate System of 1927, (North or South Zone), where applicable.

NOTE: The above description of the Tract nominated for lease has been provided and corrected, where required, exclusively by the nomination party. Any mineral lease selected from this Tract and awarded by the Louisiana State Mineral and Energy Board shall be without warranty of any kind, either express, implied, or statutory, including, but not limited to, the implied warranties of merchantability and fitness for a particular purpose. Should the mineral lease awarded by the Louisiana State Mineral and Energy Board be subsequently modified, cancelled or abrogated due to the existence of conflicting leases, operating agreements, private claims or other future obligations or conditions which may affect all or any portion of the leased Tract, it shall not relieve the Lessee of the obligation to pay any bonus due thereon to the Louisiana State Mineral and Energy Board, nor shall the Louisiana State Mineral and Energy Board be obligated to refund any consideration paid by the Lessor prior to such modification, cancellation, or abrogation, including, but not limited to, bonuses, rentals and royalties.

NOTE: No surface activity on this tract undertaken in conjunction with any operations under any mineral lease given on this tract will be allowed without prior approval of the surface owner and further, no such right of surface use shall be deemed to have been given as part of any mineral lease by the State of Louisiana on this tract.

Applicant: FIREBRAND ENERGY

Bidder	Cash Payment	Price/ Acre	Rental	Oil	Gas	Other



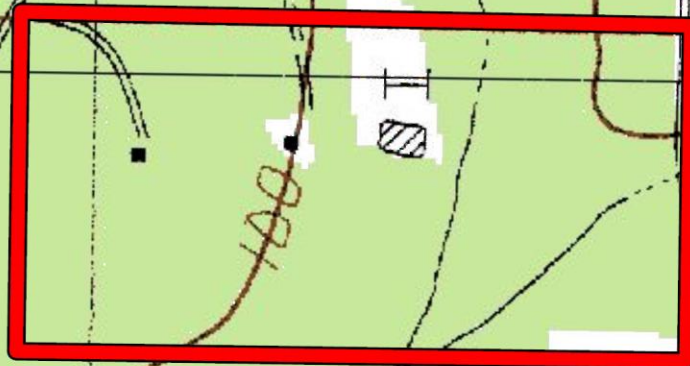
**Legend**

25010007

0 500 1,000 2,000 Feet



TIS  
RIW  
VERNON



#### **TRACT 45909 - Vernon Parish, Louisiana**

All of the mineral rights only under land adjudicated to and acquired by the State of Louisiana in and through a proper tax sale, and subsequently alienated by the State which retained the mineral rights thereto, and which is not under valid mineral lease from the State of Louisiana on January 8, 2025, situated in Vernon Parish, Louisiana, and being more fully described as follows: The West quarter (W/4) of the Southeast quarter (SE/4) of the Northwest quarter (NW/4) of Section 9, Township 1 South, Range 11 West, Vernon Parish, Louisiana, being the same land adjudicated to the State of Louisiana for unpaid taxes for the year 1931, in the name of Elmer Evans. Subsequently, the State of Louisiana granted Patent No. 14350, dated August 2, 1946 to Elmer Evans, containing approximately **10 acres**, all as more particularly outlined on a plat on file in the Office of Mineral Resources, Department of Natural Resources. All bearings, distances and coordinates are based on Louisiana Coordinate System of 1927, (North or South Zone), where applicable.

NOTE: The above description of the Tract nominated for lease has been provided and corrected, where required, exclusively by the nomination party. Any mineral lease selected from this Tract and awarded by the Louisiana State Mineral and Energy Board shall be without warranty of any kind, either express, implied, or statutory, including, but not limited to, the implied warranties of merchantability and fitness for a particular purpose. Should the mineral lease awarded by the Louisiana State Mineral and Energy Board be subsequently modified, cancelled or abrogated due to the existence of conflicting leases, operating agreements, private claims or other future obligations or conditions which may affect all or any portion of the leased Tract, it shall not relieve the Lessee of the obligation to pay any bonus due thereon to the Louisiana State Mineral and Energy Board, nor shall the Louisiana State Mineral and Energy Board be obligated to refund any consideration paid by the Lessor prior to such modification, cancellation, or abrogation, including, but not limited to, bonuses, rentals and royalties.

NOTE: No surface activity on this tract undertaken in conjunction with any operations under any mineral lease given on this tract will be allowed without prior approval of the surface owner and further, no such right of surface use shall be deemed to have been given as part of any mineral lease by the State of Louisiana on this tract.

Applicant: FIREBRAND ENERGY

Bidder	Cash Payment	Price/ Acre	Rental	Oil	Gas	Other



Legend

25010032



TIS -  
RIIW

VERNON

9



#### **TRACT 45910 - Vernon Parish, Louisiana**

All of the mineral rights only under land adjudicated to and acquired by the State of Louisiana in and through a proper tax sale, and subsequently alienated by the State which retained the mineral rights thereto, and which is not under valid mineral lease from the State of Louisiana on January 8, 2025, situated in Vernon Parish, Louisiana, and being more fully described as follows: The Northwest quarter (NW/4) of the Northwest quarter (NW/4) of Section 13, Township 1 South, Range 12 West, Vernon Parish, Louisiana, being the same land adjudicated to the State of Louisiana for unpaid taxes for the year 1931, in the name of Mrs. J.E. Welch. Subsequently, the State of Louisiana granted Patent No. 15605, dated September 6, 1949 to L.N. Welch, containing approximately **40 acres**, all as more particularly outlined on a plat on file in the Office of Mineral Resources, Department of Natural Resources. All bearings, distances and coordinates are based on Louisiana Coordinate System of 1927, (North or South Zone), where applicable.

NOTE: The above description of the Tract nominated for lease has been provided and corrected, where required, exclusively by the nomination party. Any mineral lease selected from this Tract and awarded by the Louisiana State Mineral and Energy Board shall be without warranty of any kind, either express, implied, or statutory, including, but not limited to, the implied warranties of merchantability and fitness for a particular purpose. Should the mineral lease awarded by the Louisiana State Mineral and Energy Board be subsequently modified, cancelled or abrogated due to the existence of conflicting leases, operating agreements, private claims or other future obligations or conditions which may affect all or any portion of the leased Tract, it shall not relieve the Lessee of the obligation to pay any bonus due thereon to the Louisiana State Mineral and Energy Board, nor shall the Louisiana State Mineral and Energy Board be obligated to refund any consideration paid by the Lessor prior to such modification, cancellation, or abrogation, including, but not limited to, bonuses, rentals and royalties.

NOTE: No surface activity on this tract undertaken in conjunction with any operations under any mineral lease given on this tract will be allowed without prior approval of the surface owner and further, no such right of surface use shall be deemed to have been given as part of any mineral lease by the State of Louisiana on this tract.

Applicant: FIREBRAND ENERGY

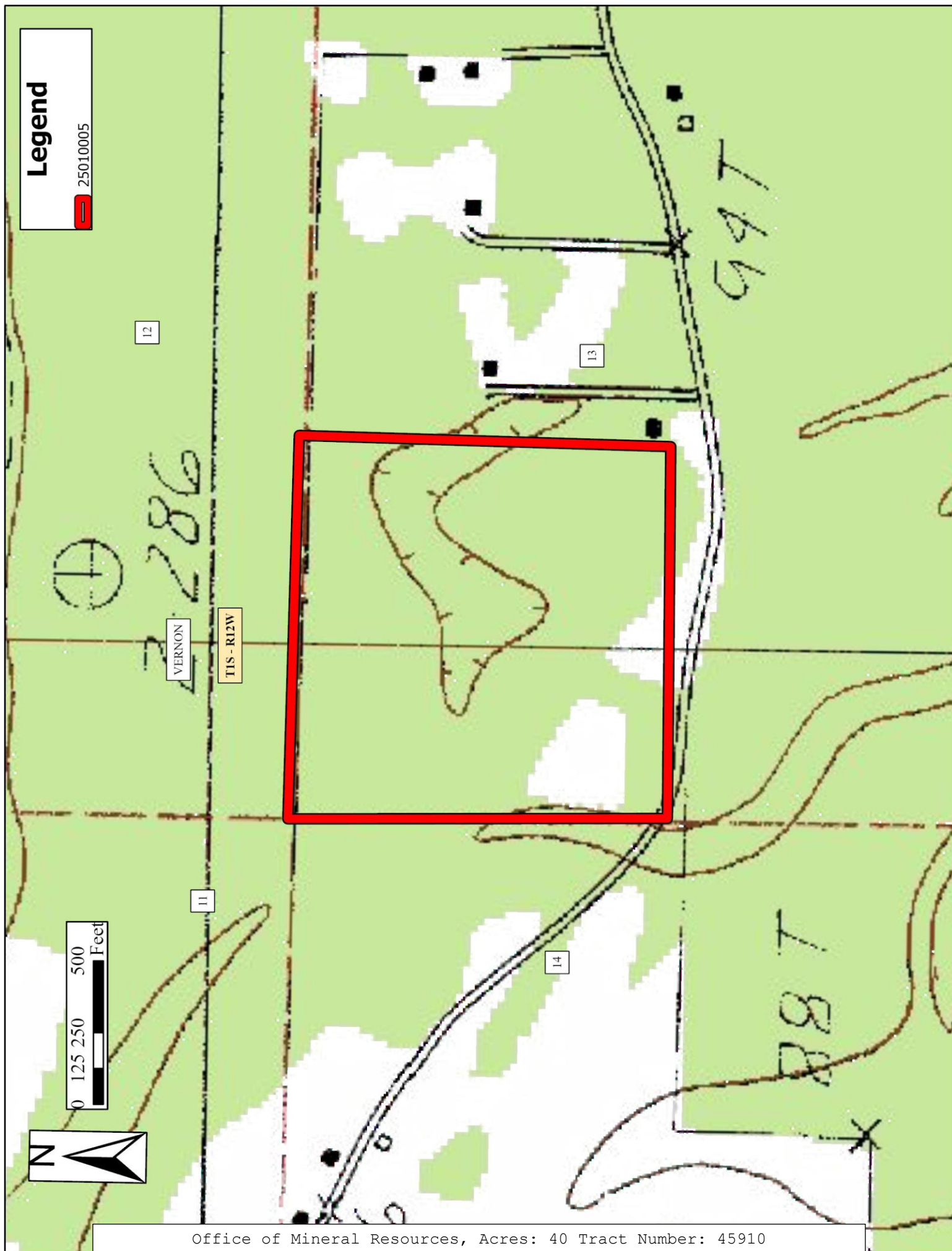
Bidder	Cash Payment	Price/ Acre	Rental	Oil	Gas	Other



**Legend**

 25010005

0 125 250 500 Feet



#### **TRACT 45911 - Vernon Parish, Louisiana**

All of the mineral rights only under land adjudicated to and acquired by the State of Louisiana in and through a proper tax sale, and subsequently alienated by the State which retained the mineral rights thereto, and which is not under valid mineral lease from the State of Louisiana on January 8, 2025, situated in Vernon Parish, Louisiana, and being more fully described as follows: Begin at the Southeast corner of the Southwest quarter (SW/4), Section 10, Township 1 South, Range 11 West, Vernon Parish, Louisiana, and run North 200 yards, West 290 yards, South 200 yards and East 290 yards to the point of beginning, being the same land adjudicated to the State of Louisiana for unpaid taxes for the year 1932, in the name of J.W. Jarrell. Subsequently, the State of Louisiana granted Patent No. 19025, dated August 26, 1959 to Mrs. Tabitha Jarrell Davis, containing approximately **12 acres**, all as more particularly outlined on a plat on file in the Office of Mineral Resources, Department of Natural Resources. All bearings, distances and coordinates are based on Louisiana Coordinate System of 1927, (North or South Zone), where applicable.

NOTE: The above description of the Tract nominated for lease has been provided and corrected, where required, exclusively by the nomination party. Any mineral lease selected from this Tract and awarded by the Louisiana State Mineral and Energy Board shall be without warranty of any kind, either express, implied, or statutory, including, but not limited to, the implied warranties of merchantability and fitness for a particular purpose. Should the mineral lease awarded by the Louisiana State Mineral and Energy Board be subsequently modified, cancelled or abrogated due to the existence of conflicting leases, operating agreements, private claims or other future obligations or conditions which may affect all or any portion of the leased Tract, it shall not relieve the Lessee of the obligation to pay any bonus due thereon to the Louisiana State Mineral and Energy Board, nor shall the Louisiana State Mineral and Energy Board be obligated to refund any consideration paid by the Lessor prior to such modification, cancellation, or abrogation, including, but not limited to, bonuses, rentals and royalties.

NOTE: No surface activity on this tract undertaken in conjunction with any operations under any mineral lease given on this tract will be allowed without prior approval of the surface owner and further, no such right of surface use shall be deemed to have been given as part of any mineral lease by the State of Louisiana on this tract.

Applicant: FIREBRAND ENERGY

Bidder	Cash Payment	Price/ Acre	Rental	Oil	Gas	Other



# Legend

25010033

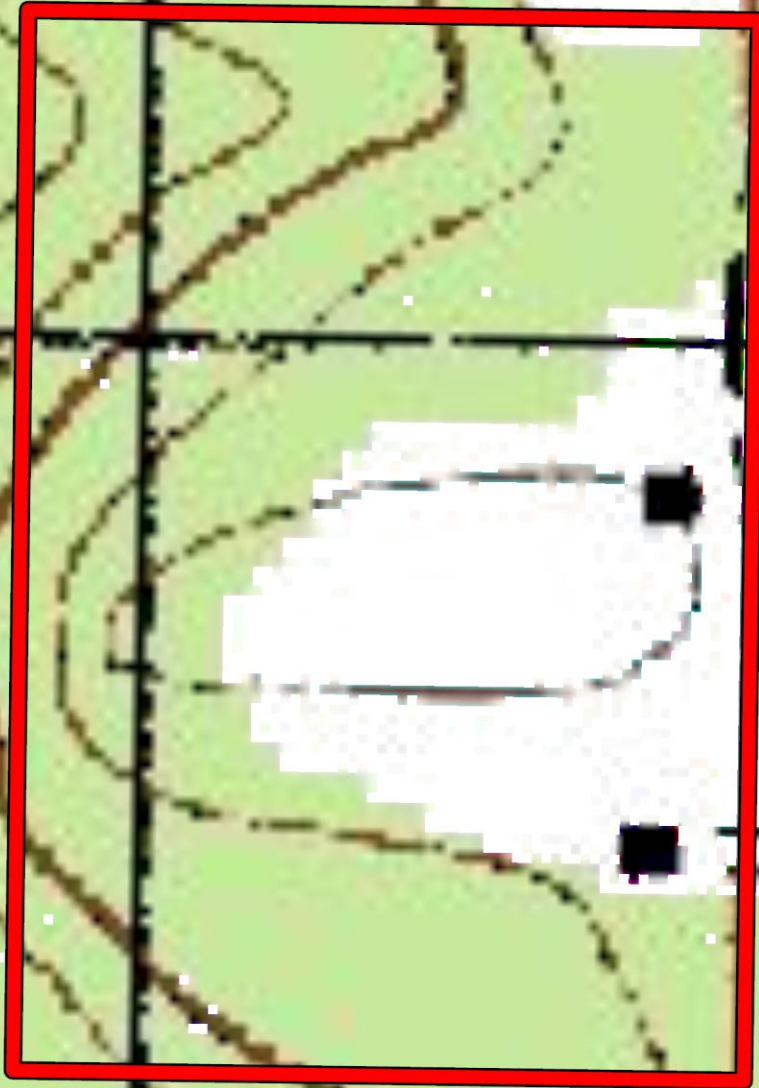


TIS -  
RIIW

VERNON

10

15



#### **TRACT 45912 - Vernon Parish, Louisiana**

All of the mineral rights only under land adjudicated to and acquired by the State of Louisiana in and through a proper tax sale, and subsequently alienated by the State which retained the mineral rights thereto, and which is not under valid mineral lease from the State of Louisiana on January 8, 2025, situated in Vernon Parish, Louisiana, and being more fully described as follows: The Southwest quarter (SW/4) of the Northwest quarter (NW/4) of Section 29, Township 1 South, Range 11 West, Vernon Parish, Louisiana, being the same land adjudicated to the State of Louisiana for unpaid taxes for the year 1923, in the name of M.E. Stark. Subsequently, the State of Louisiana granted Patent No. 13614, dated September 2, 1944 to Norris B. Craft, containing approximately **40 acres**, all as more particularly outlined on a plat on file in the Office of Mineral Resources, Department of Natural Resources. All bearings, distances and coordinates are based on Louisiana Coordinate System of 1927, (North or South Zone), where applicable.

NOTE: The above description of the Tract nominated for lease has been provided and corrected, where required, exclusively by the nomination party. Any mineral lease selected from this Tract and awarded by the Louisiana State Mineral and Energy Board shall be without warranty of any kind, either express, implied, or statutory, including, but not limited to, the implied warranties of merchantability and fitness for a particular purpose. Should the mineral lease awarded by the Louisiana State Mineral and Energy Board be subsequently modified, cancelled or abrogated due to the existence of conflicting leases, operating agreements, private claims or other future obligations or conditions which may affect all or any portion of the leased Tract, it shall not relieve the Lessee of the obligation to pay any bonus due thereon to the Louisiana State Mineral and Energy Board, nor shall the Louisiana State Mineral and Energy Board be obligated to refund any consideration paid by the Lessor prior to such modification, cancellation, or abrogation, including, but not limited to, bonuses, rentals and royalties.

NOTE: No surface activity on this tract undertaken in conjunction with any operations under any mineral lease given on this tract will be allowed without prior approval of the surface owner and further, no such right of surface use shall be deemed to have been given as part of any mineral lease by the State of Louisiana on this tract.

Applicant: FIREBRAND ENERGY

Bidder	Cash Payment	Price/ Acre	Rental	Oil	Gas	Other



# Legend

25010004



VERNON

TIS -  
RIIW

29

30



**TRACT 45913 - Calcasieu Parish, Louisiana**

All of the land adjudicated to and acquired by the State of Louisiana in and through a proper tax sale, including surface and mineral rights, owned by and not already under valid mineral lease from the State of Louisiana on January 8, 2025, situated in Calcasieu Parish, Louisiana, and being more fully described as follows: One-fourth interest in one **(1) acre** in a square in the southeast corner of the Northeast Quarter of the Southeast Quarter of the Northwest Quarter (NE/4 SE/4 NW/4), Section 33, Township 10 South, Range 12 West, Calcasieu Parish, Louisiana, more particularly described as Parcel No. 253960 assessed to Eva Peyton Sullivan et al, adjudicated to Parish of Calcasieu in tax sale dated June 27, 2007, recorded as File No. 2821198 of the Official Public Records of Calcasieu Parish, Louisiana, all as more particularly outlined on a plat on file in the Office of Mineral Resources, Department of Natural Resources. All bearings, distances and coordinates are based on Louisiana Coordinate System of 1927, (North or South Zone), where applicable.

NOTE: The above description of the Tract nominated for lease has been provided and corrected, where required, exclusively by the nomination party. Any mineral lease selected from this Tract and awarded by the Louisiana State Mineral and Energy Board shall be without warranty of any kind, either express, implied, or statutory, including, but not limited to, the implied warranties of merchantability and fitness for a particular purpose. Should the mineral lease awarded by the Louisiana State Mineral and Energy Board be subsequently modified, cancelled or abrogated due to the existence of conflicting leases, operating agreements, private claims or other future obligations or conditions which may affect all or any portion of the leased Tract, it shall not relieve the Lessee of the obligation to pay any bonus due thereon to the Louisiana State Mineral and Energy Board, nor shall the Louisiana State Mineral and Energy Board be obligated to refund any consideration paid by the Lessor prior to such modification, cancellation, or abrogation, including, but not limited to, bonuses, rentals and royalties.

NOTE: The Office of Mineral Resources will require a minimum bonus of \$275 per acre and a minimum royalty of 23%.

Applicant: SANDPOINT ENERGY PARTNERS LLC

Bidder	Cash Payment	Price/ Acre	Rental	Oil	Gas	Other

**Legend**

25010034

0 87.5 175 350 Feet

CALCASIEU

T10S -  
R12W

33