

TRACT 45923 - Caddo Parish, Louisiana

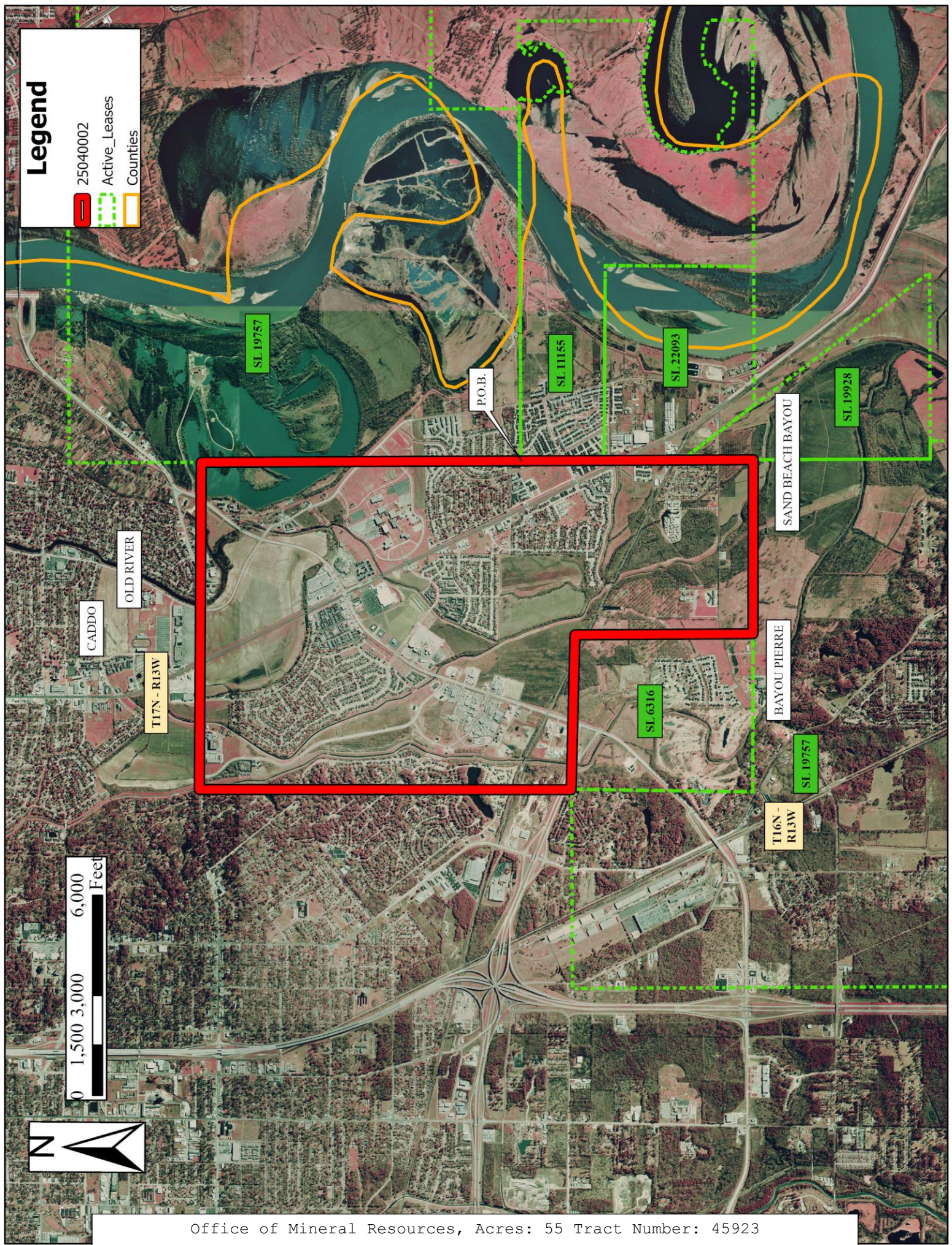
All of the lands now or formerly constituting the beds and bottoms of all water bodies of every nature and description as to which title is vested in the State of Louisiana, together with all islands arising therein and other lands formed by accretion or by reliction, where allowed by law, excepting tax adjudicated lands, and not presently under mineral lease on April 9, 2025, situated in Caddo Parish, Louisiana, and more particularly described as follows: Beginning at a point being the same as the Southwest corner of State Lease No. 19349, as amended, and the Northwest Corner of State Lease No. 11155, as amended, having Coordinates of X = 1,630,100.00 and Y = 638,800.00; thence South 2,498.71 feet along the Western boundary of State Lease No. 11155, as amended, to a point being the Northwestern corner of State Lease No. 22093, as amended, having Coordinates of X = 1,630,100.00 and Y = 636,301.29; thence Southerly approximately 2,335 feet along the Western boundary of State Lease No. 22093, to a point being the Northwestern corner of State Lease No. 19928, as amended; thence Southerly approximately 2,149 feet along the Western boundary of State Lease No. 19928, as amended, to a point being the Easternmost Northeastern corner of State Lease No. 19757; thence Westerly approximately 5,223 feet along the Northern boundary of State Lease No. 19757, to a point being the Southeastern corner of State Lease No. 6316, as amended; thence along the boundaries of said State Lease No. 6316, as amended, the following courses: Northerly approximately 5,349 feet and Westerly approximately 4,649 feet to its Northwestern corner; thence Northerly approximately 11,168 feet to a point having Coordinates of X = 1,620,279.31 and Y = 648,500.33; thence South 89 degrees 23 minutes 49 seconds East 9,821.85 feet to a point on the western boundary of State Lease No. 19349, as amended, having Coordinates of X = 1,630,100.62 and Y = 648,396.97; thence South 00 degrees 00 minutes 13 seconds West 9,596.97 feet along the Western boundary of State Lease No. 19349, as amended, to the point of beginning, **LESS AND EXCEPT** that portion, if any, of State Lease No. 6316, as amended, State Lease No. 11155, as amended, State Lease No. 19349, as amended, State Lease No. 19757, State Lease No. 19928, and State Lease No. 22093, that may lie within the above described tract, (This tract includes only waterbottoms claimed and owned by the state and specifically excludes any land which the state may claim or own and to which the mineral rights are vested in the state), containing approximately **55 acres**, all as more particularly outlined on a plat on file in the Office of Mineral Resources, Department of Natural Resources. All bearings, distances and coordinates are based on Louisiana Coordinate System of 1927, (North or South Zone), where applicable.

NOTE: The above description of the Tract nominated for lease has been provided and corrected, where required, exclusively by the nomination party. Any mineral lease selected from this Tract and awarded by the Louisiana State Mineral and Energy Board shall be without warranty of any kind, either express, implied, or statutory, including, but not limited to, the implied warranties of merchantability and fitness for a particular purpose. Should the mineral lease awarded by the Louisiana State Mineral and Energy Board be subsequently modified, cancelled or abrogated due to the existence of

conflicting leases, operating agreements, private claims or other future obligations or conditions which may affect all or any portion of the leased Tract, it shall not relieve the Lessee of the obligation to pay any bonus due thereon to the Louisiana State Mineral and Energy Board, nor shall the Louisiana State Mineral and Energy Board be obligated to refund any consideration paid by the Lessor prior to such modification, cancellation, or abrogation, including, but not limited to, bonuses, rentals and royalties.

Applicant: CYPRESS ENERGY PARTNERS, LLC

Bidder	Cash Payment	Price/ Acre	Rental	Oil	Gas	Other



TRACT 45924 - Caddo, De Soto, and Red River Parishes, Louisiana

All of the lands now or formerly constituting the beds and bottoms of all water bodies of every nature and description as to which title is vested in the State of Louisiana, together with all islands arising therein and other lands formed by accretion or by reliction, where allowed by law, excepting tax adjudicated lands, and not presently under mineral lease on April 9, 2025, situated in Caddo, De Soto, and Red River Parishes, Louisiana, and more particularly described as follows: Beginning at a point being the Northeast corner of State Lease No. 20091 having Coordinates of X = 1,655,073.84 and Y = 579,300.00; thence East 6,626.16 feet to a point being a Northwest corner of State Lease No. 20186 having Coordinates of X = 1,661,700.00 and Y = 579,300.00; thence South 6,700.00 feet along the Western boundary of said State Lease No. 20186 to a point having Coordinates of X = 1,661,700.00 and Y = 572,600.00; thence West 9,900.00 feet to a point having Coordinates of X = 1,651,800.00 and Y = 572,600.00; thence North 745.19 feet to a point on the Southern boundary of State Lease No. 17216, as amended, having Coordinates of X = 1,651,800.00 and Y = 573,345.19; thence along the boundary of said State Lease No. 17216, as amended, the following: South 89 degrees 37 minutes 19 seconds East 4,854.12 feet a point having Coordinates of X = 1,656,654.02 and Y = 573,313.16, North 00 degrees 23 minutes 14 seconds West 5,176.99 feet to a point having Coordinates of X = 1,656,619.02 and Y = 578,490.03, and North 89 degrees 20 minutes 48 seconds West 1,545.28 feet to a point being the Southeast corner of said State Lease No. 20091 having Coordinates of X = 1,655,073.84 and Y = 578,507.65; thence North 792.35 feet to the point of beginning, **LESS AND EXCEPT** any and all portions of State Lease No. 9312 and Operating Agreement A0297, containing approximately **37.63 acres**, all as more particularly outlined on a plat on file in the Office of Mineral Resources, Department of Natural Resources. All bearings, distances and coordinates are based on Louisiana Coordinate System of 1927, (North or South Zone), where applicable.

NOTE: The above description of the Tract nominated for lease has been provided and corrected, where required, exclusively by the nomination party. Any mineral lease selected from this Tract and awarded by the Louisiana State Mineral and Energy Board shall be without warranty of any kind, either express, implied, or statutory, including, but not limited to, the implied warranties of merchantability and fitness for a particular purpose. Should the mineral lease awarded by the Louisiana State Mineral and Energy Board be subsequently modified, cancelled or abrogated due to the existence of conflicting leases, operating agreements, private claims or other future obligations or conditions which may affect all or any portion of the leased Tract, it shall not relieve the Lessee of the obligation to pay any bonus due thereon to the Louisiana State Mineral and Energy Board, nor shall the Louisiana State Mineral and Energy Board be obligated to refund any consideration paid by the Lessor prior to such modification, cancellation, or abrogation, including, but not limited to, bonuses, rentals and royalties.

Applicant: ALJMA ENERGY

Bidder	Cash Payment	Price/ Acre	Rental	Oil	Gas	Other

Legend

25040001

Active_Leases

Counties



0 5001,000 2,000 Feet



CADDO

P.O.B.

T15N - R12W

T14N - R12W

SL 20186

A0297

SL 18768

BAYOU PIERRE

SL 9312

SL 17217

SL 17216

DE SOTO

TRACT 45925 - Portion of Block 14, Main Pass Area, Revised, Plaquemines and St. Bernard Parishes, Louisiana

All of the lands now or formerly constituting the beds and bottoms of all water bodies of every nature and description as to which title is vested in the State of Louisiana, together with all islands arising therein and other lands formed by accretion or by reliction, where allowed by law, excepting tax adjudicated lands, and not presently under mineral lease on April 9, 2025, situated in Plaquemines and St. Bernard Parishes, Louisiana, and more particularly described as follows: Beginning at the Northwest corner of Block 14, Main Pass Area, Revised, having Coordinates of X = 2,591,100.00 and Y = 351,830.00; thence East 7,375.00 feet along the North line of said Block 14 to a point having Coordinates of X = 2,598,475.00 and Y = 351,830.00; thence South 13,490.00 feet to a point on the Northern boundary of State Lease No. 20344 having Coordinates of X = 2,598,475.00 and Y = 338,340.00; thence along the boundary of State Lease No. 20344 the following courses: West 828.00 Feet and South 1,260.00 feet to a point on the South line of said Block 14, having Coordinates of X = 2,597,647.00 and Y = 337,080.00; thence West 6,547.00 feet along the South line of said Block 14 to a point having Coordinates of X = 2,591,100.00 and Y = 337,080.00, said point being the Southwest corner of said Block 14; thence North 14,750.00 feet along the West line of said Block 14 to the point of beginning, containing **2,473.33 acres**, all as more particularly outlined on a plat on file in the Office of Mineral Resources, Department of Natural Resources. All bearings, distances and coordinates are based on Louisiana Coordinate System of 1927, (North or South Zone), where applicable.

NOTE: The above description of the Tract nominated for lease has been provided and corrected, where required, exclusively by the nomination party. Any mineral lease selected from this Tract and awarded by the Louisiana State Mineral and Energy Board shall be without warranty of any kind, either express, implied, or statutory, including, but not limited to, the implied warranties of merchantability and fitness for a particular purpose. Should the mineral lease awarded by the Louisiana State Mineral and Energy Board be subsequently modified, cancelled or abrogated due to the existence of conflicting leases, operating agreements, private claims or other future obligations or conditions which may affect all or any portion of the leased Tract, it shall not relieve the Lessee of the obligation to pay any bonus due thereon to the Louisiana State Mineral and Energy Board, nor shall the Louisiana State Mineral and Energy Board be obligated to refund any consideration paid by the Lessor prior to such modification, cancellation, or abrogation, including, but not limited to, bonuses, rentals and royalties.

NOTE: The State of Louisiana does hereby reserve, and this lease shall be subject to, the imprescriptible right of surface use in the nature of a servitude in favor of the Department of Natural Resources, including its Offices and Commissions, for the sole purpose of implementing, constructing, servicing and maintaining approved coastal zone management and/or restoration projects. Utilization of any and all rights derived under this lease by the mineral lessee, its agents, successors or assigns, shall not

interfere with nor hinder the reasonable surface use by the Department of Natural Resources, its Offices or Commissions, as herein above reserved.

NOTE: This tract is located in an area designated by the Louisiana Legislature or the Wildlife and Fisheries Commission as a Public Oyster Seed Ground, Reservation, or area of Calcasieu or Sabine Lake. Proposed projects occurring in these areas will be evaluated on a case by case basis by Louisiana Department of Wildlife & Fisheries. Modifications to proposed project features including, but not limited to, access routes, well sites, flowlines, and appurtenant structures maybe required by the Louisiana Department of Wildlife and Fisheries. In addition, compensatory mitigation will be required to offset unavoidable habitat impacts.

Applicant: CYPRESS ENERGY PARTNERS, LLC

Bidder	Cash Payment	Price/ Acre	Rental	Oil	Gas	Other

Legend

25040005

Blocks

Counties

CHANDELEUR
SOUND

MP0011

ST BERNARD

PLAQUEMINES

Main Pass
Area,
Revised

MP0014

GULF OF
MEXICO

MP0013

P.O.B.

0 1,250 2,500 5,000 Feet



TRACT 45926 - Portion of Block 14, Main Pass Area, Revised, Plaquemines and St. Bernard Parishes, Louisiana

All of the lands now or formerly constituting the beds and bottoms of all water bodies of every nature and description as to which title is vested in the State of Louisiana, together with all islands arising therein and other lands formed by accretion or by reliction, where allowed by law, excepting tax adjudicated lands, and not presently under mineral lease on April 9, 2025, situated in Plaquemines and St. Bernard Parishes, Louisiana, and more particularly described as follows: Beginning at the Northeast corner of Block 14, Main Pass Area, Revised, having Coordinates of X = 2,605,850.00 and Y = 351,830.00; thence South 14,750.00 feet along the East line of said Block 14 to a point having Coordinates of X = 2,605,850.00 and Y = 337,080.00, said point being the Southeast corner of Block 14; thence West 5,240.00 feet along the South line of said Block 14 to a point on the Eastern boundary of State Lease No. 20344 having Coordinates of X = 2,600,610.00 and Y = 337,080.00; thence along the boundary of State Lease No. 20344 the following courses: North 1,260.00 feet and West 2,135.00 feet to a point, having Coordinates of X = 2,598,475.00 and Y = 338,340.00; thence North 13,490.00 to a point on the Northern boundary of said Block 12 having Coordinates of X = 2,598,475.00 and Y = 351,830.00; thence East 7,375.00 feet along the North line of said Block 14 to the point of beginning, containing **2,435.53 acres**, all as more particularly outlined on a plat on file in the Office of Mineral Resources, Department of Natural Resources. All bearings, distances and coordinates are based on Louisiana Coordinate System of 1927, (North or South Zone), where applicable.

NOTE: The above description of the Tract nominated for lease has been provided and corrected, where required, exclusively by the nomination party. Any mineral lease selected from this Tract and awarded by the Louisiana State Mineral and Energy Board shall be without warranty of any kind, either express, implied, or statutory, including, but not limited to, the implied warranties of merchantability and fitness for a particular purpose. Should the mineral lease awarded by the Louisiana State Mineral and Energy Board be subsequently modified, cancelled or abrogated due to the existence of conflicting leases, operating agreements, private claims or other future obligations or conditions which may affect all or any portion of the leased Tract, it shall not relieve the Lessee of the obligation to pay any bonus due thereon to the Louisiana State Mineral and Energy Board, nor shall the Louisiana State Mineral and Energy Board be obligated to refund any consideration paid by the Lessor prior to such modification, cancellation, or abrogation, including, but not limited to, bonuses, rentals and royalties.

NOTE: The State of Louisiana does hereby reserve, and this lease shall be subject to, the imprescriptible right of surface use in the nature of a servitude in favor of the Department of Natural Resources, including its Offices and Commissions, for the sole purpose of implementing, constructing, servicing and maintaining approved coastal zone management and/or restoration projects. Utilization of any and all rights derived under this lease by the mineral lessee, its agents, successors or assigns, shall not

interfere with nor hinder the reasonable surface use by the Department of Natural Resources, its Offices or Commissions, as herein above reserved.

NOTE: This tract is located in an area designated by the Louisiana Legislature or the Wildlife and Fisheries Commission as a Public Oyster Seed Ground, Reservation, or area of Calcasieu or Sabine Lake. Proposed projects occurring in these areas will be evaluated on a case by case basis by Louisiana Department of Wildlife & Fisheries. Modifications to proposed project features including, but not limited to, access routes, well sites, flowlines, and appurtenant structures maybe required by the Louisiana Department of Wildlife and Fisheries. In addition, compensatory mitigation will be required to offset unavoidable habitat impacts.

Applicant: CYPRESS ENERGY PARTNERS, LLC

Bidder	Cash Payment	Price/ Acre	Rental	Oil	Gas	Other



ST BERNARD
CHANDELEUR
SOUND

MP0011

MP0010

P.O.B.

PLAQUEMINES

Main Pass
Area,
Revised

MP0015

GULF OF
MEXICO

MP0014

MP0023

SL 20344

Legend



25040003



Blocks



Counties



Active Leases

TRACT 45927 - Portion of Block 15, Main Pass Area, Revised, Plaquemines Parish, Louisiana

All of the lands now or formerly constituting the beds and bottoms of all water bodies of every nature and description as to which title is vested in the State of Louisiana, together with all islands arising therein and other lands formed by accretion or by reliction, where allowed by law, excepting tax adjudicated lands, and not presently under mineral lease on April 9, 2025, situated in Plaquemines Parish, Louisiana, and more particularly described as follows: Beginning at the Northwest corner of Block 15, Main Pass Area, Revised, having Coordinates of X = 2,605,850.00 and Y = 351,830.00; thence East 7,377.00 feet along the North line of said Block 15 to a point having Coordinates of X = 2,613,227.00 and Y = 351,830.00; thence South 14,750.00 feet to a point on the Southern boundary of said Block 15 having Coordinates of X = 2,613,227.00 and Y = 337,080.00; thence West 7,377.00 feet along the South line of said Block 15 to a point having Coordinates of X = 2,605,850.00 and Y = 337,080.00, said point being the Southwest corner of said Block 15; thence North 14,750.00 feet along the West line of said Block 15 to the point of beginning, containing **2,497.96 acres**, all as more particularly outlined on a plat on file in the Office of Mineral Resources, Department of Natural Resources. All bearings, distances and coordinates are based on Louisiana Coordinate System of 1927, (North or South Zone), where applicable.

NOTE: The above description of the Tract nominated for lease has been provided and corrected, where required, exclusively by the nomination party. Any mineral lease selected from this Tract and awarded by the Louisiana State Mineral and Energy Board shall be without warranty of any kind, either express, implied, or statutory, including, but not limited to, the implied warranties of merchantability and fitness for a particular purpose. Should the mineral lease awarded by the Louisiana State Mineral and Energy Board be subsequently modified, cancelled or abrogated due to the existence of conflicting leases, operating agreements, private claims or other future obligations or conditions which may affect all or any portion of the leased Tract, it shall not relieve the Lessee of the obligation to pay any bonus due thereon to the Louisiana State Mineral and Energy Board, nor shall the Louisiana State Mineral and Energy Board be obligated to refund any consideration paid by the Lessor prior to such modification, cancellation, or abrogation, including, but not limited to, bonuses, rentals and royalties.

NOTE: The State of Louisiana does hereby reserve, and this lease shall be subject to, the imprescriptible right of surface use in the nature of a servitude in favor of the Department of Natural Resources, including its Offices and Commissions, for the sole purpose of implementing, constructing, servicing and maintaining approved coastal zone management and/or restoration projects. Utilization of any and all rights derived under this lease by the mineral lessee, its agents, successors or assigns, shall not interfere with nor hinder the reasonable surface use by the Department of Natural Resources, its Offices or Commissions, as herein above reserved.

NOTE: This tract is located in an area designated by the Louisiana Legislature or the Wildlife and Fisheries Commission as a Public Oyster Seed Ground, Reservation, or area of Calcasieu or Sabine Lake. Proposed projects occurring in these areas will be evaluated on a case by case basis by Louisiana Department of Wildlife & Fisheries. Modifications to proposed project features including, but not limited to, access routes, well sites, flowlines, and appurtenant structures maybe required by the Louisiana Department of Wildlife and Fisheries. In addition, compensatory mitigation will be required to offset unavoidable habitat impacts.

Applicant: CYPRESS ENERGY PARTNERS, LLC

Bidder	Cash Payment	Price/ Acre	Rental	Oil	Gas	Other



Legend

25040006



Blocks



Counties



P.O.B.

ST BERNARD

CHANDELEUR
SOUND

MP0010

PLAQUEMINES

Main Pass
Area,
Revised

MP0015

GULF OF
MEXICO

MP0014

MP0022

TRACT 45928 - Portion of Block 15, Main Pass Area, Revised, Plaquemines Parish, Louisiana

All of the lands now or formerly constituting the beds and bottoms of all water bodies of every nature and description as to which title is vested in the State of Louisiana, together with all islands arising therein and other lands formed by accretion or by reliction, where allowed by law, excepting tax adjudicated lands, and not presently under mineral lease on April 9, 2025, situated in Plaquemines Parish, Louisiana, and more particularly described as follows: Beginning at the Northeast corner of Block 15, Main Pass Area, Revised, having Coordinates of X = 2,620,600.00 and Y = 351,830.00; thence South 14,750.00 feet along the East line of said Block 15 to a point having Coordinates of X = 2,620,600.00 and Y = 337,080.00, said point being the Southeast corner of said Block 15; thence West 7,373.00 feet along the South line of said Block 15 to a point having Coordinates of X = 2,613,227.00 and Y = 337,080.00; thence North 14,750.00 feet to a point on the Northern boundary of said Block 15 having Coordinates of X = 2,613,227.00 and Y = 351,830.00; thence East 7,373.00 feet along the North line of said Block 15 to the point of beginning, containing **2,496.61 acres**, all as more particularly outlined on a plat on file in the Office of Mineral Resources, Department of Natural Resources. All bearings, distances and coordinates are based on Louisiana Coordinate System of 1927, (North or South Zone), where applicable.

NOTE: The above description of the Tract nominated for lease has been provided and corrected, where required, exclusively by the nomination party. Any mineral lease selected from this Tract and awarded by the Louisiana State Mineral and Energy Board shall be without warranty of any kind, either express, implied, or statutory, including, but not limited to, the implied warranties of merchantability and fitness for a particular purpose. Should the mineral lease awarded by the Louisiana State Mineral and Energy Board be subsequently modified, cancelled or abrogated due to the existence of conflicting leases, operating agreements, private claims or other future obligations or conditions which may affect all or any portion of the leased Tract, it shall not relieve the Lessee of the obligation to pay any bonus due thereon to the Louisiana State Mineral and Energy Board, nor shall the Louisiana State Mineral and Energy Board be obligated to refund any consideration paid by the Lessor prior to such modification, cancellation, or abrogation, including, but not limited to, bonuses, rentals and royalties.

NOTE: The State of Louisiana does hereby reserve, and this lease shall be subject to, the imprescriptible right of surface use in the nature of a servitude in favor of the Department of Natural Resources, including its Offices and Commissions, for the sole purpose of implementing, constructing, servicing and maintaining approved coastal zone management and/or restoration projects. Utilization of any and all rights derived under this lease by the mineral lessee, its agents, successors or assigns, shall not interfere with nor hinder the reasonable surface use by the Department of Natural Resources, its Offices or Commissions, as herein above reserved.

NOTE: This tract is located in an area designated by the Louisiana Legislature or the Wildlife and Fisheries Commission as a Public Oyster Seed Ground, Reservation, or area of Calcasieu or Sabine Lake. Proposed projects occurring in these areas will be evaluated on a case by case basis by Louisiana Department of Wildlife & Fisheries. Modifications to proposed project features including, but not limited to, access routes, well sites, flowlines, and appurtenant structures maybe required by the Louisiana Department of Wildlife and Fisheries. In addition, compensatory mitigation will be required to offset unavoidable habitat impacts.

Applicant: CYPRESS ENERGY PARTNERS, LLC

Bidder	Cash Payment	Price/ Acre	Rental	Oil	Gas	Other



ST BERNARD

MP00010

CHANDELEUR
SOUND

MP00009

P.O.B.

GULF OF
MEXICO

MP00016

PLAQUEMINES

MP00015

Main Pass
Area, Revised

MP00022

Legend

25040004



Blocks



Counties

