

TRACT 45956 - Webster Parish, Louisiana

All of the lands now or formerly constituting the beds and bottoms of all water bodies of every nature and description as to which title is vested in the State of Louisiana, together with all islands arising therein and other lands formed by accretion or by reliction, where allowed by law, excepting tax adjudicated lands, and not presently under mineral lease on October 8, 2025, situated in Webster Parish, Louisiana, and more particularly described as follows: Beginning at the Northwest corner of State Lease No. 21962 having Coordinates of X = 1,730,679.86 and Y = 645,921.14; thence South 01 degrees 21 minutes 41 seconds West 2,557.84 feet along the west boundary of said State Lease No. 21962 to the most northern Northeast corner of State Lease No. 22237 having Coordinates of X = 1,730,619.09 and Y = 643,364.02; thence West 5,112.39 feet along the north boundary of said State Lease No. 22237 to its most north Northwest corner and a point on the east boundary of State Lease No. 19542, as amended having Coordinate of X = 1,725,506.71 and Y = 643,364.02; thence North 00 degrees 15 minutes 04 seconds East 2,606.87 feet along the east boundary of said State Lease No. 19542 to the Southeast corner of State Lease No. 21978 having Coordinates of X = 1,725,518.13 and Y = 645,970.86; thence North 00 degrees 04 minutes 26 seconds West 2,579.12 feet along the east boundary of said State Lease No. 21978 to a point having Coordinates of X = 1,725,514.81 and Y = 648,549.98; thence North 89 degrees 46 minutes 20 seconds East 5.19 feet to a point having Coordinates of X = 1,725,520.00 and Y = 648,550.00; thence North 89 degrees 46 minutes 20 seconds East 5,280.04 feet to a point having Coordinates of X = 1,730,800.00 and Y = 648,571.00; thence South 02 degrees 35 minutes 45 seconds West 2,652.59 feet to the point of beginning, (This tract includes only waterbottoms claimed and owned by the state and specifically excludes any land which the state may claim or own and to which the mineral rights are vested in the state), containing approximately **284 acres**, all as more particularly outlined on a plat on file in the Office of Mineral Resources, Department of Natural Resources. All bearings, distances and coordinates are based on Louisiana Coordinate System of 1927, (North or South Zone), where applicable.

NOTE: The above description of the Tract nominated for lease has been provided and corrected, where required, exclusively by the nomination party. Any mineral lease selected from this Tract and awarded by the Louisiana State Mineral and Energy Board shall be without warranty of any kind, either express, implied, or statutory, including, but not limited to, the implied warranties of merchantability and fitness for a particular purpose. Should the mineral lease awarded by the Louisiana State Mineral and Energy Board be subsequently modified, cancelled or abrogated due to the existence of conflicting leases, operating agreements, private claims or other future obligations or conditions which may affect all or any portion of the leased Tract, it shall not relieve the Lessee of the obligation to pay any bonus due thereon to the Louisiana State Mineral and Energy Board, nor shall the Louisiana State Mineral and Energy Board be obligated to refund any consideration paid by the Lessor prior to such modification, cancellation, or abrogation, including, but not limited to, bonuses, rentals and royalties.

NOTE: Bidders are hereby advised that certain areas in Lake Bistineau are the subject of dual claims to mineral ownership or mineral rights to certain accreted lands by the federal government and, therefore, title to such accreted lands is in dispute. Any bids accepted by the state mineral board which result in a state mineral lease being given places the successful bidder on notice that the State's title to that acreage, whether the whole or a part of the lease awarded, may be challenged. Accordingly, all leases awarded by the state mineral board are without warranty of any kind, either express, implied, or statutory, including, but not limited to merchantability and fitness for a particular purpose. Should the awarded lease be subsequently modified, cancelled, or abrogated in any way as a result of the above mentioned or any other challenge, or conflicting private claims which affect or may affect all or any portion of the leased tract, the successful bidder/Lessee, their successors, or assigns shall not be relieved of the obligation to pay any monies due prior to the modification, cancellation, or abrogation, including, but not limited to, bonus, rental and royalty, nor shall the State be obligated to refund those monies paid.

Applicant: MARK A. O'NEAL & ASSOCIATES, INC

Bidder	Cash Payment	Price/ Acre	Rental	Oil	Gas	Other



0 500 1,000 2,000 Feet

Legend



25100006

Active Leases



WEBSTER

T17N - R10W

P.O.B.

SL 21978

SL 19542

SL 22237

SL 21962

TRACT 45957 - Red River Parish, Louisiana

All of the lands now or formerly constituting the beds and bottoms of all water bodies of every nature and description as to which title is vested in the State of Louisiana, together with all islands arising therein and other lands formed by accretion or by reliction, where allowed by law, excepting tax adjudicated lands, and not presently under mineral lease on October 8, 2025, situated in Red River Parish, Louisiana, and more particularly described as follows: Beginning at the most southern Southeast corner of State Lease No. 22159 having Coordinates of X = 1,750,557.94 and Y = 461,215.44; thence along the boundaries of said State Lease No. 22159 the following courses: North 00 degrees 08 minutes 24 seconds East 4,113.11 feet to a point having Coordinates of X = 1,750,567.99 and Y = 465,328.55 and South 89 degrees 36 minutes 21 seconds East 4,085.02 feet to its most northern Southeast corner, the Southwest corner of State Lease No. 22083 and the Northwest corner of State Lease No. 22002 having Coordinates of X = 1,754,652.91 and Y = 465,300.45; thence South 00 degrees 12 minutes 47 seconds East 9,446.97 feet along the West boundary of said State Lease No. 22002 to a point on the North boundary line of State Lease No. 20404 having Coordinates of X = 1,754,688.06 and Y = 455,853.54; thence North 89 degrees 59 minutes 30 seconds West 4,143.23 feet along the North boundary line of said State Lease No. 20404 to its Northwest corner having Coordinates of X = 1,750,544.83 and Y = 455,854.15; thence North 00 degrees 08 minutes 24 seconds East 5,361.32 feet to the point of beginning, **LESS AND EXCEPT** any right, title, and interest in lands owned by and not under lease from the State of Louisiana, on behalf of the Red River Parish School Board, situated in Section 16, Township 11 North, Range 9 West, Red River Parish, Louisiana, contained within the above described tract, containing approximately **138 acres**, all as more particularly outlined on a plat on file in the Office of Mineral Resources, Department of Natural Resources. All bearings, distances and coordinates are based on Louisiana Coordinate System of 1927, (North or South Zone), where applicable.

NOTE: The above description of the Tract nominated for lease has been provided and corrected, where required, exclusively by the nomination party. Any mineral lease selected from this Tract and awarded by the Louisiana State Mineral and Energy Board shall be without warranty of any kind, either express, implied, or statutory, including, but not limited to, the implied warranties of merchantability and fitness for a particular purpose. Should the mineral lease awarded by the Louisiana State Mineral and Energy Board be subsequently modified, cancelled or abrogated due to the existence of conflicting leases, operating agreements, private claims or other future obligations or conditions which may affect all or any portion of the leased Tract, it shall not relieve the Lessee of the obligation to pay any bonus due thereon to the Louisiana State Mineral and Energy Board, nor shall the Louisiana State Mineral and Energy Board be obligated to refund any consideration paid by the Lessor prior to such modification, cancellation, or abrogation, including, but not limited to, bonuses, rentals and royalties.

Applicant: BARKER ENERGY

Bidder	Cash Payment	Price/ Acre	Rental	Oil	Gas	Other

Legend

25100001



Active Leases



RED RIVER

SL 22083

RED RIVER

T11N -
R9W

SL 22002

SL 20404

RED RIVER RED
OAK CUTOFF

SL 22159

P.O.B.

0 1,000 2,000 4,000 Feet



TRACT 45958 - Portion of Block 71, Chandeleur Sound Area, and Block 3, Main Pass Area, Revised, St. Bernard Parish, Louisiana

All of the lands now or formerly constituting the beds and bottoms of all water bodies of every nature and description as to which title is vested in the State of Louisiana, together with all islands arising therein and other lands formed by accretion or by reliction, where allowed by law, excepting tax adjudicated lands, and not presently under mineral lease on October 8, 2025, situated in St. Bernard Parish, Louisiana, and more particularly described as follows: Beginning at a point on the Southern boundary of State Lease No. 18194 having Coordinates of X = 2,613,720.02 and Y = 381,330.00; thence along the boundary of said State Lease No. 18194 the following courses: North 68 degrees 47 minutes 22 seconds West 50.42 feet to a point having Coordinates of X = 2,613,673.02 and Y = 381,348.26; North 58 degrees 06 minutes 56 seconds West 246.99 feet to a point having Coordinates of X = 2,613,463.30 and Y = 381,478.72; North 58 degrees 07 minutes 00 seconds West 52.69 feet to a point having Coordinates of X = 2,613,418.56 and Y = 381,506.55; North 68 degrees 16 minutes 28 seconds East 372.65 feet to a point having Coordinates of X = 2,613,764.74 and Y = 381,644.49; North 65 degrees 31 minutes 40 seconds East 73.60 feet to a point having Coordinates of X = 2,613,831.73 and Y = 381,674.98; Northwesterly along a curve to the right with a radius of 10,000.00 feet, an arc length of 598.93 feet and chord of North 80 degrees 31 minutes 23 seconds West 598.84 feet to a point having Coordinates of X = 2,613,241.06 and Y = 381,773.58; Northeasterly along a curve to the right with a radius of 4,000.00 feet, an arc length of 2,096.83 feet and chord of North 77 degrees 10 minutes 30 seconds East 2,072.90 feet to a point having Coordinates of X = 2,615,262.25 and Y = 382,233.71; Southeasterly along a curve to the right with a radius of 5,000.00 feet, an arc length of 2,158.27 feet and chord of South 80 degrees 53 minutes 23 seconds East 2,141.55 feet to a point having Coordinates of X = 2,617,376.79 and Y = 381,894.63; Southwesterly along a curve to the right with a radius of 8,900.00 feet, an arc length of 629.78 feet and chord of South 76 degrees 45 minutes 56 seconds West 629.65 feet to a point having Coordinates of X = 2,616,763.86 and Y = 381,750.48; and South 73 degrees 50 minutes 29 seconds East 776.21 feet to the most Westerly Northwest corner of State Lease No. 18043 having Coordinates of X = 2,617,509.41 and Y = 381,534.46; thence along the boundary of said State Lease No. 18043 the following courses: South 73 degrees 50 minutes 31 seconds East 472.51 feet to a point having Coordinates of X = 2,617,963.26 and Y = 381,402.97; South 70 degrees 28 minutes 32 seconds East 197.16 feet to a point having Coordinates of X = 2,618,149.08 and Y = 381,337.08; and South 76 degrees 38 minutes 28 seconds West 30.64 feet to a point on the South line of said Block 71, said point being a point on the North line of Block 3, Main Pass Area, having Coordinates of X = 2,618,119.27 and Y = 381,330.00; thence East 49.78 feet along the North line of said Block 3 to the Northwest corner of State Lease No. 17277 having Coordinates of X = 2,618,169.05 and Y = 381,330.00; thence along the boundary of said State Lease No. 17277 the following courses: South 70 degrees 28 minutes 32 seconds East 980.55 feet to a point having Coordinates of X = 2,619,093.22 and Y = 381,002.29; South 67 degrees 53 minutes 18 seconds East 585.45 feet to a point having Coordinates of X = 2,619,635.61 and Y =

380,781.92; South 38 degrees 40 minutes 42 seconds West 173.07 feet to a point having Coordinates of X = 2,619,527.45 and Y = 380,646.81; and South 60 degrees 11 minutes 12 seconds West 200.07 feet to a point having Coordinates of X = 2,619,353.86 and Y = 380,547.34; thence South 107.68 feet to a point having Coordinates of X = 2,619,353.86 and Y 380,439.66; thence South 68 degrees 13 minutes 36 seconds West 373.41 feet to a point having Coordinates of X = 2,619,007.09 and Y = 380,301.15; thence South 77 degrees 42 minutes 12 seconds West 405.22 feet to a point having Coordinates of X = 2,618,611.17 and Y = 380,214.85; thence South 84 degrees 43 minutes 02 seconds West 492.01 feet to a point having Coordinates of X = 2,618,121.25 and Y = 380,169.55; thence North 87 degrees 56 minutes 23 seconds West 418.07 feet to a point having Coordinates of X = 2,617,703.45 and Y = 380,184.58; thence North 84 degrees 27 minutes 48 seconds West 314.47 feet to a point having Coordinates of X 2,617,390.45 and Y = 380,214.92; thence North 77 degrees 03 minutes 24 seconds West 309.08 feet to a point having Coordinates of X = 2,617,089.22 and Y = 380,284.15; thence North 74 degrees 19 minutes 32 seconds West 299.74 feet to a point having Coordinates of X = 2,616,800.63 and Y = 380,365.13; thence North 68 degrees 24 minutes 15 seconds West 691.72 feet to a point having Coordinates of X = 2,616,157.47 and Y = 380,619.72; thence North 69 degrees 52 minutes 07 seconds West 408.02 feet to a point having Coordinates of X = 2,615,774.38 and Y = 380,760.15; thence North 66 degrees 28 minutes 38 seconds West 614.21 feet to a point having Coordinates of X = 2,615,211.21 and Y = 381,005.29; thence North 77 degrees 08 minutes 38 seconds West 186.07 feet to a point having Coordinates of X = 2,615,029.81 and Y = 381,046.69; thence North 88 degrees 29 minutes 59 seconds West 286.43 feet to a point having Coordinates of X = 2,614,743.47 and Y = 381,054.19; thence North 86 degrees 04 minutes 41 seconds West 509.67 feet to a point having Coordinates of X = 2,614,234.99 and Y = 381,089.05; thence North 80 degrees 39 minutes 42 seconds West 414.83 feet to a point having Coordinates of X = 2,613,825.66 and Y = 381,156.36; thence North 60 degrees 46 minutes 01 seconds West 121.06 feet to a point having Coordinates of X = 2,613,720.02 and Y = 381,215.48; thence North 114.52 feet to the point of beginning, containing **162.93 acres**, all as more particularly outlined on a plat on file in the Office of Mineral Resources, Department of Natural Resources. All bearings, distances and coordinates are based on Louisiana Coordinate System of 1927, (North or South Zone), where applicable.

NOTE: The above description of the Tract nominated for lease has been provided and corrected, where required, exclusively by the nomination party. Any mineral lease selected from this Tract and awarded by the Louisiana State Mineral and Energy Board shall be without warranty of any kind, either express, implied, or statutory, including, but not limited to, the implied warranties of merchantability and fitness for a particular purpose. Should the mineral lease awarded by the Louisiana State Mineral and Energy Board be subsequently modified, cancelled or abrogated due to the existence of conflicting leases, operating agreements, private claims or other future obligations or conditions which may affect all or any portion of the leased Tract, it shall not relieve the Lessee of the obligation to pay any bonus due thereon to the Louisiana State Mineral and Energy Board, nor shall the

Louisiana State Mineral and Energy Board be obligated to refund any consideration paid by the Lessor prior to such modification, cancellation, or abrogation, including, but not limited to, bonuses, rentals and royalties.

NOTE: The State of Louisiana does hereby reserve, and this lease shall be subject to, the imprescriptible right of surface use in the nature of a servitude in favor of the Department of Natural Resources, including its Offices and Commissions, for the sole purpose of implementing, constructing, servicing and maintaining approved coastal zone management and/or restoration projects. Utilization of any and all rights derived under this lease by the mineral lessee, its agents, successors or assigns, shall not interfere with nor hinder the reasonable surface use by the Department of Natural Resources, its Offices or Commissions, as herein above reserved.

NOTE: This tract is located in an area designated by the Louisiana Legislature or the Wildlife and Fisheries Commission as a Public Oyster Seed Ground, Reservation, or area of Calcasieu or Sabine Lake. Proposed projects occurring in these areas will be evaluated on a case by case basis by Louisiana Department of Wildlife & Fisheries. Modifications to proposed project features including, but not limited to, access routes, well sites, flowlines, and appurtenant structures maybe required by the Louisiana Department of Wildlife and Fisheries. In addition, compensatory mitigation will be required to offset unavoidable habitat impacts.

Applicant: ROBERT A. SCHROEDER, INC.

Bidder	Cash Payment	Price/ Acre	Rental	Oil	Gas	Other



Legend

- 25100003
- Blocks
- Counties

ST BERNARD

SL 18194

CS0071

Chandeleur Sound Area

CHANDELEUR SOUND

SL 18043

P.O.B.

BRETON SOUND

Main Pass Area, Revised

MP0003

SL 17277

TRACT 45959 - Portion of Block 32, Main Pass Area, Revised, Plaquemines Parish, Louisiana

All of the lands now or formerly constituting the beds and bottoms of all water bodies of every nature and description as to which title is vested in the State of Louisiana, together with all islands arising therein and other lands formed by accretion or by reliction, where allowed by law, excepting tax adjudicated lands, and not presently under mineral lease on October 8, 2025, situated in Plaquemines Parish, Louisiana, and more particularly described as follows: Beginning at a point having Coordinates of X = 2,620,600.00 and Y = 307,580.00, said point being the Northeast corner of Block 32, Main Pass Area, Revised; thence South 10,300.00 feet along the East line of said Block 32, Main Pass Area, Revised, to a point having Coordinates of X = 2,620,600.00 and Y = 297,280.00, said point also being the Northeast corner of State Lease No. 1958, as amended; thence West 14,750.00 feet along the North line of said State Lease No. 1958, as amended, to a point having Coordinates of X = 2,605,850.00 and Y = 297,280.00, said point being the Northwest corner of said State Lease No. 1958, as amended, said point also being on the West line of said Block 32, Main Pass Area, Revised; thence North 8,800.00 feet along said West line of said Block 32, Main Pass Area, Revised, to a point having Coordinates of X = 2,605,850.00 and Y = 306,080.00; thence North 45 degrees 00 minutes 00 seconds East 2,121.32 feet to a point having Coordinates of X = 2,607,350.00 and Y = 307,580.00, said point being on the North line of said Block 32, Main Pass Area, Revised; thence East 13,250.00 feet along said North line of said Block 32, Main Pass Area, Revised, to the point of beginning, **LESS AND EXCEPT** all that portion of the above described tract situated within the surface boundaries of State Lease No. 22175 and being more particularly described as follows: Beginning at a point within Block 32, Main Pass Area, Revised, said point having Coordinates of point X = 2,619,555.00 and Y = 306,526.00; thence South 7,350.67 feet to a point having Coordinates of X = 2,619,555.00 and Y = 299,175.83; thence West 8,191.90 feet to a point having Coordinates of X = 2,611,363.10 and Y = 299,175.83; thence North 1,911.50 feet to a point having Coordinates of X = 2,611,363.10 and Y = 301,087.33; thence North 50 degrees 51 minutes 38 seconds East 8,617.08 feet to a point having Coordinates of X = 2,618,046.62 and Y = 306,526.50; thence East 1,508.38 feet to the point of beginning, containing approximately 965.10 acres. The above described tract contains approximately **2,496.79 acres**, all as more particularly outlined on a plat on file in the Office of Mineral Resources, Department of Natural Resources. All bearings, distances and coordinates are based on Louisiana Coordinate System of 1927, (North or South Zone), where applicable.

NOTE: The above description of the Tract nominated for lease has been provided and corrected, where required, exclusively by the nomination party. Any mineral lease selected from this Tract and awarded by the Louisiana State Mineral and Energy Board shall be without warranty of any kind, either express, implied, or statutory, including, but not limited to, the implied warranties of merchantability and fitness for a particular purpose. Should the mineral lease awarded by the Louisiana State Mineral and Energy Board be

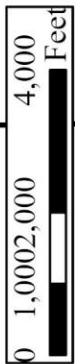
subsequently modified, cancelled or abrogated due to the existence of conflicting leases, operating agreements, private claims or other future obligations or conditions which may affect all or any portion of the leased Tract, it shall not relieve the Lessee of the obligation to pay any bonus due thereon to the Louisiana State Mineral and Energy Board, nor shall the Louisiana State Mineral and Energy Board be obligated to refund any consideration paid by the Lessor prior to such modification, cancellation, or abrogation, including, but not limited to, bonuses, rentals and royalties.

NOTE: The State of Louisiana does hereby reserve, and this lease shall be subject to, the imprescriptible right of surface use in the nature of a servitude in favor of the Department of Natural Resources, including its Offices and Commissions, for the sole purpose of implementing, constructing, servicing and maintaining approved coastal zone management and/or restoration projects. Utilization of any and all rights derived under this lease by the mineral lessee, its agents, successors or assigns, shall not interfere with nor hinder the reasonable surface use by the Department of Natural Resources, its Offices or Commissions, as herein above reserved.

NOTE: This tract is located in an area designated by the Louisiana Legislature or the Wildlife and Fisheries Commission as a Public Oyster Seed Ground, Reservation, or area of Calcasieu or Sabine Lake. Proposed projects occurring in these areas will be evaluated on a case by case basis by Louisiana Department of Wildlife & Fisheries. Modifications to proposed project features including, but not limited to, access routes, well sites, flowlines, and appurtenant structures maybe required by the Louisiana Department of Wildlife and Fisheries. In addition, compensatory mitigation will be required to offset unavoidable habitat impacts.

Applicant: ROBERT A. SCHROEDER, INC.

Bidder	Cash Payment	Price/ Acre	Rental	Oil	Gas	Other



PLAQUEMINES

MP0025

Main Pass
Area, Revised

Legend

25100004

Blocks

Active Leases

P.O.B.

MP0031

MP0033

MP0032

SL 1958

SL 22175

TRACT 45960 - Lafourche Parish, Louisiana

All of the lands now or formerly constituting the beds and bottoms of all water bodies of every nature and description as to which title is vested in the State of Louisiana, together with all islands arising therein and other lands formed by accretion or by reliction, where allowed by law, excepting tax adjudicated lands, and not presently under mineral lease on October 8, 2025, situated in Lafourche Parish, Louisiana, and more particularly described as follows: Beginning at a point having Coordinates of X = 2,337,674.27 and Y = 221,619.33; thence East approximately 8,422 feet to a point on the west boundary of State Lease No. 1908, as amended; thence along the boundaries of said State Lease No. 1908 the following courses: Southerly approximately 4,107 feet to a point and Easterly approximately 3,767 feet to a point that is North 00 degrees 46 minutes 13 seconds West approximately 5,426 feet of a point having Coordinates of X = 2,350,150.13 and Y = 212,105.96; thence South 00 degrees 46 minutes 13 seconds East approximately 5,426 feet to a point having Coordinates of X = 2,350,150.13 and Y = 212,105.96; thence West 12,347.97 feet to a point having Coordinates of X = 2,337,802.16 and Y = 212,105.96; thence North 00 degrees 46 minutes 13 seconds West 9,514.23 feet to the point of beginning, **LESS AND EXCEPT** in its entirety State Lease No. 22239, as amended, more particularly described as follows: State Lease No. 22239: Beginning at a point having Coordinates of X = 2,337,674.27 and Y = 221,619.33; thence South 19 degrees 40 minutes 56 seconds East 3,193.94 feet to the point of beginning of said State Lease No. 22239 having Coordinates of X = 2,338,750.00 and Y = 218,612.00; thence South 83 degrees 24 minutes 59 seconds East 7,021.30 feet to a point having Coordinates of X = 2,345,725.00 and Y = 217,807.00; thence South 1,648.00 feet to a point having Coordinates of X = 2,345,725.00 and Y = 216,159.00; thence South 79 degrees 24 minutes 38 seconds West 7,095.85 feet to a point having Coordinates of X = 2,338,750.00 and Y = 214,855.00; thence North 3,757.00 feet to the point of beginning, containing approximately 278 acres, **LESS AND EXCEPT** any right, title, and interest in lands owned by and not under lease from the State of Louisiana, on behalf of the Lafourche Parish School Board, situated in Section 16, Township 21 South, Range 22 East, Lafourche Parish, Louisiana, contained within the above described tract, containing approximately **753 acres**, all as more particularly outlined on a plat on file in the Office of Mineral Resources, Department of Natural Resources. All bearings, distances and coordinates are based on Louisiana Coordinate System of 1927, (North or South Zone), where applicable.

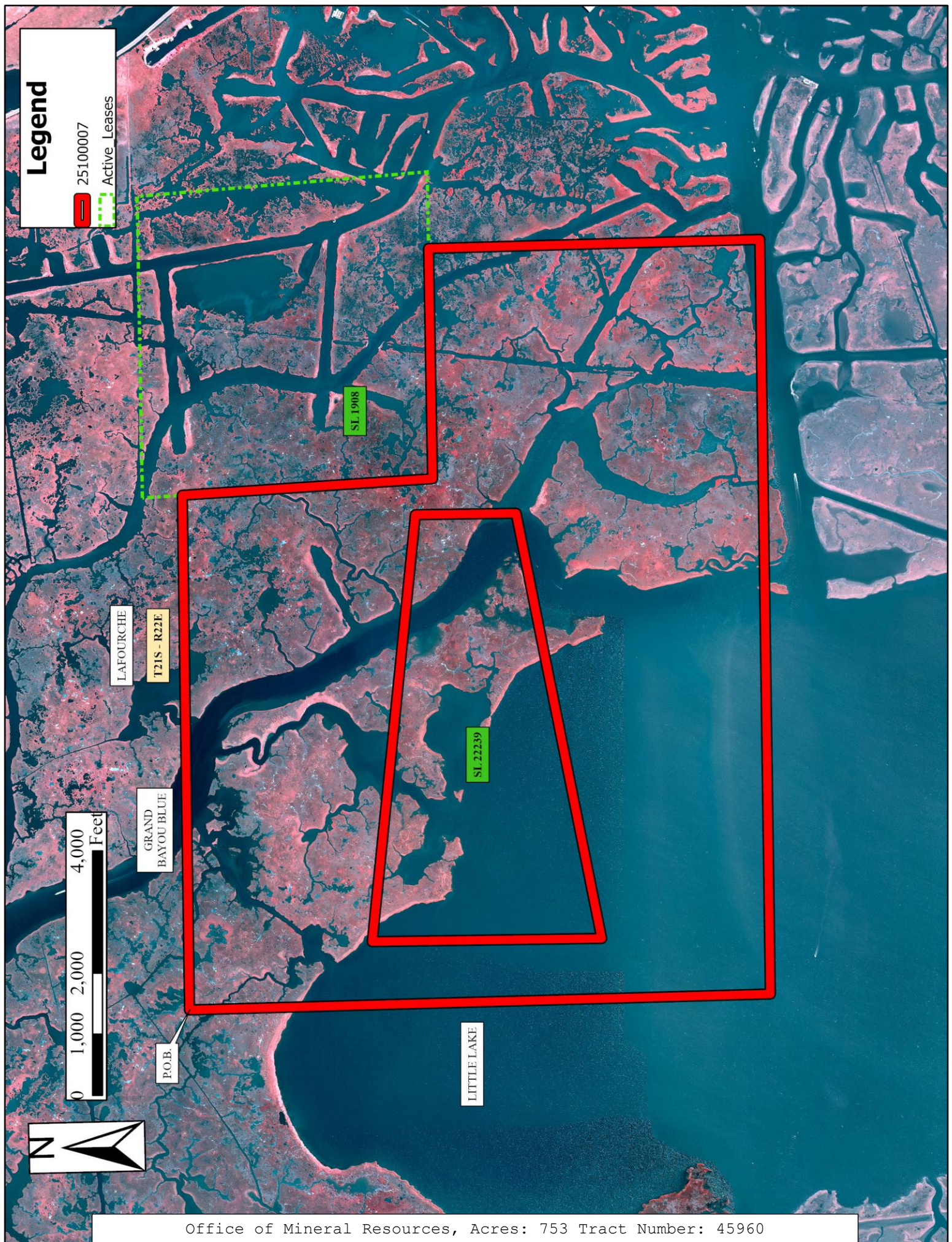
NOTE: The above description of the Tract nominated for lease has been provided and corrected, where required, exclusively by the nomination party. Any mineral lease selected from this Tract and awarded by the Louisiana State Mineral and Energy Board shall be without warranty of any kind, either express, implied, or statutory, including, but not limited to, the implied warranties of merchantability and fitness for a particular purpose. Should the mineral lease awarded by the Louisiana State Mineral and Energy Board be subsequently modified, cancelled or abrogated due to the existence of conflicting leases, operating agreements, private claims or other future obligations or conditions which may affect all or any portion of the leased

Tract, it shall not relieve the Lessee of the obligation to pay any bonus due thereon to the Louisiana State Mineral and Energy Board, nor shall the Louisiana State Mineral and Energy Board be obligated to refund any consideration paid by the Lessor prior to such modification, cancellation, or abrogation, including, but not limited to, bonuses, rentals and royalties.

NOTE: The State of Louisiana does hereby reserve, and this lease shall be subject to, the imprescriptible right of surface use in the nature of a servitude in favor of the Department of Natural Resources, including its Offices and Commissions, for the sole purpose of implementing, constructing, servicing and maintaining approved coastal zone management and/or restoration projects. Utilization of any and all rights derived under this lease by the mineral lessee, its agents, successors or assigns, shall not interfere with nor hinder the reasonable surface use by the Department of Natural Resources, its Offices or Commissions, as herein above reserved.

Applicant: EMERY ENERGY

Bidder	Cash Payment	Price/ Acre	Rental	Oil	Gas	Other



Office of Mineral Resources, Acres: 753 Tract Number: 45960

TRACT 45961 - Lafourche Parish, Louisiana

All of the lands now or formerly constituting the beds and bottoms of all water bodies of every nature and description as to which title is vested in the State of Louisiana, together with all islands arising therein and other lands formed by accretion or by reliction, where allowed by law, excepting tax adjudicated lands, and not presently under mineral lease on October 8, 2025, situated in Lafourche Parish, Louisiana, and more particularly described as follows: Beginning at a point having Coordinates of X = 2,350,150.13 and Y = 212,105.96; thence Northerly approximately 5,426 feet to a point on the south boundary of State Lease No. 1908, as amended; thence along the boundaries of said State Lease No. 1908 the following courses: Easterly approximately 1,255 feet to a point and Northerly approximately 4,094 feet to a point that is West approximately 7,909 feet of a point having Coordinates of X = 2,358,953.69 and Y = 221,619.33; thence East approximately 7,909 feet to a point having Coordinates of X = 2,358,953.69 and Y = 221,619.33; thence South 01 degrees 21 minutes 39 seconds East 9,516.05 feet to a point having Coordinates of X = 2,359,179.70 and Y = 212,105.96; thence West 9,029.57 feet to the point of beginning, **LESS AND EXCEPT** any right, title, and interest in lands owned by and not under lease from the State of Louisiana, on behalf of the Lafourche Parish School Board, situated in Section 16, Township 21 South, Range 22 East, Lafourche Parish, Louisiana, contained within the above described tract, containing approximately **102 acres**, all as more particularly outlined on a plat on file in the Office of Mineral Resources, Department of Natural Resources. All bearings, distances and coordinates are based on Louisiana Coordinate System of 1927, (North or South Zone), where applicable.

NOTE: The above description of the Tract nominated for lease has been provided and corrected, where required, exclusively by the nomination party. Any mineral lease selected from this Tract and awarded by the Louisiana State Mineral and Energy Board shall be without warranty of any kind, either express, implied, or statutory, including, but not limited to, the implied warranties of merchantability and fitness for a particular purpose. Should the mineral lease awarded by the Louisiana State Mineral and Energy Board be subsequently modified, cancelled or abrogated due to the existence of conflicting leases, operating agreements, private claims or other future obligations or conditions which may affect all or any portion of the leased Tract, it shall not relieve the Lessee of the obligation to pay any bonus due thereon to the Louisiana State Mineral and Energy Board, nor shall the Louisiana State Mineral and Energy Board be obligated to refund any consideration paid by the Lessor prior to such modification, cancellation, or abrogation, including, but not limited to, bonuses, rentals and royalties.

NOTE: The State of Louisiana does hereby reserve, and this lease shall be subject to, the imprescriptible right of surface use in the nature of a servitude in favor of the Department of Natural Resources, including its Offices and Commissions, for the sole purpose of implementing, constructing, servicing and maintaining approved coastal zone management and/or restoration projects. Utilization of any and all rights derived under this

lease by the mineral lessee, its agents, successors or assigns, shall not interfere with nor hinder the reasonable surface use by the Department of Natural Resources, its Offices or Commissions, as herein above reserved.

Applicant: EMERY ENERGY

Bidder	Cash Payment	Price/ Acre	Rental	Oil	Gas	Other

Legend

25100008

Active Leases



T21S - R22E

LAFOURCHE

BAYOU
LAFOURCHE

SL 1908

BAYOU
PIERRE
ET LEE

P.O.B.

0 1,000 2,000 4,000 Feet



TRACT 45962 - Lafourche Parish, Louisiana

All of the lands now or formerly constituting the beds and bottoms of all water bodies of every nature and description as to which title is vested in the State of Louisiana, together with all islands arising therein and other lands formed by accretion or by reliction, where allowed by law, excepting tax adjudicated lands, and not presently under mineral lease on October 8, 2025, situated in Lafourche Parish, Louisiana, and more particularly described as follows: Beginning at a point having Coordinates of X = 2,337,802.16 and Y = 212,105.96; thence East 12,347.97 feet to a point having Coordinates of X = 2,350,150.13 and Y = 212,105.96; thence South 00 degrees 46 minutes 13 seconds East 11,194.46 feet to a point having Coordinates of X = 2,350,300.60 and Y = 200,912.51; thence West 12,347.97 feet to a point having Coordinates of X = 2,337,952.63 and Y = 200,912.51; thence North 00 degrees 46 minutes 13 seconds West 11,194.46 feet to the point of beginning, **LESS AND EXCEPT** in its entirety State Lease No. 22221, as amended, more particularly described as follows: State Lease No. 22221: Beginning at a point having Coordinates of X = 2,337,802.16 and Y = 212,105.96; thence South 17 degrees 38 minutes 43 seconds East 4,729.97 feet to the point of beginning of said State Lease No. 22221 having Coordinates of X = 2,339,235.93 and Y = 207,598.53; thence North 88 degrees 27 minutes 15 seconds East 5,872.00 feet to a point having Coordinates of X = 2,345,105.79 and Y = 207,756.94; thence South 33 degrees 26 minutes 44 seconds West 2,568.97 feet to a point having Coordinates of X = 2,343,689.92 and Y = 205,613.36; thence South 88 degrees 27 minutes 15 seconds West 4,358.00 feet to a point having Coordinates of X = 2,339,333.50 and Y = 205,495.79; thence North 02 degrees 39 minutes 25 seconds West 2,105.00 feet to the point of beginning, containing approximately 216.826 acres. The above nominated tract contains approximately **1,977 acres**, all as more particularly outlined on a plat on file in the Office of Mineral Resources, Department of Natural Resources. All bearings, distances and coordinates are based on Louisiana Coordinate System of 1927, (North or South Zone), where applicable.

NOTE: The above description of the Tract nominated for lease has been provided and corrected, where required, exclusively by the nomination party. Any mineral lease selected from this Tract and awarded by the Louisiana State Mineral and Energy Board shall be without warranty of any kind, either express, implied, or statutory, including, but not limited to, the implied warranties of merchantability and fitness for a particular purpose. Should the mineral lease awarded by the Louisiana State Mineral and Energy Board be subsequently modified, cancelled or abrogated due to the existence of conflicting leases, operating agreements, private claims or other future obligations or conditions which may affect all or any portion of the leased Tract, it shall not relieve the Lessee of the obligation to pay any bonus due thereon to the Louisiana State Mineral and Energy Board, nor shall the Louisiana State Mineral and Energy Board be obligated to refund any consideration paid by the Lessor prior to such modification, cancellation, or abrogation, including, but not limited to, bonuses, rentals and royalties.

NOTE: The State of Louisiana does hereby reserve, and this lease shall be subject to, the imprescriptible right of surface use in the nature of a servitude in favor of the Department of Natural Resources, including its Offices and Commissions, for the sole purpose of implementing, constructing, servicing and maintaining approved coastal zone management and/or restoration projects. Utilization of any and all rights derived under this lease by the mineral lessee, its agents, successors or assigns, shall not interfere with nor hinder the reasonable surface use by the Department of Natural Resources, its Offices or Commissions, as herein above reserved.

Applicant: EMERY ENERGY

Bidder	Cash Payment	Price/ Acre	Rental	Oil	Gas	Other



Legend

25100009

Active Leases

LAFOURCHE

T21S - R22E

HACKBERRY BAY

P.O.B.

LITTLE LAKE

SL 22221



TRACT 45963 - Lafourche Parish, Louisiana

All of the lands now or formerly constituting the beds and bottoms of all water bodies of every nature and description as to which title is vested in the State of Louisiana, together with all islands arising therein and other lands formed by accretion or by reliction, where allowed by law, excepting tax adjudicated lands, and not presently under mineral lease on October 8, 2025, situated in Lafourche Parish, Louisiana, and more particularly described as follows: Beginning at a point having Coordinates of X = 2,350,150.13 and Y = 212,105.96; thence East 9,029.57 feet to a point having Coordinates of X = 2,359,179.70 and Y = 212,105.96; thence South 01 degrees 21 minutes 39 seconds East 11,196.61 feet to a point having Coordinates of X = 2,359,445.62 and Y = 200,912.51; thence West 9,145.02 feet to a point having Coordinates of X = 2,350,300.60 and Y = 200,912.51; thence North 00 degrees 46 minutes 13 seconds West 11,194.46 feet to the point of beginning, **LESS AND EXCEPT** in its entirety State Lease No. 22121, as amended, more particularly described as follows: State Lease No. 22121: Beginning at a point having Coordinates of X = 2,350,150.13 and Y = 212,105.96; thence South 19 degrees 21 minutes 12 seconds East 9,533.69 feet to the point of beginning of said State Lease No. 22121 having Coordinates of X = 2,353,309.54 and Y = 203,111.00; thence East 1,093.82 feet to a point on the northern boundary of the CAILLOUET RA SUA, adopted by the Office of Conservation Order No. 617 XX, having Coordinates of X = 2,354,403.35 and Y = 203,111.00; thence along the northern boundary of said CAILLOUET RA SUA the following courses: South 68 degrees 00 minutes 16 seconds East 345.70 feet to a point having Coordinates of X = 2,354,723.89 and Y = 202,981.52, North 88 degrees 26 minutes 28 seconds East 1,144.96 feet to a point having Coordinates of X = 2,355,868.43 and Y = 203,012.67 and North 88 degrees 21 minutes 00 seconds East 524.65 feet to a point having Coordinates of X = 2,356,392.86 and Y = 203,027.78; thence South 37 degrees 39 minutes 03 seconds West 1,350.60 feet to a point on the southern boundary of said CAILLOUET RA SUA, having Coordinates of X = 2,355,567.85 and Y = 201,958.44; thence along the southern boundary of said CAILLOUET RA SUA the following courses: South 88 degrees 08 minutes 37 seconds West 776.64 feet to a point having Coordinates of X = 2,354,791.62 and Y = 201,933.29, North 62 degrees 13 minutes 49 seconds West 1,290.06 feet to a point having Coordinates of X = 2,353,650.14 and Y = 202,534.35 and South 88 degrees 26 minutes 28 seconds West 823.85 feet to a point having Coordinates of X = 2,352,826.59 and Y = 202,511.94; thence North 38 degrees 52 minutes 29 seconds East 769.49 feet to the point of beginning, containing approximately 11.162 acres. The above nominated tract contains approximately **142 acres**, all as more particularly outlined on a plat on file in the Office of Mineral Resources, Department of Natural Resources. All bearings, distances and coordinates are based on Louisiana Coordinate System of 1927, (North or South Zone), where applicable.

NOTE: The above description of the Tract nominated for lease has been provided and corrected, where required, exclusively by the nomination party. Any mineral lease selected from this Tract and awarded by the Louisiana State Mineral and Energy Board shall be without warranty of any kind, either express, implied, or statutory, including, but not limited to, the implied

warranties of merchantability and fitness for a particular purpose. Should the mineral lease awarded by the Louisiana State Mineral and Energy Board be subsequently modified, cancelled or abrogated due to the existence of conflicting leases, operating agreements, private claims or other future obligations or conditions which may affect all or any portion of the leased Tract, it shall not relieve the Lessee of the obligation to pay any bonus due thereon to the Louisiana State Mineral and Energy Board, nor shall the Louisiana State Mineral and Energy Board be obligated to refund any consideration paid by the Lessor prior to such modification, cancellation, or abrogation, including, but not limited to, bonuses, rentals and royalties.

NOTE: The State of Louisiana does hereby reserve, and this lease shall be subject to, the imprescriptible right of surface use in the nature of a servitude in favor of the Department of Natural Resources, including its Offices and Commissions, for the sole purpose of implementing, constructing, servicing and maintaining approved coastal zone management and/or restoration projects. Utilization of any and all rights derived under this lease by the mineral lessee, its agents, successors or assigns, shall not interfere with nor hinder the reasonable surface use by the Department of Natural Resources, its Offices or Commissions, as herein above reserved.

Applicant: EMERY ENERGY

Bidder	Cash Payment	Price/ Acre	Rental	Oil	Gas	Other

Legend

25100010



Active Leases



0 1,000 2,000 4,000 Feet

P.O.B.

LAFOURCHE

T21S - R22E

T22S - R22E

BAYOU
LAFOURCHE

SL 22121