

TRACT 45964 - Caddo Parish, Louisiana

A certain Tract of land, excluding the beds and bottoms of all navigable waters, belonging to and not presently under mineral lease from Caddo Levee District on October 8, 2025, being more fully described as follows: That certain tract or parcel of land situated in Section 23, Township 22 North, Range 15 West, Caddo Parish, Louisiana, containing 40.00 acres, more or less, being more particularly described as the Southwest Quarter of the Northwest Quarter (SW/4 of NW/4), less and excepting 1.3 acres, more or less being more particularly described in that certain Exchange Deed, recorded June 15, 2004 under Instrument Number 1923992, of the Conveyance Records of Caddo Parish, Louisiana, leaving a balance of **38.70 acres**, all as more particularly outlined on a plat on file in the Office of Mineral Resources, Department of Natural Resources. The description is based on information provided by the State Agency regarding location and ownership of surface and mineral rights. All bearings, distances and coordinates, if applicable, are based on Louisiana Coordinate System of 1927, (North or South Zone).

NOTE: The above description of the Tract nominated for lease has been provided and corrected, where required, exclusively by the nomination party. Any mineral lease selected from this Tract and awarded by the Louisiana State Mineral and Energy Board shall be without warranty of any kind, either express, implied, or statutory, including, but not limited to, the implied warranties of merchantability and fitness for a particular purpose. Should the mineral lease awarded by the Louisiana State Mineral and Energy Board be subsequently modified, cancelled or abrogated due to the existence of conflicting leases, operating agreements, private claims or other future obligations or conditions which may affect all or any portion of the leased Tract, it shall not relieve the Lessee of the obligation to pay any bonus due thereon to the Louisiana State Mineral and Energy Board, nor shall the Louisiana State Mineral and Energy Board be obligated to refund any consideration paid by the Lessor prior to such modification, cancellation, or abrogation, including, but not limited to, bonuses, rentals and royalties.

NOTE: The Caddo Levee District will require a minimum bonus of \$100.00 per acre and a minimum royalty of not less than 20%.

NOTE: The Caddo Levee District requires that the royalty to be paid shall be "cost-free".

Applicant: CYPRESS ENERGY PARTNERS, LLC to Agency and by Resolution from the Caddo Levee District authorizing the Mineral Board to act in its behalf

Bidder	Cash Payment	Price/ Acre	Rental	Oil	Gas	Other

Legend

25100002

CADDO

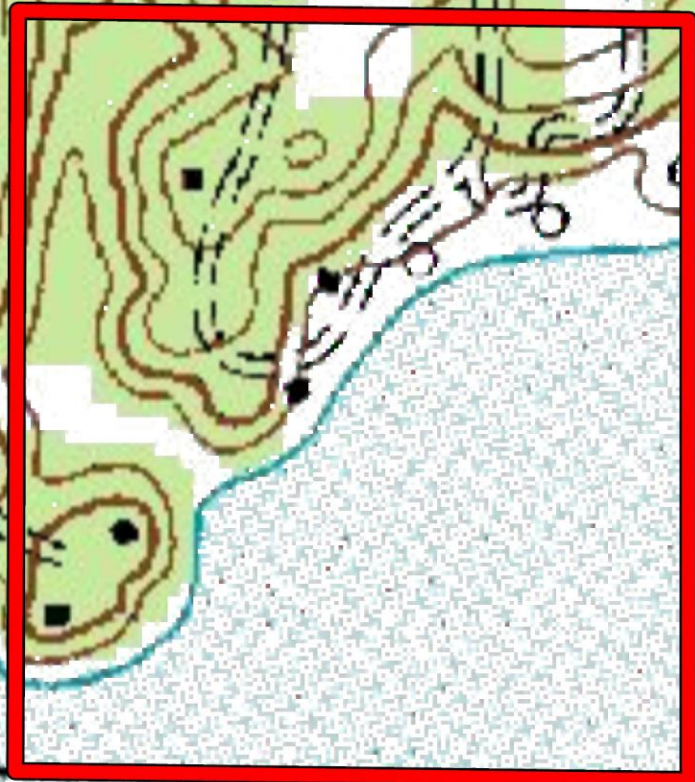
T22N - R15W

23

229

22

0 125 250 500 Feet



TRACT 45965 - Webster Parish, Louisiana

A certain Tract of land, excluding the beds and bottoms of all navigable waters, belonging to and not presently under mineral lease from La Dept. Of Culture, Recreation And Tourism on October 8, 2025, being more fully described as follows: Beginning at the Northwest corner of State Lease No. 21962 having Coordinates of X = 1,730,679.86 and Y = 645,921.14; thence South 01 degrees 21 minutes 41 seconds West 2,557.84 feet along the west boundary of said State Lease No. 21962 to the most northern Northeast corner of State Lease No. 22237 having Coordinates of X = 1,730,619.09 and Y = 643,364.02; thence West 5,112.39 feet along the north boundary of said State Lease No. 22237 to its most north Northwest corner and a point on the east boundary of State Lease No. 19542, as amended having Coordinate of X = 1,725,506.71 and Y = 643,364.02; thence North 00 degrees 15 minutes 04 seconds East 2,606.87 feet along the east boundary of said State Lease No. 19542 to the Southeast corner of State Lease No. 21978 having Coordinates of X = 1,725,518.13 and Y = 645,970.86; thence North 00 degrees 04 minutes 26 seconds West 2,579.12 feet along the east boundary of said State Lease No. 21978 to a point having Coordinates of X = 1,725,514.81 and 648,549.98; thence North 89 degrees 46 minutes 20 seconds East 5.19 feet to a point having Coordinates of X = 1,725,520.00 and Y = 648,550.00; thence North 89 degrees 46 minutes 20 seconds East 5,280.04 feet to a point having Coordinates of X = 1,730,800.00 and Y = 648,571.00; thence South 02 degrees 35 minutes 45 seconds West 2,652.59 feet to the point of beginning, containing approximately **281 acres**, all as more particularly outlined on a plat on file in the Office of Mineral Resources, Department of Natural Resources. The description is based on information provided by the State Agency regarding location and ownership of surface and mineral rights. All bearings, distances and coordinates, if applicable, are based on Louisiana Coordinate System of 1927, (North or South Zone) .

NOTE: The above description of the Tract nominated for lease has been provided and corrected, where required, exclusively by the nomination party. Any mineral lease selected from this Tract and awarded by the Louisiana State Mineral and Energy Board shall be without warranty of any kind, either express, implied, or statutory, including, but not limited to, the implied warranties of merchantability and fitness for a particular purpose. Should the mineral lease awarded by the Louisiana State Mineral and Energy Board be subsequently modified, cancelled or abrogated due to the existence of conflicting leases, operating agreements, private claims or other future obligations or conditions which may affect all or any portion of the leased Tract, it shall not relieve the Lessee of the obligation to pay any bonus due thereon to the Louisiana State Mineral and Energy Board, nor shall the Louisiana State Mineral and Energy Board be obligated to refund any consideration paid by the Lessor prior to such modification, cancellation, or abrogation, including, but not limited to, bonuses, rentals and royalties.

NOTE: The Lessee shall not enter nor conduct any activity on the property without prior written consent of the Lessor.

Applicant: MARK A. O'NEAL & ASSOCIATES, INC. to Agency and by Resolution from the La Dept. Of Culture, Recreation And Tourism authorizing the Mineral Board to act in its behalf

Bidder	Cash Payment	Price/ Acre	Rental	Oil	Gas	Other

Legend

25100005



Active Leases

0 500 1,000 2,000 Feet



WEBSTER

LAKE
BISTINEAU

P.O.B.

SL 21962

SL 22237

SL 21978

T17N - R10W

SL 19542