

LOUISIANA ENERGY FACTS

Louisiana Department of Natural Resources
Technology Assessment Division

www.dnr.louisiana.gov/tad

INSIDE

Highlights
page 1

Louisiana Crude Oil and Condensate Production
page 1

Current Oil & Gas Data
page 2

2010 Louisiana State Producing Oil Wells, By Production Rate
page 3

2010 Louisiana State Producing Gas Wells, By Production Rate
page 3

Quick Facts
page 4

Featured Articles and Inserts
[Selected Louisiana Energy Statistics](#)



Department of Natural Resources
Scott A. Angelle, Secretary

Technology Assessment Division
Christopher P. Knotts, P.E.,
Director
Manuel Lam, Senior Analyst

617 North Third Street
Baton Rouge, LA 70802

Tel. (225) 342-1270
Fax. (225) 242-1397
Email: techasmt@la.gov
www.dnr.louisiana.gov/tad

Highlights

JULY 2011

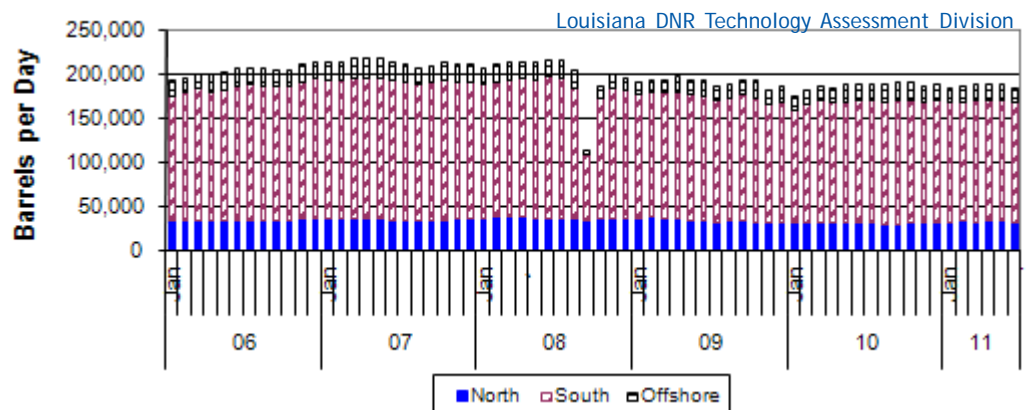
The Light Louisiana Sweet (LLS) crude oil spot price is holding steady around \$110 per barrel. On June 15, 2011, the price for a barrel of oil was \$112.42. On June 23, 2011, the industrialized nations agreed to release oil from emergency stockpiles for the third time in history. This pushed the LLS crude oil price down to \$109.77 per barrel and the price bottomed out on June 27, 2011 at \$103.93 per barrel. By the end of June 2011, however, the LLS crude oil price recovered to \$108.57 per barrel. The quick rebound in price was caused by Tropical Storm Arlene, the strengthening of the euro after implementation of austerity measures in Greece, speculation that OPEC may reduce output in response to IEA's release of oil from reserves, and a U.S. government report stating that supplies dropped almost three times more than expected.

Louisiana Crude Oil and Condensate Production**, Excluding Federal OCS

Month	Barrels/Day						% Change	
	2006	2007	2008	2009	2010	2011	09/10	10/11
January	191,403	211,396	206,298	189,585 ²	174,254 ²	183,499		5.31%
February	194,063	211,535	209,586	192,401 ²	181,756 ²	184,214		1.35%
March	199,617	216,410	211,533	192,148 ²	184,905 ²	188,182		1.77%
April	198,347	215,932	213,405	195,523 ²	183,564 ²	187,631 ¹		2.22%
May	200,882	216,029	213,290	192,286 ²	186,461 ²	188,040 ¹		0.85%
June	204,915	213,197	215,113	191,150 ²	187,604 ²	183,738 ¹		-2.06%
July	205,772	210,657	214,380	186,159 ²	187,932 ²		0.95%	
August	205,340	206,806	203,592	187,968 ²	187,895 ²		-0.04%	
September	204,234	208,868	113,195	192,203 ²	190,322 ²		-0.98%	
October	204,031	211,505	186,122	191,138 ²	189,049 ²		-1.09%	
November	210,242	210,975	199,042	181,374 ²	186,233 ²		2.68%	
December	212,452	211,340	194,450	184,110 ²	186,488 ²		1.29%	
Year Average	202,608	212,054	198,334	189,670 ²	185,539 ²	185,884 [*]		

¹ Partial Year

² All data are revised; see July 2001 statistic changes explanation



Current Oil & Gas Data

Louisiana DNR Technology Assessment Division

PRODUCTION	JAN 11	DEC 10	NOV 10	JAN 10
LOUISIANA FEDERAL OFFSHORE (OCS)				
Crude Oil & Condensate ^C (MMB)	44 ¹	42 ¹	40 ¹	48 ¹
Natural Gas & Casinghead ^C (BCF)	129 ¹	131 ¹	123 ¹	147 ¹
THE UNITED STATES TOTAL				
Crude Oil & Condensate ^C (MMB)	170	174	168	168
Natural Gas & Casinghead ^C (BCF)	1,887	1,897	1,823 ²	1,770 ²
IMPORTS				
U.S. Crude Oil ^C (MMB)	281	267	258	262
U.S. Natural Gas ^C (BCF)	372	351	272	385 ²
BAKER HUGHES RIG COUNTS				
U.S. Gas ^A	909	940	950	822
U.S. Oil ^A	793	759	723	433
U.S. Offshore ^A	26	24	22	42
U.S. Total ^A	1,711	1,711	1,683	1,267
PRICES				
CRUDE OIL (\$/barrel)				
OPEC Average ^C (F.O.B.)	89.74	85.72	80.95	73.42
U.S. Imports Average ^C (F.O.B.)	86.80	83.95 ²	79.56	72.96
U.S. Wellhead Average ^C	85.66	83.98	79.20	72.89
Gulf OCS Wellhead Average ^C	89.04	84.99	81.02	73.91
State Severance Wellhead Average ^E	83.01	79.20	78.08	69.75 ²
NATURAL GAS (\$/MCF)				
U.S. City Gates Average ^C	5.70	5.74 ²	5.49	6.82
U.S. Imports Average ^C (F.O.B.)	4.69	4.56	3.97	5.95
U.S. Wellhead Average ^C	4.08	3.96	3.34	5.14
State Royalty Wellhead Average	4.47	4.52	3.74	5.85
NYMEX Henry Hub End of the Month Settle Gas Price ^B (\$/MMBTU)	4.22	4.27	3.29	5.81

Key

Data Sources

1	Estimated	MCF	Thousand Cubic Feet	A	Oil & Gas Journal	D	Natural Gas Week
2	Revised	MMB	Million Barrels	B	Wall Street Journal	E	LA Dept of Revenue
BCF	Billion Cubic Feet	NA	Not Available	C	U. S. Dept. of Energy		
BTU	British Thermal Unit	OCS	Outer Continental Shelf	Note: Unless otherwise specified, data is from the Louisiana Department of Natural Resources and excludes Federal OCS.			
FO.B.	Free on Board	MMBTU	Million British Thermal Units				

Note from the Editors

Louisiana Energy Facts is published monthly by the Louisiana Department of Natural Resources, Technology Assessment Division as a public service to individuals interested in Louisiana energy activities. Content includes recent oil, gas and other energy statistics and a brief analysis of current trends.

Louisiana Energy Facts articles provide insight and information on subjects of special interest to our readers, and may announce relevant, forthcoming publications.

These documents are available on the Louisiana Department of Natural Resources, Technology Assessment Division home page: <http://www.dnr.louisiana.gov/tad>. From the menu, select **Energy Data & Reports**; choose **Louisiana Energy Facts Newsletter**. Our current online holdings include issues dating from 1998 through the present. If the issue you are seeking is unavailable, please contact us.

To request a subscription or update your mailing address, contact us with your information. Please specify print or electronic subscription. **We value your feedback.** Please send your comments and suggestions for improving and enhancing the newsletter to: techasmt@la.gov.

2010 Louisiana State Producing Oil Wells, By Production Rate OCS Wells Excluded

Louisiana DNR Technology Assessment Division

PRODUCTION BRACKET	NUMBER OF WELLS		TOTAL ANNUAL PRODUCTION	
BARRELS/DAY	WELLS	% TOTAL WELLS	BARRELS/YEAR	% TOTAL PRODUCTION
Less than or equal 10	16,480	82.34%	8,358,086	12.34%
Between 10 - 15	824	4.12%	3,548,452	5.24%
Between 15 - 20	584	2.92%	2,992,764	4.42%
Between 20 - 30	619	3.09%	5,262,082	7.77%
Between 30 - 40	346	1.73%	4,123,839	6.09%
Between 40 - 50	269	1.34%	4,012,308	5.92%
Between 50 - 75	350	1.75%	7,336,906	10.83%
Between 75 - 100	184	0.92%	5,820,781	8.59%
Between 100 - 150	178	0.89%	7,459,843	11.01%
Between 150 - 200	67	0.33%	3,796,107	5.60%
Between 200 - 300	60	0.30%	5,035,012	7.43%
Between 300 - 500	37	0.18%	4,588,014	6.77%
Between 500 - 1,000	12	0.06%	3,549,185	5.24%
Between 1,000 - 2,000	4	0.02%	1,843,961	2.72%
Between 2,000 - 5,000	0	0.00%	0	0.00%
Over 5000	0	0.00%	0	0.00%

2010 Louisiana State Producing Gas Wells, By Production Rate OCS Wells Excluded

Louisiana DNR Technology Assessment Division

PRODUCTION BRACKET	NUMBER OF WELLS		TOTAL ANNUAL PRODUCTION	
MCF/DAY	WELLS	% TOTAL WELLS	MCF/YEAR	% TOTAL PRODUCTION
Less than or equal 50	11,064	57.11%	37,125,110	1.72%
Between 50 - 60	545	2.81%	9,301,761	0.43%
Between 60 - 70	586	3.02%	11,885,547	0.55%
Between 70 - 80	524	2.70%	12,442,326	0.58%
Between 80 - 90	407	2.10%	10,931,077	0.51%
Between 90 - 100	298	1.54%	9,136,665	0.42%
Between 100 - 250	2,491	12.86%	181,426,217	8.41%
Between 250 - 400	1,109	5.72%	107,803,082	5.00%
Between 400 - 800	776	4.01%	134,600,202	6.24%
Between 800 - 1,600	449	2.32%	171,609,724	7.95%
Between 1,600 - 3,200	539	2.78%	404,076,690	18.73%
Between 3,200 - 6,400	444	2.29%	656,586,501	30.43%
Between 6,400 - 12,800	132	0.68%	347,753,731	16.12%
Between 12,800 - 25,600	8	0.04%	48,281,573	2.24%
Over 25,600	2	0.01%	14,603,712	0.68%

This issue of *Louisiana Energy Facts* is funded 100% (\$848) with Petroleum Violation Escrow funds as part of the State Energy Program as approved by the U.S. Department of Energy and Department of Natural Resources. This public document was published at a total cost of \$848.00. 1,000 copies of this public document were published in this first printing at a total cost of \$848.00. The total cost of all printing of this document, including reprints, is \$848.00. This document was published by the Department of Natural Resources, P.O. Box 94396, Baton Rouge, LA 70804-9396 to promulgate the State Energy Program developed under authority of P.L. 94-163. This material was printed in accordance with the standards for printing by State agencies established pursuant to R.S. 43.31.



LOUISIANA DEPARTMENT OF NATURAL RESOURCES
Technology Assessment Division
 P. O. Box 94396
 Baton Rouge, LA 70804-9396

PRST STD
 U.S. POSTAGE
PAID
 BATON ROUGE, LA
 PERMIT NO. 936

ADDRESS SERVICE REQUESTED

INSIDE

Highlights
page 1

**Louisiana Crude Oil
and Condensate
Production**
page 1

Current Oil & Gas Data
page 2

**2010 Louisiana State
Producing Oil Wells,
By Production Rate**
page 3

**2010 Louisiana State
Producing Gas Wells,
By Production Rate**
page 3

Quick Facts
page 4

**Featured Articles
and Inserts**
[Selected Louisiana
Energy Statistics](#)

Quick Facts

JULY 2011

Louisiana DNR Technology Assessment Division

SPOT MARKET PRICES	Jun 11	May 11	Jun 10
Louisiana Natural Gas ^D (\$/MMBTU)	4.48	4.24	4.65
NYMEX Henry Hub Last Settle Gas Price ^B (\$/MMBTU)	4.33	4.38	4.16
Louisiana Sweet Crude - St. James ^B (\$/Barrel)	113.24	116.44	78.87
BAKER HUGHES RIG COUNTS	May 11	Apr 11	May 10
North Louisiana ^A	106	112	140
South Louisiana Inland Waters ^A	16	17	12
South Louisiana Inland ^A	17	17	19
Louisiana State Offshore	2	3	2
Louisiana Federal OCS Offshore	29	23	40
Total Louisiana ^A (OCS included)	170	172	213
PRODUCTION (State Jurisdiction Only)	May 11	Apr 11	May 10
Louisiana Crude Oil & Condensate (MMB)	5.8 ¹	5.6 ¹	5.9 ¹
Louisiana Natural Gas & Casinghead (BCF)	213.7 ¹	210.4 ¹	174.3 ¹
DRILLING PERMITS (State Jurisdiction Only)	May 11	Apr 11	May 10
Total Louisiana Oil and Gas	159	107	118
Louisiana Wildcats	8	4	0
Louisiana Offshore (Wildcats included)	3	2	4