

LOUISIANA ENERGY FACTS

Louisiana Department of Natural Resources
Technology Assessment Division

www.dnr.louisiana.gov/tad

INSIDE

Highlights
page 1

**Light Louisiana Sweet
Crude Oil Average Spot
Price at St. James**
page 1

Current Oil & Gas Data
page 2

**Louisiana Natural Gas
Production from Incapable
Oil and Gas Wells**
page 3

**Louisiana Crude Oil
Production from
Stripper Wells**
page 3

Quick Facts
page 4

**Featured Articles
and Inserts**
[Micro-Grids](#)



Department of Natural Resources
Scott A. Angelle, Secretary

Technology Assessment Division
Christopher P. Knotts, P.E.,
Director
Manuel Lam, Senior Analyst

617 North Third Street
Baton Rouge, LA 70802

Tel. (225) 342-1270
Fax. (225) 242-1397
Email: techasmt@la.gov
www.dnr.louisiana.gov/tad

Highlights SEPTEMBER 2011

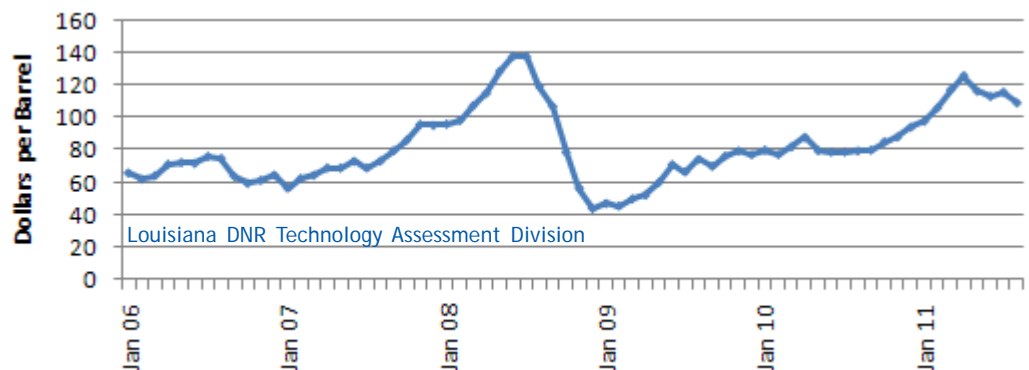
Natural gas prices have been fluctuating around \$4 per MMBTU. On Friday September 2, 2011, the Henry Hub natural gas price was \$4.10 per MMBTU, which was 14 cents higher than the price on August 26, 2011. The increase in price was due to Tropical Storm Lee, which caused Gulf of Mexico gas wells to be shut in. This shows that the Gulf gas production has lost its clout in setting gas prices. In the past, a Gulf of Mexico gas shut in would have caused dollar changes in gas prices. Despite increases in gas demand as the economy starts to recover and decreases in gas imports, gas prices continue to feel downward pressure because of the strong production from recently developed shale fields. Gas prices are expected to stay around \$4 per MMBTU for the fall months.

Light Louisiana Sweet Crude Oil Average Spot Price at St. James*

Month	(Dollars per Barrel)						% Change	
	2006	2007	2008	2009	2010	2011	09/10	10/11
January	66.01	56.72	96.12	47.17	80.16	97.83		22.04%
February	62.22	62.56	98.45	45.63	77.43	106.21		37.17%
March	64.33	64.62	107.45	50.08	82.04	117.41		43.11%
April	71.43	69.19	115.13	52.32	87.90	126.03		43.38%
May	72.51	69.09	128.74	60.29	79.73	116.44		46.04%
June	71.84	73.20	137.91	71.15	78.87	113.24		43.58%
July	76.27	69.14	137.80	66.79	79.00	115.86		46.66%
August	75.05	73.33	119.41	74.31	79.61	109.29		37.28%
September	63.91	79.86	107.07	70.18	80.14		14.19%	
October	59.52	86.25	78.78	76.43	85.23		11.51%	
November	61.53	95.97	56.74	79.62	88.16		10.73%	
December	64.67	95.32	43.93	77.33	94.31		21.96%	
Year Average	67.44	74.60	102.29	64.28	82.72	112.79 **		

* All data are revised, see July 2001 statistics changes explanation.

** Partial Year



Current Oil & Gas Data

Louisiana DNR Technology Assessment Division

PRODUCTION	MAR 11	FEB 11	JAN 11	MAR 10
LOUISIANA FEDERAL OFFSHORE (OCS)				
Crude Oil & Condensate ^C (MMB)	39 ¹	36 ¹	44 ¹	45 ¹
Natural Gas & Casinghead ^C (BCF)	122 ¹	111 ¹	131 ¹	152 ¹
THE UNITED STATES TOTAL				
Crude Oil & Condensate ^C (MMB)	174	157	170	171
Natural Gas & Casinghead ^C (BCF)	1,928	1,679	1,887	1,821 ²
IMPORTS				
U.S. Crude Oil ^C (MMB)	280	224	281	290 ²
U.S. Natural Gas ^C (BCF)	315	309	372	319
BAKER HUGHES RIG COUNTS				
U.S. Gas ^A	884	907	909	933
U.S. Oil ^A	830	801	793	471
U.S. Offshore ^A	26	26 ²	26	50
U.S. Total ^A	1,720	1,718	1,711	1,419
PRICES				
CRUDE OIL (\$/barrel)				
OPEC Average ^C (F.O.B.)	106.19	96.01 ²	89.74	75.83
U.S. Imports Average ^C (F.O.B.)	104.19	92.07 ²	86.80	75.41
U.S. Wellhead Average ^C	99.19	86.69	85.66	75.77
Gulf OCS Wellhead Average ^C	103.24	91.47	89.04	75.11
State Severance Wellhead Average ^E	88.38	89.51	83.01	74.29
NATURAL GAS (\$/MCF)				
U.S. City Gates Average ^C	5.68	5.67 ²	5.68 ²	6.40 ²
U.S. Imports Average ^C (F.O.B.)	4.25	4.50	4.69	4.87
U.S. Wellhead Average ^C	3.90	4.23	4.08	4.36
State Royalty Wellhead Average	4.12	4.34 ²	4.58 ²	4.75 ²
NYMEX Henry Hub End of the Month Settle Gas Price ^B (\$/MMBTU)	3.79	4.32	4.22	4.82

Key

Data Sources

1	Estimated	MCF	Thousand Cubic Feet	A	Oil & Gas Journal	D	Natural Gas Week
2	Revised	MMB	Million Barrels	B	Wall Street Journal	E	LA Dept of Revenue
BCF	Billion Cubic Feet	NA	Not Available	C	U. S. Dept. of Energy		
BTU	British Thermal Unit	OCS	Outer Continental Shelf	Note: Unless otherwise specified, data is from the Louisiana Department of Natural Resources and excludes Federal OCS.			
FO.B.	Free on Board	MMBTU	Million British Thermal Units				

Note from the Editors

Louisiana Energy Facts is published monthly by the Louisiana Department of Natural Resources, Technology Assessment Division as a public service to individuals interested in Louisiana energy activities. Content includes recent oil, gas and other energy statistics and a brief analysis of current trends.

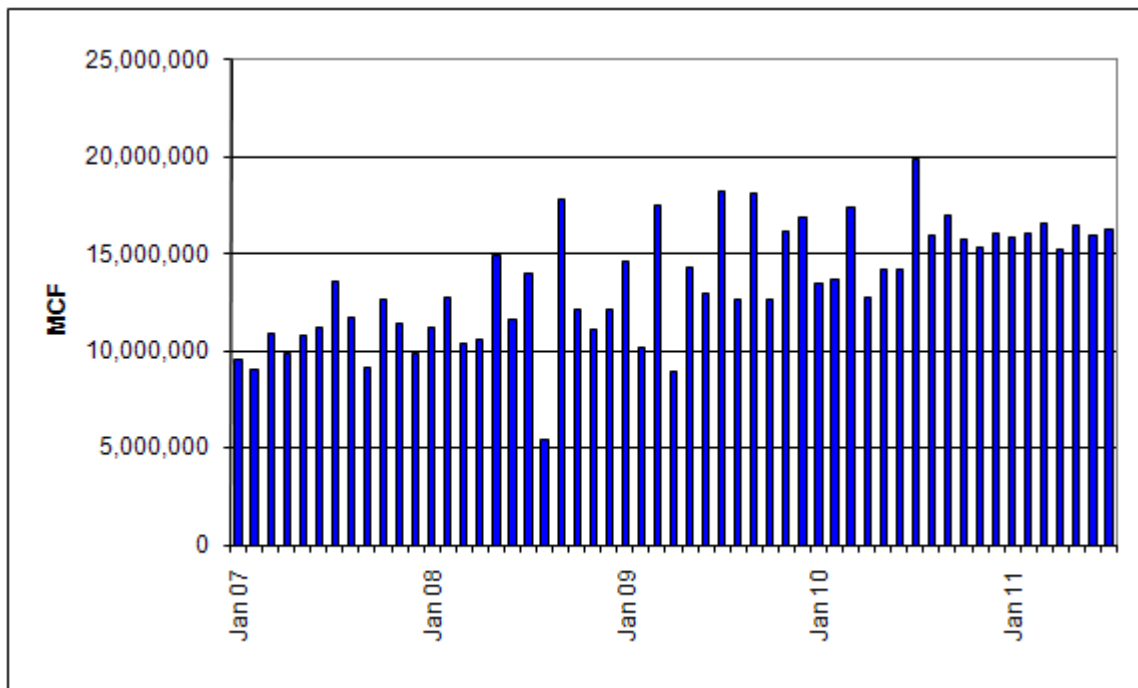
Louisiana Energy Facts articles provide insight and information on subjects of special interest to our readers, and may announce relevant, forthcoming publications.

These documents are available on the Louisiana Department of Natural Resources, Technology Assessment Division home page: <http://www.dnr.louisiana.gov/tad>. From the menu, select **Energy Data & Reports**; choose **Louisiana Energy Facts Newsletter**. Our current online holdings include issues dating from 1998 through the present. If the issue you are seeking is unavailable, please contact us.

To request a subscription or update your mailing address, contact us with your information. Please specify print or electronic subscription. **We value your feedback.** Please send your comments and suggestions for improving and enhancing the newsletter to: techasmt@la.gov.

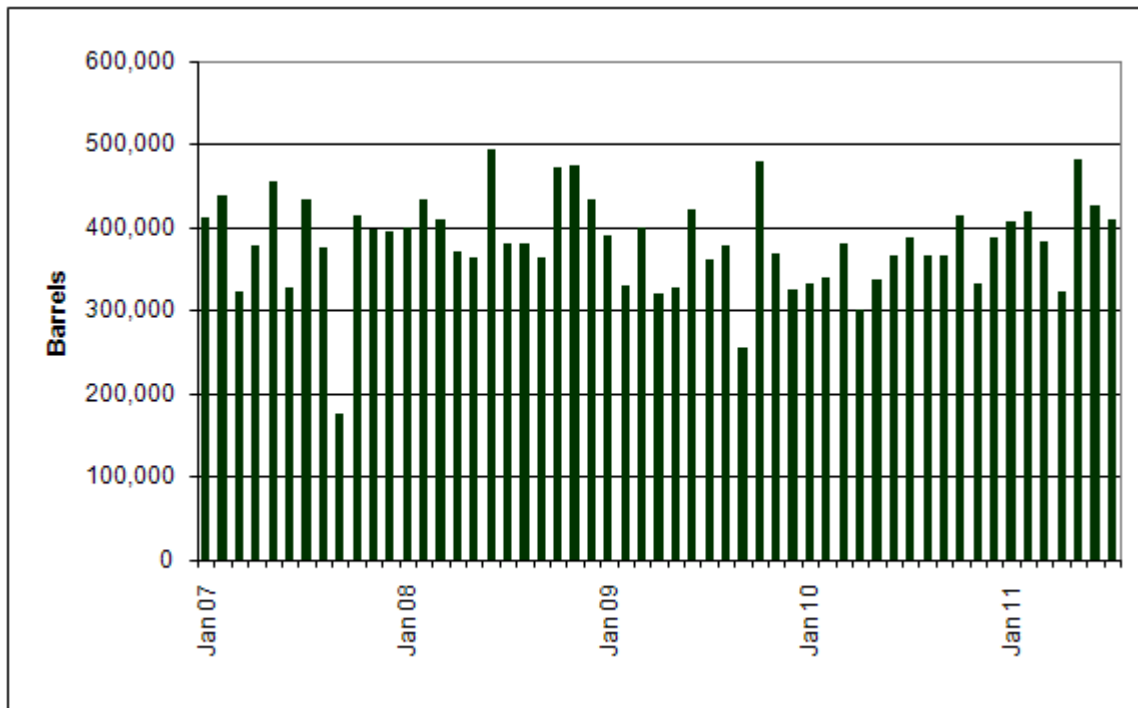
Louisiana Natural Gas Production From Incapable Oil and Gas Wells^E

Louisiana DNR Technology Assessment Division



Louisiana Crude Oil Production From Stripper Wells

Louisiana DNR Technology Assessment Division



This issue of **Louisiana Energy Facts** is funded 100% (\$745) with Petroleum Violation Escrow funds as part of the State Energy Program as approved by the U.S. Department of Energy and Department of Natural Resources. This public document was published at a total cost of \$745. 995 copies of this public document were published in this first printing at a total cost of \$745. The total cost of all printing of this document, including reprints, is \$745. This document was published by the Department of Natural Resources, P.O. Box 94396, Baton Rouge, LA 70804-9396 to promulgate the State Energy Program developed under authority of P.L. 94-163. This material was printed in accordance with the standards for printing by State agencies established pursuant to R.S. 43.31.



LOUISIANA DEPARTMENT OF NATURAL RESOURCES
 Technology Assessment Division
 P. O. Box 94396
 Baton Rouge, LA 70804-9396

PRST STD
 U.S. POSTAGE
PAID
 BATON ROUGE, LA
 PERMIT NO. 936

ADDRESS SERVICE REQUESTED

INSIDE

Highlights
page 1

Light Louisiana Sweet Crude Oil Average Spot Price at St. James
page 1

Current Oil & Gas Data
page 2

Louisiana Natural Gas Production from Incapable Oil and Gas Wells
page 3

Louisiana Crude Oil Production from Stripper Wells
page 3

Quick Facts
page 4

Featured Articles and Inserts
[Micro-Grids](#)

Quick Facts

SEPTEMBER 2011

Louisiana DNR Technology Assessment Division

SPOT MARKET PRICES

	Aug 11	Jul 11	Aug 10
Louisiana Natural Gas ^D (\$/MMBTU)	4.13	4.34	4.45
NYMEX Henry Hub Last Settle Gas Price ^B (\$/MMBTU)	4.37	4.36	4.77
Louisiana Sweet Crude - St. James ^B (\$/Barrel)	109.29	115.86	79.61

BAKER HUGHES RIG COUNTS

	Jul 11	Jun 11	Jul 10
North Louisiana ^A	93	100	138
South Louisiana Inland Waters ^A	17	16	12
South Louisiana Inland ^A	29	22	16
Louisiana State Offshore	3	2	1
Louisiana Federal OCS Offshore	30	31	13
Total Louisiana ^A (OCS included)	172	171	180

PRODUCTION (State Jurisdiction Only)

	Jul 11	Jun 11	Jul 10
Louisiana Crude Oil & Condensate (MMB)	5.6 ¹	5.5 ¹	5.8 ²
Louisiana Natural Gas & Casinghead (BCF)	227.6 ¹	225.1 ¹	190.0 ²

DRILLING PERMITS (State Jurisdiction Only)

	Jul 11	Jun 11	Jul 10
Total Louisiana Oil and Gas	128	159	169
Louisiana Wildcats	2	4	6
Louisiana Offshore (Wildcats included)	3	1	1