

# LOUISIANA ENERGY FACTS

Louisiana Department of Natural Resources  
Technology Assessment Division

[www.dnr.louisiana.gov/tad](http://www.dnr.louisiana.gov/tad)

## INSIDE

**Highlights**  
page 1

**Louisiana Natural Gas & Casinghead Production**  
page 1

**Current Oil & Gas Data**  
page 2

**Louisiana Mineral Severance Tax Revenue by Source**  
page 3

**Louisiana Mineral Royalty Revenue by Source**  
page 3

**Quick Facts**  
page 4

**Featured Articles and Inserts**  
Selected Louisiana Energy Statistics



Department of Natural Resources  
**Stephen Chustz**, Secretary

Technology Assessment Division  
**William J. Delmar, Jr., P.E.**  
Assistant Director  
**Manuel Lam**, Senior Analyst

617 North Third Street  
Baton Rouge, LA 70802

Tel. (225) 342-1270  
Fax. (225) 242-1397  
Email: [techasmt@la.gov](mailto:techasmt@la.gov)  
[www.dnr.louisiana.gov/tad](http://www.dnr.louisiana.gov/tad)

## Highlights

## AUGUST 2013

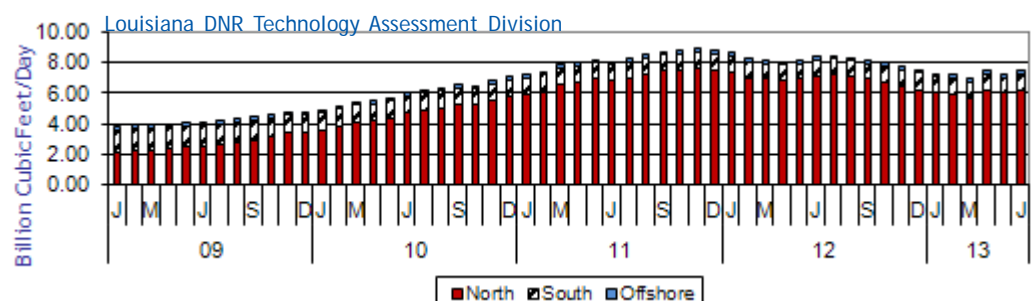
The Gulf of Mexico is the fastest growing offshore market in the world. After the Macondo's accident in April 2010 some deep water drilling rigs moved to offshore areas in West Africa and Brazil, because of the uncertainty in the Gulf areas. Before the accident, the average number of active rigs was 52, during the five months moratorium following the accident, the average rigs fell to 15. By the end of 2010, the average bounced back to 24 rigs, and in July 2013, the average recovered to 55 rigs. The recent increase in rigs in the Gulf is due to newly built and more efficient deep water drilling ships, rather than rigs relocating from other parts of the world. The Gulf's resurgence is fueled by the large offshore industry already in place along the U.S. Gulf Coast, a stable operating environment, and a lower operating cost than other offshore drilling regions around the world.

### Louisiana Natural Gas & Casinghead Production\*\*, Excluding Federal OCS

Month	(Billion Cubic Feet/Day)						% Change	
	2008	2009	2010	2011	2012	2013	11/12	12/13
January	3.71	3.76	4.84 <sup>2</sup>	7.14 <sup>2</sup>	8.61 <sup>2</sup>	7.24		-15.85%
February	3.71	3.85	5.09	7.32	8.16	7.17		-12.22%
March	3.74	3.86	5.33	7.81	8.12 <sup>2</sup>	6.90		-15.02%
April	3.78	3.95	5.48	7.95 <sup>2</sup>	8.02 <sup>2</sup>	7.41		-7.64%
May	3.86	4.04	5.64	8.12 <sup>2</sup>	8.09 <sup>2</sup>	7.19		-11.21%
June	3.89	4.05	5.96	8.01	8.33	7.44		-10.65%
July	3.93	4.12	6.15	8.19	8.37		2.30%	
August	3.82	4.29	6.30 <sup>2</sup>	8.47	8.20 <sup>2</sup>		-3.24%	
September	2.90	4.37	6.49	8.63 <sup>2</sup>	8.05 <sup>2</sup>		-6.66%	
October	3.65	4.54	6.45 <sup>2</sup>	8.71 <sup>2</sup>	7.98 <sup>2</sup>		-8.31%	
November	3.84	4.71	6.74	8.88	7.68 <sup>2</sup>		-13.52%	
December	3.73	4.68	6.99	8.74 <sup>2</sup>	7.49 <sup>2</sup>		-14.40%	
<b>Year Average</b>	<b>3.71</b>	<b>4.19</b>	<b>5.96<sup>2</sup></b>	<b>8.16</b>	<b>8.09<sup>2</sup></b>	<b>7.22<sup>**</sup></b>		

\* All data are revised, see July 2001 statistics changes explanation.

\*\* Partial Year



## Current Oil & Gas Data

Louisiana DNR Technology Assessment Division

PRODUCTION	FEB 13	JAN 13	DEC 12	FEB 12
LOUISIANA FEDERAL OFFSHORE (OCS)				
Crude Oil & Condensate <sup>C</sup> (MMB)	32 <sup>1</sup>	36 <sup>1</sup>	38 <sup>1</sup>	33 <sup>1</sup>
Natural Gas & Casinghead <sup>C</sup> (BCF)	77 <sup>1</sup>	86 <sup>1</sup>	94 <sup>1</sup>	95 <sup>1</sup>
THE UNITED STATES TOTAL				
Crude Oil & Condensate <sup>C</sup> (MMB)	199	219	220	181 <sup>2</sup>
Natural Gas & Casinghead <sup>C</sup> (BCF)	1,853	2,032	2,041	1,890 <sup>2</sup>
<b>IMPORTS</b>				
U.S. Crude Oil <sup>C</sup> (MMB)	204	247	235	248
U.S. Natural Gas <sup>C</sup> (BCF)	235	276	251	270 <sup>2</sup>
<b>BAKER HUGHES RIG COUNTS</b>				
U.S. Gas <sup>A</sup>	426	434	423	723
U.S. Oil <sup>A</sup>	1,332	1,318	1,358	1,261
U.S. Offshore <sup>A</sup>	54	52	50	42
U.S. Total <sup>A</sup>	1,762	1,756	1,784	1,990
<b>PRICES</b>				
CRUDE OIL (\$/barrel)				
OPEC Average <sup>C</sup> (F.O.B.)	106.93	102.42	98.04	113.85
U.S. Imports Average <sup>C</sup> (F.O.B.)	100.94	95.23	92.69 <sup>2</sup>	109.23 <sup>2</sup>
U.S. Wellhead Average <sup>C</sup>	95.04	94.89	89.81	102.04 <sup>2</sup>
Gulf OCS Wellhead Average <sup>C</sup>	107.62	107.02	103.03	108.66
State Severance Wellhead Average <sup>E</sup>	105.56	102.89	109.51	102.83
NATURAL GAS (\$/MCF)				
U.S. City Gates Average <sup>C</sup>	4.56	4.52	4.79	4.73 <sup>2</sup>
U.S. Imports Average <sup>C</sup> (F.O.B.)	3.93	4.09	3.93	2.86
U.S. Spot Market Average <sup>D</sup>	4.07	4.01 <sup>2</sup>	3.81 <sup>2</sup>	2.79 <sup>2</sup>
State Royalty Wellhead Average	3.28	3.23	3.48	2.73 <sup>2</sup>
NYMEX Henry Hub End of the Month Settle Gas Price <sup>B</sup> (\$/MMBTU)	3.23	3.35	3.70	2.68

### Key

### Data Sources

<b>1</b>	Estimated	<b>MCF</b>	Thousand Cubic Feet	<b>A</b>	Oil & Gas Journal	<b>D</b>	Natural Gas Week
<b>2</b>	Revised	<b>MMB</b>	Million Barrels	<b>B</b>	Wall Street Journal	<b>E</b>	LA Dept of Revenue
<b>BCF</b>	Billion Cubic Feet	<b>NA</b>	Not Available	<b>C</b>	U. S. Dept. of Energy		
<b>BTU</b>	British Thermal Unit	<b>OCS</b>	Outer Continental Shelf	<b>Note:</b> Unless otherwise specified, data is from the Louisiana Department of Natural Resources and excludes Federal OCS.			
<b>FO.B.</b>	Free on Board	<b>MMBTU</b>	Million British Thermal Units				

### Note from the Editors

**Louisiana Energy Facts** is published monthly by the Louisiana Department of Natural Resources, Technology Assessment Division as a public service to individuals interested in Louisiana energy activities. Content includes recent oil, gas and other energy statistics and a brief analysis of current trends.

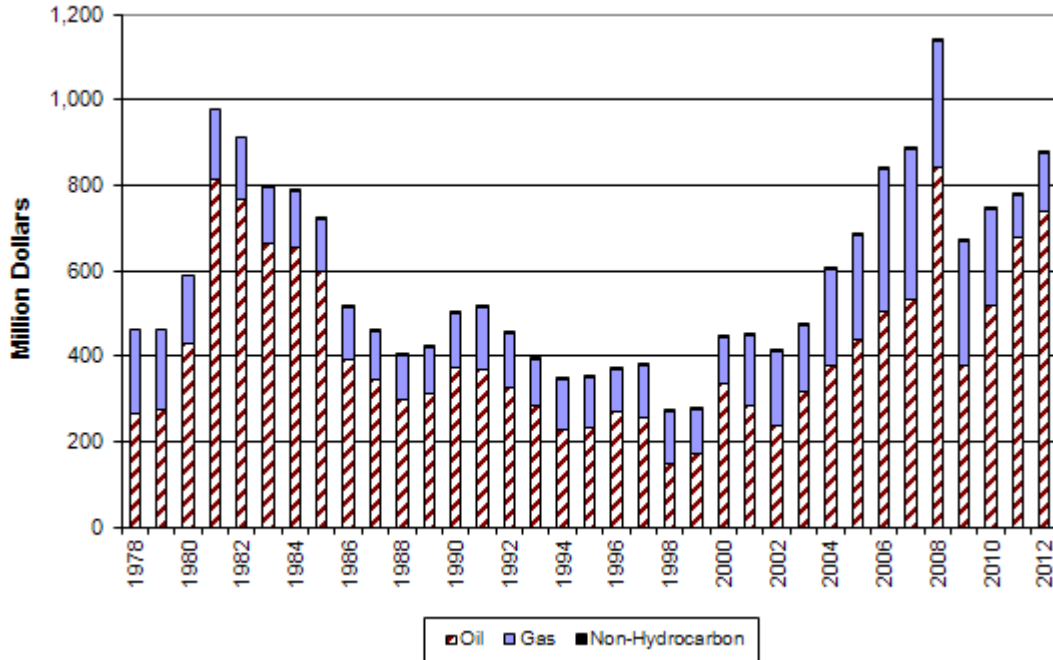
**Louisiana Energy Facts** articles provide insight and information on subjects of special interest to our readers, and may announce relevant, forthcoming publications.

These documents are available on the Louisiana Department of Natural Resources, Technology Assessment Division home page: <http://www.dnr.louisiana.gov/tad>. From the menu, select **Newsletters**. Our current online holdings include issues dating from 1998 through the present. If the issue you are seeking is unavailable, please contact us.

**To request a subscription or update your mailing address**, contact us with your information. Please specify print or electronic subscription. **We value your feedback.** Please send your comments and suggestions for improving and enhancing the newsletter to: [techasmt@la.gov](mailto:techasmt@la.gov).

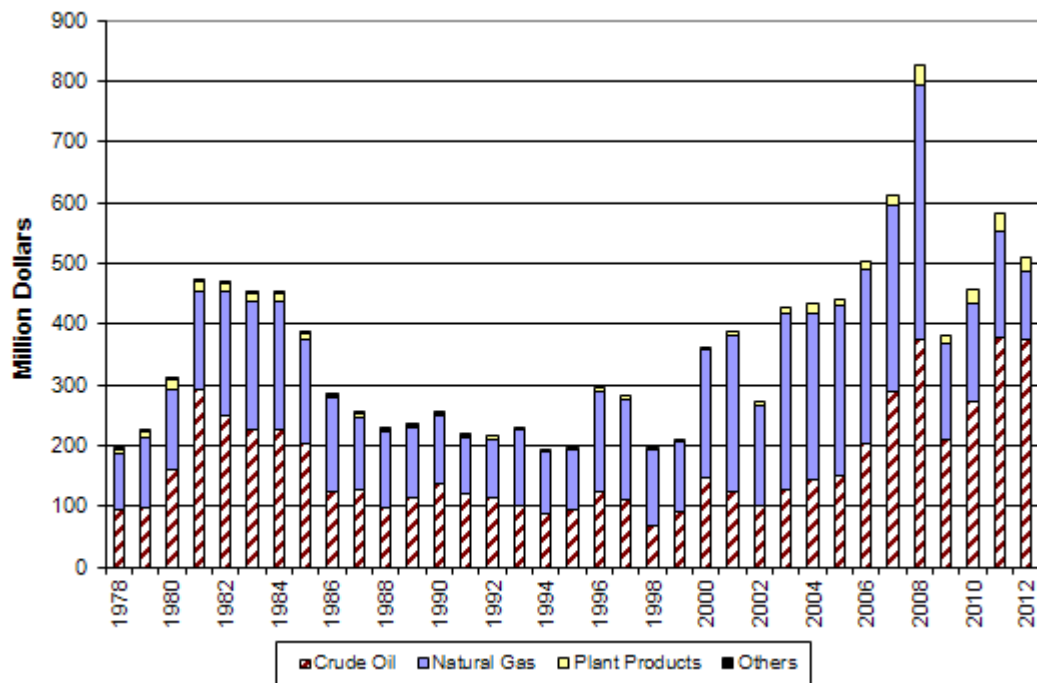
# Louisiana Mineral Severance Tax Revenue by Source, Excluding Federal OCS

Louisiana DNR Technology Assessment Division



# Louisiana Mineral Royalty Revenue by Source, Excluding Federal OCS

Louisiana DNR Technology Assessment Division



This issue of **Louisiana Energy Facts** is funded 100% (\$835) with Petroleum Violation Escrow funds as part of the State Energy Program as approved by the U.S. Department of Energy and Department of Natural Resources. This public document was published at a total cost of \$835. 970 copies of this public document were published in this first printing at a total cost of \$835. The total cost of all printing of this document, including reprints, is \$835. This document was published by the Department of Natural Resources, P.O. Box 94396, Baton Rouge, LA 70804-9396 to promulgate the State Energy Program developed under authority of P.L. 94-163. This material was printed in accordance with the standards for printing by State agencies established pursuant to R.S. 43.31.



LOUISIANA DEPARTMENT OF NATURAL RESOURCES  
 Technology Assessment Division  
 P. O. Box 94396  
 Baton Rouge, LA 70804-9396

PRST STD  
 U.S. POSTAGE  
**PAID**  
 BATON ROUGE, LA  
 PERMIT NO. 936

## ADDRESS SERVICE REQUESTED

### INSIDE

Highlights  
 page 1

Louisiana Natural Gas &  
 Casinghead Production  
 page 1

Current Oil & Gas Data  
 page 2

Louisiana Mineral  
 Severance Tax Revenue  
 by Source  
 page 3

Louisiana Mineral  
 Royalty Revenue  
 by Source  
 page 3

Quick Facts  
 page 4

Featured Articles  
 and Inserts  
 Selected Louisiana  
 Energy Statistics

## Quick Facts

## AUGUST 2013

Louisiana DNR Technology Assessment Division

### SPOT MARKET PRICES

	Jul 13	Jun 13	Jul 12
Louisiana Natural Gas <sup>D</sup> (\$/MMBTU)	3.61	3.83 <sup>2</sup>	2.84
NYMEX Henry Hub Last Settle Gas Price <sup>B</sup> (\$/MMBTU)	3.71	4.15	2.77
Louisiana Sweet Crude - St. James <sup>B</sup> (\$/Barrel)	110.52	104.19	103.49

### BAKER HUGHES RIG COUNTS

	Jun 13	May 13	Jun 12
North Louisiana <sup>A</sup>	24	22	31
South Louisiana Inland Waters <sup>A</sup>	21	23	19
South Louisiana Inland <sup>A</sup>	17	19	29
Louisiana State Offshore	1	1	1
Louisiana Federal OCS Offshore	44	43	45
Total Louisiana <sup>A</sup> (OCS included)	106	107	125

### PRODUCTION (State Jurisdiction Only)

	Jun 13	May 13	Jun 12
Louisiana Crude Oil & Condensate (MMB)	6.5 <sup>1</sup>	6.6 <sup>1</sup>	6.1 <sup>2</sup>
Louisiana Natural Gas & Casinghead (BCF)	223.2 <sup>1</sup>	222.8 <sup>1</sup>	249.8 <sup>2</sup>

### DRILLING PERMITS (State Jurisdiction Only)

	Jun 13	May 13	Jun 12
Total Louisiana Oil and Gas	120	127	150
Louisiana Wildcats	6	4	4
Louisiana Offshore (Wildcats included)	6	1	1