

LOUISIANA ENERGY FACTS

Louisiana Department of Natural Resources
Technology Assessment Division

www.dnr.louisiana.gov/tad

INSIDE

Highlights
page 1

**Louisiana Monthly
Crude Oil & Condensate
Production**
page 1

Current Oil & Gas Data
page 2

**Louisiana Natural
Gas Production
from Incapable Oil
and Gas Wells**
page 3

**Louisiana Crude Oil
Production from
Stripper Wells**
page 3

Quick Facts
page 4

**Featured Articles
and Inserts**
[Selected Louisiana
Energy Statistics](#)



Department of Natural Resources
Stephen Chustz, Secretary

Technology Assessment Division
Thomas Harris, Director
Manuel Lam, Senior Analyst

617 North Third Street
Baton Rouge, LA 70802

Tel. (225) 342-1270
Fax. (225) 242-1397
Email: techasmt@la.gov
www.dnr.louisiana.gov/tad

Highlights

JULY 2014

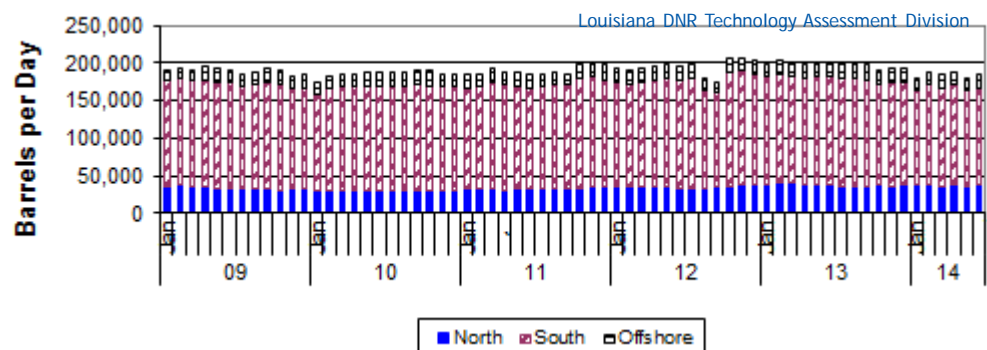
The monthly Light Louisiana Sweet crude average spot price rose above \$108 a barrel in June 2014, after bottoming out in November 2013 at \$97.16 per barrel. Even with escalating violence in the Middle East and threats to crude oil supplies, prices have remained relatively stable. The price of oil has not increased over \$120 per barrel, despite the instability in northern and central Africa, because stockpiles in the largest consumer nations are high. On the horizon is activity in China, the second largest world oil consumer. China's economy is showing signs that it is picking up. In the U.S., the refinery seasonal production has reached its peak and has shown continuous increase in natural gas and crude production from U.S. shale plays. The June 20, 2014 EIA report said the stockpile rose 1.74 million barrels, 388.1 million over the previous week, but was 6.04 million barrels lower than last year.

Louisiana Monthly Crude Oil & Condensate Production**, Excluding Federal OCS

Month	(Barrels/Day)						% Change	
	2009	2010	2011	2012	2013	2014	12/13	13/14
January	189,424	174,156 ²	183,671 ²	192,947 ²	199,090 ²	180,403		-9.39%
February	192,445	181,653	184,202 ²	189,967 ²	202,279 ²	187,167		-7.47%
March	191,198	184,735	193,620 ²	192,705 ²	199,837 ²	183,748 ¹		-8.05%
April	194,657	183,468 ²	187,447	194,872 ²	197,297 ²	187,167 ¹		-5.13%
May	191,322	186,381 ²	187,796	198,080 ²	200,040 ²	180,090 ¹		-9.97%
June	190,448	186,855	184,938 ²	194,783 ²	201,251 ²	183,603 ¹		-8.77%
July	185,205	187,218	184,633 ²	198,078 ²	200,214 ²		1.08%	
August	187,272	187,227 ²	187,899 ²	179,101 ²	199,649 ²		11.47%	
September	191,417	190,211 ²	185,857 ²	173,044 ²	197,640 ²		14.21%	
October	190,377	188,640	198,643 ²	206,260 ²	190,167 ²		-7.80%	
November	180,818	185,830	199,819 ²	206,040 ²	192,576 ²		-6.53%	
December	183,418	185,863 ²	199,005 ²	203,469 ²	192,222 ²		-5.53%	
Year Average	189,000	185,187	189,794 ²	194,112 ²	197,688 ²	183,696 [*]		

* Partial Year

**All data are revised; see July 2001 statistic changes explanation



Current Oil & Gas Data

Louisiana DNR Technology Assessment Division

PRODUCTION	JAN 14	DEC 13	NOV 13	JAN 13
LOUISIANA FEDERAL OFFSHORE (OCS)				
Crude Oil & Condensate ^C (MMB)	33 ¹	33 ¹	32 ¹	36 ¹
Natural Gas & Casinghead ^C (BCF)	79 ¹	82 ¹	80 ¹	89 ¹
THE UNITED STATES TOTAL				
Crude Oil & Condensate ^C (MMB)	235	245	238	219 ²
Natural Gas & Casinghead ^C (BCF)	2,099	2,092	2,048	2,022 ²
IMPORTS				
U.S. Crude Oil ^C (MMB)	235	241	222	247
U.S. Natural Gas ^C (BCF)	295	273	219	228 ²
BAKER HUGHES RIG COUNTS				
U.S. Gas ^A	362	373	366	434
U.S. Oil ^A	1,403	1,396	1,384	1,318
U.S. Offshore ^A	58	61	58	52
U.S. Total ^A	1,769	1,771	1,756	1,756
PRICES				
CRUDE OIL (\$/barrel)				
OPEC Average ^C (F.O.B.)	94.86	94.41	93.23	102.42
U.S. Imports Average ^C (F.O.B.)	91.00	89.90	88.30	95.23
U.S. Wellhead Average ^C	89.59	91.85	88.70	94.89
Gulf OCS Wellhead Average ^C	88.11	93.94	94.57	107.02
State Severance Wellhead Average ^E	96.09	106.02	104.73	102.89
NATURAL GAS (\$/MCF)				
U.S. City Gates Average ^C	5.58	4.91	4.77	4.52
U.S. Imports Average ^C (F.O.B.)	6.94	4.75	3.76	4.09 ²
U.S. Spot Market Average ^D	6.43	4.69	3.77	4.01
State Royalty Wellhead Average	4.53	4.06	3.56	3.26 ²
NYMEX Henry Hub End of the Month Settle Gas Price ^B (\$/MMBTU)	4.41	3.82	3.50	3.35

Key

Data Sources

1	Estimated	MCF	Thousand Cubic Feet	A	Oil & Gas Journal	D	Natural Gas Week
2	Revised	MMB	Million Barrels	B	Wall Street Journal	E	LA Dept of Revenue
BCF	Billion Cubic Feet	NA	Not Available	C	U. S. Dept. of Energy		
BTU	British Thermal Unit	OCS	Outer Continental Shelf	Note: Unless otherwise specified, data is from the Louisiana Department of Natural Resources and excludes Federal OCS.			
FO.B.	Free on Board	MMBTU	Million British Thermal Units				

Note from the Editors

Louisiana Energy Facts is published monthly by the Louisiana Department of Natural Resources, Technology Assessment Division as a public service to individuals interested in Louisiana energy activities. Content includes recent oil, gas and other energy statistics and a brief analysis of current trends.

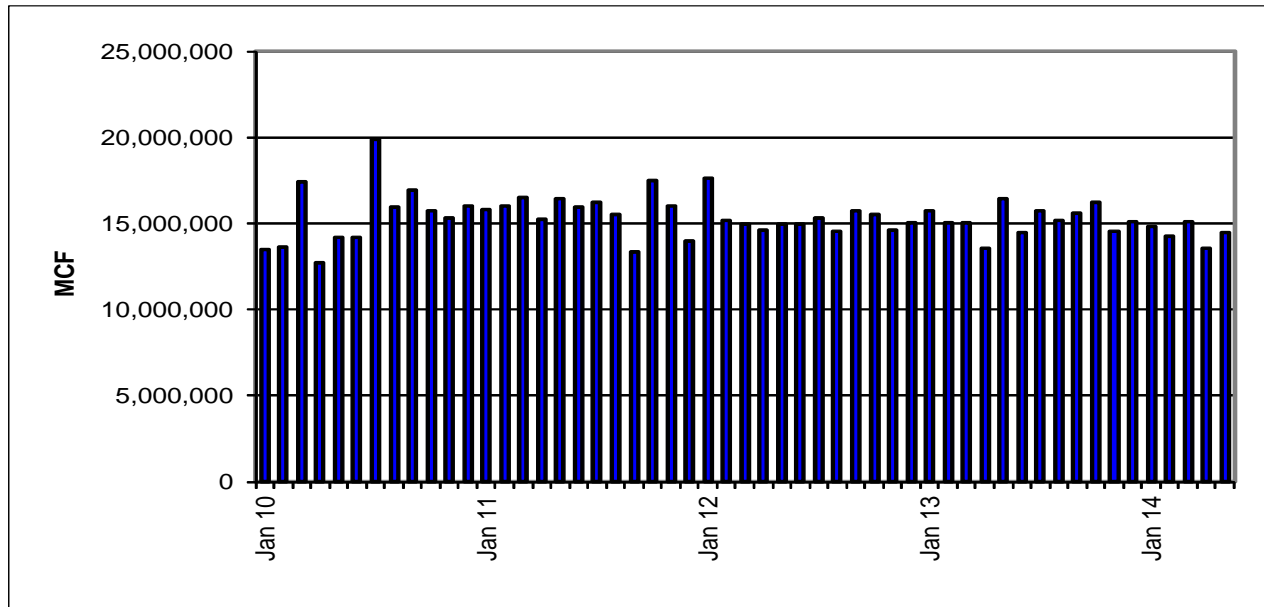
Louisiana Energy Facts articles provide insight and information on subjects of special interest to our readers, and may announce relevant, forthcoming publications.

These documents are available on the Louisiana Department of Natural Resources, Technology Assessment Division home page: <http://www.dnr.louisiana.gov/tad>. From the menu, select **Newsletters**. Our current online holdings include issues dating from 1998 through the present. If the issue you are seeking is unavailable, please contact us.

To request a subscription or update your mailing address, contact us with your information. Please specify print or electronic subscription. **We value your feedback.** Please send your comments and suggestions for improving and enhancing the newsletter to: techasmt@la.gov.

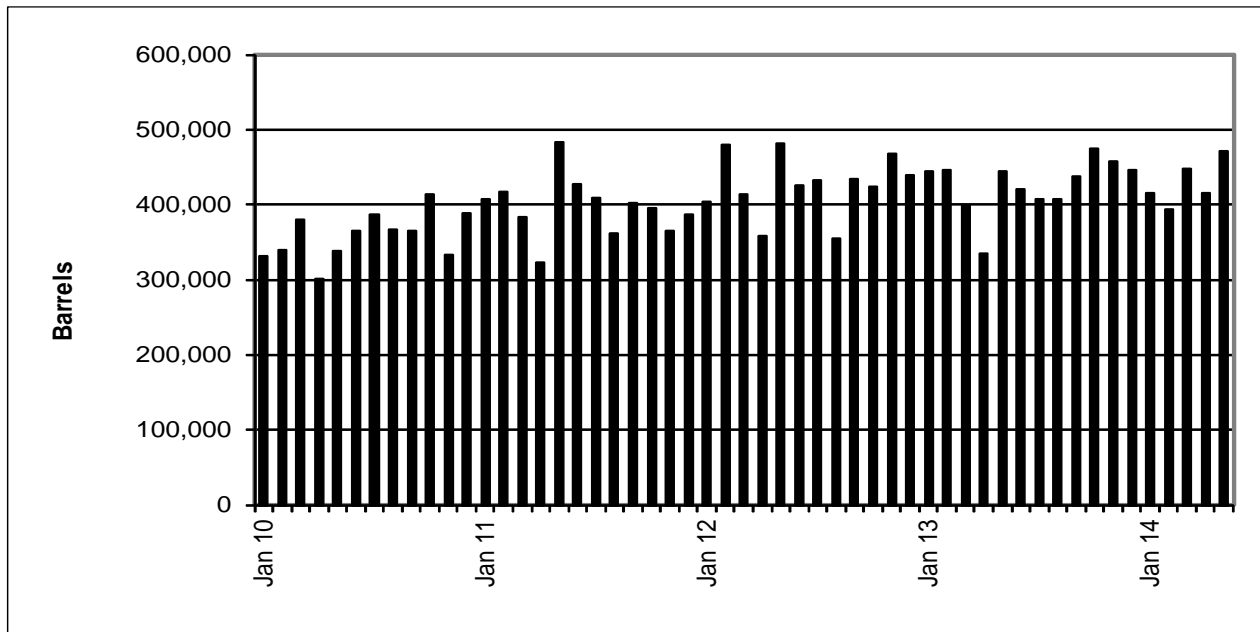
Louisiana Natural Gas Production from Incapable Oil and Gas Wells^E

Louisiana DNR Technology Assessment Division



Louisiana Crude Oil Production from Stripper Wells^E

Louisiana DNR Technology Assessment Division



This issue of **Louisiana Energy Facts** is funded 100% (\$615) with Petroleum Violation Escrow funds as part of the State Energy Program as approved by the U.S. Department of Energy and Department of Natural Resources. This public document was published at a total cost of \$615. 930 copies of this public document were published in this first printing at a total cost of \$615. The total cost of all printing of this document, including reprints, is \$615. This document was published by the Department of Natural Resources, P.O. Box 94396, Baton Rouge, LA 70804-9396 to promulgate the State Energy Program developed under authority of P.L. 94-163. This material was printed in accordance with the standards for printing by State agencies established pursuant to R.S. 43.31.



LOUISIANA DEPARTMENT OF NATURAL RESOURCES
Technology Assessment Division
 P. O. Box 94396
 Baton Rouge, LA 70804-9396

PRST STD
 U.S. POSTAGE
PAID
 BATON ROUGE, LA
 PERMIT NO. 936

ADDRESS SERVICE REQUESTED

INSIDE

Highlights
page 1

Louisiana Monthly Crude Oil & Condensate Production
page 1

Current Oil & Gas Data
page 2

Louisiana Natural Gas Production from Incapable Oil and Gas Wells
page 3

Louisiana Crude Oil Production from Stripper Wells
page 3

Quick Facts
page 4

Featured Articles and Inserts
[Selected Louisiana Energy Statistics](#)

Quick Facts

JULY 2014

Louisiana DNR Technology Assessment Division

SPOT MARKET PRICES

	Jun 14	May 14	Jun 13
Louisiana Natural Gas ^D (\$/MMBTU)	4.51	4.54	3.89 ²
NYMEX Henry Hub Last Settle Gas Price ^B (\$/MMBTU)	4.62	4.80	4.15
Louisiana Sweet Crude - St. James ^B (\$/Barrel)	108.22	104.27	104.19

BAKER HUGHES RIG COUNTS

	May 14	Apr 14	May 13
North Louisiana ^A	28	24	22
South Louisiana Inland Waters ^A	14	16	23
South Louisiana Inland ^A	19	20	18 ²
Louisiana State Offshore	0	0	1
Louisiana Federal OCS Offshore	53	47	43
Total Louisiana ^A (OCS included)	114	107	107

PRODUCTION (State Jurisdiction Only)

	May 14	Apr 14	May 13
Louisiana Crude Oil & Condensate (MMB)	5.5 ¹	5.6 ¹	6.2 ²
Louisiana Natural Gas & Casinghead (BCF)	163.5 ¹	164.1 ¹	207.0 ²

DRILLING PERMITS (State Jurisdiction Only)

	May 14	Apr 14	May 13
Total Louisiana Oil and Gas	122	102	127
Louisiana Wildcats	1	0	4
Louisiana Offshore (Wildcats included)	0	2	1