

# LOUISIANA ENERGY FACTS

Louisiana Department of Natural Resources  
Technology Assessment Division

[www.dnr.louisiana.gov/tad](http://www.dnr.louisiana.gov/tad)

## INSIDE

**Highlights**  
page 1

**Louisiana Monthly  
Crude Oil &  
Condensate Production**  
page 1

**Current Oil & Gas Data**  
page 2

**Louisiana Natural Gas  
Production from Incapable  
Oil and Gas Wells**  
page 3

**Louisiana Crude Oil  
Production from  
Stripper Wells**  
page 3

**Quick Facts**  
page 4

**Featured Articles  
and Inserts**  
[Selected Louisiana  
Energy Statistics](#)



Department of Natural  
Resources

Thomas Harris, Secretary

Technology Assessment  
Division

Paul Miller, Director  
Edward O'Brien, Economist

617 North Third Street  
Baton Rouge, LA 70802

Tel. (225) 342-1270  
Fax. (225) 242-1397  
Email: [techasmt@la.gov](mailto:techasmt@la.gov)  
[www.dnr.louisiana.gov/tad](http://www.dnr.louisiana.gov/tad)

## Highlights

**JULY 2018**

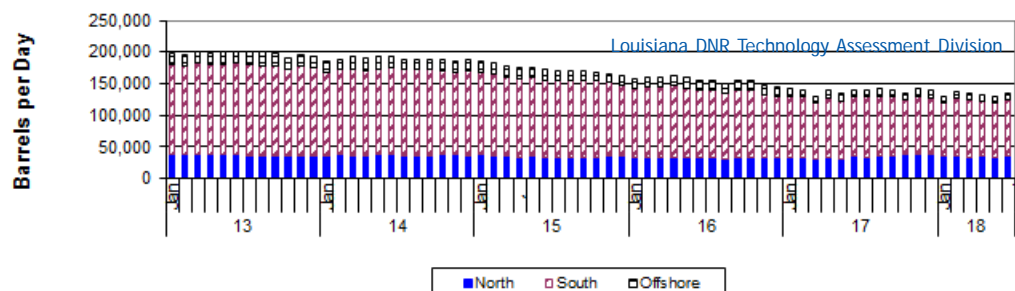
The June 2018 Louisiana natural gas average spot wellhead price was \$2.72/MMBTU, 11 cents less than last month and 15 cents less than the June 2017 average. The U.S. Energy Information Administration (EIA), in its June Short-Term Energy Outlook, expects Henry Hub spot prices to hold a bit above current levels this summer, averaging \$2.91/MMBTU during the second quarter and \$3.03/MMBTU in the third quarter. The EIA sees a \$2.99/MMBTU price for all of 2018, and rising to \$3.08/MMBTU in 2019. The EIA reported an injection of 66 BCF as of June 22, 2018, bringing the volume of working gas in storage to 2,074 BCF. The storage volume was 735 BCF lower than last year and 501 BCF lower than the five-year average.

### Louisiana Monthly Crude Oil & Condensate Production\*\*, Excluding Federal OCS

Month	2013	2014	2015	2016	2017	2018	% Change	
							16/17	17/18
January	199,020	184,399	184,614	156,569	141,692	128,547		-9.28%
February	195,357	188,542	183,851	160,996	129,436	136,258		5.27%
March	199,682	193,664	177,658	160,858	137,361	135,010 <sup>1</sup>		-1.71%
April	197,259	190,259	175,266	161,472	139,831	133,172 <sup>1</sup>		-4.76%
May	199,939	192,486	175,283	158,947	134,083	128,986 <sup>1</sup>		-3.80%
June	201,326	193,778	172,226	155,805	140,699 <sup>2</sup>	135,322 <sup>1</sup>		-3.82%
July	199,751	187,997	169,061	154,301	140,955 <sup>2</sup>		-8.65%	
August	199,333	189,138	169,145	148,825	141,252 <sup>2</sup>		-5.09%	
September	197,901	189,164	170,987	154,570	139,491 <sup>2</sup>		-9.76%	
October	191,332	188,548	168,469	153,738	135,138 <sup>2</sup>		-12.10%	
November	194,372	185,259	166,286	146,310	141,968 <sup>2</sup>		-2.97%	
December	192,847	187,379	163,060	143,840	138,629 <sup>2</sup>		-3.62%	
<b>Year Average</b>	<b>197,343</b>	<b>189,218</b>	<b>172,992</b>	<b>154,686</b>	<b>138,378<sup>2</sup></b>	<b>132,882<sup>*</sup></b>		

\* Partial Year

\*\*All data are revised; see July 2001 statistic changes explanation



## Current Oil & Gas Data

Louisiana DNR Technology Assessment Division

	JAN 18	DEC 17	NOV 17	JAN 17
<b>PRODUCTION</b>				
GOM CENTRAL FEDERAL OFFSHORE <sup>F</sup> (OCS)				
Crude Oil & Condensate (MMB)	46	45 <sup>2</sup>	48	51 <sup>2</sup>
Natural Gas & Casinghead (BCF)	68	68	71	94 <sup>2</sup>
<b>THE UNITED STATES TOTAL</b>				
Crude Oil & Condensate <sup>C</sup> (MMB)	310	311	303	291 <sup>2</sup>
Natural Gas & Casinghead <sup>C</sup> (BCF)	2,396	2,432	2,321	2,189 <sup>2</sup>
<b>IMPORTS</b>				
U.S. Crude Oil <sup>C</sup> (MMB)	248	241	229	261
U.S. Natural Gas <sup>C</sup> (BCF)	289	279 <sup>2</sup>	231 <sup>2</sup>	274 <sup>2</sup>
<b>BAKER HUGHES RIG COUNTS</b>				
U.S. Gas <sup>A</sup>	187	182	173	140
U.S. Oil <sup>A</sup>	750	748	738	542
U.S. Offshore <sup>A</sup>	18	19	20	24
U.S. Total <sup>A</sup>	937	930 <sup>2</sup>	911 <sup>2</sup>	683
<b>PRICES</b>				
<b>CRUDE OIL (\$/barrel)</b>				
OPEC Average <sup>C</sup> (F.O.B.)	64.83	62.13 <sup>2</sup>	59.83 <sup>2</sup>	49.22 <sup>2</sup>
U.S. Imports Average <sup>C</sup> (F.O.B.)	55.73	53.68 <sup>2</sup>	52.11 <sup>2</sup>	44.62 <sup>2</sup>
U.S. Wellhead Average <sup>C</sup>	62.25	56.98	55.19	48.19
Gulf OCS Wellhead Average <sup>C</sup>	61.88	58.22 <sup>2</sup>	55.09	47.67
State Severance Wellhead Average <sup>E</sup>	67.74	58.72 <sup>2</sup>	61.10 <sup>2</sup>	50.84 <sup>2</sup>
<b>NATURAL GAS (\$/MCF)</b>				
U.S. City Gates Average <sup>C</sup>	4.31	4.00	3.98	4.21 <sup>2</sup>
U.S. Imports Average <sup>C</sup> (F.O.B.)	4.40	3.26	2.52 <sup>2</sup>	3.75
U.S. Spot Market Average <sup>D</sup>	4.74	3.30	2.81	3.67
State Royalty Wellhead Average	3.62	2.90 <sup>2</sup>	2.94 <sup>2</sup>	3.51 <sup>2</sup>
NYMEX Henry Hub End of the Month Settle Gas Price <sup>B</sup> (\$/MMBTU)	2.74	3.07	2.75	3.93

### Key

### Data Sources

<b>1</b>	Estimated	<b>MCF</b>	Thousand Cubic Feet
<b>2</b>	Revised	<b>MMB</b>	Million Barrels
<b>BCF</b>	Billion Cubic Feet	<b>NA</b>	Not Available
<b>BTU</b>	British Thermal Unit	<b>OCS</b>	Outer Continental Shelf
<b>FO.B.</b>	Free on Board	<b>MMBTU</b>	Million British Thermal Units

<b>A</b>	Oil & Gas Journal	<b>D</b>	Natural Gas Week
<b>B</b>	Wall Street Journal	<b>E</b>	LA Dept of Revenue
<b>C</b>	U. S. Dept. of Energy	<b>F</b>	BOEM

**Note:** Unless otherwise specified, data is from the Louisiana Department of Natural Resources and excludes Federal OCS.

### Note from the Editors

**Louisiana Energy Facts** is published monthly by the Louisiana Department of Natural Resources, Technology Assessment Division as a public service to individuals interested in Louisiana energy activities. Content includes recent oil, gas and other energy statistics and a brief analysis of current trends.

**Louisiana Energy Facts** articles provide insight and information on subjects of special interest to our readers, and may announce relevant, forthcoming publications.

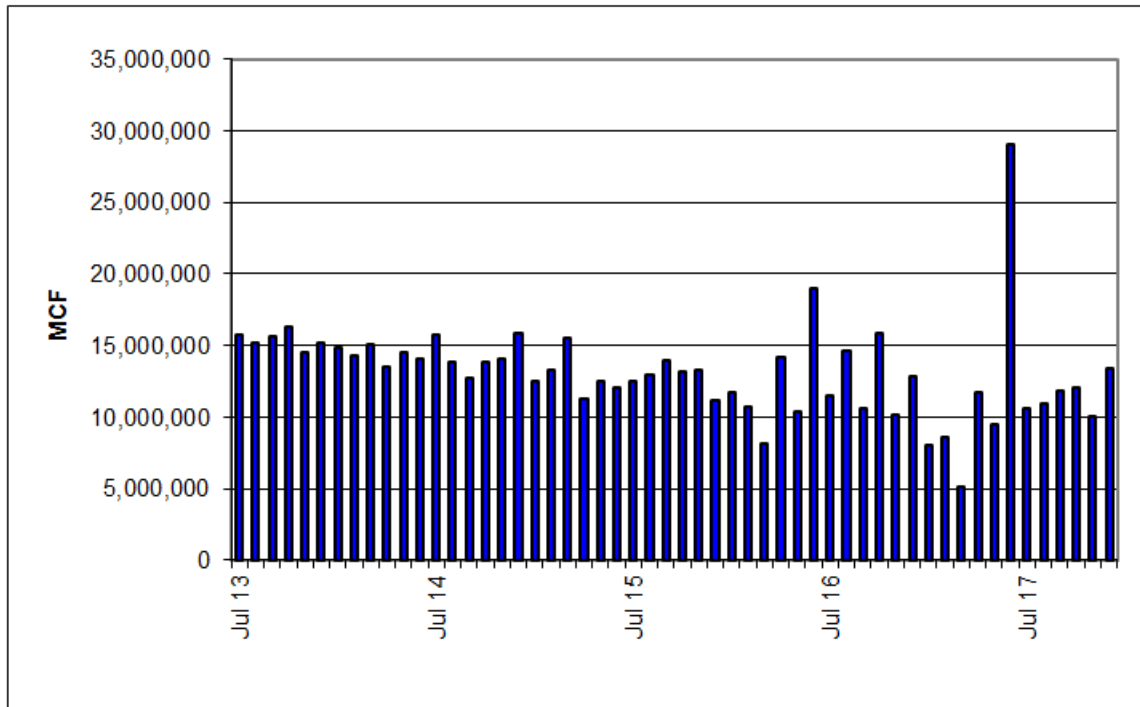
These documents are available on the Louisiana Department of Natural Resources, Technology Assessment Division home page:

<http://www.dnr.louisiana.gov/tad>. From the menu, select **Newsletters**. Our current online holdings include issues dating from 1998 through the present. If the issue you are seeking is unavailable, please contact us.

To request notification of when the **Louisiana Energy Facts** is available online, contact us at [techasmt@la.gov](mailto:techasmt@la.gov) with your name, title, company name, email address, and phone number. Please specify that you would like to be added to our email notification database for an electronic subscription.

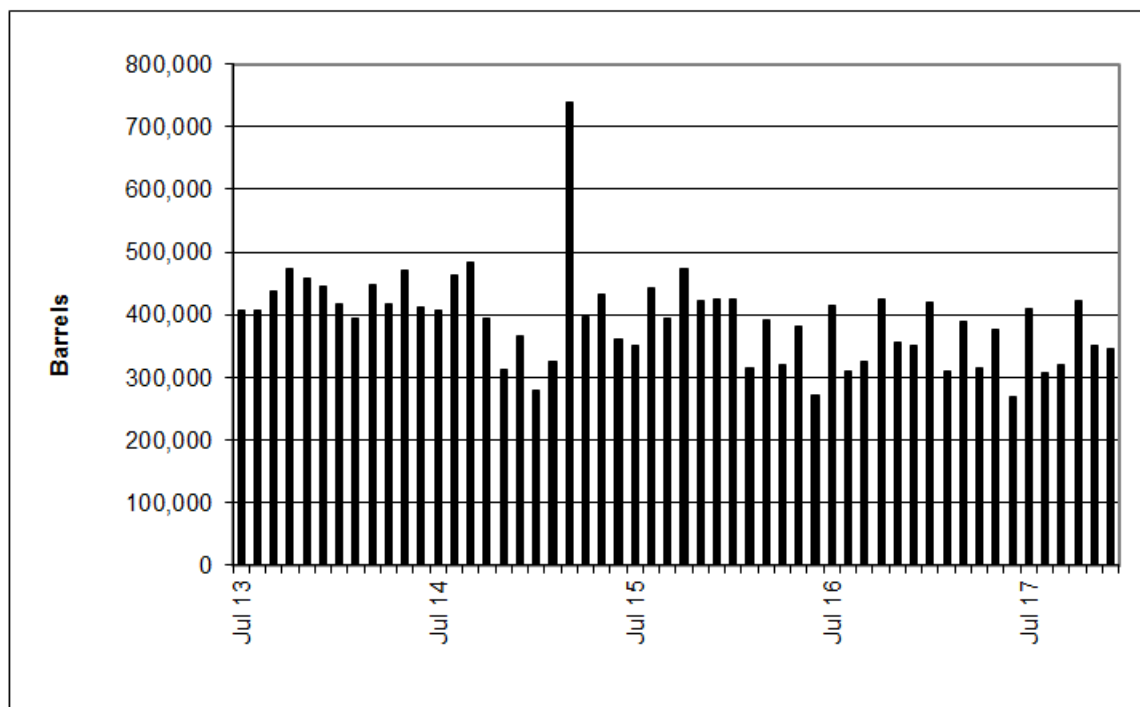
# Louisiana Natural Gas Production from Incapable Oil and Gas Wells<sup>E</sup>

Louisiana DNR Technology Assessment Division



# Louisiana Crude Oil Production from Stripper Wells<sup>E</sup>

Louisiana DNR Technology Assessment Division





**LOUISIANA DEPARTMENT OF NATURAL RESOURCES**

*Technology Assessment Division*

P. O. Box 94396

Baton Rouge, LA 70804-9396

**INSIDE**

**Highlights**  
page 1

**Louisiana Monthly  
Crude Oil &  
Condensate Production**  
page 1

**Current Oil & Gas Data**  
page 2

**Louisiana Natural Gas  
Production from Incapable  
Oil and Gas Wells**  
page 3

**Louisiana Crude Oil  
Production from  
Stripper Wells**  
page 3

**Quick Facts**  
page 4

**Featured Articles  
and Inserts**  
[Selected Louisiana  
Energy Statistics](#)

**Quick Facts**

**JULY 2018**

Louisiana DNR Technology Assessment Division

**SPOT MARKET PRICES**

	<b>Jun 18</b>	<b>May 18</b>	<b>Jun 17</b>
Louisiana Natural Gas <sup>D</sup> (\$/MMBTU)	2.72	2.61	2.87
NYMEX Henry Hub Last Settle Gas Price <sup>B</sup> (\$/MMBTU)	2.94	2.82 <sup>2</sup>	3.24
Louisiana Sweet Crude - St. James (\$/Barrel)	74.45	75.27	47.20 <sup>2</sup>

**BAKER HUGHES RIG COUNTS**

	<b>May 18</b>	<b>Apr 18</b>	<b>May 17</b>
North Louisiana <sup>A</sup>	37	34	37
South Louisiana Inland Waters <sup>A</sup>	3	4	4
South Louisiana Inland <sup>A</sup>	3	4	2
Louisiana State Offshore	0	0	0
Louisiana Federal OCS Offshore	18	16	20
Total Louisiana <sup>A</sup> (OCS included)	61	58	63

**PRODUCTION (State Jurisdiction Only)**

	<b>May 18</b>	<b>Apr 18</b>	<b>May 17</b>
Louisiana Crude Oil & Condensate (MMB)	4.0 <sup>1</sup>	4.0 <sup>1</sup>	4.2 <sup>2</sup>
Louisiana Natural Gas & Casinghead (BCF)	170.1 <sup>1</sup>	168.7 <sup>1</sup>	138.2 <sup>2</sup>

**DRILLING PERMITS (State Jurisdiction Only)**

	<b>May 18</b>	<b>Apr 18</b>	<b>May 17</b>
Total Louisiana Oil and Gas	81	60	52
Louisiana Wildcats	0	1	1
Louisiana Offshore (Wildcats included)	0	0	0