

LOUISIANA ENERGY FACTS

Louisiana Department of Natural Resources
Technology Assessment Division

www.dnr.louisiana.gov/tad

INSIDE

Highlights
page 1

**Louisiana Monthly
Crude Oil &
Condensate Production**
page 1

Current Oil & Gas Data
page 2

**Louisiana Natural Gas
Production from Incapable
Oil and Gas Wells**
page 3

**Louisiana Crude Oil
Production from
Stripper Wells**
page 3

Quick Facts
page 4

**Featured Articles
and Inserts**
[Selected Louisiana
Energy Statistics](#)



Department of Natural
Resources

Thomas Harris, Secretary

Technology Assessment
Division

Jason Lanclos, Director
Edward O'Brien, Economist

617 North Third Street
Baton Rouge, LA 70802

Tel. (225) 342-1270
Fax. (225) 242-1397
Email: techasmt@la.gov
www.dnr.louisiana.gov/tad

Highlights JULY 2019

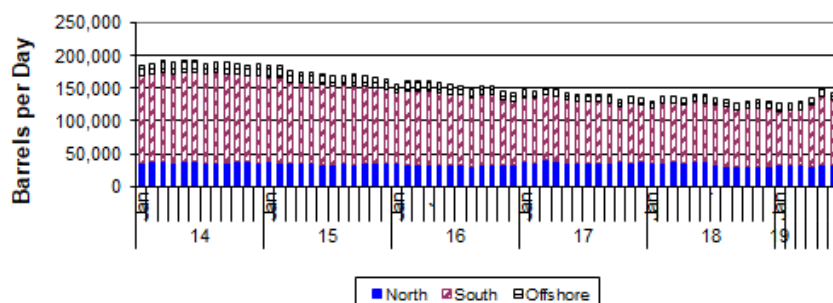
Louisiana natural gas June average spot wellhead price was \$2.34/MMBTU, 25¢ less than last month and 59¢ less than June 2018, average. The US Energy Information Administration (EIA), in its June Short-Term Energy Outlook, expects Henry Hub spot prices to trend downwards. The EIA sees a \$2.77/MMBTU price for full-year 2019, and maintaining that same rate in 2020. The EIA reported an injection of 98 BCF as of June 21, bringing the volume of working gas in storage to 2,301 BCF. The storage volume was 236 BCF higher than last year, and it was 171 BCF lower than five-year average.

Louisiana Monthly Crude Oil & Condensate Production**, Excluding Federal OCS

Month	2014	2015	2016	2017	2018	2019	% Change	
							17/18	18/19
January	184,399	184,614	156,569	141,692 ²	128,796	126,653		-1.66%
February	188,542	183,851	160,996	129,436 ²	136,751	127,524		-6.75%
March	193,664	177,658	160,858	137,361 ²	140,048	128,755 ¹		-8.06%
April	190,259	175,266	161,472	139,831 ²	135,433	135,983 ¹		0.41%
May	192,486	175,283	158,947	144,160 ²	140,145	149,588 ¹		6.74%
June	193,778	172,226	155,805	140,710 ²	139,485	143,461 ¹		2.85%
July	187,997	169,061	154,301	140,982 ²	134,897		-4.32%	
August	189,138	169,145	148,825	141,247 ²	132,748		-6.02%	
September	189,164	170,987	154,570	139,503 ²	128,141		-8.14%	
October	188,548	168,469	153,738	132,572 ²	130,076		-1.88%	
November	185,259	166,286	146,310	138,872 ²	131,726		-5.15%	
December	187,379	163,060	143,840	135,732 ²	130,871		-3.58%	
Year Average	189,218	172,992	154,686	138,508²	134,093			

* Partial Year

**All data are revised; see July 2001 statistic changes explanation



Louisiana DNR Technology Assessment Division

Current Oil & Gas Data

Louisiana DNR Technology Assessment Division

	JAN 19	DEC 18	NOV 18	JAN 18
PRODUCTION				
GOM CENTRAL FEDERAL OFFSHORE ^F (OCS)				
Crude Oil & Condensate (MMB)	57	57	56	48 ²
Natural Gas & Casinghead (BCF)	85	83	82	68
THE UNITED STATES TOTAL				
Crude Oil & Condensate ^C (MMB)	368	371	358	310
Natural Gas & Casinghead ^C (BCF)	2,955	2,957	2,855	2,587 ²
IMPORTS				
U.S. Crude Oil ^C (MMB)	233	220	224	248
U.S. Natural Gas ^C (BCF)	291	257	212	300 ²
BAKER HUGHES RIG COUNTS				
U.S. Gas ^A	199	198	193	187
U.S. Oil ^A	866	880	884	750
U.S. Offshore ^A	21	24	23	18
U.S. Total ^A	1,065	1,078	1,077	937
PRICES				
CRUDE OIL (\$/barrel)				
OPEC Average ^C (F.O.B.)	55.22	53.04	60.58	64.12 ²
U.S. Imports Average ^C (F.O.B.)	48.72	36.91	44.66	55.73
U.S. Wellhead Average ^C	47.85	47.63	55.65	62.25
Gulf OCS Wellhead Average ^C	54.13	58.94	67.76	61.88
State Severance Wellhead Average ^E	56.29	47.28	57.97	67.74
NATURAL GAS (\$/MCF)				
U.S. City Gates Average ^C	4.09	4.75	4.29	4.29 ²
U.S. Imports Average ^C (F.O.B.)	4.30	4.89	4.10	4.41 ²
U.S. Spot Market Average ^D	3.46	4.07	3.87	4.74
State Royalty Wellhead Average	3.20	4.06	3.58 ²	3.38 ²
NYMEX Henry Hub End of the Month Settle Gas Price ^B (\$/MMBTU)	3.64	4.72	3.19	2.74

Key				Data Sources			
1	Estimated	MCF	Thousand Cubic Feet	A	Oil & Gas Journal	D	Natural Gas Week
2	Revised	MMB	Million Barrels	B	Wall Street Journal	E	LA Dept of Revenue
BCF	Billion Cubic Feet	NA	Not Available	C	U. S. Dept. of Energy	F	BOEM
BTU	British Thermal Unit	OCS	Outer Continental Shelf	Note: Unless otherwise specified, data is from the Louisiana Department of Natural Resources and excludes Federal OCS.			
FO.B.	Free on Board	MMBTU	Million British Thermal Units				

Note from the Editors

Louisiana Energy Facts is published monthly by the Louisiana Department of Natural Resources, Technology Assessment Division as a public service to individuals interested in Louisiana energy activities. Content includes recent oil, gas and other energy statistics and a brief analysis of current trends.

Louisiana Energy Facts articles provide insight and information on subjects of special interest to our readers, and may announce relevant, forthcoming publications.

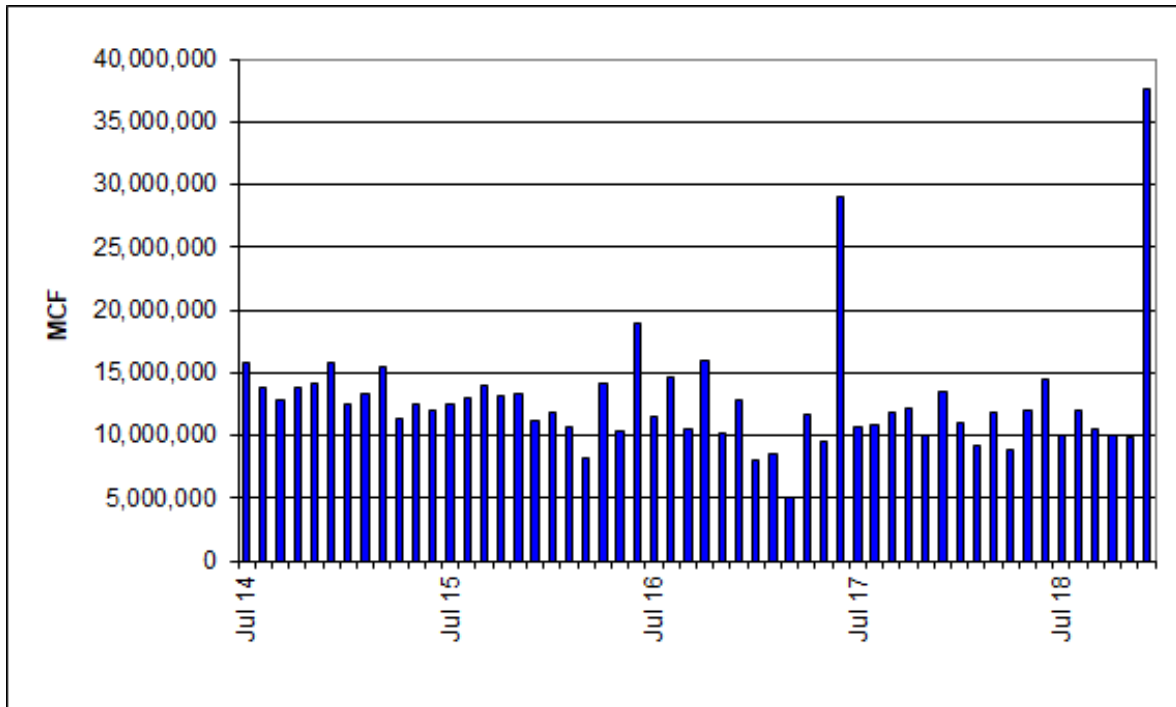
These documents are available on the Louisiana Department of Natural Resources, Technology Assessment Division home page:

<http://www.dnr.louisiana.gov/tad>. From the menu, select **Newsletters**. Our current online holdings include issues dating from 1998 through the present. If the issue you are seeking is unavailable, please contact us.

To request notification of when the **Louisiana Energy Facts** is available online, contact us at techasmt@la.gov with your name, title, company name, email address, and phone number. Please specify that you would like to be added to our email notification database for an electronic subscription.

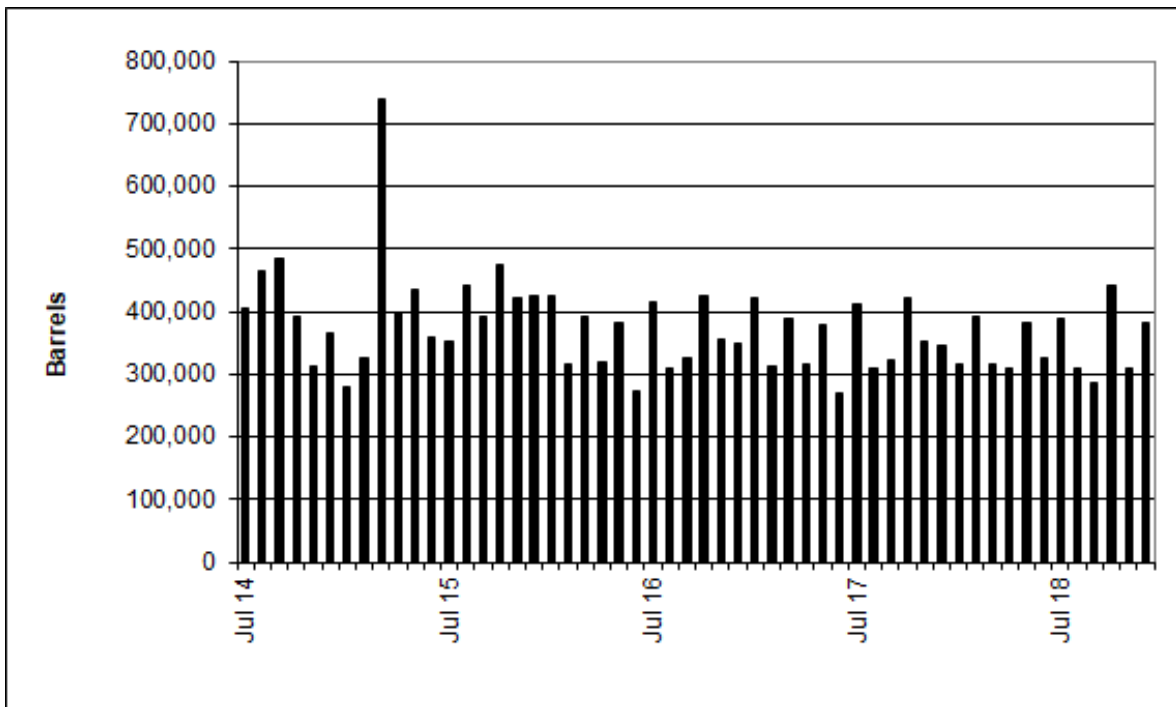
Louisiana Natural Gas Production from Incapable Oil and Gas Wells^E

Louisiana DNR Technology Assessment Division



Louisiana Crude Oil Production from Stripper Wells^E

Louisiana DNR Technology Assessment Division





LOUISIANA DEPARTMENT OF NATURAL RESOURCES

Technology Assessment Division

P. O. Box 94396

Baton Rouge, LA 70804-9396

INSIDE

Highlights
page 1

**Louisiana Monthly
Crude Oil &
Condensate Production**
page 1

Current Oil & Gas Data
page 2

**Louisiana Natural Gas
Production from Incapable
Oil and Gas Wells**
page 3

**Louisiana Crude Oil
Production from
Stripper Wells**
page 3

Quick Facts
page 4

**Featured Articles
and Inserts**
[Selected Louisiana
Energy Statistics](#)

Quick Facts

JULY 2019

Louisiana DNR Technology Assessment Division

SPOT MARKET PRICES

	Jun 19	May 19	Jun 18
Louisiana Natural Gas ^D (\$/MMBTU)	2.19	2.34	2.72
NYMEX Henry Hub Last Settle Gas Price ^B (\$/MMBTU)	2.34	2.59 ²	2.94
Louisiana Sweet Crude - St. James (\$/Barrel)	61.30	68.98	74.45

BAKER HUGHES RIG COUNTS

	May 19	Apr 19	May 18
North Louisiana ^A	35	38	37
South Louisiana Inland Waters ^A	4	3	3
South Louisiana Inland ^A	4	3	3
Louisiana State Offshore	1	1	0
Louisiana Federal OCS Offshore	19	19	18
Total Louisiana ^A (OCS included)	63	64	61

PRODUCTION (State Jurisdiction Only)

	May 19	Apr 19	May 18
Louisiana Crude Oil & Condensate (MMB)	4.6 ¹	4.0 ²	4.3
Louisiana Natural Gas & Casinghead (BCF)	231.4 ¹	227.0 ²	236.6

DRILLING PERMITS (State Jurisdiction Only)

	May 19	Apr 19	May 18
Total Louisiana Oil and Gas	64	42	81
Louisiana Wildcats	1	2	0
Louisiana Offshore (Wildcats included)	0	0	0