

# LOUISIANA ENERGY FACTS

Louisiana Department of Natural Resources  
Technology Assessment Division

[www.dnr.louisiana.gov/tad](http://www.dnr.louisiana.gov/tad)

## INSIDE

**Highlights**  
page 1

**Louisiana Natural Gas and Casinghead Production**  
page 1

**Current Oil & Gas Data**  
page 2

**Louisiana Mineral Royalty Revenue by Source**  
page 3

**Louisiana Mineral Severance Tax Revenue by Source**  
page 3

**Quick Facts**  
page 4

**Featured Articles and Inserts**

HIGHLIGHTS OF THE 23rd  
EDITION OF THE  
LOUISIANA CRUDE OIL  
REFINERY SURVEY  
REPORT



Department of Natural Resources

Thomas Harris, Secretary

Technology Assessment Division

Jason Lanclos, Director  
Edward O'Brien, Economist

617 North Third Street  
Baton Rouge, LA 70802

Tel. (225) 342-1270  
Fax. (225) 242-1397  
Email: [techasmt@la.gov](mailto:techasmt@la.gov)  
[www.dnr.louisiana.gov/tad](http://www.dnr.louisiana.gov/tad)

## Highlights

## AUGUST 20

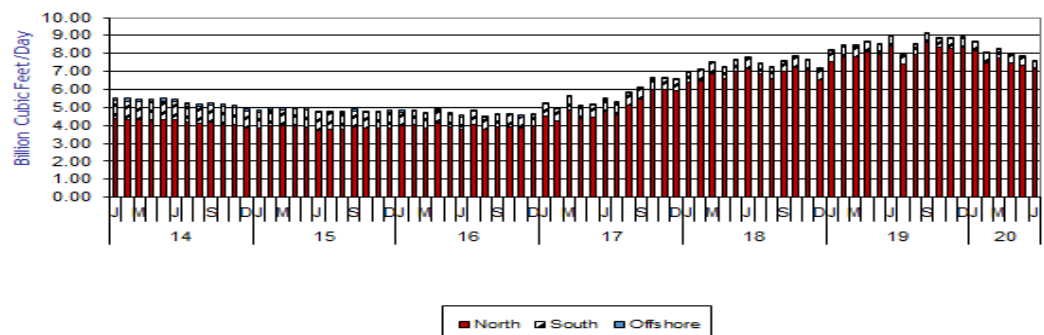
West Texas Intermediate (WTI) crude oil spot price is floating around \$40 per barrel. On July 31, 2020, WTI settled at \$40.27 per barrel. The recent EIA forecasts expects WTI prices to average lower than \$50 per barrel in 2020. Brent crude prices are expected to have a premium as compared to WTI prices, seeing \$50 for the rest of 2020. The EIA has a neutral outlook for the end of 2020, with the second half of the year flat on price, but supply remaining elevated throughout 2021. The most uncertainty dealing with supply, and ultimately price, remains with the global economic rebound from the corona virus and the 2020 US Presidential election happening in November. The supply is the key issue, with demand far below the amount of oil on the market.

### Louisiana Natural Gas and Casinghead Production\*\*, Excluding Federal OCS

Month	(Billion Cubic Feet/Day)						% Change	
	2015	2016	2017	2018	2019	2020	18/19	19/20
January	4.86	4.84	5.23	7.00	8.19	8.65		5.58%
February	4.99	4.88	4.98	7.11	8.48	8.03		-5.23%
March	4.99	4.72	5.63	7.56	8.46	8.24		-2.61%
April	5.02	4.94	5.13	7.23	8.70	7.98		-8.29%
May	4.97	4.72	5.17	7.63	8.51	7.83		-8.02%
June	4.80	4.57	5.50	7.81	8.98	7.58		-15.57%
July	4.82	4.86	5.29	7.49	7.92		5.75%	
August	4.81	4.51	5.83	7.26	8.50		17.10%	
September	4.91	4.68	6.15	7.63	9.15		19.94%	
October	4.81	4.66	6.68	7.86	8.85		12.69%	
November	4.79	4.56	6.66	7.68	8.86		15.37%	
December	4.84	4.68	6.59	7.19	8.92		24.10%	
<b>Year Average</b>	<b>5.33</b>	<b>4.72</b>	<b>5.74</b>	<b>7.45</b>	<b>7.61</b>	<b>8.05**</b>		

\*\* Partial Year

Louisiana DNR Technology Assessment Division



## Current Oil & Gas Data

Louisiana DNR Technology Assessment Division

	FEB 20	JAN 20	DEC 19	FEB 19
<b>PRODUCTION</b>				
GOM CENTRAL FEDERAL OFFSHORE <sup>F</sup> (OCS)				
Crude Oil & Condensate (MMB)	46	58	59	46
Natural Gas & Casinghead (BCF)	72	81	81	72
<b>THE UNITED STATES TOTAL</b>				
Crude Oil & Condensate <sup>C</sup> (MMB)	369	396	385	327
Natural Gas & Casinghead <sup>C</sup> (BCF)	2,950	3,173	3,194	2,696
<b>IMPORTS</b>				
U.S. Crude Oil <sup>C</sup> (MMB)	189	199	212	186
U.S. Natural Gas <sup>C</sup> (BCF)	238	262	256	233
<b>BAKER HUGHES RIG COUNTS</b>				
U.S. Gas <sup>A</sup>	110	118	128	195
U.S. Oil <sup>A</sup>	680	674	676	853
U.S. Offshore <sup>A</sup>	23	23	22	20
U.S. Total <sup>A</sup>	790	792	804	1,048
<b>PRICES</b>				
<b>CRUDE OIL (\$/barrel)</b>				
OPEC Average <sup>C</sup> (F.O.B.)	53.00	53.02	63.52	63.09
U.S. Imports Average <sup>C</sup> (F.O.B.)	46.98	46.98	51.57	54.14
U.S. Wellhead Average <sup>C</sup>	50.03	56.86	58.41	52.51
Gulf OCS Wellhead Average <sup>C</sup>	53.70	57.52	58.63	56.33
State Severance Wellhead Average <sup>E</sup>	54.90	63.57	63.94	62.39
<b>NATURAL GAS (\$/MCF)</b>				
U.S. City Gates Average <sup>C</sup>	3.09	3.27	3.49	3.74
U.S. Imports Average <sup>C</sup> (F.O.B.)	3.23	2.92	3.23	3.90
U.S. Spot Market Average <sup>D</sup>	1.94	2.08	2.40	3.40
State Royalty Wellhead Average	1.70	1.88	2.19	2.71
NYMEX Henry Hub End of the Month Settle Gas Price <sup>B</sup> (\$/MMBTU)	1.89	88.00	2.47	2.95

### Key

<b>1</b>	Estimated	<b>MCF</b>	Thousand Cubic Feet
<b>2</b>	Revised	<b>MMB</b>	Million Barrels
<b>BCF</b>	Billion Cubic Feet	<b>NA</b>	Not Available
<b>BTU</b>	British Thermal Unit	<b>OCS</b>	Outer Continental Shelf
<b>FO.B.</b>	Free on Board	<b>MMBTU</b>	Million British Thermal Units

### Data Sources

<b>A</b>	Oil & Gas Journal	<b>D</b>	Natural Gas Week
<b>B</b>	Wall Street Journal	<b>E</b>	LA Dept of Revenue
<b>C</b>	U. S. Dept. of Energy	<b>F</b>	BOEM

**Note:** Unless otherwise specified, data is from the Louisiana Department of Natural Resources and excludes Federal OCS.

### Note from the Editors

**Louisiana Energy Facts** is published monthly by the Louisiana Department of Natural Resources, Technology Assessment Division as a public service to individuals interested in Louisiana energy activities. Content includes recent oil, gas and other energy statistics and a brief analysis of current trends.

**Louisiana Energy Facts** articles provide insight and information on subjects of special interest to our readers, and may announce relevant, forthcoming publications.

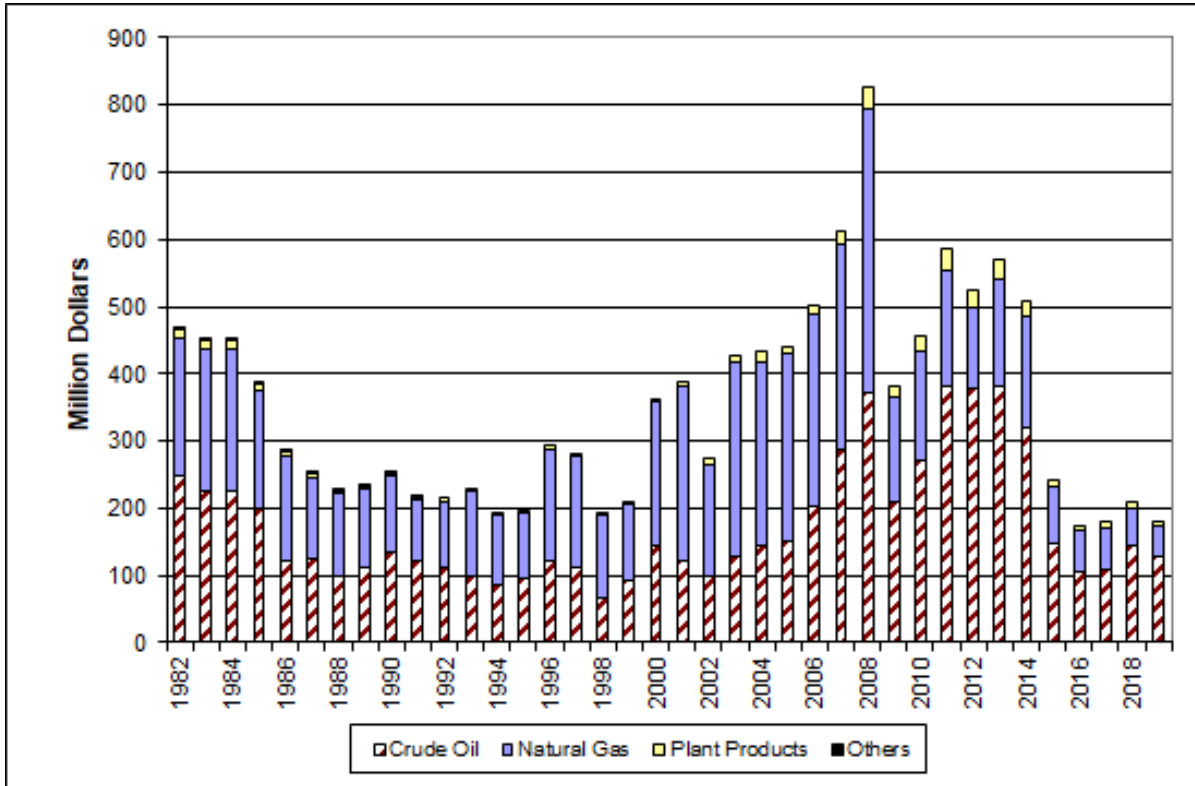
These documents are available on the Louisiana Department of Natural Resources, Technology Assessment Division home page:

<http://www.dnr.louisiana.gov/tad>. From the menu, select **Newsletters**. Our current online holdings include issues dating from 1998 through the present. If the issue you are seeking is unavailable, please contact us.

To request notification of when the **Louisiana Energy Facts** is available online, contact us at [techasmt@la.gov](mailto:techasmt@la.gov) with your name, title, company name, email address, and phone number. Please specify that you would like to be added to our email notification database for an electronic subscription.

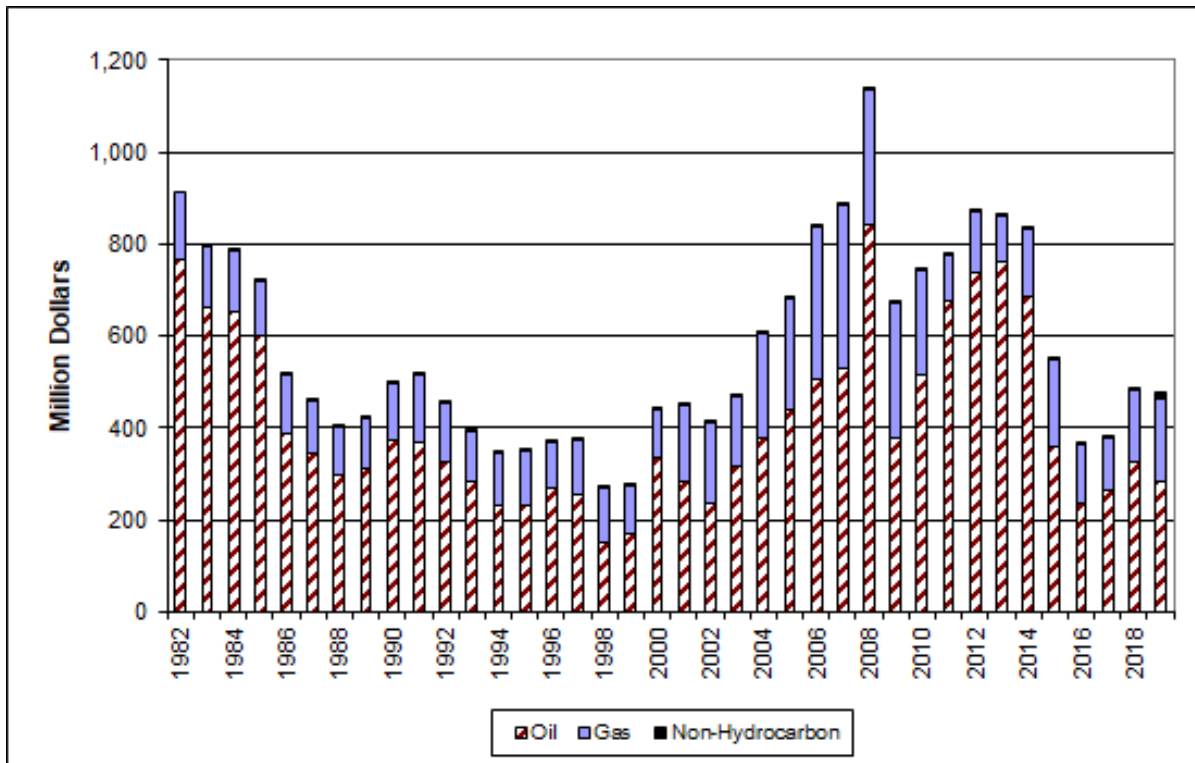
# Louisiana Mineral Royalty Revenue by Source, Excluding Federal OCS

Louisiana DNR Technology Assessment Division



# Louisiana Mineral Severance Tax Revenue by Source, Excluding Federal OCS

Louisiana DNR Technology Assessment Division





LOUISIANA DEPARTMENT OF NATURAL RESOURCES

Technology Assessment Division

P. O. Box 94396

Baton Rouge, LA 70804-9396

**INSIDE**

**Highlights**  
page 1

**Louisiana Natural Gas and Casinghead Production**  
page 1

**Current Oil & Gas Data**  
page 2

**Louisiana Mineral Royalty Revenue by Source**  
page 3

**Louisiana Mineral Severance Tax Revenue by Source**  
page 3

**Quick Facts**  
page 4

**Featured Articles and Inserts**  
HIGHLIGHTS OF THE 23rd EDITION OF THE LOUISIANA CRUDE OIL REFINERY SURVEY REPORT

**Quick Facts**

**AUGUST 2020**

Louisiana DNR Technology Assessment Division

**SPOT MARKET PRICES**

Louisiana Natural Gas<sup>D</sup> (\$/MMBTU)  
 NYMEX Henry Hub Last Settle Gas Price<sup>B</sup> (\$/MMBTU)  
 Louisiana Sweet Crude - St. James<sup>B</sup> (\$/Barrel)

Jul 20	Jun 20	Jul 19
1.61	1.58	2.29
1.71	1.58	2.31
42.35	39.48	62.87

**BAKER HUGHES RIG COUNTS**

North Louisiana<sup>A</sup>  
 South Louisiana Inland Waters<sup>A</sup>  
 South Louisiana Inland<sup>A</sup>  
 Louisiana State Offshore  
 Louisiana Federal OCS Offshore  
 Total Louisiana<sup>A</sup> (OCS included)

Jun 20	May 20	Jun 19
21	22	36
0	0	4
0	1	7
0	0	1
12	13	22
33	36	70

**PRODUCTION (State Jurisdiction Only)**

Louisiana Crude Oil & Condensate (MMB)  
 Louisiana Natural Gas & Casinghead (BCF)

Jun 20	May 20	Jun 19
3.5 <sup>1</sup>	3.5 <sup>1</sup>	4.3
245.9 <sup>1</sup>	242.6 <sup>1</sup>	260.8

**DRILLING PERMITS (State Jurisdiction Only)**

Total Louisiana Oil and Gas  
 Louisiana Wildcats  
 Louisiana Offshore (Wildcats included)

Jun 20	May 20	Jun 19
32	22	64
0	0	1
0	0	0