

# Louisiana Energy Facts

**INSIDE THIS ISSUE:**

Highlights  
page 1

Oil and Gas Permits  
Issued by the State of  
Louisiana  
page 1

Permit Data  
page 2

Louisiana Energy  
Facts Index of  
Previous Issues  
page 3

Quick Facts  
page 4



Department of Natural  
Resources  
*Thomas Harris, Secretary*

Technology Assessment  
Division  
*Jason Lanclos, Director*  
*Edward O'Brien, Economist*

617 North Third Street Baton  
Rouge, LA 70802

Tel. (225) 342-1270 Fax.  
(225) 242-1397 Email:

techasmt@la.gov  
www.dnr.louisiana.gov/tad

## Highlights

The average number of active drilling rigs in the U.S. is increasing year-over-year, according to Baker Hughes Inc. data. In November 2021, the average active drilling rig count in the U.S. was 538, a 128% increase from November 2020; while in Louisiana State

lands and water, the average active drilling rigs count was 36, a 33% increase from November 2020. The increase occurred due to higher demand due to the restrictions lifted from the pandemic. The November average spot price for Louisiana Light Sweet crude oil was \$79.42

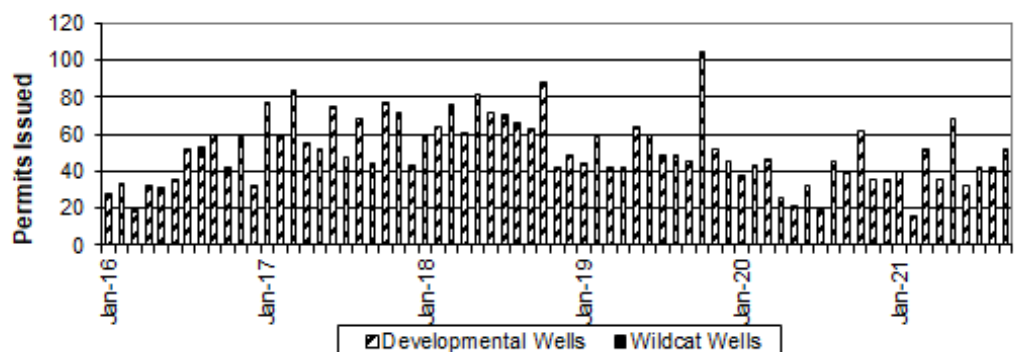
## December 2021

per barrel, an 87% increase from November 2020, when it was \$42.43. The November average gas spot price was \$5.02 per MMBTU in Louisiana, 94% higher than in November 2020, when it was \$2.59 per MMBTU.

### Oil and Gas Drilling Permits Issued by the State of Louisiana

Month	Permits Issued						% Change	
	2016	2017	2018	2019	2020	2021	19/20	20/21
January	28	77	59	44	38	40		5.26%
February	33	59	64	58	43	16		-62.79%
March	19	84	76	42	45	52		15.56%
April	32	55	60	42	26	35		34.62%
May	31	52	81	64	21	68		223.81%
June	35	75	72	60	32	32		0.00%
July	52	47	70	48	19	42		121.05%
August	53	68	66	48	45	42		-6.67%
September	60	44	63	45	40	52		30.00%
October	42	77	88	104	62		-40.38%	
November	58	72	42	52	35		-32.69%	
December	32	43	49	45	36		-20.00%	
<b>Year Average</b>	<b>40</b>	<b>63</b>	<b>70</b>	<b>56</b>	<b>34</b>	<b>42*</b>		

\* Partial Year



## Current Oil &amp; Gas Data

Louisiana DNR Technology Assessment Division

	JUN 21	MAY 21	APR 21	JUN 20
<b>PRODUCTION</b>				
GOM CENTRAL FEDERAL OFFSHORE <sup>F</sup> (OCS)				
Crude Oil & Condensate (MMB)	50	53	51	44
Natural Gas & Casinghead (BCF)	64	69	66	60
THE UNITED STATES TOTAL				
Crude Oil & Condensate <sup>C</sup> (MMB)	448	351	337	313
Natural Gas & Casinghead <sup>C</sup> (BCF)	3,028	3,119	3,025	2,876
<b>IMPORTS</b>				
U.S. Crude Oil <sup>C</sup> (MMB)	198	181	175	192
U.S. Natural Gas <sup>C</sup> (BCF)	208	205	208	190
<b>BAKER HUGHES RIG COUNTS</b>				
U.S. Gas <sup>A</sup>	97	100	94	76
U.S. Oil <sup>A</sup>	367	353	342	217
U.S. Offshore <sup>A</sup>	13	14	12	12
U.S. Total <sup>A</sup>	464	453	436	293
<b>PRICES</b>				
CRUDE OIL (\$/barrel)				
OPEC Average <sup>C</sup> (F.O.B.)	71.60	63.76	64.57	41.40
U.S. Imports Average <sup>C</sup> (F.O.B.)	64.97	57.48	57.53	32.41
U.S. Wellhead Average <sup>C</sup>	70.12	62.80	59.87	33.53
Gulf OCS Wellhead Average <sup>C</sup>	68.53	53.27	61.25	31.76
State Severance Wellhead Average <sup>E</sup>	57.30	66.14	47.41	37.94
NATURAL GAS (\$/MCF)				
U.S. City Gates Average <sup>C</sup>	4.87	4.34	3.84	3.85
U.S. Imports Average <sup>C</sup> (F.O.B.)	2.83	2.76	2.44	1.57
U.S. Spot Market Average <sup>D</sup>	3.03	3.01	2.71	1.58
State Royalty Wellhead Average	3.02	2.71	2.42	1.33
NYMEX Henry Hub End of the Month Settle Gas Price <sup>B</sup> (\$/MMBTU)	2.98	2.93 <sup>2</sup>	2.59 <sup>2</sup>	1.72

**Key**

1	Estimated	MCF	Thousand Cubic Feet
2	Revised	MMB	Million Barrels
BCF	Billion Cubic Feet	N/A	Not Available
BTU	British Thermal Unit	OCS	Outer Continental Shelf
F.O.B	Free on Board	MMBTU	Million British Thermal Units

**Data Sources**

A	Oil & Gas Journal	D	Natural Gas Week
B	Wall Street Journal	E	LA Dept of Revenue
C	U. S. Dept. of Energy	F	BOEM

**Note:** Unless otherwise specified, data is from the Louisiana Department of Natural Resources and excludes Federal OCS.

**Note from the Editors**

**Louisiana Energy Facts** is published monthly by the Louisiana Department of Natural Resources, Technology Assessment Division as a public service to individuals interested in Louisiana energy activities. Content includes recent oil, gas and other energy statistics and a brief analysis of current trends.

**Louisiana Energy Facts** articles provide insight and information on subjects of special interest to our readers, and may announce relevant, forthcoming publications.

These documents are available on the Louisiana Department of Natural Resources, Technology Assessment Division home page: <http://www.dnr.louisiana.gov/tad>. From the menu, select Newsletters. Our current online holdings include issues dating from 1998 through the present. If the issue you are seeking is unavailable, please contact us.

To request notification of when the **Louisiana Energy Facts** is available online, contact us at [techasm@la.gov](mailto:techasm@la.gov) with your name, title, company name, email address, and phone number. Please specify that you would like to be added to our email notification database for an electronic subscription.

# Louisiana Energy Facts

## LOUISIANA ENERGY FACTS INDEX OF PREVIOUS ISSUES

<u>LIST OF TABLES</u>	<u>MONTH PUBLISHED</u>
<b>Page 1</b>	
Louisiana Monthly Crude Oil and Condensate Production, Excluding Federal OCS	January & July
Louisiana Natural Gas and Casinghead Production, Excluding Federal OCS	February & August
Louisiana Natural Gas Average Spot Prices	March & October
Light Louisiana Sweet Crude Oil Average Spot Price at St. James	April & September
Oil & Gas Drilling Permits Issued by the State of Louisiana	May & December
Louisiana Average Active Rigs in Areas Under State Jurisdiction	June & November
<b>Page 2</b>	
Current Oil and Gas Data	January - December
<b>Page 3</b>	
Louisiana Crude Oil and Condensate Production, Excluding Federal OCS	January
Louisiana Natural Gas and Casinghead Gas Production, Excluding Federal OCS	January
Louisiana and the United States Active Rig Counts	February
Natural Gas Average Prices (U.S. and Louisiana)	March
Average Crude Oil Prices (U.S. and Louisiana)	April
2019 Louisiana State Producing Oil Wells, by Production Rate, OCS Wells Excluded	May
2019 Louisiana State Producing Gas Wells, by Production Rate, OCS Wells Excluded	May
Louisiana Non-Agricultural Employment	June
Louisiana Estimated Crude Oil Proved Reserves, Excluding Lease Condensate	September
Louisiana Estimated Lease Condensate Proved Reserves	September
Louisiana Estimated Dry Natural Gas Proved Reserves	October
Louisiana Estimated Natural Gas Liquids Proved Reserves, Excluding Lease Condensate	October
Louisiana Estimated Crude Oil Imports and Exports	November
Louisiana Estimated Natural Gas Imports and Exports	November
<u>LIST OF FIGURES</u>	<u>MONTH PUBLISHED</u>
<b>Page 1</b>	
Louisiana Crude Oil & Condensate Production, Excluding Federal OCS	January & July
Louisiana Natural Gas and Casinghead Production, Excluding Federal OCS	February & August
Louisiana Natural Gas Average Spot Prices	March & October
Light Louisiana Sweet Crude Oil Average Spot Price at St. James	April & September
Oil & Gas Drilling Permits Issued by the State of Louisiana	May & December
Louisiana Average Active Rigs in Areas Under State Jurisdiction	June & November
<b>Page 3</b>	
Natural Gas Average Prices	March
Average Crude Oil Prices	April
Louisiana Natural Gas Production from Incapable Oil and Gas Wells	July
Louisiana Crude Oil Production from Stripper Wells	July
Louisiana Mineral Severance Tax Revenue by Source, Excluding Federal OCS	August
Louisiana Mineral Royalty Revenue by Source, Excluding Federal OCS	August
<b>2020 LOUISIANA ENERGY TOPICS</b>	
Louisiana Revolving Loan Fund Program	January
Local Non-Profit Celebrates 20 Years of Reducing Louisiana's Transportation Emissions	February
2021 State Oil and Gas: Production and Price Projections	March
Selected Louisiana Energy Statistics	July
Highlights of the 25th Edition of the Louisiana Crude Oil Refinery Survey Report	August
Louisiana State Gas Production	November
2022 Service Questionnaire	December

## Quick Facts

## December 2021

Louisiana DNR Technology Assessment Division

**Department of Natural Resources**

*Thomas Harris, Secretary*

**Technology Assessment Division**

*Jason Lanclos, Director*  
*Edward O'Brien, Economist*

617 North Third Street  
Baton Rouge, LA 70802

Tel. (225) 342-1270 Fax.  
(225) 242-1397 Email:

[techasmt@la.gov](mailto:techasmt@la.gov)  
[www.dnr.louisiana.gov/tad](http://www.dnr.louisiana.gov/tad)

**SPOT MARKET PRICES**

Louisiana Natural Gas<sup>D</sup> (\$/MMBTU)

NYMEX Henry Hub Last Settle Gas Price<sup>B</sup> (\$/MMBTU)

Louisiana Sweet Crude - St. James<sup>B</sup> (\$/Barrel)

**BAKER HUGHES RIG COUNTS**

North Louisiana<sup>A</sup>

South Louisiana Inland Waters<sup>A</sup>

South Louisiana Inland<sup>A</sup>

Louisiana State Offshore

Louisiana Federal OCS Offshore

Total Louisiana<sup>A</sup> (OCS included)

**PRODUCTION (State Jurisdiction Only)**

Louisiana Crude Oil & Condensate (MMB)

Louisiana Natural Gas & Casinghead (BCF)

**DRILLING PERMITS (State Jurisdiction Only)**

Total Louisiana Oil and Gas

Louisiana Wildcats

Louisiana Offshore (Wildcats included)

	Nov 21	Oct 21	Nov 20
Louisiana Natural Gas <sup>D</sup> (\$/MMBTU)	4.95	5.35	2.48
NYMEX Henry Hub Last Settle Gas Price <sup>B</sup> (\$/MMBTU)	5.02	5.48	2.59
Louisiana Sweet Crude - St. James <sup>B</sup> (\$/Barrel)	79.42	82.29	42.43
	Oct 21	Sep 21	Oct 20
North Louisiana <sup>A</sup>	34	34	25
South Louisiana Inland Waters <sup>A</sup>	1	1	1
South Louisiana Inland <sup>A</sup>	1	1	1
Louisiana State Offshore	0	0	0
Louisiana Federal OCS Offshore	11	4	12
Total Louisiana <sup>A</sup> (OCS included)	47	40	39
	Oct 21	Sep 21	Oct 20
Louisiana Crude Oil & Condensate (MMB)	3.3 <sup>1</sup>	3.2 <sup>1</sup>	2.7 <sup>2</sup>
Louisiana Natural Gas & Casinghead (BCF)	292.6 <sup>1</sup>	289.7 <sup>1</sup>	258.3 <sup>2</sup>
	Oct 21	Sep 21	Oct 20
Total Louisiana Oil and Gas	51	52	62
Louisiana Wildcats	0	1	0
Louisiana Offshore (Wildcats included)	0	1	1

