

# Louisiana Energy Facts

July 2021

**INSIDE THIS ISSUE:**

Highlights  
page 1

Louisiana Monthly  
Crude Oil &  
Condensate Production  
page 1

Current Oil & Gas Data  
page 2

Louisiana Oil and  
Natural Gas Production  
from Incapable Wells  
page 3

Quick Facts  
page 4



Department of Natural  
Resources  
*Thomas Harris, Secretary*

Technology Assessment  
Division  
*Jason Lanclos, Director*  
*Edward O'Brien, Economist*

617 North Third Street Baton  
Rouge, LA 70802

Tel. (225) 342-1270 Fax.  
(225) 242-1397 Email:

techasmt@la.gov  
www.dnr.louisiana.gov/tad

## Highlights

Louisiana natural gas  
June average spot  
wellhead price was  
\$3.23/MMBTU, \$0.34  
more than last month  
and \$1.65 more than  
the June 2020,  
average. The US  
Energy Information  
Administration (EIA),  
in its July Short-Term

Energy Outlook,  
expects Henry Hub  
spot prices to trend  
upwards. The EIA sees  
a \$3.22/MMBTU price  
for full-year 2021, and  
a decrease in prices to  
\$3.00/MMBTU in 2022.  
The EIA reported an  
injection of 16 BCF as  
of July 2, bringing the

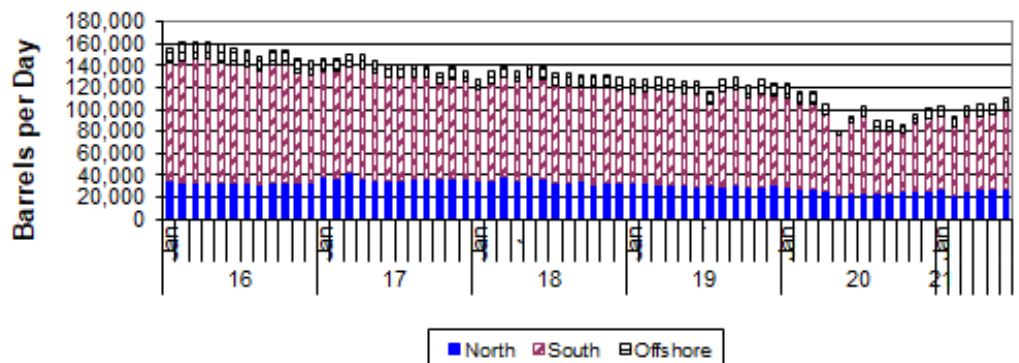
volume of working  
gas in storage to  
2,574 BCF. The  
storage volume was  
551 BCF lower than  
last year, and it was  
190 BCF lower than  
five-year average.

## Louisiana Monthly Crude Oil & Condensate Production\*\* Excluding Federal OCS (Barrels/Day)

Month							% Change	
	2016	2017	2018	2019	2020	2021	19/20	20/21
January	156,561	147,112	128,207	126,835	123,149	103,603		-15.87%
February	161,005	146,554	134,655	127,717	116,678	93,244		-20.08%
March	160,912	150,909	139,723	128,781	116,195	102,650		-11.66%
April	161,545	149,463	135,486	126,915	104,131	104,227		0.09%
May	158,990	144,160	140,331	126,113	80,340	104,980 <sup>1</sup>		30.67%
June	155,826	140,710	139,059	126,174	93,768	109,880 <sup>1</sup>		17.18%
July	154,328	140,982	133,622	115,703	103,650		-10.42%	
August	148,939	141,247	132,764	127,284	89,141		-29.97%	
September	154,565	139,503	132,086	128,717	88,956		-30.89%	
October	153,819	132,572	131,884	120,925	86,615		-28.37%	
November	146,454	138,872	130,848	126,923	95,059		-25.11%	
December	144,247	135,732	129,012	124,537	100,843		-19.03%	
<b>Year Average</b>	<b>154,766</b>	<b>142,318</b>	<b>133,973</b>	<b>125,552<sup>2</sup></b>	<b>99,877</b>	<b>103,097<sup>*</sup></b>		

<sup>\*</sup> Partial Year

<sup>\*\*</sup>All data are revised; see July 2001 statistic changes explanation



## Current Oil &amp; Gas Data

Louisiana DNR Technology Assessment Division

	JAN 21	DEC 20	NOV 20	JAN 20
<b>PRODUCTION</b>				
GOM CENTRAL FEDERAL OFFSHORE <sup>F</sup> (OCS)				
Crude Oil & Condensate (MMB)	52	51	48	58
Natural Gas & Casinghead (BCF)	68	62	57	81
<b>THE UNITED STATES TOTAL</b>				
Crude Oil & Condensate <sup>C</sup> (MMB)	343	344	335	395
Natural Gas & Casinghead <sup>C</sup> (BCF)	3,099	3,096	2,991	3,173
<b>IMPORTS</b>				
U.S. Crude Oil <sup>C</sup> (MMB)	179	177	167	199
U.S. Natural Gas <sup>C</sup> (BCF)	284	267	212	262
<b>BAKER HUGHES RIG COUNTS</b>				
U.S. Gas <sup>A</sup>	86	80	74	118
U.S. Oil <sup>A</sup>	284	259	236	674
U.S. Offshore <sup>A</sup>	16	15	12	20
U.S. Total <sup>A</sup>	370	339	322	792
<b>PRICES</b>				
<b>CRUDE OIL (\$/barrel)</b>				
OPEC Average <sup>C</sup> (F.O.B.)	55.26	52.06	N/A	53.02
U.S. Imports Average <sup>C</sup> (F.O.B.)	46.77	41.72	36.22	46.98
U.S. Wellhead Average <sup>C</sup>	49.73	43.97	38.23	56.86
Gulf OCS Wellhead Average <sup>C</sup>	49.87	43.02	39.11	57.52
State Severance Wellhead Average <sup>E</sup>	38.96	45.35	31.03	63.57
<b>NATURAL GAS (\$/MCF)</b>				
U.S. City Gates Average <sup>C</sup>	3.45	3.55	3.80	3.27
U.S. Imports Average <sup>C</sup> (F.O.B.)	3.03	2.89	2.78	2.92
U.S. Spot Market Average <sup>D</sup>	2.62	2.50	2.29	2.08
State Royalty Wellhead Average	2.40	2.46	2.50	1.93
NYMEX Henry Hub End of the Month Settle Gas Price <sup>B</sup> (\$/MMBTU)	2.64	2.90	3.00	2.16

**Key**

1	Estimated	<b>MCF</b>	Thousand Cubic Feet
2	Revised	<b>MMB</b>	Million Barrels
<b>BCF</b>	Billion Cubic Feet	<b>N/A</b>	Not Available
<b>BTU</b>	British Thermal Unit	<b>OCS</b>	Outer Continental Shelf
<b>F.O.B</b>	Free on Board	<b>MMBTU</b>	Million British Thermal Units

**Data Sources**

<b>A</b>	Oil & Gas Journal	<b>D</b>	Natural Gas Week
<b>B</b>	Wall Street Journal	<b>E</b>	LA Dept of Revenue
<b>C</b>	U. S. Dept. of Energy	<b>F</b>	BOEM

**Note:** Unless otherwise specified, data is from the Louisiana Department of Natural Resources and excludes Federal OCS.

**Note from the Editors**

**Louisiana Energy Facts** is published monthly by the Louisiana Department of Natural Resources, Technology Assessment Division as a public service to individuals interested in Louisiana energy activities. Content includes recent oil, gas and other energy statistics and a brief analysis of current trends.

**Louisiana Energy Facts** articles provide insight and information on subjects of special interest to our readers, and may announce relevant, forthcoming publications.

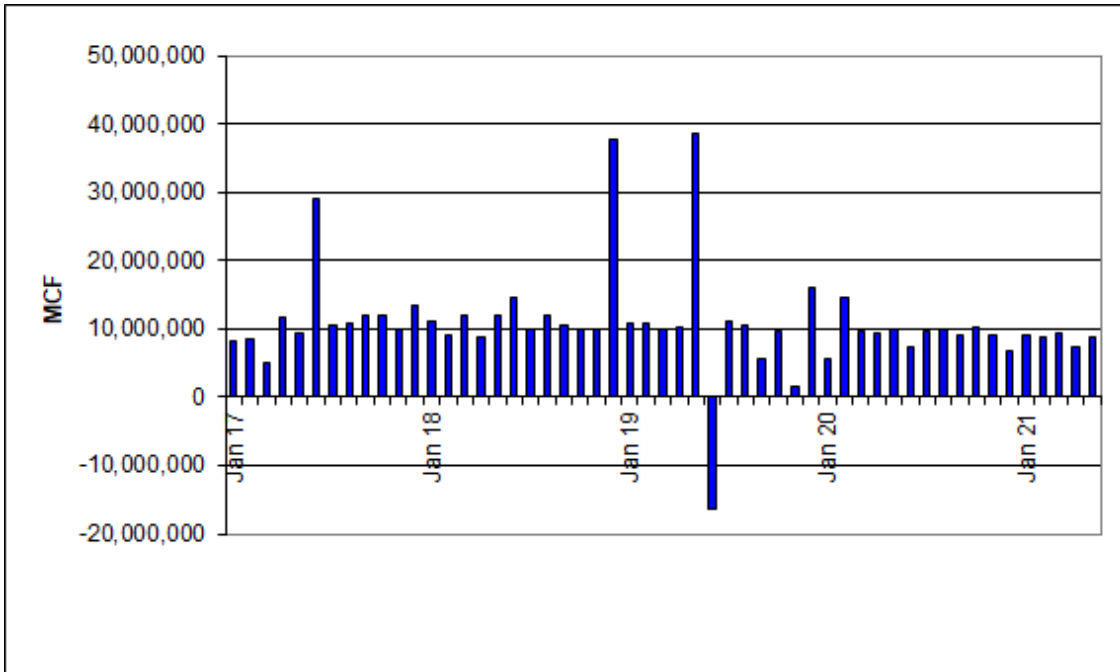
These documents are available on the Louisiana Department of Natural Resources, Technology Assessment Division home page: <http://www.dnr.louisiana.gov/tad>. From the menu, select Newsletters. Our current online holdings include issues dating from 1998 through the present.

If the issue you are seeking is unavailable, please contact us.

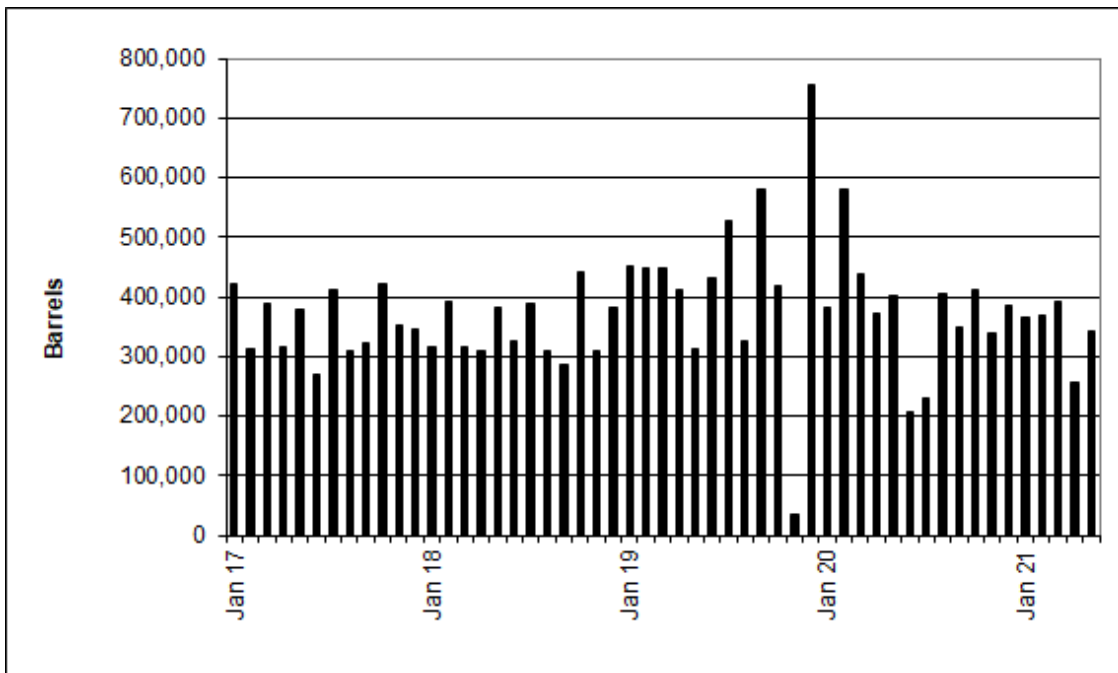
To request notification of when the **Louisiana Energy Facts** is available online, contact us at [techasm@la.gov](mailto:techasm@la.gov) with your name, title, company name, email address, and phone number. Please specify that you would like to be added to our email notification database for an electronic subscription.

# Louisiana Energy Facts

## Louisiana Natural Gas Production from Incapable Oil and Gas Wells



## Louisiana Crude Oil Production from Stripper Wells



## Quick Facts

## July 2021

Louisiana DNR Technology Assessment Division

**Department of Natural Resources**

*Thomas Harris, Secretary*

**Technology Assessment Division**

*Jason Lanclos, Director*

*Edward O'Brien, Economist*

617 North Third Street  
Baton Rouge, LA 70802

Tel. (225) 342-1270 Fax.  
(225) 242-1397 Email:

techasmt@la.gov  
www.dnr.louisiana.gov/tad

**SPOT MARKET PRICES**

Louisiana Natural Gas<sup>D</sup> (\$/MMBTU)

NYMEX Henry Hub Last Settle Gas Price<sup>B</sup> (\$/MMBTU)

Louisiana Sweet Crude - St. James<sup>B</sup> (\$/Barrel)

**BAKER HUGHES RIG COUNTS**

North Louisiana<sup>A</sup>

South Louisiana Inland Waters<sup>A</sup>

South Louisiana Inland<sup>A</sup>

Louisiana State Offshore

Louisiana Federal OCS Offshore

Total Louisiana<sup>A</sup> (OCS included)

**PRODUCTION (State Jurisdiction Only)**

Louisiana Crude Oil & Condensate (MMB)

Louisiana Natural Gas & Casinghead (BCF)

**DRILLING PERMITS (State Jurisdiction Only)**

Total Louisiana Oil and Gas

Louisiana Wildcats

Louisiana Offshore (Wildcats included)

	Jun 21	May 21	Jun 20
Louisiana Natural Gas <sup>D</sup> (\$/MMBTU)	3.25	2.80	1.58
NYMEX Henry Hub Last Settle Gas Price <sup>B</sup> (\$/MMBTU)	3.23	2.89	1.58
Louisiana Sweet Crude - St. James <sup>B</sup> (\$/Barrel)	72.91	67.25	39.48
	May 21	Apr 21	May 20
North Louisiana <sup>A</sup>	37	37	22
South Louisiana Inland Waters <sup>A</sup>	1	1	0
South Louisiana Inland <sup>A</sup>	1	1	1
Louisiana State Offshore	0	0	0
Louisiana Federal OCS Offshore	14	14	13
Total Louisiana <sup>A</sup> (OCS included)	53	53	36
	May 21	Apr 21	May 20
Louisiana Crude Oil & Condensate (MMB)	3.7 <sup>1</sup>	3.4 <sup>1</sup>	4.6 <sup>2</sup>
Louisiana Natural Gas & Casinghead (BCF)	278.9 <sup>1</sup>	269.7 <sup>1</sup>	268.4 <sup>2</sup>
	May 21	Apr 21	May 20
Total Louisiana Oil and Gas	68	35	22
Louisiana Wildcats	0	0	0
Louisiana Offshore (Wildcats included)	0	0	0

