

Louisiana Energy Facts

INSIDE THIS ISSUE:

Highlights
page 1

Louisiana Monthly
Natural gas &
Casinghead Production
page 1

Current Oil & Gas Data
page 2

Louisiana Royalty and
Severance Tax
Revenue by Source
page 3

Quick Facts
page 4



Department of Natural
Resources
Thomas Harris, Secretary

Technology Assessment
Division
Jason Lanclos, Director
Edward O'Brien, Economist

617 North Third Street Baton
Rouge, LA 70802

Tel. (225) 342-1270 Fax.
(225) 242-1397 Email:

techasmt@la.gov
www.dnr.louisiana.gov/tad

Highlights

West Texas Intermediate (WTI) crude oil spot price is over \$90 per barrel. On July 29, 2022, WTI settled at \$101.31 per barrel. The recent EIA forecasts expects WTI prices to average above the \$95 per barrel for the rest of 2022. Brent crude prices are expected to

have a premium as compared to WTI prices, averaging \$101 for the rest of 2022. The EIA has a neutral outlook for the end of 2022, with the second half of the year flat on price, but production to slowly increase throughout 2022 and 2023.

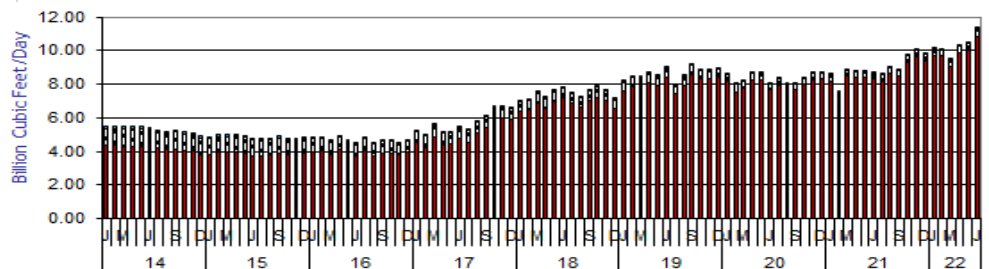
August 2022

Uncertainty dealing with supply, and ultimately price, is reflective of the situation in Eastern Europe, and the increased chances of a global economic slowdown, and could put downward pressure on prices in early 2023.

Louisiana Natural Gas & Casinghead Production Excluding Federal OCS (Billion Cubic Feet/Day)

Month	2017	2018	2019	2020	2021	2022	% Change	
							20/21	21/22
January	5.23	7.00	8.19	8.65	8.60	10.12		17.70%
February	4.98	7.11	8.48	8.03	7.52	10.08		34.02%
March	5.63	7.56	8.46	8.24	8.85	9.47		6.92%
April	5.13	7.23	8.70	8.72	8.80	10.26		16.65%
May	5.17	7.63	8.51	8.66	8.77	10.43		18.95%
June	5.50	7.81	8.98	8.06	8.71	11.31		29.77%
July	5.29	7.49	7.92	8.36	8.57		2.61%	
August	5.83	7.26	8.50	8.03	8.98		11.89%	
September	6.15	7.63	9.15	8.06	8.81		9.24%	
October	6.68	7.86	8.85	8.33	9.72		16.59%	
November	6.66	7.68	8.86	8.69	10.01		15.29%	
December	6.59	7.19	8.92	8.72	9.81		12.47%	
Year Average	4.72	5.74	7.45	7.61	8.93	10.28 **		

** Partial Year



■ North ■ South ■ Offshore

Current Oil & Gas Data

Louisiana DNR Technology Assessment Division

PRODUCTIONGOM CENTRAL FEDERAL OFFSHORE ^F (OCS)

Crude Oil & Condensate (MMB)

Natural Gas & Casinghead (BCF)

THE UNITED STATES TOTAL

Crude Oil & Condensate ^C (MMB)Natural Gas & Casinghead ^C (BCF)**IMPORTS**U.S. Crude Oil ^C (MMB)U.S. Natural Gas ^C (BCF)**BAKER HUGHES RIG COUNTS**U.S. Gas ^AU.S. Oil ^AU.S. Offshore ^AU.S. Total ^A**PRICES**

CRUDE OIL (\$/barrel)

OPEC Average ^C (F.O.B.)U.S. Imports Average ^C (F.O.B.)U.S. Wellhead Average ^CGulf OCS Wellhead Average ^CState Severance Wellhead Average ^E

NATURAL GAS (\$/MCF)

U.S. City Gates Average ^CU.S. Imports Average ^C (F.O.B.)U.S. Spot Market Average ^D

State Royalty Wellhead Average

NYMEX Henry Hub End of the Month Settle Gas Price ^B (\$/MMBTU)

	FEB 22	JAN 22	DEC 21	FEB 21
GOM CENTRAL FEDERAL OFFSHORE ^F (OCS)				
Crude Oil & Condensate (MMB)	44	49	50	48
Natural Gas & Casinghead (BCF)	54	60	64	63
THE UNITED STATES TOTAL				
Crude Oil & Condensate ^C (MMB)	317	352	359	274
Natural Gas & Casinghead ^C (BCF)	2,856	3,184	3,271	2,577
IMPORTS				
U.S. Crude Oil ^C (MMB)	172	198	199	156
U.S. Natural Gas ^C (BCF)	259	296	253	272
BAKER HUGHES RIG COUNTS				
U.S. Gas ^A	121	111	105	91
U.S. Oil ^A	515	490	475	306
U.S. Offshore ^A	16	18	14	17
U.S. Total ^A	636	601	580	397
PRICES				
CRUDE OIL (\$/barrel)				
OPEC Average ^C (F.O.B.)	96.80	88.59	75.09	60.66
U.S. Imports Average ^C (F.O.B.)	87.62	72.91	65.07	53.08
U.S. Wellhead Average ^C	91.37	80.33	70.55	56.72
Gulf OCS Wellhead Average ^C	86.55	77.79	71.64	56.39
State Severance Wellhead Average ^E	70.05	80.05	81.21	30.64
NATURAL GAS (\$/MCF)				
U.S. City Gates Average ^C	5.78	5.33	5.73	13.45
U.S. Imports Average ^C (F.O.B.)	5.62	6.87	4.93	5.82
U.S. Spot Market Average ^D	5.05	5.43	3.76	13.77
State Royalty Wellhead Average	4.81	4.03	4.25	3.93
NYMEX Henry Hub End of the Month Settle Gas Price ^B (\$/MMBTU)	6.27	4.02	5.45	2.76

Key

1	Estimated	MCF	Thousand Cubic Feet
2	Revised	MMB	Million Barrels
BCF	Billion Cubic Feet	N/A	Not Available
BTU	British Thermal Unit	OCS	Outer Continental Shelf
F.O.B	Free on Board	MMBTU	Million British Thermal Units

Data Sources

A	Oil & Gas Journal	D	Natural Gas Week
B	Wall Street Journal	E	LA Dept of Revenue
C	U. S. Dept. of Energy	F	BOEM

Note: Unless otherwise specified, data is from the Louisiana Department of Natural Resources and excludes Federal OCS.

Note from the Editors

Louisiana Energy Facts is published monthly by the Louisiana Department of Natural Resources, Technology Assessment Division as a public service to individuals interested in Louisiana energy activities. Content includes recent oil, gas and other energy statistics and a brief analysis of current trends.

Louisiana Energy Facts articles provide insight and information on subjects of special interest to our readers, and may announce relevant, forthcoming publications.

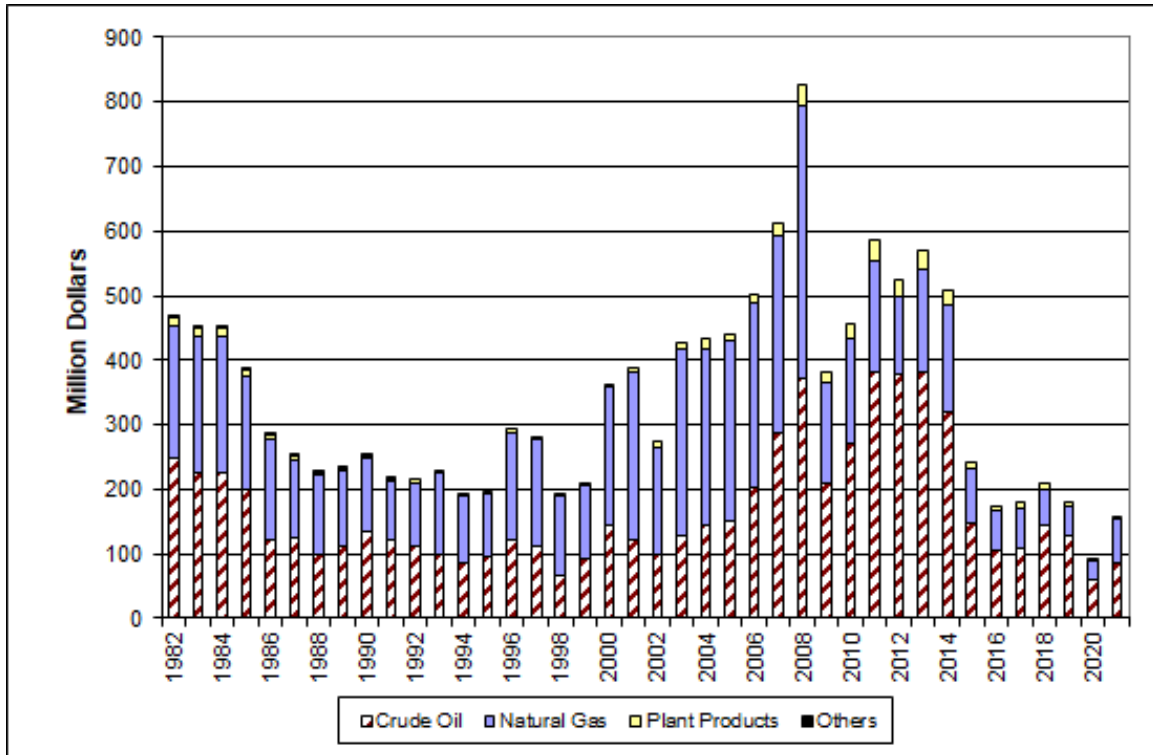
These documents are available on the Louisiana Department of Natural Resources, Technology Assessment Division home page: <http://www.dnr.louisiana.gov/tad>. From the menu, select Newsletters. Our current online holdings include issues dating from 1998 through the present.

If the issue you are seeking is unavailable, please contact us.

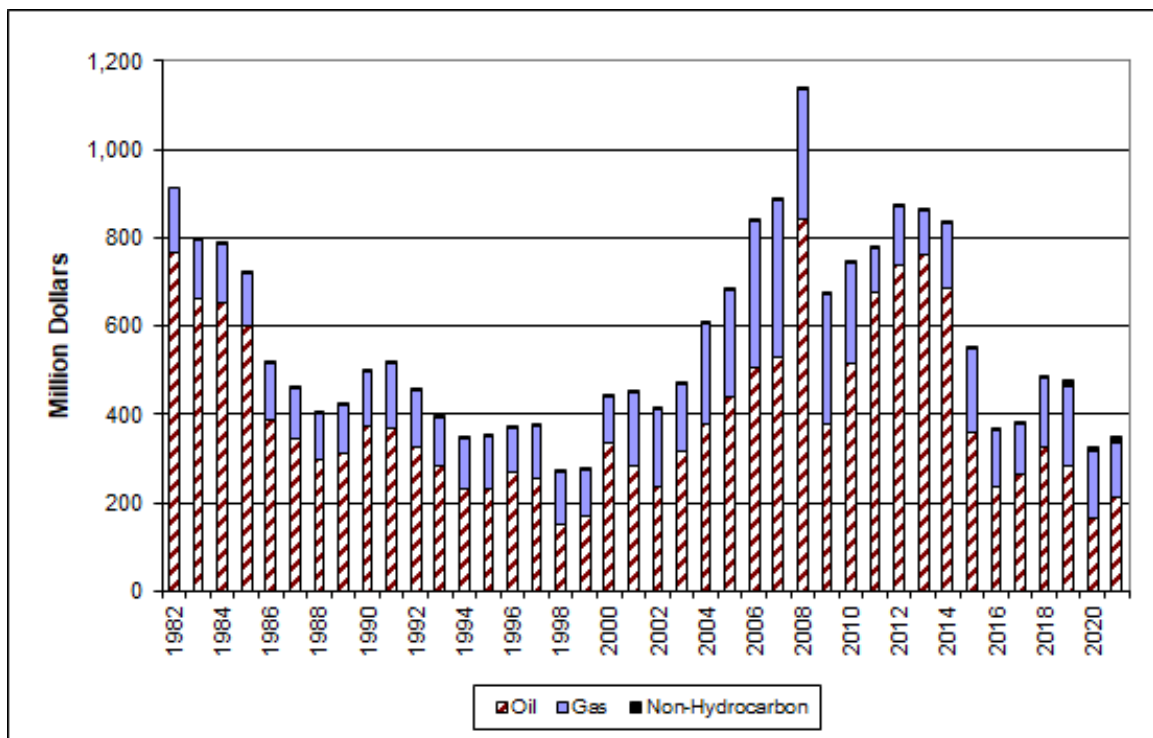
To request notification of when the **Louisiana Energy Facts** is available online, contact us at techasmt@la.gov with your name, title, company name, email address, and phone number. Please specify that you would like to be added to our email notification database for an electronic subscription.

Louisiana Energy Facts

Louisiana Mineral Royalty Revenue by Source



Louisiana Mineral Severance Tax Revenue by Source



Quick Facts

August 2022

Louisiana DNR Technology Assessment Division

Department of Natural Resources

Thomas Harris, Secretary

Technology Assessment Division

Jason Lanclos, Director
Edward O'Brien, Economist

617 North Third Street
Baton Rouge, LA 70802

Tel. (225) 342-1270 Fax.
(225) 242-1397 Email:

techasmt@la.gov
www.dnr.louisiana.gov/tad

SPOT MARKET PRICES

Louisiana Natural Gas^D (\$/MMBTU)
NYMEX Henry Hub Last Settle Gas Price^B (\$/MMBTU)
Louisiana Sweet Crude - St. James^B (\$/Barrel)

BAKER HUGHES RIG COUNTS

North Louisiana^A
South Louisiana Inland Waters^A
South Louisiana Inland^A
Louisiana State Offshore
Louisiana Federal OCS Offshore
Total Louisiana^A (OCS included)

PRODUCTION (State Jurisdiction Only)

Louisiana Crude Oil & Condensate (MMB)
Louisiana Natural Gas & Casinghead (BCF)

DRILLING PERMITS (State Jurisdiction Only)

Total Louisiana Oil and Gas
Louisiana Wildcats
Louisiana Offshore (Wildcats included)

Jul 22	Jun 22	Jul 21
8.20	7.54	3.71
7.26	7.67	3.81
102.02	115.91	73.05
Jun 22	May 22	Jun 21
46	46	37
3	2	1
3	3	1
0	0	0
15	16	13
67	68	52
Jun 22	May 22	Jun 21
3.3 ¹	3.4 ¹	2.8
339.2 ¹	323.5 ¹	261.4
Jun 22	May 22	Jun 21
78	86	42
0	0	0
0	0	0

