

# Louisiana Energy Facts

## INSIDE THIS ISSUE:

Highlights  
page 1

Louisiana Monthly  
Crude Oil &  
Condensate Production  
page 1

Current Oil & Gas Data  
page 2

Louisiana Oil and  
Natural Gas Production  
from Incapable Wells  
page 3

Quick Facts  
page 4



Department of Natural  
Resources  
Tyler Gray, Secretary

Technology Assessment  
Division

Jason Lanclos, Director  
Edward O'Brien, Economist

617 North Third Street Baton  
Rouge, LA 70802

Tel. (225) 342-1270 Fax.  
(225) 242-1397 Email:

techasmt@la.gov  
www.dnr.louisiana.gov/tad

## Highlights

## July 2024

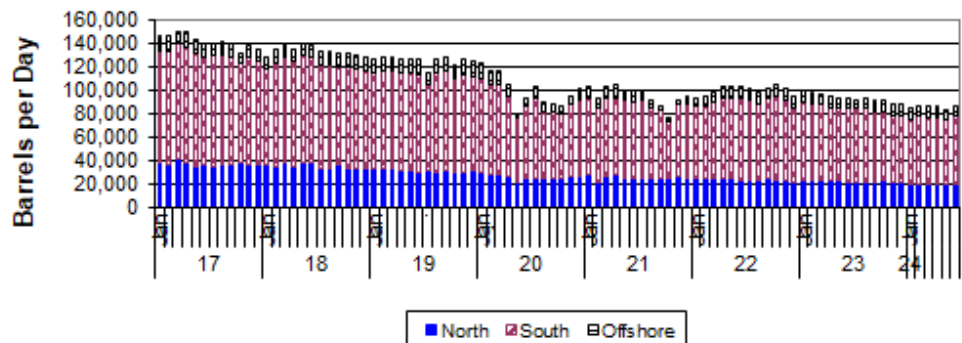
Louisiana natural gas June average spot wellhead price was \$2.66/MMBTU, \$0.45 more than last month and \$0.48 more than the June 2023, average. The US Energy Information Administration (EIA), in its July Short-Term Energy Outlook, expects Henry Hub spot prices to trend upwards for the rest of 2024. The EIA sees a \$2.90/MMBTU price for full-year 2024 and an increase in prices to \$3.30/MMBTU in 2025. The EIA reported an injection of 65 BCF the week ending June 28, bringing the volume of working gas in storage to 3,199 BCF. The storage volume was 322 BCF higher than last year, and it was 504 BCF higher than five-year average.

### Louisiana Monthly Crude Oil & Condensate Production\*\* Excluding Federal OCS (Barrels/Day)

Month	2019	2020	2021	2022	2023	2023	% Change	
							22/23	23/24
January	126,835	123,149	103,603	92,860	99,714	84,432		-15.33%
February	127,717	116,678	93,244	94,647	98,142	86,657		-11.70%
March	128,781	116,195	102,650	98,069	96,904	86,202		-11.04%
April	126,915	104,131	104,227	103,840	94,749	86,263 <sup>1</sup>		-8.96%
May	126,113	80,340	100,387	102,980	93,403	83,165 <sup>1</sup>		-10.96%
June	126,174	93,768	99,565	102,515	92,880	86,656 <sup>1</sup>		-6.70%
July	115,703	103,650	100,040	101,687	91,876		-9.65%	
August	127,284	89,141	91,639	98,744	93,844		-4.96%	
September	128,717	88,956	86,573	102,050	91,296		-10.54%	
October	120,925	86,615	76,990	105,433	91,556		-13.16%	
November	126,923	95,059	92,370	101,711	88,675		-12.82%	
December	124,537	100,843	94,619	94,183	88,094		-6.47%	
<b>Year Average</b>	<b>125,552</b>	<b>99,877</b>	<b>95,492</b>	<b>99,152</b>	<b>98,475</b>	<b>85,562<sup>*</sup></b>		

\* Partial Year

\*\*All data are revised; see July 2001 statistic changes explanation



## Current Oil &amp; Gas Data

Louisiana DNR Technology Assessment Division

**PRODUCTION**GOM CENTRAL FEDERAL OFFSHORE <sup>F</sup> (OCS)

Crude Oil &amp; Condensate (MMB)

Natural Gas &amp; Casinghead (BCF)

THE UNITED STATES TOTAL

Crude Oil & Condensate <sup>C</sup> (MMB)Natural Gas & Casinghead <sup>C</sup> (BCF)**IMPORTS**U.S. Crude Oil <sup>C</sup> (MMB)U.S. Natural Gas <sup>C</sup> (BCF)**BAKER HUGHES RIG COUNTS**U.S. Gas <sup>A</sup>U.S. Oil <sup>A</sup>U.S. Offshore <sup>A</sup>U.S. Total <sup>A</sup>**PRICES**

CRUDE OIL (\$/barrel)

OPEC Average <sup>C</sup> (F.O.B.)U.S. Imports Average <sup>C</sup> (F.O.B.)U.S. Wellhead Average <sup>C</sup>Gulf OCS Wellhead Average <sup>C</sup>State Severance Wellhead Average <sup>E</sup>

NATURAL GAS (\$/MCF)

U.S. City Gates Average <sup>C</sup>U.S. Imports Average <sup>C</sup> (F.O.B.)U.S. Spot Market Average <sup>D</sup>

State Royalty Wellhead Average

NYMEX Henry Hub End of the Month Settle Gas Price <sup>B</sup> (\$/MMBTU)

JAN 24

DEC 23

NOV 23

JAN 23

51

55

53

56

57

58

55

66

389

412

398

388

3,186

3,305

3,177

3,141

205

198

208

195

323

277

252

275

119

118

117

155

502

505

502

618

20

20

20

16

620

623

619

773

Withheld

78.36

83.60

81.18

62.58

59.56

69.33

62.68

72.26

71.00

77.45

75.71

73.87

74.48

80.91

73.73

Withheld

88.14

99.37

77.87

4.76

4.39

4.36

7.11

2.44

2.80

3.02

8.49

1.79

2.41

2.77

7.38

3.14

2.44

2.72

3.79

2.62

2.81

3.29

4.90

**Key**

1	Estimated	MCF	Thousand Cubic Feet
2	Revised	MMB	Million Barrels
BCF	Billion Cubic Feet	N/A	Not Available
BTU	British Thermal Unit	OCS	Outer Continental Shelf
F.O.B	Free on Board	MMBTU	Million British Thermal Units

**Data Sources**

A	Oil & Gas Journal	D	Natural Gas Week
B	Wall Street Journal	E	LA Dept of Revenue
C	U. S. Dept. of Energy	F	BOEM

**Note:** Unless otherwise specified, data is from the Louisiana Department of Natural Resources and excludes Federal OCS.

**Note from the Editors**

**Louisiana Energy Facts** is published monthly by the Louisiana Department of Natural Resources, Technology Assessment Division as a public service to individuals interested in Louisiana energy activities. Content includes recent oil, gas and other energy statistics and a brief analysis of current trends.

**Louisiana Energy Facts** articles provide insight and information on subjects of special interest to our readers, and may announce relevant, forthcoming publications.

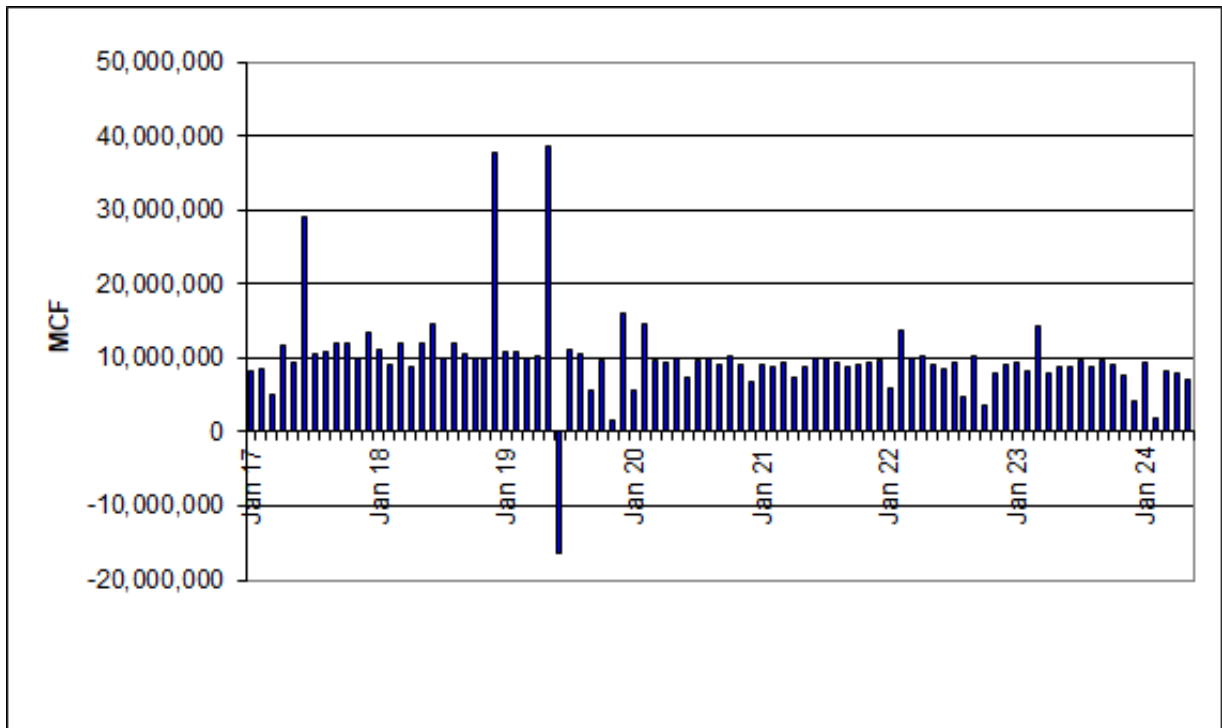
These documents are available on the Louisiana Department of Natural Resources, Technology Assessment Division home page: <http://www.dnr.louisiana.gov/tad>. From the menu, select Newsletters. Our current online holdings include issues dating from 1998 through the present.

If the issue you are seeking is unavailable, please contact us.

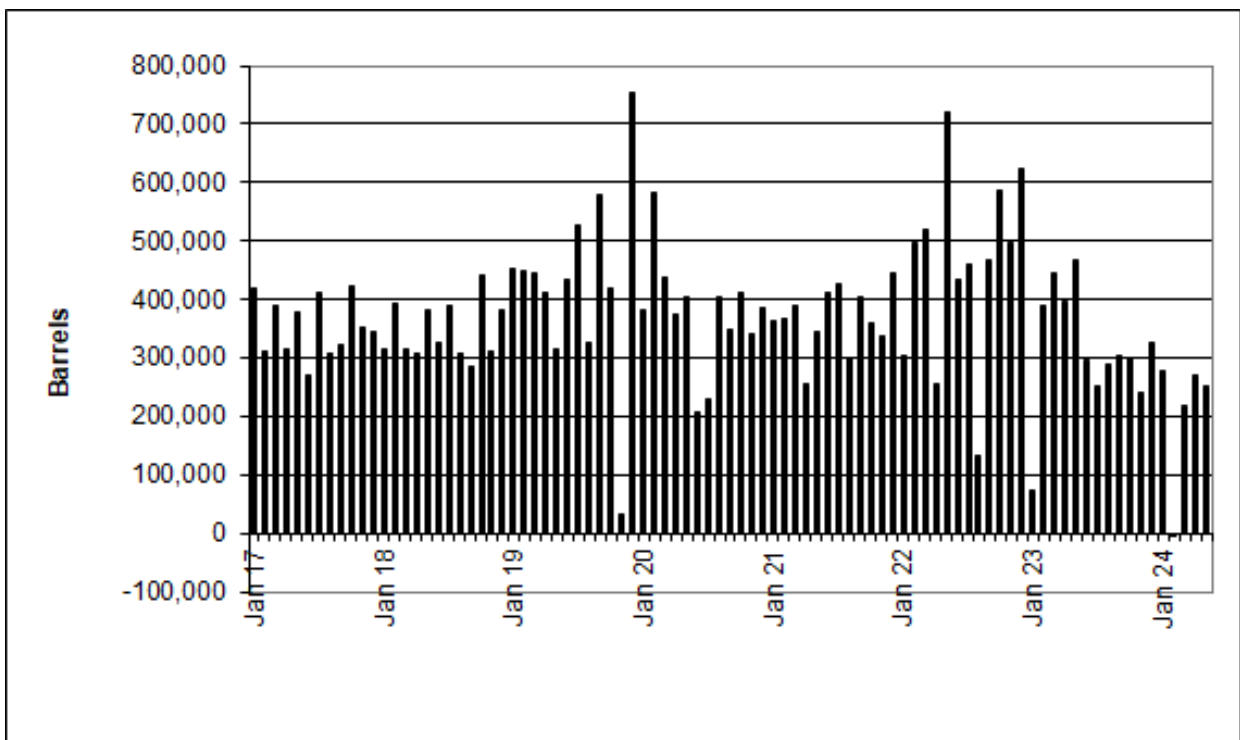
To request notification of when the **Louisiana Energy Facts** is available online, contact us at [techasmt@la.gov](mailto:techasmt@la.gov) with your name, title, company name, email address, and phone number. Please specify that you would like to be added to our email notification database for an electronic subscription.

## Louisiana Energy Facts

### Louisiana Natural Gas Production from Incapable Oil and Gas Wells



### Louisiana Crude Oil Production from Stripper Wells



## Quick Facts

July 2024

Louisiana DNR Technology Assessment Division

**Department of Natural Resources***Tyler Gray, Secretary***Technology Assessment Division***Jason Lanclos, Director**Edward O'Brien,  
Economist*617 North Third Street  
Baton Rouge, LA 70802Tel. (225) 342-1270 Fax.  
(225) 242-1397 Email:techasmt@la.gov  
www.dnr.louisiana.gov/tad**SPOT MARKET PRICES**Louisiana Natural Gas<sup>D</sup> (\$/MMBTU)NYMEX Henry Hub Last Settle Gas Price<sup>B</sup> (\$/MMBTU)Louisiana Sweet Crude - St. James<sup>B</sup> (\$/Barrel)**BAKER HUGHES RIG COUNTS**North Louisiana<sup>A</sup>South Louisiana Inland Waters<sup>A</sup>South Louisiana Inland<sup>A</sup>

Louisiana State Offshore

Louisiana Federal OCS Offshore

Total Louisiana<sup>A</sup> (OCS included)**PRODUCTION (State Jurisdiction Only)**

Louisiana Crude Oil &amp; Condensate (MMB)

Louisiana Natural Gas &amp; Casinghead (BCF)

**DRILLING PERMITS (State Jurisdiction Only)**

Total Louisiana Oil and Gas

Louisiana Wildcats

Louisiana Offshore (Wildcats included)

**Jun 24    May 24    Jun 23**

2.66    2.21    2.18

2.53    2.13    2.18

81.59    81.48    72.51

**May 24    Apr 24    May 23**

23    24    33

1    1    1

2    3    5

0    0    0

17    15    19

44    42    58

**May 24    Apr 24    May 23**2.8<sup>1</sup>    2.7<sup>1</sup>    2.9<sup>2</sup>284.7<sup>1</sup>    279.4<sup>1</sup>    379.2<sup>2</sup>**May 24    Apr 24    May 23**

51    56    52

1    0    0

0    0    0

