

Louisiana Energy Facts

Highlights

August 2025

INSIDE THIS ISSUE:

Highlights
page 1

Louisiana Monthly
Natural Gas &
Casinghead Production
page 1

Current Oil & Gas Data
page 2

Louisiana Royalty and
Severance Tax
Revenue by Source
page 3

Quick Facts
page 4



Department of Energy
and Natural Resources
Tyler Gray, Secretary

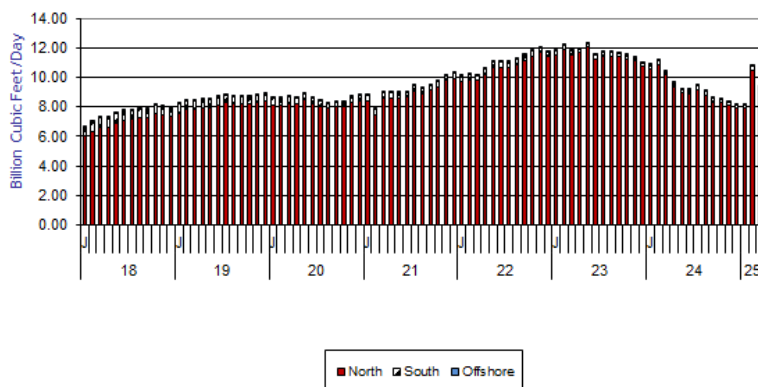
Office of Energy
Amanda McClinton,
Assistant Secretary
Edward O'Brien,
Senior Economist

West Texas Intermediate (WTI) crude oil spot price is under \$70 per barrel. On August 6, 2025, WTI settled at \$64.36 per barrel. The recent EIA forecasts expects WTI prices to average around the \$65 per barrel for the rest of 2025. Brent crude prices are expected to have a premium as compared to WTI prices, averaging \$69 for the rest of 2025. The EIA has a downward outlook for the end of 2025, with the second half of the year's price falling, but production to increase marginally throughout the rest of 2025 and 2026. Uncertainty dealing with supply from the Middle East and Eastern Europe, and ultimately prices, could put pressure on prices in early 2026, the trajectory depending upon what happens in both those theaters.

Louisiana Natural Gas & Casinghead Production Excluding Federal OCS (Billion Cubic Feet/Day)

Month							% Change	
	2020	2021	2022	2023	2024	2025	23/24	24/25
January	8.65	8.60	10.12	11.84	10.83	8.14		-24.79%
February	8.03	7.52	10.22	12.23	11.12	10.77		-3.16%
March	8.24	8.85	10.16	11.83	10.41	9.33		-10.38%
April	8.72	8.80	10.63	11.92	9.65		-18.99%	
May	8.66	8.77	11.04	12.31	9.19		-25.29%	
June	8.06	8.71	11.05	11.54	9.13		-20.88%	
July	8.36	8.57	11.03	11.69	9.44		-19.21%	
August	8.03	8.98	11.26	11.73	9.04		-22.93%	
September	8.06	8.81	11.49	11.66	8.58		-26.40%	
October	8.33	9.72	11.81	11.53	8.54		-25.90%	
November	8.69	10.01	12.03	11.37	8.35		-26.60%	
December	8.72	9.81	11.73	11.00	8.16		-25.79%	
Year Average	8.38	8.93	11.05	11.72	9.37	9.41 **		

** Partial Year



617 North Third Street Baton
Rouge, LA 70802

Tel. (225) 342-1270 Fax.
(225) 242-1397 Email:

techasmt@la.gov
www.dnr.louisiana.gov/tad

Current Oil & Gas Data

Louisiana DNR Technology Assessment Division

PRODUCTIONGOM CENTRAL FEDERAL OFFSHORE ^F (OCS)

Crude Oil & Condensate (MMB)

Natural Gas & Casinghead (BCF)

THE UNITED STATES TOTAL

Crude Oil & Condensate ^C (MMB)Natural Gas & Casinghead ^C (BCF)**IMPORTS**U.S. Crude Oil ^C (MMB)U.S. Natural Gas ^C (BCF)**BAKER HUGHES RIG COUNTS**U.S. Gas ^AU.S. Oil ^AU.S. Offshore ^AU.S. Total ^A**PRICES**

CRUDE OIL (\$/barrel)

OPEC Average ^C (F.O.B.)U.S. Imports Average ^C (F.O.B.)U.S. Wellhead Average ^CGulf OCS Wellhead Average ^CState Severance Wellhead Average ^E

NATURAL GAS (\$/MCF)

U.S. City Gates Average ^CU.S. Imports Average ^C (F.O.B.)U.S. Spot Market Average ^D

State Royalty Wellhead Average

NYMEX Henry Hub End of the Month Settle Gas Price ^B (\$/MMBTU)

FEB 25	JAN 25	DEC 24	FEB 24
47	53	56	50
48	53	57	53
371	407	417	380
2,939	3,236	3,273	3,073
169	206	203	190
295	335	309	259
101	100	102	120
489	483	487	501
14	14	14	20
590	582	589	622
74	Withheld	71.07	77.03
64	66.53	63.96	67.87
70	73.15	68.12	74.96
73	73.13	68.92	75.51
74	66.56	67.03	75.75
5	4.88	4.40	4.52
4	5.04	3.13	2.44
4	4.32	3.14	1.79
4	3.67	2.24	2.16
4	3.51	3.43	2.49

Key

1	Estimated	MCF	Thousand Cubic Feet
2	Revised	MMB	Million Barrels
BCF	Billion Cubic Feet	N/A	Not Available
BTU	British Thermal Unit	OCS	Outer Continental Shelf
F.O.B	Free on Board	MMBTU	Million British Thermal Units

Data Sources

A	Oil & Gas Journal	D	Natural Gas Week
B	Wall Street Journal	E	LA Dept of Revenue
C	U. S. Dept. of Energy	F	BOEM

Note: Unless otherwise specified, data is from the Louisiana Department of Natural Resources and excludes Federal OCS.

Note from the Editors

Louisiana Energy Facts is published monthly by the Louisiana Department of Natural Resources, Technology Assessment Division as a public service to individuals interested in Louisiana energy activities. Content includes recent oil, gas and other energy statistics and a brief analysis of current trends.

Louisiana Energy Facts articles provide insight and information on subjects of special interest to our readers, and may announce relevant, forthcoming publications.

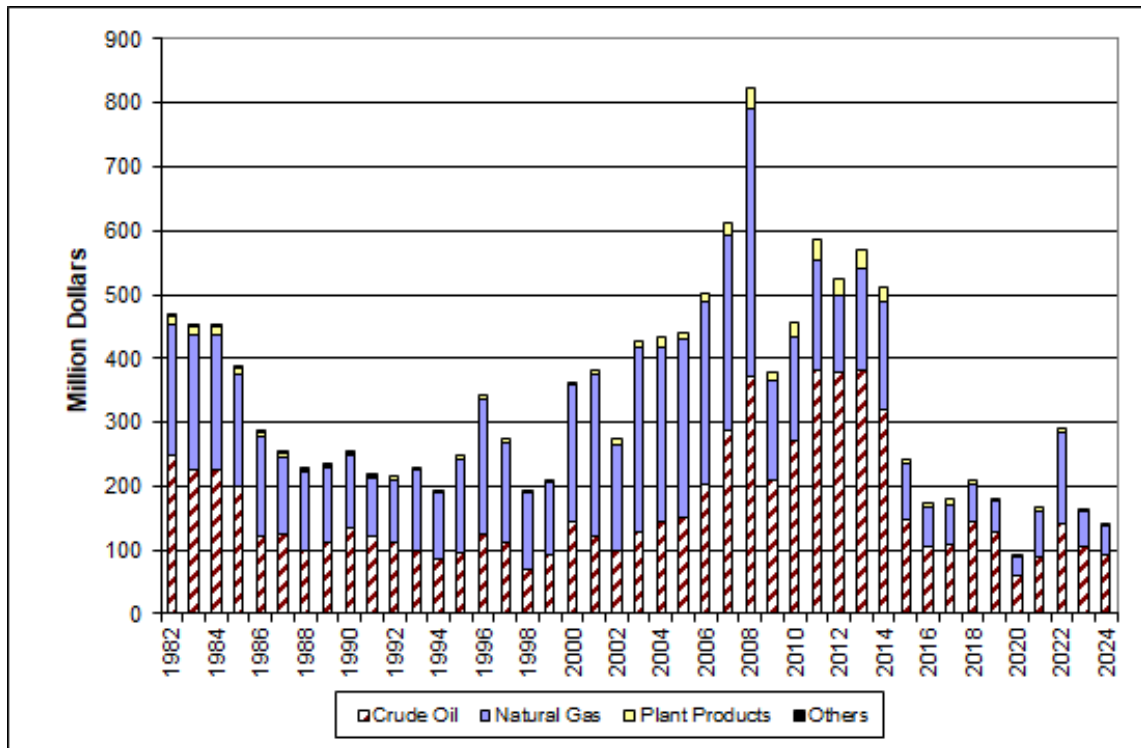
These documents are available on the Louisiana Department of Natural Resources, Technology Assessment Division home page: <http://www.dnr.louisiana.gov/tad>. From the menu, select Newsletters. Our current online holdings include issues dating from 1998 through the present.

If the issue you are seeking is unavailable, please contact us.

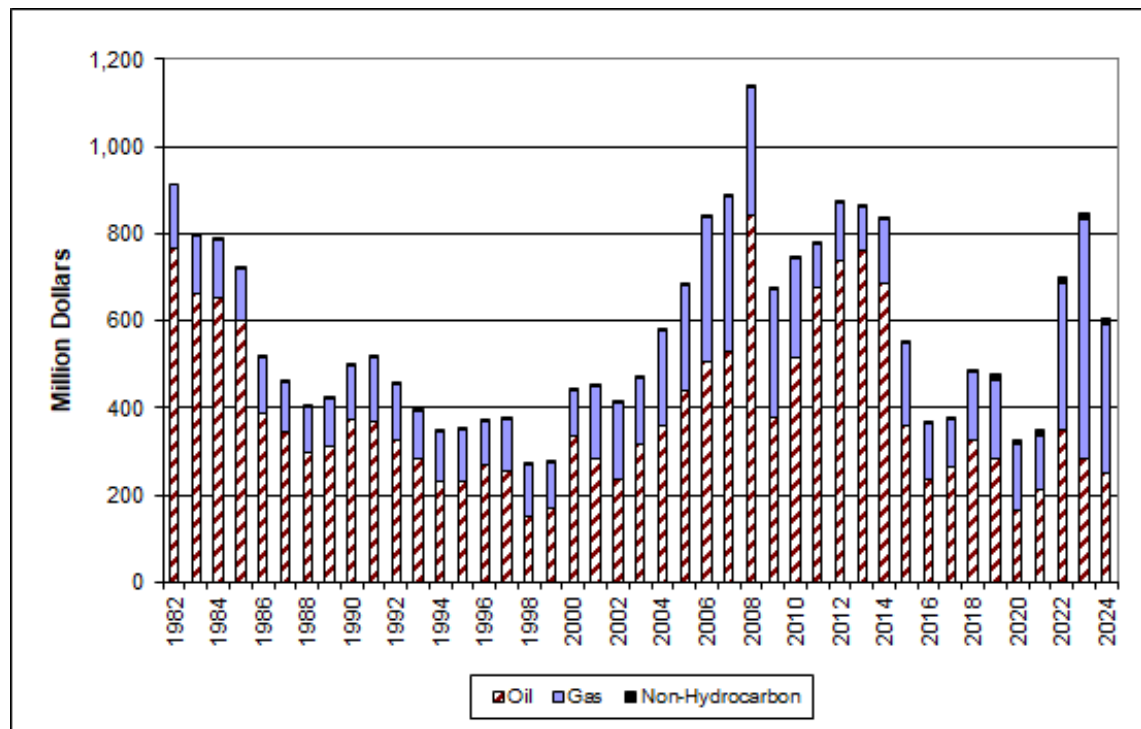
To request notification of when the **Louisiana Energy Facts** is available online, contact us at techasmt@la.gov with your name, title, company name, email address, and phone number. Please specify that you would like to be added to our email notification database for an electronic subscription.

Louisiana Energy Facts

Louisiana Mineral Royalty Revenue by Source



Louisiana Mineral Severance Tax Revenue by Source



Quick Facts

August 2025

**Department of Energy
and Natural Resources**
Tyler Gray, Secretary

Office of Energy
*Amanda McClinton,
Assistant Secretary*
*Edward O'Brien,
Senior Economist*

617 North Third Street
Baton Rouge, LA 70802

Tel. (225) 342-1270 Fax.
(225) 242-1397 Email:

techasmt@la.gov
www.dnr.louisiana.gov/tad

SPOT MARKET PRICES

Louisiana Natural Gas^D (\$/MMBTU)

NYMEX Henry Hub Last Settle Gas Price^B (\$/MMBTU)

Louisiana Sweet Crude - St. James^B (\$/Barrel)

BAKER HUGHES RIG COUNTS

North Louisiana^A

South Louisiana Inland Waters^A

South Louisiana Inland^A

Louisiana State Offshore

Louisiana Federal OCS Offshore

Total Louisiana^A (OCS included)

PRODUCTION (State Jurisdiction Only)

Louisiana Crude Oil & Condensate (MMB)

Louisiana Natural Gas & Casinghead (BCF)

DRILLING PERMITS (State Jurisdiction Only)

Total Louisiana Oil and Gas

Louisiana Wildcats

Louisiana Offshore (Wildcats included)

Louisiana	DNR	Technology	Assessment	Division
Jul 25	Jun 25	Jul 24		
3.29	3.14	2.13		
3.20	3.02	2.07		
69.63	69.95	83.02		
Jun 25	May 25	Jun 24		
21	20	24		
4	2	2		
1	2	2		
0	0	0		
9	9	18		
35	33	46		
Jun 25	May 25	Jun 24		
2.3 ¹	2.4 ¹	2.6 ²		
283.2 ¹	275.8 ¹	273.9 ²		
Jun 25	May 25	Jun 24		
55	57	25		
0	0	0		
0	0	0		

