

Louisiana Energy Facts

INSIDE THIS ISSUE:

Highlights
page 1

Louisiana Monthly
Crude Oil &
Condensate Production
page 1

Current Oil & Gas Data
page 2

Louisiana Oil and
Natural Gas Production
from Incapable Wells
page 3

Quick Facts
page 4



Department of Natural
Resources
Tyler Gray, Secretary

Office of Energy
Amanda McClinton,
Assistant Secretary
Edward O'Brien, Economist

617 North Third Street Baton
Rouge, LA 70802

Tel. (225) 342-1270 Fax.
(225) 242-1397 Email:

techasmt@la.gov
www.dnr.louisiana.gov/tad

Highlights

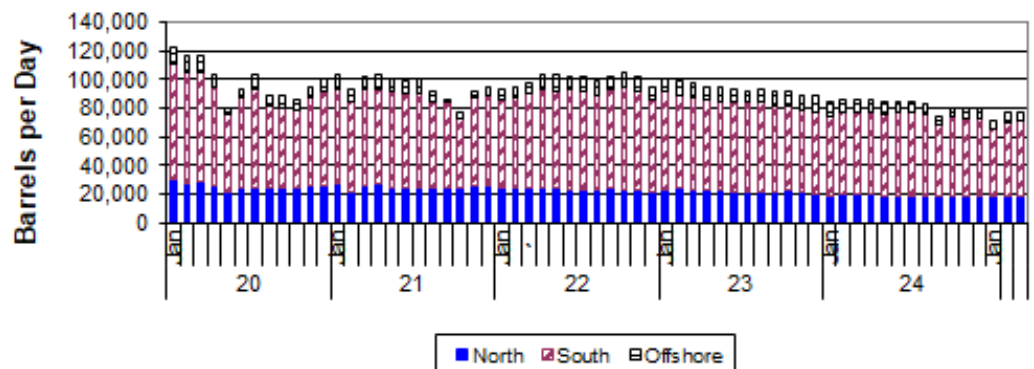
July 2025

Louisiana natural gas June average spot wellhead price was \$3.14/MMBTU, \$0.08 more than last month and \$0.48 more than the June 2024, average. The US Energy Information Administration (EIA), in its July Short-Term Energy Outlook, expects Henry Hub spot prices to trend upwards for the rest of 2025. The EIA sees a \$3.70/ MMBTU price for full-year 2025 and a increase in prices to \$4.40/MMBTU in 2026. The EIA reported an injection of 53 BCF the week ending July 4, bringing the volume of working gas in storage to 3,006 BCF. The storage volume was 184 BCF lower than last year, and it was 173 BCF higher than five-year average.

Louisiana Monthly Crude Oil & Condensate Production** Excluding Federal OCS (Barrels/Day)

Month	2020	2021	2022	2023	2024	2025	% Change	
January	123,149	103,603	92,824	100,593	84,408	70,614	-16.34%	
February	116,678	93,244	94,646	99,022	86,683	77,011	-11.16%	
March	116,195	102,650	98,190	97,051	86,204	77,113	-10.55%	
April	104,131	104,227	104,124	94,887	86,573	75,926 ¹	-12.30%	
May	80,340	100,387	103,029	94,148	83,969	77,243 ¹	-8.01%	
June	93,768	99,565	102,496	93,543	84,988	76,194 ¹	-10.35%	
July	103,650	100,040	101,821	91,718	84,665		-7.69%	
August	89,141	91,639	98,818	93,830	83,493		-11.02%	
September	88,956	86,573	102,319	91,744	74,677		-18.60%	
October	86,615	76,990	105,195	91,531	80,447		-12.11%	
November	95,059	92,370	101,642	88,970	79,666		-10.46%	
December	100,843	94,619	94,199	88,187	79,686		-9.64%	
Year Average	99,877	95,492	99,152	98,475	98,475	75,684 ¹		

¹ Figures are Projections



Current Oil & Gas Data

Louisiana DNR Technology Assessment Division

PRODUCTIONGOM CENTRAL FEDERAL OFFSHORE ^F (OCS)

Crude Oil & Condensate (MMB)

Natural Gas & Casinghead (BCF)

THE UNITED STATES TOTAL

Crude Oil & Condensate ^C (MMB)Natural Gas & Casinghead ^C (BCF)**IMPORTS**U.S. Crude Oil ^C (MMB)U.S. Natural Gas ^C (BCF)**BAKER HUGHES RIG COUNTS**U.S. Gas ^AU.S. Oil ^AU.S. Offshore ^AU.S. Total ^A**PRICES**

CRUDE OIL (\$/barrel)

OPEC Average ^C (F.O.B.)U.S. Imports Average ^C (F.O.B.)U.S. Wellhead Average ^CGulf OCS Wellhead Average ^CState Severance Wellhead Average ^E

NATURAL GAS (\$/MCF)

U.S. City Gates Average ^CU.S. Imports Average ^C (F.O.B.)U.S. Spot Market Average ^D

State Royalty Wellhead Average

NYMEX Henry Hub End of the Month Settle Gas Price ^B (\$/MMBTU)

JAN 25 DEC 24 NOV 24 JAN 24

53 56 48 51

48 57 48 57

407 417 401 389

3,236 3,273 3,090 3,186

206 203 197 205

335 309 270 323

100 102 101 119

483 487 483 502

14 14 14 20

582 589 584 620

Withheld 71.07 71.65 Withheld

66.53 63.96 65.17 62.58

73.15 68.12 68.19 72.26

73.13 68.92 69.37 73.87

66.56 67.03 69.66 Withheld

4.88 4.40 3.99 4.76

5.04 3.13 1.92 2.44

7.89 4.12 2.56 1.79

3.67 2.24 1.48 3.14

3.51 3.43 2.35 2.62

Key

1	Estimated	MCF	Thousand Cubic Feet
2	Revised	MMB	Million Barrels
BCF	Billion Cubic Feet	N/A	Not Available
BTU	British Thermal Unit	OCS	Outer Continental Shelf
F.O.B	Free on Board	MMBTU	Million British Thermal Units

Data Sources

A	Oil & Gas Journal	D	Natural Gas Week
B	Wall Street Journal	E	LA Dept of Revenue
C	U. S. Dept. of Energy	F	BOEM

Note: Unless otherwise specified, data is from the Louisiana Department of Natural Resources and excludes Federal OCS.

Note from the Editors

Louisiana Energy Facts is published monthly by the Louisiana Department of Natural Resources, Technology Assessment Division as a public service to individuals interested in Louisiana energy activities. Content includes recent oil, gas and other energy statistics and a brief analysis of current trends.

Louisiana Energy Facts articles provide insight and information on subjects of special interest to our readers, and may announce relevant, forthcoming publications.

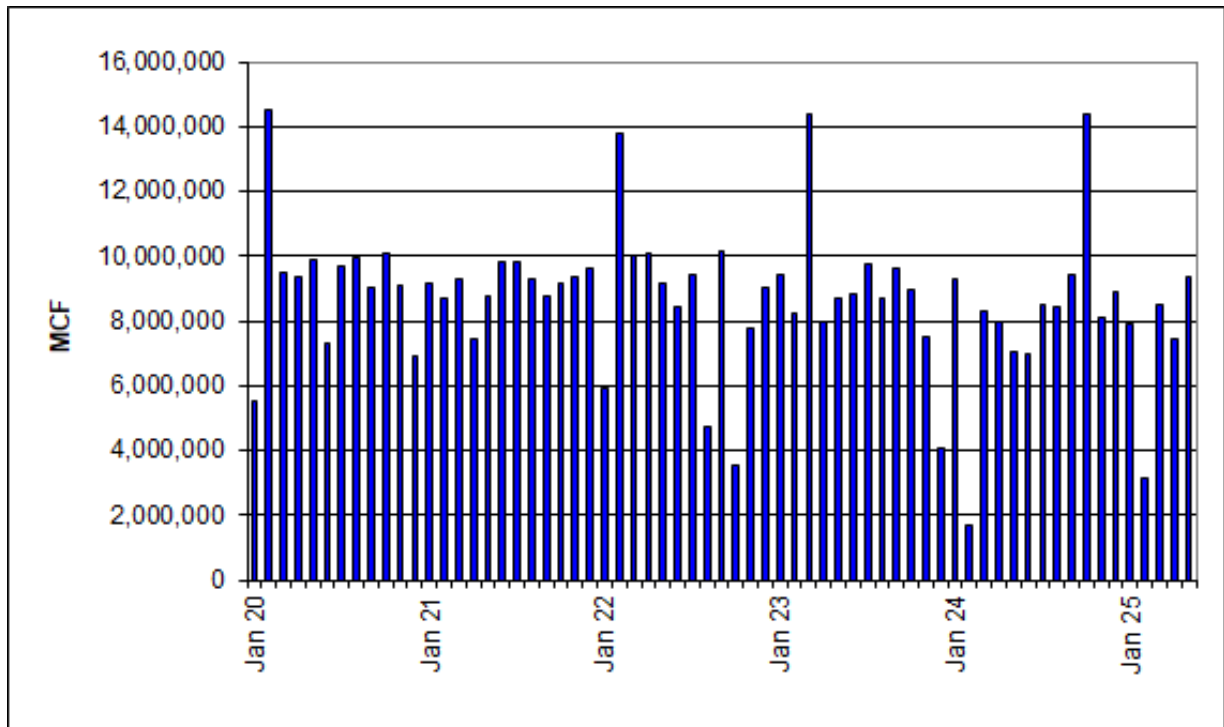
These documents are available on the Louisiana Department of Natural Resources, Technology Assessment Division home page: <http://www.dnr.louisiana.gov/tad>. From the menu, select Newsletters. Our current online holdings include issues dating from 1998 through the present.

If the issue you are seeking is unavailable, please contact us.

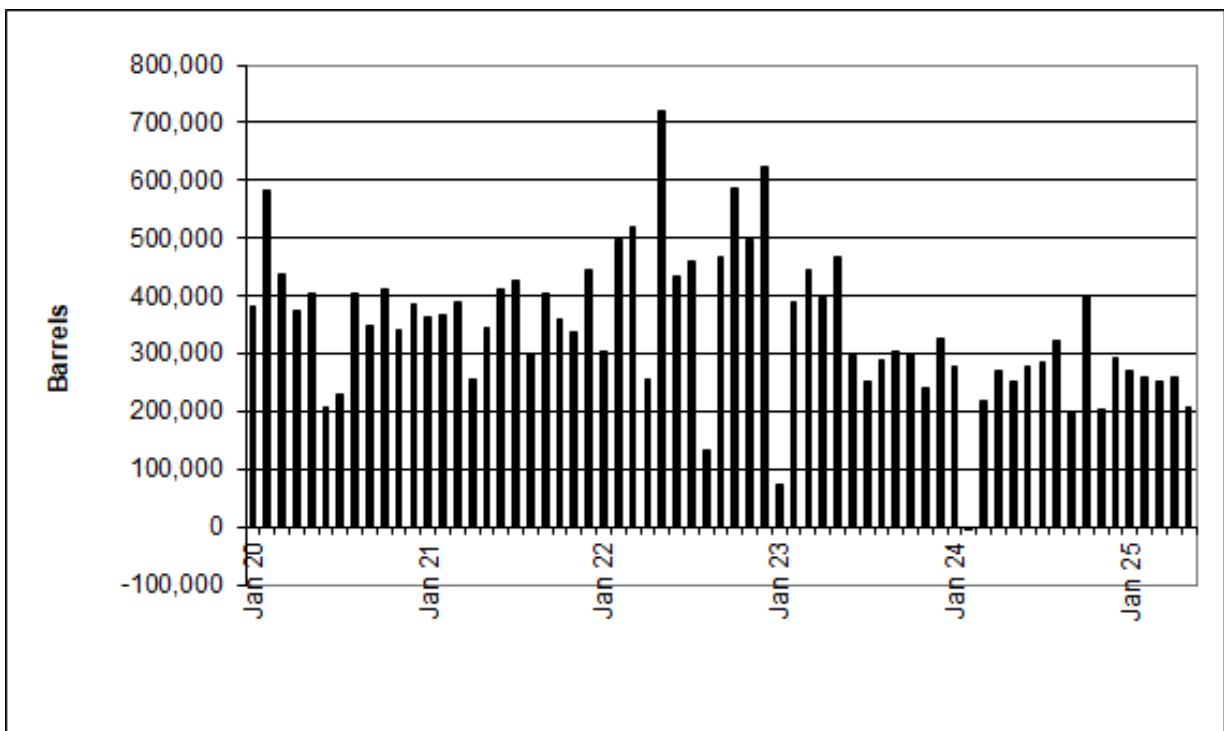
To request notification of when the **Louisiana Energy Facts** is available online, contact us at techasmt@la.gov with your name, title, company name, email address, and phone number. Please specify that you would like to be added to our email notification database for an electronic subscription.

Louisiana Energy Facts

Louisiana Natural Gas Production from Incapable Oil and Gas Wells



Louisiana Crude Oil Production from Stripper Wells



Quick Facts

July 2025

Louisiana Office of Energy

**Department of Energy
and Natural Resources**
Tyler Gray, Secretary

Office of Energy
*Amanda McClinton,
Assistant Secretary*
*Edward O'Brien,
Economist*

617 North Third Street
Baton Rouge, LA 70802

Tel. (225) 342-1270 Fax.
(225) 242-1397 Email:

techasmt@la.gov
www.dnr.louisiana.gov/tad

SPOT MARKET PRICESLouisiana Natural Gas^D (\$/MMBTU)NYMEX Henry Hub Last Settle Gas Price^B (\$/MMBTU)Louisiana Sweet Crude - St. James^B (\$/Barrel)**BAKER HUGHES RIG COUNTS**North Louisiana^ASouth Louisiana Inland Waters^ASouth Louisiana Inland^A

Louisiana State Offshore

Louisiana Federal OCS Offshore

Total Louisiana^A (OCS included)**PRODUCTION (State Jurisdiction Only)**

Louisiana Crude Oil & Condensate (MMB)

Louisiana Natural Gas & Casinghead (BCF)

DRILLING PERMITS (State Jurisdiction Only)

Total Louisiana Oil and Gas

Louisiana Wildcats

Louisiana Offshore (Wildcats included)

Jun 25 May 25 Jun 24

3.14 3.06 2.66

3.02 2.97 2.53

69.95 63.31 81.59

May 25 Apr 25 May 24

20 20 23

2 2 1

2 2 2

0 0 0

9 9 17

33 32 44

May 25 Apr 25 May 242.4¹ 2.2¹ 2.6²275.8¹ 271.2¹ 285.0²**May 25 Apr 25 May 24**

57 44 51

0 0 1

0 0 0

