

Louisiana Energy Facts

Highlights

June 2025

INSIDE THIS ISSUE:

Highlights
page 1

Louisiana Average
Active Rigs in Areas
Under State Jurisdiction
page 1

Current Oil & Gas Data
page 2

Louisiana Non-
Agricultural Employment
page 3

Natural Gas NYMEX June contract price closed at \$3.20 MMBTU. It was \$0.08 lower than May, or 2.5%, and \$0.71 higher than June 2024 contract price, an increase of 28.7%. The higher price is due the expected higher temperatures during the summer months, and lower than expected supplies

compared to the previous year. Working gas in storage was 2,598 BCF as of Friday, May 30, 2025, according to EIA estimates. This represents a net increase of 122 BCF from the previous week. Stocks were 295 BCF lower than last year at this time and 117 BCF higher than the five-year average of

five-year average of 2,481 BCF. At 2,598 BCF, total working gas is below the five-year historical range. The May 2025, Baker Hughes report showed gas-directed rigs in the US were up by 2, bringing the total to 100, from the previous month, and 0.9% lower than May 2024.

Louisiana Average Active Rigs in Areas Under State Jurisdiction (Monthly Average)

Quick Facts
page 4



Department of Energy
and Natural Resources
Tyler Gray, Secretary

Office of Energy
Amanda McClinton,
Assistant Secretary
Edward O'Brien, Economist

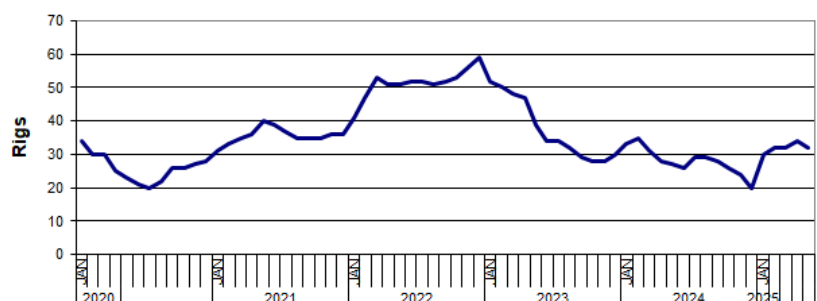
617 North Third Street Baton
Rouge, LA 70802

Tel. (225) 342-1270 Fax.
(225) 242-1397 Email:

techasmt@la.gov
www.dnr.louisiana.gov/tad

Month	2020	2021	2022	2023	2024	2025	% Change	
							23/24	24/25
January	34	31	41	52	33	30	-36.54%	-9.09%
February	30	33	47	50	35	32	-30.00%	-8.57%
March	30	35	53	48	31	32	-35.42%	3.23%
April	25	36	51	47	28	34	-40.43%	21.43%
May	23	40	51	39	27	32	-30.77%	18.52%
June	21	39	52	34	26		-23.53%	
July	20	37	52	34	29		-14.71%	
August	22	35	51	32	29		-9.38%	
September	26	35	52	29	28		-3.45%	
October	26	35	53	28	26		-7.14%	
November	27	36	56	28	24		-14.29%	
December	28	36	59	30	20		-33.33%	
Year Average	26	36	52	48	31	32 *	-23.25%	5.10%

* Partial Year



Current Oil & Gas Data

Louisiana DENR Office of Energy

PRODUCTIONGOM CENTRAL FEDERAL OFFSHORE ^F (OCS)

Crude Oil & Condensate (MMB)

Natural Gas & Casinghead (BCF)

THE UNITED STATES TOTAL

Crude Oil & Condensate ^C (MMB)Natural Gas & Casinghead ^C (BCF)**IMPORTS**U.S. Crude Oil ^C (MMB)U.S. Natural Gas ^C (BCF)**BAKER HUGHES RIG COUNTS**U.S. Gas ^AU.S. Oil ^AU.S. Offshore ^AU.S. Total ^A**PRICES**

CRUDE OIL (\$/barrel)

OPEC Average ^C (F.O.B.)U.S. Imports Average ^C (F.O.B.)U.S. Wellhead Average ^CGulf OCS Wellhead Average ^CState Severance Wellhead Average ^E

NATURAL GAS (\$/MCF)

U.S. City Gates Average ^CU.S. Imports Average ^C (F.O.B.)U.S. Spot Market Average ^D

State Royalty Wellhead Average

NYMEX Henry Hub End of the Month Settle Gas Price ^B (\$/MMBTU)

DEC 24 NOV 24 OCT 24 DEC 23

56 48 53 55

57 48 56 58

417 401 417 412

3,273 3,090 3,189 3,305

203 197 197 198

309 270 254 277

102 101 101 118

487 483 485 505

14 14 18 20

589 584 586 623

71.07 71.65 71.44 78.36

63.96 65.17 65.17 59.56

68.12 68.19 70.39 71.00

68.92 69.37 70.52 74.48

67.03 69.66 77.31 88.14

5.05 3.99 4.08 4.39

3.13 1.92 1.60 2.80

4.12 2.56 2.32 2.41

2.24 1.48 1.79 2.44

3.43 2.35 2.59 2.81

Key

1	Estimated	MCF	Thousand Cubic Feet
2	Revised	MMB	Million Barrels
BCF	Billion Cubic Feet	N/A	Not Available
BTU	British Thermal Unit	OCS	Outer Continental Shelf
F.O.B	Free on Board	MMBTU	Million British Thermal Units

Data Sources

A	Oil & Gas Journal	D	Natural Gas Week
B	Wall Street Journal	E	LA Dept of Revenue
C	U. S. Dept. of Energy	F	BOEM

Note: Unless otherwise specified, data is from the Louisiana Department of Natural Resources and excludes Federal OCS.

Note from the Editors

Louisiana Energy Facts is published monthly by the Louisiana Department of Energy and Natural Resources, Office of Energy as a public service to individuals interested in Louisiana energy activities. Content includes recent oil, gas and other energy statistics and a brief analysis of current trends.

Louisiana Energy Facts articles provide insight and information on subjects of special interest to our readers, and may announce relevant, forthcoming publications.

These documents are available on the Louisiana Department of Energy and Natural Resources, Office of Energy home page: <http://www.dnr.louisiana.gov/tad>. From the menu, select Newsletters. Our current online holdings include issues dating from 1998 through the present.

If the issue you are seeking is unavailable, please contact us.

To request notification of when the **Louisiana Energy Facts** is available online, contact us at techasmt@la.gov with your name, title, company name, email address, and phone number. Please specify that you would like to be added to our email notification database for an electronic subscription.

Louisiana Energy Facts

Louisiana Non-Agricultural Employment

<u>Year</u>	<u>Oil & Gas Production</u>	<u>Chemical Industry</u>	<u>Oil Refining</u>	<u>Pipelines</u>	<u>Total Employment</u>
1984	78,032	29,104	13,053	1,247 *	1,568,064
1985	77,781	28,093	12,458	1,144 *	1,550,443
1986	58,888	25,998	12,233	1,168 *	1,475,318
1987	52,117	25,345	12,225	1,051 *	1,438,793
1988	54,565	26,957	11,258	1,039 *	1,468,508
1989	52,556	28,146	11,325	1,016 *	1,494,181
1990	54,063	29,083	11,535	1,041 *	1,546,820
1991	54,412	29,412	12,268	1,073 *	1,567,139
1992	45,869	30,349	12,543	1,095 *	1,583,423
1993	44,422	30,419	12,728	1,078 *	1,613,577
1994	44,885	30,014	13,037	1,014 *	1,671,087
1995	44,279	30,168	11,603	932 *	1,721,651
1996	46,885	30,096	11,262	789 *	1,757,710
1997	51,559	29,935	11,038	792 *	1,797,225
1998	54,766	30,315	10,939	702 *	1,838,319
1999	44,684	28,877	11,070	693 *	1,847,841
2000	45,714	28,335	10,345	724 *	1,872,494
2001	47,009	27,337	10,643	2,417	1,868,902
2002	43,839	25,694	10,566	2,306	1,848,656
2003	42,339	24,558	10,395	2,334	1,851,570
2004	40,249	23,516	9,958	2,122	1,866,870
2005	41,179	23,269	10,240	2,179	1,843,237
2006	44,394	22,188	10,310	2,347	1,810,667
2007	46,764	22,612	10,764	2,454	1,869,965
2008	50,541	22,788	11,287	2,553	1,889,576
2009	46,956	22,478	11,363	2,456	1,849,395
2010	47,916	22,533	11,423	2,667	1,833,888
2011	49,239	23,141	11,163	2,771	1,844,578
2012	50,963	23,029	11,276	2,862	1,868,317
2013	50,242	23,345	11,575	2,857	1,891,851
2014	50,032	24,086	11,982	2,976	1,922,947
2015	43,492	25,025	12,048	3,122	1,929,817
2016	34,329	25,528	11,785	2,707	1,908,609
2017	31,828	25,510	11,824	2,575	1,904,609
2018	34,205	26,246	12,030	2,460	1,917,918
2019	34,921	29,847	11,372	2,622	1,921,493
2020	29,074	26,906	11,314	2,596	1,779,533
2021	27,512	26,450	10,544	2,362	1,809,289
2022	28,957	27,096	10,552	2,515	1,851,796
2023	28,394 ²	28,222 ²	10,718 ²	2,491 ²	1,893,810 ²
2024	26,778 ¹	28,695 ¹	10,828 ¹	2,522 ¹	1,909,614 ¹

^F Louisiana Workforce Commission

* Natural Gas Pipeline data was excluded

Quick Facts

June 2025

Louisiana DNR Technology Assessment Division

**Department of Energy
and Natural Resources**
Tyler Gray Secretary

Office of Energy
*Amanda McClinton,
Assistant Secretary
Edward O'Brien,
Economist*

617 North Third Street
Baton Rouge, LA 70802

Tel. (225) 342-1270 Fax.
(225) 242-1397 Email:

techasmt@la.gov
www.dnr.louisiana.gov/tad

SPOT MARKET PRICES

Louisiana Natural Gas^D (\$/MMBTU)

NYMEX Henry Hub Last Settle Gas Price^B (\$/MMBTU)

Louisiana Sweet Crude - St. James^B (\$/Barrel)

BAKER HUGHES RIG COUNTS

North Louisiana^A

South Louisiana Inland Waters^A

South Louisiana Inland^A

Louisiana State Offshore

Louisiana Federal OCS Offshore

Total Louisiana^A (OCS included)

PRODUCTION (State Jurisdiction Only)

Louisiana Crude Oil & Condensate (MMB)

Louisiana Natural Gas & Casinghead (BCF)

DRILLING PERMITS (State Jurisdiction Only)

Total Louisiana Oil and Gas

Louisiana Wildcats

Louisiana Offshore (Wildcats included)

	May 25	Apr 25	May 24
Louisiana Natural Gas ^D (\$/MMBTU)	3.06	3.28	2.21
NYMEX Henry Hub Last Settle Gas Price ^B (\$/MMBTU)	2.97	3.41	2.13
Louisiana Sweet Crude - St. James ^B (\$/Barrel)	63.31	63.30	81.48
	Apr 25	Mar 25	Apr 24
North Louisiana ^A	20	17	24
South Louisiana Inland Waters ^A	2	2	1
South Louisiana Inland ^A	2	2	3
Louisiana State Offshore	0	1	0
Louisiana Federal OCS Offshore	9	10	15
Total Louisiana ^A (OCS included)	32	32	42
	Apr 25	Mar 25	Apr 24
Louisiana Crude Oil & Condensate (MMB)	2.2 ¹	2.3 ¹	2.6
Louisiana Natural Gas & Casinghead (BCF)	271.2 ¹	275.9 ¹	259.8
	Apr 25	Mar 25	Apr 24
Total Louisiana Oil and Gas	44	41	56
Louisiana Wildcats	0	5	0
Louisiana Offshore (Wildcats included)	0	0	0

