

Louisiana Energy Facts

INSIDE THIS ISSUE:

Highlights
page 1

South Louisiana Sweet
Crude Oil Average
Spot Price at St James
page 1

Current Oil & Gas Data
page 2

Louisiana Estimated
Crude Oil and Lease
Condensate Proved
Reserves
page 3

Quick Facts
page 4



Department of Energy and
Natural Resources
Dustin Davidson, Secretary

Office of Energy
*Amanda McClinton,
Assistant Secretary*
Edward O'Brien, Economist

617 North Third Street Baton
Rouge, LA 70802

Tel. (225) 342-1270 Fax.
(225) 242-1397 Email:

techasmt@la.gov
www.dnr.louisiana.gov/tad

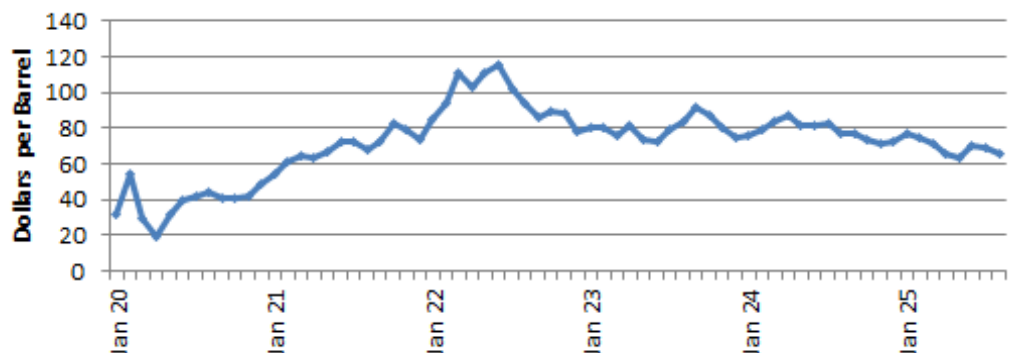
Highlights

September 2025

Louisiana's natural gas spot price averaged \$2.91 per MMBTU in August. The September 2025 NYMEX Natural Gas at Henry Hub settlement price was \$2.867 per MMBTU, 21.4 cents lower than the August 2025 gas settlement price and 48.5% higher than the September 2024 gas settlement price. The prices reflect greater natural gas demand in the United States, some of which is spurred by the increasing global demand for LNG, which is leading to increases in natural gas demand in the US. The U.S. Energy Information Administration (EIA) reported the working gas in storage was 3,272 billion cubic feet (BCF) as of September 4, 2025, which represents a decrease of 2.2% from last year's inventory for the same period and 5.6% higher than the five-year average inventory.

South Louisiana Sweet Crude Oil Average Spot Price at St James (Dollars per Barrel)

Month	2020	2021	2022	2023	2024	2025	% Change	
							23/24	24/25
January	31.38	54.20	85.29	80.76	76.48	77.37	-5.30%	1.16%
February	53.96	61.17	94.11	80.97	79.48	74.53	-1.84%	-6.23%
March	29.55	64.51	110.93	76.08	83.36	71.25	9.57%	-14.53%
April	19.27	63.73	103.50	81.31	87.61	65.30	7.75%	-25.47%
May	31.44	67.25	111.22	73.62	81.48	63.31	10.68%	-22.30%
June	39.48	72.91	115.91	72.55	81.59	69.95	12.46%	-14.27%
July	42.35	73.05	102.02	79.01	83.02	69.63	5.08%	-16.13%
August	44.00	68.51	94.17	84.04	77.33	65.96	-7.98%	-14.70%
September	41.01	72.95	86.26	91.60	77.57		-15.32%	
October	40.79	82.29	89.72	87.61	73.66		-15.92%	
November	42.43	79.42	88.41	80.13	71.54		-10.72%	
December	48.94	73.51	77.87	75.00	72.39		-3.48%	
Year Average	62.49	36.43	65.67	78.54	78.79	69.66 *		



Current Oil & Gas Data

Louisiana DNR Technology Assessment Division

PRODUCTIONGOM CENTRAL FEDERAL OFFSHORE ^F (OCS)

	MAR 25	FEB 25	JAN 25	MAR 24
Crude Oil & Condensate (MMB)	53	47	53	53
Natural Gas & Casinghead (BCF)	56	48	53	52

THE UNITED STATES TOTAL

Crude Oil & Condensate ^C (MMB)	417	371	407	408
Natural Gas & Casinghead ^C (BCF)	3,326	2,939	3,236	3,186

IMPORTS

U.S. Crude Oil ^C (MMB)	178	169	206	192
U.S. Natural Gas ^C (BCF)	263	295	335	244

BAKER HUGHES RIG COUNTS

U.S. Gas ^A	102	101	100	115
U.S. Oil ^A	491	489	483	510
U.S. Offshore ^A	14	14	14	20
U.S. Total ^A	593	590	582	625

PRICES

CRUDE OIL (\$/barrel)

OPEC Average ^C (F.O.B.)	74.49	74.78	Withheld	82.82
U.S. Imports Average ^C (F.O.B.)	60.71	64.08	66.53	70.19
U.S. Wellhead Average ^C	67.07	70.10	73.15	78.97
Gulf OCS Wellhead Average ^C	70.77	72.97	73.13	78.71
State Severance Wellhead Average ^E	73.53	75.64	66.56	80.26

NATURAL GAS (\$/MCF)

U.S. City Gates Average ^C	4.88	4.83	4.88	4.05
U.S. Imports Average ^C (F.O.B.)	2.51	4.36	5.04	1.72
U.S. Spot Market Average ^D	2.42	3.32	3.32	1.10
State Royalty Wellhead Average	3.70	3.50	3.67	1.56
NYMEX Henry Hub End of the Month Settle Gas Price ^B (\$/MMBTU)	3.91	3.54	3.51	1.62

Key

1	Estimated	MCF	Thousand Cubic Feet
2	Revised	MMB	Million Barrels
BCF	Billion Cubic Feet	N/A	Not Available
BTU	British Thermal Unit	OCS	Outer Continental Shelf
F.O.B	Free on Board	MMBTU	Million British Thermal Units

Data Sources

A	Oil & Gas Journal	D	Natural Gas Week
B	Wall Street Journal	E	LA Dept of Revenue
C	U. S. Dept. of Energy	F	BOEM

Note: Unless otherwise specified, data is from the Louisiana Department of Natural Resources and excludes Federal OCS.

Note from the Editors

Louisiana Energy Facts is published monthly by the Louisiana Department of Energy and Natural Resources, Office of Energy as a public service to individuals interested in Louisiana energy activities. Content includes recent oil, gas and other energy statistics and a brief analysis of current trends.

Louisiana Energy Facts articles provide insight and information on subjects of special interest to our readers, and may announce relevant, forthcoming publications.

These documents are available on the Louisiana Department of Energy and Natural Resources, Office of Energy home page: <http://www.dnr.louisiana.gov/tad>. From the menu, select Newsletters. If the issue you are seeking is unavailable, please contact us.

To request notification of when the **Louisiana Energy Facts** is available online, contact us at techasmt@la.gov with your name, title, company name, email address, and phone number. Please specify that you would like to be added to our email notification database for an electronic subscription.

Louisiana Energy Facts

LOUISIANA ESTIMATED CRUDE OIL AND LEASE CONDENSATE PROVED RESERVES As of December 31st of Each Year

YEAR	NORTH	SOUTH ONSHORE	SOUTH OFFSHORE	FEDERAL OCS	TOTAL LOUISIANA	TOTAL US
2007	169	533	89	3,860	4,651	25,562
2008	141	469	75	3,841	4,526	23,420
2009	133	491	76	3,972	4,672	25,581
2010	185	478	79	4,301	5,043	29,009
2011	202	456	83	5,013	5,566	33,762
2012	214	510	102	5,101	5,624	39,151
2013	237	532	91	5,075	5,627	42,818
2014	262	517	100	4,855	5,447	47,029
2015	227	453	74	4,448	4,945	41,054
2016	167	433	66	4,430	5,114	40,093
2017	220	419	73	4,929	5,641	47,650
2018	171	377	80	5,212	5,840	53,511
2019	138	362	69	5,537	6,106	52,939
2020	113	333	45	4,753	5,244	42,966
2021	136	249	47	4,180	4,612	47,140
2022	86	336	23	4,530	4,975	44,963
2023	64	359	28	4,288	4,739	43,449

Quick Facts

September 2025

Louisiana DENR Office of Energy

**Department of Energy
and Natural Resources**
Dustin Davidson, Secretary

Office of Energy
*Amanda McClinton,
Assistant Secretary
Edward O'Brien,
Economist*

617 North Third Street
Baton Rouge, LA 70802

Tel. (225) 342-1270 Fax.
(225) 242-1397 Email:

techasmt@la.gov
www.dnr.louisiana.gov/tad

SPOT MARKET PRICES

	Aug 25	Jul 25	Aug 24
Louisiana Natural Gas ^D (\$/MMBTU)	2.95	3.29	1.99
NYMEX Henry Hub Last Settle Gas Price ^B (\$/MMBTU)	2.91	3.20	1.98
Louisiana Sweet Crude - St. James ^B (\$/Barrel)	65.96	69.63	77.33

BAKER HUGHES RIG COUNTS

	Jul 25	Jun 25	Jul 24
North Louisiana ^A	21	21	24
South Louisiana Inland Waters ^A	4	4	2
South Louisiana Inland ^A	2	1	2
Louisiana State Offshore	0	0	0
Louisiana Federal OCS Offshore	9	9	18
Total Louisiana ^A (OCS included)	36	35	46

PRODUCTION (State Jurisdiction Only)

	Jul 25	Jun 25	Jul 24
Louisiana Crude Oil & Condensate (MMB)	2.4 ¹	2.3 ¹	2.9 ²
Louisiana Natural Gas & Casinghead (BCF)	294.6 ¹	283.2 ¹	280.4 ²

DRILLING PERMITS (State Jurisdiction Only)

	Jul 25	Jun 25	Jul 24
Total Louisiana Oil and Gas	45	55	44
Louisiana Wildcats	3	0	1
Louisiana Offshore (Wildcats included)	0	0	0

