

January 2001

# Louisiana Energy Facts

Department of Natural Resources

Technology Assessment Division

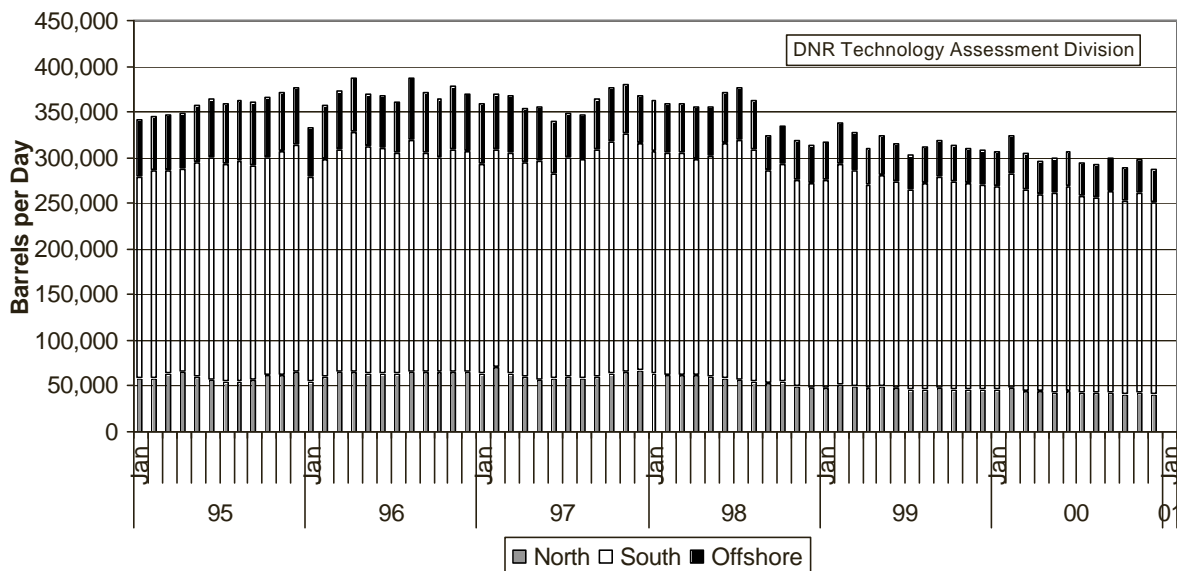
The average spot market price for Louisiana natural gas has increased from last year. The 2000 average natural gas spot market price was \$3.83 per MMBTU or \$1.52 higher than 1999 average, a 66% increase. The January 2001 Louisiana natural gas average price was \$9.84 per MMBTU, a 326% increase over January 2000. The unusually high price of natural gas is weather related. It is likely once temperatures increase, the price should begin to decline.

## Louisiana Crude Oil & Condensate Production Excluding Federal OCS (Barrels/Day)

Month	1995	1996	1997	1998	1999	2000	Percentage Change 99/00
January	342,014	333,005	359,154	361,609	317,366	306,294	-3.49%
February	345,606	357,756	368,949	359,226	337,582	323,359	-4.21%
March	346,145	372,179	367,693	358,924	326,780	303,856	-7.01%
April	349,244	387,616	353,025	355,142	310,325	296,528	-4.45%
May	357,214	368,963	355,772	356,226	323,382	300,250	-7.15%
June	364,825	367,154	340,111	371,958	314,857	306,157	-2.76%
July	358,723	361,427	347,667	376,665	303,580	294,213	-3.09%
August	362,362	387,432	347,261	362,708 <sup>2</sup>	311,434	292,200	-6.18%
September	360,144	371,614	364,069	324,198	318,793	300,166	-5.84%
October	366,773	363,369	375,691	334,519	312,994	288,255	-7.90%
November	371,901	379,060	380,825	318,600	310,462	298,086	-3.99%
December	377,119	369,913	367,340	314,232	308,684	286,507	-7.18%
<b>Year Average</b>	<b>358,506</b>	<b>368,291</b>	<b>360,630</b>	<b>348,300</b>	<b>316,353</b>	<b>299,656</b>	

\* Partial Year      <sup>1</sup> Estimated      <sup>2</sup> Revised

## Louisiana Crude Oil & Condensate Production Excluding Federal OCS



	NOV 00	OCT 00	NOV 99	SOURCE
<b>SPOT MARKET PRICES</b>				
Louisiana Natural Gas Average (\$/MMBTU)	4.47	5.21	2.97	E
Louisiana Sweet Crude - St. James (\$/barrel)	35.09	33.28	25.29	
<b>BAKER HUGHES RIG COUNTS</b>				
North Louisiana	28	32 <sup>2</sup>	25	A
South Louisiana Inland Waters	22	14 <sup>2</sup>	18	A
South Louisiana Inland	40	41 <sup>2</sup>	26	A
Louisiana Offshore (State + OCS)	127	125 <sup>2</sup>	93	A
Total Louisiana (OCS included)	217	212 <sup>2</sup>	161	A
The United States Total	1,067	1,055 <sup>2</sup>	782	A
<b>PRODUCTION</b>				
<u>LOUISIANA STATE JURISDICTION ONLY</u>				
Crude Oil & Condensate (MMB)	8.9	8.9	9.3 <sup>2</sup>	
Natural Gas & Casinghead (BCF)	111.4	112.1 <sup>2</sup>	116.6 <sup>2</sup>	

	JUL 00	JUN 00	JUL 99	SOURCE
<b>PRODUCTION</b>				
<u>LOUISIANA FEDERAL OFFSHORE (OCS)</u>				
Crude Oil & Condensate (MMB)	39	38	40	C
Natural Gas & Casinghead (BCF)	359	355	333 <sup>2</sup>	C
<u>THE UNITED STATES TOTAL</u>				
Crude Oil & Condensate (MMB)	180	175	182	C
Natural Gas & Casinghead (BCF)	1,585	1,559	1,573 <sup>2</sup>	C
<b>IMPORTS</b>				
<u>THE UNITED STATES TOTAL</u>				
Crude Oil (MMB)	288	283	286	C
Natural Gas (BCF)	294	296	289 <sup>2</sup>	C
<b>PERMITS</b>				
<u>LOUISIANA STATE JURISDICTION ONLY</u>				
Total Oil and Gas	118	154	85	
Wildcats	5	7	14	
State Offshore (Wildcats included)	11	6	8	
<b>PRICES</b>				
<u>CRUDE OIL (\$/barrel)</u>				
OPEC Average (F.O.B.)	25.20	26.80	16.93	C
U.S. Imports Average (F.O.B.)	26.15	27.44	17.30	C
U.S. Wellhead Average	26.80	27.88	16.13	C
Gulf OCS Wellhead Average	28.01	28.64	16.93	C
State Severance Wellhead Average	29.13	27.51	14.09	D
<u>NATURAL GAS (\$/MCF)</u>				
U.S. City Gates Average	5.13	5.21	3.23 <sup>2</sup>	C
U.S. Imports Average	3.67	3.87 <sup>2</sup>	2.27 <sup>2</sup>	C
U.S. Wellhead Average	3.70	3.73	2.18 <sup>2</sup>	C
State Royalty Wellhead Average	4.66	4.96	2.49 <sup>2</sup>	

<sup>1</sup> Estimated      <sup>2</sup> Revised      BCF: Billion Cubic Feet      BTU: British thermal unit  
F.O.B.: Free on board      MCF: Thousand Cubic Feet      MMB: Million Barrels      MMBTU: Million BTU  
OCS: Outer Continental Shelf      N/A: Not Available

**DATA SOURCES**

A: Oil and Gas Journal      C: U.S. Department of Energy  
D: Louisiana Department of Revenue and Taxation      E: DYNEGY Inc.

Unless otherwise specified, data is from the Louisiana Department of Natural Resources and excludes Federal OCS.

**Louisiana Energy Facts**

**LOUISIANA CRUDE OIL AND CONDENSATE PRODUCTION**

Excluding Federal OCS

	(Barrels)			
<u>YEAR</u>	<u>NORTH</u>	<u>SOUTH</u>	<u>OFFSHORE</u>	<u>TOTAL</u>
1980	32,226,703	151,383,359	27,591,943	211,202,005
1981	35,108,058	138,466,404	26,273,437	199,847,899
1982	35,606,463	128,818,906	24,940,981	189,366,350
1983	33,430,581	121,375,615	24,802,772	179,608,968
1984	32,730,382	127,476,082	27,036,480	187,242,944
1985	32,104,784	126,883,275	26,013,271	185,001,330
1986	29,551,497	124,563,098	26,796,139	180,910,734
1987	27,548,782	121,071,330	25,184,078	173,804,190
1988	26,676,734	115,075,497	24,493,279	166,245,510
1989	25,168,802	104,722,094	22,704,934	152,595,830
1990	25,802,526	99,620,106	22,829,541	148,252,173
1991	26,782,982	96,272,416	24,215,860	147,271,258
1992	25,742,391	93,841,676	23,490,830	143,074,897
1993	23,807,713	90,991,834	23,328,586	138,128,133
1994	20,995,988	83,413,329	22,764,469	127,173,786
1995	21,576,996	85,698,791	23,605,431	130,881,218
1996	23,107,913	88,960,163	22,715,043	134,783,119
1997	22,517,957	88,089,816	21,001,624	131,609,397
1998	20,542,390 <sup>2</sup>	88,470,669 <sup>2</sup>	18,553,610 <sup>2</sup>	127,566,669 <sup>2</sup>
1999	17,202,374 <sup>2</sup>	83,167,510 <sup>2</sup>	15,046,301 <sup>2</sup>	115,416,185 <sup>2</sup>
2000	15,666,903	80,103,716	13,853,735	109,624,355

**LOUISIANA NATURAL GAS AND CASINGHEAD GAS PRODUCTION**

Excluding Federal OCS


(MCF)

<u>YEAR</u>	<u>NORTH</u>	<u>SOUTH</u>	<u>OFFSHORE</u>	<u>TOTAL</u>
1980	369,629,050	1,931,815,001	408,784,123	2,710,228,174
1981	419,994,477	1,764,184,476	374,836,303	2,559,015,256
1982	378,425,680	1,535,623,176	359,584,749	2,273,633,605
1983	364,722,665	1,321,825,107	321,430,150	2,007,977,922
1984	386,892,055	1,390,697,247	318,007,698	2,095,597,000
1985	356,399,560	1,270,322,743	254,083,634	1,880,805,937
1986	368,975,585	1,235,668,406	249,821,614	1,854,465,605
1987	360,971,878	1,166,911,126	230,908,933	1,758,791,937
1988	377,676,702	1,179,489,165	216,099,358	1,773,265,225
1989	382,101,466	1,139,770,057	204,891,690	1,726,763,213
1990	383,171,052	1,113,235,576	178,663,048	1,675,069,676
1991	384,005,137	1,122,313,901	150,585,593	1,656,904,631
1992	370,427,975	1,120,079,647	146,614,287	1,637,121,909
1993	353,949,381	1,105,091,632	153,928,404	1,612,969,417
1994	355,898,500	1,038,247,818	157,107,321	1,551,253,639
1995	366,579,170	1,016,642,353	165,662,114	1,548,883,637
1996	414,561,586	1,021,322,975	184,113,484	1,619,998,045
1997	439,467,427	969,241,411	184,568,757	1,593,277,595
1998	427,282,598 <sup>2</sup>	937,930,841 <sup>2</sup>	175,490,099 <sup>2</sup>	1,540,703,538 <sup>2</sup>
1999	388,674,020 <sup>2</sup>	898,101,537 <sup>2</sup>	147,528,867 <sup>2</sup>	1,434,304,424 <sup>2</sup>
2000	351,384,330	875,717,454	143,589,879	1,370,691,663

<sup>1</sup> Estimated<sup>2</sup> Revised

<b>Spot Market Price Monthly Average</b>	
	<u>January 2001</u>
Louisiana Natural Gas (\$/MMBTU)	9.84
	<u>December 2000</u>
Louisiana Sweet Crude-St. James (\$/Barrel)	28.62
<b>PERMITS - Louisiana Jurisdiction Only</b>	
	<u>November 2000</u>
Total Oil and Gas	147
Wildcats	12
State Offshore (Wildcats included)	18

**Department of Natural Resources**  
Jack C. Caldwell, Secretary



**Technology Assessment Division**  
**Editorial Staff**

T. Michael French, Director  
William J. Delmar, Jr., Assistant Director  
Manuel L. Lam, Senior Analyst  
John Harter, Editor

E-mail: techasmt@dnr.state.la.us  
Phone:(225) 342-4593 Fax:(225) 342-2707

**The Louisiana Energy Facts is also available on DNR's home page. <http://www.dnr.state.la.us>**  
[Go to DNR's home page, click on the Newsletters button and select the Facts' issue.]

This issue of **Louisiana Energy Facts** is funded 100% (\$220.80) with Petroleum Violation Escrow funds as part of the State Energy Program as approved by the U.S. Department of Energy and the Department of Natural Resources

This public document was published at a total cost of \$220.80. 1,100 copies of this public document were published in this first printing at a total cost of \$220.80. The total cost of all printing of this document, including reprints, is \$220.80. This document was published by the Department of Natural Resources, P.O. Box 94396, Baton Rouge, LA 70804-9396 to promulgate the State Energy Program developed under authority of P.L. 94-163. This material was printed in accordance with the standards for printing by State agencies established pursuant to R.S. 43:31.

**Louisiana Department of Natural Resources**  
**Technology Assessment Division**  
**P.O. Box 94396**  
**Baton Rouge, LA 70804-9396**

January 2001  
**Louisiana Energy Facts**