

# LOUISIANA ENERGY FACTS

Louisiana Department of Natural Resources  
Technology Assessment Division

www.dnr.louisiana.gov/tad

## INSIDE

Highlights  
page 1

Louisiana Monthly  
Crude Oil &  
Condensate Production  
page 1

Current Oil & Gas Data  
page 2

2008 Louisiana State  
Producing Oil Wells,  
by Production Rate  
page 3

2008 Louisiana State  
Producing Gas Wells,  
by Production Rate  
page 3

Quick Facts  
page 4

Featured Articles  
and Inserts  
[Selected Louisiana Energy  
Statistics](#)



Department of Natural Resources  
Scott A. Angelle, Secretary

Technology Assessment Division  
T. Michael French, Director  
Manuel Lam, Senior Analyst

617 North Third Street  
Baton Rouge, LA 70802

Tel. (225) 342-1270  
Fax. (225) 242-1397  
Email: [techasmt@la.gov](mailto:techasmt@la.gov)  
[www.dnr.louisiana.gov/tad](http://www.dnr.louisiana.gov/tad)

## Highlights JULY 2009

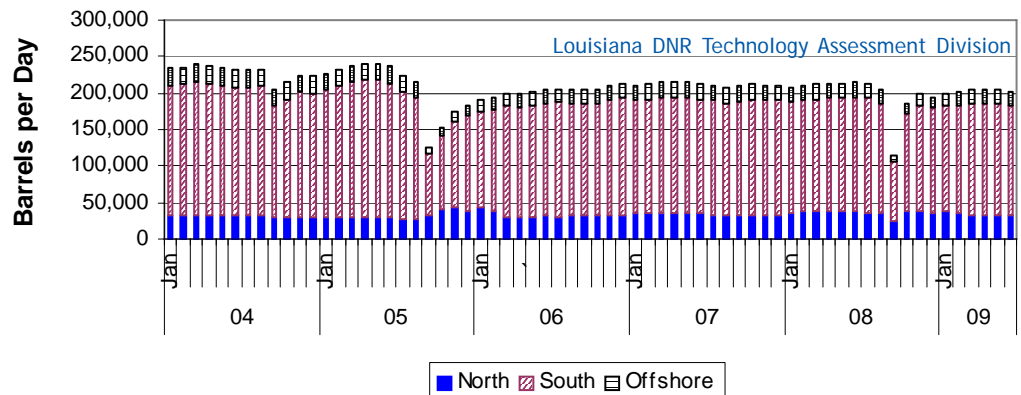
Spot market prices for natural gas have reversed their downward trend. Gas prices reached an eight-year low on April 27, 2009 at \$3.16 per MMBTU. May's average price was \$3.65 per MMBTU and June's average price was \$3.66 per MMBTU. The June price was 70.4% lower than the June 2008 price of \$12.35 per MMBTU. Despite the abundance of gas, experts are predicting that prices will rise in the near future. As of Friday, June 19, working gas in US underground storage was estimated at 2,651 BCF. This is 22.2% higher than the 5-year (2004-2008) average. Net injection into underground storage totaled 94 BCF. On the other hand, *Natural Gas Week* reported that Paul Corby, a Planalytics natural gas analyst, is predicting that by year-end natural gas will be trading in the \$7 to \$8 range.

### Louisiana Monthly Crude Oil & Condensate Production\*\*, Excluding Federal OCS

Month	Barrels/Day						% Change	
	2004	2005	2006	2007	2008	2009	07/08	08/09
January	233,632	226,993	191,443	211,360 <sup>2</sup>	206,278 <sup>2</sup>	200,298		-2.90%
February	235,607	232,006	194,061	211,457 <sup>2</sup>	209,601 <sup>2</sup>	201,100		-4.06%
March	240,406	238,200	199,608	216,356 <sup>2</sup>	211,540 <sup>2</sup>	204,993		-3.10%
April	236,065	241,141	198,345	215,936 <sup>2</sup>	213,416 <sup>2</sup>	204,647 <sup>1</sup>		-4.11%
May	235,448	240,452	200,913	215,575 <sup>2</sup>	212,889 <sup>2</sup>	204,404 <sup>1</sup>		-3.99%
June	230,497	236,110	204,916	213,186 <sup>2</sup>	214,672 <sup>2</sup>	201,218 <sup>1</sup>		-6.27%
July	231,724	222,435	205,773	210,654 <sup>2</sup>	213,964 <sup>2</sup>		1.57%	
August	233,006	214,431	205,344	206,807 <sup>2</sup>	203,405 <sup>2</sup>		-1.65%	
September	203,870	126,657	204,252	208,877 <sup>2</sup>	113,362 <sup>2</sup>		-45.73%	
October	215,554	153,099	204,051	211,500 <sup>2</sup>	186,289 <sup>2</sup>		-11.92%	
November	224,953	174,047	210,243	211,003 <sup>2</sup>	197,960 <sup>2</sup>		-6.18%	
December	222,396	183,266	212,485	211,361 <sup>2</sup>	193,370 <sup>2</sup>		-8.51%	
<b>Year Average</b>	<b>228,597</b>	<b>207,403</b>	<b>202,620</b>	<b>212,006<sup>2</sup></b>	<b>198,062<sup>2</sup></b>	<b>202,777<sup>*</sup></b>		

\* Partial Year

\*\*All data are revised; see July 2001 statistic changes explanation



## Current Oil & Gas Data

Louisiana DNR Technology Assessment Division

PRODUCTION	JAN 09	DEC 08	NOV 08	JAN 08
<b>LOUISIANA FEDERAL OFFSHORE (OCS)</b>				
Crude Oil & Condensate <sup>C</sup> (MMB)	35 <sup>1</sup>	32 <sup>1</sup>	29 <sup>1</sup>	37 <sup>1</sup>
Natural Gas & Casinghead <sup>C</sup> (BCF)	125 <sup>1</sup>	115 <sup>1</sup>	104 <sup>1</sup>	170 <sup>1</sup>
<b>THE UNITED STATES TOTAL</b>				
Crude Oil & Condensate <sup>C</sup> (MMB)	163	115 <sup>2</sup>	148	158
Natural Gas & Casinghead <sup>C</sup> (BCF)	1,782	1,783	1,730	1,711 <sup>2</sup>
<b>IMPORTS</b>				
U.S. Crude Oil <sup>C</sup> (MMB)	305	292	298	310
U.S. Natural Gas <sup>C</sup> (BCF)	358	368	322	388 <sup>2</sup>
<b>BAKER HUGHES RIG COUNTS</b>				
U.S. Gas <sup>A</sup>	1,215	1,380	1,498	1,421
U.S. Oil <sup>A</sup>	328	391	426	321
U.S. Offshore <sup>A</sup>	66	66	63	60
U.S. Total <sup>A</sup>	1,553	1,782	1,935	1,749
<b>PRICES</b>				
<b>CRUDE OIL (\$/barrel)</b>				
OPEC Average <sup>C</sup> (F.O.B.)	37.60	35.79	45.61 <sup>2</sup>	85.41
U.S. Imports Average <sup>C</sup> (F.O.B.)	36.85	34.23	44.95	83.43
U.S. Wellhead Average <sup>C</sup>	35.00	36.80	53.67	87.06
Gulf OCS Wellhead Average <sup>C</sup>	39.16	48.19	68.67	89.00
State Severance Wellhead Average <sup>E</sup>	58.12	80.01	98.89	91.05
<b>NATURAL GAS (\$/MCF)</b>				
U.S. City Gates Average <sup>C</sup>	7.95	8.16	7.93	8.37 <sup>2</sup>
U.S. Imports Average <sup>C</sup> (F.O.B.)	6.18	6.73	6.54	7.66 <sup>2</sup>
U.S. Wellhead Average <sup>C</sup>	5.15	5.87	5.97	6.99
State Royalty Wellhead Average	5.93	6.57	7.00	8.14
NYMEX Henry Hub End of the Month Settle Gas Price <sup>B</sup> (\$/MMBTU)	6.14	6.89	6.47	7.17

### Key

### Data Sources

<b>1</b>	Estimated	<b>MCF</b>	Thousand Cubic Feet
<b>2</b>	Revised	<b>MMB</b>	Million Barrels
<b>BCF</b>	Billion Cubic Feet	<b>NA</b>	Not Available
<b>BTU</b>	British Thermal Unit	<b>OCS</b>	Outer Continental Shelf
<b>FO.B.</b>	Free on Board	<b>MMBTU</b>	Million British Thermal Units

<b>A</b>	Oil & Gas Journal	<b>D</b>	Natural Gas Week
<b>B</b>	Wall Street Journal	<b>E</b>	LA Dept of Revenue
<b>C</b>	U. S. Dept. of Energy		

**Note:** Unless otherwise specified, data is from the Louisiana Department of Natural Resources and excludes Federal OCS.

### Note from the Editors

*Louisiana Energy Facts* is published monthly by the Louisiana Department of Natural Resources, Technology Assessment Division as a public service to individuals interested in Louisiana energy activities. Content includes recent oil, gas and other energy statistics and a brief analysis of current trends.

*Louisiana Energy Facts* articles provide insight and information on subjects of special interest to our readers, and may announce relevant, forthcoming publications.

These documents are available on the Louisiana Department of Natural Resources, Technology Assessment Division home page: <http://www.dnr.louisiana.gov/tad>. From the menu, select **Energy Data & Reports**; choose **Louisiana Energy Facts Newsletter**. Our current online holdings include issues dating from 1998 through the present. If the issue you are seeking is unavailable, please contact us.

To request a subscription or update your mailing address, contact us with your information. Please specify print or electronic subscription. We value your feedback. Please send your comments and suggestions for improving and enhancing the newsletter to: [techasmt@la.gov](mailto:techasmt@la.gov).

## 2008 Louisiana State Producing Oil Wells, by Production Rate

### OCS Wells Excluded

Louisiana DNR Technology Assessment Division

<u>PRODUCTION BRACKET</u>	<u>NUMBER OF WELLS</u>		<u>TOTAL ANNUAL PRODUCTION</u>	
	<u>BARRELS/DAY</u>	<u>WELLS</u>	<u>% TOTAL WELLS</u>	<u>BARRELS/YEAR</u>
Less than or equal 10	18,110	86.11%	9,934,278	13.76%
Between 10 - 15	688	3.27%	3,472,894	4.81%
Between 15 - 20	465	2.21%	3,430,448	4.75%
Between 20 - 30	587	2.79%	5,934,451	8.22%
Between 30 - 40	289	1.37%	4,324,828	5.99%
Between 40 - 50	157	0.75%	3,108,339	4.30%
Between 50 - 75	315	1.50%	8,001,058	11.08%
Between 75 - 100	124	0.59%	4,346,415	6.02%
Between 100 - 150	122	0.58%	6,243,698	8.65%
Between 150 - 200	65	0.31%	4,668,276	6.46%
Between 200 - 300	47	0.22%	5,270,267	7.30%
Between 300 - 500	42	0.20%	5,878,750	8.14%
Between 500 - 1,000	17	0.08%	5,360,472	7.42%
Between 1,000 - 2,000	2	0.01%	860,752	1.19%
Between 2,000 - 5,000	1	0.00%	1,376,454	1.91%
Over 5000	0	0.00%	0	0.00%

## 2008 Louisiana State Producing Gas Wells, by Production Rate

### OCS Wells Excluded

Louisiana DNR Technology Assessment Division

<u>PRODUCTION BRACKET</u>	<u>NUMBER OF WELLS</u>		<u>TOTAL ANNUAL PRODUCTION</u>	
	<u>MCF/DAY</u>	<u>WELLS</u>	<u>% TOTAL WELLS</u>	<u>MCF/YEAR</u>
Less than or equal 50	12,054	64.03%	27,292,181	2.01%
Between 50 - 60	345	1.83%	6,099,408	0.45%
Between 60 - 70	358	1.90%	7,288,559	0.54%
Between 70 - 80	306	1.63%	7,208,077	0.53%
Between 80 - 90	317	1.68%	8,350,749	0.62%
Between 90 - 100	242	1.29%	7,130,911	0.53%
Between 100 - 250	2,164	11.49%	111,853,746	8.24%
Between 250 - 400	1,315	6.98%	128,803,863	9.49%
Between 400 - 800	1,008	5.35%	176,544,602	13.01%
Between 800 - 1,600	396	2.10%	146,092,507	10.76%
Between 1,600 - 3,200	147	0.78%	119,596,998	8.81%
Between 3,200 - 6,400	99	0.53%	155,698,493	11.47%
Between 6,400 - 12,800	56	0.30%	244,320,543	18.00%
Between 12,800 - 25,600	17	0.09%	116,510,486	8.58%
Over 25,600	3	0.02%	94,517,647	6.96%

This issue of **Louisiana Energy Facts** is funded 100% (\$1,066) with Petroleum Violation Escrow funds as part of the State Energy Program as approved by the U.S. Department of Energy and Department of Natural Resources. This public document was published at a total cost of \$1,066. 1,025 copies of this public document were published in this first printing at a total cost of \$1,066. The total cost of all printing of this document, including reprints, is \$1,066. This document was published by the Department of Natural Resources, P.O. Box 94396, Baton Rouge, LA 70804-9396 to promulgate the State Energy Program developed under authority of P.L. 94-163. This material was printed in accordance with the standards for printing by State agencies established pursuant to R.S. 43.31.



LOUISIANA DEPARTMENT OF NATURAL RESOURCES  
 Technology Assessment Division  
 P. O. Box 94396  
 Baton Rouge, LA 70804-9396

PRST STD  
 U.S. POSTAGE  
**PAID**  
 BATON ROUGE, LA  
 PERMIT NO. 936

## ADDRESS SERVICE REQUESTED

### INSIDE

**Highlights**  
page 1

**Louisiana Monthly  
Crude Oil &  
Condensate Production**  
page 1

**Current Oil & Gas Data**  
page 2

**2008 Louisiana State  
Producing Oil Wells,  
by Production Rate**  
page 3

**2008 Louisiana State  
Producing Gas Wells,  
by Production Rate**  
page 3

**Quick Facts**  
page 4

**Featured Articles  
and Inserts**  
[Selected Louisiana Energy  
Statistics](#)

## Quick Facts

## JULY 2009

Louisiana DNR Technology Assessment Division

	Jun 09	May 09	Jun 08
<b>SPOT MARKET PRICES</b>			
Louisiana Natural Gas <sup>D</sup> (\$/MMBTU)	3.66	3.65	12.35
NYMEX Henry Hub Last Settle Gas Price <sup>B</sup> (\$/MMBTU)	3.95	3.33	11.92
Louisiana Sweet Crude - St. James <sup>B</sup> (\$/Barrel)	71.15	60.29 <sup>2</sup>	137.91
<b>BAKER HUGHES RIG COUNTS</b>			
	May 09	Apr 09	May 08
North Louisiana <sup>A</sup>	77	74	52
South Louisiana Inland Waters <sup>A</sup>	6	5	22
South Louisiana Inland <sup>A</sup>	11	14	21
Louisiana State Offshore	2	0	4
Louisiana Federal OCS Offshore	45	41	52
Total Louisiana <sup>A</sup> (OCS included)	141	134	151
<b>PRODUCTION (State Jurisdiction Only)</b>			
	May 09	Apr 09	May 08
Louisiana Crude Oil & Condensate (MMB)	6.3 <sup>1</sup>	6.1 <sup>1</sup>	6.6
Louisiana Natural Gas & Casinghead (BCF)	117.2 <sup>1</sup>	113.4 <sup>1</sup>	119.5 <sup>2</sup>
<b>DRILLING PERMITS (State Jurisdiction Only)</b>			
	May 09	Apr 09	May 08
Total Louisiana Oil and Gas	97	108	228
Louisiana Wildcats	1	3	10
Louisiana Offshore (Wildcats included)	1	2	4