

# LOUISIANA ENERGY FACTS

Louisiana Department of Natural Resources  
Technology Assessment Division

[www.dnr.louisiana.gov/tad](http://www.dnr.louisiana.gov/tad)

## INSIDE

**Highlights**  
page 1

**Louisiana Natural Gas  
Average Spot Prices**  
page 1

**Current Oil & Gas Data**  
page 2

**Louisiana Mineral  
Severance Tax Revenue  
by Source**  
page 3

**Louisiana Mineral Royalty  
Revenue by Source**  
page 3

**Quick Facts**  
page 4

### Featured Articles and Inserts

[Green Building Begins  
with the Design](#)

[Highlights of the  
17th Edition of the  
Louisiana Crude Oil Refinery  
Survey Report](#)



Department of Natural Resources  
**Scott A. Angelle**, Secretary

Technology Assessment Division  
**T. Michael French**, Director  
**Manuel Lam**, Senior Analyst

617 North Third Street  
Baton Rouge, LA 70802

Tel. (225) 342-1270  
Fax. (225) 242-1397  
Email: [techasmt@la.gov](mailto:techasmt@la.gov)  
[www.dnr.louisiana.gov/tad](http://www.dnr.louisiana.gov/tad)

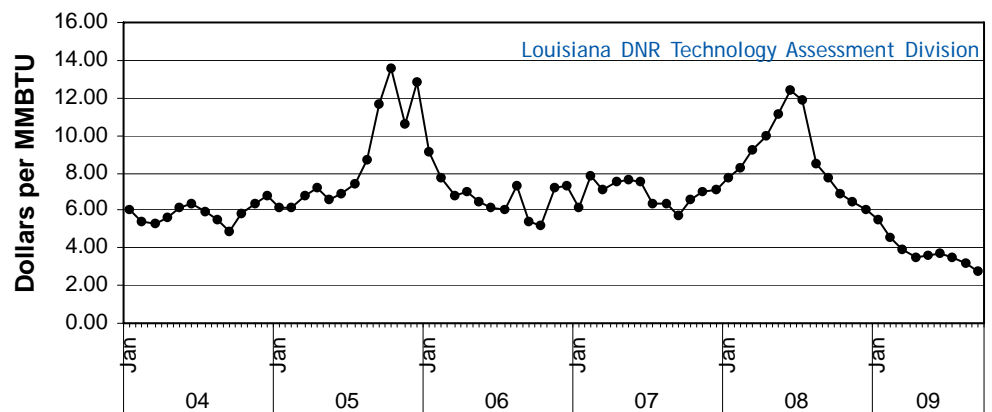
## Highlights OCTOBER 2009

The Louisiana natural gas price at the Henry Hub reached a low of \$1.87 per MMBTU on September 8, 2009. By the end of September the price had recovered to \$3.26 per MMBTU. The last time prices were this low was December 6, 2001 when the price had fallen to \$1.82 per MMBTU. Despite the recent rise, the gas price is 75% off the July 2008 high of \$13.31 per MMBTU. Prices are low because the domestic production from the shale wells is increasing the gas supply which was already at high levels, and the economic downturn is reducing demand.

### Louisiana Natural Gas Average Spot Prices\*\*

Month	(Dollars per MMBTU)						% Change	
	2004	2005	2006	2007	2008	2009	07/08	08/09
January	6.07	6.18	9.11	6.12	7.78	5.55		-28.62%
February	5.38	6.10	7.72	7.88	8.24	4.60		-44.17%
March	5.32	6.76	6.77	7.15	9.23	3.97		-57.00%
April	5.67	7.18	7.05	7.50	9.94	3.54		-64.39%
May	6.10	6.55	6.46	7.59	11.14	3.65		-67.26%
June	6.33	6.89	6.19	7.51	12.35	3.66		-70.37%
July	5.94	7.39	6.00	6.36	11.87	3.46		-70.88%
August	5.55	8.65	7.27	6.33	8.52	3.18		-62.69%
September	4.91	11.70	5.41	5.70	7.77	2.78		-64.21%
October	5.80	13.61	5.17	6.53	6.85		4.94%	
November	6.33	10.55	7.23	6.96	6.51		-6.46%	
December	6.76	12.86	7.33	7.11	6.08		-14.47%	
<b>Year Average</b>	<b>5.85</b>	<b>8.70</b>	<b>6.81</b>	<b>6.89</b>	<b>8.86</b>	<b>3.82</b> **		

\*\* Partial Year



## Current Oil & Gas Data

Louisiana DNR Technology Assessment Division

PRODUCTION	APR 09	MAR 09	FEB 09	APR 08
<b>LOUISIANA FEDERAL OFFSHORE (OCS)</b>				
Crude Oil & Condensate <sup>C</sup> (MMB)	26 <sup>1</sup>	27 <sup>1</sup>	28 <sup>1</sup>	36 <sup>1</sup>
Natural Gas & Casinghead <sup>C</sup> (BCF)	119 <sup>1</sup>	124 <sup>1</sup>	116 <sup>1</sup>	154 <sup>1</sup>
<b>THE UNITED STATES TOTAL</b>				
Crude Oil & Condensate <sup>C</sup> (MMB)	157	163	145 <sup>2</sup>	154 <sup>2</sup>
Natural Gas & Casinghead <sup>C</sup> (BCF)	1,746	1,810 <sup>2</sup>	1,638 <sup>2</sup>	1,679
<b>IMPORTS</b>				
U.S. Crude Oil <sup>C</sup> (MMB)	282	292	258	299 <sup>2</sup>
U.S. Natural Gas <sup>C</sup> (BCF)	312	324	322	321 <sup>2</sup>
<b>BAKER HUGHES RIG COUNTS</b>				
U.S. Gas <sup>A</sup>	775	867	1,037	1,461
U.S. Oil <sup>A</sup>	209	225	271	358
U.S. Offshore <sup>A</sup>	48	46	57	64
U.S. Total <sup>A</sup>	995	1,105	1,320	1,829
<b>PRICES</b>				
<b>CRUDE OIL (\$/barrel)</b>				
OPEC Average <sup>C</sup> (F.O.B.)	48.67	45.75	39.71	108.19 <sup>2</sup>
U.S. Imports Average <sup>C</sup> (F.O.B.)	47.62	44.34 <sup>2</sup>	38.08	104.04 <sup>2</sup>
U.S. Wellhead Average <sup>C</sup>	45.22	42.46	34.14	106.64
Gulf OCS Wellhead Average <sup>C</sup>	46.32	44.36	38.77	104.68
State Severance Wellhead Average <sup>E</sup>	34.55	39.06	39.23	92.09
<b>NATURAL GAS (\$/MCF)</b>				
U.S. City Gates Average <sup>C</sup>	5.70	6.86	7.25	9.84
U.S. Imports Average <sup>C</sup> (F.O.B.)	3.67	4.35	5.21	8.94 <sup>2</sup>
U.S. Wellhead Average <sup>C</sup>	3.43	3.72	4.19	9.61 <sup>2</sup>
State Royalty Wellhead Average	6.51	4.25 <sup>2</sup>	4.81 <sup>2</sup>	10.85 <sup>2</sup>
NYMEX Henry Hub End of the Month Settle Gas Price <sup>B</sup> (\$/MMBTU)	3.63	4.06	4.48	9.58

### Key

### Data Sources

<b>1</b>	Estimated	<b>MCF</b>	Thousand Cubic Feet	<b>A</b>	Oil & Gas Journal	<b>D</b>	Natural Gas Week
<b>2</b>	Revised	<b>MMB</b>	Million Barrels	<b>B</b>	Wall Street Journal	<b>E</b>	LA Dept of Revenue
<b>BCF</b>	Billion Cubic Feet	<b>NA</b>	Not Available	<b>C</b>	U. S. Dept. of Energy		
<b>BTU</b>	British Thermal Unit	<b>OCS</b>	Outer Continental Shelf	<b>Note:</b> Unless otherwise specified, data is from the Louisiana Department of Natural Resources and excludes Federal OCS.			
<b>FO.B.</b>	Free on Board	<b>MMBTU</b>	Million British Thermal Units				

### Note from the Editors

**Louisiana Energy Facts** is published monthly by the Louisiana Department of Natural Resources, Technology Assessment Division as a public service to individuals interested in Louisiana energy activities. Content includes recent oil, gas and other energy statistics and a brief analysis of current trends.

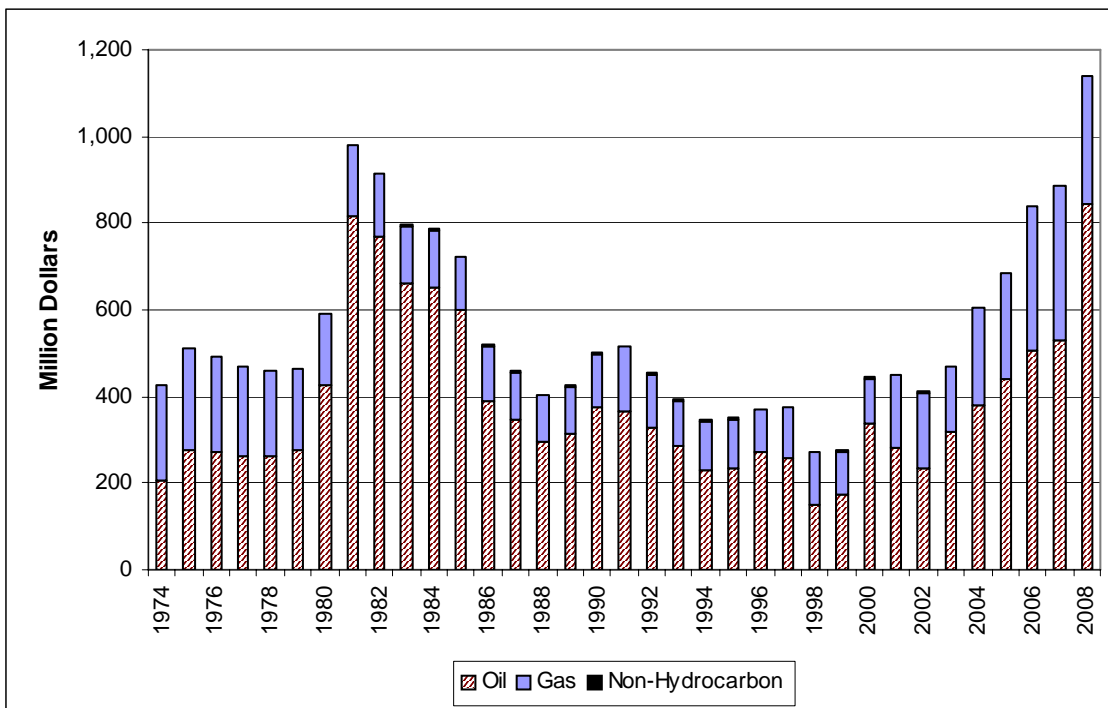
**Louisiana Energy Facts** articles provide insight and information on subjects of special interest to our readers, and may announce relevant, forthcoming publications.

These documents are available on the Louisiana Department of Natural Resources, Technology Assessment Division home page: <http://www.dnr.louisiana.gov/tad>. From the menu, select **Energy Data & Reports**; choose **Louisiana Energy Facts Newsletter**. Our current online holdings include issues dating from 1998 through the present. If the issue you are seeking is unavailable, please contact us.

**To request a subscription or update your mailing address**, contact us with your information. Please specify print or electronic subscription. **We value your feedback.** Please send your comments and suggestions for improving and enhancing the newsletter to: [techasmt@la.gov](mailto:techasmt@la.gov).

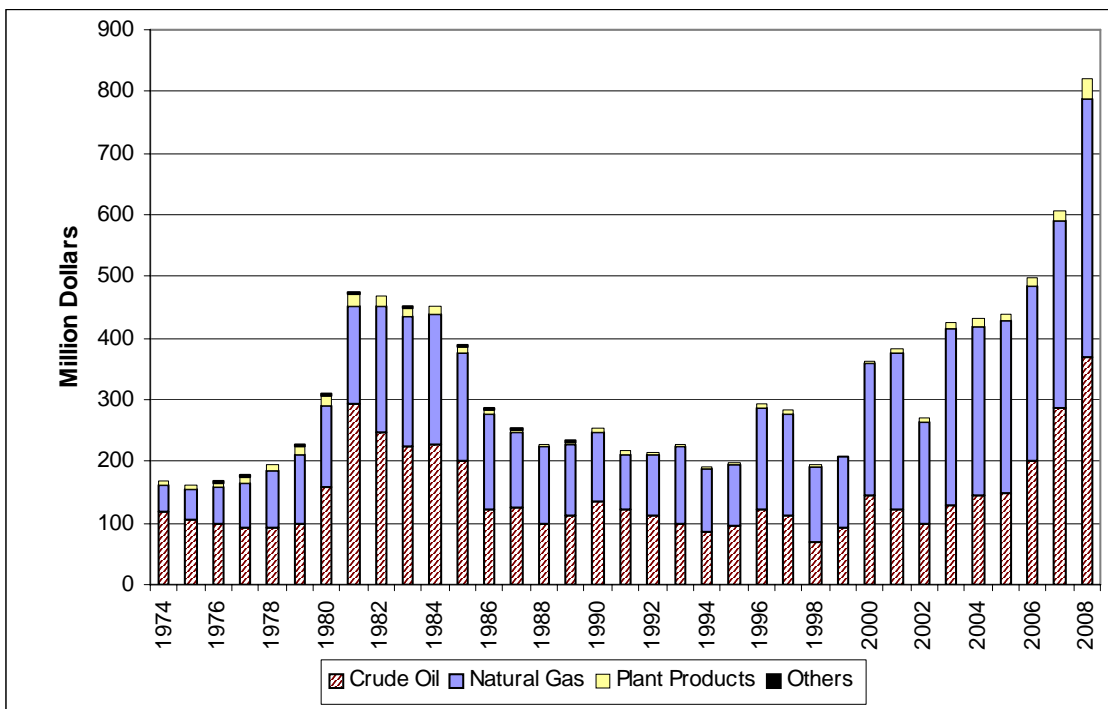
# Louisiana Mineral Severance Tax Revenue by Source, Excluding Federal OCS

Louisiana DNR Technology Assessment Division



# Louisiana Mineral Royalty Revenue by Source, Excluding Federal OCS

Louisiana DNR Technology Assessment Division



This issue of **Louisiana Energy Facts** is funded 100% (\$1,066) with Petroleum Violation Escrow funds as part of the State Energy Program as approved by the U.S. Department of Energy and Department of Natural Resources. This public document was published at a total cost of \$1,066. 1,025 copies of this public document were published in this first printing at a total cost of \$1,066. The total cost of all printing of this document, including reprints, is \$1,066. This document was published by the Department of Natural Resources, P.O. Box 94396, Baton Rouge, LA 70804-9396 to promulgate the State Energy Program developed under authority of P.L. 94-163. This material was printed in accordance with the standards for printing by State agencies established pursuant to R.S. 43.31.



**LOUISIANA DEPARTMENT OF NATURAL RESOURCES**  
*Technology Assessment Division*  
 P. O. Box 94396  
 Baton Rouge, LA 70804-9396

PRST STD  
 U.S. POSTAGE  
**PAID**  
 BATON ROUGE, LA  
 PERMIT NO. 936

## ADDRESS SERVICE REQUESTED

### INSIDE

**Highlights**  
page 1

**Louisiana Natural Gas  
Average Spot Prices**  
page 1

**Current Oil & Gas Data**  
page 2

**Louisiana Mineral  
Severance Tax Revenue  
by Source**  
page 3

**Louisiana Mineral Royalty  
Revenue by Source**  
page 3

**Quick Facts**  
page 4

**Featured Articles  
and Inserts**  
*Green Building Begins  
with the Design*

*Highlights of the  
17th Edition of the  
Louisiana Crude Oil Refinery  
Survey Report*

## Quick Facts

## OCTOBER 2009

Louisiana DNR Technology Assessment Division

### SPOT MARKET PRICES

	Sep 09	Aug 09	Sep 08
Louisiana Natural Gas <sup>D</sup> (\$/MMBTU)	2.78	3.18	7.77
NYMEX Henry Hub Last Settle Gas Price <sup>B</sup> (\$/MMBTU)	2.84	3.38	8.39
Louisiana Sweet Crude - St. James <sup>B</sup> (\$/Barrel)	70.18	74.31	107.07

### BAKER HUGHES RIG COUNTS

	Aug 09	Jul 09	Aug 08
North Louisiana <sup>A</sup>	89	81	80
South Louisiana Inland Waters <sup>A</sup>	7	8	26
South Louisiana Inland <sup>A</sup>	14	11	28
Louisiana State Offshore	1	1	4
Louisiana Federal OCS Offshore	24	32	50
Total Louisiana <sup>A</sup> (OCS included)	135	133	188

### PRODUCTION (State Jurisdiction Only)

	Aug 09	Jul 09	Aug 08
Louisiana Crude Oil & Condensate (MMB)	5.6	5.7	6.3
Louisiana Natural Gas & Casinghead (BCF)	112.7	117.4	118.4 <sup>2</sup>

### DRILLING PERMITS (State Jurisdiction Only)

	Aug 09	Jul 09	Aug 08
Total Louisiana Oil and Gas	105	123	308
Louisiana Wildcats	4	1	8
Louisiana Offshore (Wildcats included)	1	2	4