

Four Bayou Pass Oil Spill 1999

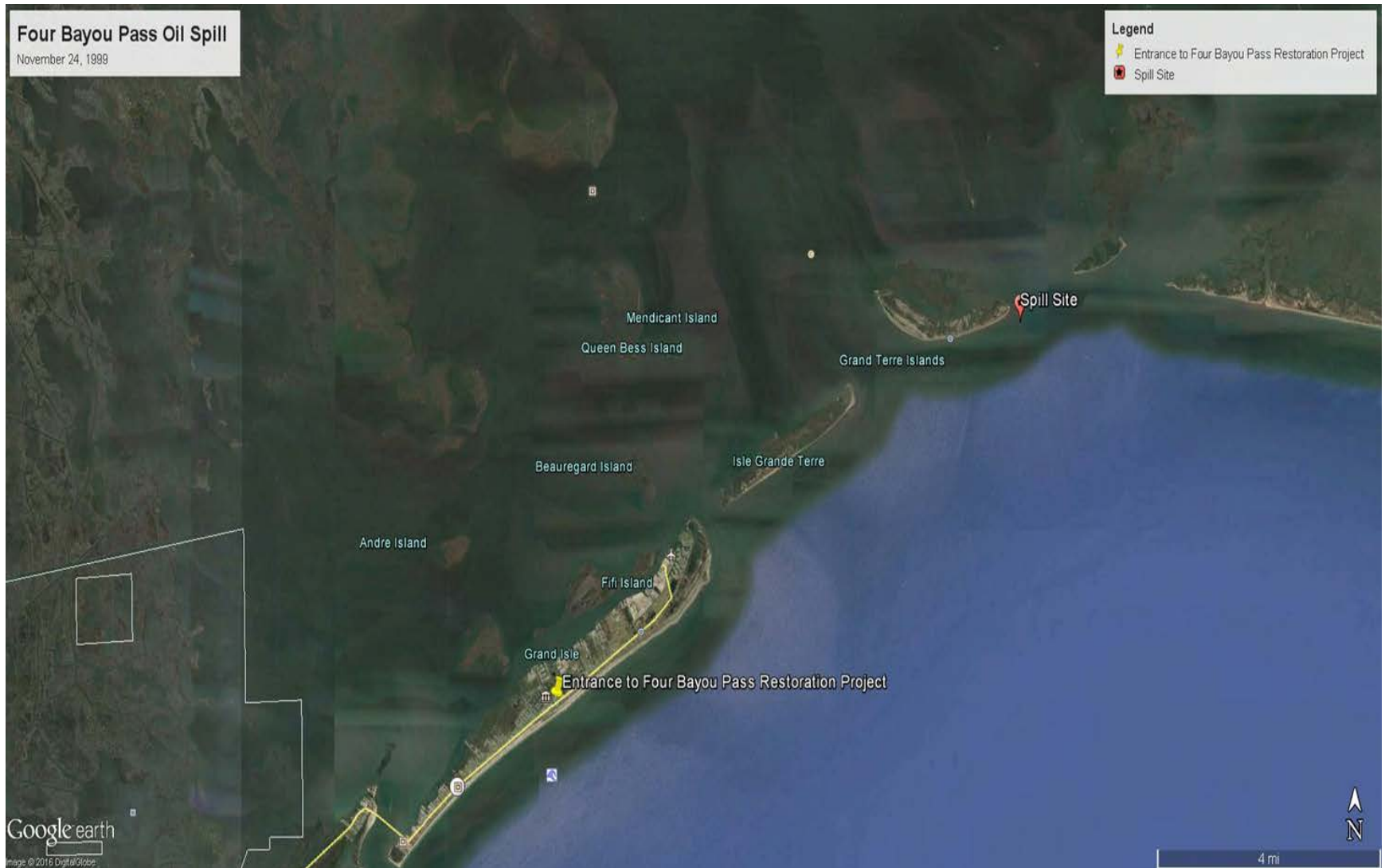
Gina Muhs Saizan
Louisiana Oil Spill Coordinator's Office/DPS
Chevron NRDA Training



Four Bayou Pass Oil Spill

- November 24, 1999
- Pressure drop on a 20" crude oil pipeline
- ~850 bbls of crude oil was released
- MARS blend sour crude

Area Map



Overflights

- Used to survey area for oil (preSCAT) on Thanksgiving Day
 - Found heavy oil on sand beaches
 - Found marsh impacts
 - Found ~ 50 oiled white pelicans
 - Found many birds at risk to oiling

Response

- Day 1 – Black oil in Four Bayou and Barataria Passes and sheen to Caminada Pass
- Day 2 - Mechanical recovery (i.e. skimmers)
- Day 3 - Moved from open water-shoreline protection to shoreline assessment and cleanup

11/24/1999

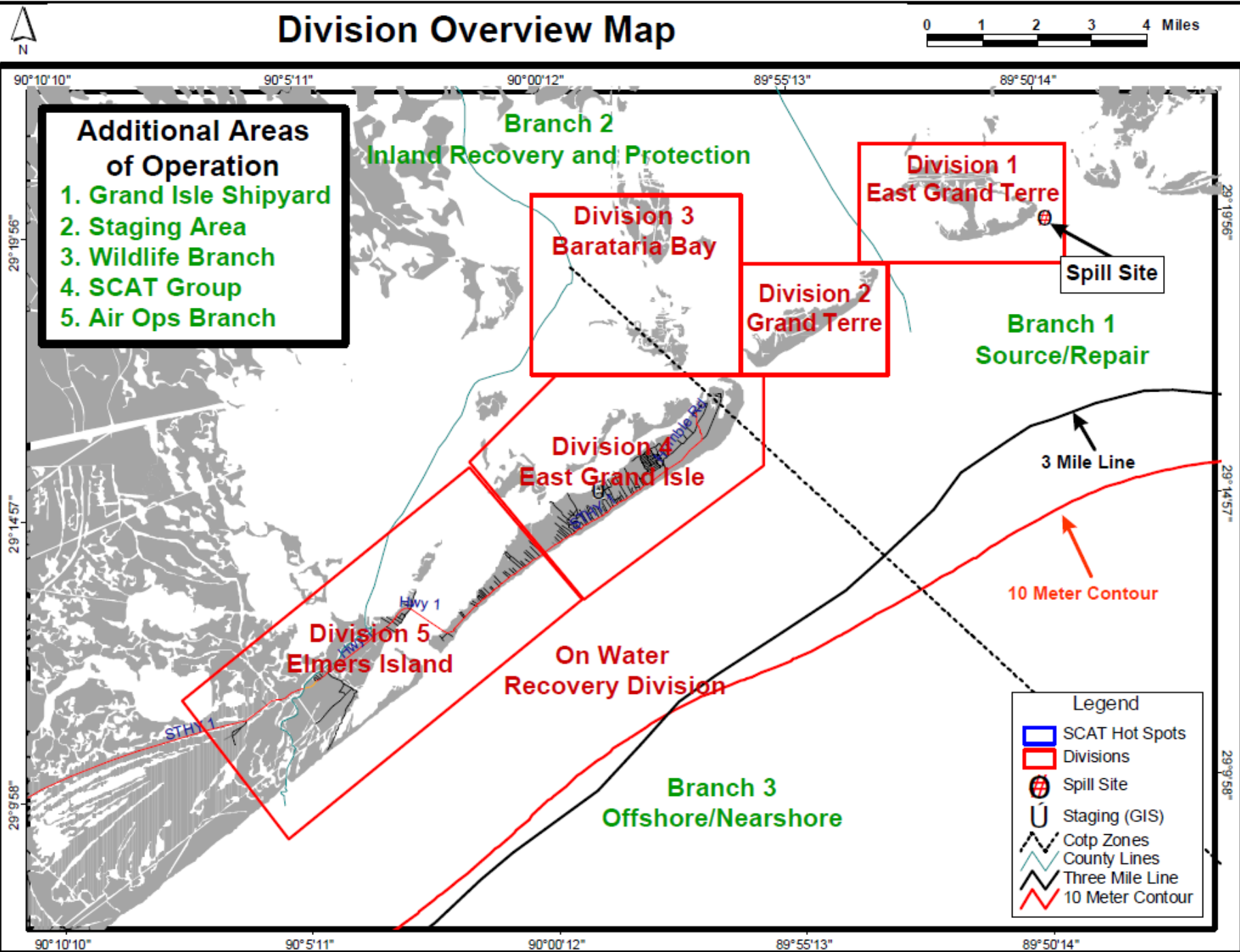
SCAT

- SCAT Teams - State, Federal, and Chevron representatives
- SCAT identified cleanup priorities, methods, and endpoints
 - Priority - heavily oiled sand beaches
 - Preferred cleanup method - manual removal
 - Emphasis on minimizing sand loss

11/28/1999

Division Overview Map

0 1 2 3 4 Miles



Personnel and Equipment

- 100+ cleanup workers
- ~9,000 ft. hard boom deployed
- 4 skimming vessels
- Helicopter
- Wildlife Rehab trailer



11/28/199

Alternative Technologies Considered

- Dispersants
 - Delayed - air crew in Puerto Rico
 - RRT VI convened but no vote requested
- In-situ burn considered for Grand Terre marsh
 - Oil thought to be too weathered

Public and Media

- Safety Zone established
- Notice to Mariners
- JIC established
 - 3 formal joint press releases
- Wildlife Hotline established
- Third-Party Claims Hotline established
- Grand Isle State Park oiled

11/24/1999

Response Continued

- Day 4 – Oil removal from sand beach
- Day 5 to 7 – Oil removal from Grand Terre marsh & Grand Isle at Conoco's facility (concrete revetment)
- Day 8 – Passive Maintenance started
- Day 30 – Response ended

Natural Resources

- Black oil streamers and rainbow sheens on Gulf, in passes, and bay for several days = Aquatic Injuries



- Black oil on beaches and marshes of barrier islands (Elmer's Island, Grand Isle, Grand Terre, and East Grand Terre) = Habitat Injuries
- Birds Oiled = Wildlife Injuries
- State Park and boat launch closures = Recreational Use Injuries

Oiled Beach



11/28/1999

A photograph of a marsh area heavily contaminated with oil. The water is dark and reflective, showing the surrounding tall, yellowish-brown grasses. The grasses are partially submerged and appear to be coated in a dark, viscous substance. The overall scene depicts a significant environmental impact.

Oiled Marsh

11/27/1999

A photograph of a coastal area where mudflats are covered in a thick layer of dark, viscous oil. The oil is spread across the wet, dark mud, creating a glossy, black surface. In the background, there is a dense stand of tall, yellowish-brown grasses. Beyond the grass, a body of blue water is visible under a clear sky. The text "Oiled Mudflats" is overlaid in large, bold, yellow letters in the center of the image. A shadow of the person taking the photo is visible in the lower-left foreground.

Oiled Mudflats

11/27/1999

Natural Resource Damage Assessment (NRDA)

- RP Invite issued
- Chevron accepted
- Injury Categories
 - Aquatic
 - Habitat
 - Wildlife
 - Recreational/Human Use

Aquatic

- Water Column

- Hundreds of acres of surface waters were exposed to black oil and sheen

- = 967 kg of fish, crabs, and shrimp lost

- Injuries quantified by SIMAP

Habitat

- Habitat injuries

- ~ 4.5 acres of marsh habitat was exposed to black oil

- (Including Grand Terre CWPPRA project where pooled oil impacted unconsolidated fill sediments and was unable to be cleaned)

- Injuries Quantified with HEA

Wildlife

- Wildlife injuries
 - 15 oiled birds captured, rehabbed and released
 - 88 oiled live birds were observed
 - 103 birds injured or killed

Recreational/Human Use

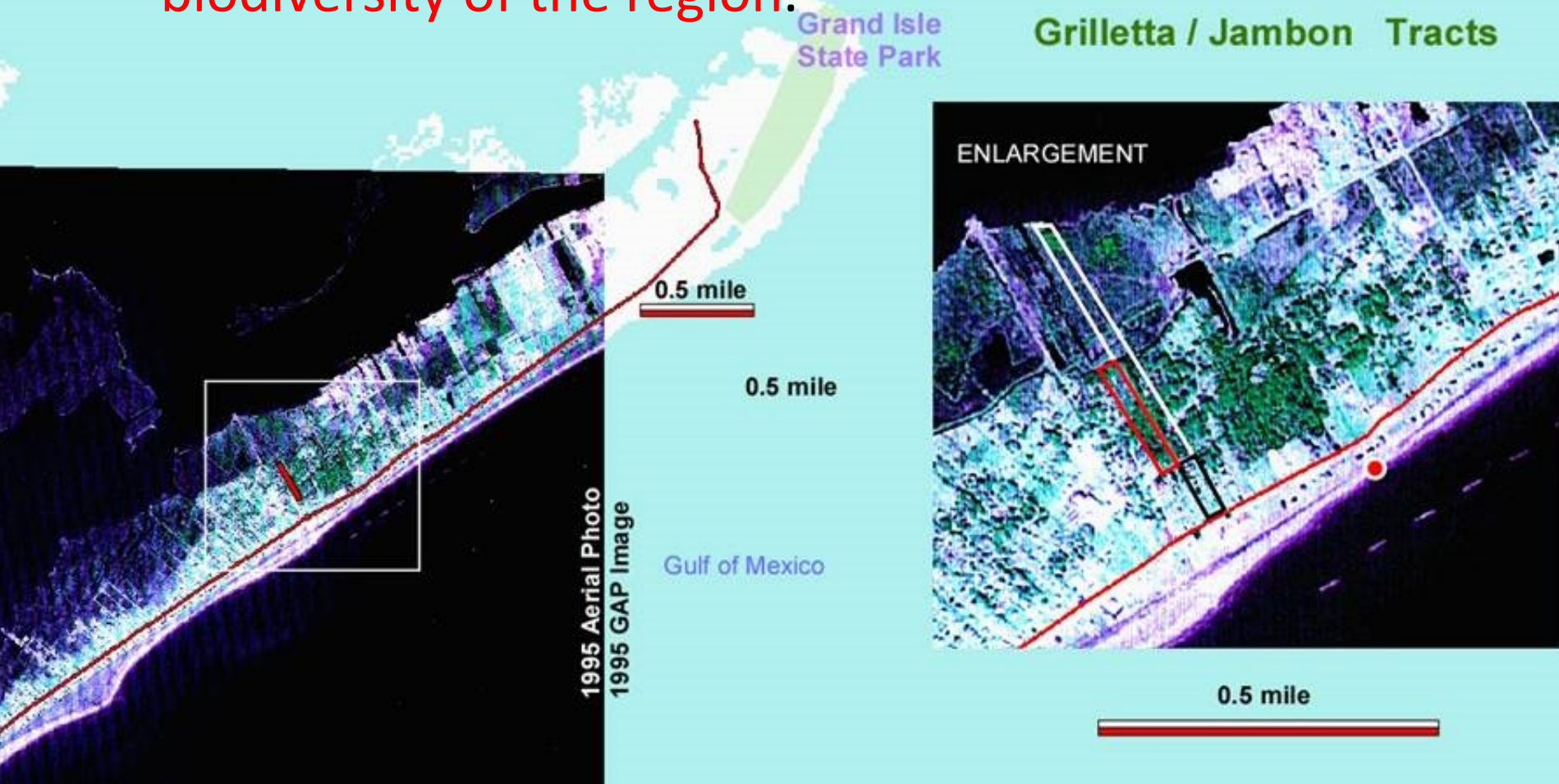
- Recreational/Human Use injuries
 - State park beach closure
 - Boat launch closure

Restoration Planning and Settlement

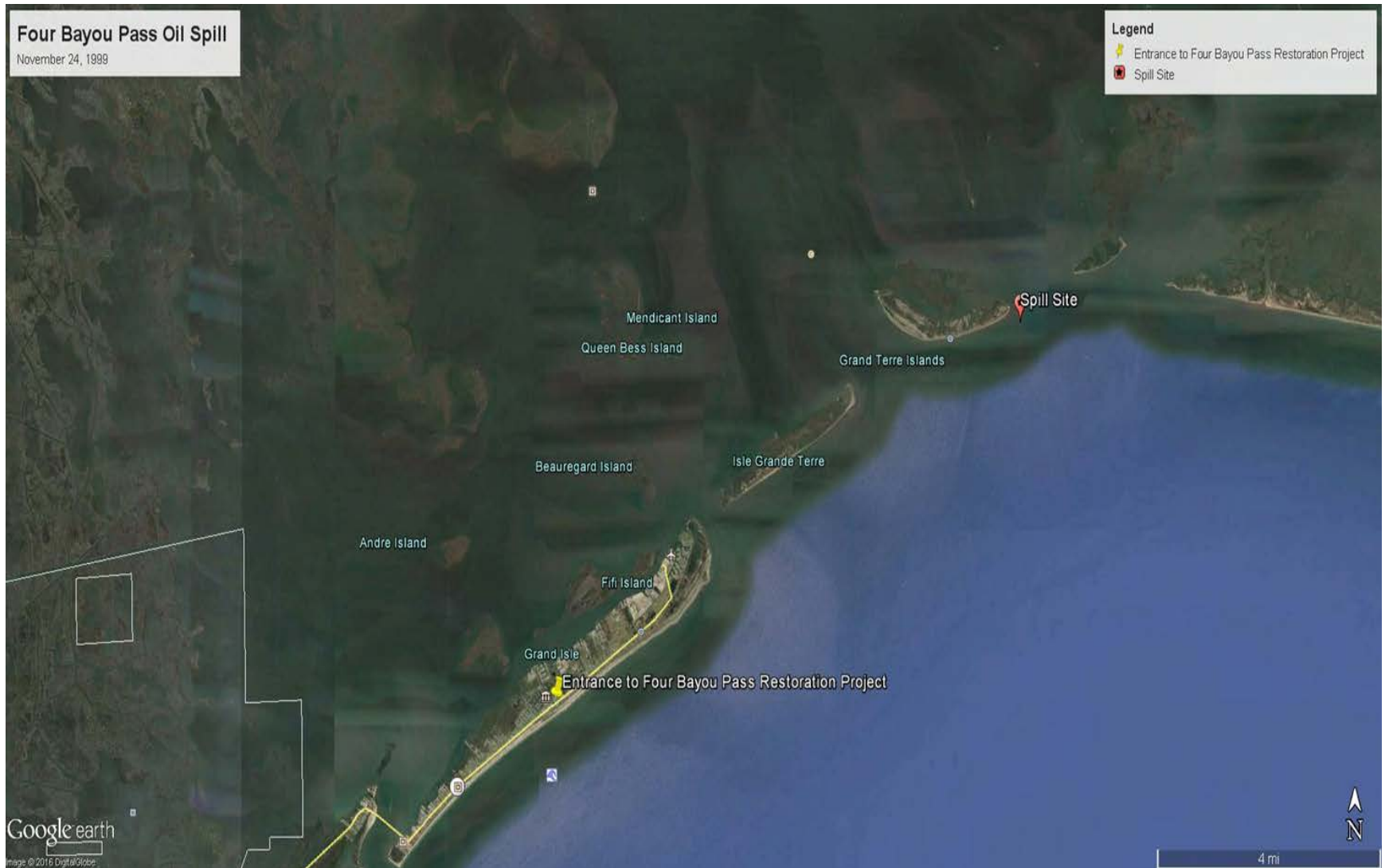
- NOI
- Project solicitation
- Chevron proposed 2.54 acre acquisition project on Grand Isle
- Draft DARP issued
- Chevron provided funds for TNC to purchase property
- Conservation Servitude
- Settlement Signed

Four Bayou Pass Restoration Project

Acquisition of 2.54 acre tract of imperiled property managed to restore and enhance the native biodiversity of the region.



Area Map



Restoration Project

- Tract of land was purchased by The Nature Conservancy on January 31, 2001
- TNC immediately started management activities
- Conservation Servitude signed in 2003 and is in effect for 30 years





Conservation Servitude

Prohibits:

- Construction of buildings
- Subdividing or partitioning of property
- Pesticide or herbicide use on non-native plants
- Storage or dumping of ashes, waste, or hazardous substances
- Use of motorized vehicles on the property
- Excavation or removal of minerals
- Sport hunting
- Alteration of the natural drainage or flood patterns
- Ends 9/15/2033

NW Passage High School Volunteers



ACTIVITIES

- Trash removal events
- Non-native species removal events

Results of Air Potato "Round-up"



A photograph of three young boys in a field of tall, dry grass and green plants. One boy in a grey hoodie is holding a small plant in a black pot. Another boy in a black hoodie is in the foreground, and a third boy is partially visible behind him. The scene is outdoors with bright sunlight.

ACTIVITIES

**Nature Club
Students Planting Trees**

ACTIVITIES

- **National Audubon Society Conducts Annual Bird Banding**
- **Audubon Society & BTNEP has annual Grand Isle Migratory Bird Festival that attracts birders from around the world**



MONITORING

- Quarterly calls
- TNC provides an Annual Report to LOSCO
- Trustees conduct periodic site visits





Improvements

The End

A wide-angle photograph of a vast body of water under a heavy, dark sky. The sun is low on the horizon, creating a bright glow and long, shimmering reflections on the water's surface. A large, dark landmass, possibly an island or a headland, stretches across the middle ground. In the lower-left foreground, a small boat is visible, leaving a white wake behind it. The overall mood is somber and dramatic.

11/24/1999