

TRACT 41441 - St. Mary Parish, Louisiana

All of the lands now or formerly constituting the beds and bottoms of all water bodies of every nature and description the title of which vests in the State of Louisiana, together with all islands arising therein and other lands formed by accretion or by reliction, where allowed by law, excepting tax adjudicated lands, and not presently under mineral lease on May 12, 2010, situated in St. Mary Parish, Louisiana, and more particularly described as follows: Beginning at a point having Coordinates of X = 1,897,585.00 and Y = 379,191.00; thence East 7,924.00 feet to a point having Coordinates of X = 1,905,509.00 and Y = 379,191.00; thence South 8,090.33 feet to a point on the North boundary of State Lease No. 13470 having Coordinates of X = 1,905,509.00 and Y = 371,100.67; thence North 89 degrees 59 minutes 14 seconds West 532.96 feet being the North boundary of said State Lease No. 13470 to its Northwest corner also being the Northeast corner of State Lease No. 8091 having Coordinates of X = 1,904,976.04 and Y = 371,100.79, thence along the boundary of said State Lease No. 8091 the following courses: West 3208.06 feet and South 08 degrees 31 minutes 46 seconds East 2,528.76 feet to its Southwest corner also being the Northwest corner of State Lease No. 9410, as amended, having Coordinates of X = 1,902,143.04 and Y = 368,600.00; thence South 08 degrees 31 minutes 46 seconds East 1,493.01 feet along the West boundary of said State Lease No. 9410 to a point having Coordinates of X = 1,902,364.48 and Y = 367,123.50; thence West 3,473.48 feet to a point having Coordinates of X = 1,898,891.00 and Y = 367,123.50; thence North 4,030.50 feet to a point having Coordinates of X = 1,898,891.00 and Y = 371,154.00; thence West 1,306.00 feet to a point having Coordinates of X = 1,897,585.00 and Y = 371,154.00; thence North 8,037.00 feet to the point of beginning, containing approximately **1,760.01 acres**, all as more particularly outlined on a plat on file in the Office of Mineral Resources, Department of Natural Resources. All bearings, distances and coordinates are based on Louisiana Coordinate System of 1927, (North or South Zone), where applicable.

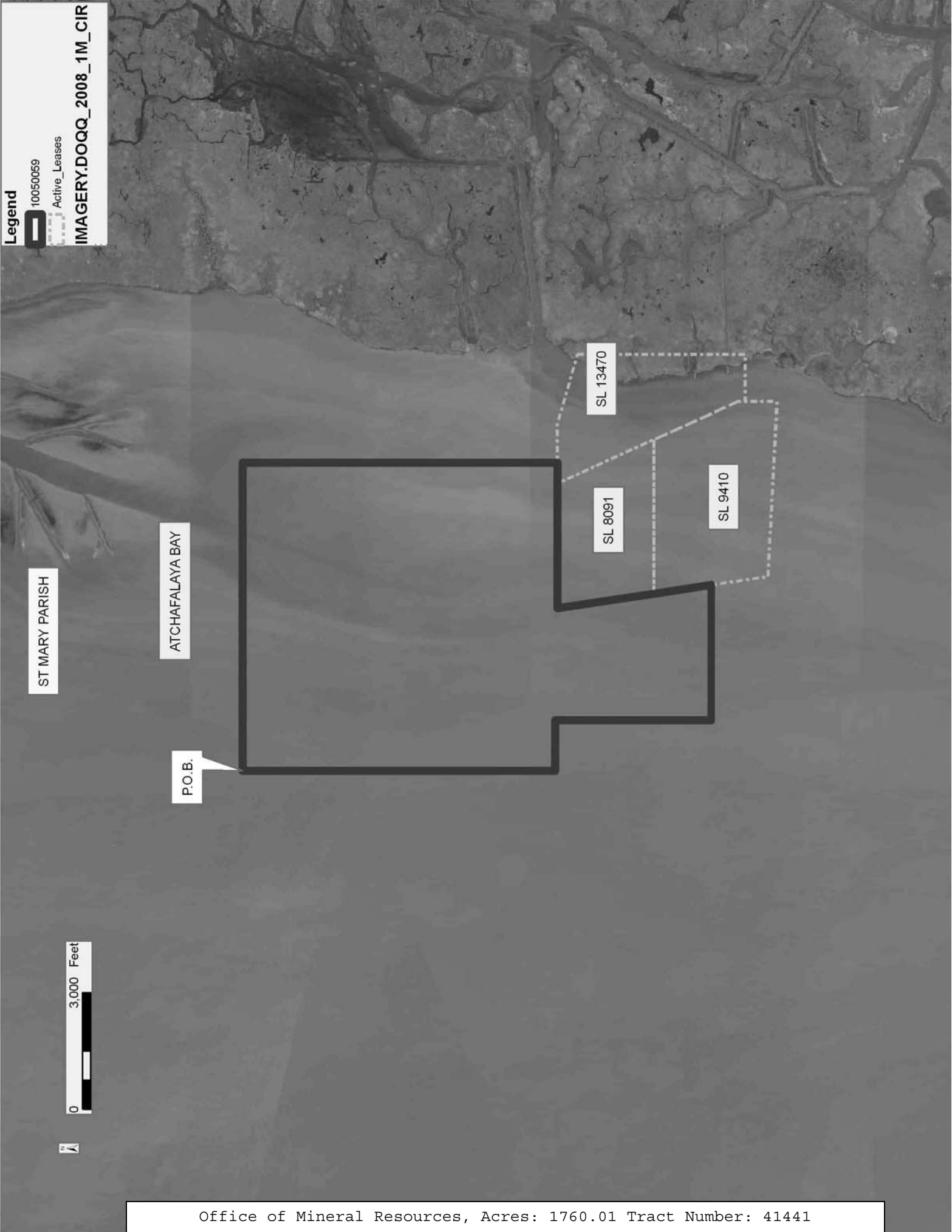
NOTE: The above description of the Tract nominated for lease has been provided and corrected, where required, exclusively by the nomination party. Any mineral lease selected from this Tract and awarded by the Louisiana State Mineral Board shall be without warranty of any kind, either express, implied, or statutory, including, but not limited to, the implied warranties of merchantability and fitness for a particular purpose. Should the mineral lease awarded by the Louisiana State Mineral Board be subsequently modified, cancelled or abrogated due to the existence of conflicting leases, operating agreements, private claims or other future obligations or conditions which may affect all or any portion of the leased Tract, it shall not relieve the Lessee of the obligation to pay any bonus due thereon to the Louisiana State Mineral Board, nor shall the Louisiana State Mineral Board be obligated to refund any consideration paid by the Lessor prior to such modification, cancellation, or abrogation, including, but not limited to, bonuses, rentals and royalties.

NOTE: The State of Louisiana does hereby reserve, and this lease shall be subject to, the imprescriptible right of surface use in the nature of a servitude in favor of the Department of Natural Resources, including its Offices and Commissions, for the sole purpose of implementing, constructing, servicing and maintaining approved coastal zone management and/or restoration projects. Utilization of any and all rights derived under this lease by the mineral lessee, its agents, successors or assigns, shall not interfere with nor hinder the reasonable surface use by the Department of Natural Resources, its Offices or Commissions, as herein above reserved.

NOTE: The Department of Wildlife and Fisheries has designated certain areas in the coastal waters of the State of Louisiana as Oyster Seed Bed Areas. The exact location of those Seed Bed Areas must be obtained from the Department of Wildlife and Fisheries and any work done under a mineral lease from the State of Louisiana may necessarily be conducted in conformity with the rules and regulations promulgated by the said Department of Wildlife and Fisheries for Oyster Seed Bed Areas.

Applicant: PATRICK L. DONOHUE PETROLEUM PROPERTIES, INC.

Bidder	Cash Payment	Price/ Acre	Rental	Oil	Gas	Other



TRACT 41442 - St. Mary Parish, Louisiana

All of the lands now or formerly constituting the beds and bottoms of all water bodies of every nature and description the title of which vests in the State of Louisiana, together with all islands arising therein and other lands formed by accretion or by reliction, where allowed by law, excepting tax adjudicated lands, and not presently under mineral lease on May 12, 2010, situated in St. Mary Parish, Louisiana, and more particularly described as follows: Beginning at a point having Coordinates of X = 1,905,509.00 and Y = 379,191.00; thence East 7,924.00 feet to a point having Coordinates of X = 1,913,433.00 and Y = 379,191.00; thence South 8,037.00 feet to a point having Coordinates of X = 1,913,433.00 and Y = 371,154.00; thence West 1,306.00 feet to a point having Coordinates of X = 1,912,127.00 and Y = 371,154.00; thence South 4,030.50 feet to a point having Coordinates of X = 1,912,127.00 and Y = 367,123.50; thence West 3,829.00 feet to a point on the East boundary of State Lease No. 13470 having Coordinates of X = 1,908,298.00 and Y = 367,123.50; thence along the boundary of said State Lease No. 13470 the following courses: North 3,459.09 feet, North 73 degrees 52 minutes 35 seconds West 1,864.90 feet and North 89 degrees 59 minutes 14 seconds West 997.46 feet to a point having Coordinates of X = 1,905,509.00 and Y = 371,100.67, thence North 8090.33 feet to the point of beginning, containing approximately **596 acres**, all as more particularly outlined on a plat on file in the Office of Mineral Resources, Department of Natural Resources. All bearings, distances and coordinates are based on Louisiana Coordinate System of 1927, (North or South Zone), where applicable.

NOTE: The above description of the Tract nominated for lease has been provided and corrected, where required, exclusively by the nomination party. Any mineral lease selected from this Tract and awarded by the Louisiana State Mineral Board shall be without warranty of any kind, either express, implied, or statutory, including, but not limited to, the implied warranties of merchantability and fitness for a particular purpose. Should the mineral lease awarded by the Louisiana State Mineral Board be subsequently modified, cancelled or abrogated due to the existence of conflicting leases, operating agreements, private claims or other future obligations or conditions which may affect all or any portion of the leased Tract, it shall not relieve the Lessee of the obligation to pay any bonus due thereon to the Louisiana State Mineral Board, nor shall the Louisiana State Mineral Board be obligated to refund any consideration paid by the Lessor prior to such modification, cancellation, or abrogation, including, but not limited to, bonuses, rentals and royalties.

NOTE: The State of Louisiana does hereby reserve, and this lease shall be subject to, the imprescriptible right of surface use in the nature of a servitude in favor of the Department of Natural Resources, including its Offices and Commissions, for the sole purpose of implementing, constructing, servicing and maintaining approved coastal zone management and/or restoration projects. Utilization of any and all rights derived under this lease by the mineral lessee, its agents, successors or assigns,

shall not interfere with nor hinder the reasonable surface use by the Department of Natural Resources, its Offices or Commissions, as herein above reserved.

NOTE: The Department of Wildlife and Fisheries has designated certain areas in the coastal waters of the State of Louisiana as Oyster Seed Bed Areas. The exact location of those Seed Bed Areas must be obtained from the Department of Wildlife and Fisheries and any work done under a mineral lease from the State of Louisiana may necessarily be conducted in conformity with the rules and regulations promulgated by the said Department of Wildlife and Fisheries for Oyster Seed Bed Areas.

Applicant: PATRICK L. DONOHUE PETROLEUM PROPERTIES, INC.

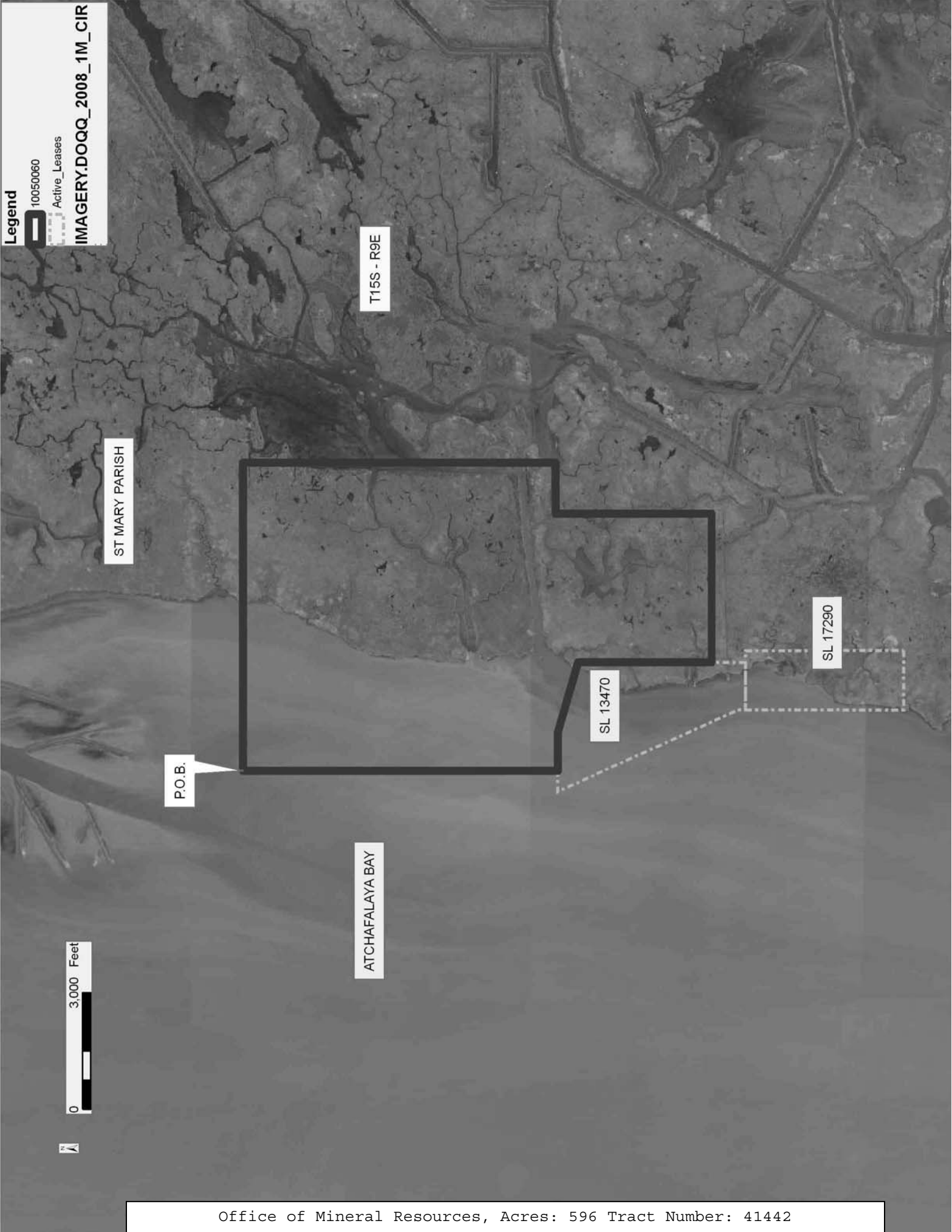
Bidder	Cash Payment	Price/ Acre	Rental	Oil	Gas	Other

Legend

10050060

Active Leases

IMAGERY.DOQQ_2008_1M_CIR



TRACT 41443 - St. Mary Parish, Louisiana

All of the lands now or formerly constituting the beds and bottoms of all water bodies of every nature and description the title of which vests in the State of Louisiana, together with all islands arising therein and other lands formed by accretion or by reliction, where allowed by law, excepting tax adjudicated lands, and not presently under mineral lease on May 12, 2010, situated in St. Mary Parish, Louisiana, and more particularly described as follows: Beginning at a point having Coordinates of X = 1,893,585.00 and Y = 379,191.00; thence East 4,000.00 feet to a point having Coordinates of X = 1,897,585.00 and Y = 379,191.00; thence South 8,037.00 feet to a point having Coordinates of X = 1,897,585.00 and Y = 371,154.00; thence East 1,306.00 feet to a point having Coordinates of X = 1,898,891.00 and Y = 371,154.00; thence South 4,030.50 feet to a point having Coordinates of X = 1,898,891.00 and Y = 367,123.50; thence West 9,230.00 feet to a point having Coordinates of X = 1,889,661.00 and Y = 367,123.50; thence North 4,030.50 feet to a point having Coordinates of X = 1,889,661.00 and Y = 371,154.00; thence East 3,924.00 feet to a point having Coordinates of X = 1,893,585.00 and Y = 371,154.00; thence North 8,037.00 feet to the point of beginning, containing approximately **1,592.05 acres**, all as more particularly outlined on a plat on file in the Office of Mineral Resources, Department of Natural Resources. All bearings, distances and coordinates are based on Louisiana Coordinate System of 1927, (North or South Zone), where applicable.

NOTE: The above description of the Tract nominated for lease has been provided and corrected, where required, exclusively by the nomination party. Any mineral lease selected from this Tract and awarded by the Louisiana State Mineral Board shall be without warranty of any kind, either express, implied, or statutory, including, but not limited to, the implied warranties of merchantability and fitness for a particular purpose. Should the mineral lease awarded by the Louisiana State Mineral Board be subsequently modified, cancelled or abrogated due to the existence of conflicting leases, operating agreements, private claims or other future obligations or conditions which may affect all or any portion of the leased Tract, it shall not relieve the Lessee of the obligation to pay any bonus due thereon to the Louisiana State Mineral Board, nor shall the Louisiana State Mineral Board be obligated to refund any consideration paid by the Lessor prior to such modification, cancellation, or abrogation, including, but not limited to, bonuses, rentals and royalties.

NOTE: The State of Louisiana does hereby reserve, and this lease shall be subject to, the imprescriptible right of surface use in the nature of a servitude in favor of the Department of Natural Resources, including its Offices and Commissions, for the sole purpose of implementing, constructing, servicing and maintaining approved coastal zone management and/or restoration projects. Utilization of any and all rights derived under this lease by the mineral lessee, its agents, successors or assigns, shall not interfere with nor hinder the reasonable surface use by the

Department of Natural Resources, its Offices or Commissions, as herein above reserved.

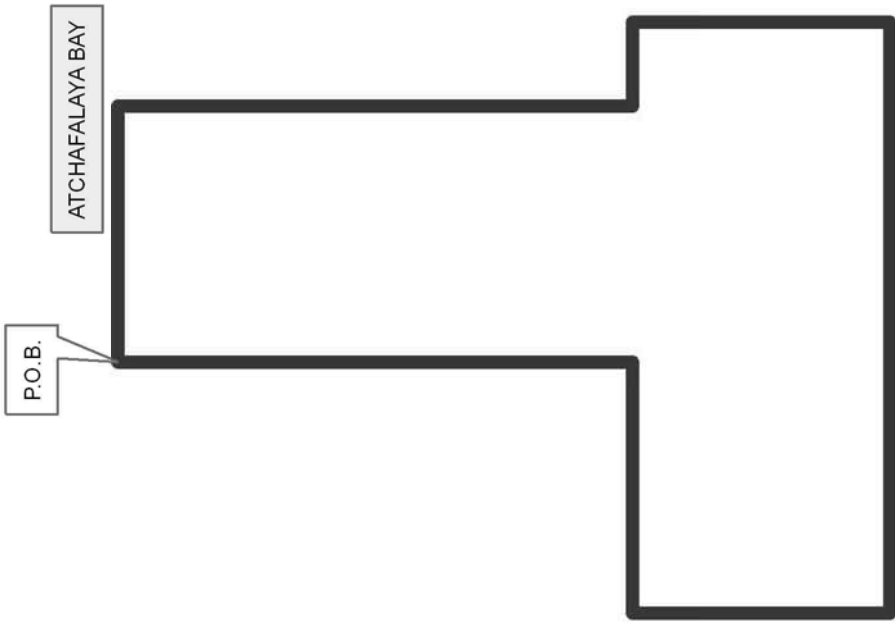
NOTE: The Department of Wildlife and Fisheries has designated certain areas in the coastal waters of the State of Louisiana as Oyster Seed Bed Areas. The exact location of those Seed Bed Areas must be obtained from the Department of Wildlife and Fisheries and any work done under a mineral lease from the State of Louisiana may necessarily be conducted in conformity with the rules and regulations promulgated by the said Department of Wildlife and Fisheries for Oyster Seed Bed Areas.

Applicant: PATRICK L. DONOHUE PETROLEUM PROPERTIES, INC.

Bidder	Cash Payment	Price/ Acre	Rental	Oil	Gas	Other



ST MARY PARISH



TRACT 41444 - Vermilion Parish, Louisiana

All of the lands now or formerly constituting the beds and bottoms of all water bodies of every nature and description the title of which vests in the State of Louisiana, together with all islands arising therein and other lands formed by accretion or by reliction, where allowed by law, excepting tax adjudicated lands, and not presently under mineral lease on May 12, 2010, situated in Vermilion Parish, Louisiana, and more particularly described as follows: Beginning at a point having Coordinates of X = 1,760,301.07 and Y = 379,098.00; thence East 5,806.53 feet to a point having Coordinates of X = 1,766,107.60 and Y = 379,098.00; thence South 4,340.31 feet to a Northwest corner of State Lease No. 4011, as amended, having Coordinates of X = 1,766,107.60 and Y = 374,757.69; thence along the boundary of said State Lease No. 4011 the following courses: South 5,943.84 feet to a corner having Coordinates of X = 1,766,107.60 and Y = 368,813.85 and West 5,806.53 feet to its Southernmost Northwest corner having Coordinates of X = 1,760,301.07 and Y = 368,813.85; thence North 10,284.15 feet to the point of beginning, containing approximately **1,370.87 acres**, all as more particularly outlined on a plat on file in the Office of Mineral Resources, Department of Natural Resources. All bearings, distances and coordinates are based on Louisiana Coordinate System of 1927, (North or South Zone), where applicable.

NOTE: The above description of the Tract nominated for lease has been provided and corrected, where required, exclusively by the nomination party. Any mineral lease selected from this Tract and awarded by the Louisiana State Mineral Board shall be without warranty of any kind, either express, implied, or statutory, including, but not limited to, the implied warranties of merchantability and fitness for a particular purpose. Should the mineral lease awarded by the Louisiana State Mineral Board be subsequently modified, cancelled or abrogated due to the existence of conflicting leases, operating agreements, private claims or other future obligations or conditions which may affect all or any portion of the leased Tract, it shall not relieve the Lessee of the obligation to pay any bonus due thereon to the Louisiana State Mineral Board, nor shall the Louisiana State Mineral Board be obligated to refund any consideration paid by the Lessor prior to such modification, cancellation, or abrogation, including, but not limited to, bonuses, rentals and royalties.

NOTE: The State of Louisiana does hereby reserve, and this lease shall be subject to, the imprescriptible right of surface use in the nature of a servitude in favor of the Department of Natural Resources, including its Offices and Commissions, for the sole purpose of implementing, constructing, servicing and maintaining approved coastal zone management and/or restoration projects. Utilization of any and all rights derived under this lease by the mineral lessee, its agents, successors or assigns, shall not interfere with nor hinder the reasonable surface use by the Department of Natural Resources, its Offices or Commissions, as herein above reserved.

NOTE: The Department of Wildlife and Fisheries has designated certain areas in the coastal waters of the State of Louisiana as Oyster Seed Bed Areas. The exact location of those Seed Bed Areas must be obtained from the Department of Wildlife and Fisheries and any work done under a mineral lease from the State of Louisiana may necessarily be conducted in conformity with the rules and regulations promulgated by the said Department of Wildlife and Fisheries for Oyster Seed Bed Areas.

Applicant: THEOPHILUS OIL, GAS & LAND SERVICES, LLC

Bidder	Cash Payment	Price/ Acre	Rental	Oil	Gas	Other

Legend

10050050

Active Leases



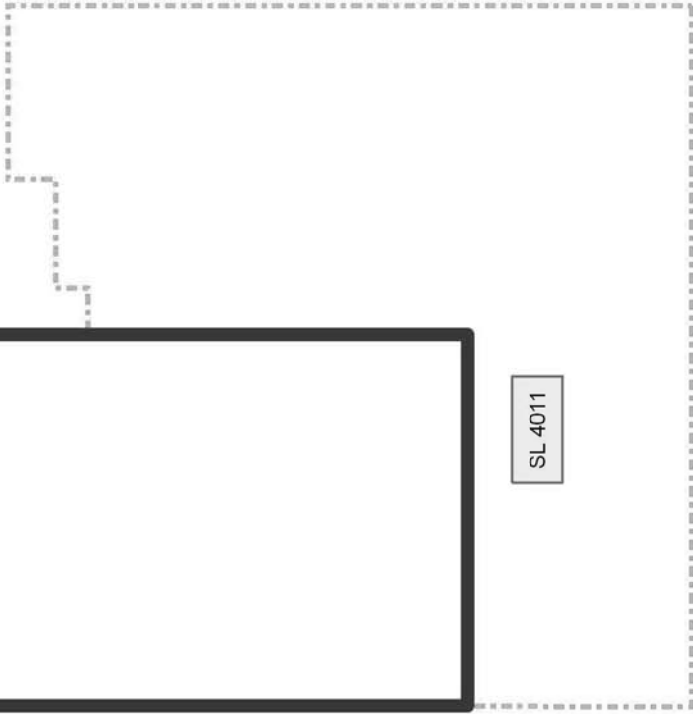
VERMILION PARISH

VERMILION BAY

P.O.B.



SL 4011



TRACT 41445 - Vermilion Parish, Louisiana

All of the lands now or formerly constituting the beds and bottoms of all water bodies of every nature and description the title of which vests in the State of Louisiana, together with all islands arising therein and other lands formed by accretion or by reliction, where allowed by law, excepting tax adjudicated lands, and not presently under mineral lease on May 12, 2010, situated in Vermilion Parish, Louisiana, and more particularly described as follows: Beginning at a Northwest corner of State Lease No. 4011, as amended, having Coordinates of X = 1,766,107.60 and Y = 374,757.69; thence North 4,340.31 feet to a point having Coordinates of X = 1,766,107.60 and Y = 379,098.00; thence East 12,547.40 feet to a point having Coordinates of X = 1,778,655.00 and Y = 379,098.00; thence South 2,973.00 feet to the Northeast corner of State Lease No. 3306, as amended, having Coordinates of X = 1,778,655.00 and Y = 376,125.00; thence along the boundary of said State Lease No. 3306 the following courses: North 88 degrees 29 minutes 57 seconds West 1,145.39 feet to a corner having Coordinates of X = 1,777,510.00 and Y = 376,155.00 and North 83 degrees 06 minutes 36 seconds West 848.38 feet to the Easternmost corner of State Lease No. 17751, as amended, having Coordinates of X = 1,776,667.74 and Y = 376,256.78; thence along the boundary of said State Lease No. 17751 the following courses: North 83 degrees 06 minutes 41 seconds West 360.34 feet to a corner having Coordinates of X = 1,776,310.00 and Y = 376,300.00; North 84 degrees 22 minutes 57 seconds West 1,225.89 feet to a corner having Coordinates of X = 1,775,090.00 and Y = 376,420.00; North 82 degrees 08 minutes 27 seconds West 1,645.46 feet to a corner having Coordinates of X = 1,773,460.00 and Y = 376,645.00 and South 40 degrees 00 minutes 49 seconds West 504.83 feet to a corner located on the North boundary of said State Lease No. 3306 having Coordinates of X = 1,773,135.40 and Y = 376,258.35; thence along the boundary of said State Lease No. 3306 the following courses: North 89 degrees 58 minutes 28 seconds West 1,893.58 feet to a corner having Coordinates of X = 1,771,241.82 and Y = 376,259.20 and South 275.00 feet to the Northeast corner of said State Lease No. 4011 having Coordinates of X = 1,771,241.82 and Y = 375,984.20; thence along the boundary of said State Lease No. 4011 the following courses: West 2,710.50 feet to a corner having Coordinates of X = 1,768,531.32 and Y = 375,984.20; South 725.00 feet to a corner having Coordinates of X = 1,768,531.32 and Y = 375,259.20; West 1,700.00 feet to a corner having Coordinates of X = 1,766,831.32 and Y = 375,259.20; South 00 degrees 13 minutes 30 seconds West 501.51 feet to a corner having Coordinates of X = 1,766,829.35 and Y = 374,757.69 and West 721.75 feet to the point of beginning, containing approximately **888.33 acres**, all as more particularly outlined on a plat on file in the Office of Mineral Resources, Department of Natural Resources. All bearings, distances and coordinates are based on Louisiana Coordinate System of 1927, (North or South Zone), where applicable.

NOTE: The above description of the Tract nominated for lease has been provided and corrected, where required, exclusively by the nomination party. Any mineral lease selected from this Tract and awarded by the

Louisiana State Mineral Board shall be without warranty of any kind, either express, implied, or statutory, including, but not limited to, the implied warranties of merchantability and fitness for a particular purpose. Should the mineral lease awarded by the Louisiana State Mineral Board be subsequently modified, cancelled or abrogated due to the existence of conflicting leases, operating agreements, private claims or other future obligations or conditions which may affect all or any portion of the leased Tract, it shall not relieve the Lessee of the obligation to pay any bonus due thereon to the Louisiana State Mineral Board, nor shall the Louisiana State Mineral Board be obligated to refund any consideration paid by the Lessor prior to such modification, cancellation, or abrogation, including, but not limited to, bonuses, rentals and royalties.

NOTE: The State of Louisiana does hereby reserve, and this lease shall be subject to, the imprescriptible right of surface use in the nature of a servitude in favor of the Department of Natural Resources, including its Offices and Commissions, for the sole purpose of implementing, constructing, servicing and maintaining approved coastal zone management and/or restoration projects. Utilization of any and all rights derived under this lease by the mineral lessee, its agents, successors or assigns, shall not interfere with nor hinder the reasonable surface use by the Department of Natural Resources, its Offices or Commissions, as herein above reserved.

NOTE: The Department of Wildlife and Fisheries has designated certain areas in the coastal waters of the State of Louisiana as Oyster Seed Bed Areas. The exact location of those Seed Bed Areas must be obtained from the Department of Wildlife and Fisheries and any work done under a mineral lease from the State of Louisiana may necessarily be conducted in conformity with the rules and regulations promulgated by the said Department of Wildlife and Fisheries for Oyster Seed Bed Areas.

Applicant: THEOPHILUS OIL, GAS & LAND SERVICES, LLC

Bidder	Cash Payment	Price/ Acre	Rental	Oil	Gas	Other

Legend

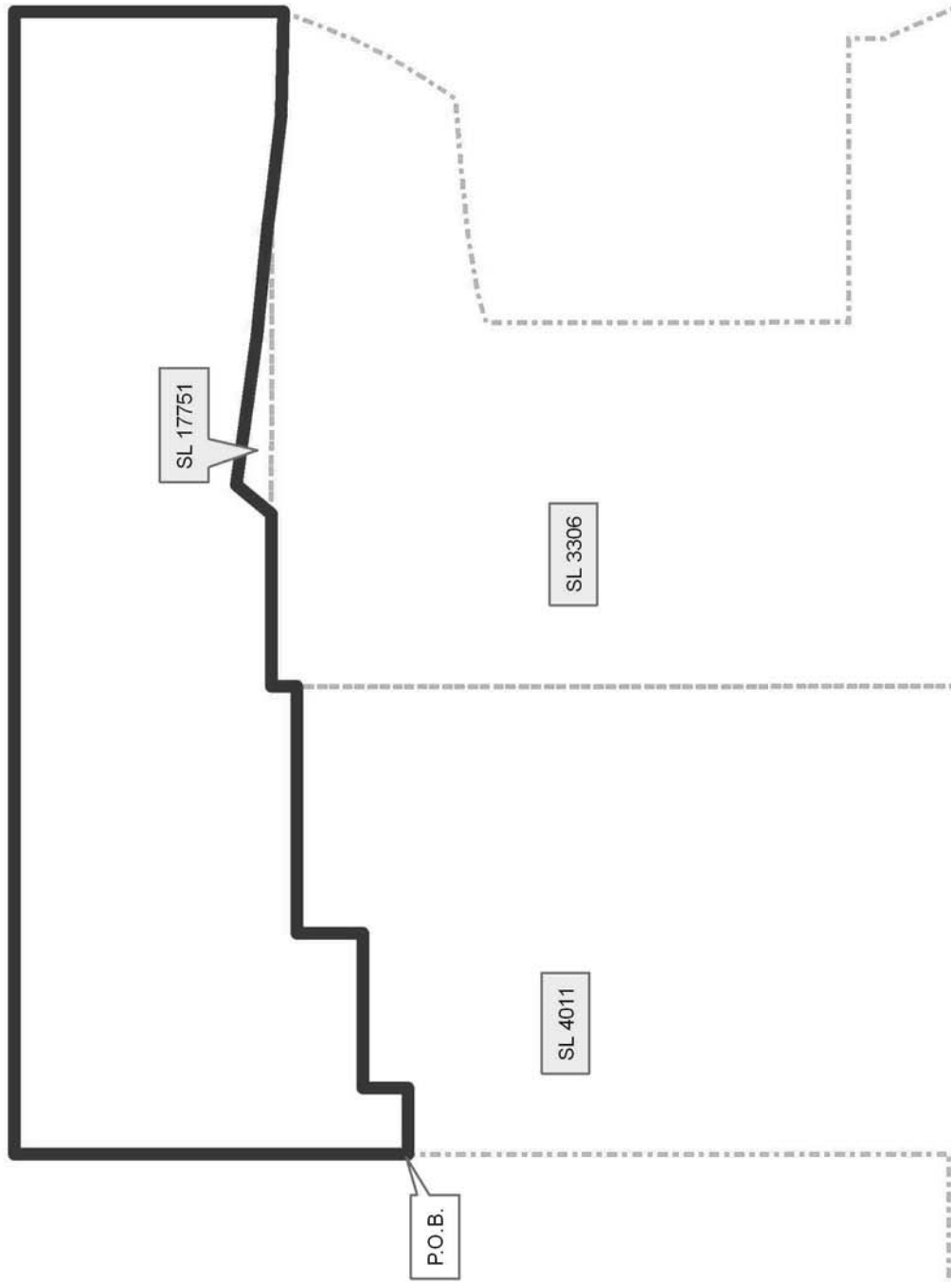
10050051

Active_Leases



VERMILION PARISH

VERMILION BAY



TRACT 41446 - Vermilion Parish, Louisiana

All of the lands now or formerly constituting the beds and bottoms of all water bodies of every nature and description the title of which vests in the State of Louisiana, together with all islands arising therein and other lands formed by accretion or by reliction, where allowed by law, excepting tax adjudicated lands, and not presently under mineral lease on May 12, 2010, situated in Vermilion Parish, Louisiana, and more particularly described as follows: Beginning at a point having Coordinates of X = 1,778,655.00 and Y = 379,098.00; thence East 6,145.00 feet to a point having Coordinates of X = 1,784,800.00 and Y = 379,098.00; thence South 13,784.15 feet to a point having Coordinates of X = 1,784,800.00 and Y = 365,313.85; thence West 5,813.28 feet to the Southeast corner of State Lease No. 3306, as amended, having Coordinates of X = 1,778,986.72 and Y = 365,313.85; thence along the boundary of said State Lease No. 3306 the following courses: North 2,764.80 feet to a corner having Coordinates of X = 1,778,986.72 and Y = 368,078.65; North 23 degrees 30 minutes 10 seconds West 1,570.81 feet to a corner having Coordinates of X = 1,778,360.29 and Y = 369,519.15; North 388.15 feet to a corner having Coordinates of X = 1,778,360.29 and Y = 369,907.30; West 3,118.49 feet to a corner having Coordinates of X = 1,775,241.80 and Y = 369,907.30; North 3,989.16 feet to a corner having Coordinates of X = 1,775,241.80 and Y = 373,896.46; North 74 degrees 27 minutes 01 seconds East 330.28 feet to a corner having Coordinates of X = 1,775,559.99 and Y = 373,985.00; North 80 degrees 14 minutes 51 seconds East 649.38 feet to a corner having Coordinates of X = 1,776,199.99 and Y = 374,095.00; North 84 degrees 19 minutes 47 seconds East 708.47 feet to a corner having Coordinates of X = 1,776,904.99 and Y = 374,165.00; North 84 degrees 59 minutes 58 seconds East 803.07 feet to a corner having Coordinates of X = 1,777,705.00 and Y = 374,235.00; North 33 degrees 10 minutes 43 seconds East 465.97 feet to a corner having Coordinates of X = 1,777,960.00 and Y = 374,625.00; North 30 degrees 12 minutes 12 seconds East 387.62 feet to a corner having Coordinates of X = 1,778,155.00 and Y = 374,960.00; North 26 degrees 16 minutes 27 seconds East 440.51 feet to a corner having Coordinates of X = 1,778,350.00 and Y = 375,355.00 and North 21 degrees 36 minutes 31 seconds East 828.21 feet to its Northeast corner having Coordinates of X = 1,778,655.00 and Y = 376,125.00; thence North 2,973.00 feet to the point of beginning, containing approximately **2,275.54 acres**, all as more particularly outlined on a plat on file in the Office of Mineral Resources, Department of Natural Resources. All bearings, distances and coordinates are based on Louisiana Coordinate System of 1927, (North or South Zone), where applicable.

NOTE: The above description of the Tract nominated for lease has been provided and corrected, where required, exclusively by the nomination party. Any mineral lease selected from this Tract and awarded by the Louisiana State Mineral Board shall be without warranty of any kind, either express, implied, or statutory, including, but not limited to, the implied warranties of merchantability and fitness for a particular purpose. Should the mineral lease awarded by the Louisiana State Mineral

Board be subsequently modified, cancelled or abrogated due to the existence of conflicting leases, operating agreements, private claims or other future obligations or conditions which may affect all or any portion of the leased Tract, it shall not relieve the Lessee of the obligation to pay any bonus due thereon to the Louisiana State Mineral Board, nor shall the Louisiana State Mineral Board be obligated to refund any consideration paid by the Lessor prior to such modification, cancellation, or abrogation, including, but not limited to, bonuses, rentals and royalties.

NOTE: The State of Louisiana does hereby reserve, and this lease shall be subject to, the imprescriptible right of surface use in the nature of a servitude in favor of the Department of Natural Resources, including its Offices and Commissions, for the sole purpose of implementing, constructing, servicing and maintaining approved coastal zone management and/or restoration projects. Utilization of any and all rights derived under this lease by the mineral lessee, its agents, successors or assigns, shall not interfere with nor hinder the reasonable surface use by the Department of Natural Resources, its Offices or Commissions, as herein above reserved.

NOTE: The Department of Wildlife and Fisheries has designated certain areas in the coastal waters of the State of Louisiana as Oyster Seed Bed Areas. The exact location of those Seed Bed Areas must be obtained from the Department of Wildlife and Fisheries and any work done under a mineral lease from the State of Louisiana may necessarily be conducted in conformity with the rules and regulations promulgated by the said Department of Wildlife and Fisheries for Oyster Seed Bed Areas.

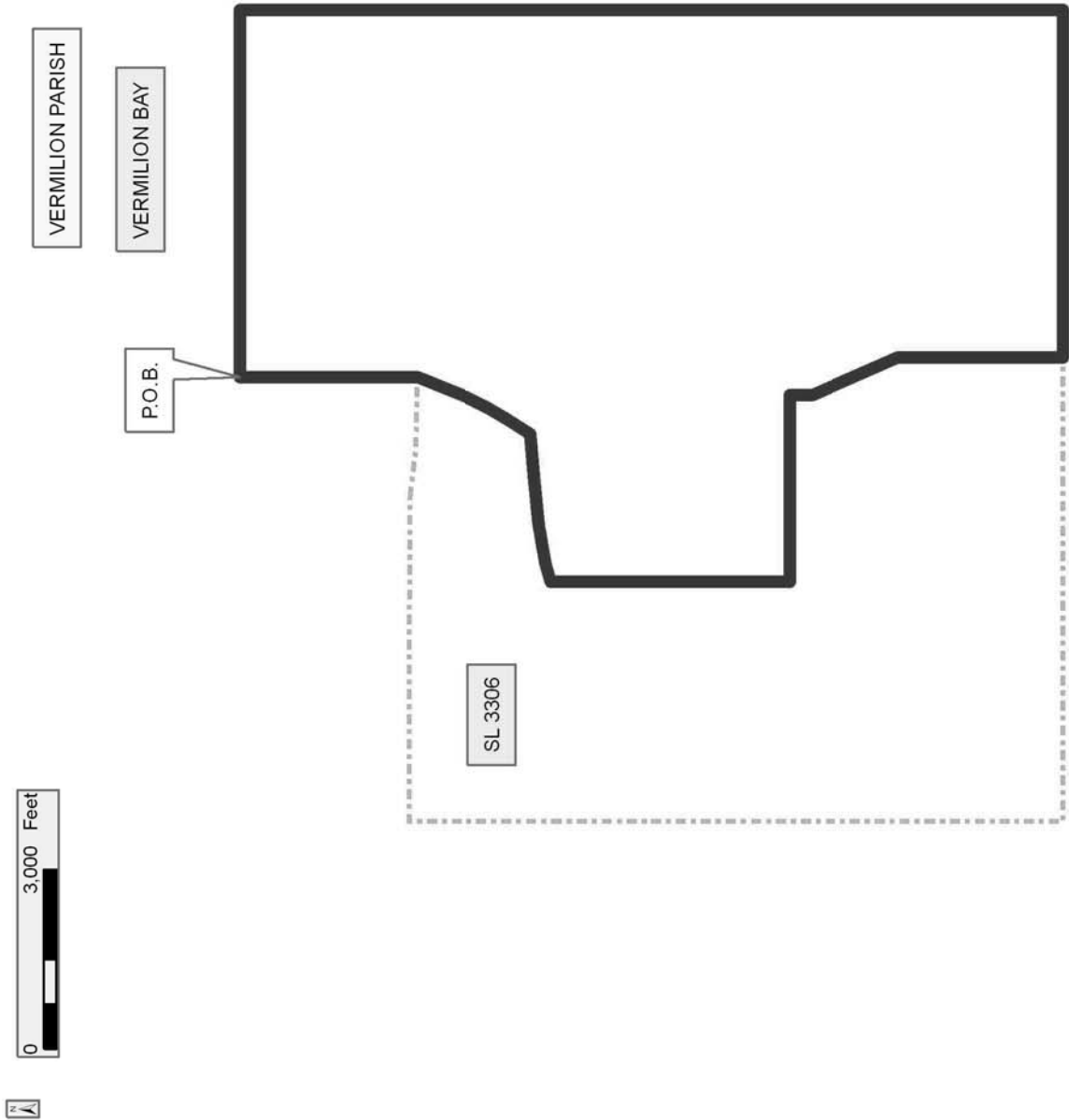
Applicant: THEOPHILUS OIL, GAS & LAND SERVICES, LLC

Bidder	Cash Payment	Price/ Acre	Rental	Oil	Gas	Other

Legend

10050052

Active Leases



TRACT 41447 - St. Mary Parish, Louisiana

All of the lands now or formerly constituting the beds and bottoms of all water bodies of every nature and description the title of which vests in the State of Louisiana, together with all islands arising therein and other lands formed by accretion or by reliction, where allowed by law, excepting tax adjudicated lands, and not presently under mineral lease on May 12, 2010, situated in St. Mary Parish, Louisiana, and more particularly described as follows: Beginning at a point having Coordinates of X = 1,912,127.00 and Y = 371,154.00; thence East 8,083.00 feet to a point having Coordinates of X = 1,920,210.00 and Y = 371,154.00; thence South 16,098.00 feet to a point having Coordinates of X = 1,920,210.00 and Y = 355,056.00; thence West 9,429.00 feet to a point having Coordinates of X = 1,910,781.00 and Y = 355,056.00; thence North 5,370.00 feet to a point having Coordinates of X = 1,910,781.00 and Y = 360,426.00; thence East 1,346.00 feet to a point having Coordinates of X = 1,912,127.00 and Y = 360,426.00; thence North 10,728.00 feet to the point of beginning, containing approximately **250 acres**, all as more particularly outlined on a plat on file in the Office of Mineral Resources, Department of Natural Resources. All bearings, distances and coordinates are based on Louisiana Coordinate System of 1927, (North or South Zone), where applicable.

NOTE: The above description of the Tract nominated for lease has been provided and corrected, where required, exclusively by the nomination party. Any mineral lease selected from this Tract and awarded by the Louisiana State Mineral Board shall be without warranty of any kind, either express, implied, or statutory, including, but not limited to, the implied warranties of merchantability and fitness for a particular purpose. Should the mineral lease awarded by the Louisiana State Mineral Board be subsequently modified, cancelled or abrogated due to the existence of conflicting leases, operating agreements, private claims or other future obligations or conditions which may affect all or any portion of the leased Tract, it shall not relieve the Lessee of the obligation to pay any bonus due thereon to the Louisiana State Mineral Board, nor shall the Louisiana State Mineral Board be obligated to refund any consideration paid by the Lessor prior to such modification, cancellation, or abrogation, including, but not limited to, bonuses, rentals and royalties.

NOTE: The State of Louisiana does hereby reserve, and this lease shall be subject to, the imprescriptible right of surface use in the nature of a servitude in favor of the Department of Natural Resources, including its Offices and Commissions, for the sole purpose of implementing, constructing, servicing and maintaining approved coastal zone management and/or restoration projects. Utilization of any and all rights derived under this lease by the mineral lessee, its agents, successors or assigns, shall not interfere with nor hinder the reasonable surface use by the Department of Natural Resources, its Offices or Commissions, as herein above reserved.

Applicant: PATRICK L. DONOHUE PETROLEUM PROPERTIES, INC.

Bidder	Cash Payment	Price/ Acre	Rental	Oil	Gas	Other

0 4,000 Feet



ST MARY PARISH

T15S - R9E

P.O.B.

T16S - R9E

BAYOU LONG

BAYOU CARLIN

TRACT 41448 - St. Mary Parish, Louisiana

All of the lands now or formerly constituting the beds and bottoms of all water bodies of every nature and description the title of which vests in the State of Louisiana, together with all islands arising therein and other lands formed by accretion or by reliction, where allowed by law, excepting tax adjudicated lands, and not presently under mineral lease on May 12, 2010, situated in St. Mary Parish, Louisiana, and more particularly described as follows: Beginning at a point having Coordinates of X = 1,889,661.00 and Y = 367,123.50; thence East 9,230.00 feet to a point having Coordinates of X = 1,898,891.00 and Y = 367,123.50; thence South 12,067.50 feet to a point having Coordinates of X = 1,898,891.00 and Y = 355,056.00; thence West 5,230.00 feet to a point having Coordinates of X = 1,893,661.00 and Y = 355,056.00; thence North 5,370.00 feet to a point having Coordinates of X = 1,893,661.00 and Y = 360,426.00; thence West 4,000.00 feet to a point having Coordinates of X = 1,889,661.00 and Y = 360,426.00; thence North 6,697.50 feet to the point of beginning, containing approximately **2,063.89 acres**, all as more particularly outlined on a plat on file in the Office of Mineral Resources, Department of Natural Resources. All bearings, distances and coordinates are based on Louisiana Coordinate System of 1927, (North or South Zone), where applicable.

NOTE: The above description of the Tract nominated for lease has been provided and corrected, where required, exclusively by the nomination party. Any mineral lease selected from this Tract and awarded by the Louisiana State Mineral Board shall be without warranty of any kind, either express, implied, or statutory, including, but not limited to, the implied warranties of merchantability and fitness for a particular purpose. Should the mineral lease awarded by the Louisiana State Mineral Board be subsequently modified, cancelled or abrogated due to the existence of conflicting leases, operating agreements, private claims or other future obligations or conditions which may affect all or any portion of the leased Tract, it shall not relieve the Lessee of the obligation to pay any bonus due thereon to the Louisiana State Mineral Board, nor shall the Louisiana State Mineral Board be obligated to refund any consideration paid by the Lessor prior to such modification, cancellation, or abrogation, including, but not limited to, bonuses, rentals and royalties.

NOTE: The State of Louisiana does hereby reserve, and this lease shall be subject to, the imprescriptible right of surface use in the nature of a servitude in favor of the Department of Natural Resources, including its Offices and Commissions, for the sole purpose of implementing, constructing, servicing and maintaining approved coastal zone management and/or restoration projects. Utilization of any and all rights derived under this lease by the mineral lessee, its agents, successors or assigns, shall not interfere with nor hinder the reasonable surface use by the Department of Natural Resources, its Offices or Commissions, as herein above reserved.

NOTE: The Department of Wildlife and Fisheries has designated certain areas in the coastal waters of the State of Louisiana as Oyster Seed Bed Areas. The exact location of those Seed Bed Areas must be obtained from the Department of Wildlife and Fisheries and any work done under a mineral lease from the State of Louisiana may necessarily be conducted in conformity with the rules and regulations promulgated by the said Department of Wildlife and Fisheries for Oyster Seed Bed Areas.

Applicant: PATRICK L. DONOHUE PETROLEUM PROPERTIES, INC.

Bidder	Cash Payment	Price/ Acre	Rental	Oil	Gas	Other

ST MARY PARISH

ATCHAFALAYA BAY

P.O.B.



TRACT 41449 - St. Mary Parish, Louisiana

All of the lands now or formerly constituting the beds and bottoms of all water bodies of every nature and description the title of which vests in the State of Louisiana, together with all islands arising therein and other lands formed by accretion or by reliction, where allowed by law, excepting tax adjudicated lands, and not presently under mineral lease on May 12, 2010, situated in St. Mary Parish, Louisiana, and more particularly described as follows: Beginning at a point having Coordinates of X = 1,898,891.00 and Y = 367,123.50; thence East 3,473.48 feet to a point on the West boundary of State Lease No. 9410, as amended, having Coordinates of X = 1,902,364.48 and Y = 367,123.50; thence along the boundary of said State Lease No. 9410 the following courses: South 08 degrees 31 minutes 46 seconds East 1,475.26 feet and South 87 degrees 05 minutes 15 seconds East 2,929.49 feet to a point on its South boundary having Coordinates of X = 1,905,509.00 and Y = 365,515.71; thence South 10,459.71 feet to a point having Coordinates of X = 1,905,509.00 and Y = 355,056.00; thence West 6,618.00 feet to a point having Coordinates of X = 1,898,891.00 and Y = 355,056.00; thence North 12,067.50 feet to the point of beginning, containing approximately **1,646 acres**, all as more particularly outlined on a plat on file in the Office of Mineral Resources, Department of Natural Resources. All bearings, distances and coordinates are based on Louisiana Coordinate System of 1927, (North or South Zone), where applicable.

NOTE: The above description of the Tract nominated for lease has been provided and corrected, where required, exclusively by the nomination party. Any mineral lease selected from this Tract and awarded by the Louisiana State Mineral Board shall be without warranty of any kind, either express, implied, or statutory, including, but not limited to, the implied warranties of merchantability and fitness for a particular purpose. Should the mineral lease awarded by the Louisiana State Mineral Board be subsequently modified, cancelled or abrogated due to the existence of conflicting leases, operating agreements, private claims or other future obligations or conditions which may affect all or any portion of the leased Tract, it shall not relieve the Lessee of the obligation to pay any bonus due thereon to the Louisiana State Mineral Board, nor shall the Louisiana State Mineral Board be obligated to refund any consideration paid by the Lessor prior to such modification, cancellation, or abrogation, including, but not limited to, bonuses, rentals and royalties.

NOTE: The State of Louisiana does hereby reserve, and this lease shall be subject to, the imprescriptible right of surface use in the nature of a servitude in favor of the Department of Natural Resources, including its Offices and Commissions, for the sole purpose of implementing, constructing, servicing and maintaining approved coastal zone management and/or restoration projects. Utilization of any and all rights derived under this lease by the mineral lessee, its agents, successors or assigns, shall not interfere with nor hinder the reasonable surface use by the

Department of Natural Resources, its Offices or Commissions, as herein above reserved.

NOTE: The Department of Wildlife and Fisheries has designated certain areas in the coastal waters of the State of Louisiana as Oyster Seed Bed Areas. The exact location of those Seed Bed Areas must be obtained from the Department of Wildlife and Fisheries and any work done under a mineral lease from the State of Louisiana may necessarily be conducted in conformity with the rules and regulations promulgated by the said Department of Wildlife and Fisheries for Oyster Seed Bed Areas.

Applicant: PATRICK L. DONOHUE PETROLEUM PROPERTIES, INC.

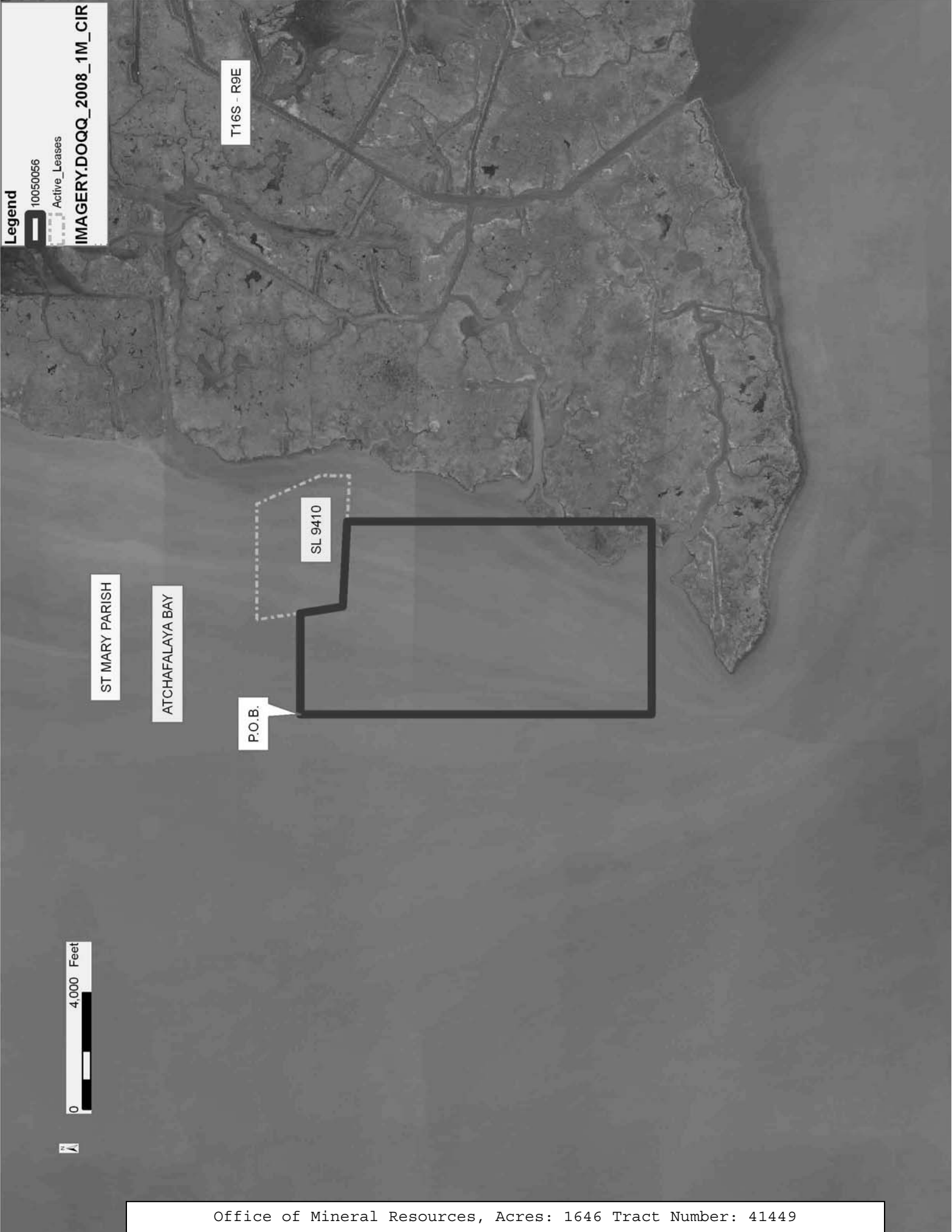
Bidder	Cash Payment	Price/ Acre	Rental	Oil	Gas	Other

Legend

10050056

Active_Leases

IMAGERY.DOQQ_2008_1M_CIR



TRACT 41450 - St. Mary Parish, Louisiana

All of the lands now or formerly constituting the beds and bottoms of all water bodies of every nature and description the title of which vests in the State of Louisiana, together with all islands arising therein and other lands formed by accretion or by reliction, where allowed by law, excepting tax adjudicated lands, and not presently under mineral lease on May 12, 2010, situated in St. Mary Parish, Louisiana, and more particularly described as follows: Beginning at a point on the East boundary of State Lease No. 13470 having Coordinates of X = 1,908,298.00 and Y = 367,123.50; thence East 3,829.00 feet to a point having Coordinates of X = 1,912,127.00 and Y = 367,123.50; thence South 6,697.50 feet to a point having Coordinates of X = 1,912,127.00 and Y = 360,426.00; thence West 1,346.00 feet to a point having Coordinates of X = 1,910,781.00 and Y = 360,426.00; thence South 5,370.00 feet to a point having Coordinates of X = 1,910,781.00 and Y = 355,056.00; thence West 5,272.00 feet to a point having Coordinates of X = 1,905,509.00 and Y = 355,056.00; thence North 10,459.71 feet to a point on the South boundary of State Lease No. 9410, as amended, having Coordinates of X = 1,905,509.00 and Y = 365,515.71; thence South 87 degrees 05 minutes 15 seconds East 1,576.39 feet along the South boundary of said State Lease No. 9410 to a point on the West boundary of State Lease No. 17290 having Coordinates of X = 1,907,083.35 and Y = 365,435.61; thence along the boundary of said State Lease No. 17290 the following courses: South 00 degrees 12 minutes 34 seconds West 3,235.63 feet; East 1,528.48 feet; North 4,045.00 feet and West 302.00 feet to a point on its North boundary, also being the Southeast corner of said State Lease No. 13470 having Coordinates of X = 1,908,298.00 and Y = 366,245.00; thence North 878.50 feet along the East boundary of said State Lease No. 13470 to the point of beginning, containing approximately **289 acres**, all as more particularly outlined on a plat on file in the Office of Mineral Resources, Department of Natural Resources. All bearings, distances and coordinates are based on Louisiana Coordinate System of 1927, (North or South Zone), where applicable.

NOTE: The above description of the Tract nominated for lease has been provided and corrected, where required, exclusively by the nomination party. Any mineral lease selected from this Tract and awarded by the Louisiana State Mineral Board shall be without warranty of any kind, either express, implied, or statutory, including, but not limited to, the implied warranties of merchantability and fitness for a particular purpose. Should the mineral lease awarded by the Louisiana State Mineral Board be subsequently modified, cancelled or abrogated due to the existence of conflicting leases, operating agreements, private claims or other future obligations or conditions which may affect all or any portion of the leased Tract, it shall not relieve the Lessee of the obligation to pay any bonus due thereon to the Louisiana State Mineral Board, nor shall the Louisiana State Mineral Board be obligated to refund any consideration paid by the Lessor prior to such modification, cancellation, or abrogation, including, but not limited to, bonuses, rentals and royalties.

NOTE: The State of Louisiana does hereby reserve, and this lease shall be subject to, the imprescriptible right of surface use in the nature of a servitude in favor of the Department of Natural Resources, including its Offices and Commissions, for the sole purpose of implementing, constructing, servicing and maintaining approved coastal zone management and/or restoration projects. Utilization of any and all rights derived under this lease by the mineral lessee, its agents, successors or assigns, shall not interfere with nor hinder the reasonable surface use by the Department of Natural Resources, its Offices or Commissions, as herein above reserved.

NOTE: The Department of Wildlife and Fisheries has designated certain areas in the coastal waters of the State of Louisiana as Oyster Seed Bed Areas. The exact location of those Seed Bed Areas must be obtained from the Department of Wildlife and Fisheries and any work done under a mineral lease from the State of Louisiana may necessarily be conducted in conformity with the rules and regulations promulgated by the said Department of Wildlife and Fisheries for Oyster Seed Bed Areas.

Applicant: PATRICK L. DONOHUE PETROLEUM PROPERTIES, INC.

Bidder	Cash Payment	Price/ Acre	Rental	Oil	Gas	Other

Legend

10050055

Active_Leases

IMAGERY.DOQQ_2008_1M_CIR

