

TRACT 41451 - Portion of Blocks 13, and 14, Main Pass Area, Revised, Plaquemines and St. Bernard Parishes, Louisiana

All of the lands now or formerly constituting the beds and bottoms of all water bodies of every nature and description the title of which vests in the State of Louisiana, together with all islands arising therein and other lands formed by accretion or by reliction, where allowed by law, excepting tax adjudicated lands, and not presently under mineral lease on May 12, 2010, situated in Plaquemines and St. Bernard Parishes, Louisiana, and more particularly described as follows: Beginning at a point on the North line of Block 14, Main Pass Area, Revised, having Coordinates of X = 2,594,600.00 and Y = 351,830.00; thence South 5,652.00 feet to a point having Coordinates of X = 2,594,600.00 and Y = 346,178.00; thence West 3,500.00 feet to a point on the West line of said Block 14, also being a point on the East line of Block 13, Main Pass Area, Revised, having Coordinates of X = 2,591,100.00 and Y = 346,178.00; thence West approximately 13,737 feet to a point on the Eastern boundary of State Lease No. 195, as amended, having a Coordinate of Y = 346,178.00; thence Northerly along the Eastern boundary of said State Lease No. 195 to the Northwest corner of said Block 13 having a Coordinate of Y = 351,830.00; thence East approximately 13,913 feet along the North line of said Block 13 to its Northeast corner, also being the Northwest corner of said Block 14 having Coordinates of X = 2,591,100.00 and Y = 351,830.00; thence East 3,500.00 feet along the North line of said Block 14 to the point of beginning, **LESS AND EXCEPT** that portion, if any, of State Lease No. 195, as amended, that may lie within the above described tract, containing approximately **2,255 acres**, all as more particularly outlined on a plat on file in the Office of Mineral Resources, Department of Natural Resources. All bearings, distances and coordinates are based on Louisiana Coordinate System of 1927, (North or South Zone), where applicable.

NOTE: The above description of the Tract nominated for lease has been provided and corrected, where required, exclusively by the nomination party. Any mineral lease selected from this Tract and awarded by the Louisiana State Mineral Board shall be without warranty of any kind, either express, implied, or statutory, including, but not limited to, the implied warranties of merchantability and fitness for a particular purpose. Should the mineral lease awarded by the Louisiana State Mineral Board be subsequently modified, cancelled or abrogated due to the existence of conflicting leases, operating agreements, private claims or other future obligations or conditions which may affect all or any portion of the leased Tract, it shall not relieve the Lessee of the obligation to pay any bonus due thereon to the Louisiana State Mineral Board, nor shall the Louisiana State Mineral Board be obligated to refund any consideration paid by the Lessor prior to such modification, cancellation, or abrogation, including, but not limited to, bonuses, rentals and royalties.

NOTE: The State of Louisiana does hereby reserve, and this lease shall be subject to, the imprescriptible right of surface use in the nature of a servitude in favor of the Department of Natural Resources, including its

Offices and Commissions, for the sole purpose of implementing, constructing, servicing and maintaining approved coastal zone management and/or restoration projects. Utilization of any and all rights derived under this lease by the mineral lessee, its agents, successors or assigns, shall not interfere with nor hinder the reasonable surface use by the Department of Natural Resources, its Offices or Commissions, as herein above reserved.

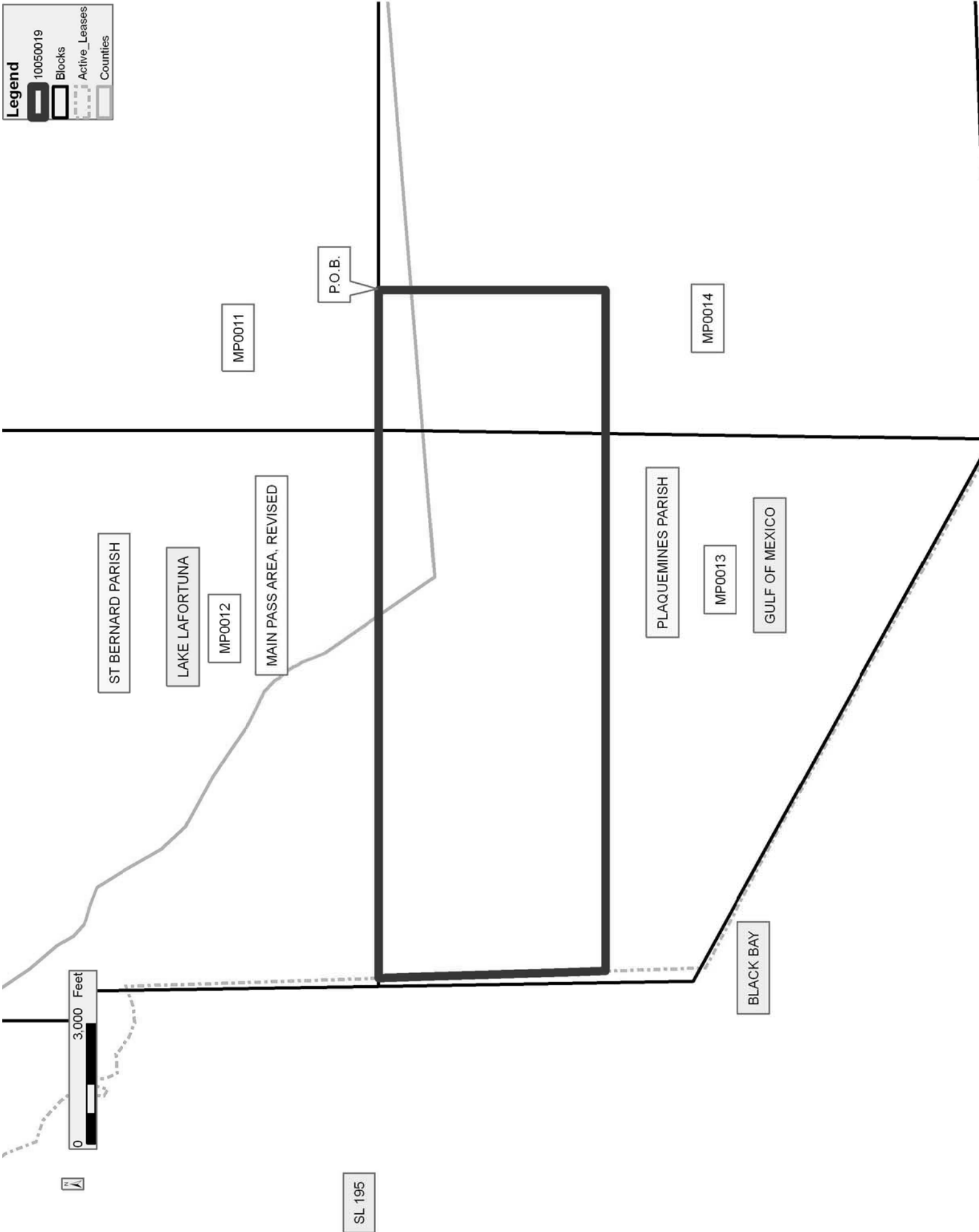
NOTE: The Department of Wildlife and Fisheries has designated certain areas in the coastal waters of the State of Louisiana as Oyster Seed Bed Areas. The exact location of those Seed Bed Areas must be obtained from the Department of Wildlife and Fisheries and any work done under a mineral lease from the State of Louisiana may necessarily be conducted in conformity with the rules and regulations promulgated by the said Department of Wildlife and Fisheries for Oyster Seed Bed Areas.

Applicant: EXCEL INVESTMENT PROPERTIES

Bidder	Cash Payment	Price/ Acre	Rental	Oil	Gas	Other

Legend

- 10050019
- Blocks
- Active_Leases
- Counties



TRACT 41452 - Portion of Block 13, Main Pass Area, Revised, Plaquemines Parish, Louisiana

All of the lands now or formerly constituting the beds and bottoms of all water bodies of every nature and description the title of which vests in the State of Louisiana, together with all islands arising therein and other lands formed by accretion or by reliction, where allowed by law, excepting tax adjudicated lands, and not presently under mineral lease on May 12, 2010, situated in Plaquemines Parish, Louisiana, and more particularly described as follows: Beginning at a point within Block 13, Main Pass Area, Revised, having Coordinates of X = 2,586,900.00 and Y = 346,178.00; thence South approximately 7,480 feet to a point on the Eastern boundary of State Lease No. 195, as amended, having a Coordinate of X = 2,586,900.00; thence Northwesterly and Northerly along the boundary of said State Lease No. 195 to a point of intersection with an East-West line having a Coordinate of Y = 346,178.00; thence East approximately 9,619 feet along said line to the point of beginning, **LESS AND EXCEPT** that portion, if any, of State Lease No. 195, as amended, that may lie within the above described tract, containing approximately **1,066 acres**, all as more particularly outlined on a plat on file in the Office of Mineral Resources, Department of Natural Resources. All bearings, distances and coordinates are based on Louisiana Coordinate System of 1927, (North or South Zone), where applicable.

NOTE: The above description of the Tract nominated for lease has been provided and corrected, where required, exclusively by the nomination party. Any mineral lease selected from this Tract and awarded by the Louisiana State Mineral Board shall be without warranty of any kind, either express, implied, or statutory, including, but not limited to, the implied warranties of merchantability and fitness for a particular purpose. Should the mineral lease awarded by the Louisiana State Mineral Board be subsequently modified, cancelled or abrogated due to the existence of conflicting leases, operating agreements, private claims or other future obligations or conditions which may affect all or any portion of the leased Tract, it shall not relieve the Lessee of the obligation to pay any bonus due thereon to the Louisiana State Mineral Board, nor shall the Louisiana State Mineral Board be obligated to refund any consideration paid by the Lessor prior to such modification, cancellation, or abrogation, including, but not limited to, bonuses, rentals and royalties.

NOTE: The State of Louisiana does hereby reserve, and this lease shall be subject to, the imprescriptible right of surface use in the nature of a servitude in favor of the Department of Natural Resources, including its Offices and Commissions, for the sole purpose of implementing, constructing, servicing and maintaining approved coastal zone management and/or restoration projects. Utilization of any and all rights derived under this lease by the mineral lessee, its agents, successors or assigns, shall not interfere with nor hinder the reasonable surface use by the Department of Natural Resources, its Offices or Commissions, as herein above reserved.

NOTE: The Department of Wildlife and Fisheries has designated certain areas in the coastal waters of the State of Louisiana as Oyster Seed Bed Areas. The exact location of those Seed Bed Areas must be obtained from the Department of Wildlife and Fisheries and any work done under a mineral lease from the State of Louisiana may necessarily be conducted in conformity with the rules and regulations promulgated by the said Department of Wildlife and Fisheries for Oyster Seed Bed Areas.

Applicant: EXCEL INVESTMENT PROPERTIES

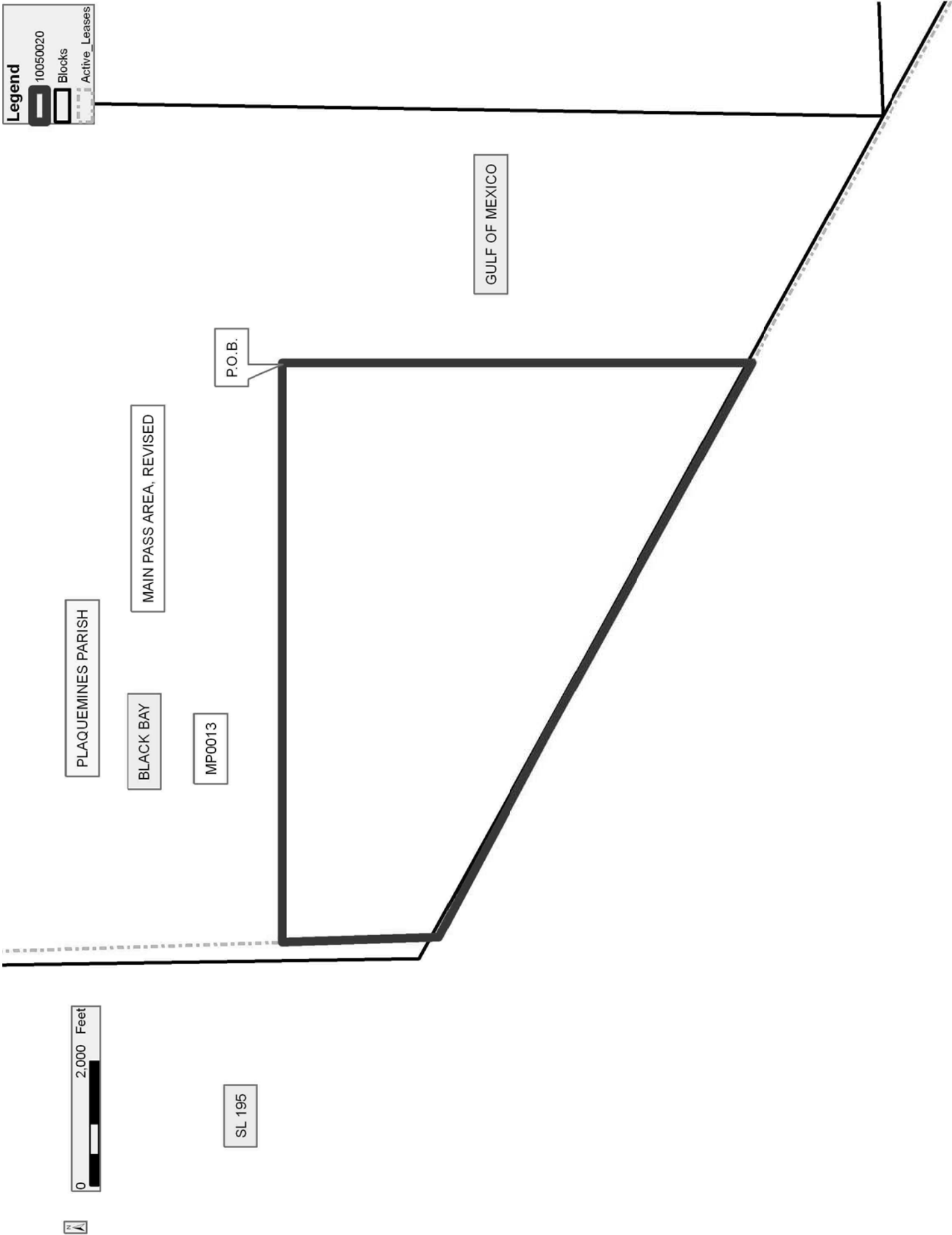
Bidder	Cash Payment	Price/ Acre	Rental	Oil	Gas	Other

Legend

10050020

Blocks

Active_Leases



TRACT 41453 - Portion of Blocks 13, 14, and 23, Main Pass Area, Revised, Plaquemines Parish, Louisiana

All of the lands now or formerly constituting the beds and bottoms of all water bodies of every nature and description the title of which vests in the State of Louisiana, together with all islands arising therein and other lands formed by accretion or by reliction, where allowed by law, excepting tax adjudicated lands, and not presently under mineral lease on May 12, 2010, situated in Plaquemines Parish, Louisiana, and more particularly described as follows: Beginning at a point within Block 13, Main Pass Area, Revised, having Coordinates of X = 2,586,900.00 and Y = 346,178.00; thence East 4,200.00 feet to a point on the East line of said Block 13, also being a point on the West line of Block 14, Main Pass Area, Revised, having Coordinates of X = 2,591,100.00 and Y = 346,178.00; thence East 6,193.00 feet to a point having Coordinates of X = 2,597,293.00; and Y = 346,178.00; thence South 9,098.00 feet to a point on the South line of said Block 14, also being a point on the North line of Block 23, Main Pass Area, Revised, having Coordinates of X = 2,597,293.00 and Y = 337,080.00; thence South approximately 4,103 feet to a point on the Eastern boundary of State Lease No. 195, as amended, having a Coordinate of X = 2,597,293.00; thence Northwesterly along the boundary of said State Lease No. 195 to a point of intersection on a North-South line having a Coordinate of X = 2,586,900.00; thence North approximately 7,480 feet along said line to the point of beginning, **LESS AND EXCEPT** that portion, if any, of State Lease No. 195, as amended, that may lie within the above described tract, containing approximately **2,471 acres**, all as more particularly outlined on a plat on file in the Office of Mineral Resources, Department of Natural Resources. All bearings, distances and coordinates are based on Louisiana Coordinate System of 1927, (North or South Zone), where applicable.

NOTE: The above description of the Tract nominated for lease has been provided and corrected, where required, exclusively by the nomination party. Any mineral lease selected from this Tract and awarded by the Louisiana State Mineral Board shall be without warranty of any kind, either express, implied, or statutory, including, but not limited to, the implied warranties of merchantability and fitness for a particular purpose. Should the mineral lease awarded by the Louisiana State Mineral Board be subsequently modified, cancelled or abrogated due to the existence of conflicting leases, operating agreements, private claims or other future obligations or conditions which may affect all or any portion of the leased Tract, it shall not relieve the Lessee of the obligation to pay any bonus due thereon to the Louisiana State Mineral Board, nor shall the Louisiana State Mineral Board be obligated to refund any consideration paid by the Lessor prior to such modification, cancellation, or abrogation, including, but not limited to, bonuses, rentals and royalties.

NOTE: The State of Louisiana does hereby reserve, and this lease shall be subject to, the imprescriptible right of surface use in the nature of a servitude in favor of the Department of Natural Resources, including its

Offices and Commissions, for the sole purpose of implementing, constructing, servicing and maintaining approved coastal zone management and/or restoration projects. Utilization of any and all rights derived under this lease by the mineral lessee, its agents, successors or assigns, shall not interfere with nor hinder the reasonable surface use by the Department of Natural Resources, its Offices or Commissions, as herein above reserved.

NOTE: The Department of Wildlife and Fisheries has designated certain areas in the coastal waters of the State of Louisiana as Oyster Seed Bed Areas. The exact location of those Seed Bed Areas must be obtained from the Department of Wildlife and Fisheries and any work done under a mineral lease from the State of Louisiana may necessarily be conducted in conformity with the rules and regulations promulgated by the said Department of Wildlife and Fisheries for Oyster Seed Bed Areas.

Applicant: EXCEL INVESTMENT PROPERTIES

Bidder	Cash Payment	Price/ Acre	Rental	Oil	Gas	Other

Legend

10050021

Blocks

Active Leases

MAIN PASS AREA, REVISED

PLAQUEMINES PARISH

MP0014

GULF OF MEXICO

MP0023

P.O.B.

MP0013

SL 195



TRACT 41454 - Portion of Blocks 14, and 23, Main Pass Area, Revised, Plaquemines Parish, Louisiana

All of the lands now or formerly constituting the beds and bottoms of all water bodies of every nature and description the title of which vests in the State of Louisiana, together with all islands arising therein and other lands formed by accretion or by reliction, where allowed by law, excepting tax adjudicated lands, and not presently under mineral lease on May 12, 2010, situated in Plaquemines Parish, Louisiana, and more particularly described as follows: Beginning at a point within Block 23, Main Pass Area, Revised, having Coordinates of X = 2,605,084.00 and Y = 333,976.00; thence West 7,791.00 feet to a point having Coordinates of X = 2,597,293.00 and Y = 333,976.00; thence North 3,104.00 feet to a point on the North line of said Block 23, also being a point on the South line of Block 14, Main Pass Area, Revised, having Coordinates of X = 2,597,293.00 and Y = 337,080.00; thence North 9,098.00 feet to a point having Coordinates of X = 2,597,293.00 and Y = 346,178.00; thence East 7,791.00 feet to a point having Coordinates of X = 2,605,084.00 and Y = 346,178.00; thence South 9,098.00 feet to a point on the South line of said Block 14, also being a point on the North line of said Block 23 having Coordinates of X = 2,605,084.00 and Y = 337,080.00; thence South 3,104.00 feet to the point of beginning, containing **2,182.41 acres**, all as more particularly outlined on a plat on file in the Office of Mineral Resources, Department of Natural Resources. All bearings, distances and coordinates are based on Louisiana Coordinate System of 1927, (North or South Zone), where applicable.

NOTE: The above description of the Tract nominated for lease has been provided and corrected, where required, exclusively by the nomination party. Any mineral lease selected from this Tract and awarded by the Louisiana State Mineral Board shall be without warranty of any kind, either express, implied, or statutory, including, but not limited to, the implied warranties of merchantability and fitness for a particular purpose. Should the mineral lease awarded by the Louisiana State Mineral Board be subsequently modified, cancelled or abrogated due to the existence of conflicting leases, operating agreements, private claims or other future obligations or conditions which may affect all or any portion of the leased Tract, it shall not relieve the Lessee of the obligation to pay any bonus due thereon to the Louisiana State Mineral Board, nor shall the Louisiana State Mineral Board be obligated to refund any consideration paid by the Lessor prior to such modification, cancellation, or abrogation, including, but not limited to, bonuses, rentals and royalties.

NOTE: The State of Louisiana does hereby reserve, and this lease shall be subject to, the imprescriptible right of surface use in the nature of a servitude in favor of the Department of Natural Resources, including its Offices and Commissions, for the sole purpose of implementing, constructing, servicing and maintaining approved coastal zone management and/or restoration projects. Utilization of any and all rights derived under this lease by the mineral lessee, its agents, successors or assigns,

shall not interfere with nor hinder the reasonable surface use by the Department of Natural Resources, its Offices or Commissions, as herein above reserved.

NOTE: The Department of Wildlife and Fisheries has designated certain areas in the coastal waters of the State of Louisiana as Oyster Seed Bed Areas. The exact location of those Seed Bed Areas must be obtained from the Department of Wildlife and Fisheries and any work done under a mineral lease from the State of Louisiana may necessarily be conducted in conformity with the rules and regulations promulgated by the said Department of Wildlife and Fisheries for Oyster Seed Bed Areas.

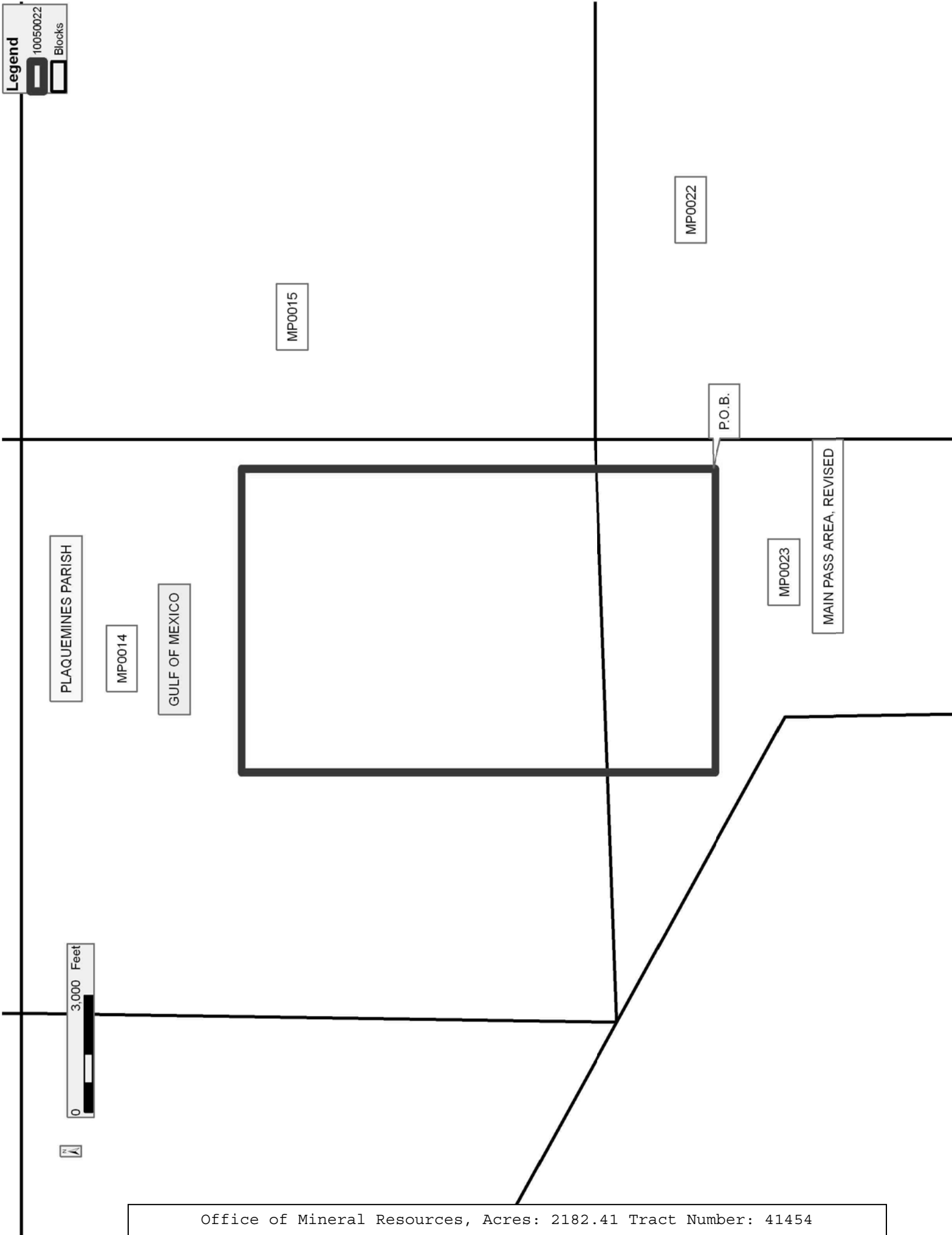
Applicant: EXCEL INVESTMENT PROPERTIES

Bidder	Cash Payment	Price/ Acre	Rental	Oil	Gas	Other

Legend

10050022

Blocks



TRACT 41455 - Portion of Blocks 23, and 24, Main Pass Area, Revised, Plaquemines Parish, Louisiana

All of the lands now or formerly constituting the beds and bottoms of all water bodies of every nature and description the title of which vests in the State of Louisiana, together with all islands arising therein and other lands formed by accretion or by reliction, where allowed by law, excepting tax adjudicated lands, and not presently under mineral lease on May 12, 2010, situated in Plaquemines Parish, Louisiana, and more particularly described as follows: Beginning at a point within Block 23, Main Pass Area, Revised, having Coordinates of X = 2,605,084.00 and Y = 333,976.00; thence South 11,646.00 feet to a point on the South line of said Block 23, also being a point on the North line of Block 24, Main Pass Area, Revised, having Coordinates of X = 2,605,084.00; and Y = 322,330.00; thence South 3,083.00 feet to a point having Coordinates of X = 2,605,084.00; and Y = 319,247.00; thence West approximately 9,166 feet to a point on the Eastern boundary of State Lease No. 195, as amended, having a Coordinate of Y = 319,247.00; thence along the boundary of said State Lease No. 195 the following: Northeasterly, Northerly, and Northwesterly to a point of intersection with a North-South line having a Coordinate of X = 2,597,293.00; thence North approximately 995 feet along said line to a point having Coordinates of X = 2,597,293.00 and Y = 333,976.00; thence East 7,791.00 feet to the point of beginning, **LESS AND EXCEPT** that portion, if any, of State Lease No. 195, as amended, that may lie within the above described tract, containing approximately **2,411 acres**, all as more particularly outlined on a plat on file in the Office of Mineral Resources, Department of Natural Resources. All bearings, distances and coordinates are based on Louisiana Coordinate System of 1927, (North or South Zone), where applicable.

NOTE: The above description of the Tract nominated for lease has been provided and corrected, where required, exclusively by the nomination party. Any mineral lease selected from this Tract and awarded by the Louisiana State Mineral Board shall be without warranty of any kind, either express, implied, or statutory, including, but not limited to, the implied warranties of merchantability and fitness for a particular purpose. Should the mineral lease awarded by the Louisiana State Mineral Board be subsequently modified, cancelled or abrogated due to the existence of conflicting leases, operating agreements, private claims or other future obligations or conditions which may affect all or any portion of the leased Tract, it shall not relieve the Lessee of the obligation to pay any bonus due thereon to the Louisiana State Mineral Board, nor shall the Louisiana State Mineral Board be obligated to refund any consideration paid by the Lessor prior to such modification, cancellation, or abrogation, including, but not limited to, bonuses, rentals and royalties.

NOTE: The State of Louisiana does hereby reserve, and this lease shall be subject to, the imprescriptible right of surface use in the nature of a servitude in favor of the Department of Natural Resources, including its Offices and Commissions, for the sole purpose of implementing,

constructing, servicing and maintaining approved coastal zone management and/or restoration projects. Utilization of any and all rights derived under this lease by the mineral lessee, its agents, successors or assigns, shall not interfere with nor hinder the reasonable surface use by the Department of Natural Resources, its Offices or Commissions, as herein above reserved.

NOTE: The Department of Wildlife and Fisheries has designated certain areas in the coastal waters of the State of Louisiana as Oyster Seed Bed Areas. The exact location of those Seed Bed Areas must be obtained from the Department of Wildlife and Fisheries and any work done under a mineral lease from the State of Louisiana may necessarily be conducted in conformity with the rules and regulations promulgated by the said Department of Wildlife and Fisheries for Oyster Seed Bed Areas.

Applicant: EXCEL INVESTMENT PROPERTIES

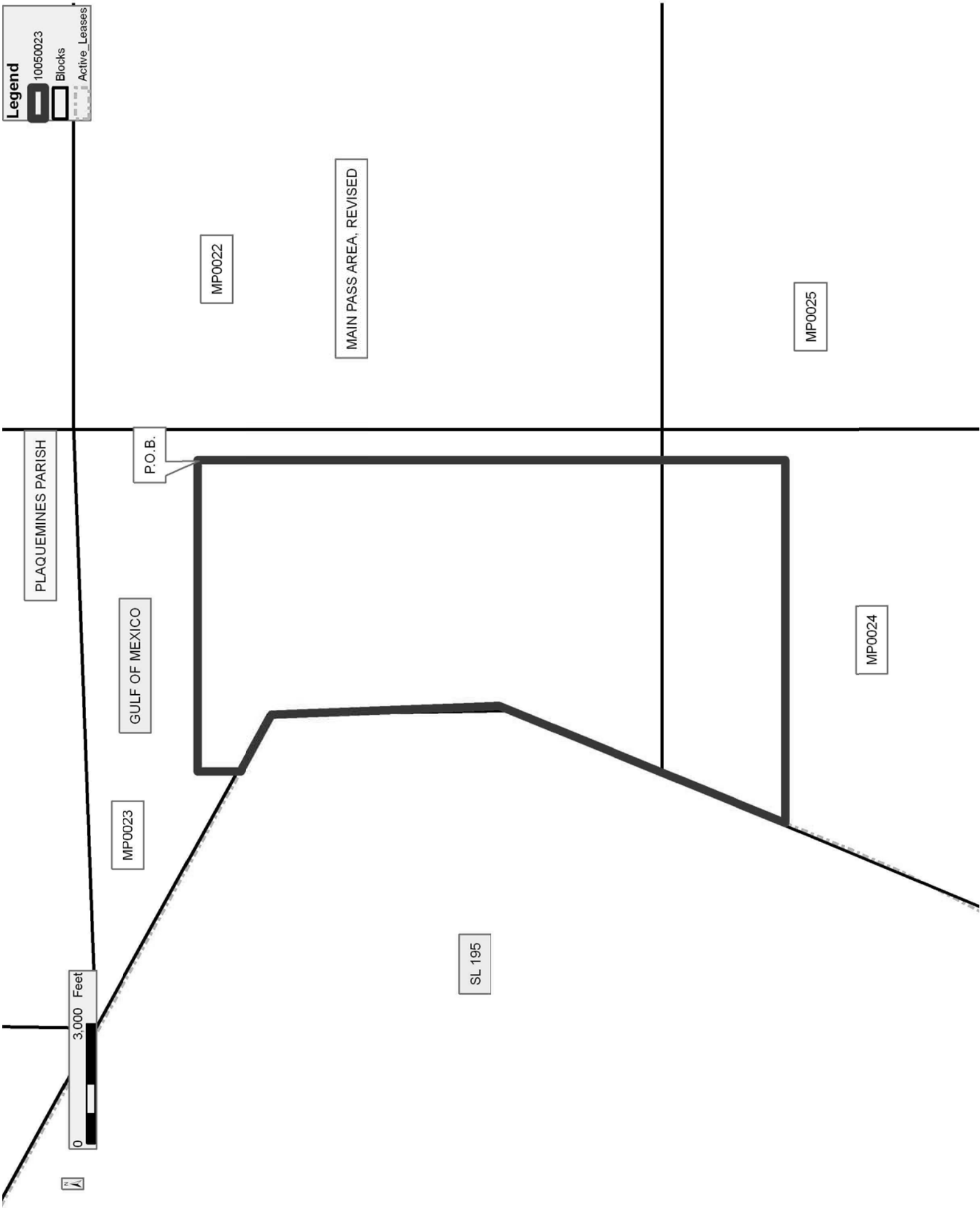
Bidder	Cash Payment	Price/ Acre	Rental	Oil	Gas	Other

Legend

10050023

Blocks

Active_Leases



TRACT 41456 - Plaquemines Parish, Louisiana

All of the lands now or formerly constituting the beds and bottoms of all water bodies of every nature and description the title of which vests in the State of Louisiana, together with all islands arising therein and other lands formed by accretion or by reliction, where allowed by law, excepting tax adjudicated lands, and not presently under mineral lease on May 12, 2010, situated in Plaquemines Parish, Louisiana, and more particularly described as follows: Beginning at the Northernmost corner of State Lease No. 20198 having Coordinates of X = 2,483,551.00 and Y = 330,851.00; thence North 27 degrees 18 minutes 58 seconds East 3,941.80 feet to a corner located on the boundary of State Lease No. 16403, as amended, having Coordinates of X = 2,485,359.89 and Y = 334,353.24; thence along the boundary of said State Lease No. 16403 the following courses: Southeasterly along an arc to the left having a radius of 875.00 feet and a center at X = 2,486,233.22 and Y = 334,299.17 to a corner having Coordinates of X = 2,485,633.44 and Y = 333,662.08; Southeasterly along an arc to the left having a radius of 1,660.00 feet and a center at X = 2,486,771.31 and Y = 334,870.74 to a corner having Coordinates of X = 2,485,705.36 and Y = 333,598.20; Southeasterly along an arc to the left having a radius of 1,150.00 and a center at X = 2,486,631.62 and Y = 334,279.77 to a corner having Coordinates of X = 2,485,834.60 and Y = 333,450.76; South 46 degrees 07 minutes 37 seconds East 86.89 feet to a corner having Coordinates of X = 2,485,897.24 and Y = 333,390.54; Southeasterly along an arc to the left having a radius of 800.00 feet and a center at X = 2,486,451.69 and Y = 333,967.24 to a corner having Coordinates of X = 2,486,409.86 and Y = 333,168.34; South 87 degrees 00 minutes 11 seconds East 136.00 feet to a corner having Coordinates of X = 2,486,545.68 and Y = 333,161.23; Northeasterly along an arc having a radius of 3,600.00 feet and a center at X = 2,484,467.96 and Y = 336,101.14 to a corner having Coordinates of X = 2,486,736.87 and Y = 333,306.14; North 54 degrees 45 minutes 00 seconds East 1,364.56 feet to a corner having Coordinates of X = 2,487,851.23 and Y = 334,093.69 and Northeasterly along an arc to the left having a radius of 1,580.00 feet and a center at X = 2,486,939.30 and Y = 335,383.96 to its Northeast corner having Coordinates of X = 2,488,265.79 and Y = 334,525.57; thence North approximately 405 feet to a point on the Southwestern boundary of State Lease No. 1319, as amended, having a Coordinate of X = 2,488,265.79; thence Southeasterly along the boundary of said State Lease No. 1319 to the point of intersection with the Northwest boundary or a projection thereof of State Lease No. 11930, as amended; thence along the boundary of said State lease No. 11930 the following: Southwesterly approximately 2,846 feet to its Westernmost corner; Southeasterly approximately 1,997 feet to its Southernmost corner and Northeasterly approximately 3,082 feet to the point of intersection with the Southwestern boundary of said State Lease No. 1319; thence Southeasterly along the boundary of said State Lease No. 1319 to the point of intersection with a line bearing North 45 degrees 00 minutes 00 seconds East, projected from a point having Coordinates of X = 2,494,525.01 and Y = 327,355.53; thence South 45 degrees 00 minutes 00 seconds West approximately 2,019 feet along said

line to said point being the Northernmost corner of State Lease No. 19406 having Coordinates of X = 2,494,525.01 and Y = 327,355.53; thence along the boundary of said State Lease No. 19406 the following courses: South 58 degrees 38 minutes 04 seconds West 1,537.80 feet to a corner having Coordinates of X = 2,493,211.94 and Y = 326,555.11 and South 21 degrees 05 minutes 44 seconds West 603.60 feet to its Southwest corner having Coordinates of X = 2,492,994.69 and Y = 325,991.96; thence South 45 degrees 00 minutes 00 seconds West 5,119.54 feet to a point on the Northeastern boundary of said State Lease No. 20198 having Coordinates of X = 2,489,374.63 and Y = 322,371.90; thence North 34 degrees 28 minutes 56 seconds West 10,286.39 feet along the boundary of said State Lease No. 20198 to the point of beginning, **LESS AND EXCEPT** that portion, if any, of State Lease No. 1319, as amended, and State Lease No. 11930, as amended, which may lie within the above described tract, containing approximately **520 acres**, all as more particularly outlined on a plat on file in the Office of Mineral Resources, Department of Natural Resources. All bearings, distances and coordinates are based on Louisiana Coordinate System of 1927, (North or South Zone), where applicable.

NOTE: The above description of the Tract nominated for lease has been provided and corrected, where required, exclusively by the nomination party. Any mineral lease selected from this Tract and awarded by the Louisiana State Mineral Board shall be without warranty of any kind, either express, implied, or statutory, including, but not limited to, the implied warranties of merchantability and fitness for a particular purpose. Should the mineral lease awarded by the Louisiana State Mineral Board be subsequently modified, cancelled or abrogated due to the existence of conflicting leases, operating agreements, private claims or other future obligations or conditions which may affect all or any portion of the leased Tract, it shall not relieve the Lessee of the obligation to pay any bonus due thereon to the Louisiana State Mineral Board, nor shall the Louisiana State Mineral Board be obligated to refund any consideration paid by the Lessor prior to such modification, cancellation, or abrogation, including, but not limited to, bonuses, rentals and royalties.

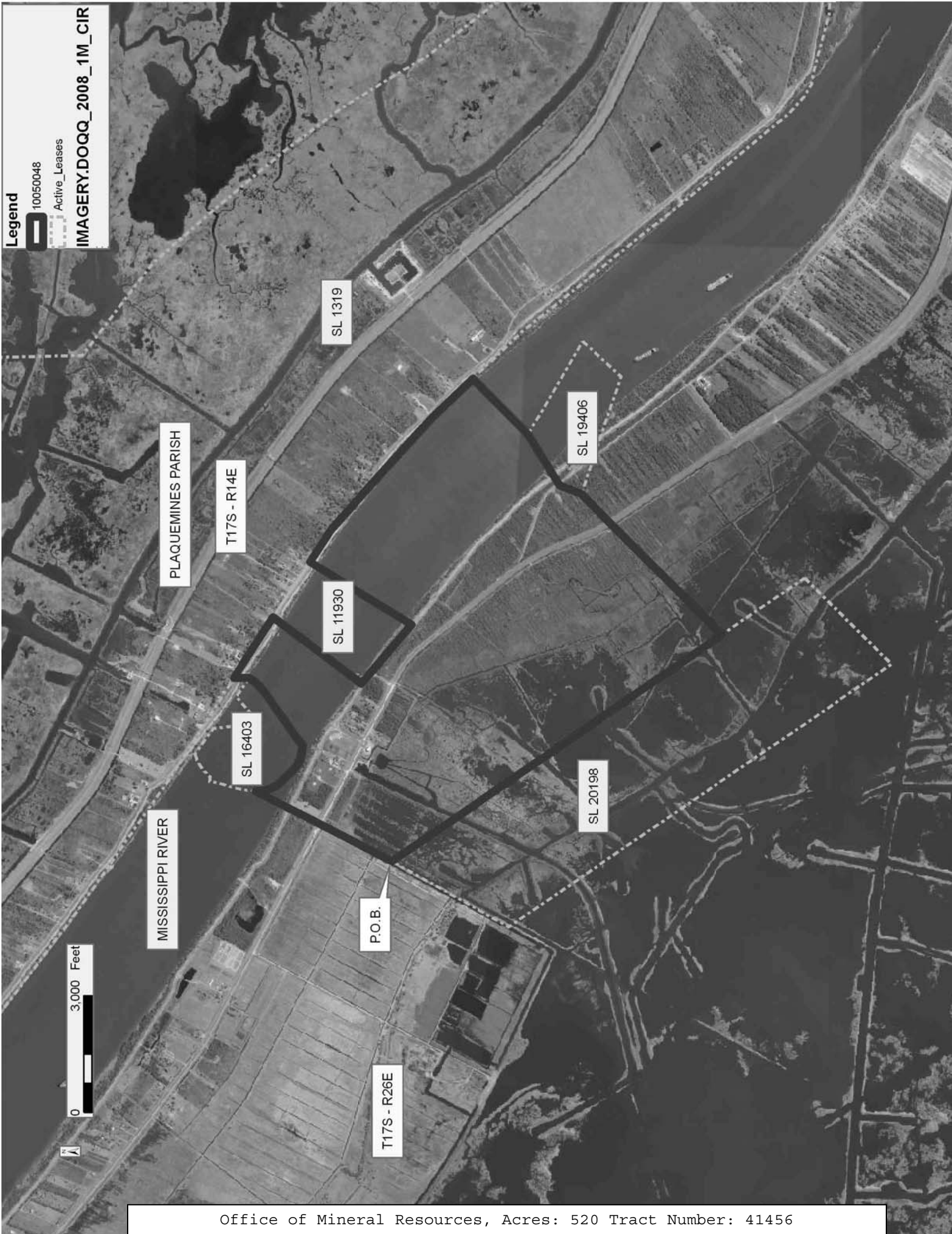
NOTE: The State of Louisiana does hereby reserve, and this lease shall be subject to, the imprescriptible right of surface use in the nature of a servitude in favor of the Department of Natural Resources, including its Offices and Commissions, for the sole purpose of implementing, constructing, servicing and maintaining approved coastal zone management and/or restoration projects. Utilization of any and all rights derived under this lease by the mineral lessee, its agents, successors or assigns, shall not interfere with nor hinder the reasonable surface use by the Department of Natural Resources, its Offices or Commissions, as herein above reserved.

NOTE: The Department of Wildlife and Fisheries has designated certain areas in the coastal waters of the State of Louisiana as Oyster Seed Bed Areas. The exact location of those Seed Bed Areas must be obtained from

the Department of Wildlife and Fisheries and any work done under a mineral lease from the State of Louisiana may necessarily be conducted in conformity with the rules and regulations promulgated by the said Department of Wildlife and Fisheries for Oyster Seed Bed Areas.

Applicant: THEOPHILUS OIL, GAS & LAND SERVICES, LLC

Bidder	Cash Payment	Price/ Acre	Rental	Oil	Gas	Other



TRACT 41457 - Plaquemines Parish, Louisiana

All of the lands now or formerly constituting the beds and bottoms of all water bodies of every nature and description the title of which vests in the State of Louisiana, together with all islands arising therein and other lands formed by accretion or by reliction, where allowed by law, excepting tax adjudicated lands, and not presently under mineral lease on May 12, 2010, situated in Plaquemines Parish, Louisiana, and more particularly described as follows: Beginning at a point on the South line of Block 25, South Pass Area, also being a point on the Louisiana Coastline, as decreed by the Supreme Court of the United States, as determined by a Special Master appointed therein, in litigation styled *United States v. State of Louisiana et al No. 9 Original*, in 1975, having Coordinates of X = 2,638,542.98 and Y = 126,424.00; thence West approximately 1,911 feet along the South line of said Block 25 and an extension thereof to a point on the Eastern boundary of State Lease No. 2227 having a Coordinate of Y = 126,424.00; thence Northeasterly approximately 4,830 feet along the Eastern boundary of said State Lease No. 2227 to a point on the Southern boundary of said State Lease No. 1009; thence along the boundary of said State Lease No. 1009 the following courses: Easterly approximately 1,585 feet, North 24 degrees 02 minutes 48 seconds East 1,445.44 feet, North 63 degrees 57 minutes 18 seconds East 296.08 feet, North 64 degrees 17 minutes 24 seconds East 299.67 feet, North 35 degrees 13 minutes 03 seconds East 312.13 feet, North 28 degrees 18 minutes 03 seconds East 147.65 feet, North 16 degrees 51 minutes 30 seconds East 172.41 feet, North 71 degrees 53 minutes 46 seconds East 273.54 feet; North 66 degrees 08 minutes 23 seconds East 284.30 feet, North 62 degrees 02 minutes 57 seconds East 277.35 feet, North 56 degrees 51 minutes 11 seconds East 292.62 feet, North 56 degrees 18 minutes 36 seconds East 288.44 feet, North 05 degrees 42 minutes 38 seconds West 351.75 feet, North 13 degrees 27 minutes 55 seconds West 365.03 feet, North 20 degrees 20 minutes 39 seconds West 474.61 feet, North 24 degrees 12 minutes 03 seconds West 487.88 feet, North 23 degrees 29 minutes 41 seconds West 294.41 feet, North 24 degrees 02 minutes 48 seconds East 1,147.01 feet, South 77 degrees 11 minutes 10 seconds East 1,271.52 feet and South 45 degrees 34 minutes 34 seconds East 1,679.67 feet to a point on said Louisiana Coastline having Coordinates of X = 2,645,239.45 and Y = 134,984.77; thence along said Louisiana Coastline the following courses: Southwesterly on a straight line to a point having Coordinates of X = 2,644,940 and Y = 134,910, Southwesterly on a straight line to a point having Coordinates of X = 2,641,835 and Y = 129,725, Southwesterly on a straight line to a point having Coordinates of X = 2,639,545 and Y = 126,825, Westerly on a straight line to a point having Coordinates of X = 2,638,945 and Y = 126,780 and Southwesterly on a straight line to the point of beginning, **LESS AND EXCEPT** any portion of said State Lease No. 1009 and State Lease No. 2227, that may lie within the above described tract, containing approximately **562 acres**, all as more particularly outlined on a plat on file in the Office of Mineral Resources, Department of Natural Resources. All bearings, distances and coordinates are based on

Louisiana Coordinate System of 1927, (North or South Zone), where applicable.

NOTE: The above description of the Tract nominated for lease has been provided and corrected, where required, exclusively by the nomination party. Any mineral lease selected from this Tract and awarded by the Louisiana State Mineral Board shall be without warranty of any kind, either express, implied, or statutory, including, but not limited to, the implied warranties of merchantability and fitness for a particular purpose. Should the mineral lease awarded by the Louisiana State Mineral Board be subsequently modified, cancelled or abrogated due to the existence of conflicting leases, operating agreements, private claims or other future obligations or conditions which may affect all or any portion of the leased Tract, it shall not relieve the Lessee of the obligation to pay any bonus due thereon to the Louisiana State Mineral Board, nor shall the Louisiana State Mineral Board be obligated to refund any consideration paid by the Lessor prior to such modification, cancellation, or abrogation, including, but not limited to, bonuses, rentals and royalties.

NOTE: The State of Louisiana does hereby reserve, and this lease shall be subject to, the imprescriptible right of surface use in the nature of a servitude in favor of the Department of Natural Resources, including its Offices and Commissions, for the sole purpose of implementing, constructing, servicing and maintaining approved coastal zone management and/or restoration projects. Utilization of any and all rights derived under this lease by the mineral lessee, its agents, successors or assigns, shall not interfere with nor hinder the reasonable surface use by the Department of Natural Resources, its Offices or Commissions, as herein above reserved.

NOTE: The Department of Wildlife and Fisheries has designated certain areas in the coastal waters of the State of Louisiana as Oyster Seed Bed Areas. The exact location of those Seed Bed Areas must be obtained from the Department of Wildlife and Fisheries and any work done under a mineral lease from the State of Louisiana may necessarily be conducted in conformity with the rules and regulations promulgated by the said Department of Wildlife and Fisheries for Oyster Seed Bed Areas.

Bidder	Cash Payment	Price/ Acre	Rental	Oil	Gas	Other

Applicant: HAROLD J. ANDERSON, INC.

