

**TRACT 41550 - Calcasieu Parish, Louisiana**

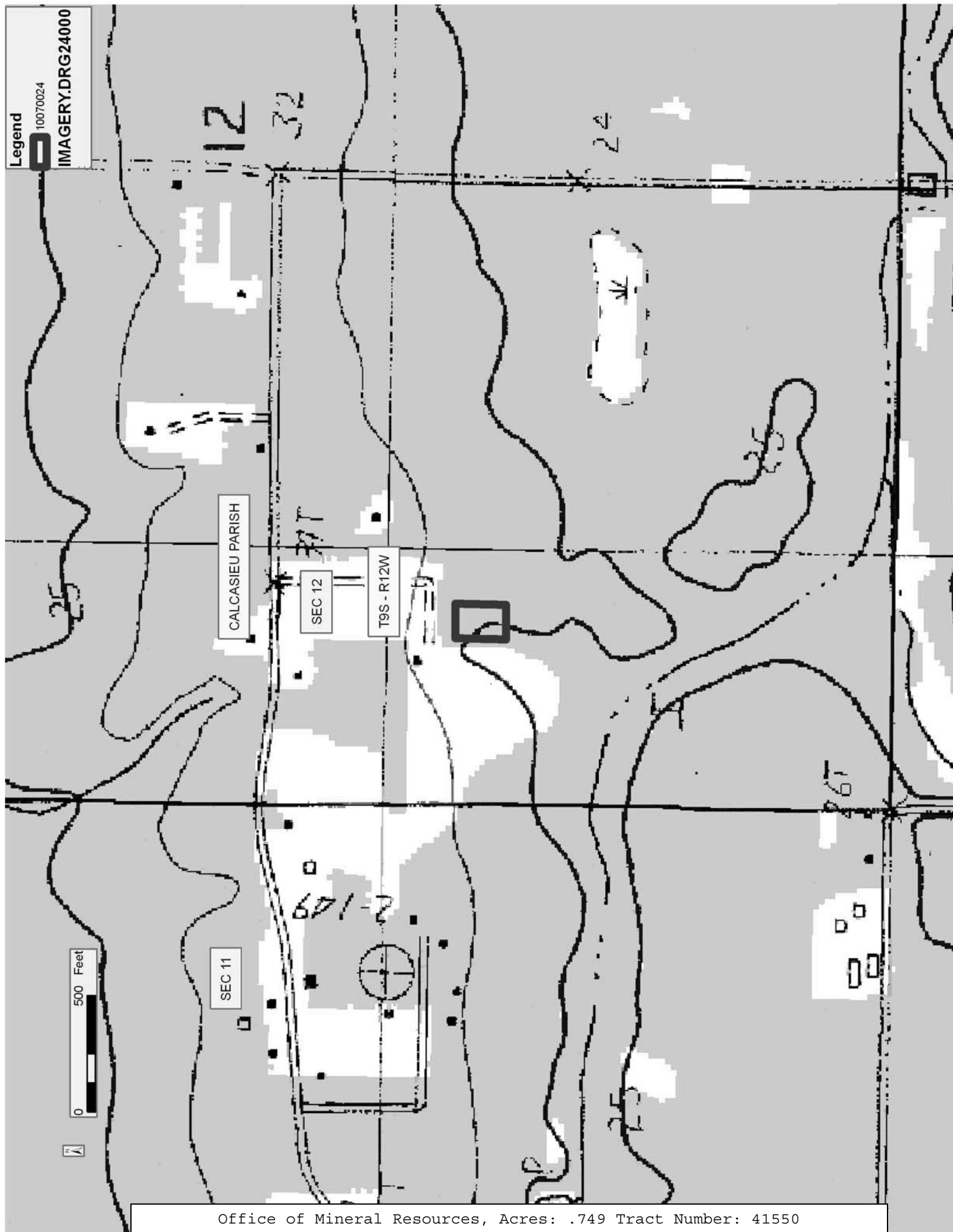
All of the mineral rights only under land adjudicated to and acquired by the State of Louisiana in and through a proper tax sale, and subsequently alienated by the State which retained the mineral rights thereto, and which is not under valid mineral lease from the State of Louisiana on July 14, 2010, situated in Calcasieu Parish, Louisiana, and being more fully described as follows: Commencing 680 feet West and 392 feet North of the Southeast corner of the Northwest Quarter of the Southwest Quarter (NW/4 of the SW/4) of Section 12, Township 9 South, Range 12 West, Calcasieu Parish, Louisiana; thence run North 219 feet; thence East 149 feet; thence South 219 feet; thence West 149 feet to the point of beginning; being the same land adjudicated to the State of Louisiana for unpaid taxes for the year 1932 in the name of Mrs. Ellen L. Hereford; containing approximately **0.7491 acres**, all as more particularly outlined on a plat on file in the Office of Mineral Resources, Department of Natural Resources. All bearings, distances and coordinates are based on Louisiana Coordinate System of 1927, (North or South Zone), where applicable.

NOTE: The above description of the Tract nominated for lease has been provided and corrected, where required, exclusively by the nomination party. Any mineral lease selected from this Tract and awarded by the Louisiana State Mineral Board shall be without warranty of any kind, either express, implied, or statutory, including, but not limited to, the implied warranties of merchantability and fitness for a particular purpose. Should the mineral lease awarded by the Louisiana State Mineral Board be subsequently modified, cancelled or abrogated due to the existence of conflicting leases, operating agreements, private claims or other future obligations or conditions which may affect all or any portion of the leased Tract, it shall not relieve the Lessee of the obligation to pay any bonus due thereon to the Louisiana State Mineral Board, nor shall the Louisiana State Mineral Board be obligated to refund any consideration paid by the Lessor prior to such modification, cancellation, or abrogation, including, but not limited to, bonuses, rentals and royalties.

NOTE: There shall be no surface operations conducted on the subject property.

Applicant: CHARLESTON ENERGY, INC.

Bidder	Cash Payment	Price/ Acre	Rental	Oil	Gas	Other



**TRACT 41551 - Calcasieu Parish, Louisiana**

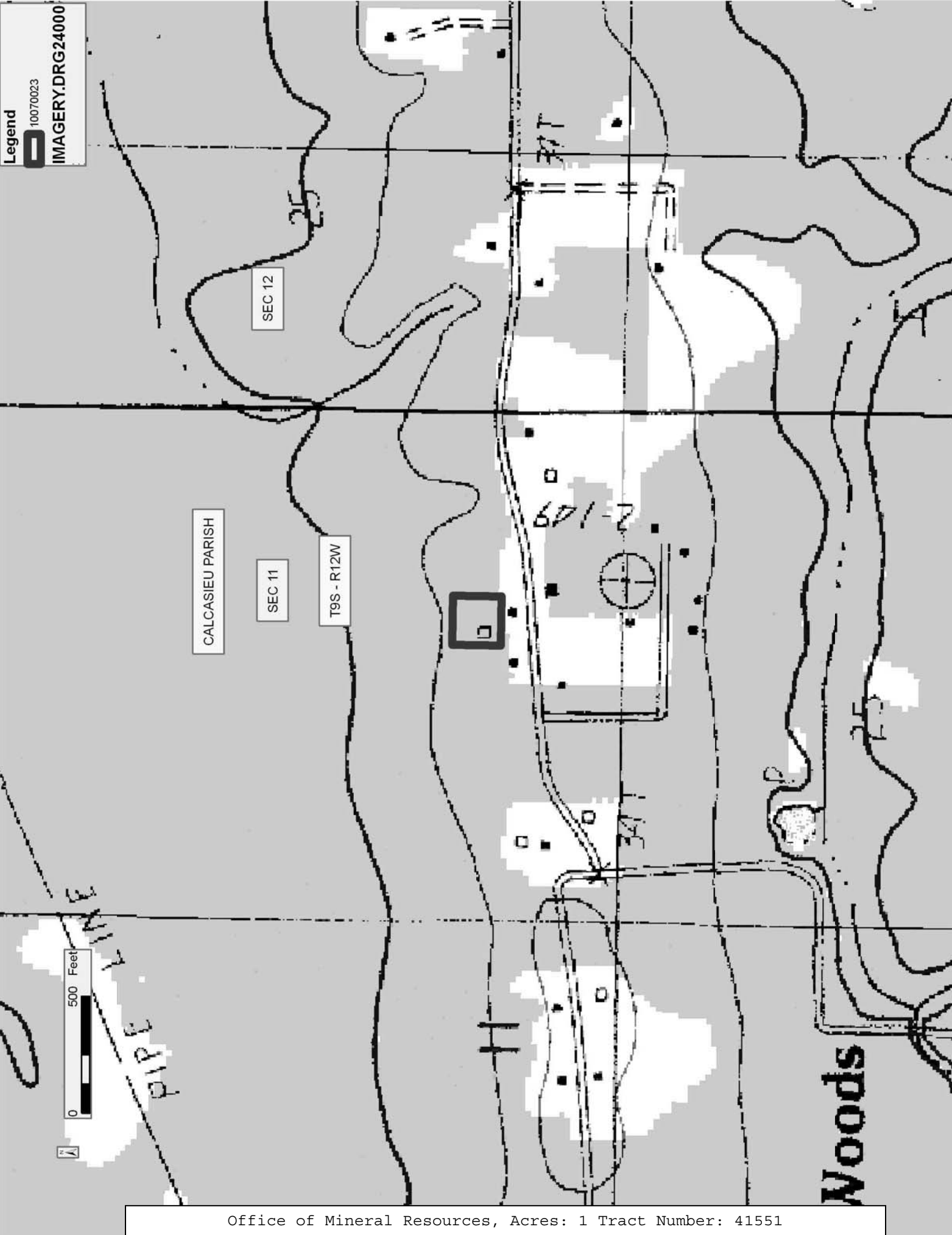
All of the mineral rights only under land adjudicated to and acquired by the State of Louisiana in and through a proper tax sale, and subsequently alienated by the State which retained the mineral rights thereto, and which is not under valid mineral lease from the State of Louisiana on July 14, 2010, situated in Calcasieu Parish, Louisiana, and being more fully described as follows: Commencing 840 feet West of the Southeast corner of the Southeast Quarter of the Northeast Quarter (SE/4 of the NE/4) of Section 11, Township 9 South, Range 12 West, Calcasieu Parish, Louisiana; thence West 210 feet; North 210 feet; East 210 feet and South 210 feet; being the same land adjudicated to the State of Louisiana for unpaid taxes for the year 1932 in the name of R.C. Broussard; containing approximately **1 acre**, all as more particularly outlined on a plat on file in the Office of Mineral Resources, Department of Natural Resources. All bearings, distances and coordinates are based on Louisiana Coordinate System of 1927, (North or South Zone), where applicable.

NOTE: The above description of the Tract nominated for lease has been provided and corrected, where required, exclusively by the nomination party. Any mineral lease selected from this Tract and awarded by the Louisiana State Mineral Board shall be without warranty of any kind, either express, implied, or statutory, including, but not limited to, the implied warranties of merchantability and fitness for a particular purpose. Should the mineral lease awarded by the Louisiana State Mineral Board be subsequently modified, cancelled or abrogated due to the existence of conflicting leases, operating agreements, private claims or other future obligations or conditions which may affect all or any portion of the leased Tract, it shall not relieve the Lessee of the obligation to pay any bonus due thereon to the Louisiana State Mineral Board, nor shall the Louisiana State Mineral Board be obligated to refund any consideration paid by the Lessor prior to such modification, cancellation, or abrogation, including, but not limited to, bonuses, rentals and royalties.

NOTE: There shall be no surface operations conducted on the subject property.

Applicant: CHARLESTON ENERGY, INC.

Bidder	Cash Payment	Price/ Acre	Rental	Oil	Gas	Other



**TRACT 41552 - Calcasieu Parish, Louisiana**

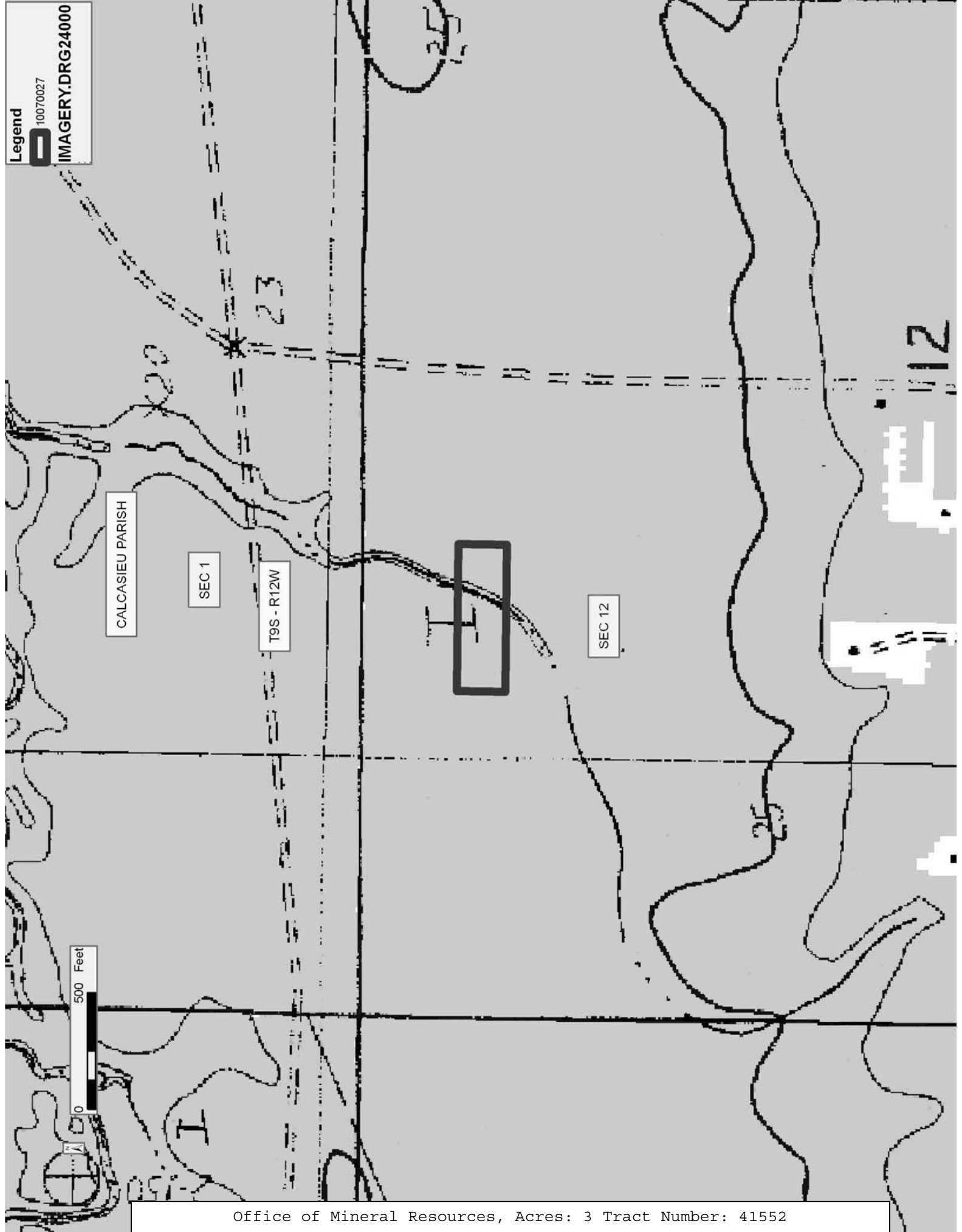
All of the mineral rights only under land adjudicated to and acquired by the State of Louisiana in and through a proper tax sale, and subsequently alienated by the State which retained the mineral rights thereto, and which is not under valid mineral lease from the State of Louisiana on July 14, 2010, situated in Calcasieu Parish, Louisiana, and being more fully described as follows: Commencing 840 feet North of the Southwest corner of the Northeast Quarter of the Northwest Quarter (NE/4 of the NW/4) of Section 12, Township 9 South, Range 12 West, Calcasieu Parish, Louisiana; thence North 210 feet, East 630 feet, etc; being the same land adjudicated to the State of Louisiana for unpaid taxes for the year 1932 in the name of Wm. Bradshaw et al, containing approximately **3 acres**, all as more particularly outlined on a plat on file in the Office of Mineral Resources, Department of Natural Resources. All bearings, distances and coordinates are based on Louisiana Coordinate System of 1927, (North or South Zone), where applicable.

NOTE: The above description of the Tract nominated for lease has been provided and corrected, where required, exclusively by the nomination party. Any mineral lease selected from this Tract and awarded by the Louisiana State Mineral Board shall be without warranty of any kind, either express, implied, or statutory, including, but not limited to, the implied warranties of merchantability and fitness for a particular purpose. Should the mineral lease awarded by the Louisiana State Mineral Board be subsequently modified, cancelled or abrogated due to the existence of conflicting leases, operating agreements, private claims or other future obligations or conditions which may affect all or any portion of the leased Tract, it shall not relieve the Lessee of the obligation to pay any bonus due thereon to the Louisiana State Mineral Board, nor shall the Louisiana State Mineral Board be obligated to refund any consideration paid by the Lessor prior to such modification, cancellation, or abrogation, including, but not limited to, bonuses, rentals and royalties.

NOTE: There shall be no surface operations conducted on the subject property.

Applicant: CHARLESTON ENERGY, INC.

Bidder	Cash Payment	Price/Acre	Rental	Oil	Gas	Other



**TRACT 41553 - Calcasieu Parish, Louisiana**

All of the mineral rights only under land adjudicated to and acquired by the State of Louisiana in and through a proper tax sale, and subsequently alienated by the State which retained the mineral rights thereto, and which is not under valid mineral lease from the State of Louisiana on July 14, 2010, situated in Calcasieu Parish, Louisiana, and being more fully described as follows: Commencing at the Southeast corner of the Northeast Quarter of the Northeast Quarter (NE/4 of the NE/4) of Section 12, Township 9 South, Range 12 West, Calcasieu Parish, Louisiana; thence North approximately 626.13 feet; thence West approximately 208.71 feet; thence South approximately 626.13 feet; thence East approximately 208.71 feet to point of commencement; being the same land adjudicated to the State of Louisiana for unpaid taxes for the year 1932 in the name of Johnson Bros. Inc; containing approximately **3 acres**, all as more particularly outlined on a plat on file in the Office of Mineral Resources, Department of Natural Resources. All bearings, distances and coordinates are based on Louisiana Coordinate System of 1927, (North or South Zone), where applicable.

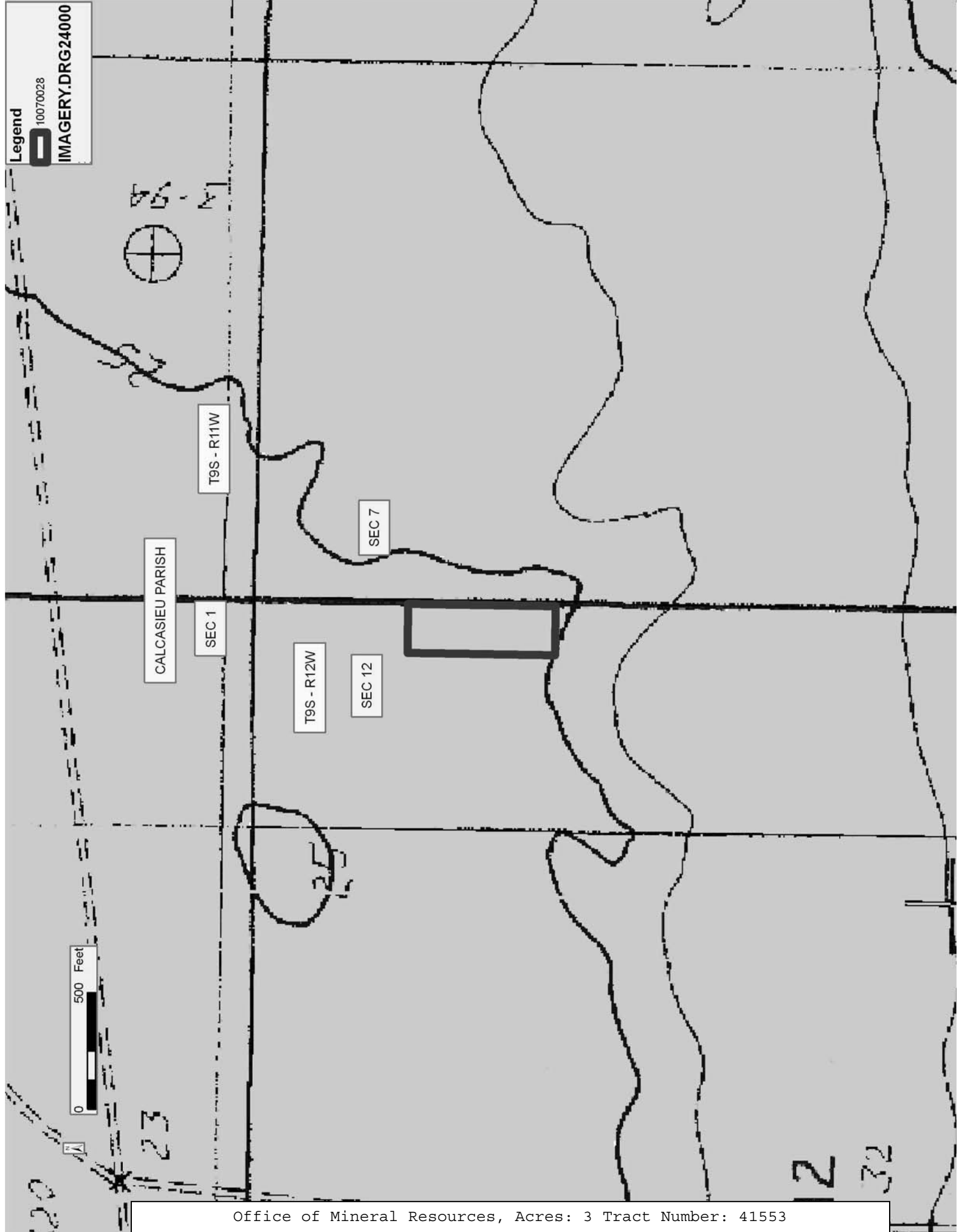
NOTE: The above description of the Tract nominated for lease has been provided and corrected, where required, exclusively by the nomination party. Any mineral lease selected from this Tract and awarded by the Louisiana State Mineral Board shall be without warranty of any kind, either express, implied, or statutory, including, but not limited to, the implied warranties of merchantability and fitness for a particular purpose. Should the mineral lease awarded by the Louisiana State Mineral Board be subsequently modified, cancelled or abrogated due to the existence of conflicting leases, operating agreements, private claims or other future obligations or conditions which may affect all or any portion of the leased Tract, it shall not relieve the Lessee of the obligation to pay any bonus due thereon to the Louisiana State Mineral Board, nor shall the Louisiana State Mineral Board be obligated to refund any consideration paid by the Lessor prior to such modification, cancellation, or abrogation, including, but not limited to, bonuses, rentals and royalties.

NOTE: There shall be no surface operations conducted on the property.

Bidder	Cash Payment	Price/ Acre	Rental	Oil	Gas	Other

Applicant: CHARLESTON ENERGY, INC.





**TRACT 41554 - Calcasieu Parish, Louisiana**

All of the mineral rights only under land adjudicated to and acquired by the State of Louisiana in and through a proper tax sale, and subsequently alienated by the State which retained the mineral rights thereto, and which is not under valid mineral lease from the State of Louisiana on July 14, 2010, situated in Calcasieu Parish, Louisiana, and being more fully described as follows: **Parcel 1:** Situated in the Southwest part of the Northeast Quarter of the Northwest Quarter (NE/4 of the NW/4) of Section 12, Township 9 South, Range 12 West, Calcasieu Parish, Louisiana; being the same land adjudicated to the State of Louisiana for unpaid taxes for the year 1931 in the name of H.B. Read, containing approximately 2 acres;

**Parcel 2:** Situated in the Southwest part of the Northeast Quarter of the Northwest Quarter (NE/4 of the NW/4) of Section 12, Township 9 South, Range 12 West, Calcasieu Parish, Louisiana, being more particularly described as follows: Lying East and adjoining the East line of a certain 2 acre tract in the Southwest corner of the Northeast Quarter of the Northwest Quarter (NE/4 of the NW/4) of said Section 12; running North and South 420 feet, etc. South line extending East along South line of Northeast Quarter of Northwest Quarter (NE/4 of the NW/4) of said Section 12 a sufficient distance to contain 1 acre between parallel lines; being the same land adjudicated to the State of Louisiana for unpaid taxes for the year 1925 in the name of Dempsey Perkins, containing approximately 1 acre;

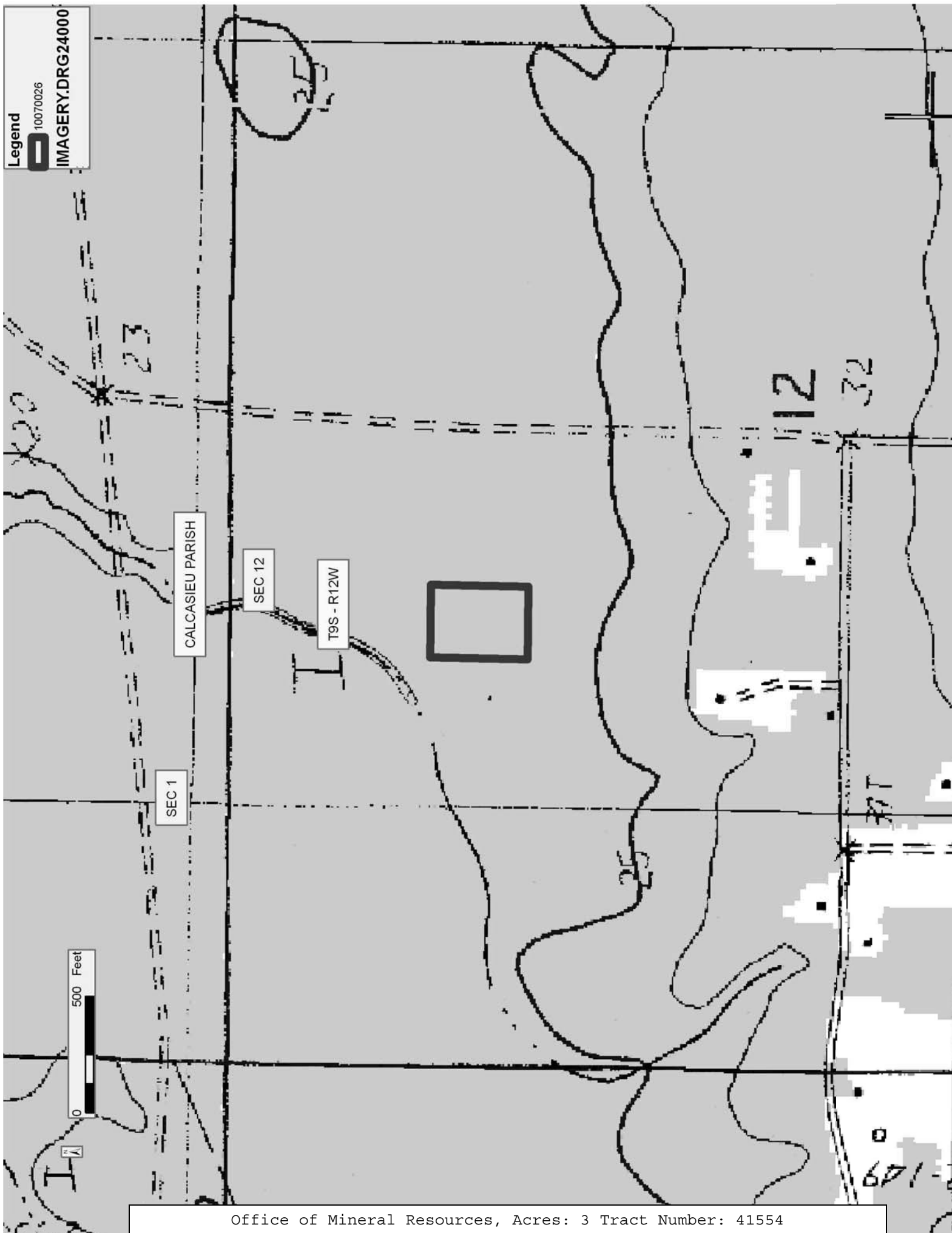
Parcel 1 & Parcel 2 containing in aggregate approximately **3 acres**, all as more particularly outlined on a plat on file in the Office of Mineral Resources, Department of Natural Resources. All bearings, distances and coordinates are based on Louisiana Coordinate System of 1927, (North or South Zone), where applicable.

NOTE: The above description of the Tract nominated for lease has been provided and corrected, where required, exclusively by the nomination party. Any mineral lease selected from this Tract and awarded by the Louisiana State Mineral Board shall be without warranty of any kind, either express, implied, or statutory, including, but not limited to, the implied warranties of merchantability and fitness for a particular purpose. Should the mineral lease awarded by the Louisiana State Mineral Board be subsequently modified, cancelled or abrogated due to the existence of conflicting leases, operating agreements, private claims or other future obligations or conditions which may affect all or any portion of the leased Tract, it shall not relieve the Lessee of the obligation to pay any bonus due thereon to the Louisiana State Mineral Board, nor shall the Louisiana State Mineral Board be obligated to refund any consideration paid by the Lessor prior to such modification, cancellation, or abrogation, including, but not limited to, bonuses, rentals and royalties.

NOTE: There shall be no surface operations conducted on the subject property.

Applicant: CHARLESTON ENERGY, INC.

Bidder	Cash Payment	Price/ Acre	Rental	Oil	Gas	Other



**TRACT 41555 - Calcasieu Parish, Louisiana**

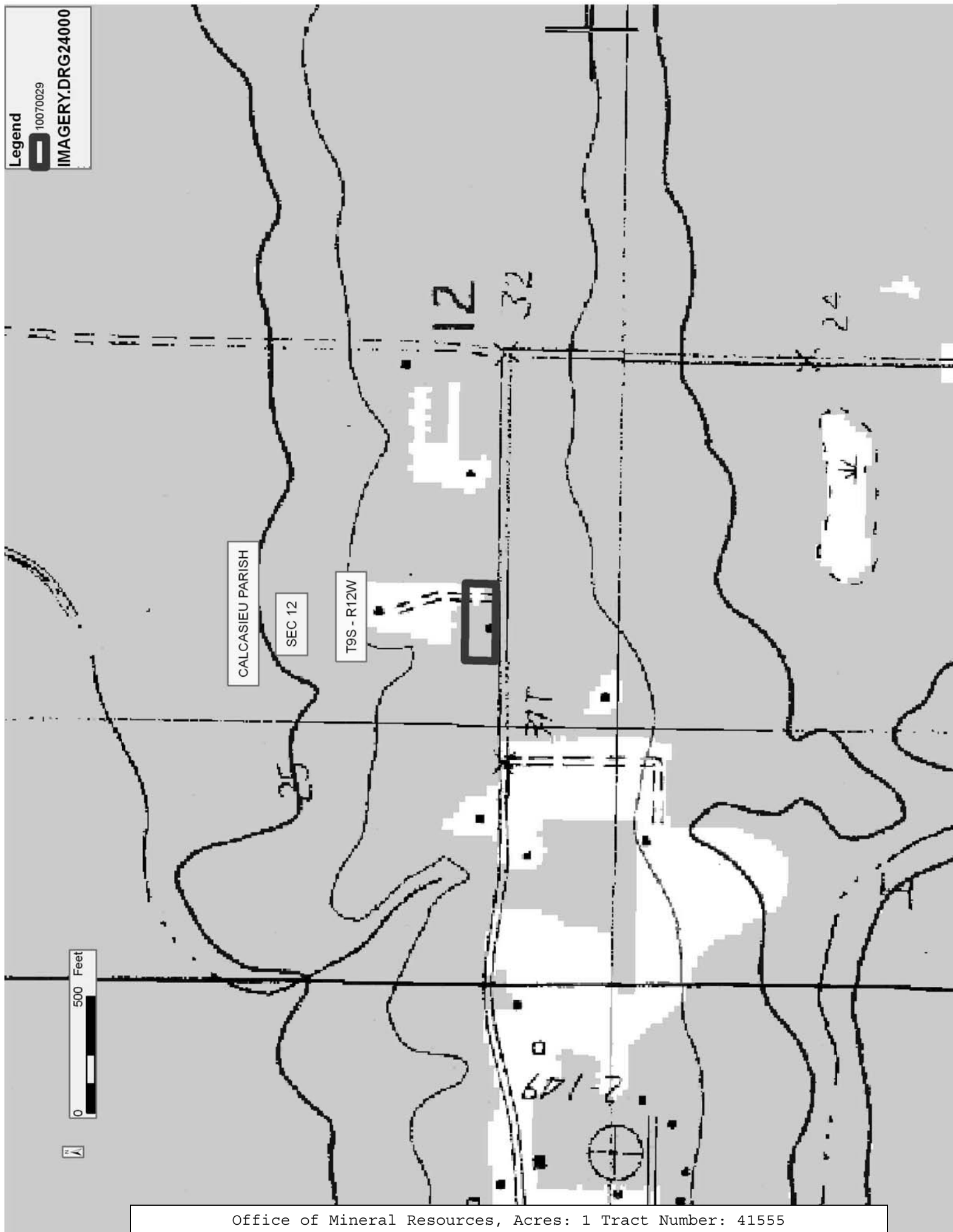
All of the mineral rights only under land adjudicated to and acquired by the State of Louisiana in and through a proper tax sale, and subsequently alienated by the State which retained the mineral rights thereto, and which is not under valid mineral lease from the State of Louisiana on July 14, 2010, situated in Calcasieu Parish, Louisiana, and being more fully described as follows: Commencing 330 feet from the Southwest corner of the Southeast Quarter of the Northwest Quarter (SE/4 of the NW/4) of Section 12, Township 9 South, Range 12 West, Calcasieu Parish, Louisiana; thence run East 330 feet; thence North 132 feet; thence West 330 feet; thence South 132 feet to the point of beginning; being the same land adjudicated to the State of Louisiana for unpaid taxes for the year 1934 in the name of A.J. Coward; containing approximately **1 acre**, all as more particularly outlined on a plat on file in the Office of Mineral Resources, Department of Natural Resources. All bearings, distances and coordinates are based on Louisiana Coordinate System of 1927, (North or South Zone), where applicable.

NOTE: The above description of the Tract nominated for lease has been provided and corrected, where required, exclusively by the nomination party. Any mineral lease selected from this Tract and awarded by the Louisiana State Mineral Board shall be without warranty of any kind, either express, implied, or statutory, including, but not limited to, the implied warranties of merchantability and fitness for a particular purpose. Should the mineral lease awarded by the Louisiana State Mineral Board be subsequently modified, cancelled or abrogated due to the existence of conflicting leases, operating agreements, private claims or other future obligations or conditions which may affect all or any portion of the leased Tract, it shall not relieve the Lessee of the obligation to pay any bonus due thereon to the Louisiana State Mineral Board, nor shall the Louisiana State Mineral Board be obligated to refund any consideration paid by the Lessor prior to such modification, cancellation, or abrogation, including, but not limited to, bonuses, rentals and royalties.

NOTE: There shall be no surface operations conducted on the property.

Applicant: CHARLESTON ENERGY, INC.

Bidder	Cash Payment	Price/ Acre	Rental	Oil	Gas	Other



**TRACT 41556 - St. Mary Parish, Louisiana**

All of the mineral rights only under land adjudicated to and acquired by the State of Louisiana in and through a proper tax sale, and subsequently alienated by the State which retained the mineral rights thereto, and which is not under valid mineral lease from the State of Louisiana on July 14, 2010, situated in St. Mary Parish, Louisiana, and being more fully described as follows: That certain tract or parcel of land, lying and being situated in the Cypremort section of St. Mary Parish, La., containing Four and 28/100 (4.28) acres of land, bounded by Property of Lewis; Adeline; Adeline and Adeline, being the same land adjudicated to the State of Louisiana for unpaid taxes for the year 1931, in the name of Estate of Luke Malone. Subsequently, the State of Louisiana granted Patent No. 13757, dated January 29, 1945 to W. Prescott Foster, containing approximately **4.28 acres**, all as more particularly outlined on a plat on file in the Office of Mineral Resources, Department of Natural Resources. All bearings, distances and coordinates are based on Louisiana Coordinate System of 1927, (North or South Zone), where applicable.

NOTE: The above description of the Tract nominated for lease has been provided and corrected, where required, exclusively by the nomination party. Any mineral lease selected from this Tract and awarded by the Louisiana State Mineral Board shall be without warranty of any kind, either express, implied, or statutory, including, but not limited to, the implied warranties of merchantability and fitness for a particular purpose. Should the mineral lease awarded by the Louisiana State Mineral Board be subsequently modified, cancelled or abrogated due to the existence of conflicting leases, operating agreements, private claims or other future obligations or conditions which may affect all or any portion of the leased Tract, it shall not relieve the Lessee of the obligation to pay any bonus due thereon to the Louisiana State Mineral Board, nor shall the Louisiana State Mineral Board be obligated to refund any consideration paid by the Lessor prior to such modification, cancellation, or abrogation, including, but not limited to, bonuses, rentals and royalties.

NOTE: There shall be no surface operations conducted on the subject property.

NOTE: The State of Louisiana does hereby reserve, and this lease shall be subject to, the imprescriptible right of surface use in the nature of a servitude in favor of the Department of Natural Resources, including its Offices and Commissions, for the sole purpose of implementing, constructing, servicing and maintaining approved coastal zone management and/or restoration projects. Utilization of any and all rights derived under this lease by the mineral lessee, its agents, successors or assigns, shall not interfere with nor hinder the reasonable surface use by the Department of Natural Resources, its Offices or Commissions, as herein above reserved.

Applicant: TRINITY ENERGY SERVICES, LLC

Bidder	Cash Payment	Price/ Acre	Rental	Oil	Gas	Other



