

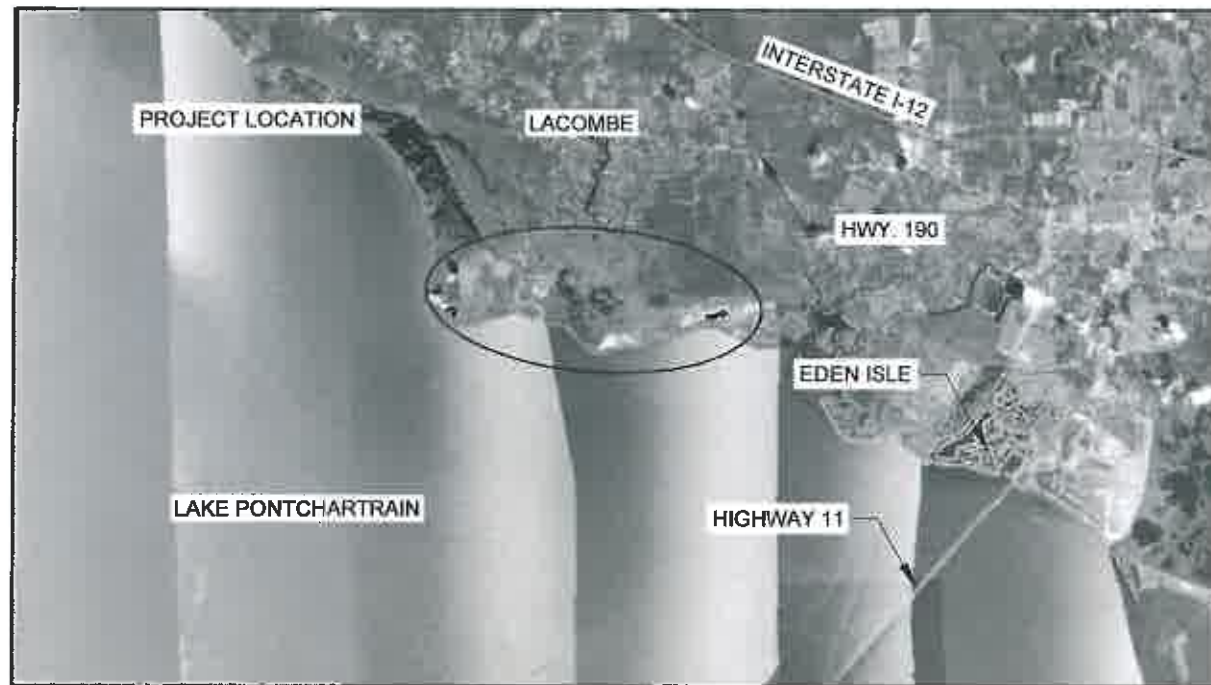
STATE OF LOUISIANA
COASTAL PROTECTION AND RESTORATION AUTHORITY

GOOSE POINT/POINT PLATTE
VEGETATIVE PLANTINGS PROJECT
PO-33-1
ST. TAMMANY PARISH



INDEX TO SHEETS

| SHEET NO. | DESCRIPTION |
|-----------|-----------------------------|
| 1 | TITLE SHEET |
| 2 | GENERAL NOTES |
| 3 | PROJECT LAYOUT |
| 4 | GOOSE POINT LAYOUT |
| 5 | POINT PLATTE LAYOUT |
| 6 | TYPICAL SECTION AND DETAILS |



Michael A. Chilton
CHIEF, ENGINEERING DIVISION

James Carroll
ENGINEER MANAGER

Shannon Haynes
ENGINEER SUPERVISOR

Shane Faust
PROJECT DESIGNER



LICENSURE CLASSIFICATION REQUIREMENTS

MAJOR CATEGORY: HEAVY CONSTRUCTION

SUBCLASSIFICATION: LANDSCAPING, GRADING & BEAUTIFICATION

AND/OR

MAJOR CATEGORY: SPECIALITY

SUBCLASSIFICATION: COASTAL RESTORATION & HABITAT ENHANCEMENT AND/OR SEEDING, SODDING, LOAD & SOIL STABILIZATION, EROSION CONTROL, SHEET PILING

| | | | | | | | | | |
|------|------|-------------|----|--|--|---|--|-----------------------------------|--|
| | | | | COASTAL PROTECTION AND RESTORATION AUTHORITY 450 LAUREL STREET BATON ROUGE, LOUISIANA 70801 | | GOOSE POINT/POINT PLATTE VEGETATIVE PLANTING PROJECT | | TITLE SHEET | |
| | | | | | | STATE PROJECT NUMBER: PO-33-1 | | | |
| | | | | | | FEDERAL PROJECT NUMBER: PO-33-1 | | DATE: AUGUST 2013 | |
| | | | | DRAWN BY: SHANE FAUST | | DESIGNED BY: SHANE FAUST | | APPROVED BY: SHANNON HAYNES, P.E. | |
| REV. | DATE | DESCRIPTION | BY | | | | | SHEET 1 OF 6 | |

GENERAL NOTES

1. PLANS AND SPECIFICATIONS ARE COMPLEMENTARY; WHAT IS REQUIRED BY ONE IS BINDING AS IF REQUIRED BY ALL. CLARIFICATIONS AND INTERPRETATIONS OF, OR NOTIFICATIONS OF MINOR VARIATIONS AND DEVIATIONS IN THE CONTRACT DOCUMENTS, WILL BE ISSUED BY THE ENGINEER, IF NECESSARY.
2. EXACT LOCATION OF ALL PLANTS SHALL BE DETERMINED ON SITE BY THE ENGINEER DURING PRE-CONSTRUCTION LAYOUT.
3. ALL DISTANCE MEASUREMENTS SHOWN ON THE PLANS ARE APPROXIMATE.
4. NO EQUIPMENT MAY ALTER THE EXISTING CONDITIONS OR DISTURB EXISTING VEGETATION.
5. ANY DAMAGE TO EXISTING U.S. COAST GUARD NAVIGATION AIDS OR PRIVATE NAVIGATION AIDS SHALL BE REPAIRED BY THE CONTRACTOR TO U.S. COAST GUARD STANDARDS AT THE EXPENSE OF THE CONTRACTOR.
11. MEAN HIGH WATER (MHW) AND MEAN LOW WATER (MLW) WERE CALCULATED FROM THE USCOE GAGE PO06-06 IN SALT BAYOU. DATA FROM 10-18-2000 TO 12-31-2003 WAS USED. ELEVATIONS ARE REFERENCED TO NAVD 88, US FEET.
12. ALL EQUIPMENT SHALL BE FLOATING AT ALL TIMES DURING TRANSIT TO AND FROM THE PROJECT SITE.

SUMMARY OF ESTIMATED QUANTITIES

| ITEM NO. | DESCRIPTION | UNIT | ESTIMATED QUANTITY |
|----------|----------------------------------|------|--------------------|
| 1 | SMOOTH CORDGRASS TRADE GALLON | EACH | 45,975 |

THE TOTAL SQUARE FEET OF EACH PLANTING AREA WAS ESTIMATED USING AERIAL PHOTOGRAPHY AND AUTOCAD. THE OWNER RESERVES THE RIGHT TO ADJUST QUANTITIES HIGHER OR LOWER WITHOUT ADJUSTMENT OF THE UNIT PRICE.

| | | | | | | | |
|------|------|-------------|----|-----------------------|--|--|------------------------------------|
| | | | | | COASTAL PROTECTION AND RESTORATION AUTHORITY <small>450 LAUREL STREET BATON ROUGE, LOUISIANA 70801</small> | GOOSE POINT/POINT PLATTE VEGETATIVE PLANTINGS PROJECT STATE PROJECT NUMBER: PO-33-1 FEDERAL PROJECT NUMBER: PO-33-1 | GENERAL NOTES DATE: AUGUST 2013 |
| REV. | DATE | DESCRIPTION | BY | DRAWN BY: SHANE FAUST | DESIGNED BY: SHANE FAUST | APPROVED BY: SHANNON HAYNES, P.E. | SHEET 2 OF 6 |



- NOTES:**
1. BACKGROUND IMAGERY WAS TAKEN OCTOBER 2010.
 2. EXACT LOCATION OF PLANTS SHALL BE DETERMINED ON SITE BY THE ENGINEER DURING PRE-CONSTRUCTION LAYOUT.
 3. NO EQUIPMENT MAY ALTER THE EXISTING CONDITIONS OF THE MARSH OR DISTURB EXISTING VEGETATION.

| REV. | DATE | DESCRIPTION | BY |
|------|------|-------------|----|
| | | | |
| | | | |
| | | | |

COASTAL PROTECTION AND RESTORATION AUTHORITY
 450 LAUREL STREET
 BATON ROUGE, LOUISIANA 70801

DRAWN BY: SHANE FAUST DESIGNED BY: SHANE FAUST

GOOSE POINT/POINT PLATTE VEGETATIVE PLANTINGS PROJECT

STATE PROJECT NUMBER: PO-33-1
 FEDERAL PROJECT NUMBER: PO-33-1

APPROVED BY: SHANNON HAYNES, P.E.

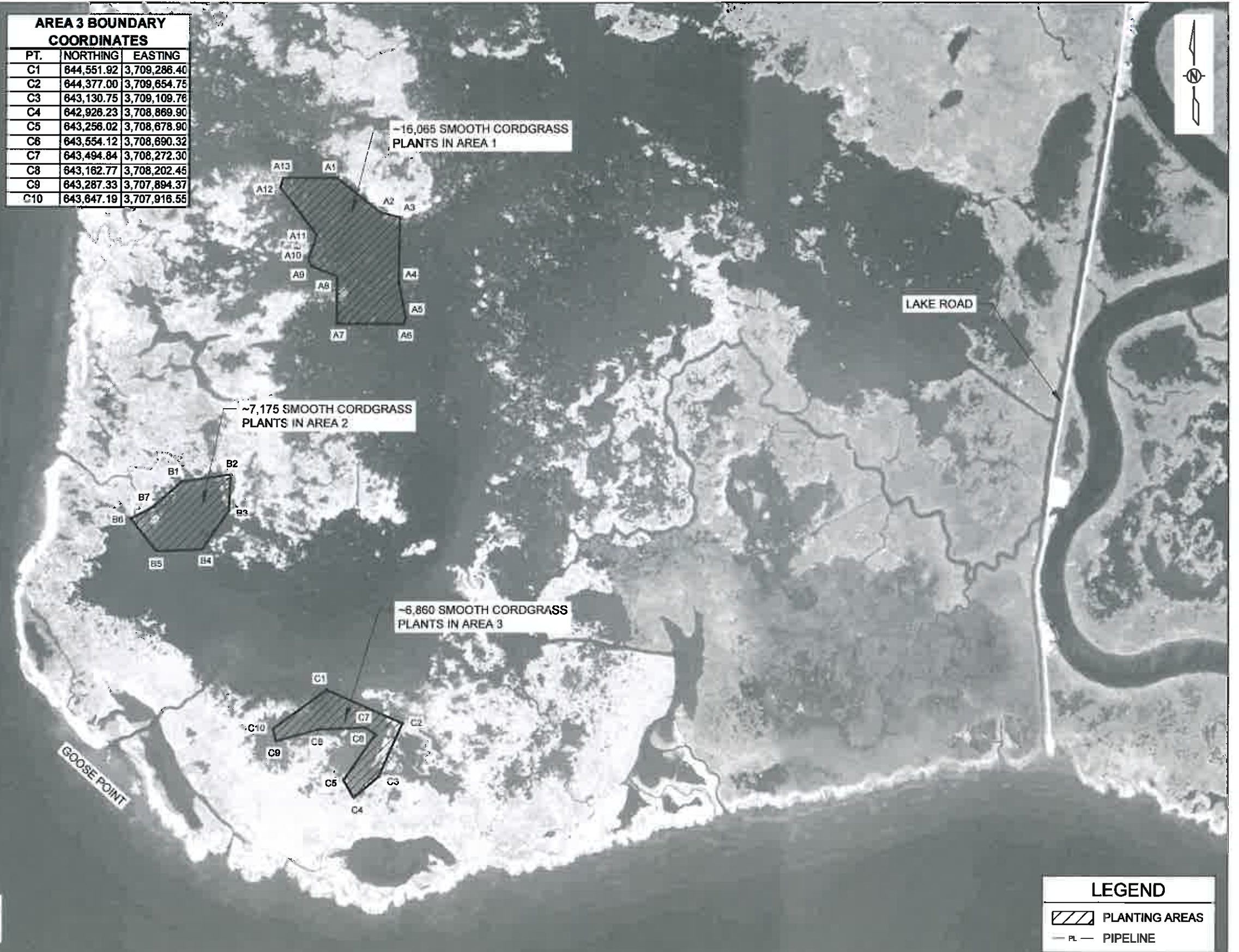
PROJECT LAYOUT

DATE: AUGUST 2013
 SHEET 3 OF 6

| AREA 1 BOUNDARY COORDINATES | | |
|-----------------------------|------------|--------------|
| PT. | NORTHING | EASTING |
| A1 | 648,847.45 | 3,708,688.96 |
| A2 | 648,518.51 | 3,709,104.61 |
| A3 | 648,470.63 | 3,709,287.67 |
| A4 | 647,849.27 | 3,709,278.51 |
| A5 | 647,507.50 | 3,709,346.74 |
| A6 | 647,454.84 | 3,709,325.02 |
| A7 | 647,454.84 | 3,708,686.96 |
| A8 | 647,907.78 | 3,708,686.96 |
| A9 | 648,000.99 | 3,708,777.08 |
| A10 | 648,074.04 | 3,708,417.95 |
| A11 | 648,304.19 | 3,708,493.94 |
| A12 | 648,756.20 | 3,708,148.13 |
| A13 | 648,847.45 | 3,708,171.85 |

| AREA 2 BOUNDARY COORDINATES | | |
|-----------------------------|------------|--------------|
| PT. | NORTHING | EASTING |
| B1 | 645,944.22 | 3,707,214.08 |
| B2 | 646,014.20 | 3,707,683.17 |
| B3 | 645,666.96 | 3,707,665.79 |
| B4 | 645,295.35 | 3,707,411.40 |
| B5 | 645,278.82 | 3,708,977.61 |
| B6 | 645,591.95 | 3,706,732.41 |
| B7 | 645,702.80 | 3,708,944.65 |

| AREA 3 BOUNDARY COORDINATES | | |
|-----------------------------|------------|--------------|
| PT. | NORTHING | EASTING |
| C1 | 644,551.92 | 3,709,286.40 |
| C2 | 644,377.00 | 3,709,654.75 |
| C3 | 643,130.75 | 3,709,109.76 |
| C4 | 642,926.23 | 3,708,869.90 |
| C5 | 643,256.02 | 3,708,678.90 |
| C6 | 643,554.12 | 3,708,690.32 |
| C7 | 643,494.84 | 3,708,272.30 |
| C8 | 643,162.77 | 3,708,202.46 |
| C9 | 643,287.33 | 3,707,894.37 |
| C10 | 643,647.19 | 3,707,916.55 |



NOTES:
 1. BACKGROUND IMAGERY WAS TAKEN OCTOBER 2010.
 2. EXACT LOCATION OF PLANTS SHALL BE DETERMINED ON SITE BY THE ENGINEER DURING PRE-CONSTRUCTION LAYOUT.
 3. NO EQUIPMENT MAY ALTER THE EXISTING CONDITIONS OF THE MARSH OR DISTURB EXISTING VEGETATION.

| REV. | DATE | DESCRIPTION | BY |
|------|------|-------------|----|
| | | | |
| | | | |
| | | | |
| | | | |

COASTAL PROTECTION AND RESTORATION AUTHORITY
 450 LAUREL STREET
 BATON ROUGE, LOUISIANA 70801

DRAWN BY: SHANE FAUST DESIGNED BY: SHANE FAUST

GOOSE POINT/POINT PLATTE VEGETATIVE PLANTINGS PROJECT

STATE PROJECT NUMBER: PO-33-1
 FEDERAL PROJECT NUMBER: PO-33-1

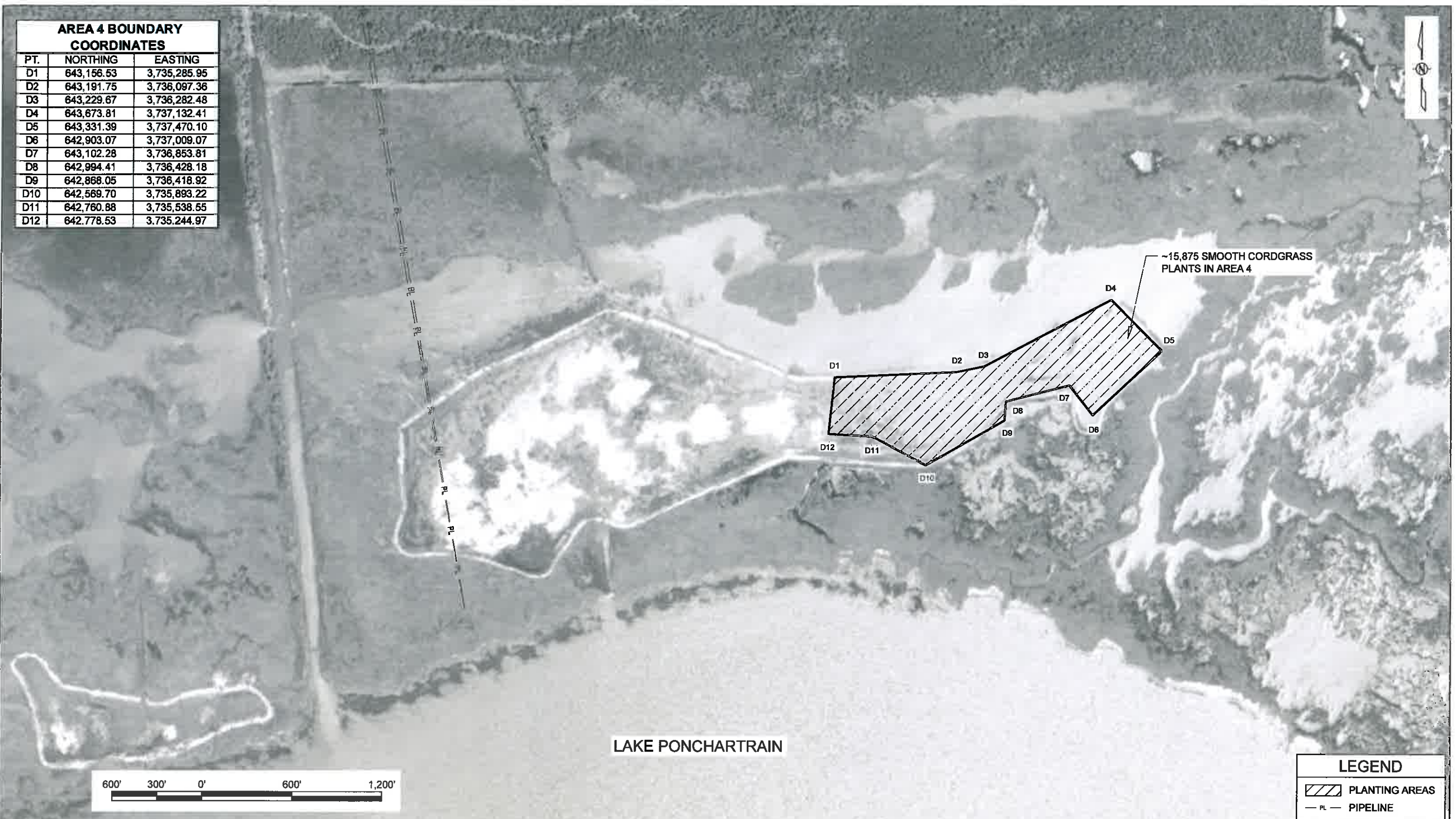
APPROVED BY: SHANNON HAYNES, P.E.

GOOSE POINT LAYOUT

DATE: AUGUST 2013
 SHEET 4 OF 6

**AREA 4 BOUNDARY
COORDINATES**

| PT. | NORTHING | EASTING |
|-----|------------|--------------|
| D1 | 643,156.53 | 3,735,285.95 |
| D2 | 643,191.75 | 3,736,097.36 |
| D3 | 643,229.67 | 3,736,282.48 |
| D4 | 643,673.81 | 3,737,132.41 |
| D5 | 643,331.39 | 3,737,470.10 |
| D6 | 642,903.07 | 3,737,009.07 |
| D7 | 643,102.28 | 3,736,853.81 |
| D8 | 642,994.41 | 3,736,428.18 |
| D9 | 642,868.05 | 3,736,418.92 |
| D10 | 642,569.70 | 3,735,893.22 |
| D11 | 642,760.88 | 3,735,538.55 |
| D12 | 642,778.53 | 3,735,244.97 |



~15,875 SMOOTH CORDGRASS
PLANTS IN AREA 4

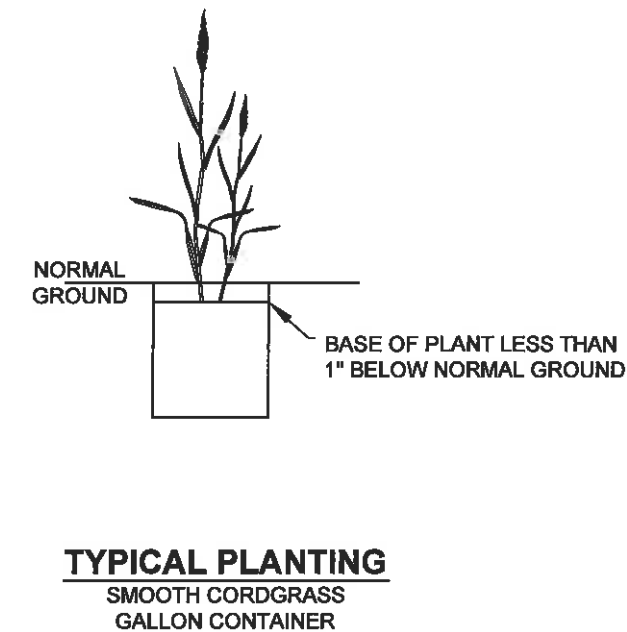
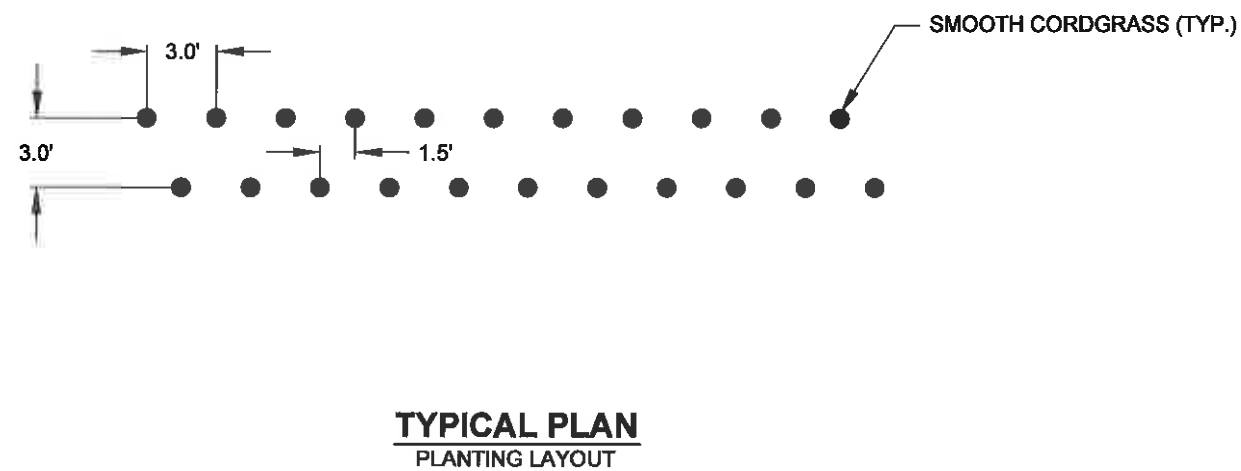
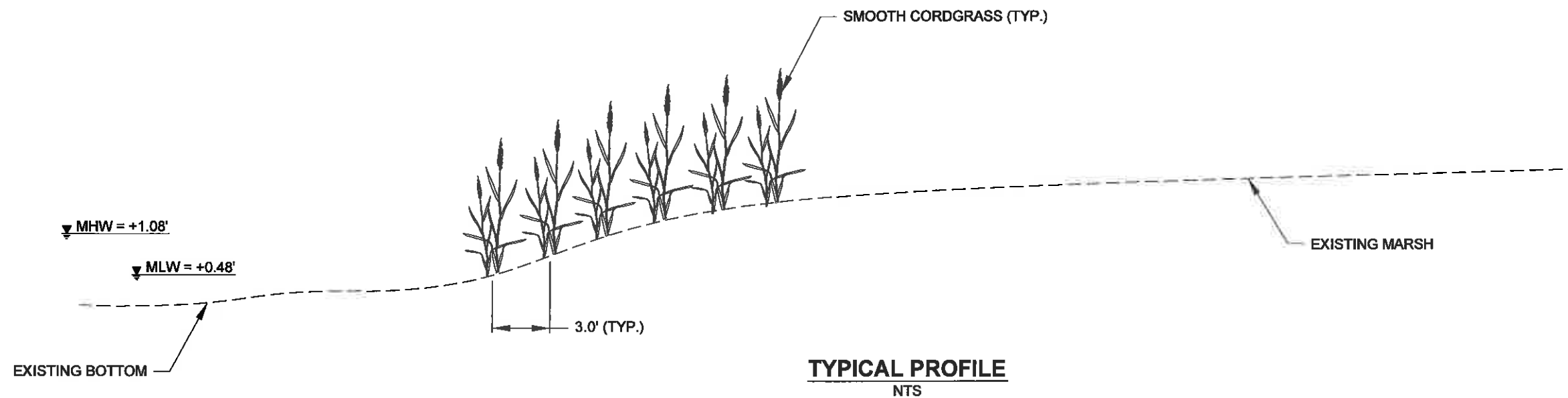
LAKE PONCHARTRAIN



| LEGEND | |
|--------|----------------|
| | PLANTING AREAS |
| | PIPELINE |

- NOTES:**
- BACKGROUND IMAGERY WAS TAKEN OCTOBER 2010.
 - EXACT LOCATION OF PLANTS SHALL BE DETERMINED ON SITE BY THE ENGINEER DURING PRE-CONSTRUCTION LAYOUT.
 - NO EQUIPMENT MAY ALTER THE EXISTING CONDITIONS OF THE MARSH OR DISTURB EXISTING VEGETATION.

| | | | | | | | | | |
|------|------|-------------|----|--|--------------------------|--|--------------|---|--|
| | | | | COASTAL PROTECTION AND RESTORATION AUTHORITY 450 LAUREL STREET BATON ROUGE, LOUISIANA 70801 | | GOOSE POINT/POINT PLATTE VEGETATIVE PLANTINGS PROJECT STATE PROJECT NUMBER: PO-33-1 FEDERAL PROJECT NUMBER: PO-33-1 | | POINT PLATTE LAYOUT DATE: AUGUST 2013 | |
| REV. | DATE | DESCRIPTION | BY | DRAWN BY: SHANE FAUST | DESIGNED BY: SHANE FAUST | APPROVED BY: SHANNON HAYNES, P.E. | SHEET 5 OF 6 | | |



| | | | | | | | |
|------|------|-------------|----|--|--|--|---|
| | | | | | OFFICE OF COASTAL PROTECTION & RESTORATION RESTORATION DIVISION 450 LAUREL STREET BATON ROUGE, LOUISIANA 70801 | GOOSE POINT/POINT PLATTE VEGETATIVE PLANTING PROJECT | TYPICAL SECTION AND DETAILS |
| | | | | | | STATE PROJECT NUMBER: PO-33-1 FEDERAL PROJECT NUMBER: PO-33-1 | |
| REV. | DATE | DESCRIPTION | BY | | | DRAWN BY: SHANE FAUST DESIGNED BY: SHANE FAUST | APPROVED BY: SHANNON HAYNES, P.E. |