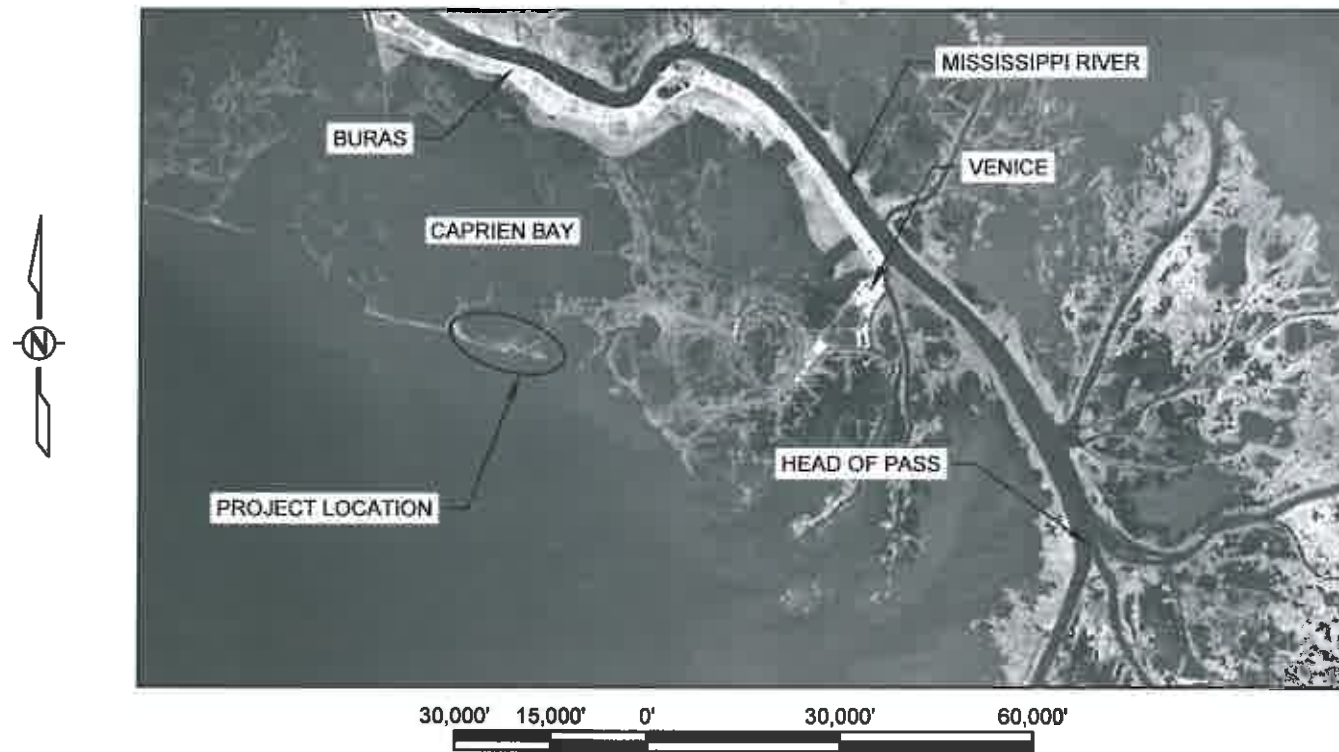


STATE OF LOUISIANA
COASTAL PROTECTION AND RESTORATION AUTHORITY

INDEX TO SHEETS

SHEET NO.	DESCRIPTION
1	TITLE SHEET
2	GENERAL NOTES
3	PROJECT LAYOUT
4	TYPICAL SECTION & DETAILS

SHELL ISLAND EAST BARRIER ISLAND
RESTORATION VEGETATIVE PLANTINGS PROJECT
BA-110
PLAQUEMINES PARISH, LOUISIANA



[Signature]
CHIEF, ENGINEERING DIVISION

[Signature]
ENGINEER MANAGER

[Signature]
ENGINEER SUPERVISOR

[Signature]
PROJECT DESIGNER

LICENSURE CLASSIFICATION REQUIREMENTS

MAJOR CATEGORY: HEAVY CONSTRUCTION

SUBCLASSIFICATION: LANDSCAPING, GRADING & BEAUTIFICATION

OR

MAJOR CATEGORY: SPECIALITY

SUBCLASSIFICATION: COASTAL RESTORATION & HABITAT ENHANCEMENT OR SEEDING, SODDING, LOAD & SOIL STABILIZATION, EROSION CONTROL, SHEET PILING



				COASTAL PROTECTION AND RESTORATION AUTHORITY 450 LAUREL STREET BATON ROUGE, LOUISIANA 70801		SHELL ISLAND EAST BARRIER ISLAND RESTORATION VEGETATIVE PLANTINGS PROJECT		TITLE SHEET	
						STATE PROJECT NUMBER: BA-110			
						FEDERAL PROJECT NUMBER: N/A		DATE: OCTOBER 2013	
				DRAWN BY: SHANE FAUST		DESIGNED BY: SHANE FAUST		APPROVED BY: SHANNON HAYNES, P.E.	
REV.	DATE	DESCRIPTION	BY					SHEET 1 OF 4	

GENERAL NOTES

1. PLANS AND SPECIFICATIONS ARE COMPLEMENTARY; WHAT IS REQUIRED BY ONE IS BINDING AS IF REQUIRED BY ALL. CLARIFICATIONS AND INTERPRETATIONS OF, OR NOTIFICATIONS OF MINOR VARIATIONS AND DEVIATIONS IN THE CONTRACT DOCUMENTS, WILL BE ISSUED BY THE ENGINEER, IF NECESSARY.
2. EXACT LOCATION OF ALL PLANTS SHALL BE DETERMINED ON SITE BY THE ENGINEER DURING PRE-CONSTRUCTION LAYOUT.
3. ALL DISTANCE MEASUREMENTS SHOWN ON THE PLANS ARE APPROXIMATE.
4. NO EQUIPMENT MAY ALTER THE EXISTING CONDITIONS OF THE NEWLY CREATED MARSH OR DUNE PLATFORMS OR DISTURB EXISTING VEGETATION.
5. ANY DAMAGE TO EXISTING U.S. COAST GUARD NAVIGATION AIDS OR PRIVATE NAVIGATION AIDS SHALL BE REPAIRED BY THE CONTRACTOR TO U.S. COAST GUARD STANDARDS AT THE EXPENSE OF THE CONTRACTOR.
6. MEAN HIGH WATER (MHW) AND MEAN LOW WATER (MLW) ARE BASED ON THE TIDE STATION 8761724 AT GRAND ISLE, EAST POINT. ELEVATIONS ARE REFERENCED TO NAVD 88, US FEET.
7. ALL EQUIPMENT SHALL BE FLOATING AT ALL TIMES DURING TRANSIT TO AND FROM THE PROJECT SITE.

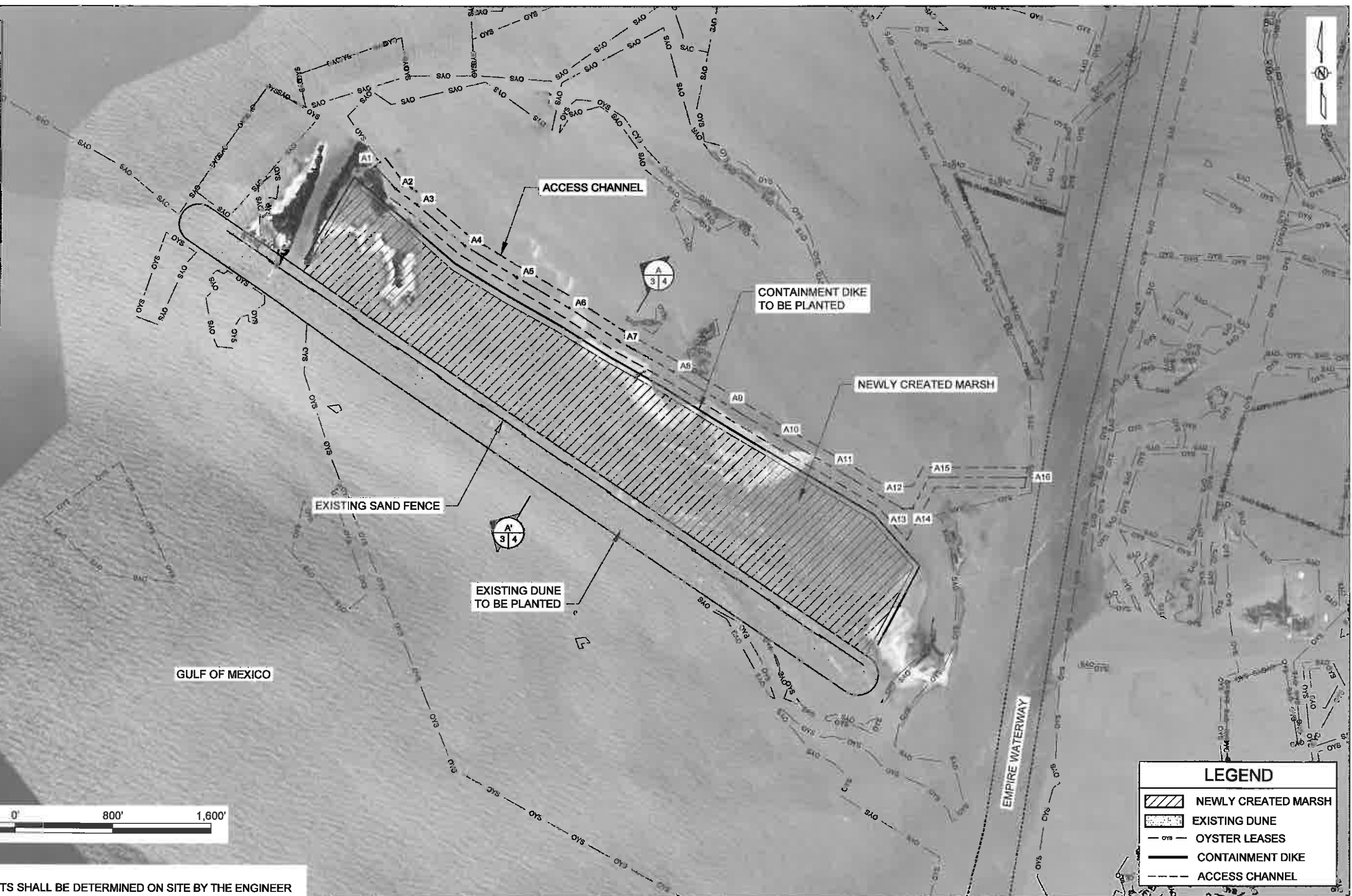
SUMMARY OF ESTIMATED QUANTITIES

ITEM NO.	DESCRIPTION	UNIT	ESTIMATED QUANTITY
1	SMOOTH CORDGRASS VEGETATIVE PLUG	EACH	10,000
2	BLACK MANGROVE FOUR-INCH CONTAINER	EACH	1,000
3	BITTER PANICUM FOUR-INCH CONTAINER	EACH	12,375
4	MARSHHAY GRASS FOUR INCH-CONTAINER	EACH	2,750
5	SEA OATS GALLON CONTAINER	EACH	2,750

QUANTITIES SHOWN ARE FOR BID PURPOSES ONLY AND WERE CALCULATED ACCORDING TO CONDITIONS SURVEYED IN JANUARY 2012. THE OWNER RESERVES THE RIGHT TO ADJUST QUANTITIES HIGHER OR LOWER WITHOUT ADJUSTMENT OF THE UNIT PRICE.

					COASTAL PROTECTION AND RESTORATION AUTHORITY 450 LAUREL STREET BATON ROUGE, LOUISIANA 70801	SHELL ISLAND EAST BARRIER ISLAND RESTORATION VEGETATIVE PLANTINGS PROJECT STATE PROJECT NUMBER: BA-110 FEDERAL PROJECT NUMBER: BA-110	GENERAL NOTES DATE: OCTOBER 2013
REV.	DATE	DESCRIPTION	BY	DRAWN BY: SHANE FAUST	DESIGNED BY: SHANE FAUST	APPROVED BY: SHANNON HAYNES, P.E.	SHEET 2 OF 4

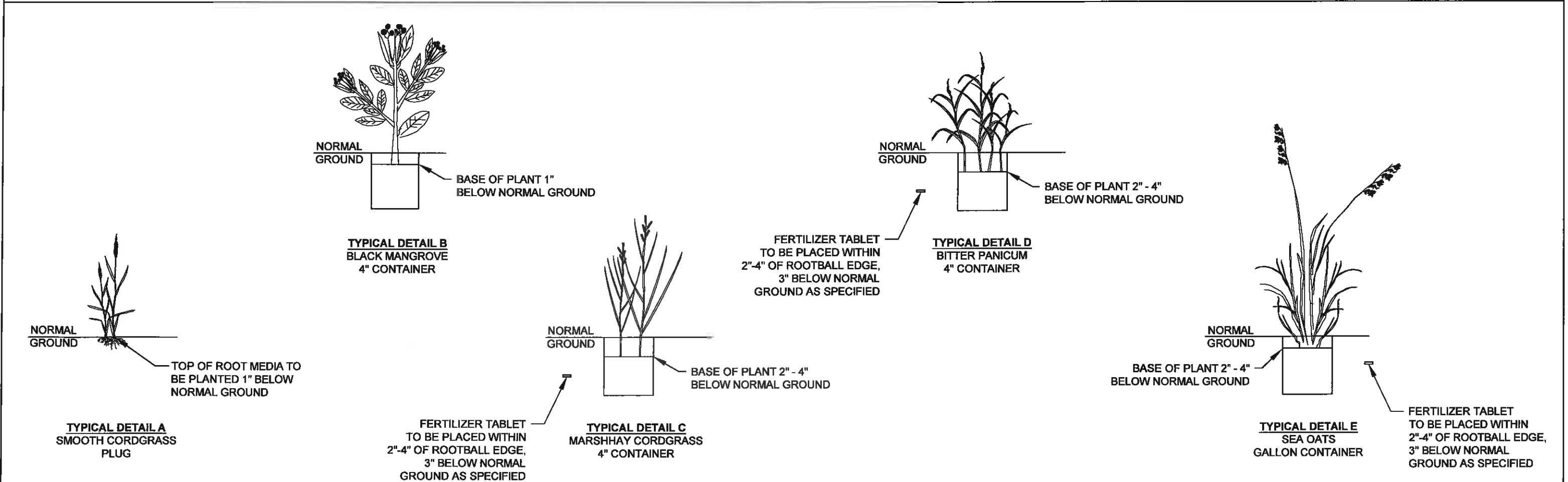
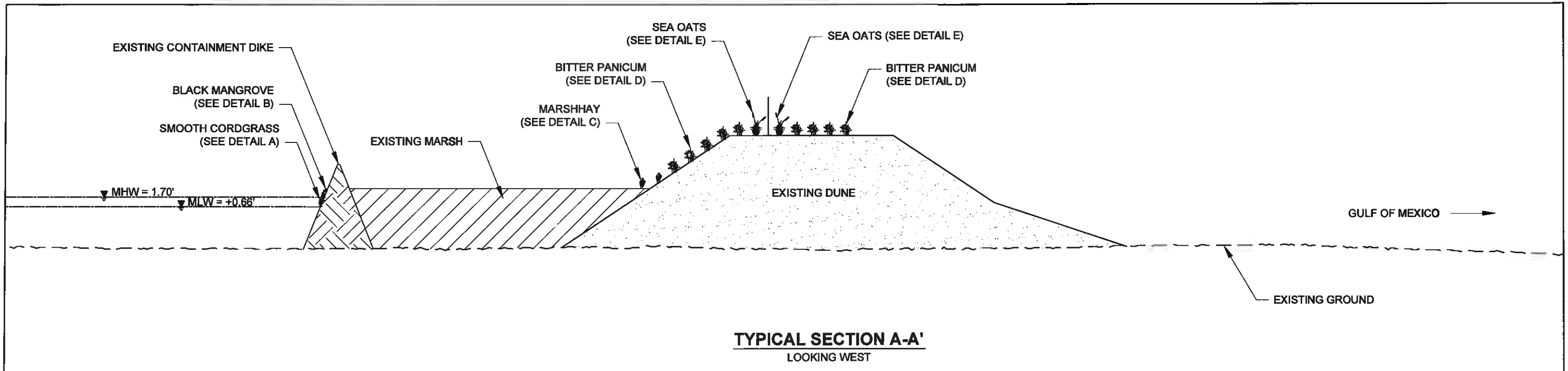
ACCESS CHANNEL CENTERLINE COORDINATES		
POINT	NORTHING	EASTING
A1	286,972.13	3,826,648.23
A2	286,785.40	3,826,815.65
A3	286,652.80	3,826,994.15
A4	286,321.55	3,827,384.40
A5	286,062.50	3,827,812.90
A6	285,811.15	3,828,245.40
A7	285,533.95	3,828,664.30
A8	285,288.20	3,829,100.15
A9	285,023.15	3,829,525.15
A10	284,764.00	3,829,953.90
A11	284,515.35	3,830,387.90
A12	284,258.25	3,830,817.55
A13	284,161.65	3,830,984.08
A14	284,166.75	3,831,059.83
A15	284,421.08	3,831,198.06
A16	284,418.63	3,831,987.51



- NOTES:**
- EXACT LOCATION OF ALL PLANTS SHALL BE DETERMINED ON SITE BY THE ENGINEER DURING PRE-CONSTRUCTION LAYOUT.
 - ALL DISTANCE MEASUREMENTS SHOWN ON THE PLANS ARE APPROXIMATE.
 - NO EQUIPMENT MAY ALTER THE EXISTING CONDITIONS OF THE NEWLY CREATED MARSH OR DUNE PLATFORMS OR DISTURB EXISTING VEGETATION.
 - CONTRACTOR MUST AVOID ALL OYSTER LEASES. ACCESS TO THE NORTH SIDE OF THE ISLAND IS LIMITED TO THE ACCESS CHANNEL AS SHOWN ON THE PLANS.

LEGEND	
	NEWLY CREATED MARSH
	EXISTING DUNE
	OYSTER LEASES
	CONTAINMENT DIKE
	ACCESS CHANNEL

				COASTAL PROTECTION AND RESTORATION AUTHORITY 450 LAUREL STREET BATON ROUGE, LOUISIANA 70801		SHELL ISLAND EAST BARRIER ISLAND RESTORATION VEGETATIVE PLANTINGS PROJECT		PROJECT LAYOUT
						STATE PROJECT NUMBER: BA-110		
REV. DATE DESCRIPTION BY				DRAWN BY: SHANE FAUST DESIGNED BY: SHANE FAUST		APPROVED BY: SHANNON HAYNES, P.E.		DATE: OCTOBER 2013
								SHEET 3 OF 4



- NOTES:**
- ALL PLANTS ON THE DUNE SHALL BE PLANTED ON FIVE (5) FOOT CENTERS WITH ROWS TEN (10) FOOT APART.
 - ALL PLANTS ON THE CONTAINMENT DIKE SHALL BE PLANTED ON THREE (3) FOOT CENTERS WITH ROWS THREE (3) FOOT APART.
 - LOCATIONS OF PLANT ROWS ARE APPROXIMATE. SPECIES LOCATIONS ARE SUBJECT TO CHANGE DUE TO SITE CONDITIONS AND/OR CONSTRUCTION VARIABLES.

				COASTAL PROTECTION AND RESTORATION AUTHORITY		SHELL ISLAND EAST BARRIER ISLAND RESTORATION VEGETATIVE PLANTINGS PROJECT		TYPICAL SECTION AND DETAILS	
				450 LAUREL STREET BATON ROUGE, LOUISIANA 70801		STATE PROJECT NUMBER: BA-110			
						FEDERAL PROJECT NUMBER: N/A		DATE: OCTOBER 2013	
				DRAWN BY: SHANE FAUST		DESIGNED BY: SHANE FAUST		APPROVED BY: SHANNON HAYNES, P.E.	
REV.	DATE	DESCRIPTION	BY					SHEET 4 OF 4	